

**EXHIBIT 9****Section 2.1033 (c)(12) PHOTOGRAPHS OF THE EQUIPMENT**

Photographs (8 x 10) of the equipment of sufficient clarity to reveal equipment construction and layout, including meters, if any, and labels for controls and meters and sufficient views of the internal construction to define component placement and chassis assembly. Insofar as these requirements are met by photographs or drawings contained in instruction manuals supplied with the certification request, additional photographs are necessary only to complete the required showing.

Response

The RF path of the PCS 4x45W RRH is comprised of two critical RF active components: the transceiver CRP1900 and power amplifier RHPA 1900.

The following pages contain the required photographs of the AS5BBTRX-05 RRH, subject of this application, showing the external and internal views of the RRH and its two critical RF components.

Seven photos in total were submitted, which include:

- 1) External Front and Side Views of the RRH,
- 2) External Front-Right Side-Bottom View of the RRH,
- 3) External Front-Left Side-Top View of the RRH,
- 4) Internal Views of the RRH:
  - Top: RF Transmitting and Receiving Filter,
  - Middle: Transceiver CRP1900 and Power Amplifier RHPA 1900,
  - Bottom: PSU Circuit.
- 5) Front and Back Views of RHPA1900
- 6) Front and Rear Views of CRP1900 with Shielding Cover Removed
- 7) Front and Rear Views of RHPA1900 with Shielding Cover Removed

External Front and Side Views of the RRH



External Front-Right Side-Bottom View of the RRH

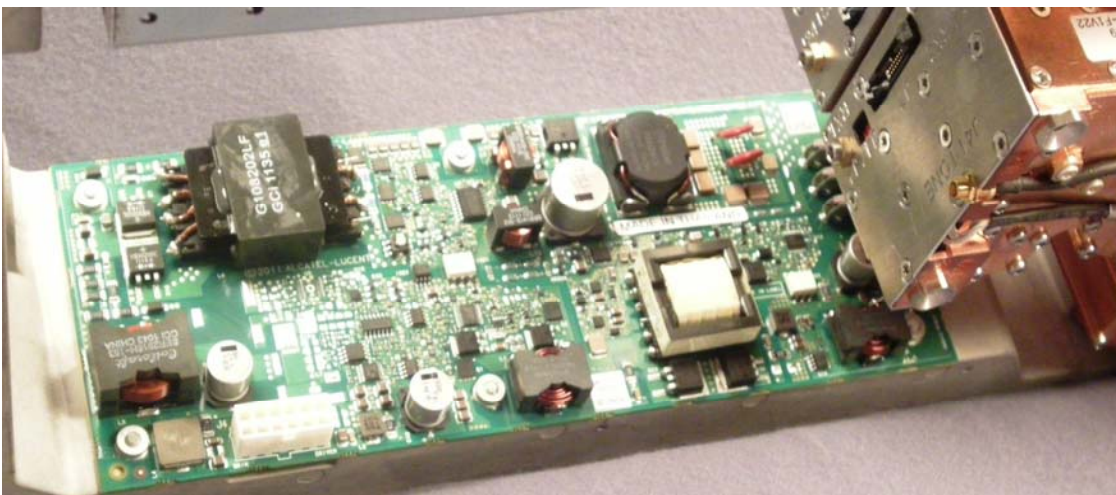
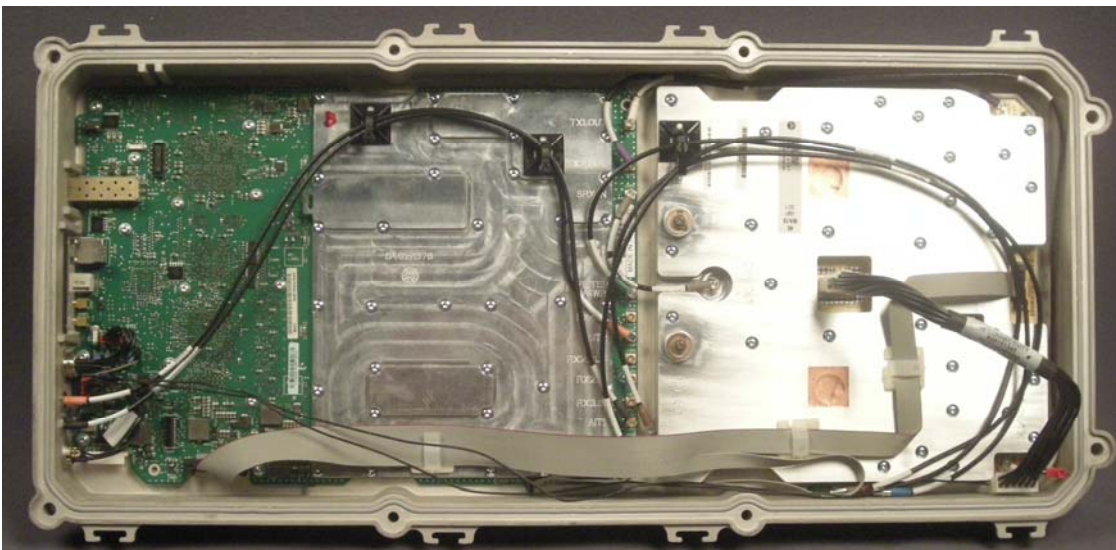
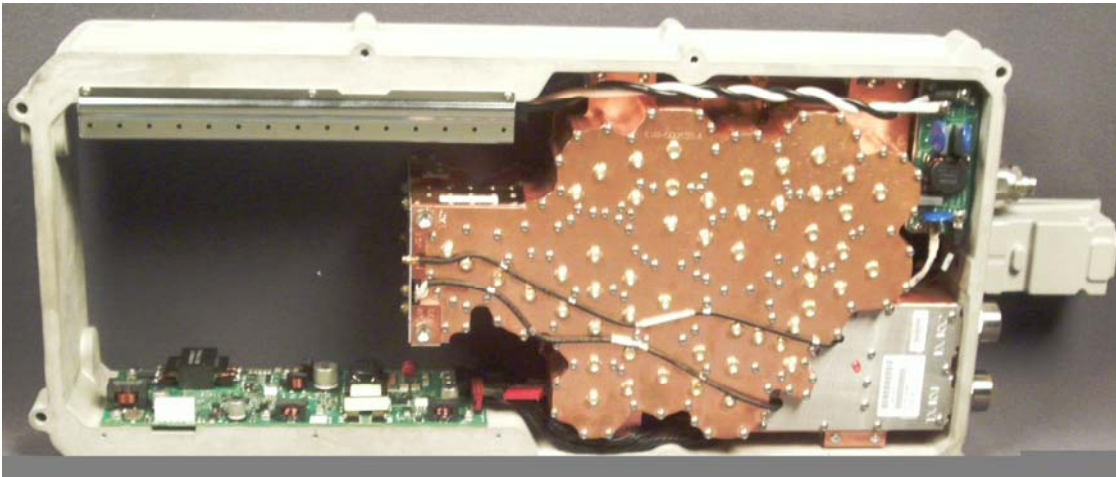


External Front-Left Side-Top View of the RRH

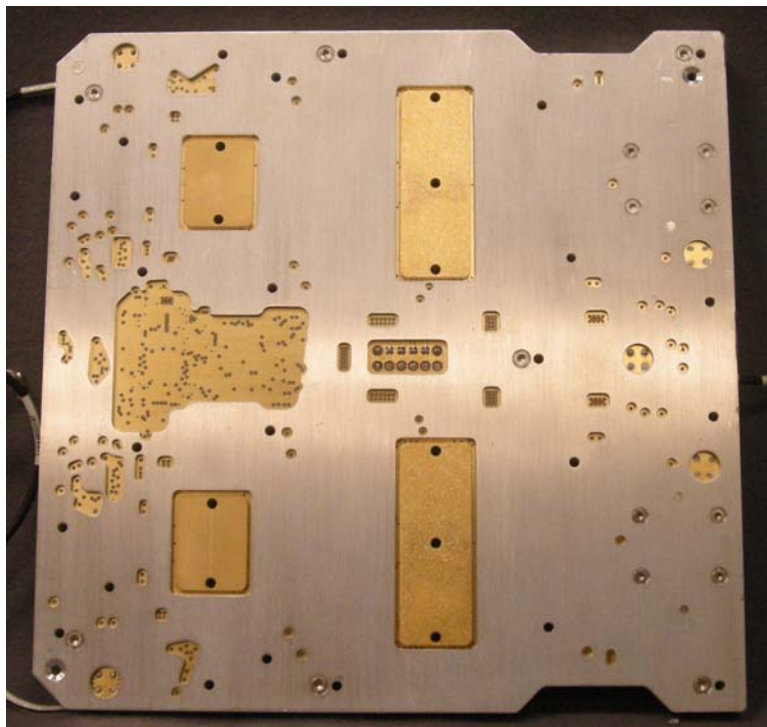
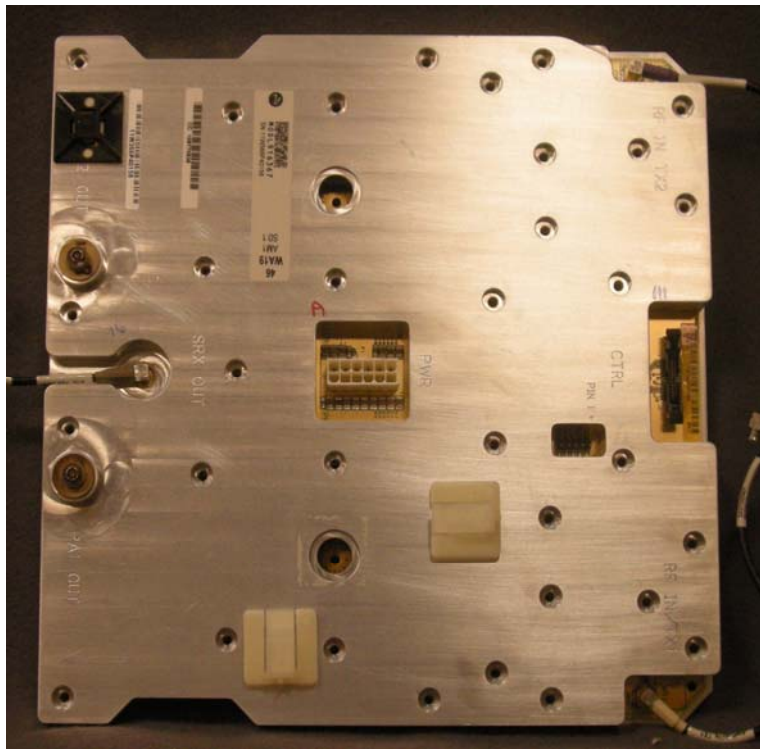




Internal Views of RRH

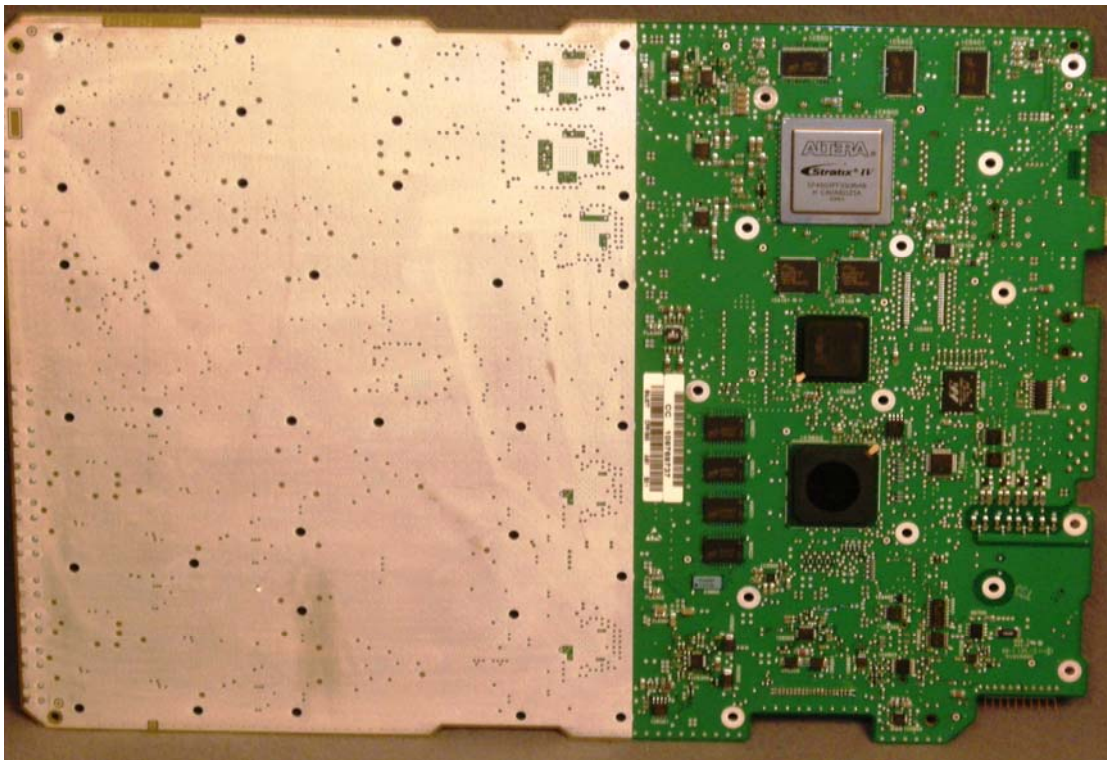
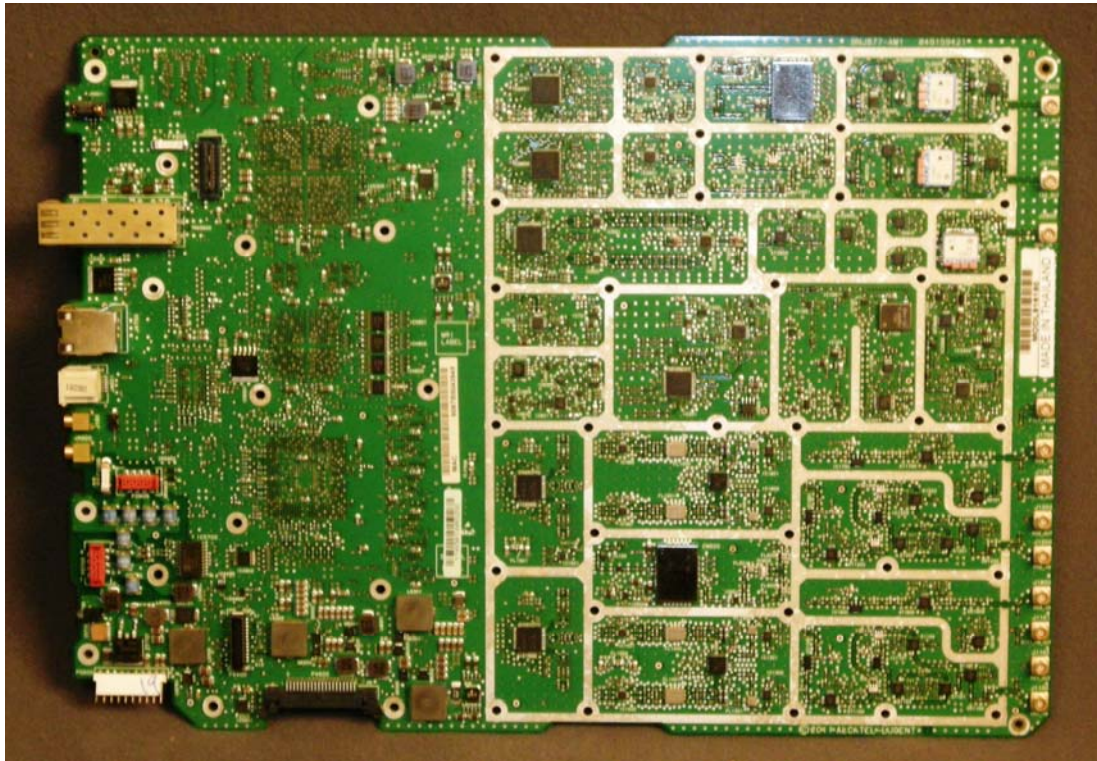


Front and Back Views of RHPA1900





Front and Rear Views of CRP1900 with Shielding Cover Removed





Front and Rear Views of RHPA1900 with Shielding Cover Removed

