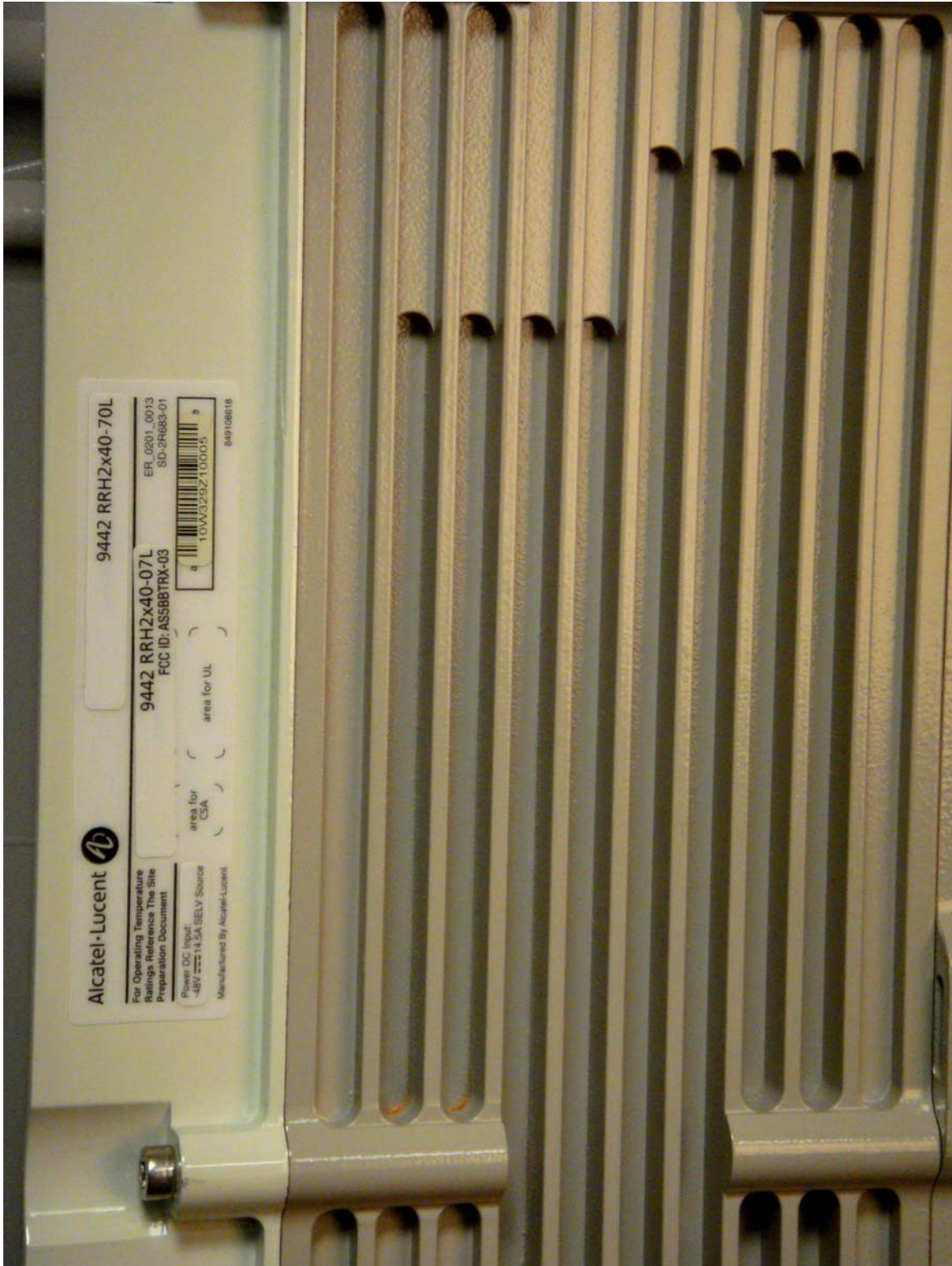


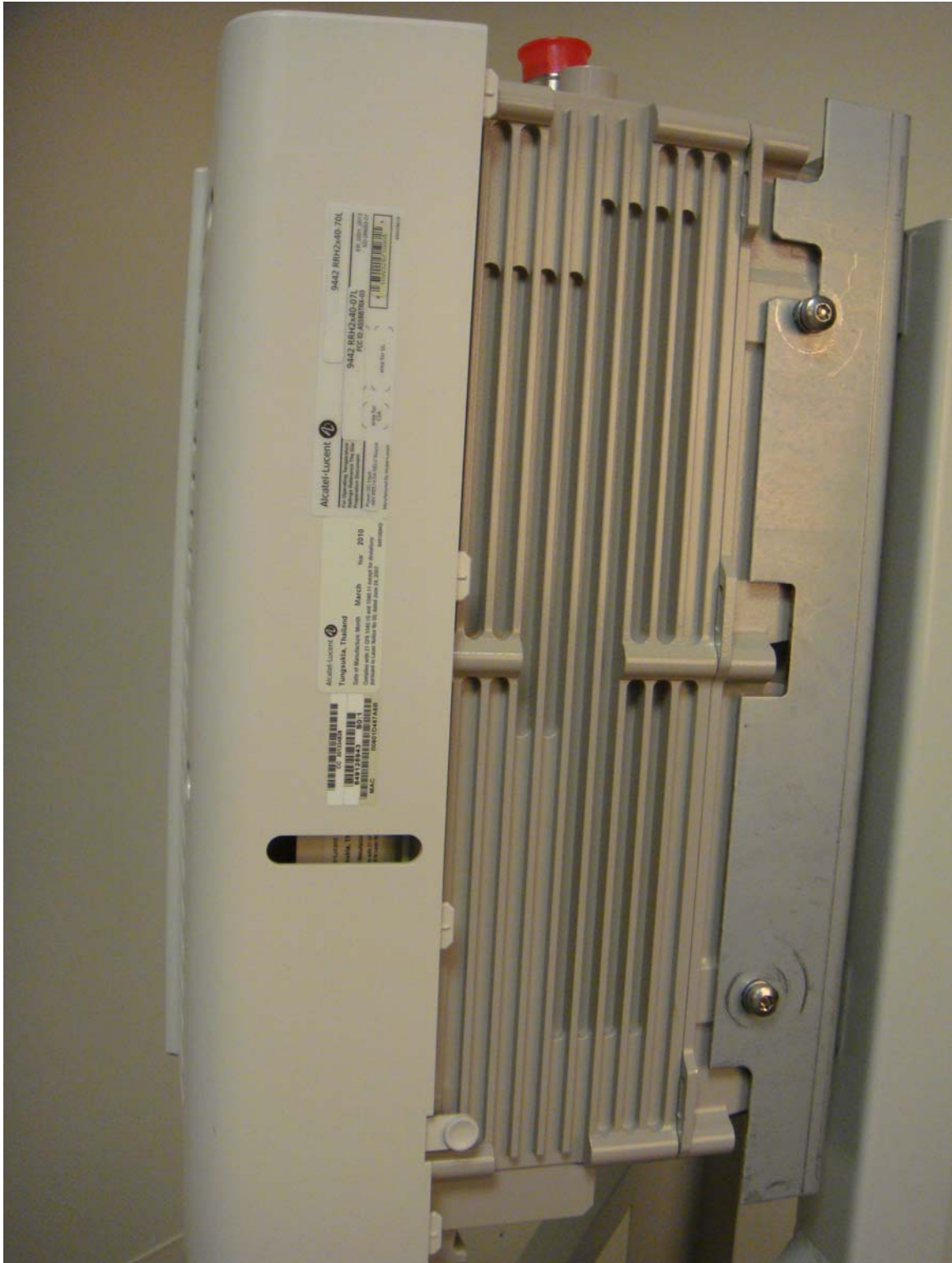
FCC ID Label

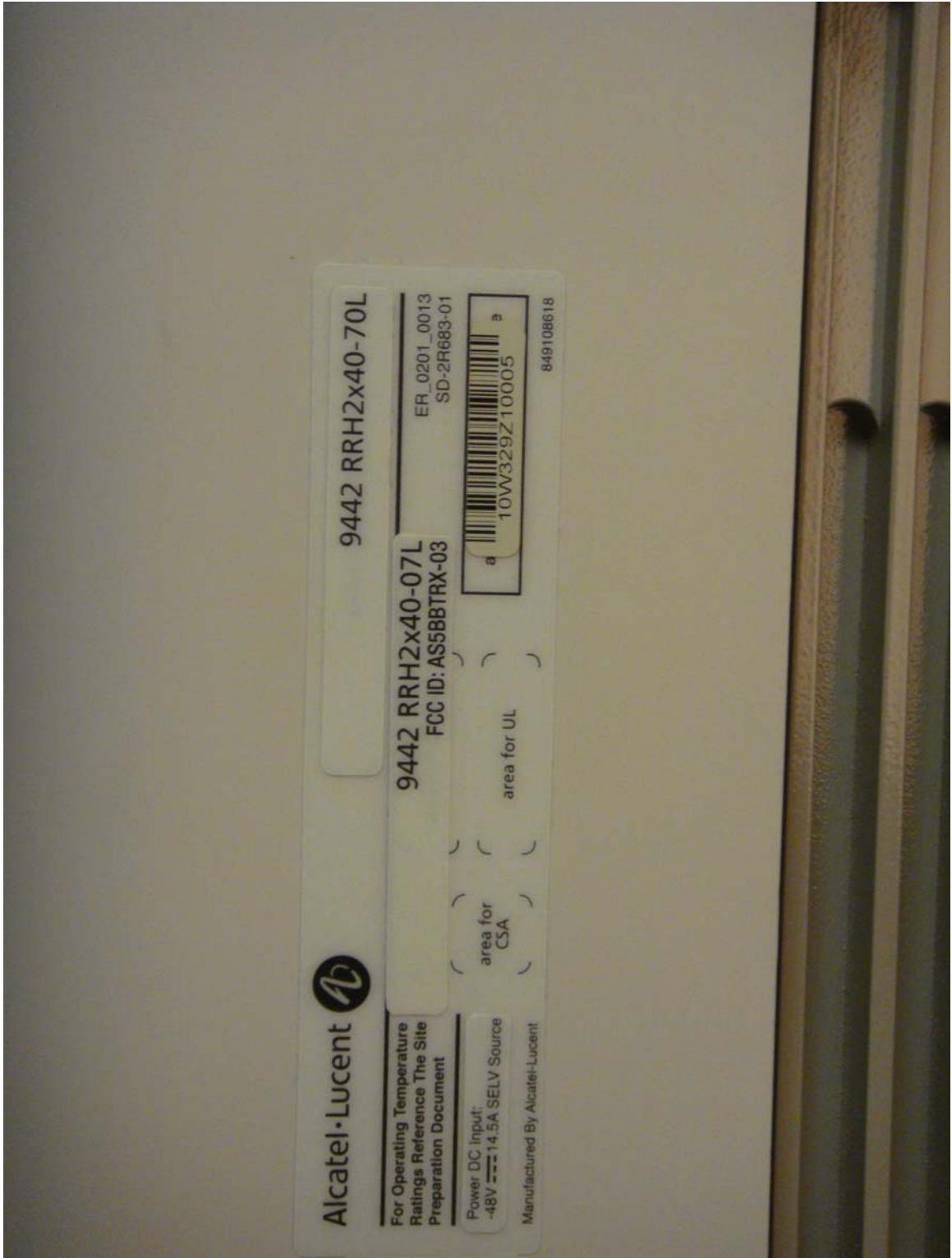
**Photograph of FCC ID Label Affixed on
RRH2X40-70L**

FCC ID Label on RRH2x40-70L



FCC ID Label on RRH2x40-AWS Solar Shield





Alcatel-Lucent

For Operating Temperature Ratings Reference The Site Preparation Document

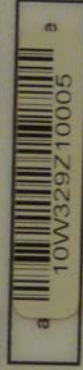
Power DC Input: -48V --- 14.5A SELV Source

Manufactured By Alcatel-Lucent

9442 RRH2x40-70L

9442 RRH2x40-07L
FCC ID: AS5BBTRX-03

ER_0201_0013
SD-2R683-01



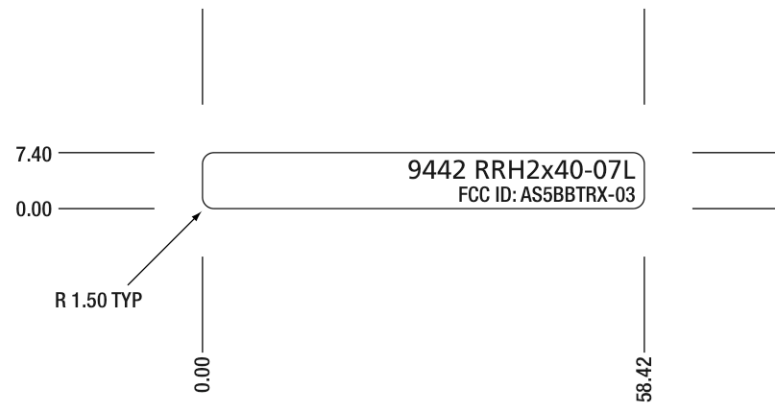
849108618

area for CSA

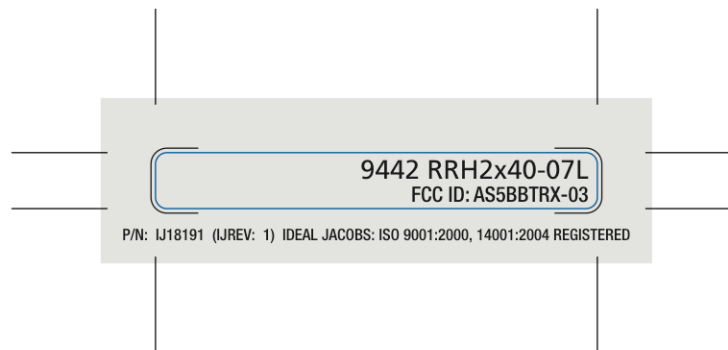
area for UL

FCC ID Label Drawing

SPEC DRAWING
FOR REFERENCE ONLY
(DO NOT USE FOR REPRODUCTION)



ORIGINAL ARTWORK
USE FOR REPRODUCTION
COMPOSITE



ORIGINAL ARTWORK
USE FOR REPRODUCTION
DIE LINE



Ideal Jacobs Corporation • 515 Valley Street • Maplewood, NJ 07040 • 973-275-5100 • FAX: 973-275-5161 • email: info@idealjacobs.com

Title: 9442 RRH2x40-07L FCC ID Sub Label	Materials: 10mil velvet/matte polycarbonate 8B35V (VTM-2) with 3M 467 permanent adhesive or equivalent(s)
P/N(Comcode): IJ18191	Inks: Subsurface print Black and Cool Gray 1 OS20000
Cust. Rev#: --	Text: 10pt Frutiger 55 Roman 8pt Helvetica Neue 67 Medium Condensed
Engineer: --	Dwg. Date: -- Client: Ideal Jacobs Die Strike: .02" Job#: 96934

Certifications: Labels shall meet UL and CSA requirements where applicable. Vendor must be UL and/or CSA approved. Documentation verifying the vendor's certifications for the material shall be provided by the vendor with each package/container. Labels are RoHS compliant.

Dimensions in: MILLIMETERS Tolerances: 0.25mm (Metric) • Symbology agrees with: ISO 1101 and ISO 1302

IJREV	DESCRIPTION	DRAWN	CHECKED	DATE	APPROVED	DATE
1	Initial release.	IDG/IOL	IOL/RG3	04-08-10	Mike Stolc	05-11-10