

Figure 53
DC Power Board (Component Side), M/N LM-700*



Figure 54
DC Power Board (Foil Side), M/N LM-700*



Figure 55
Internal View (Removed Back Cover), M/N LM-700*



Figure 56
Internal View, M/N LM-700*

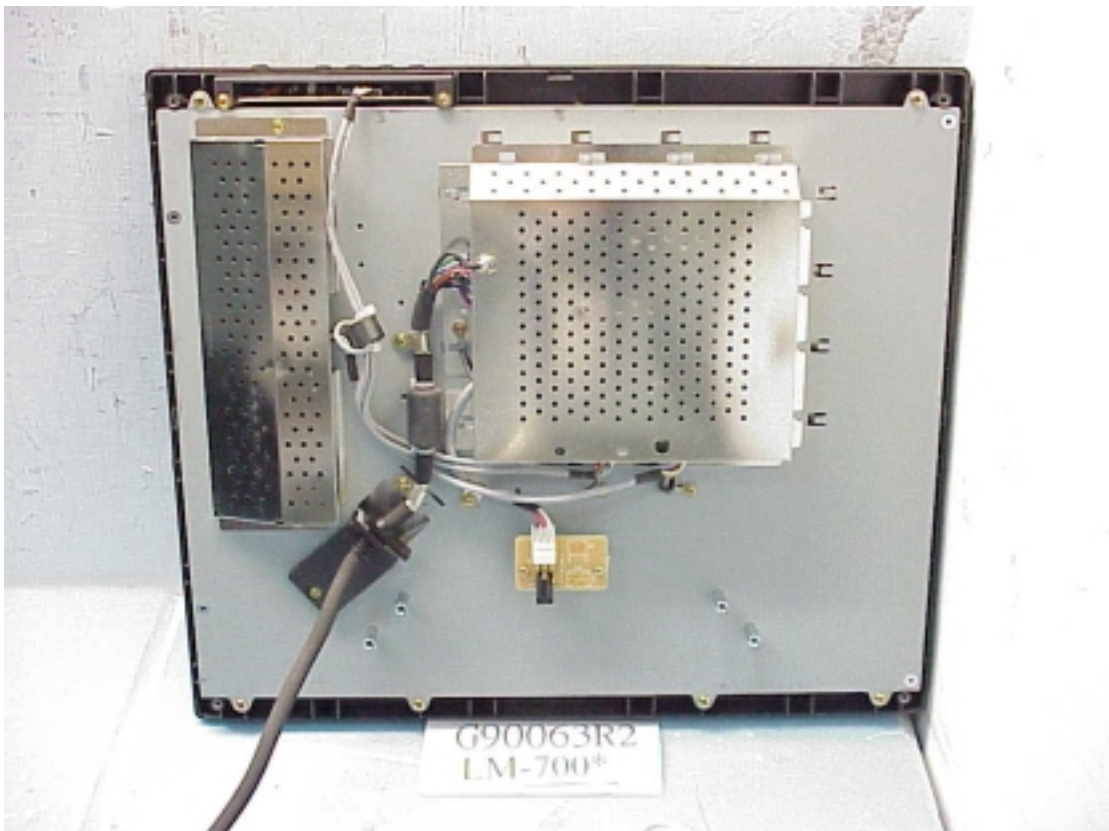


Figure 57
Internal View, M/N LM-700*

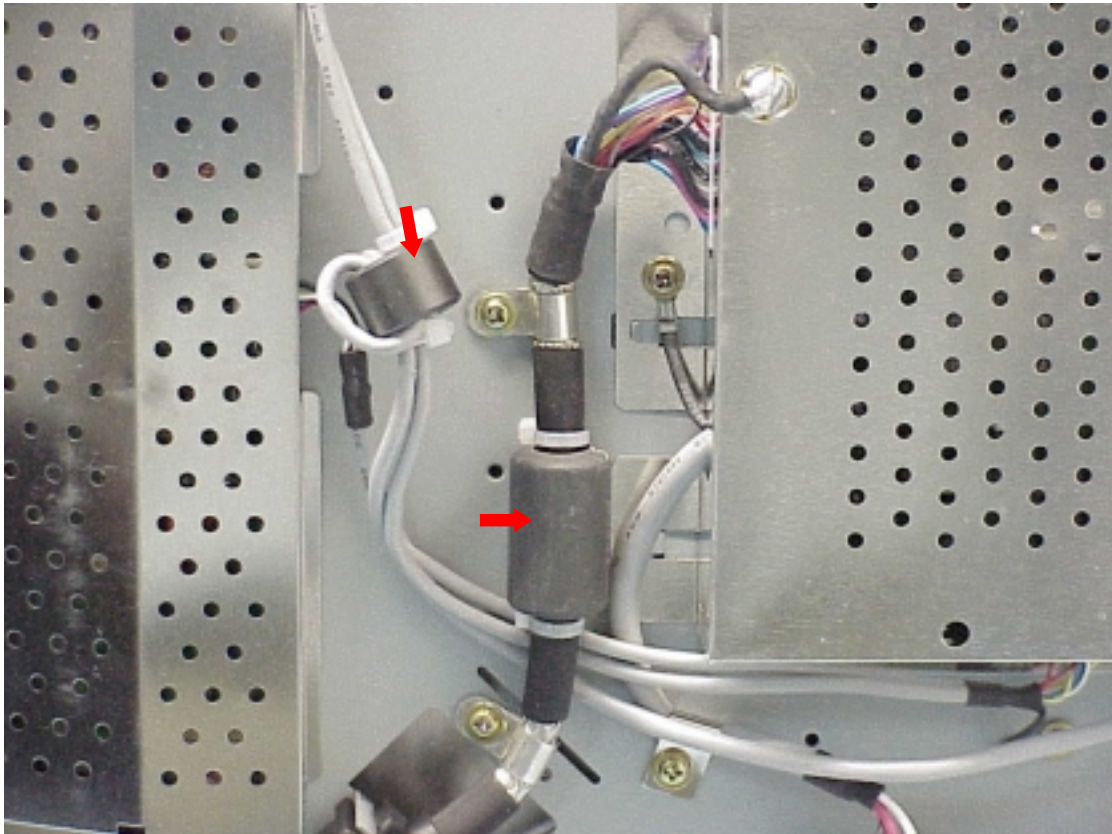


Figure 58
Internal View, M/N LM-700*

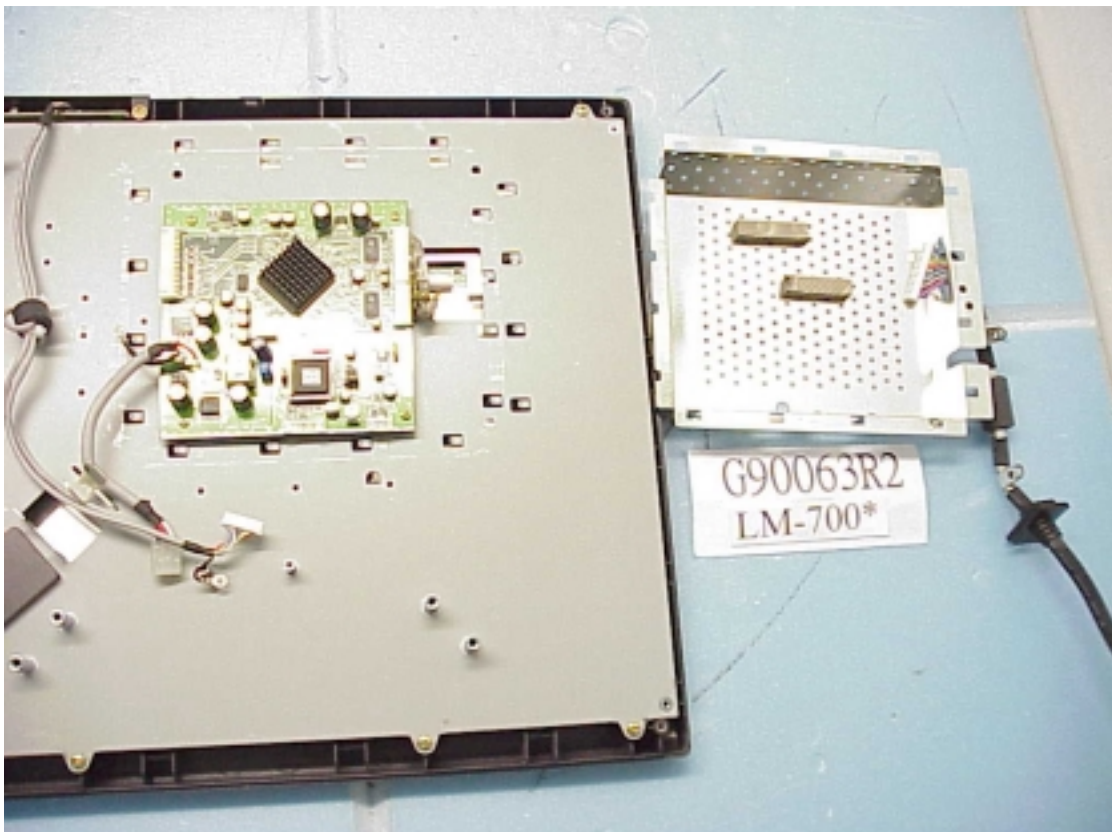


Figure 59
Main Board (Component Side), M/N LM-700*



Figure 60
Main Board (Foil Side), M/N LM-700*

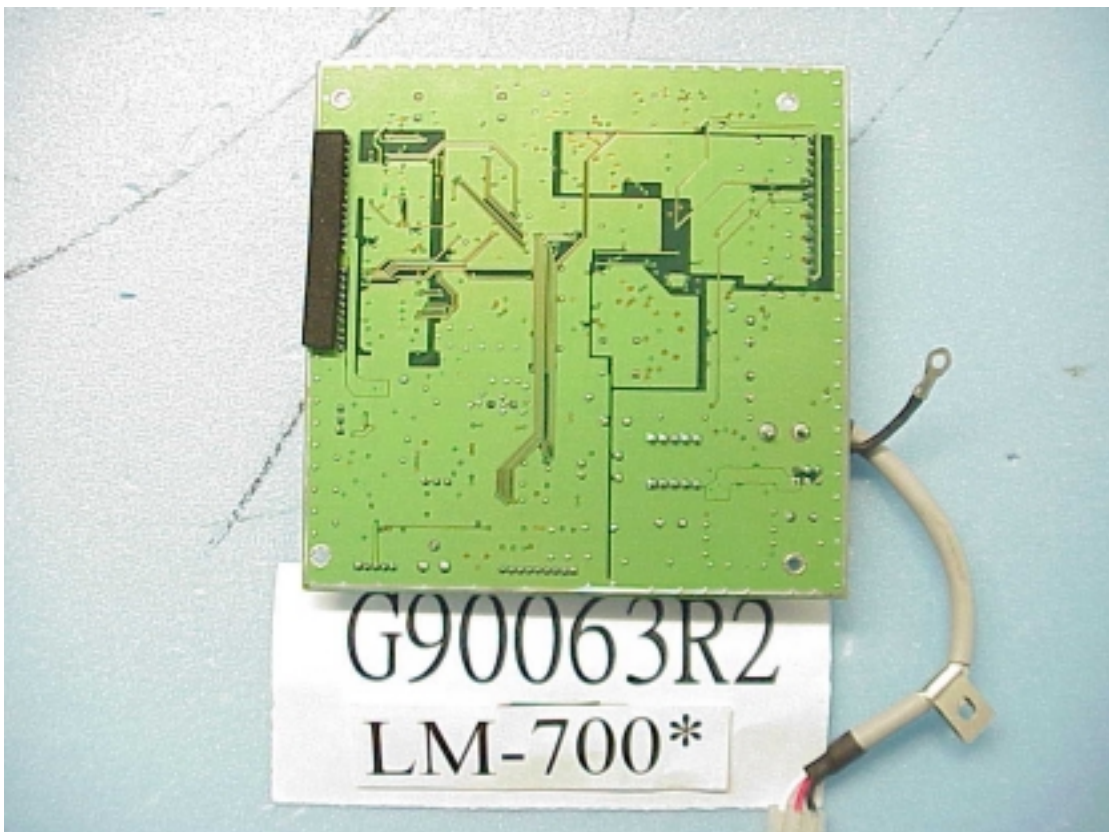


Figure 61
Internal View, M/N LM-700*

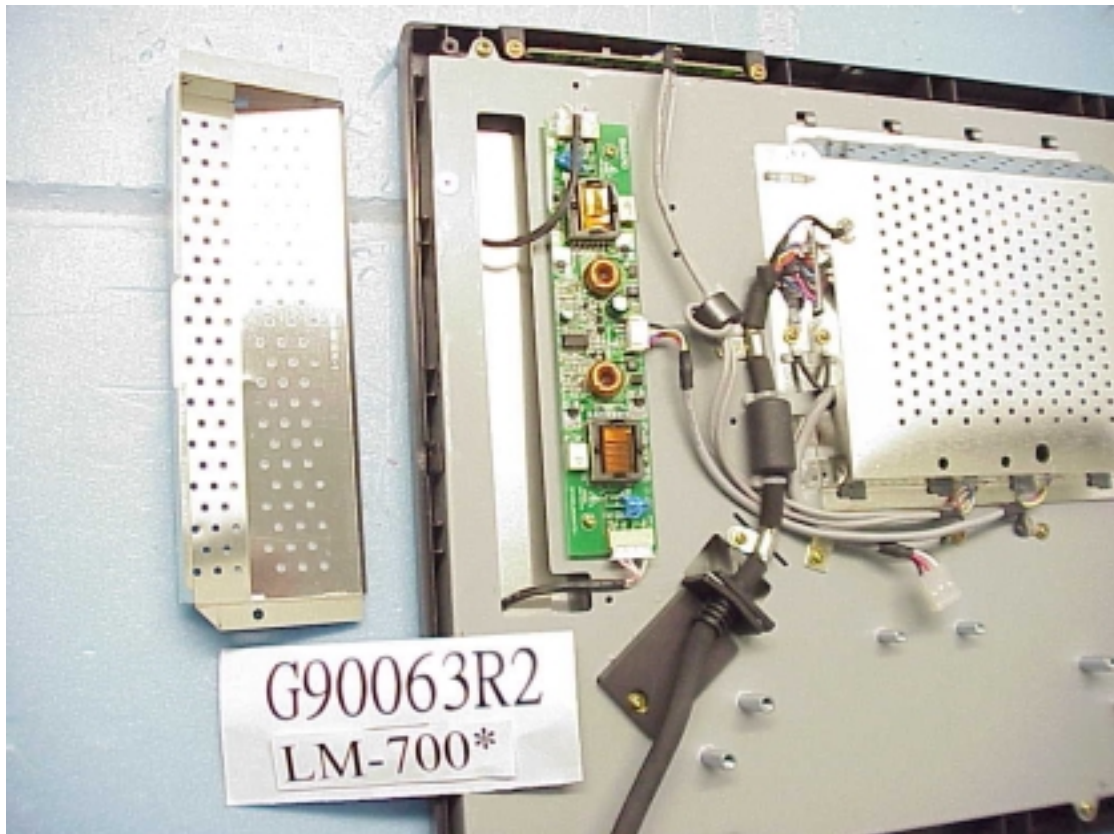


Figure 62
Inverter Board (Component Side), M/N LM-700*



Figure 63
Inverter Board (Foil Side), M/N LM-700*



Figure 64
Internal View, M/N LM-700*

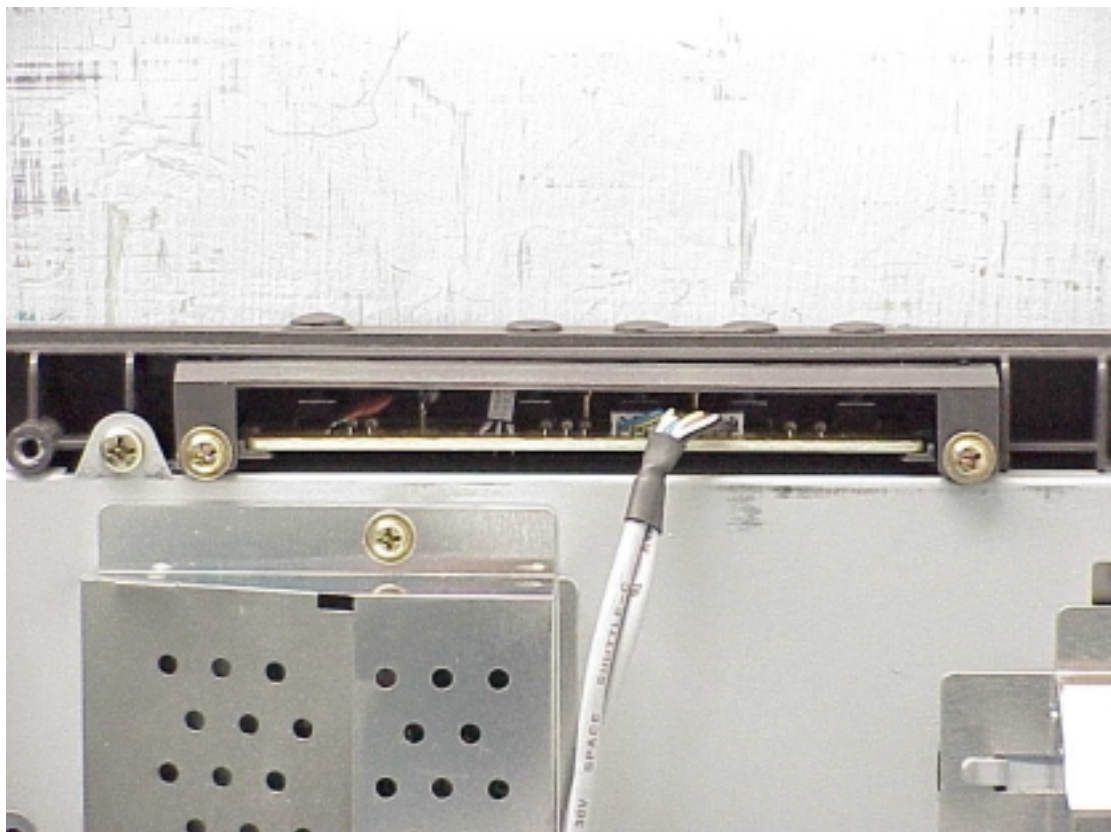


Figure 65
Function Adjustrment Board (Component Side), M/N LM-700*



Figure 66
Function Adjustrment Board (Foil Side), M/N LM-700*

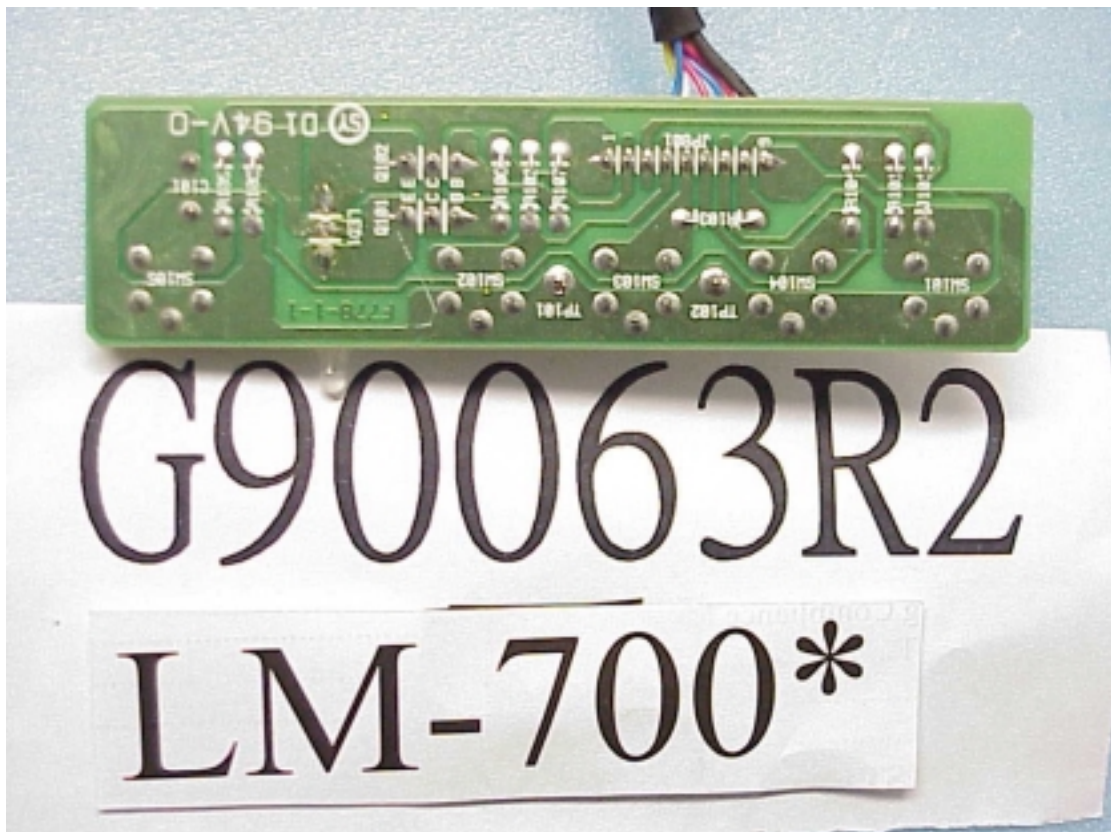


Figure 67
Internal View, M/N LM-700*

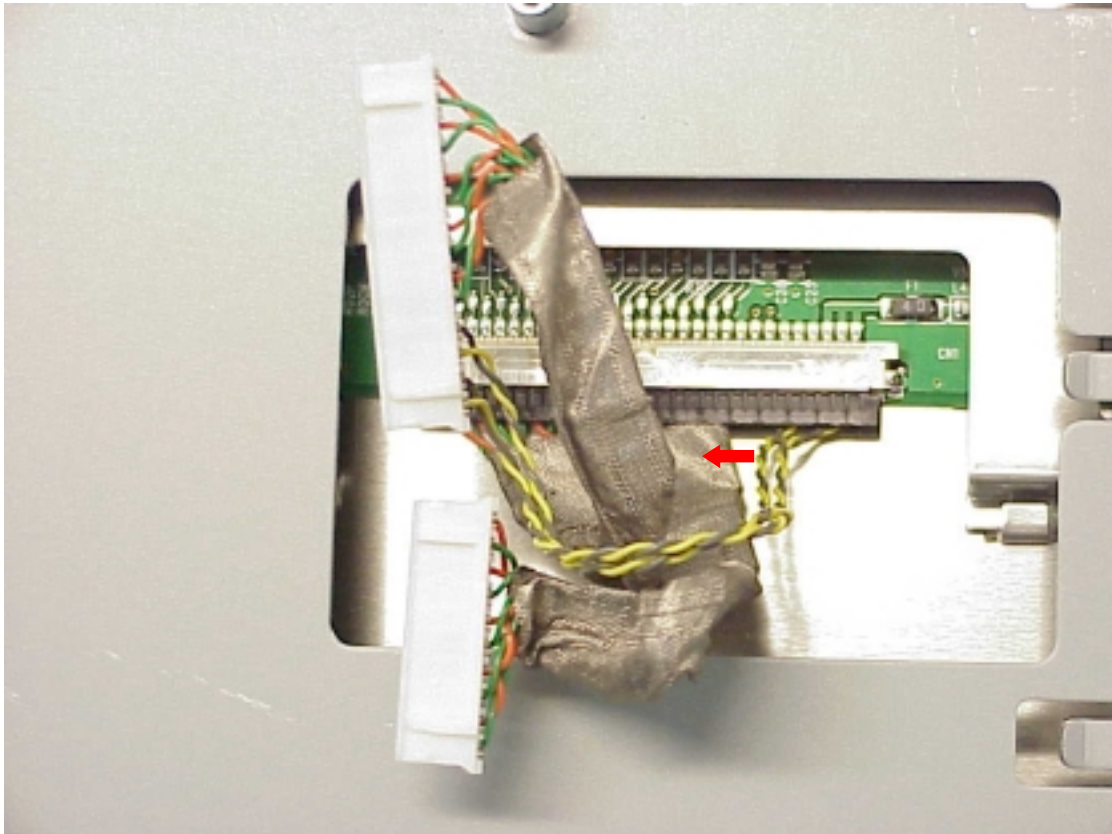


Figure 68
Internal View of LCD Panel, M/N LM-700*



Figure 69
Internal View of LCD Panel, M/N LM-700*

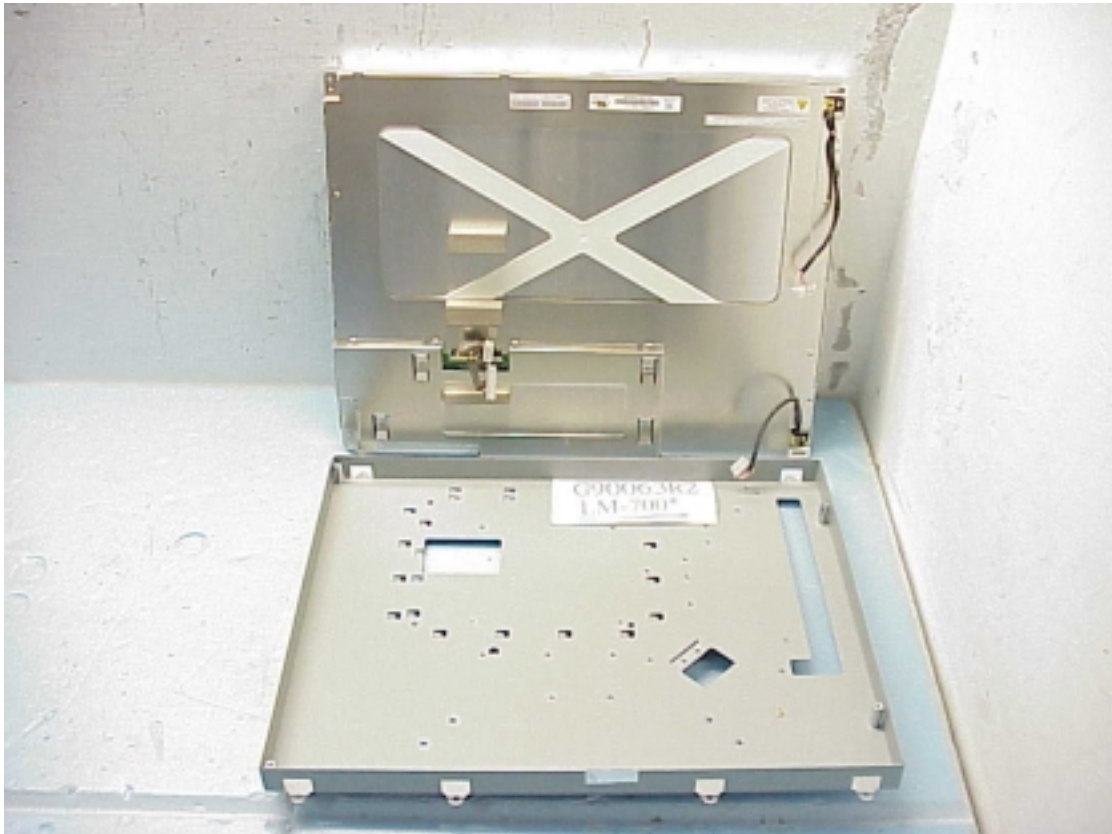


Figure 70
Internal View of LCD Panel, M/N LM-700*

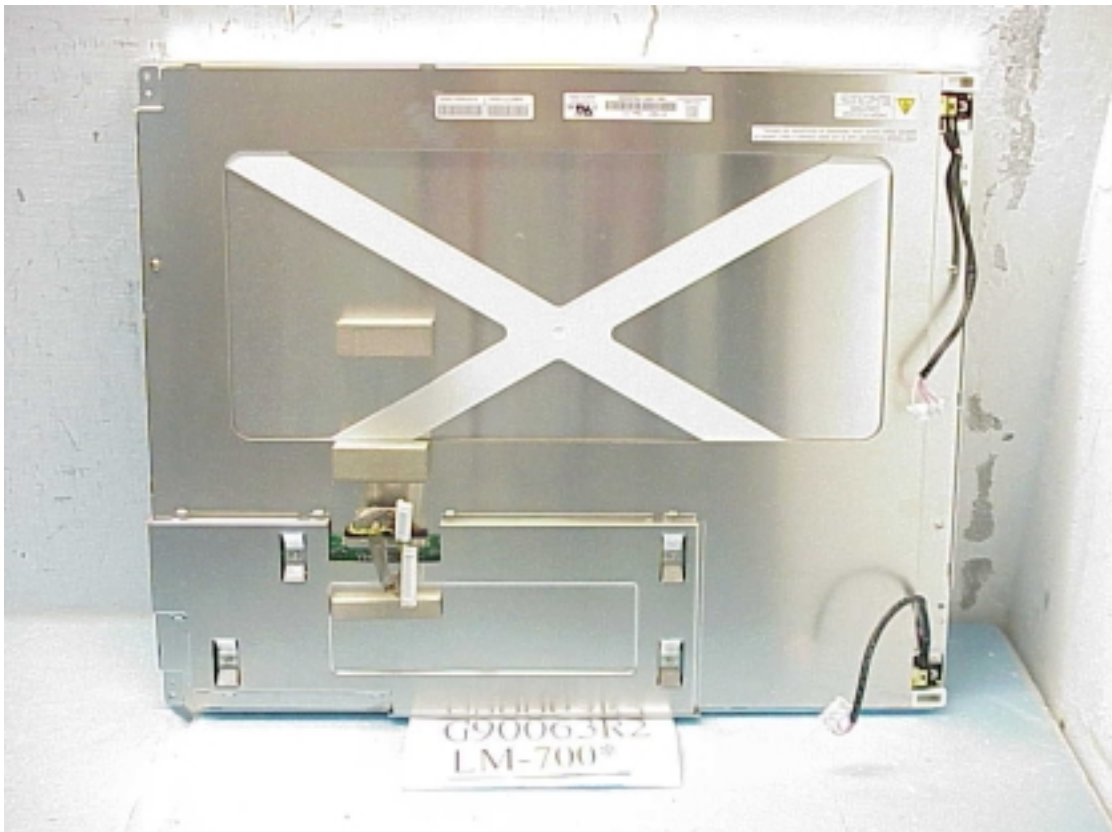


Figure 71
Control Board (Component Side) of LCD Panel, M/N LM-700*



Figure 72
Control Board (Foil Side) of LCD Panel, M/N LM-700*

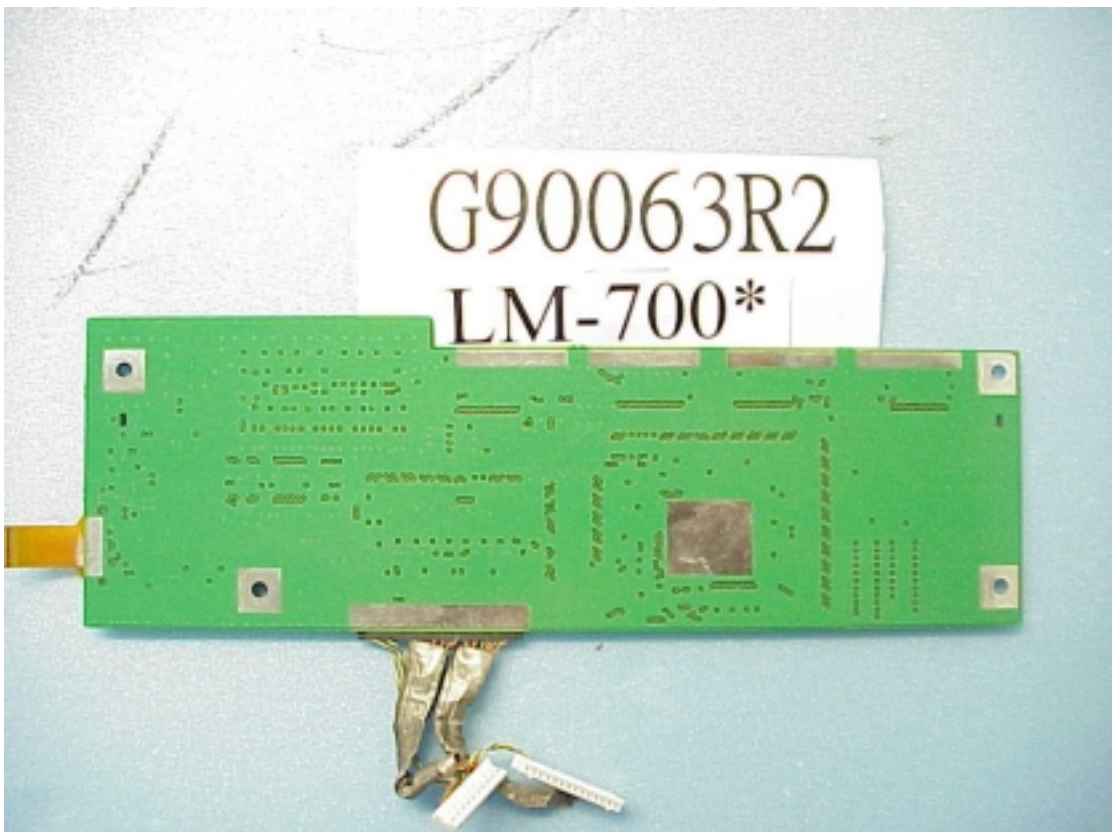


Figure 73
General Appearance of Power Adapter (Front View)



Figure 74
General Appearance of Power Adapter (Rear View)

