

Figure 5

Bottom Board (Component Side)

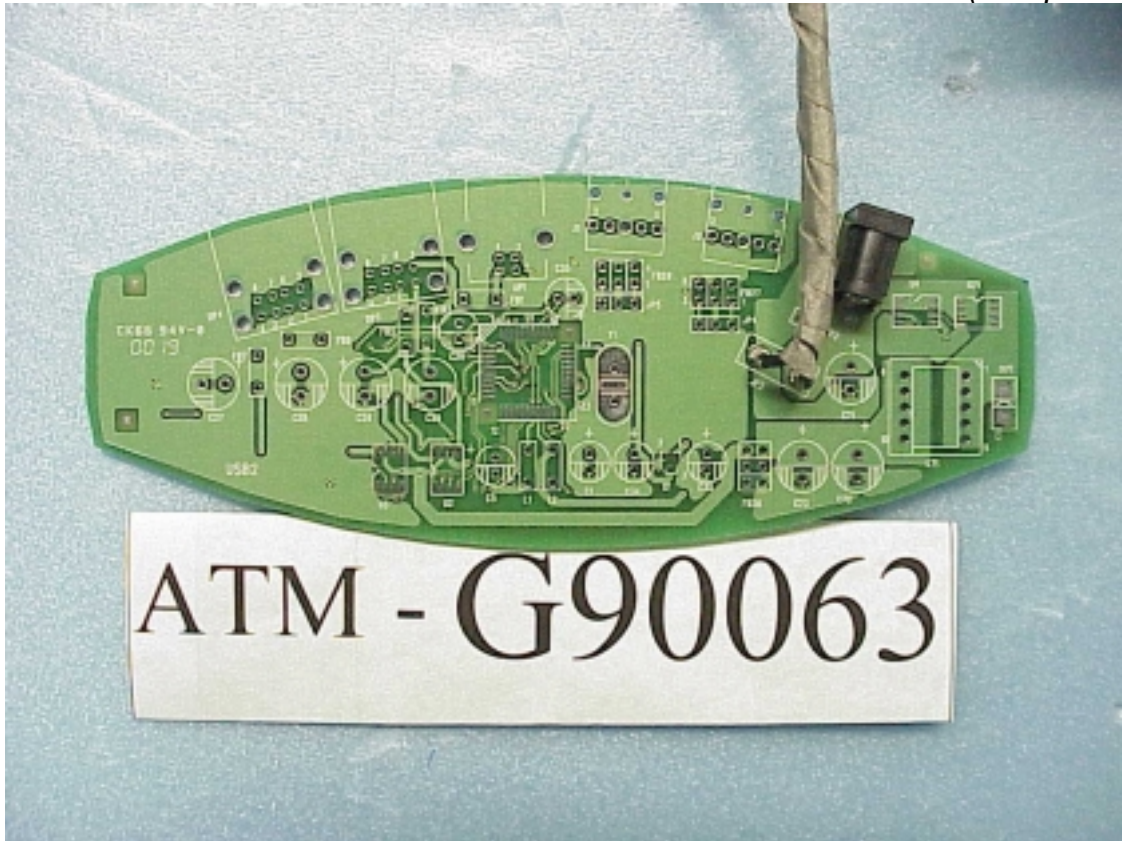


Figure 6

Bottom Board (Foil Side)



Figure 7

Removed Back Cover, Internal View

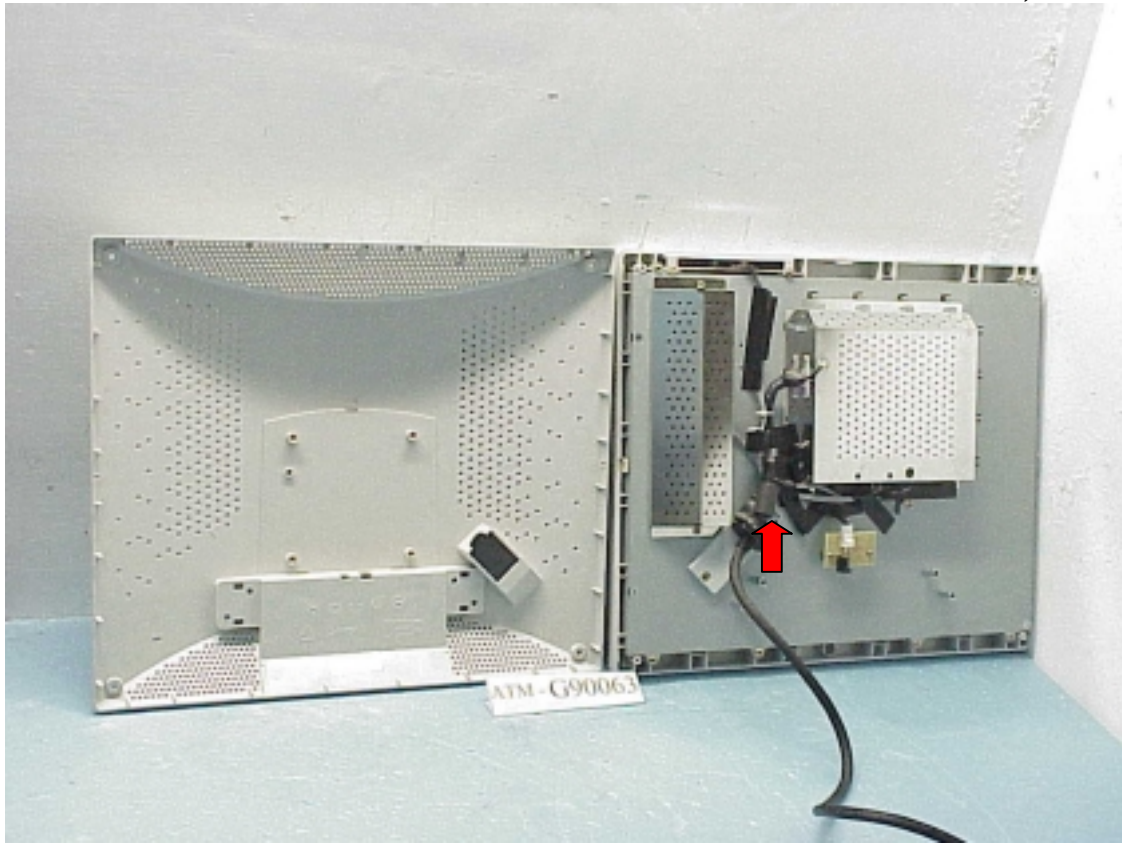


Figure 8
Internal View

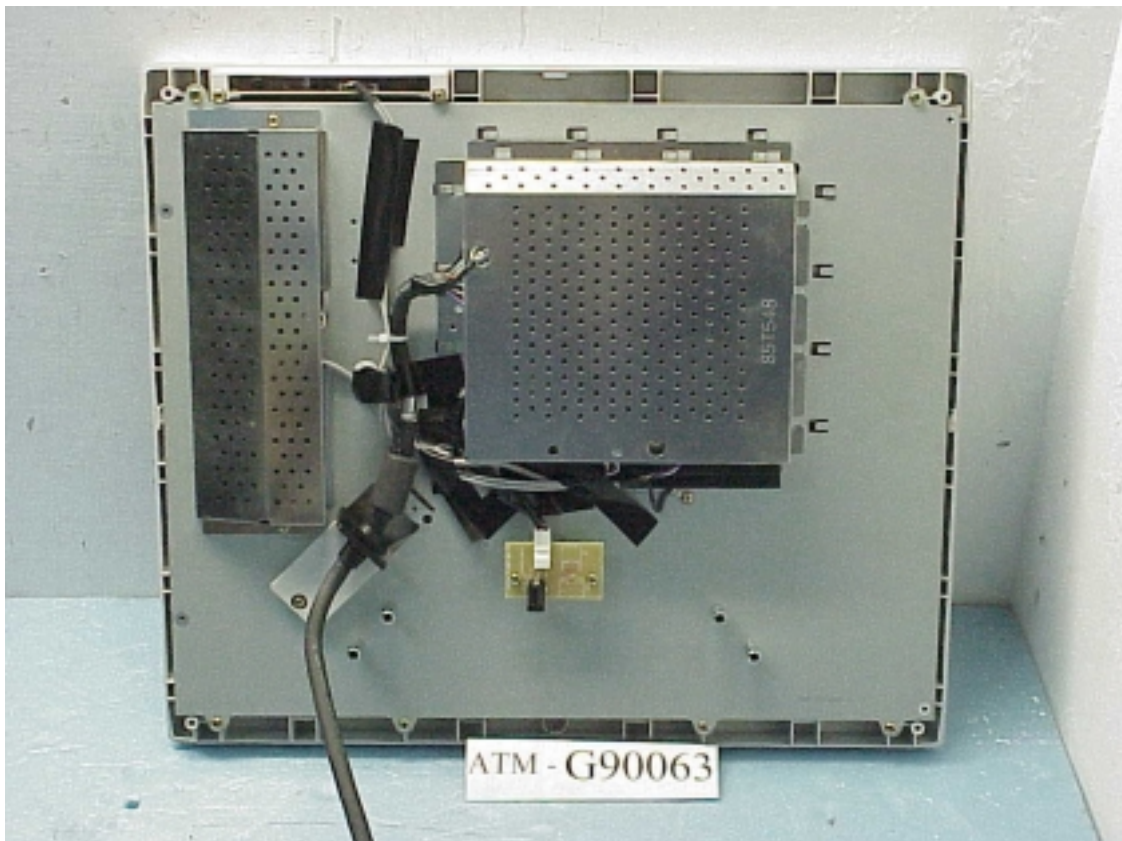


Figure 9
Internal View

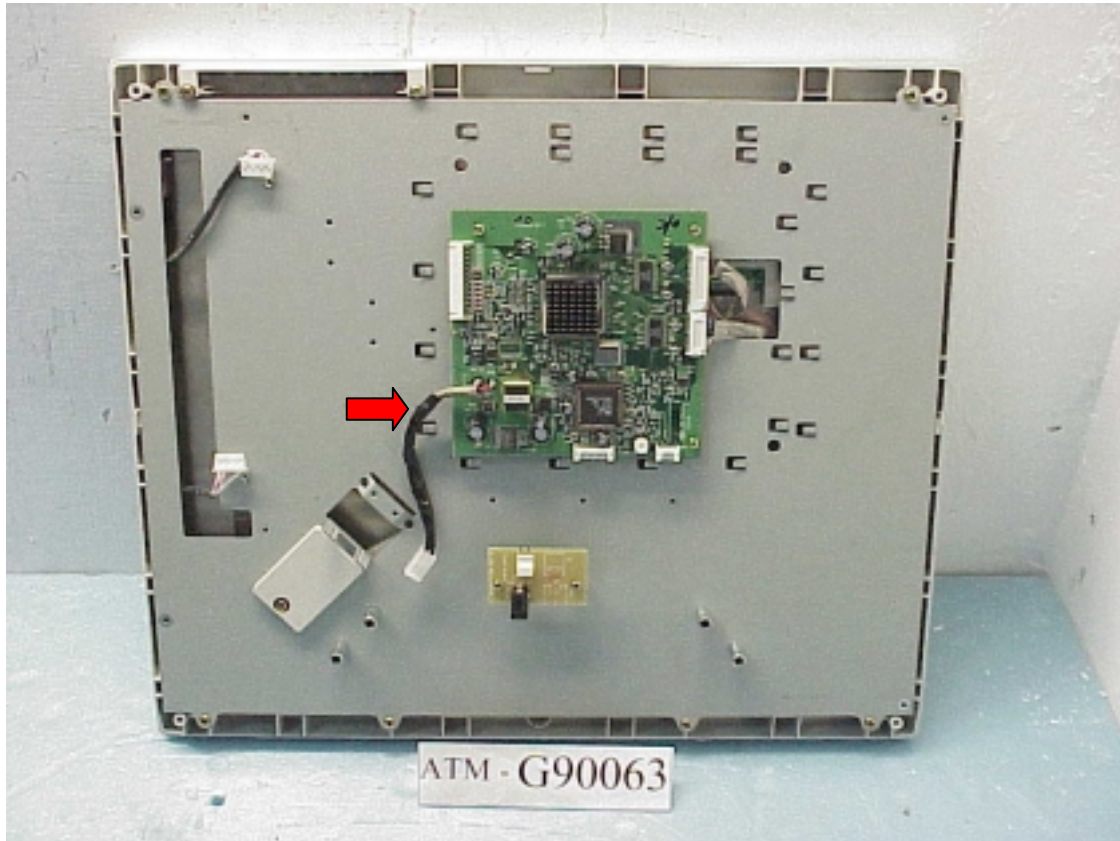


Figure 10
Main Board (Component Side)



Figure 11
Main Board (Foil Side)



Figure 12
Inverter Board (Component Side)



Figure 13
Inverter Board (Foil Side)



Figure 14
Function Adjustment Board (Component Side)

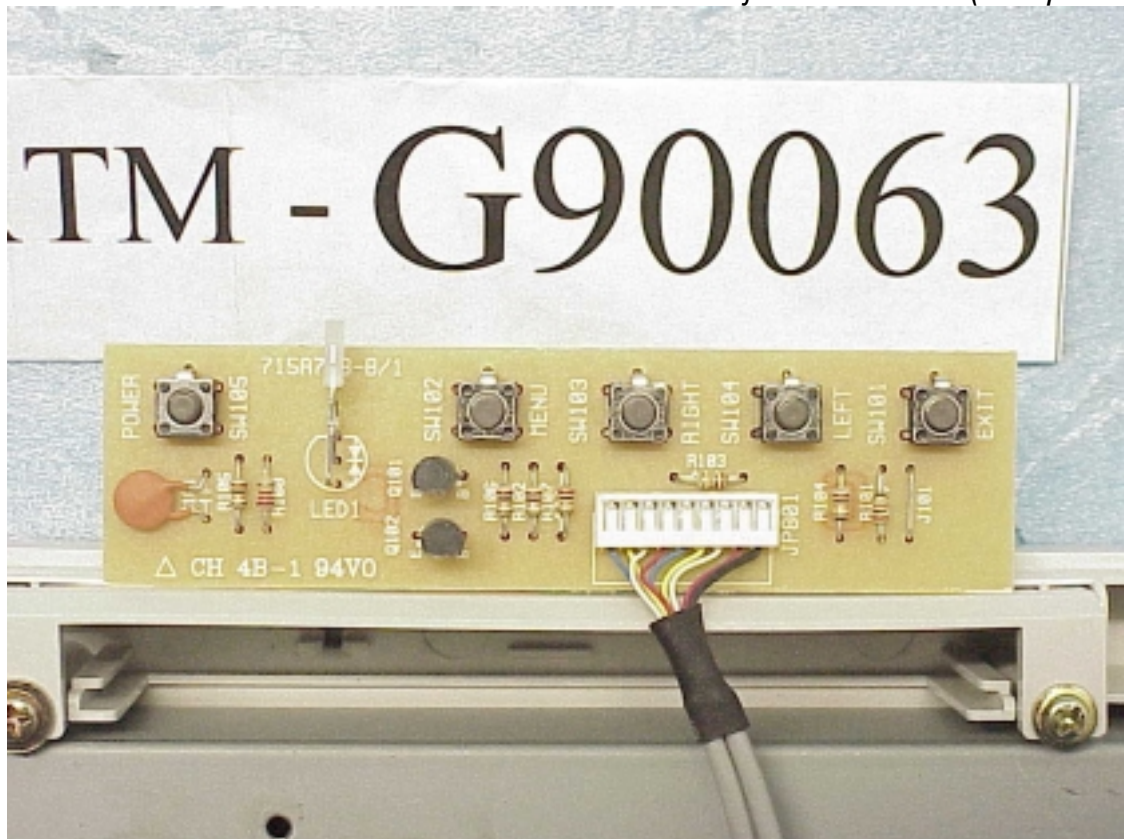


Figure 15

Function Adjustment Board (Foil Side)

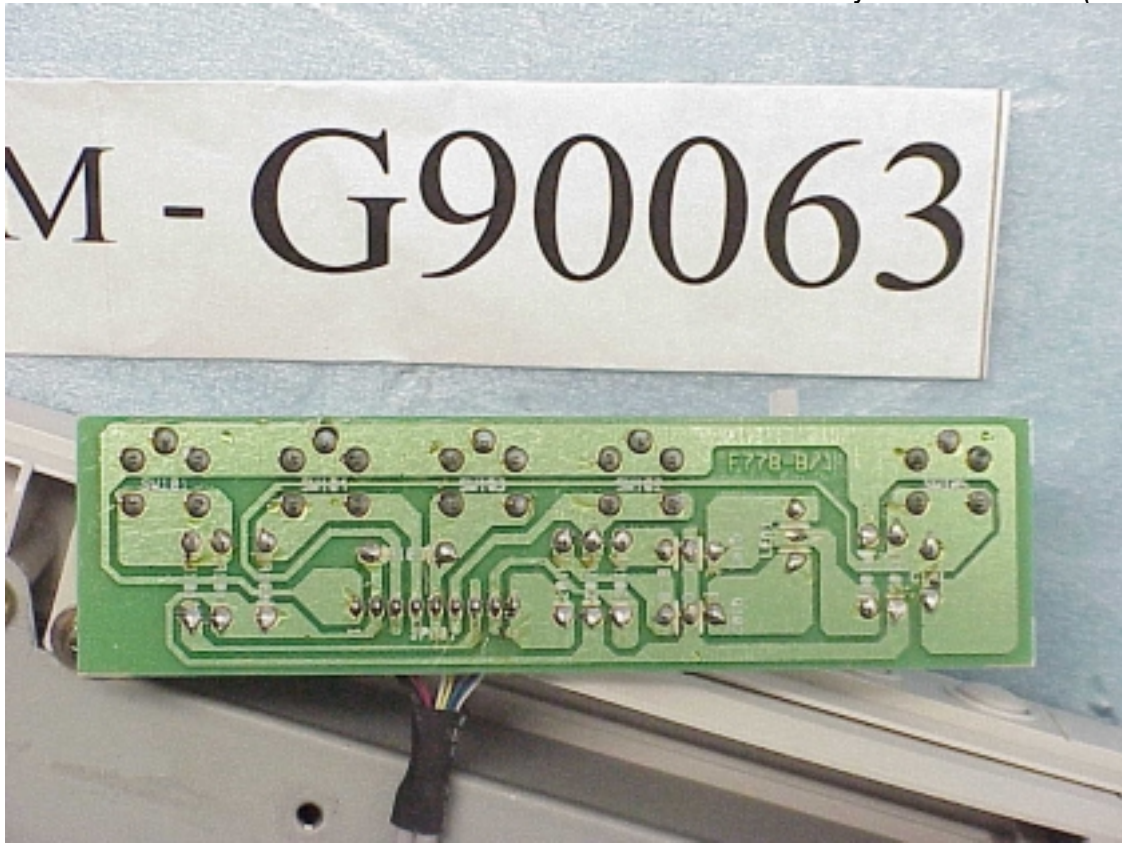


Figure 16

Internal View



Figure 17

Internal View of LCD Panel (# 1 Chi Mei LCD Panel)

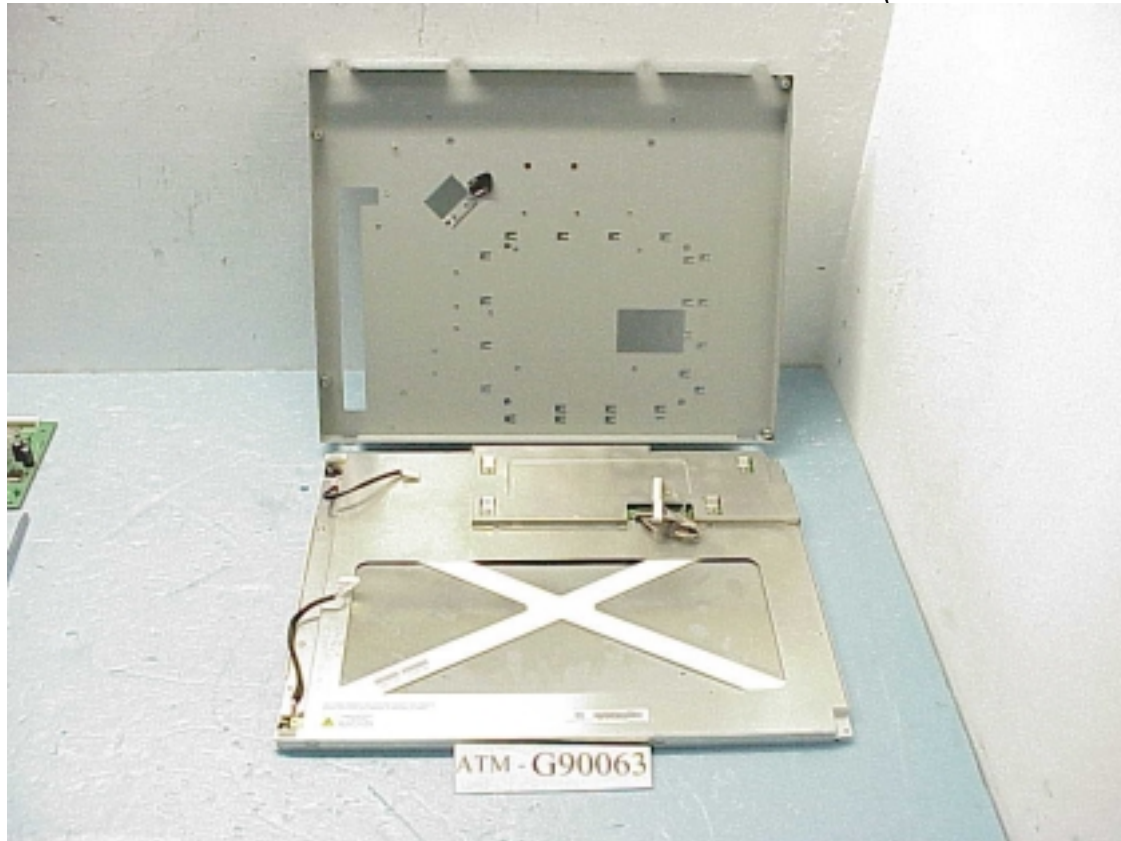


Figure 18

Control Board (Component Side, # 1 Chi Mei LCD Panel)



Figure 19

Control Board (Foil Side, # 1 Chi Mei LCD Panel)



Figure 20

Internal View of LCD Panel (# 2 Chi Mei LCD Panel)

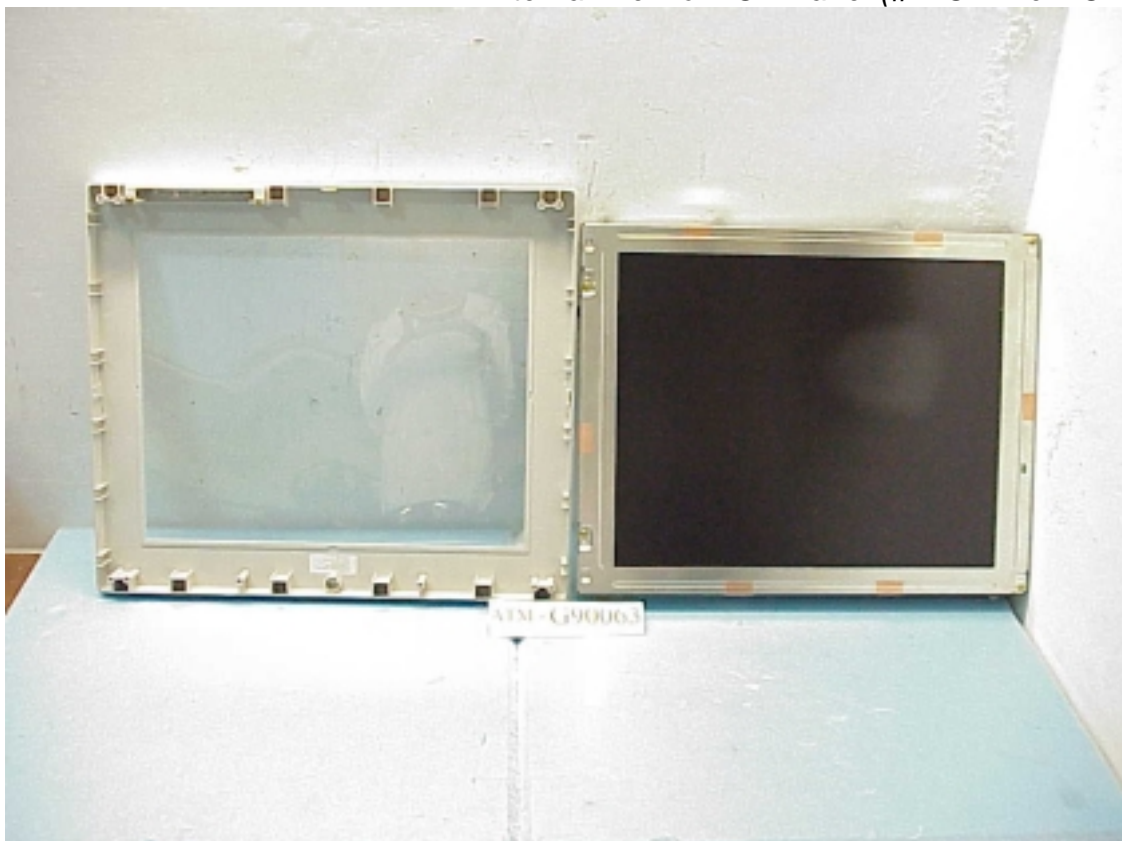


Figure 21

Internal View of LCD Panel (# 2 Chi Mei LCD Panel)

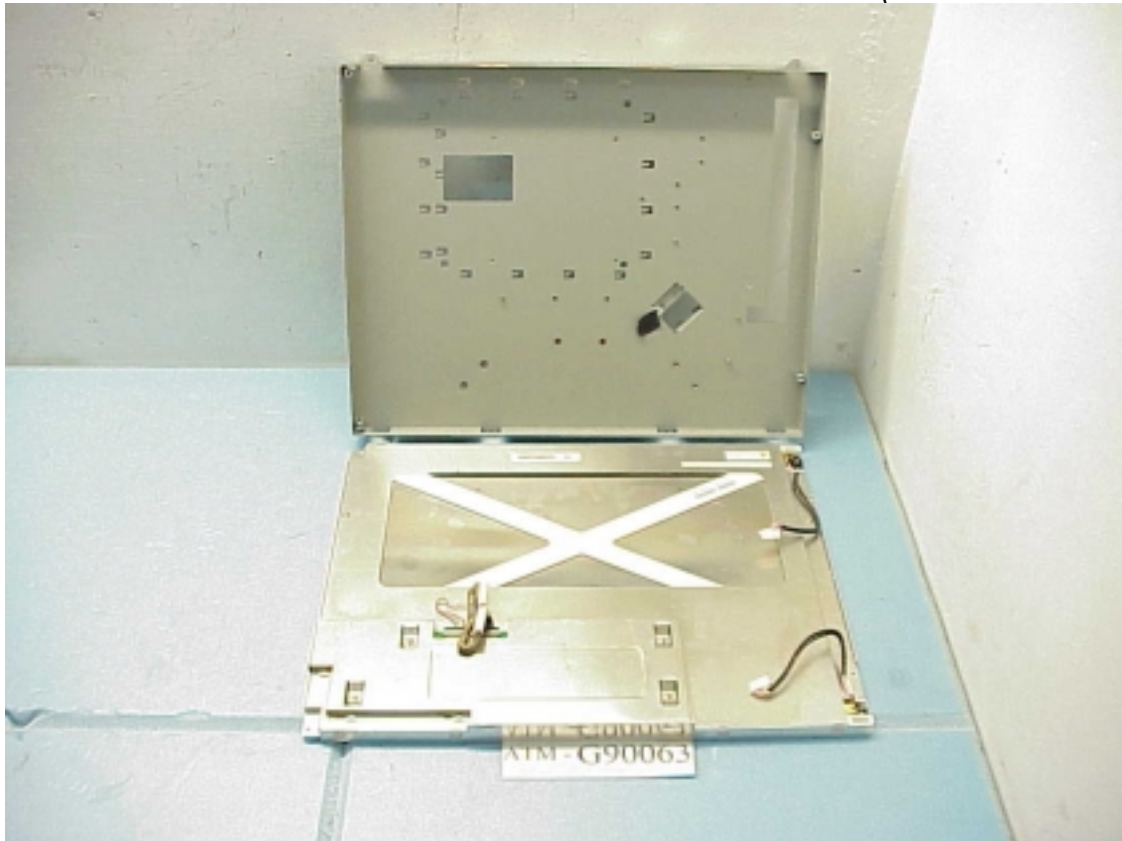


Figure 22

Control Board (Component Side, # 2 Chi Mei LCD Panel)

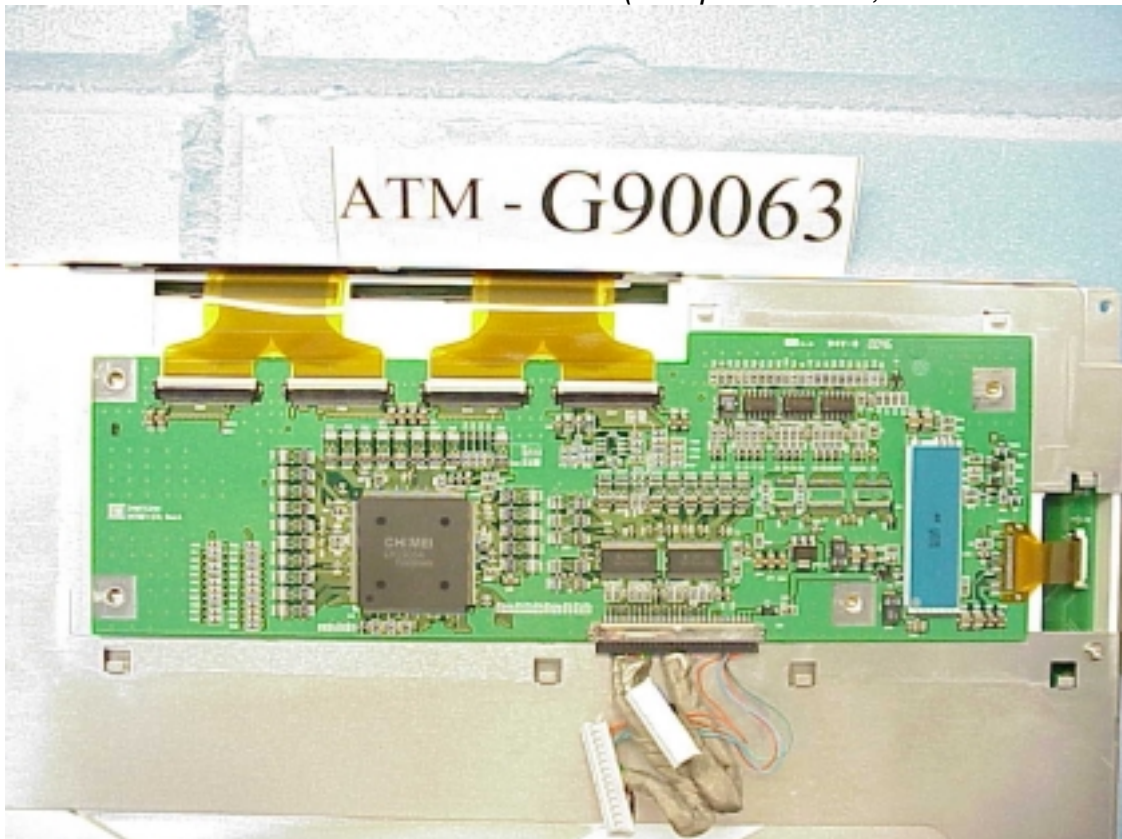


Figure 23

Control Board (Foil Side, # 2 Chi Mei LCD Panel)

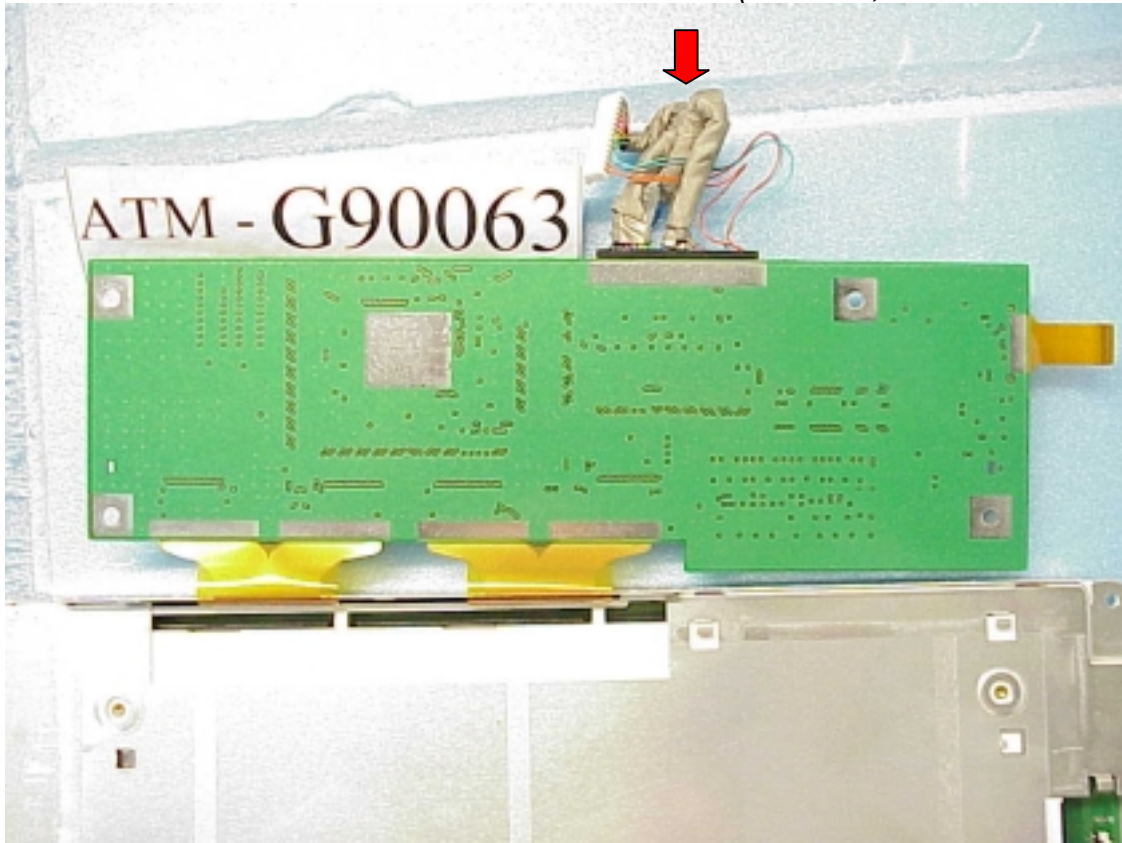


Figure 24

Internal View of LCD Panel (# 3 Unipac LCD Panel)



Figure 25

Internal View of LCD Panel (# 3 Unipac LCD Panel)

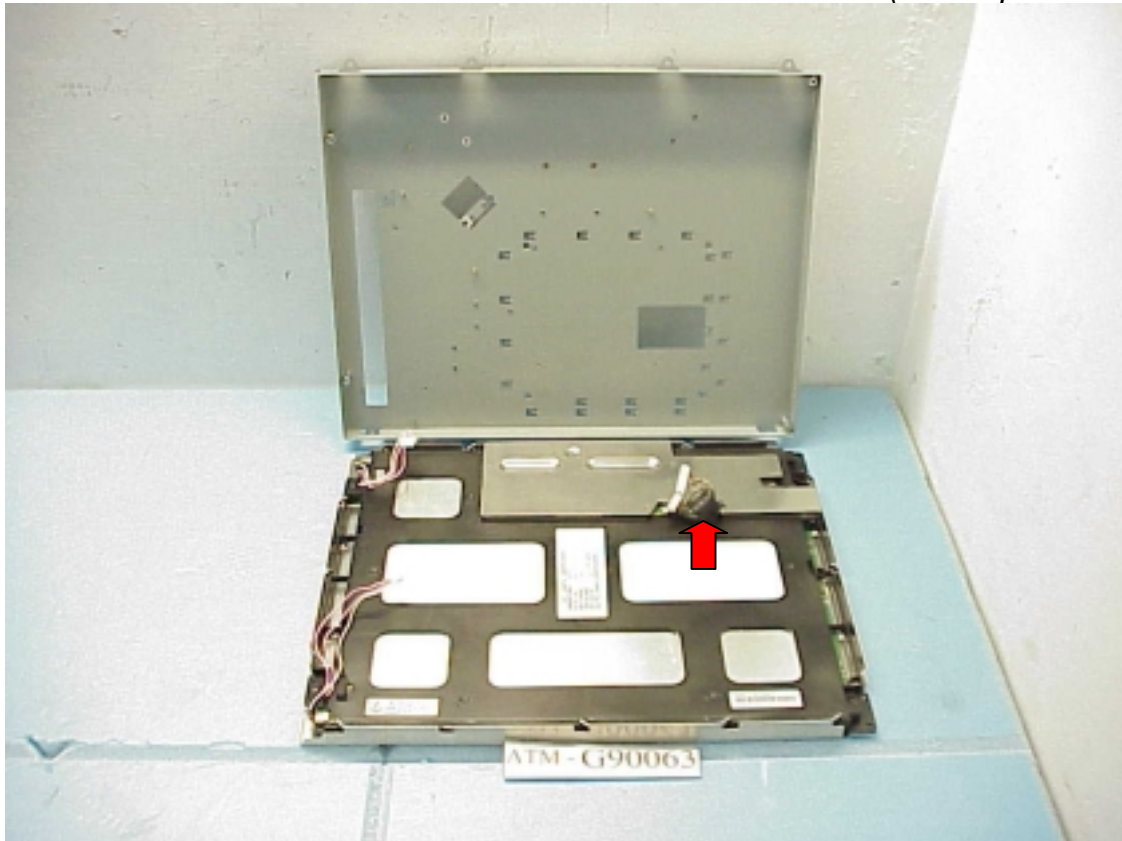


Figure 26

Cover Removed, Control Board (Component Side, # 3 Unipac LCD Panel)

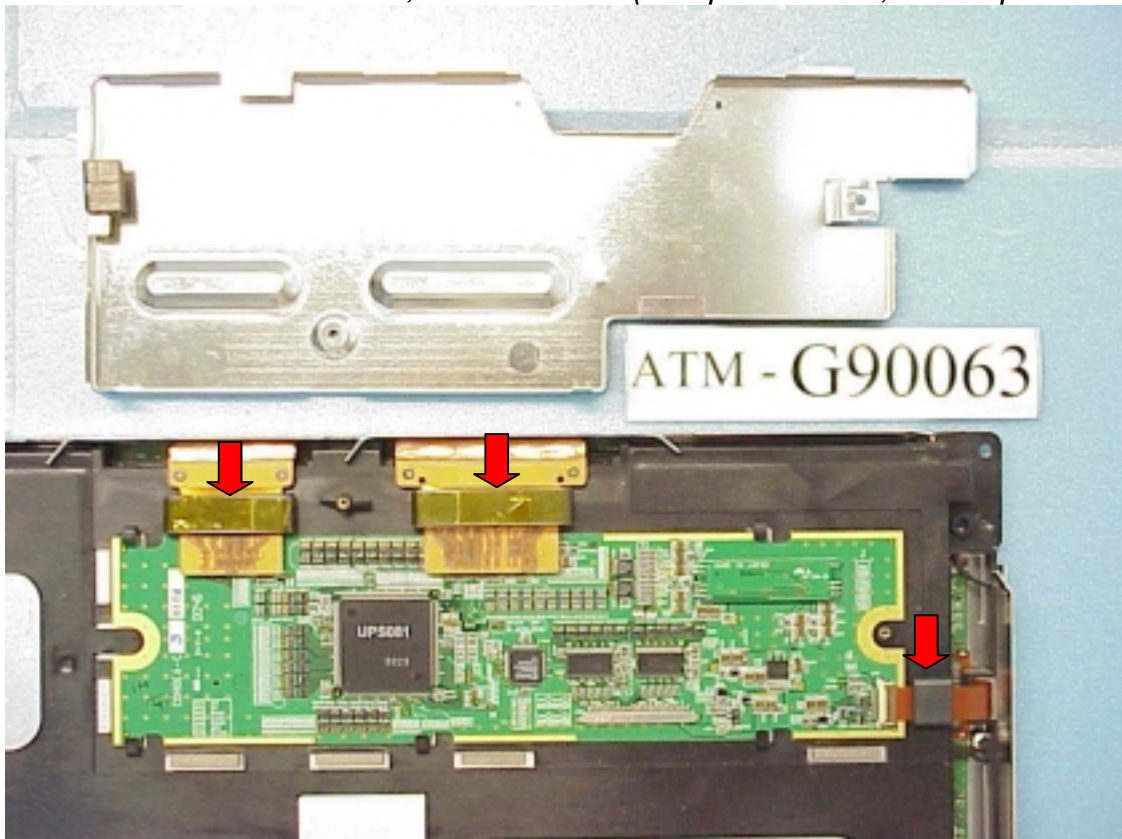


Figure 27

Control Board (Foil Side, # 3 Unipac LCD Panel)

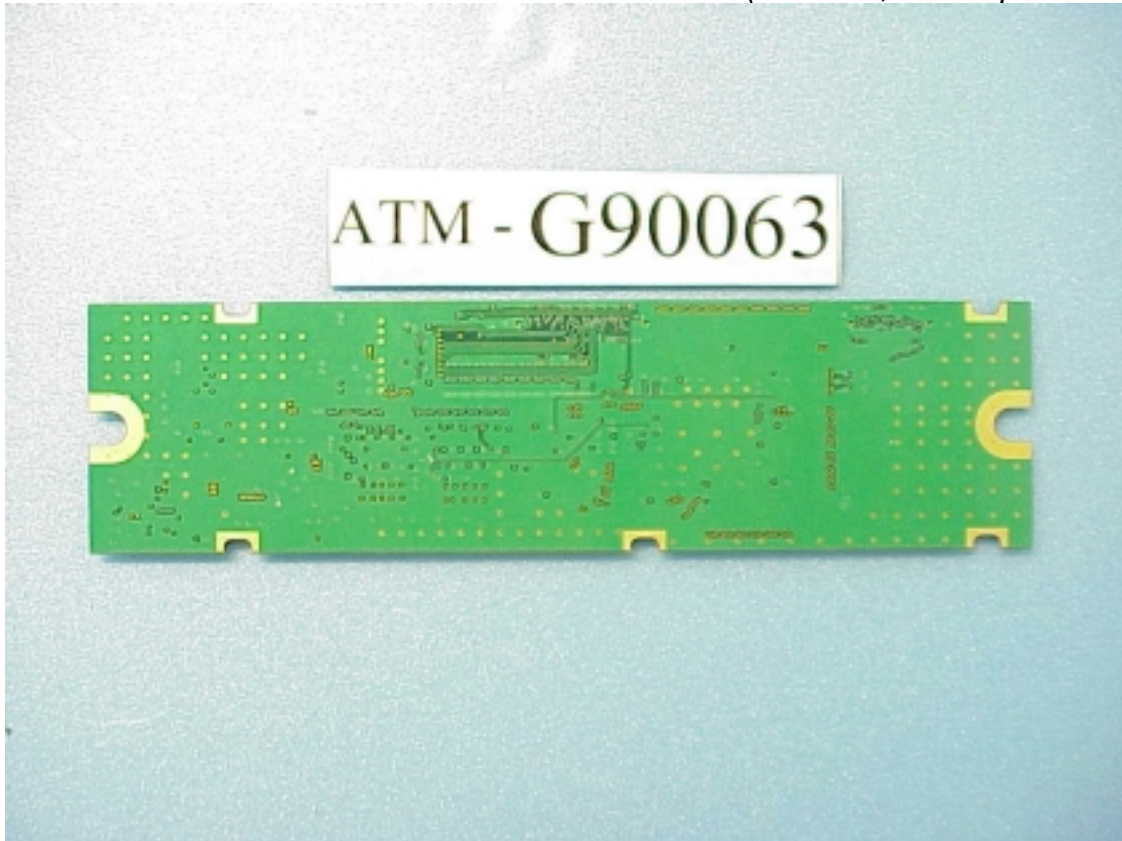


Figure 28

General Appearance of Power Adapter (Front View)



Figure 29

General Appearance of Power Adapter (Rear View)



Figure 30

Cover Removed, Internal View of Power Adapter



Figure 31

Metal Cover Removed, PCB (Component Side)



Figure 32

PCB (Foil Side)

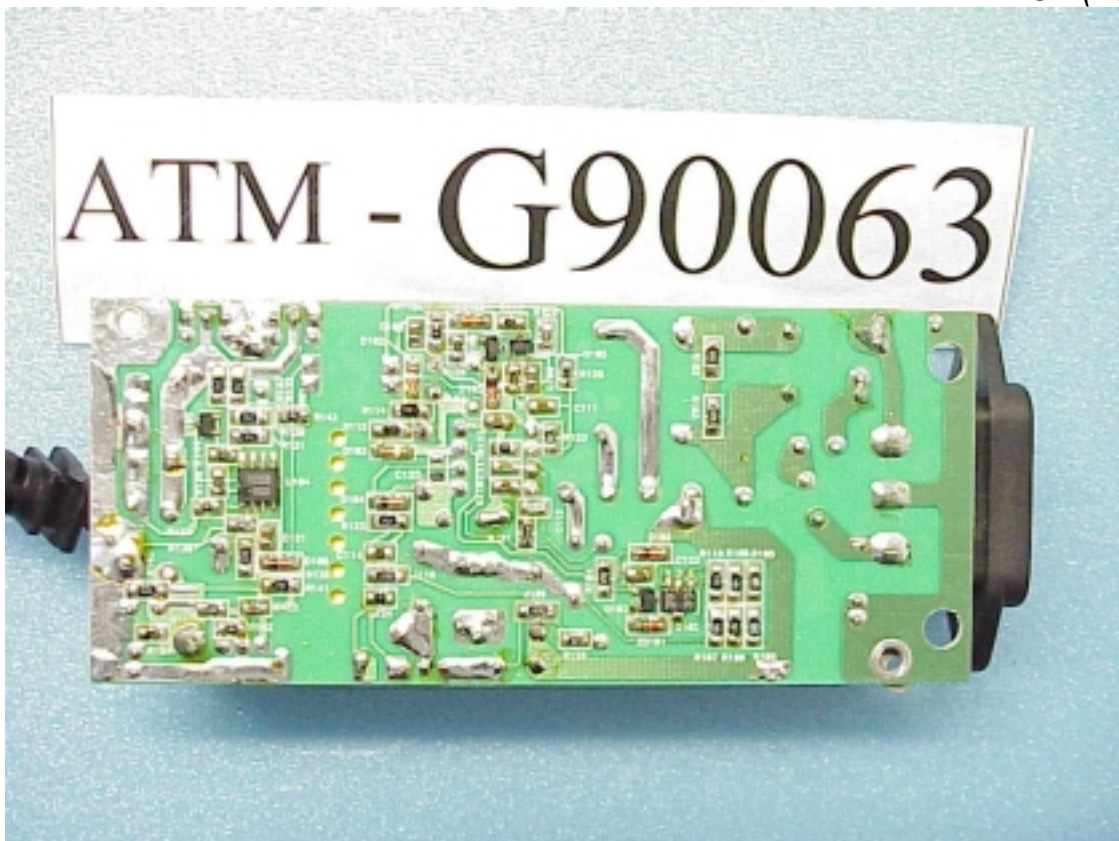


EXHIBIT 3

EUT and Simulators Configuration

Block Diagram

EUT AND SIMULATORS CONFIGURATION

Description of EUT

Applicant : Top Victory Electronics (Taiwan) Co., Ltd.
18F, 738 Chung-Cheng Rd., Chung-Ho 235,
Taipei Hsien, Taiwan, R.O.C.

Manufacturer # 1 : Top Victory Electronics (Fujian) Co., Ltd
Yuan Hong Road, Shang-Lu Fuqing City, Fujian,
China.

Manufacturer # 2 : Beijing Orient Top Victory Electronics Co., Ltd.
No. 10 Jiu Xian Qiao Rd., Chao Yang District,
Beijing, China.

Product Name : 17" LCD Color Monitor

Model Number : LM-700

FCC ID : ARSTF1760

LCD Panel : #1 Chi Mei, M/N M170E1
#2 Chi Mei, M/N M170E1
#3 Unipac, M/N UN170E01

(The #1 & #2 LCD Panel have the same model
number, the difference is PCB layout different.

Power Adapter : Chi, M/N CH-1205
I/P: 100-240Vac, 47-63Hz, 1.5A (Max.)
O/P: DC 12V, 5A, 60W
Cable: Shielded, Undetachable, 0.7m
Bonded a ferrite core
FCC ID by FCC DoC

Data Cable : Shielded, Undetachable, 1.5m
Bonded a ferrite core

Power Cord : Non-Shielded, Detachable, 1.8m

Horizontal Freq. : 30kHz to 80kHz

Vertical Freq. : 55Hz to 75Hz

Resolution (Max.) : 1280*1024, Non-Interlaced

TTEMC Report No. : TTEMC-F01016

Date of Test : Jan. 31, ~ Mar. 05, 2001