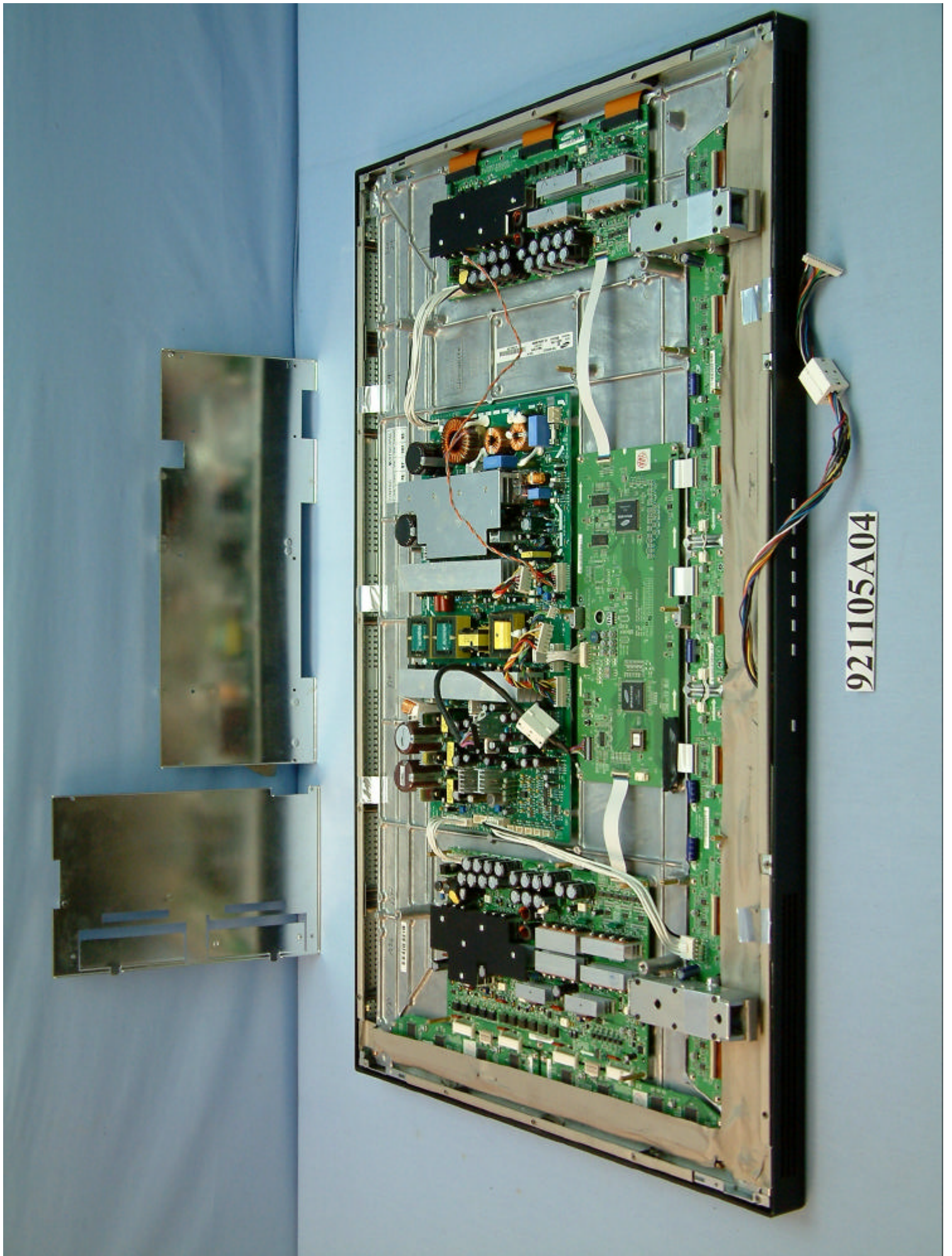


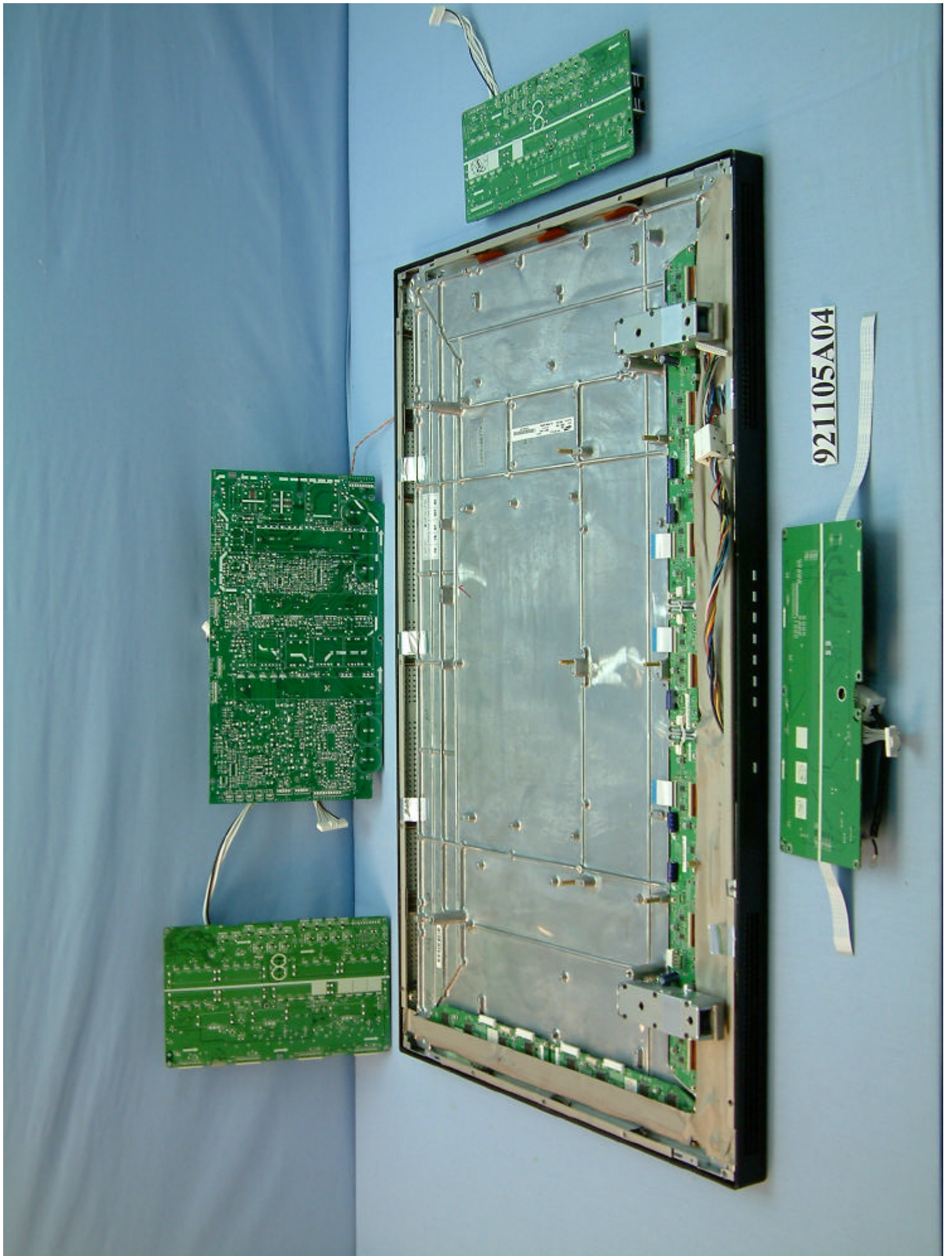
(Photo 17)



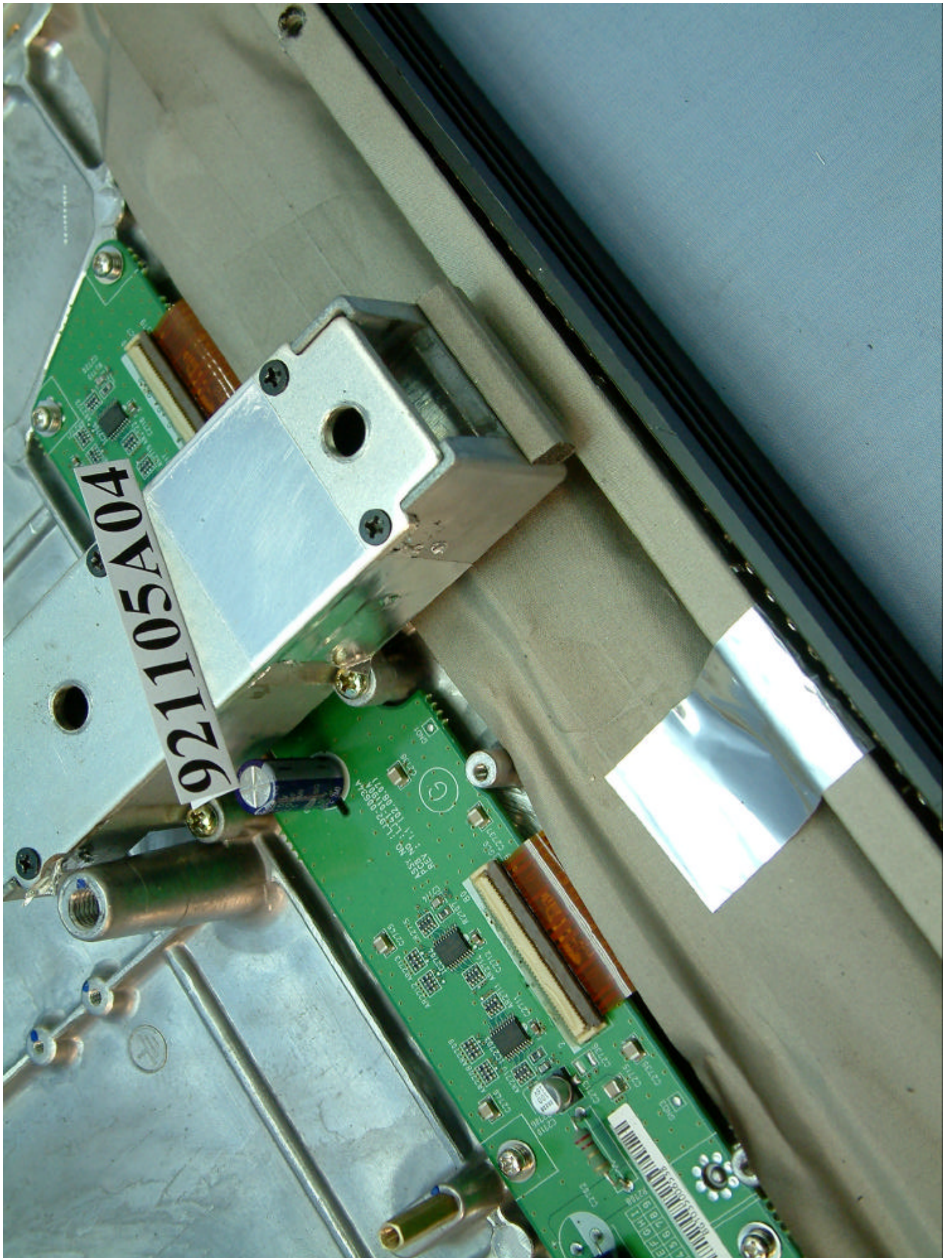
(Photo 18)



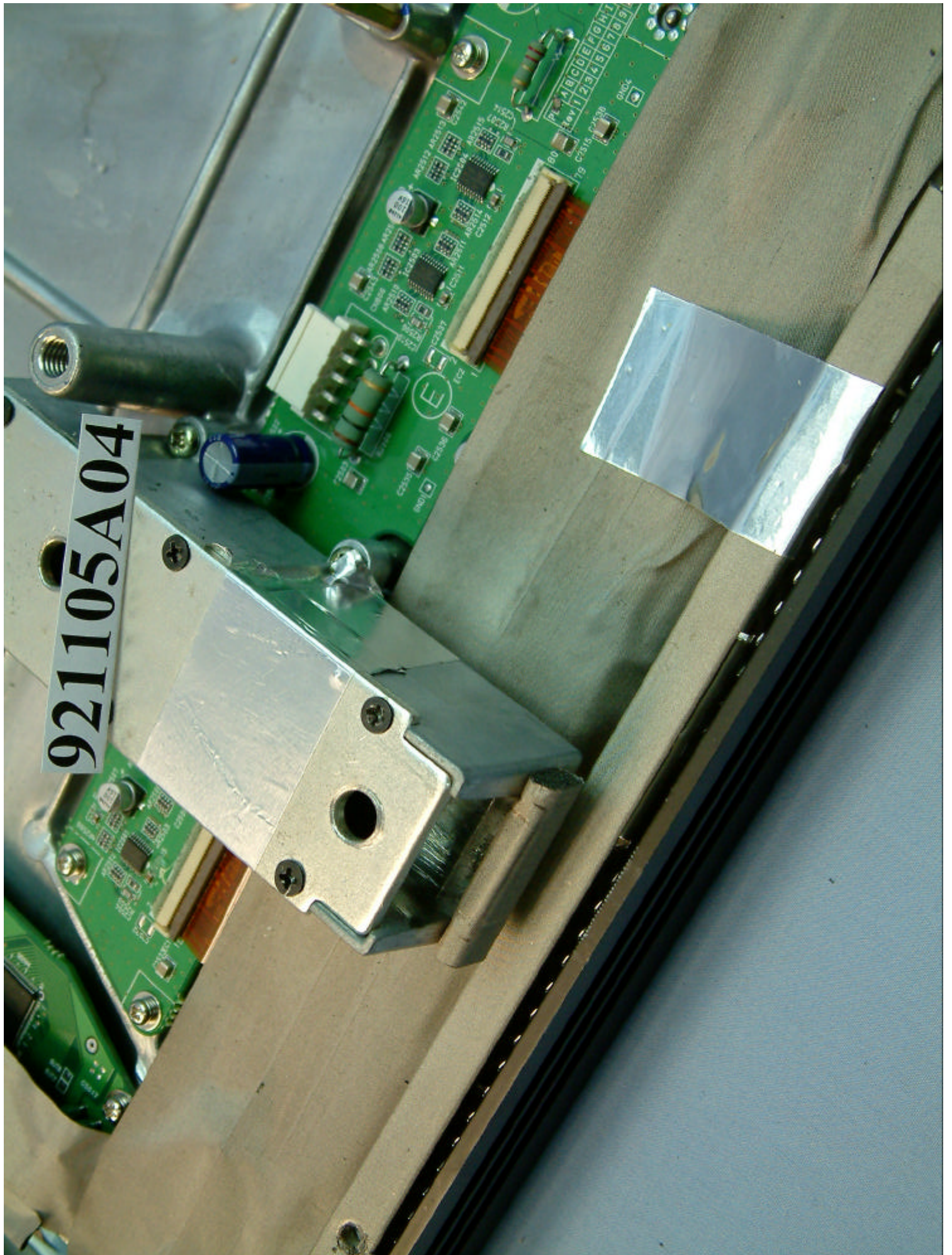
(Photo 19)



(Photo 20)



(Photo 21)



921105A04



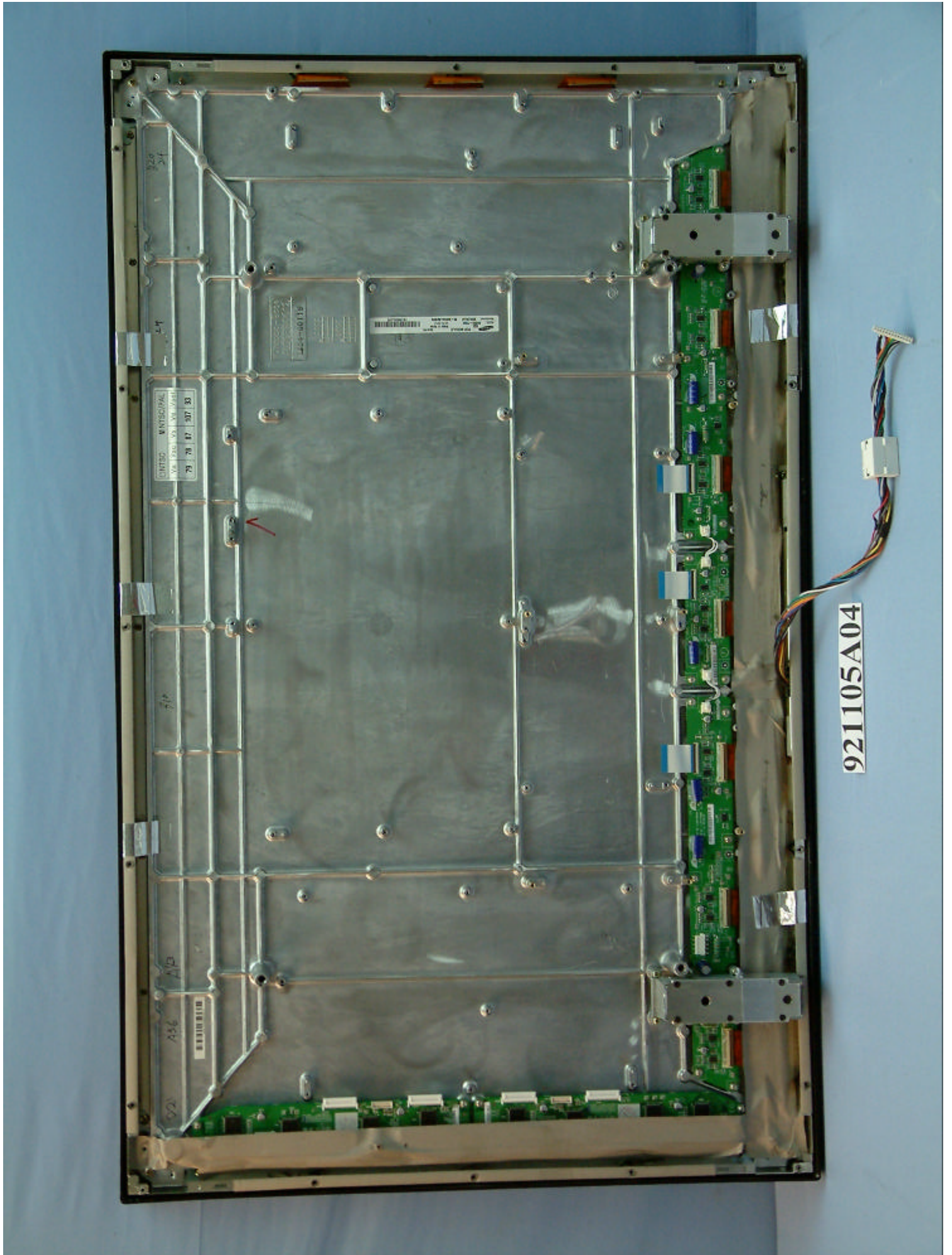
| □NTSC |     | □NTSC/PAL |     |      |
|-------|-----|-----------|-----|------|
| Va    | Vsc | Vs        | Ve  | Vsol |
| 79    | 78  | 87        | 107 | 93   |

921105A04

29

810





(Photo 24)





(Photo 25)