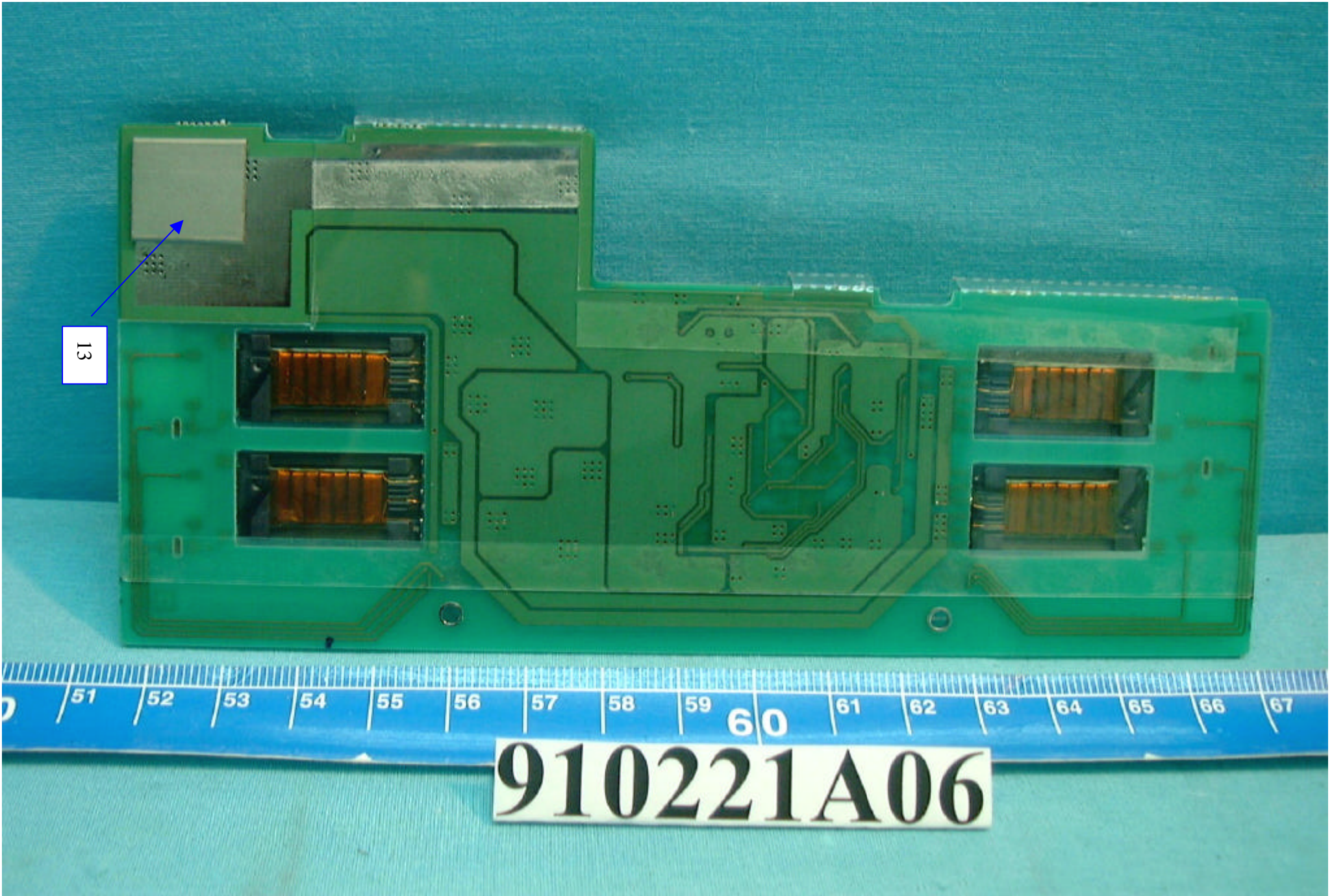


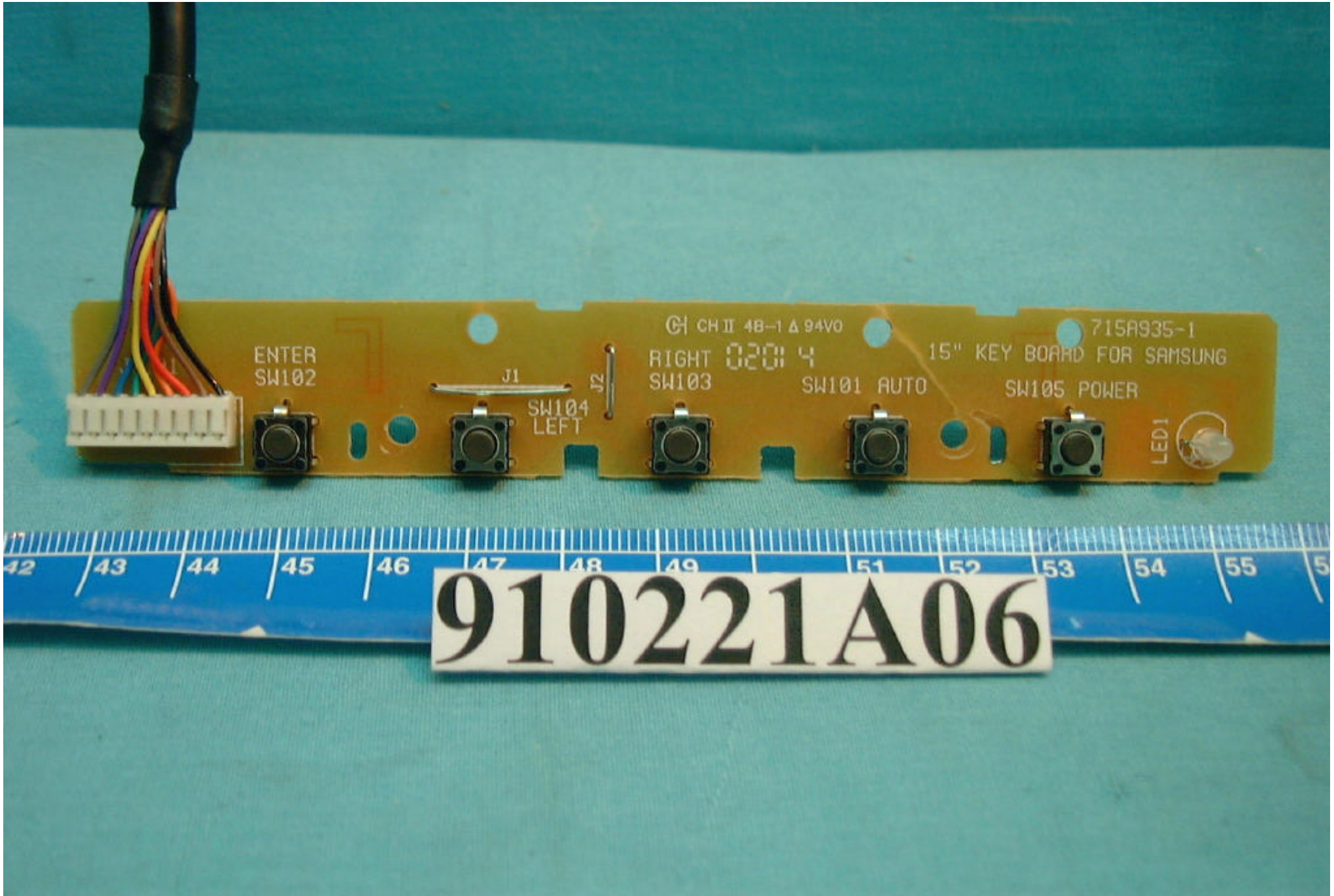
(Photo 32)

FCC ID: ARSLM561S

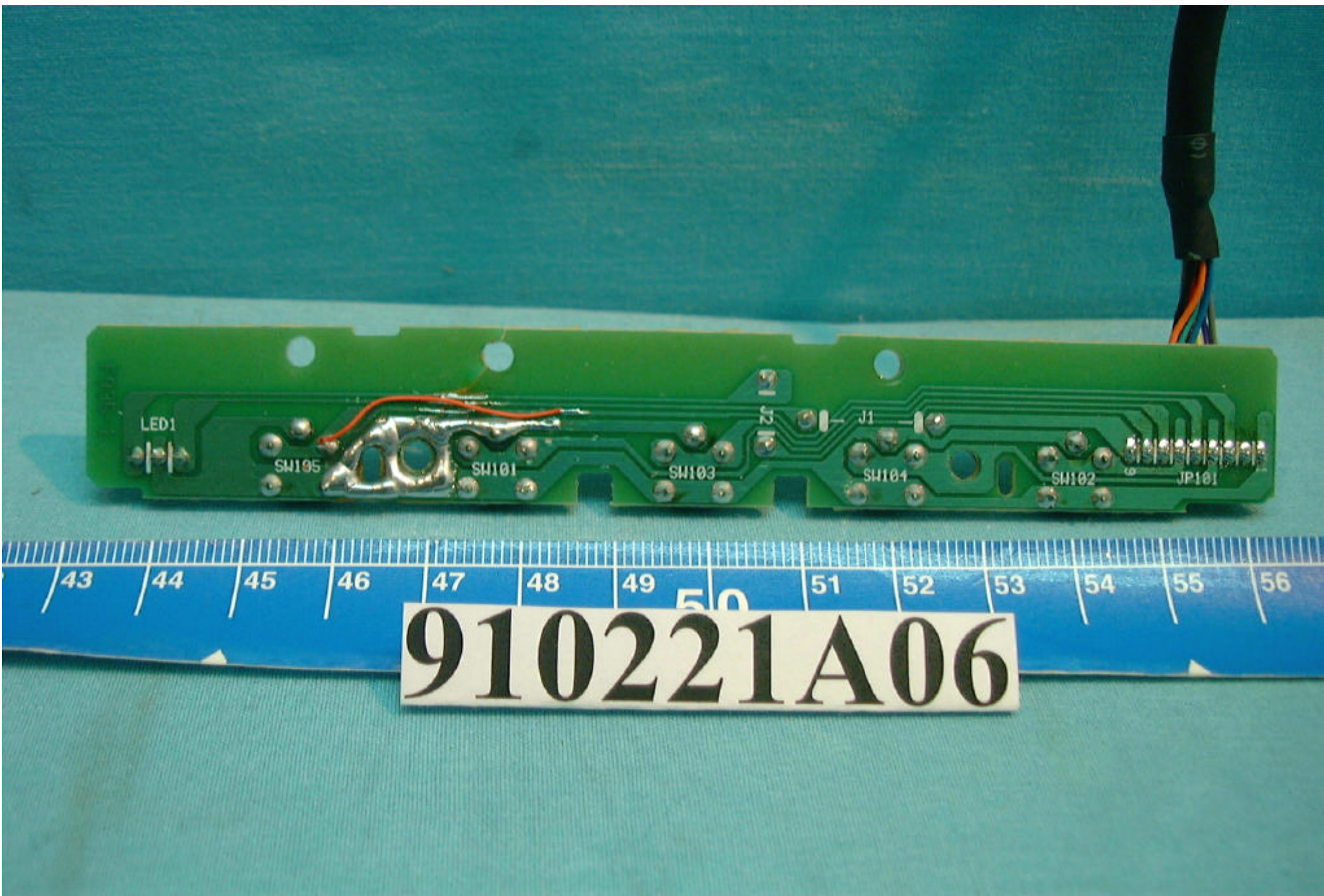


13

910221A06

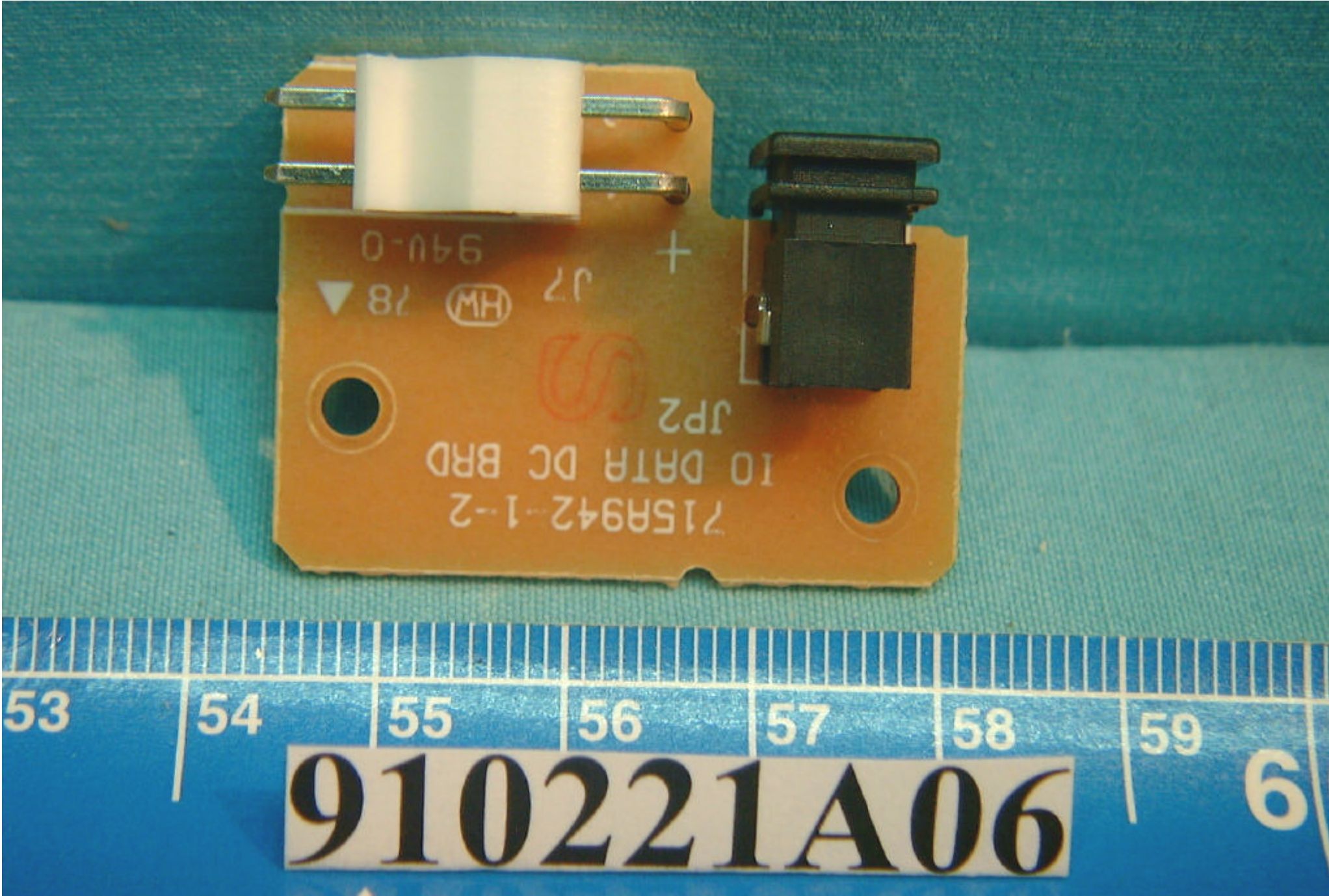


(Photo 34)



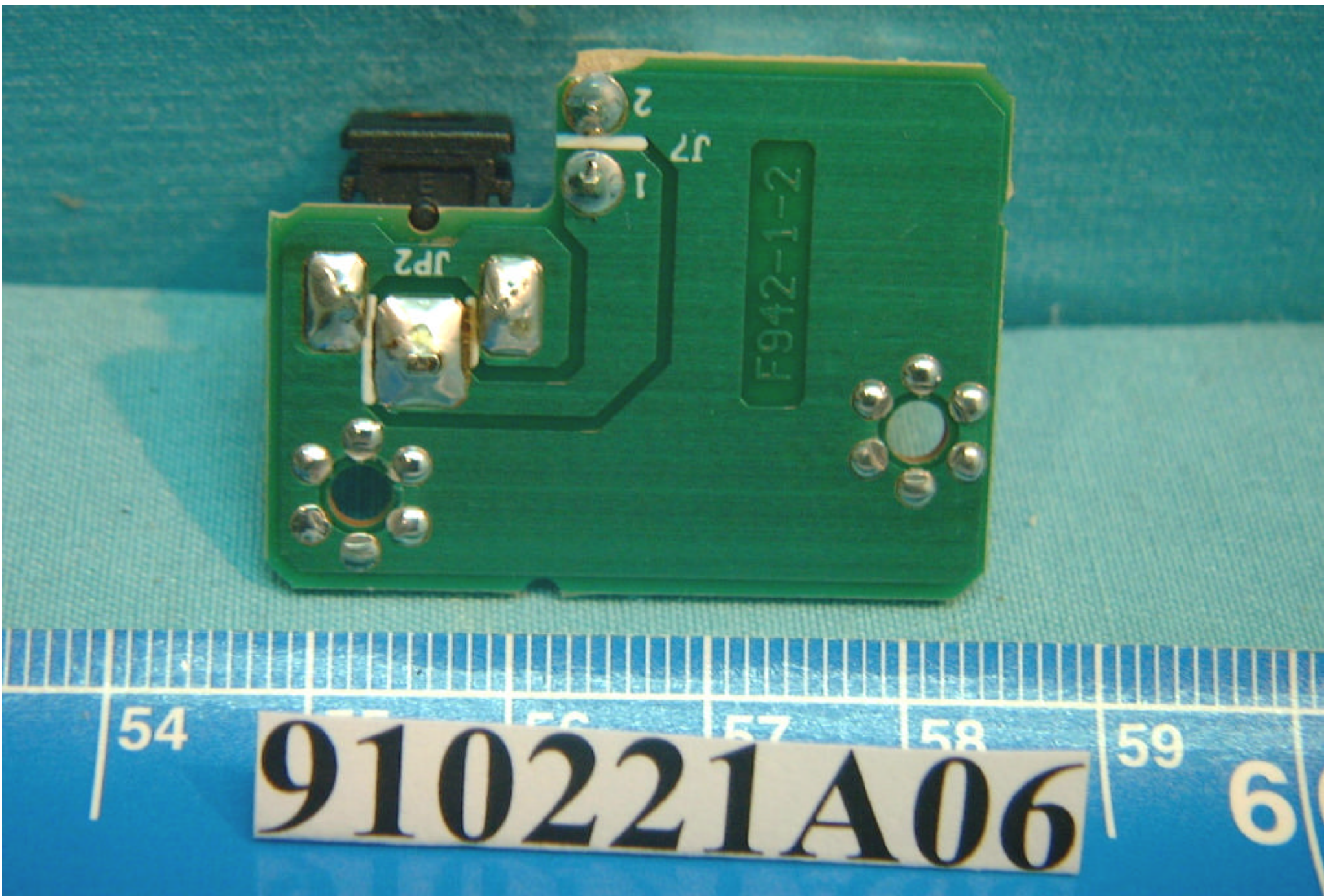
(Photo 35)

FCC ID: ARSLM561S



715R942-1-2
IO DATA DC BRD
JP2
JM
94U-0 +
87 (MH) 2P
▼

910221A06



(Photo 37)

FCC ID: ARSLM561S



(Photo 38)

FCC ID: ARSLM561S

(Photo 39)

FCC ID: ARSLM561S

