

(Photo 3)

FCC ID: ARSLM1780



(Photo 4)



Model: 920716A05
FCC ID: ARSLM1780
This device complies with Part 15 of the FCC Rules.
Operation is subject to the following two conditions:
1. This device must not cause harmful interference.
2. This device must accept any interference that may be received, including interference from authorized radio transmitters.

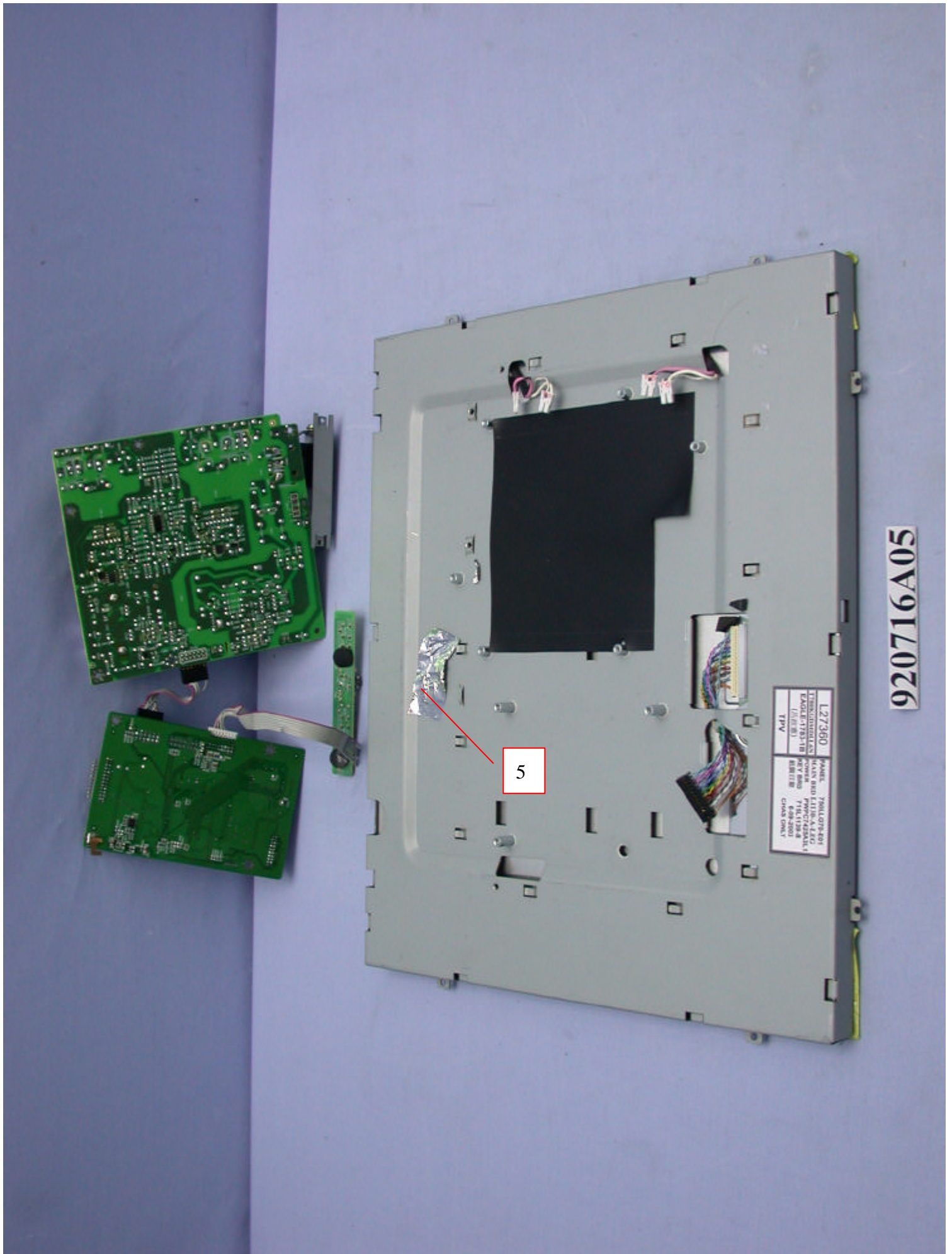
920716A05



(Photo 6)



(Photo 7)



(Photo 8)



(Photo 9)

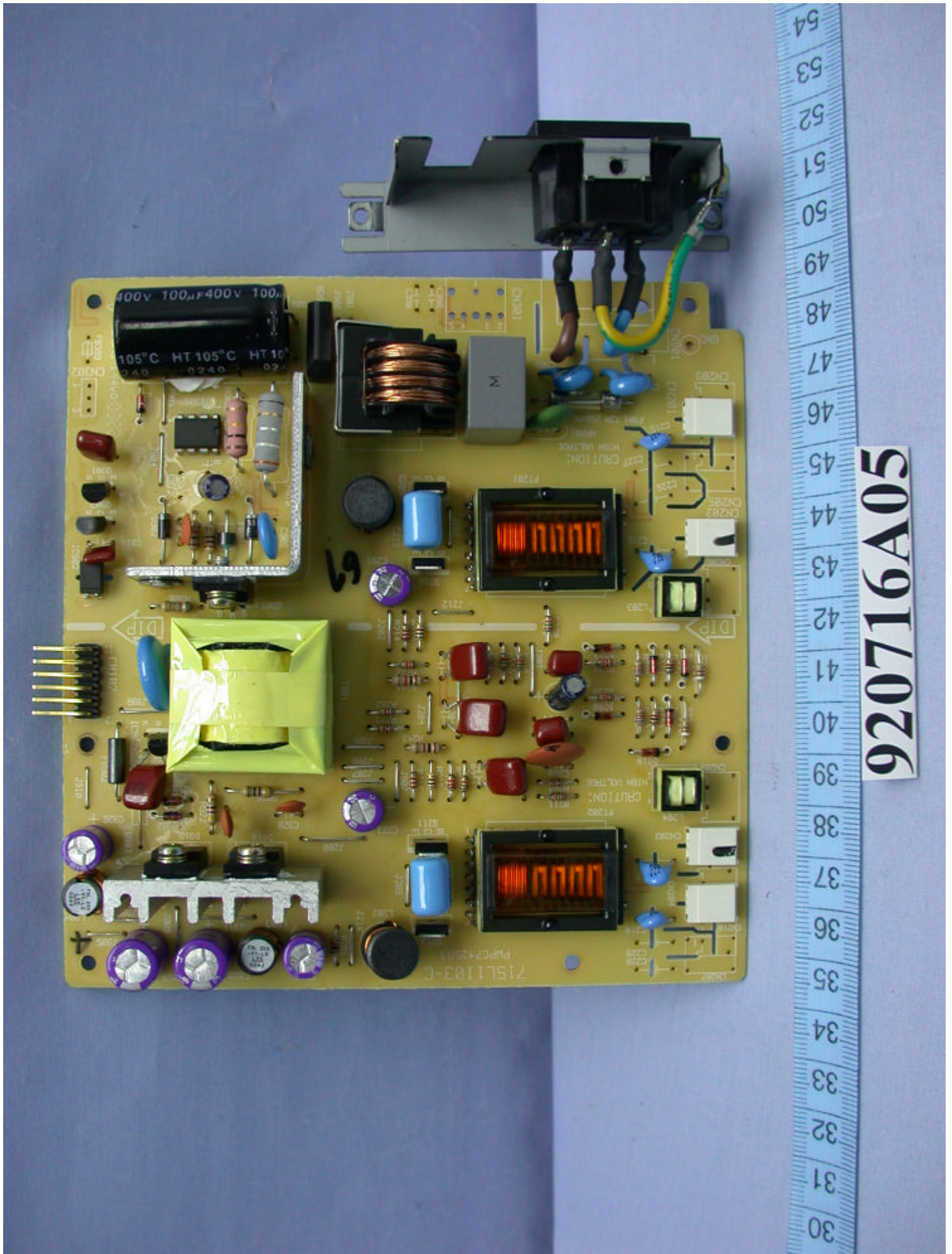


(Photo 10)

FCC ID: ARSLM1780

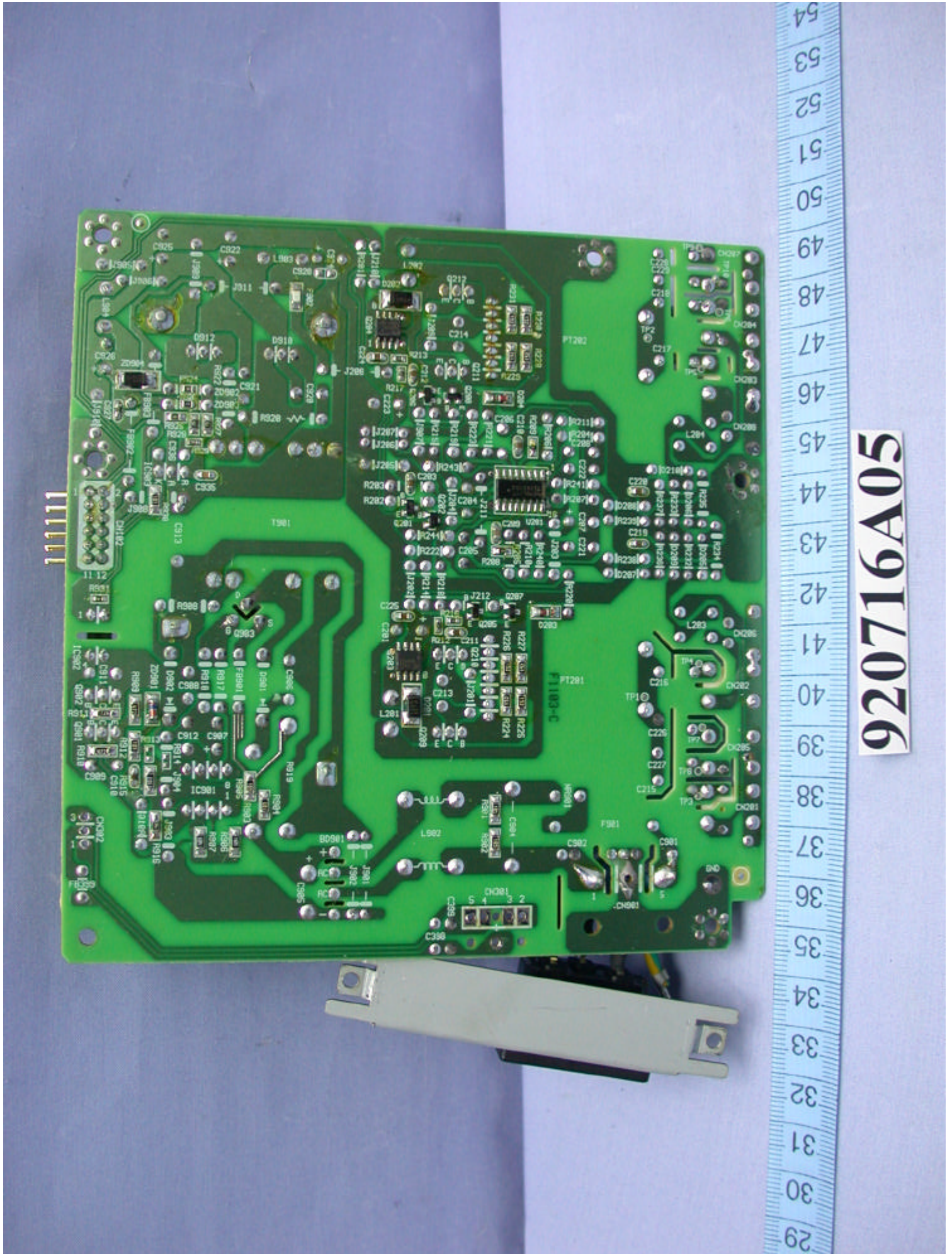


920716A05



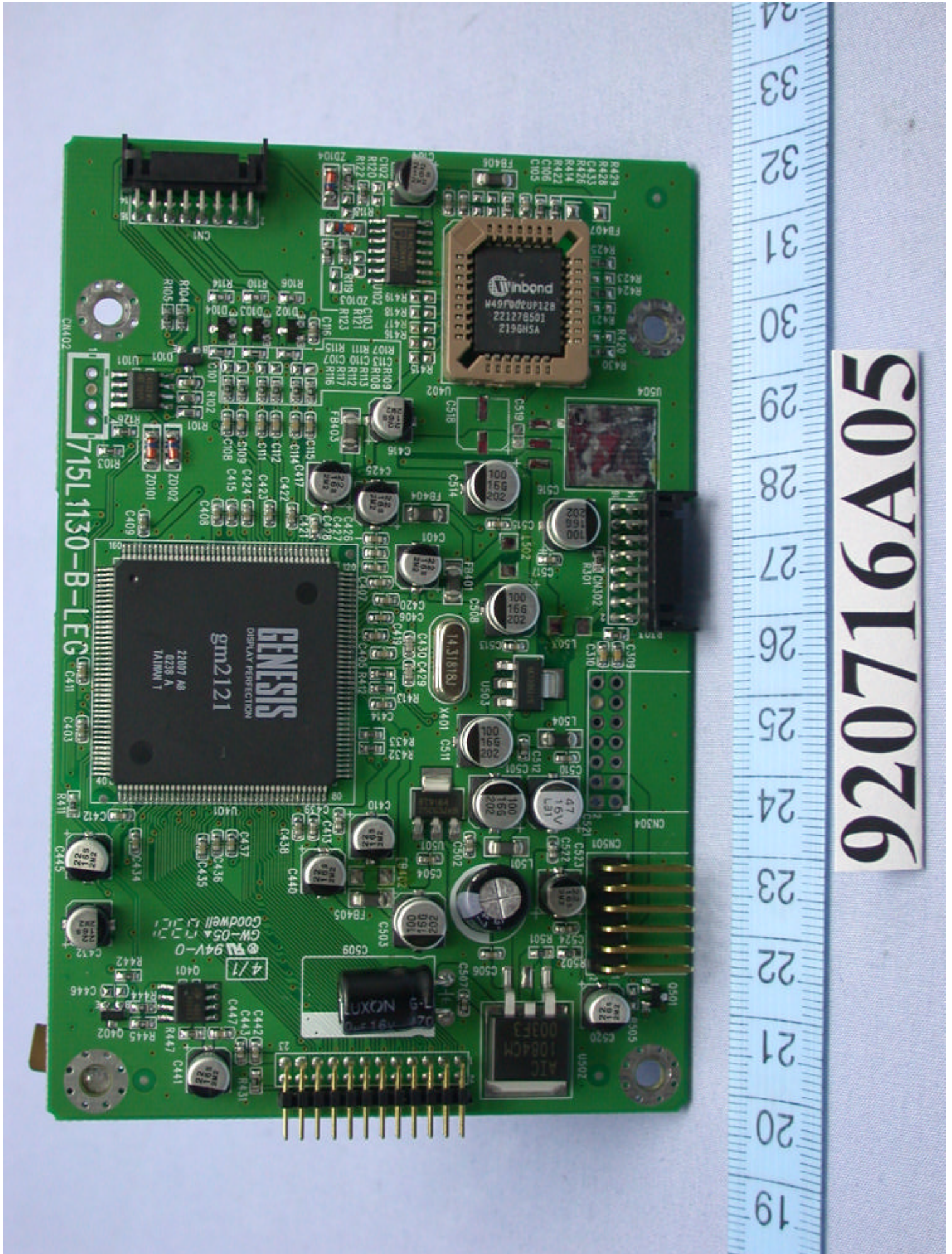
920716A05

(Photo 12)



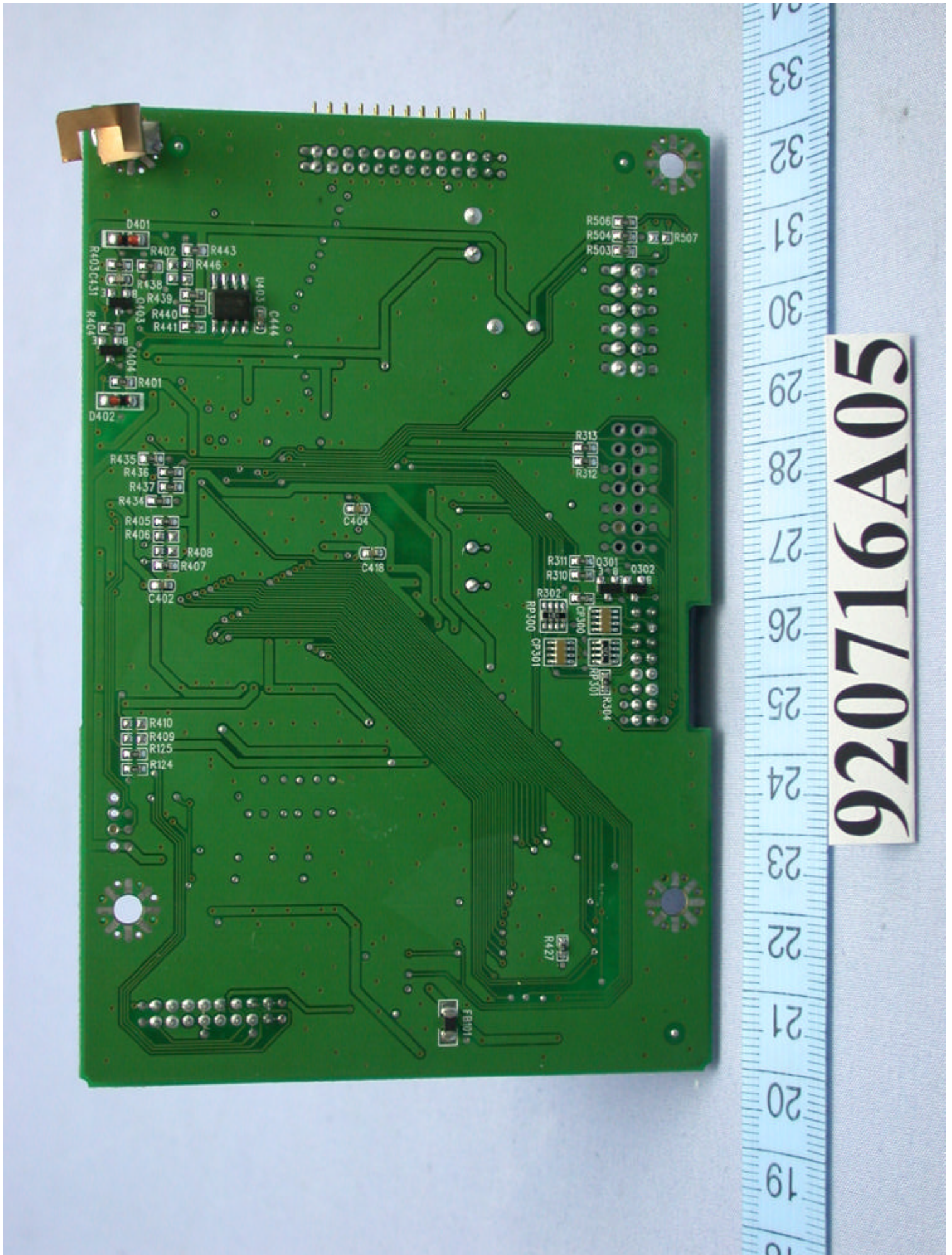
920716A05

(Photo 13)



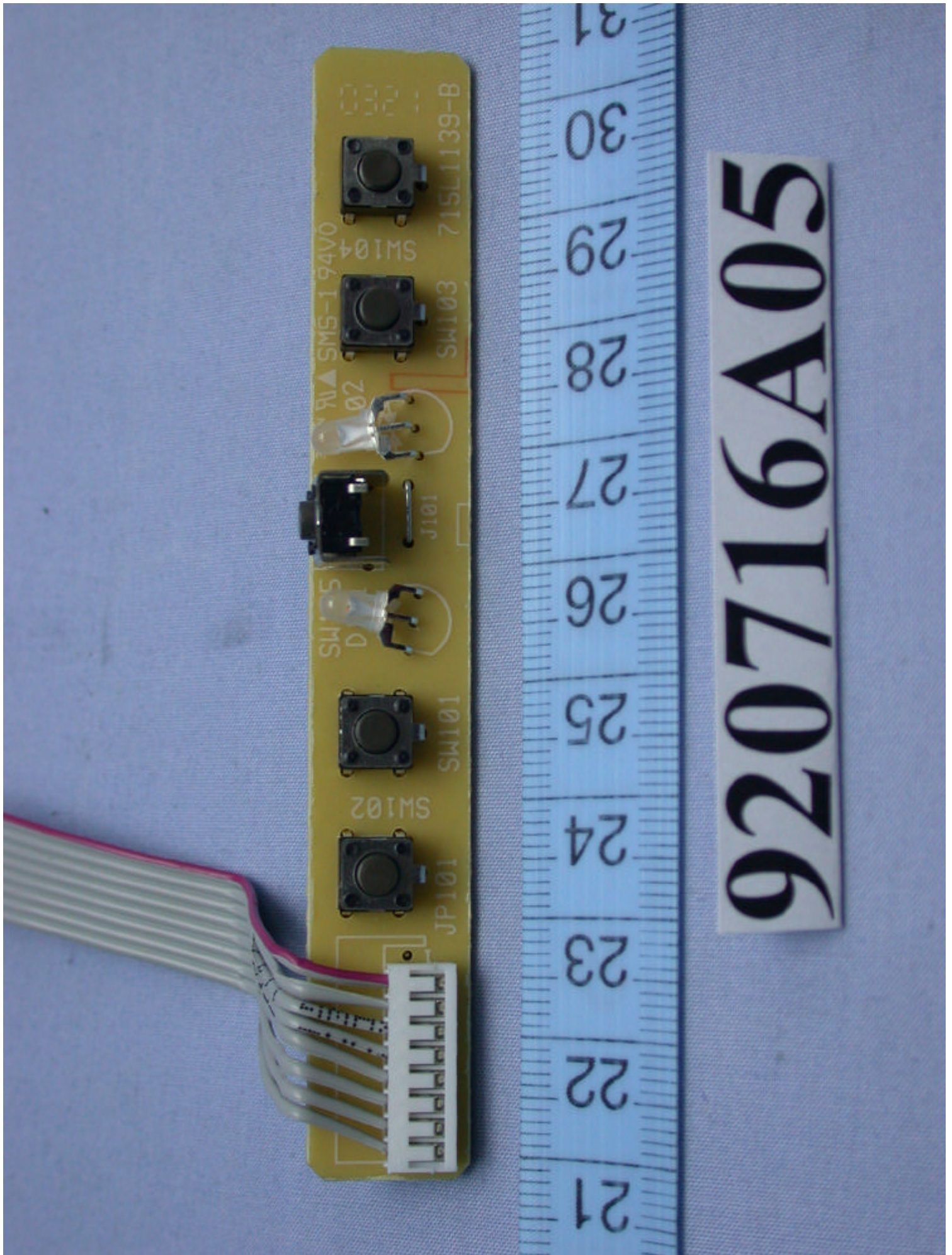
920716A05

(Photo 14)

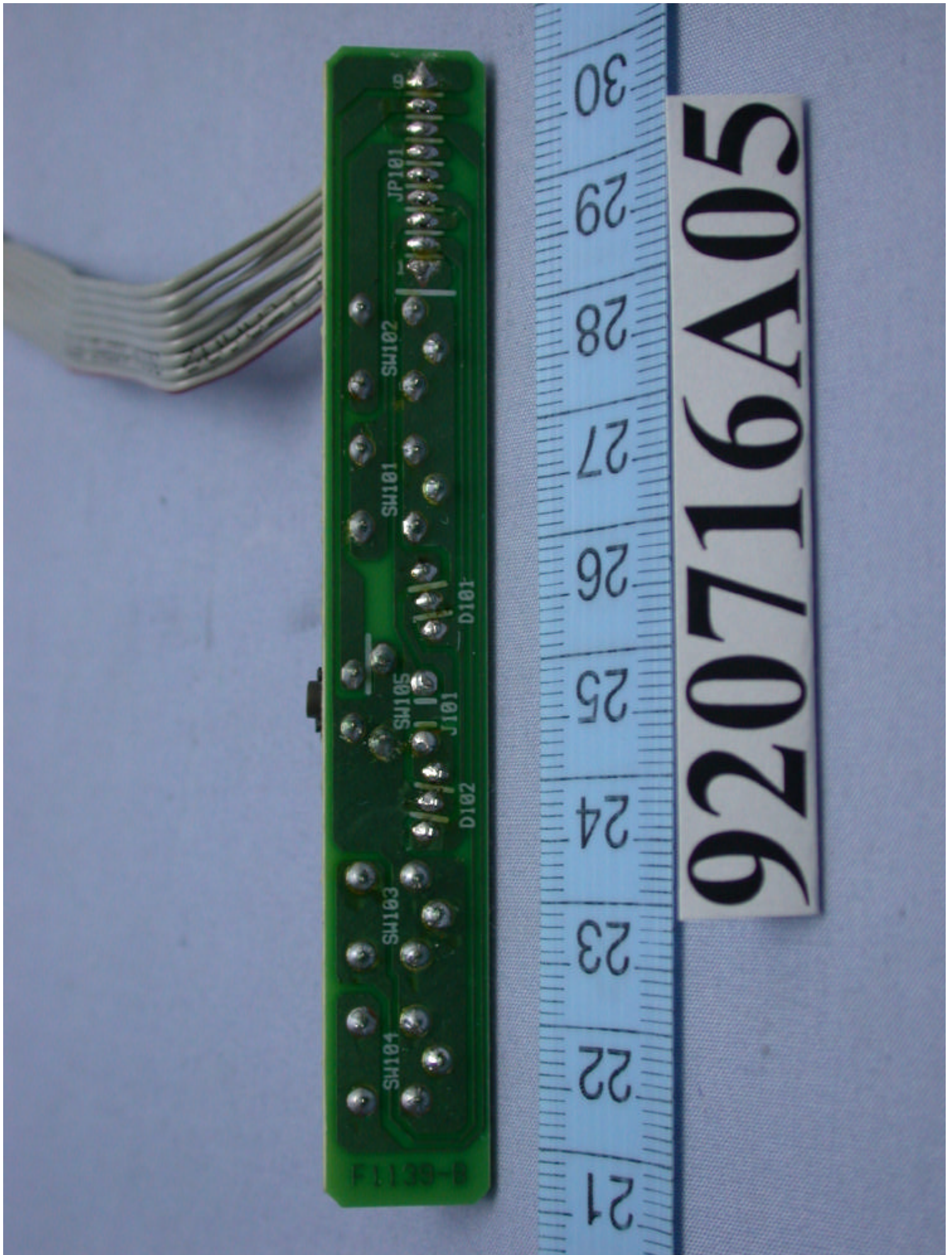


920716A05

(Photo 15)



(Photo 16)



(Photo 17)