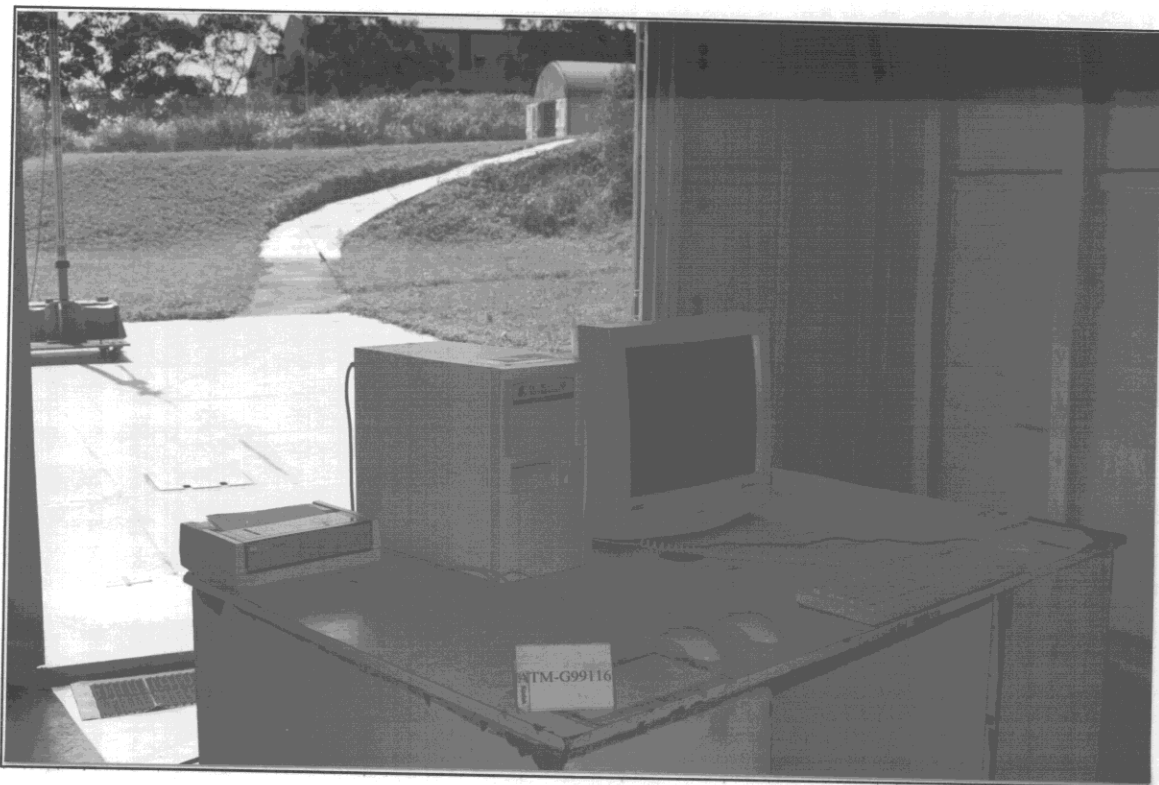


Test Mode: 95KHz/1600\*1200, 75Hz

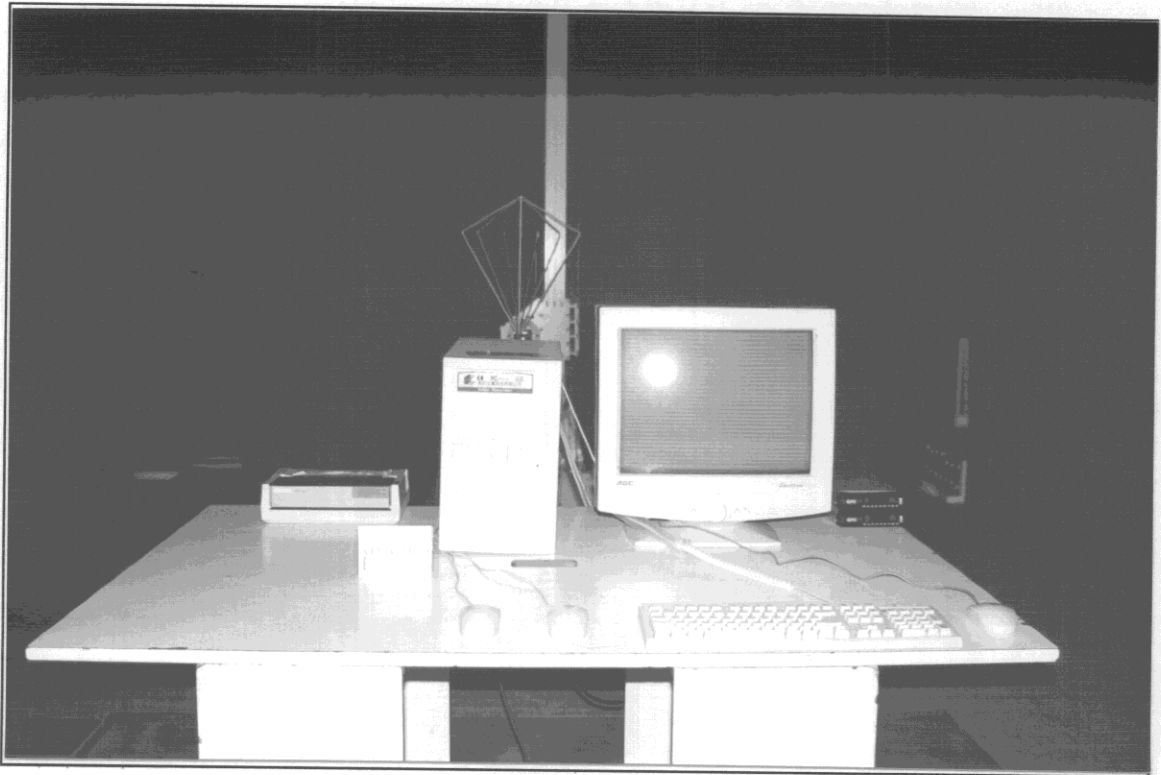


SETUP WITH MAXIMUM DETECTED EMISSION AT HORIZONTAL POLARIZATION

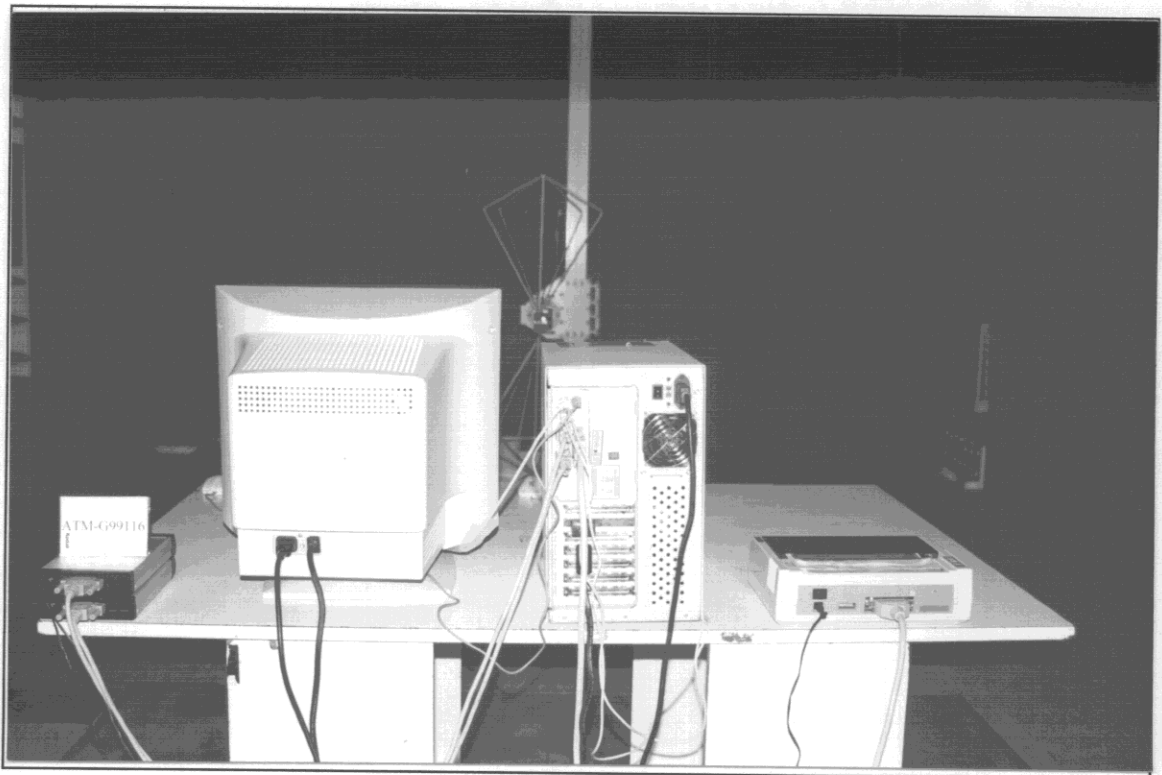


SETUP WITH MAXIMUM DETECTED EMISSION AT VERTICAL POLARIZATION

## 5.2. Photos of Radiated Measurement at Anechoic Chamber



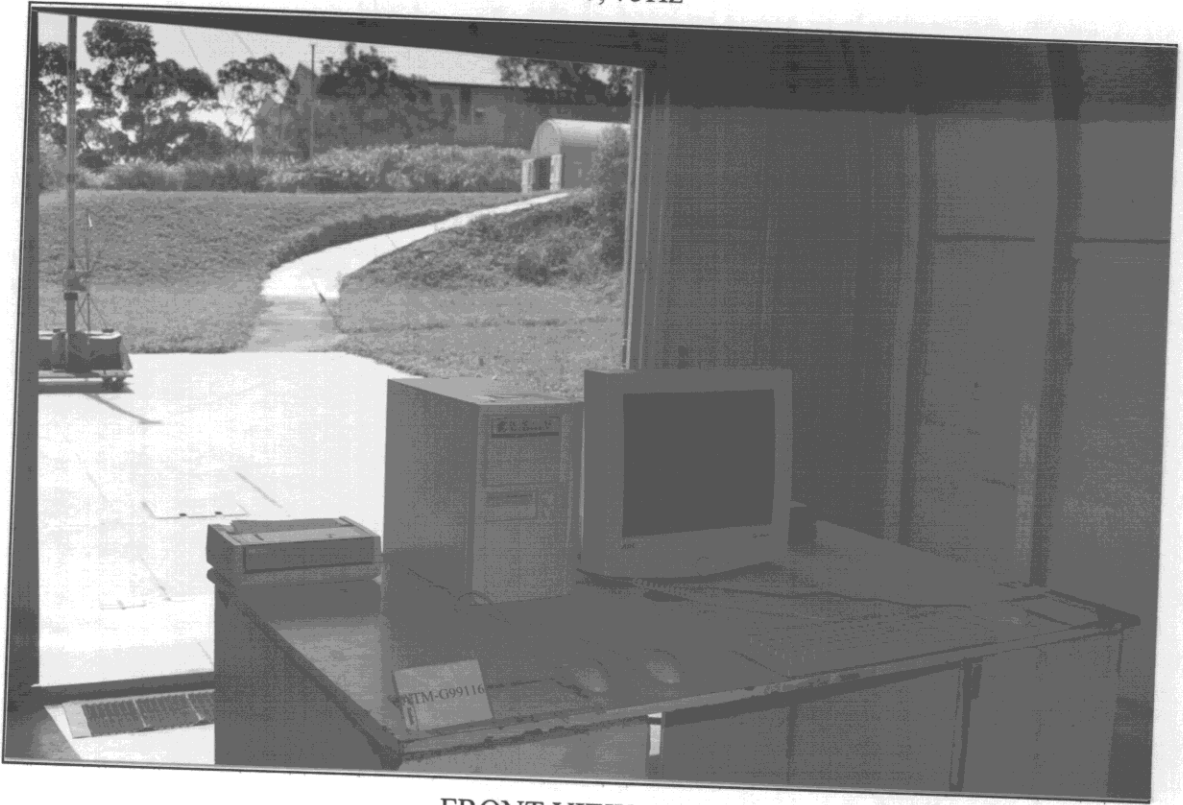
FRONT VIEW OF RADIATED TEST



BACK VIEW OF RADIATED TEST

### 5.3. Photos of Radiated Measurement at Open Field Test Site

Test Mode: 95KHz/1600\*1200, 75Hz



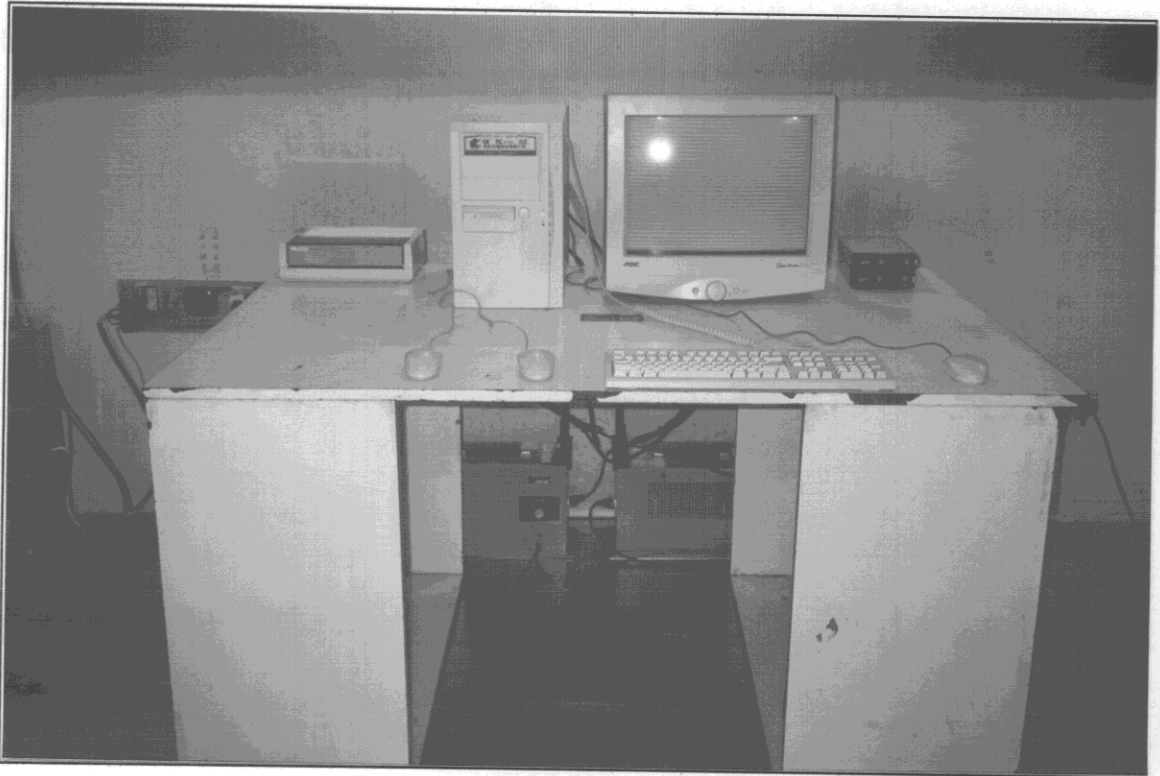
FRONT VIEW OF RADIATED TEST



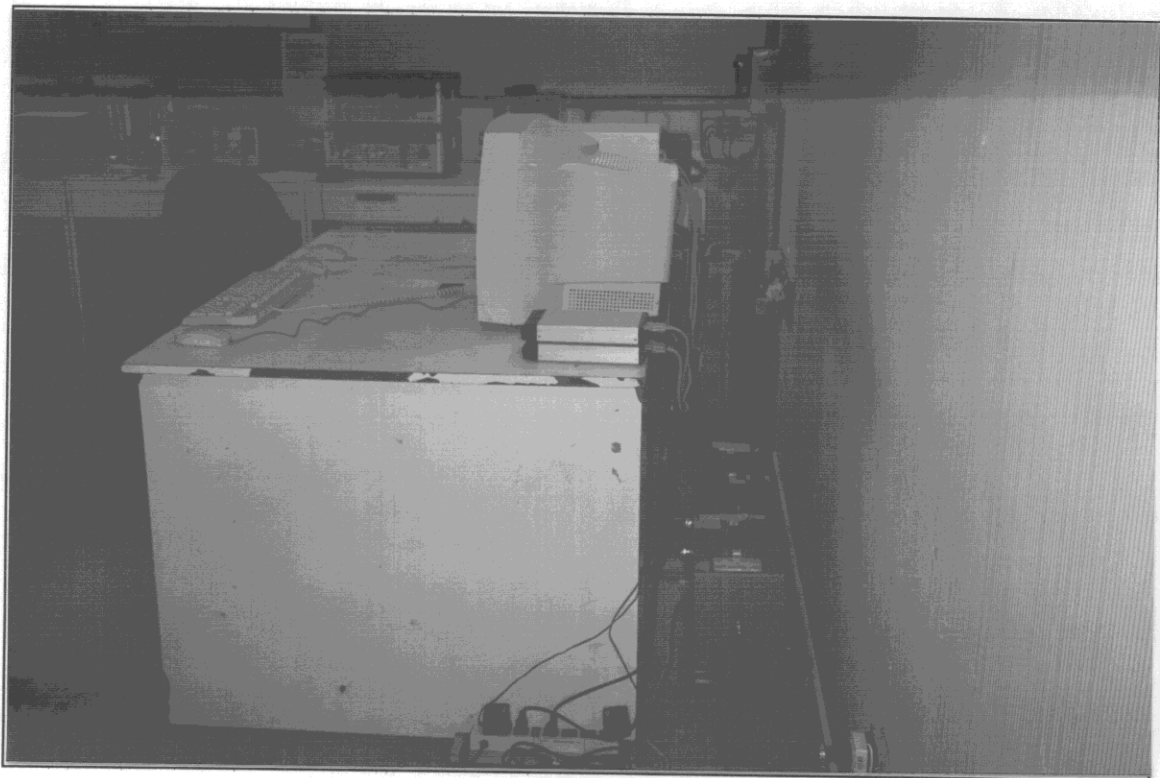
BACK VIEW OF RADIATED TEST

## 5. PHOTOGRAPHS

### 5.1. Photos of Powerline Conducted Measurement



FRONT VIEW OF CONDUCTED TEST



BACK VIEW OF CONDUCTED TEST