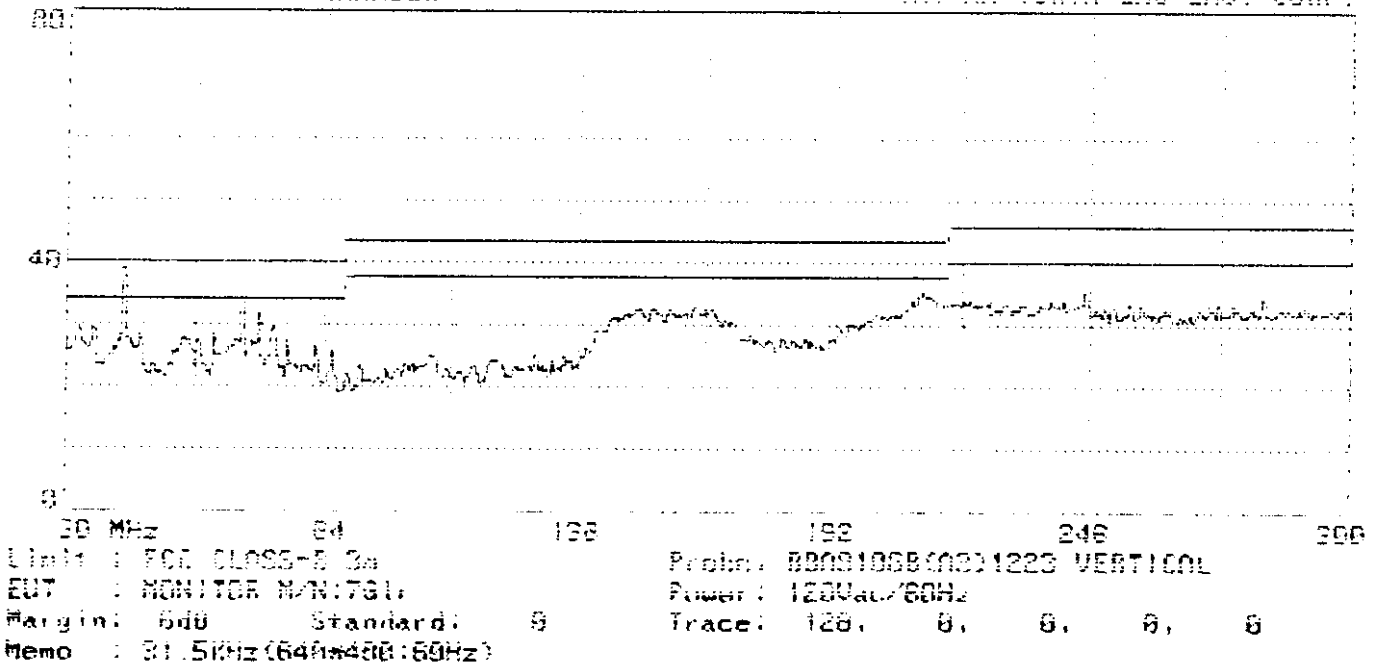
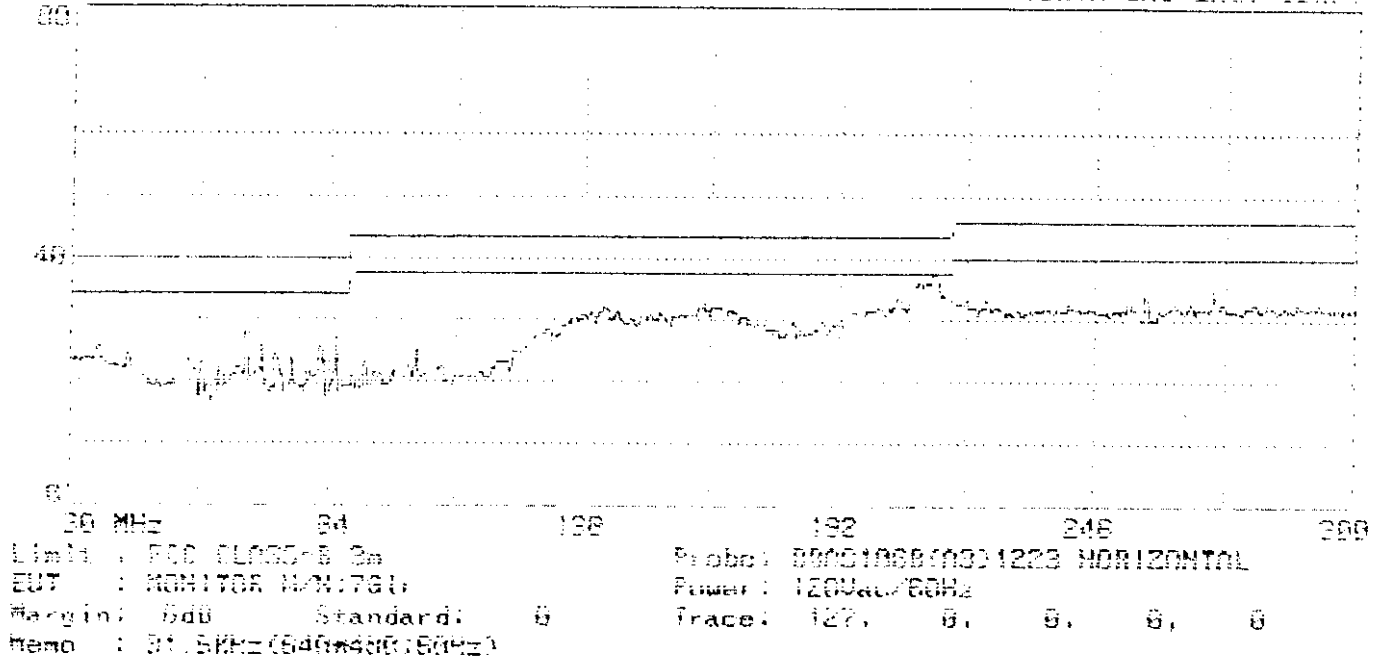
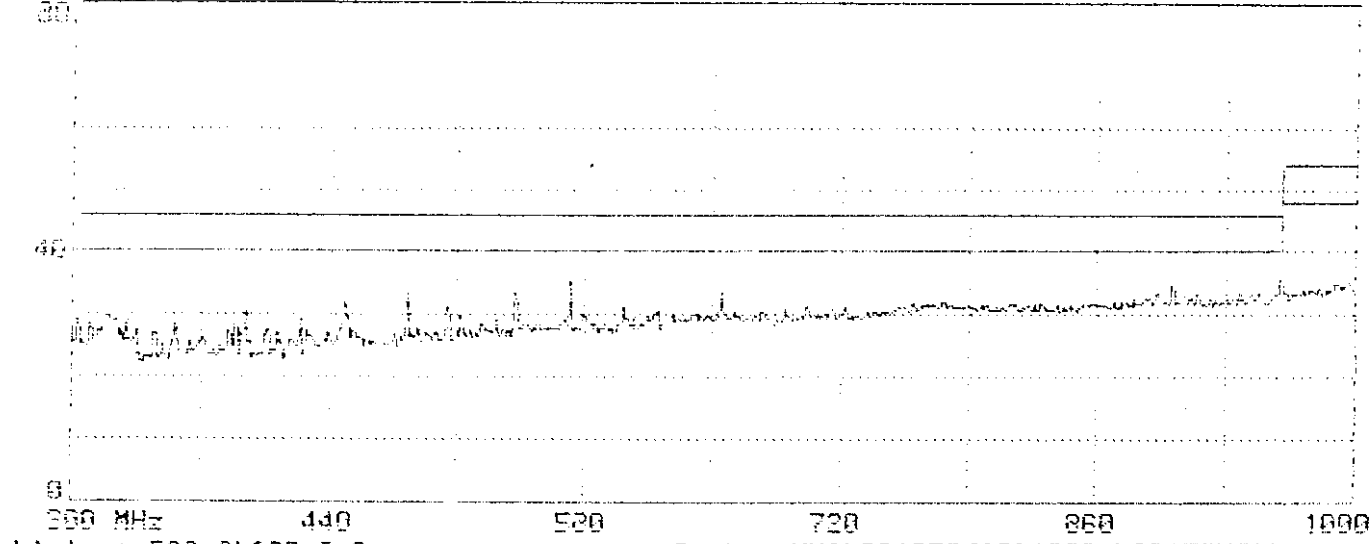


APPENDIX I
(Conducted Test Data)

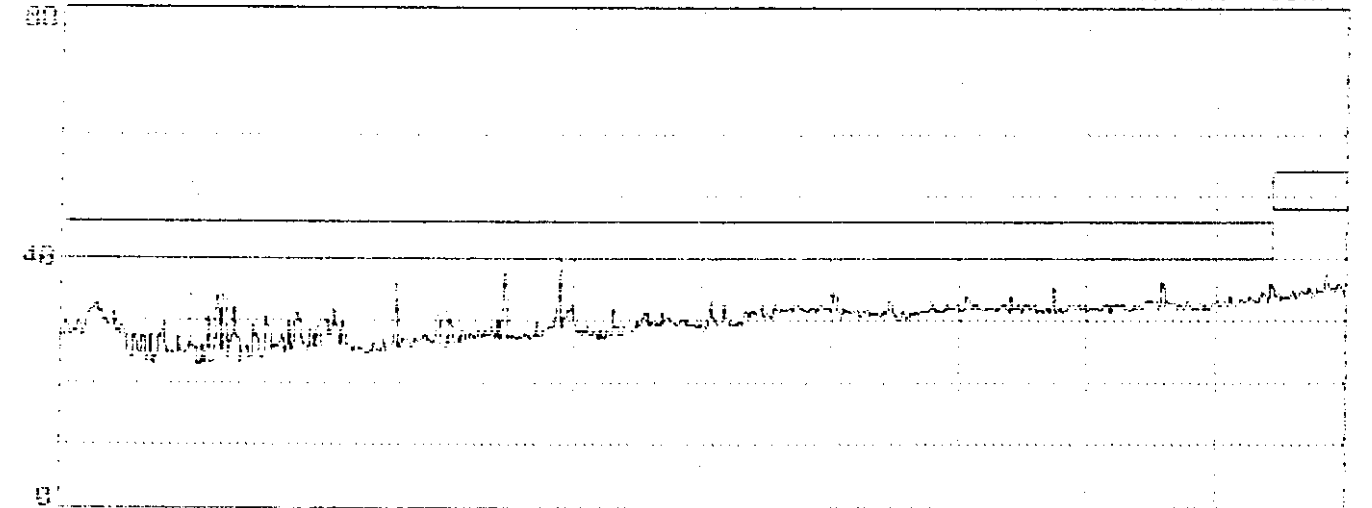
APPENDIX II

(Radiated Test Data
at Anechoic Chamber)

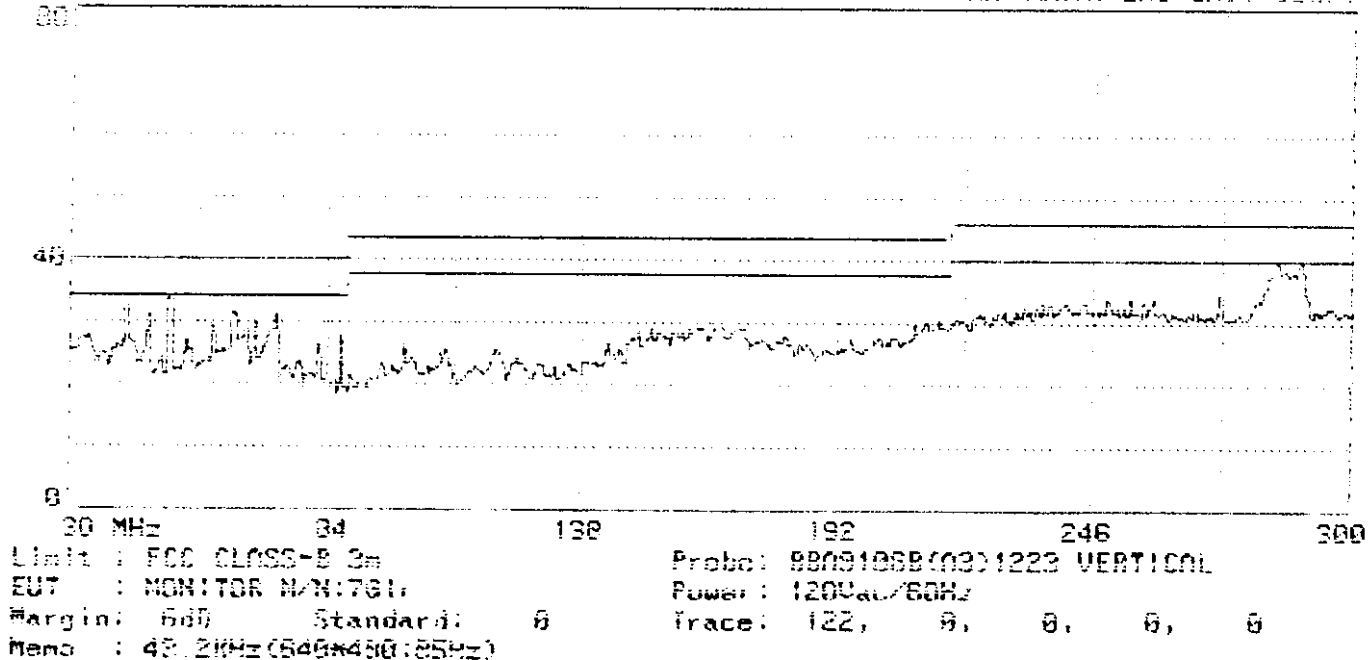
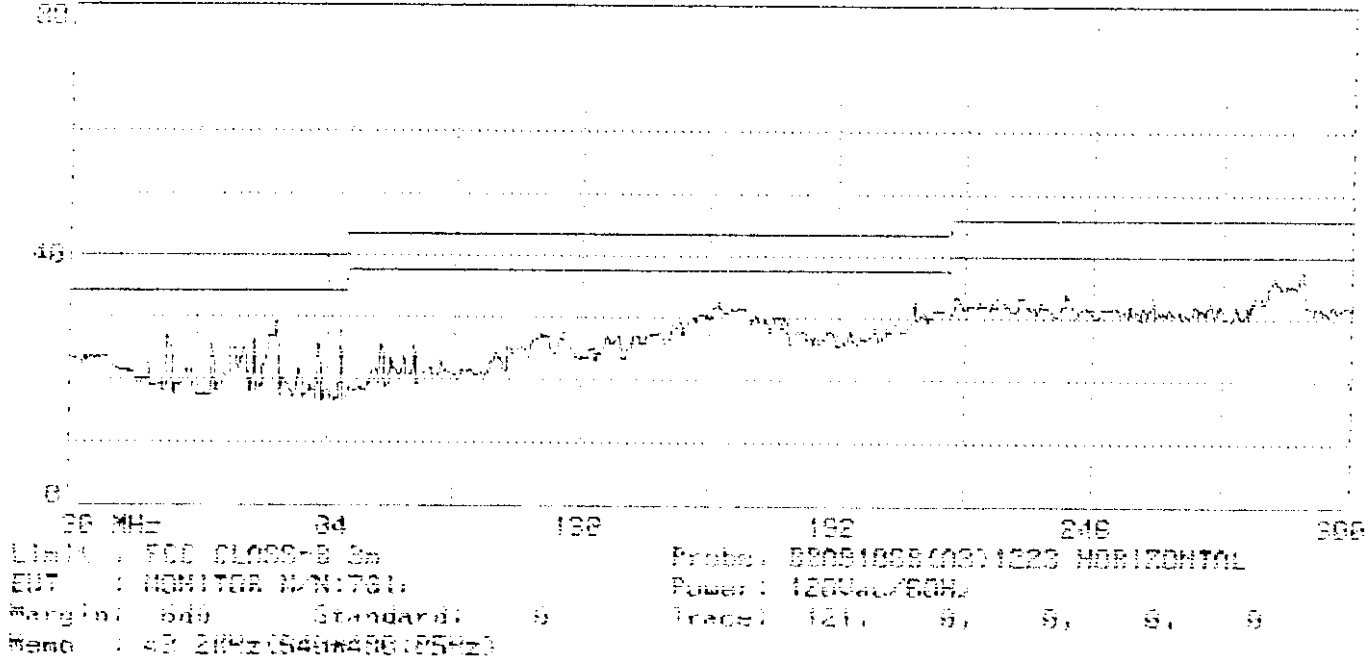


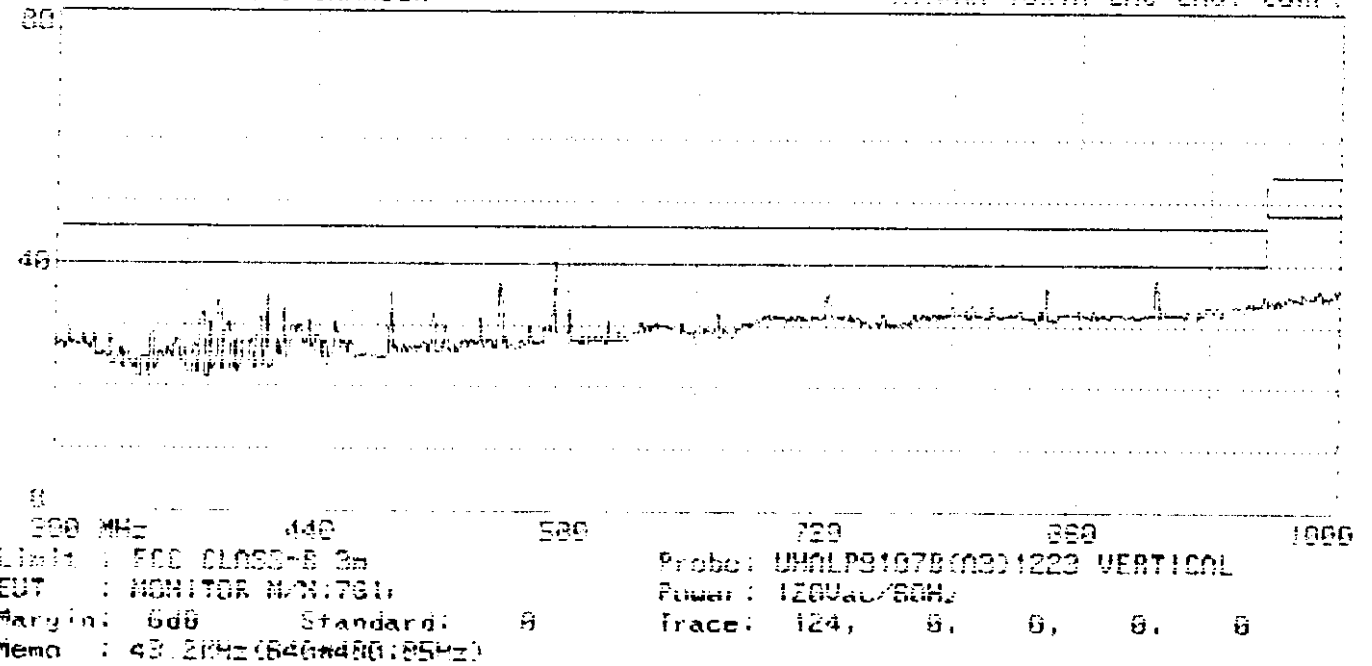
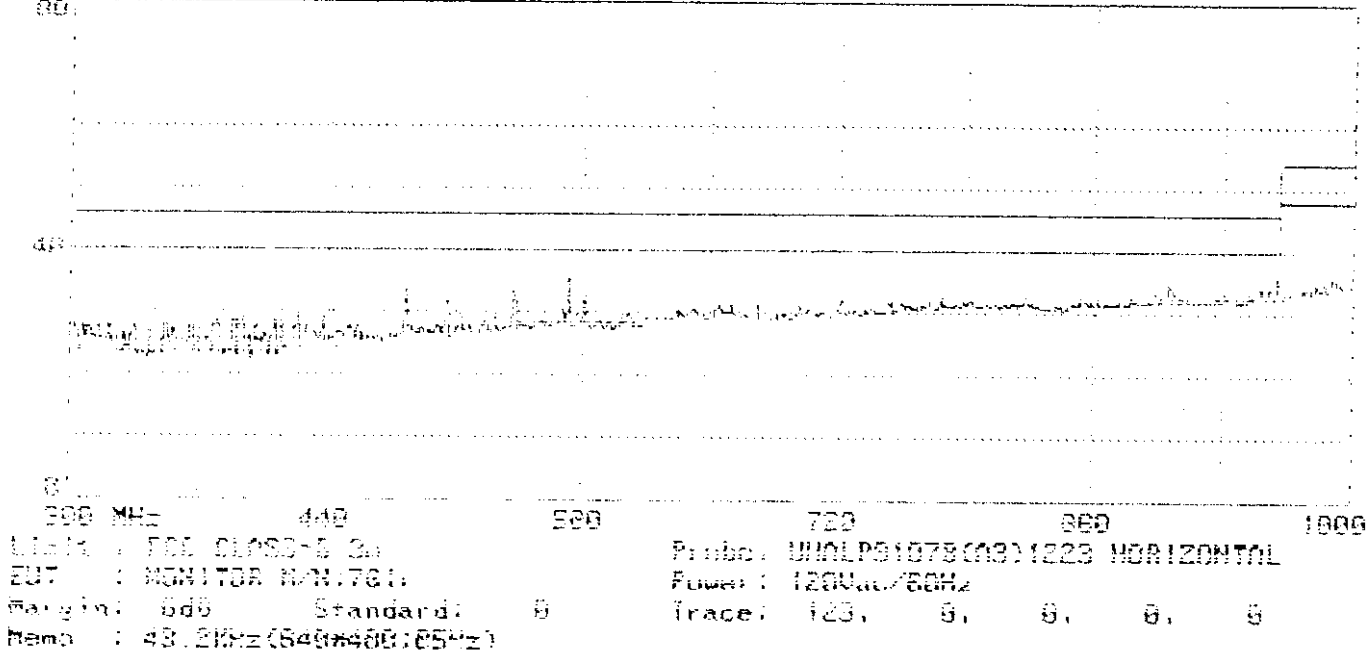


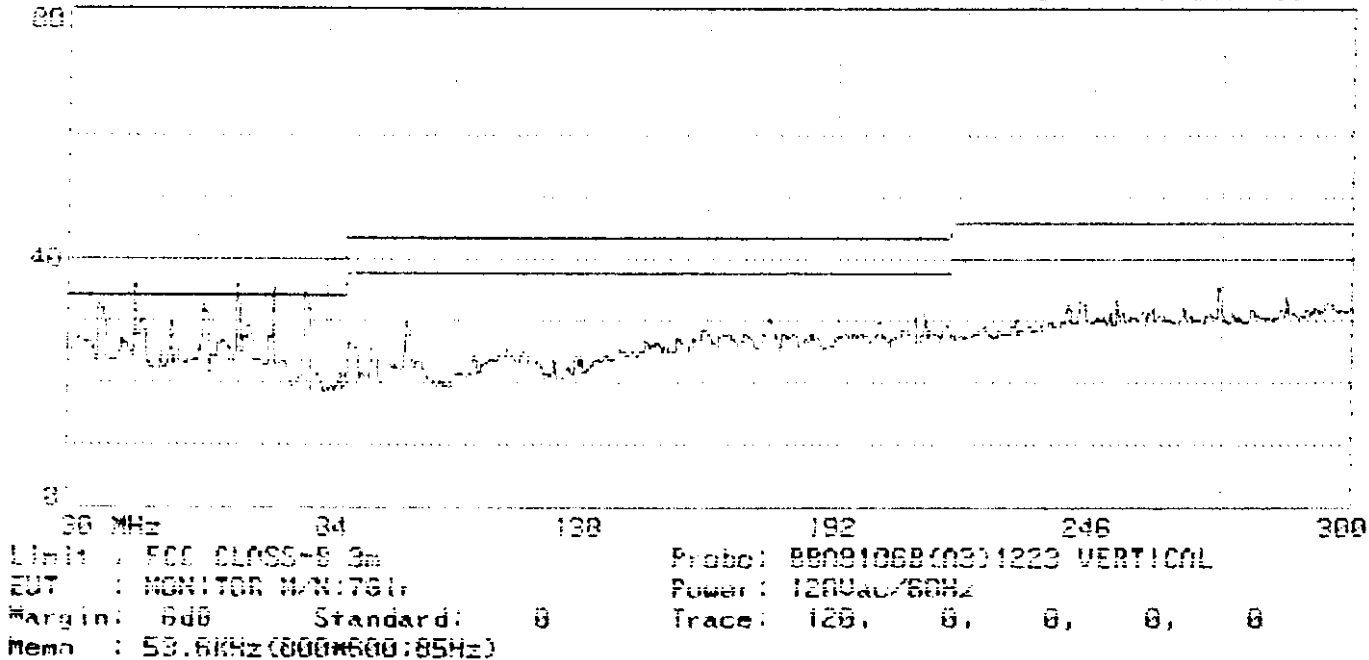
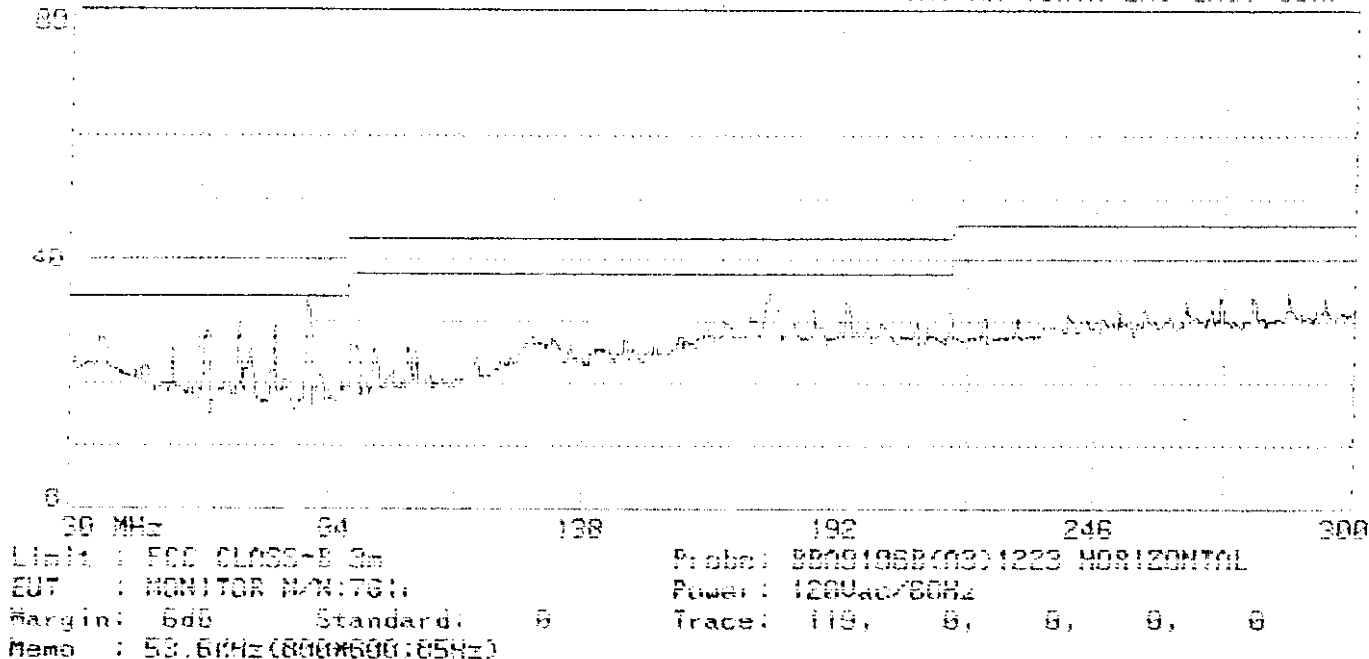
300 MHz 440 520 720 860 1000
Limit : FCC CLASS-B 3m Probe: UNALP91079(03)1223 HORIZONTAL
EUT : MONITOR M/N:761 Power : 120Vac/60Hz
Margin: 6dB Standard: 0 Trace: 125, 0, 0, 0, 0
Memo : 31.5KHz (540*400:60Hz)

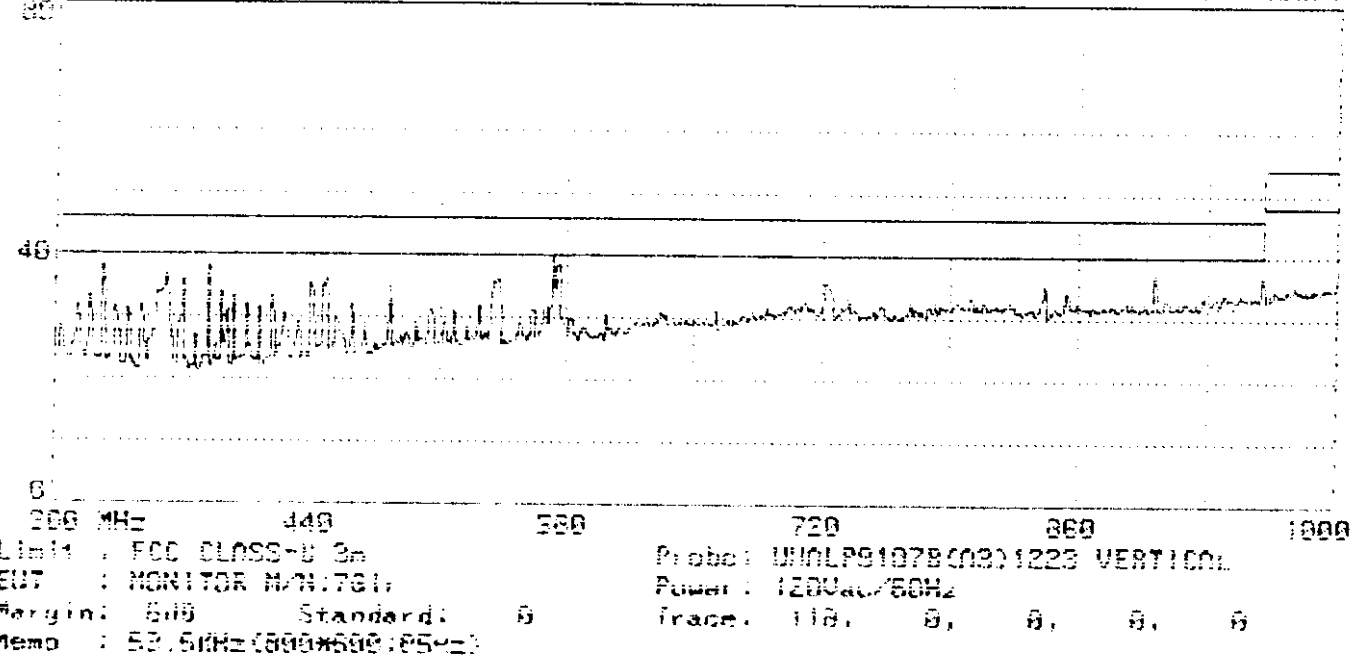
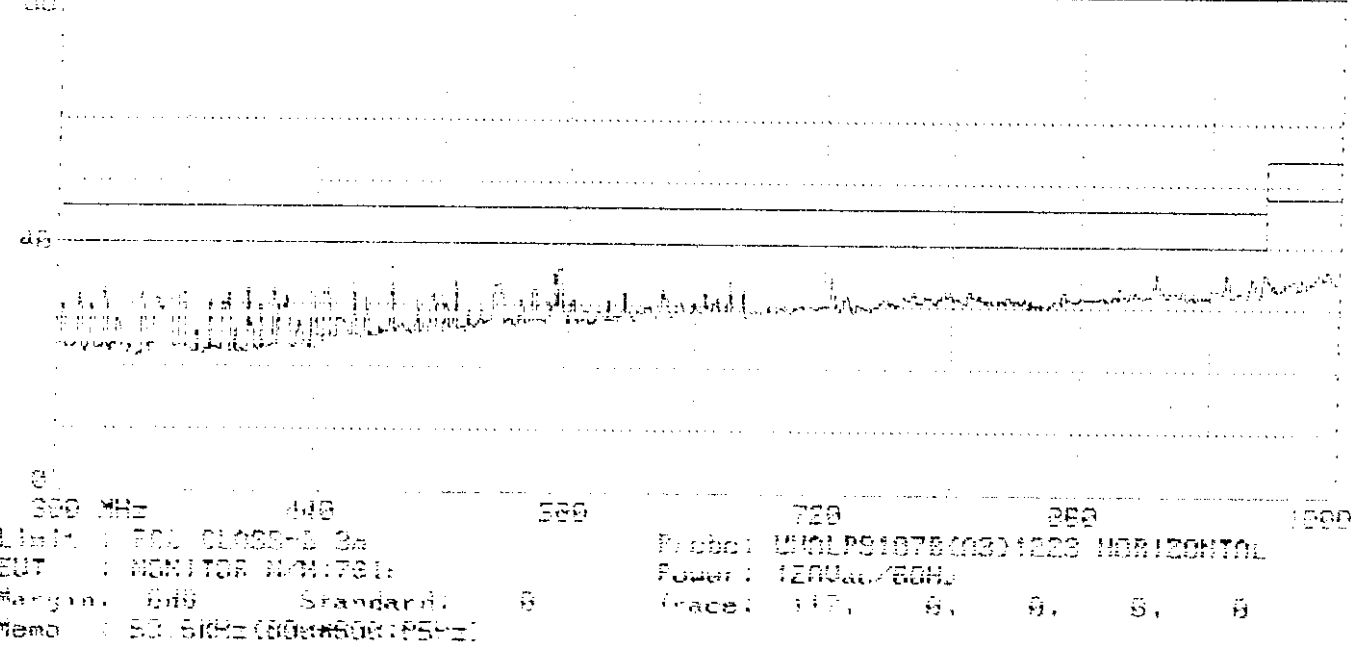


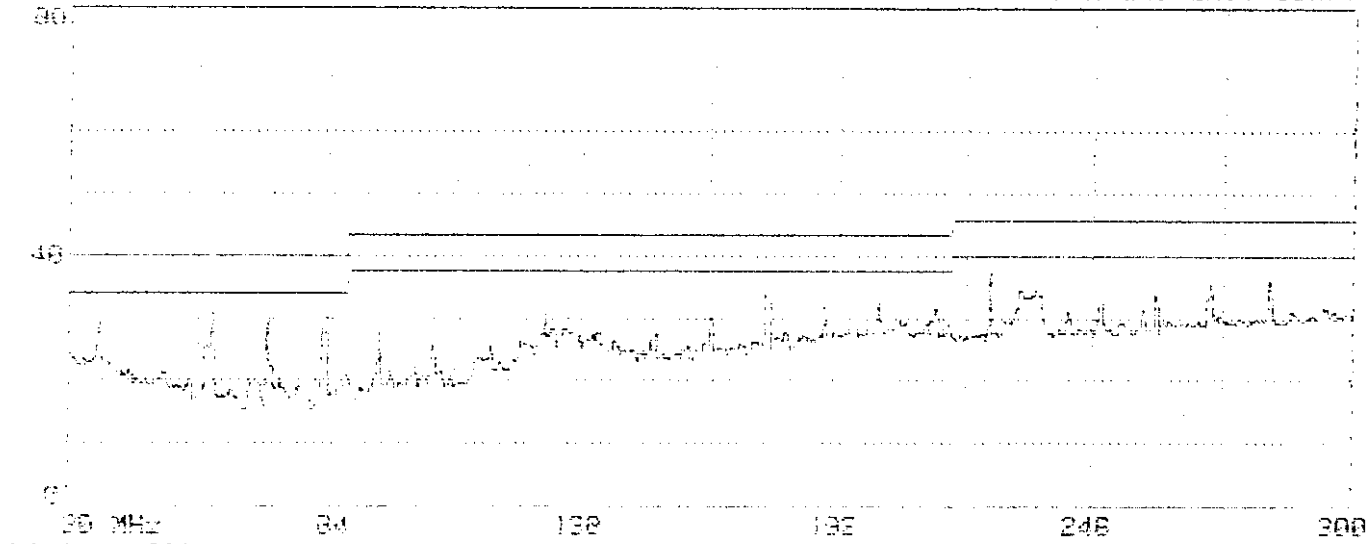
300 MHz 440 520 720 860 1000
Limit : FCC CLASS-B 3m Probe: UNALP91079(03)1223 VERTICAL
EUT : MONITOR M/N:761 Power : 120Vac/60Hz
Margin: 6dB Standard: 0 Trace: 126, 0, 0, 0, 0
Memo : 31.5KHz (640*400:60Hz)



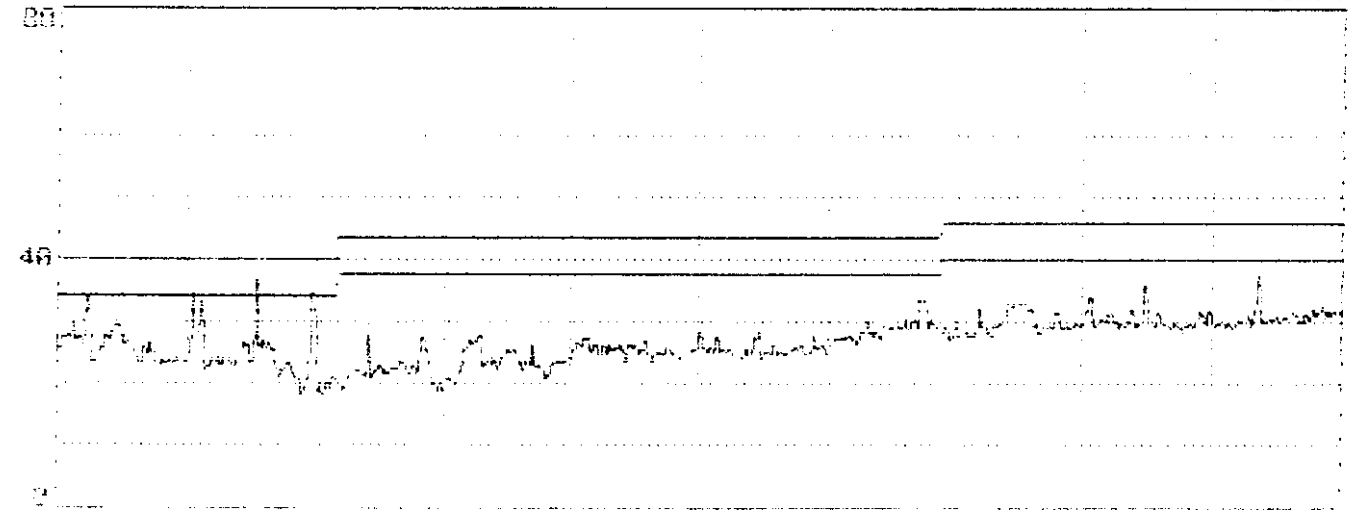




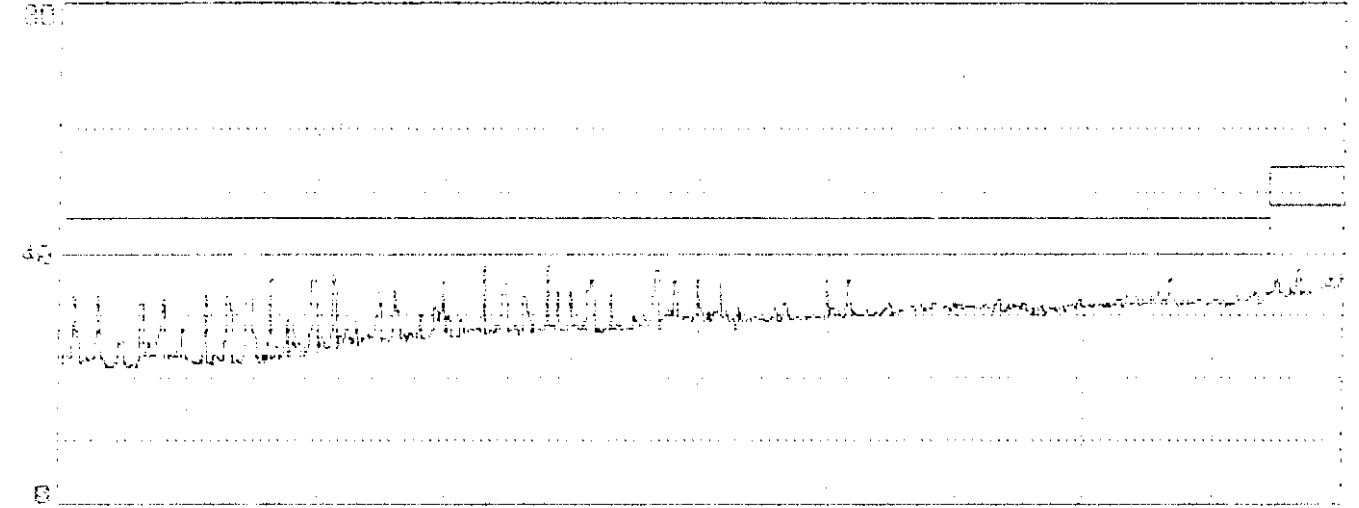




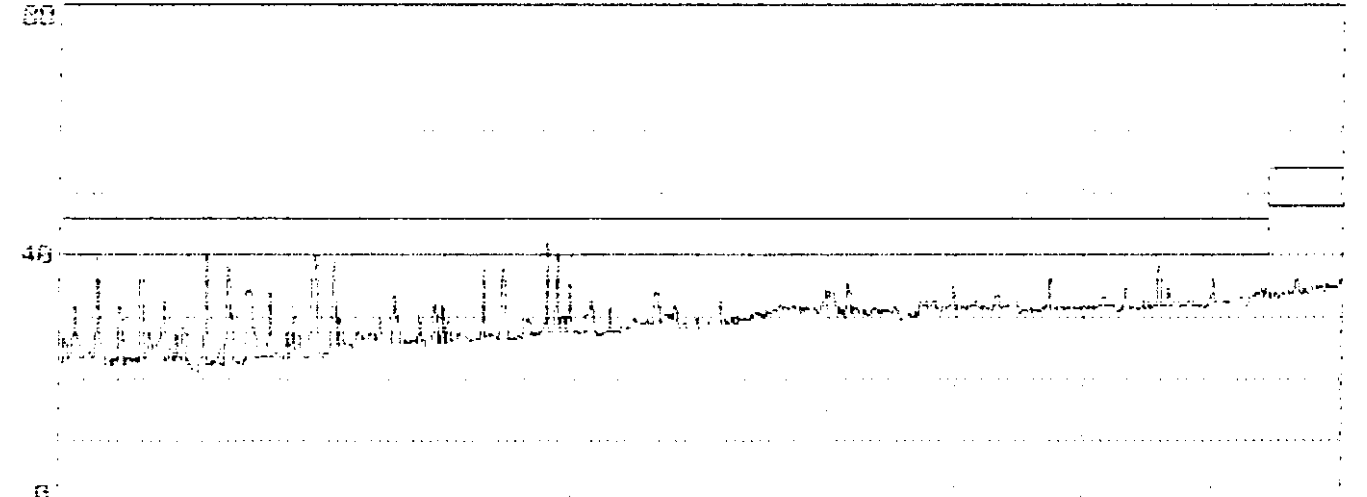
30 MHz 34 130 132 246 300
Limit : FCC CLASS-B 3m Probe: BB091055(03)1225 HORIZONTAL
EUT : MONITOR M/N:781 Power : 120Vac/50Hz
Margin: 6dB Standard: B Trace: 113, 9, 9, 9, 9
Memo : 55 70Hz (1024*768:85Hz)



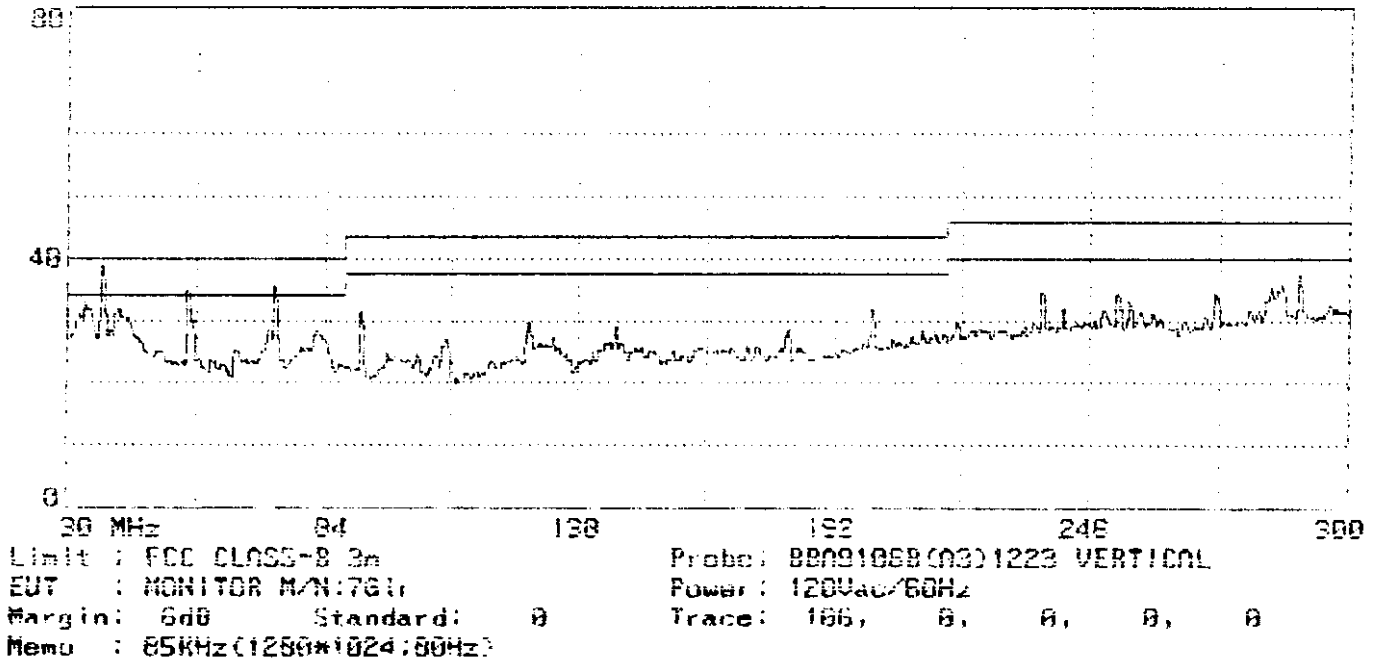
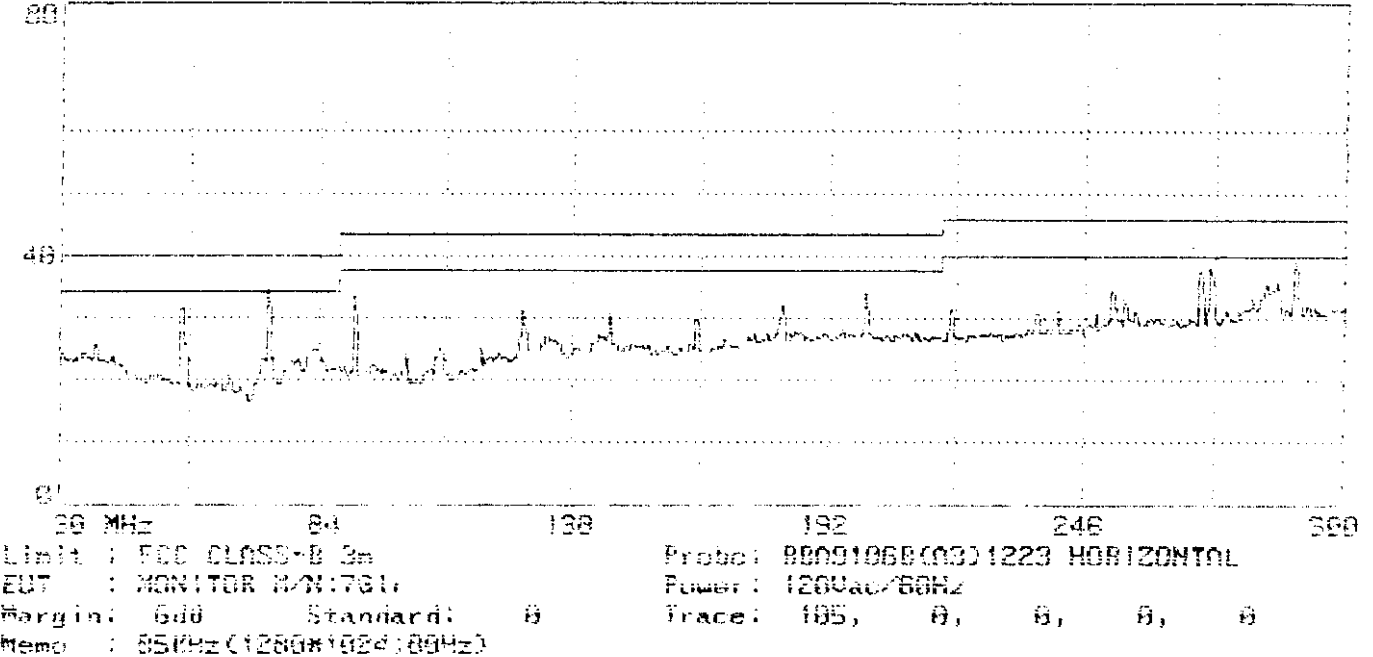
30 MHz 34 130 132 246 300
Limit : FCC CLASS-B 3m Probe: BB091058(03)1223 VERTICAL
EUT : MONITOR M/N:781 Power : 120Vac/60Hz
Margin: 6dB Standard: B Trace: 114, 9, 9, 9, 9
Memo : 60 70Hz (1024*768:85Hz)

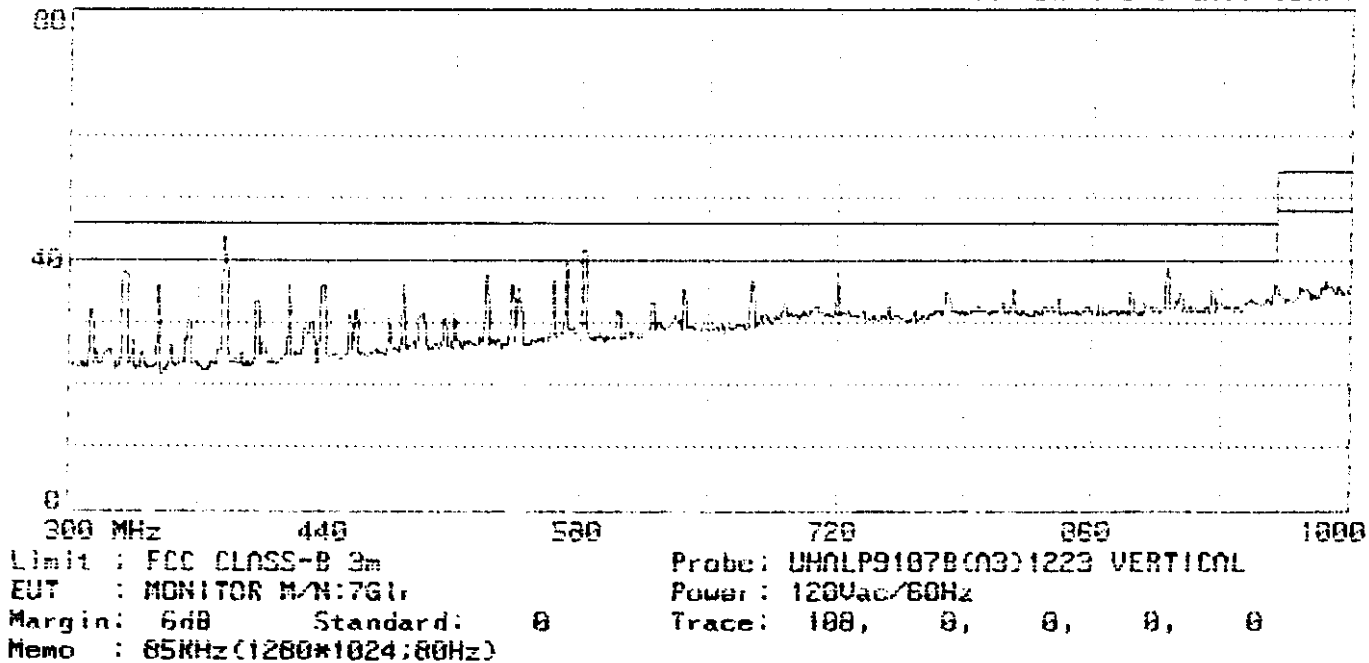
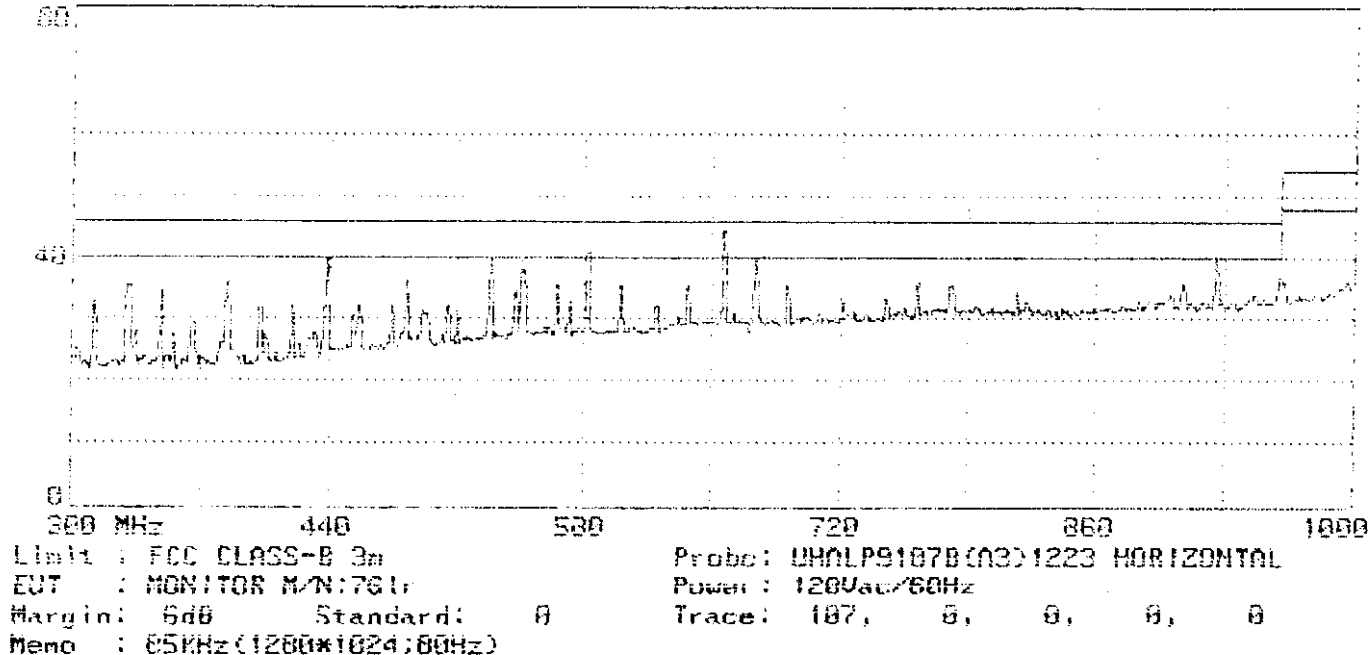


300 MHz 440 580 720 860 1000
Limit : FCC CLASS-B 3m Probe: UNALP91078(O3)1223 HORIZONTAL
EUT : MONITOR M/N:761r Power : 120Vac/60Hz
Margin: 6dB Standard: 6 Trace: 115, 0, 0, 0, 0
Memo : 68.7KHz(1024*768;85Hz)



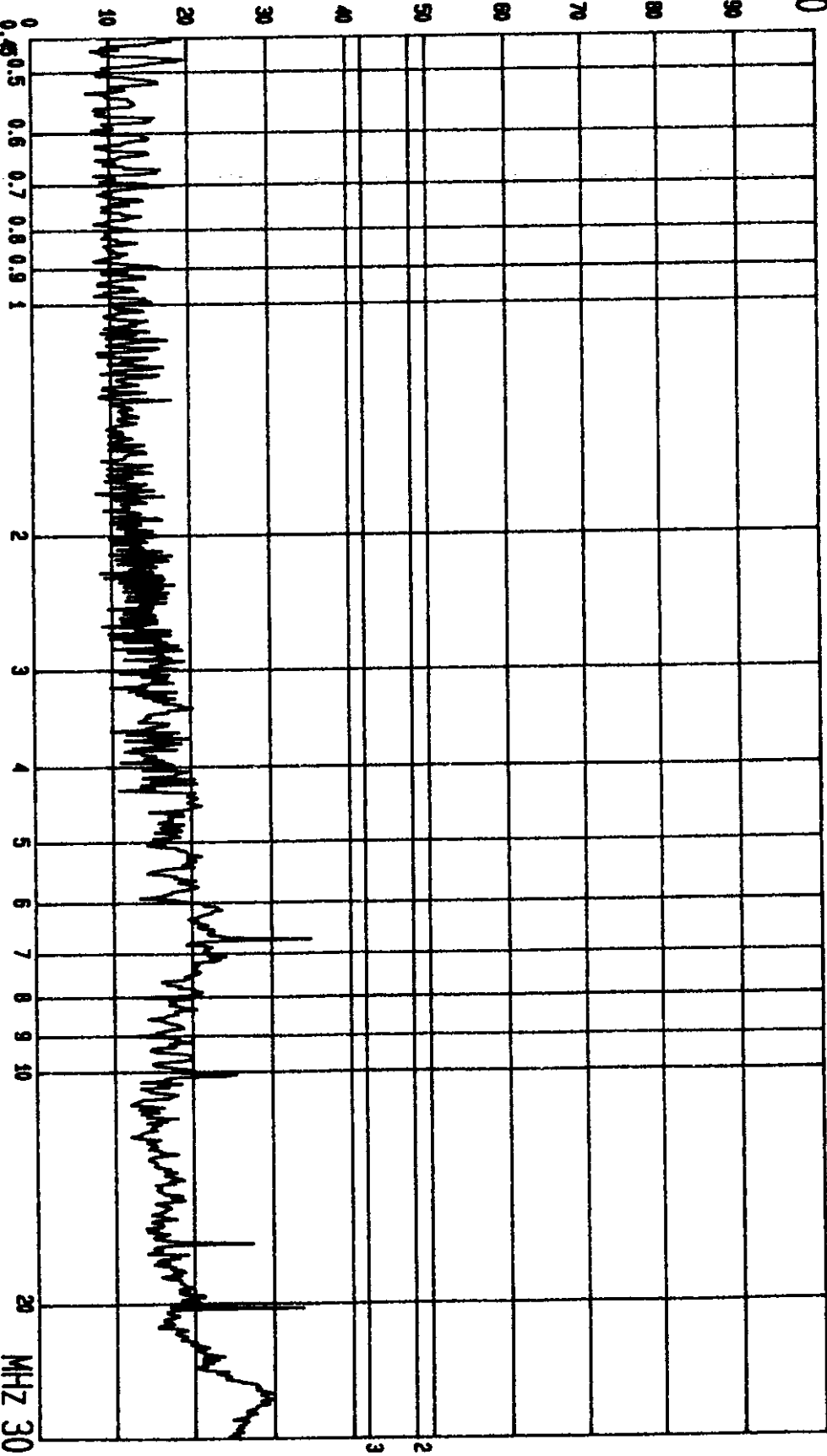
300 MHz 440 580 720 860 1000
Limit : FCC CLASS-B 3m Probe: UNALP91078(O3)1223 VERTICAL
EUT : MONITOR M/N:761r Power : 120Vac/60Hz
Margin: 6dB Standard: 6 Trace: 116, 0, 0, 0, 0
Memo : 68.7KHz(1024*768;85Hz)





DBUV

100



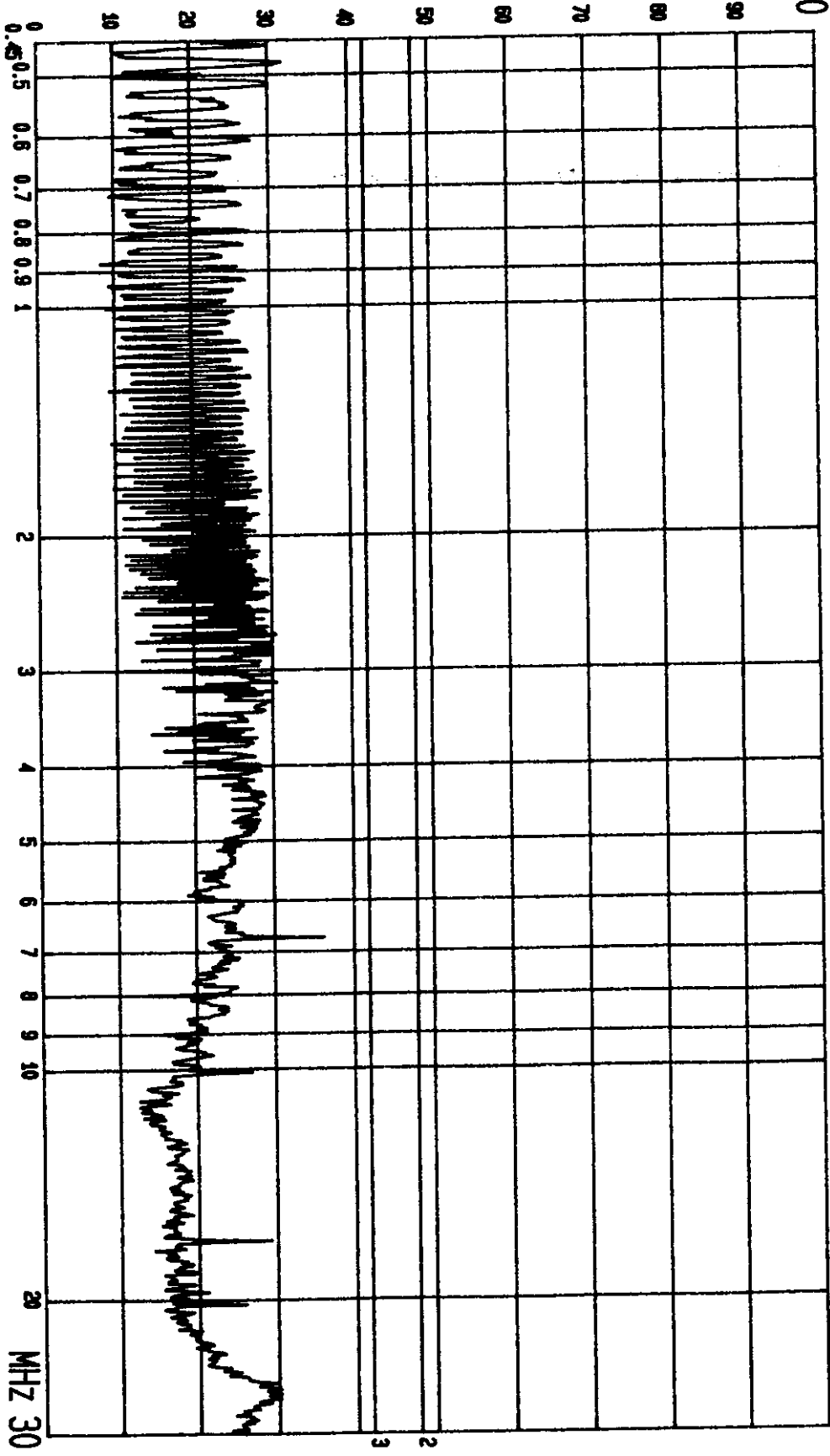
--- Date 21. OCT '98 Time 16: 40: 20
 Top Victory EUT: Monitor
 LINE: VA. MEND: 31. 5KHz (640X480; 60Hz)

M/N: 761r
 EUT TO LISN

PAGE: 006.
 (PEAK VALUE) TTEMC.

DBUV

100



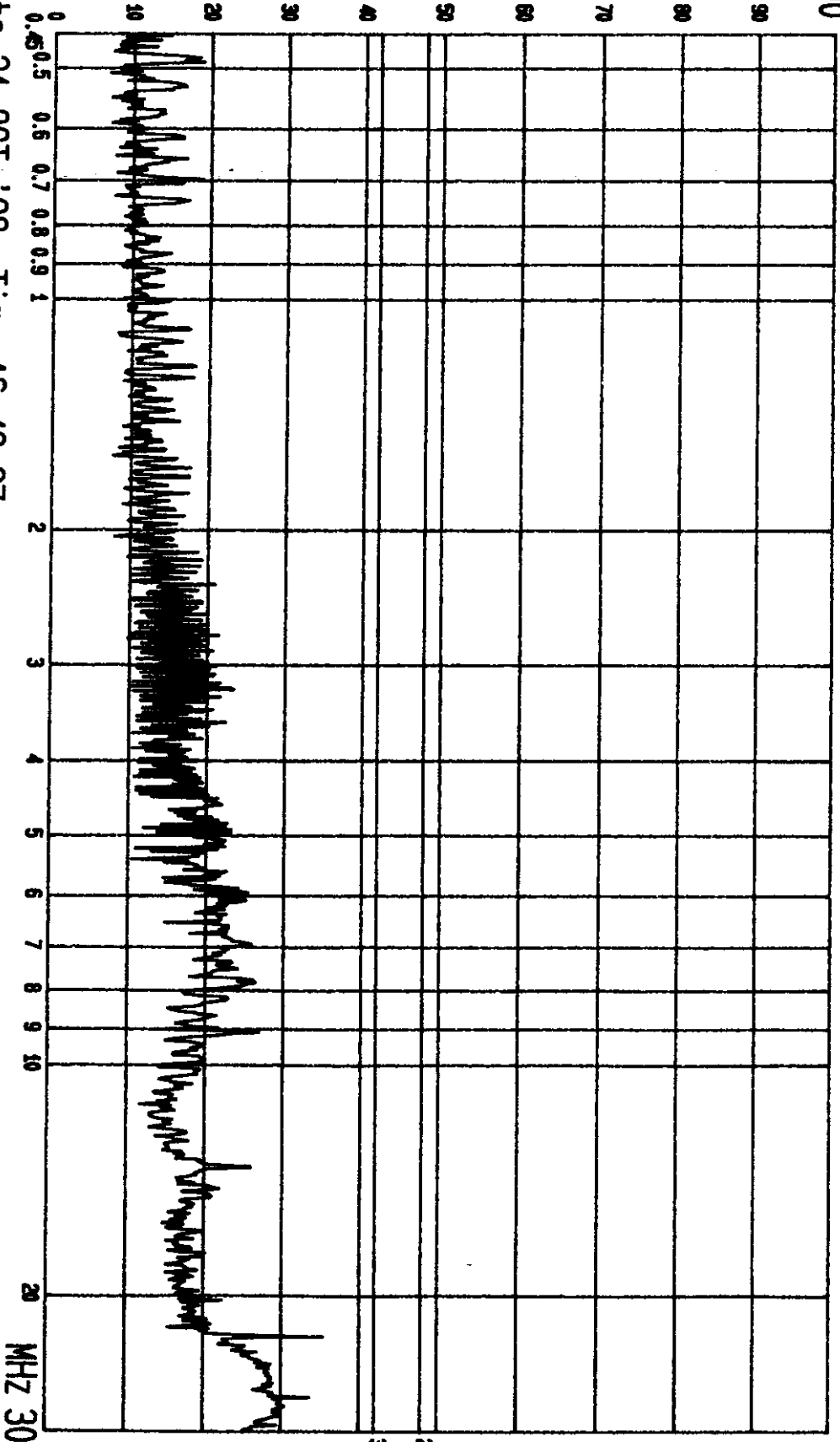
Date 21.OCT '98 Time 16:38:43
 TOP Victory
 EUT: Monitor
 LINE: VB. MENO: 31.5KHZ (640X480; 60HZ)

M/N: 761r
 EUT TO LISN

PAGE: 005.
 (PEAK VALUE) TEMC.

dBuV

100



Date 21.OCT '98 Time 16:42:27
 TOP Victory
 LINE: VA.

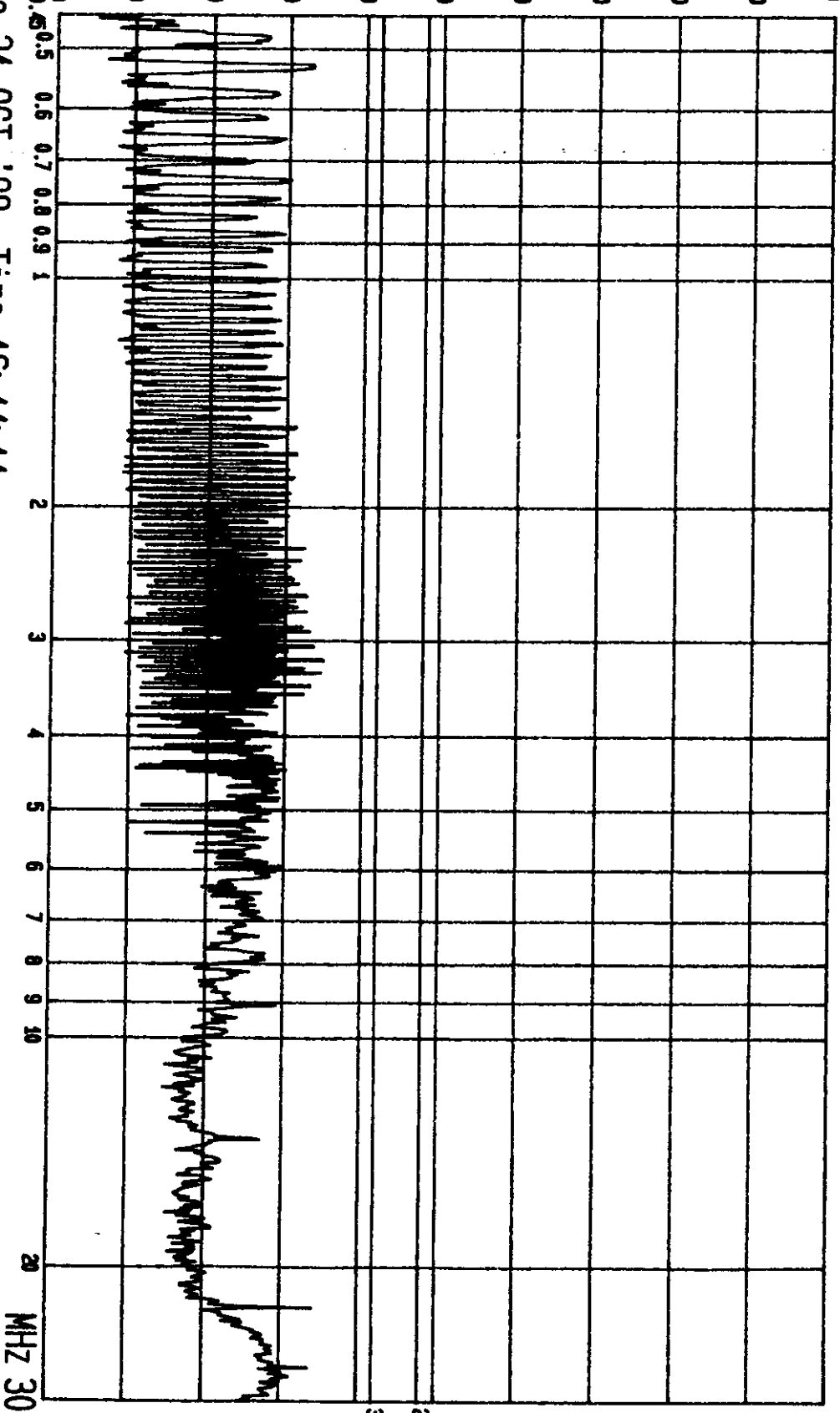
EUT: Monitor
 MENO: 43.2KHz (640X480; 85Hz)

M/N: 761r
 EUT TO LISN

PAGE: 007.
 (PEAK VALUE) TTEM:

dBuV

100



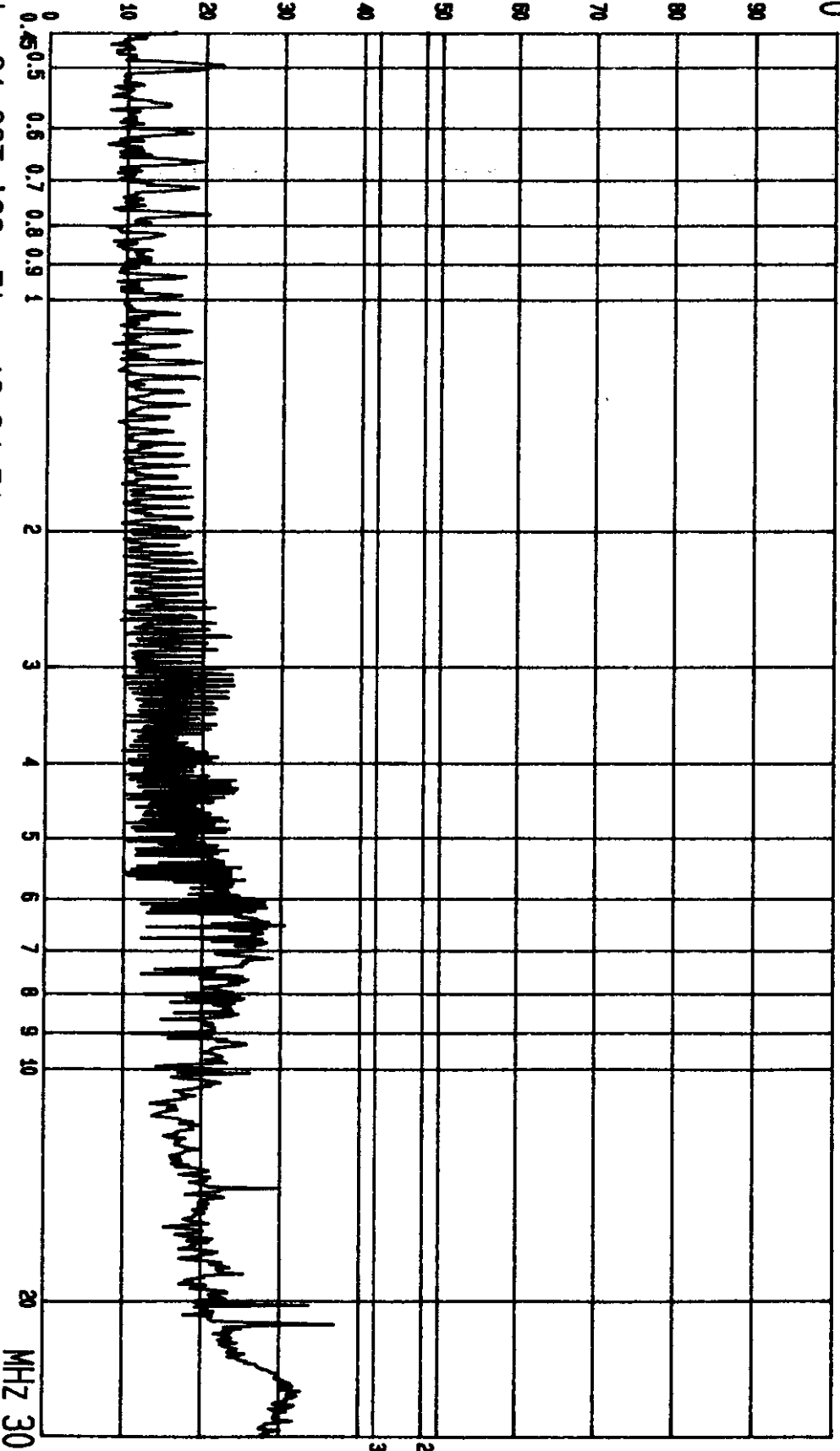
Date 21.OCT '98 Time 16:44:11
 Top Victory
 EUT: Monitor
 LINE: VB: MEND: 43.2KHz (640X480; 85Hz)

M/N: 761r
 EUT TO LISN

PAGE: 008.
 (PEAK VALUE) TTEM.C.

DBU V

100



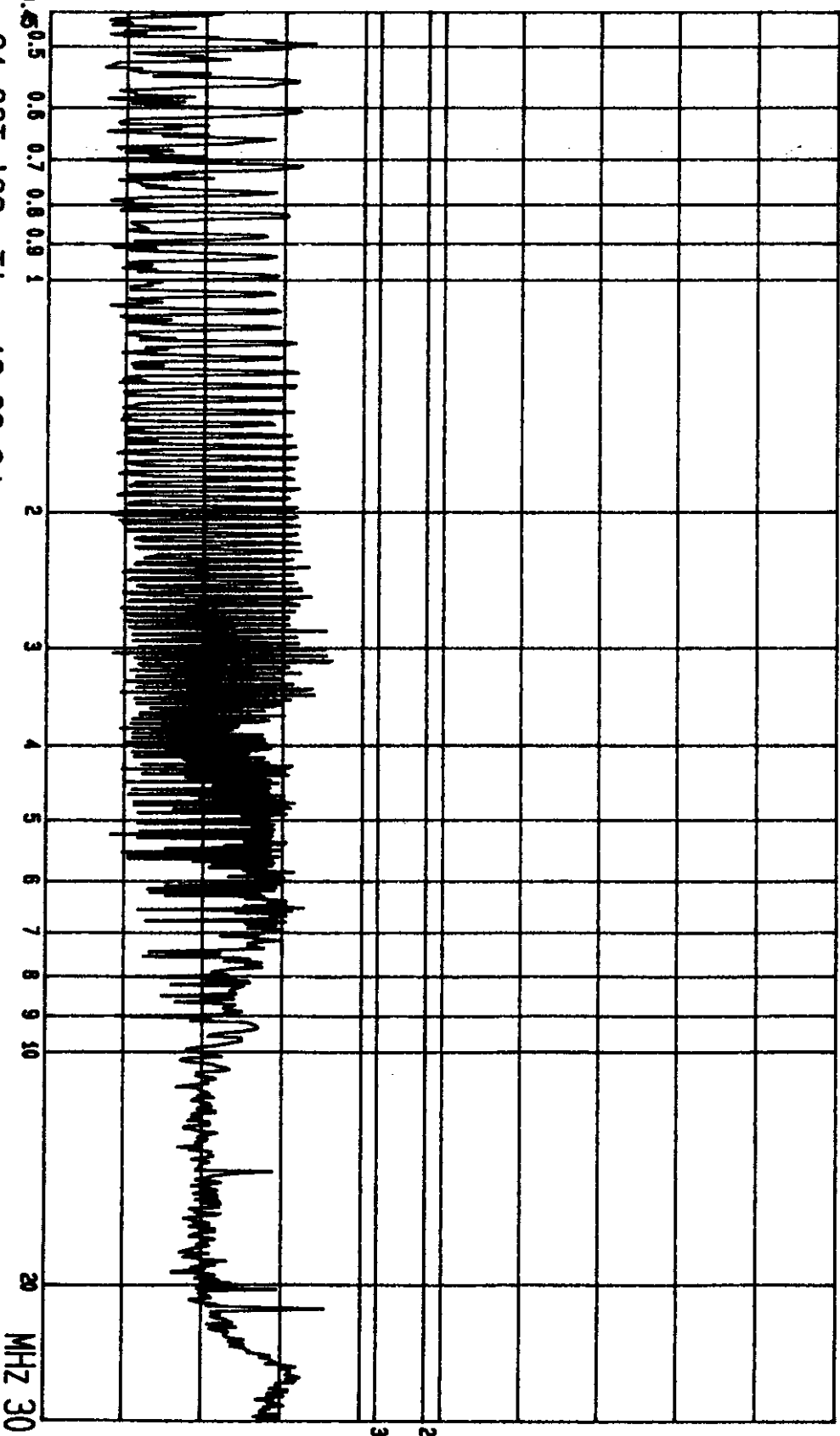
----- Date 21.OCT '98 Time 16:34:51
Top Victory
LINE: VA. EUT: Monitor
MEND: 53.6KHz (800X600; 85Hz)

M/N: 761r
EUT TO LISN

PAGE: 003.
(PEAK VALUE) TTEMPC.

DBUv

100



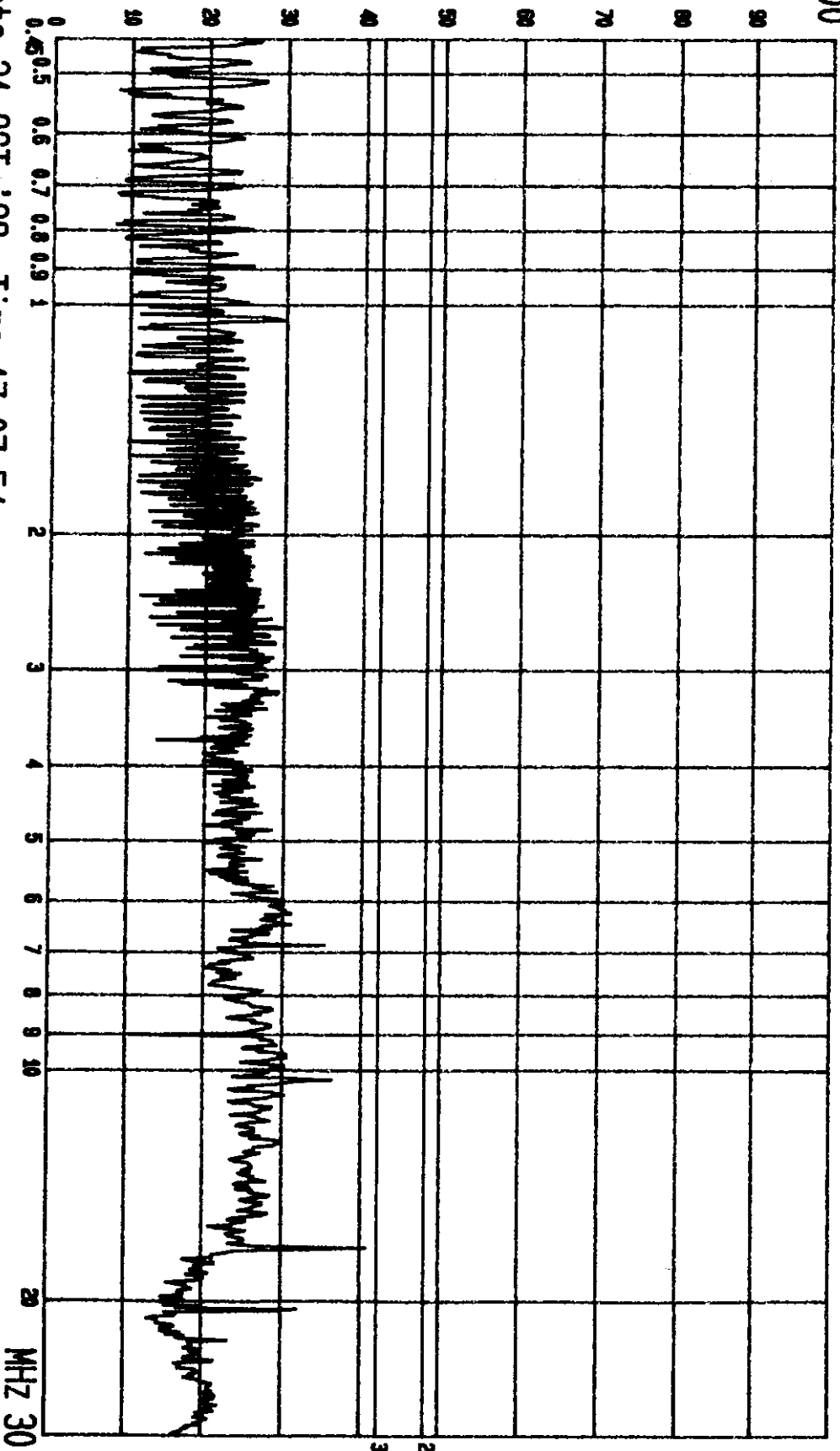
Date 21.OCT '98 Time 16:36:24
 TOP Victory
 EUT: Monitor
 LINE: VB. MENU: 53.6KHz (800X600; 85Hz)

M/N: 761P
 EUT TO LISN

PAGE: 004.
 (PEAK VALUE) TTEMC.

dBuV

100



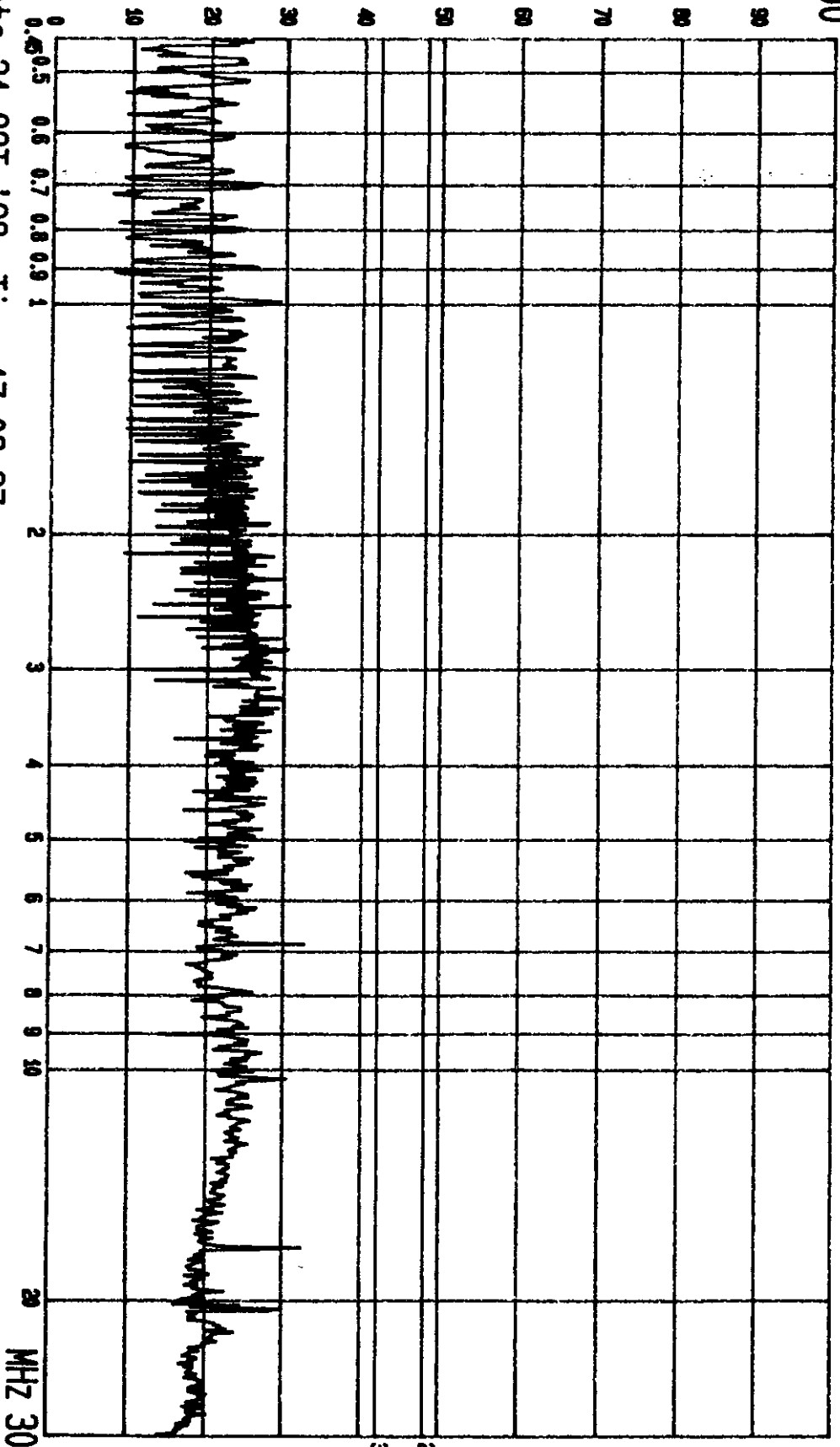
--- Date 21.OCT '98 Time 17:07:54
 TOP Victory
 LINE: VA. EUT: Monitor
 MEND: 31.5KHz (640X480; 60Hz)

M/N: 761P
 EUT TO PC

PAGE: 007.
 (PEAK VALUE) TTEM:

dBuV

100



--- Date 21.OCT '98 Time 17:09:37
 TOP Victory
 LINE: VB

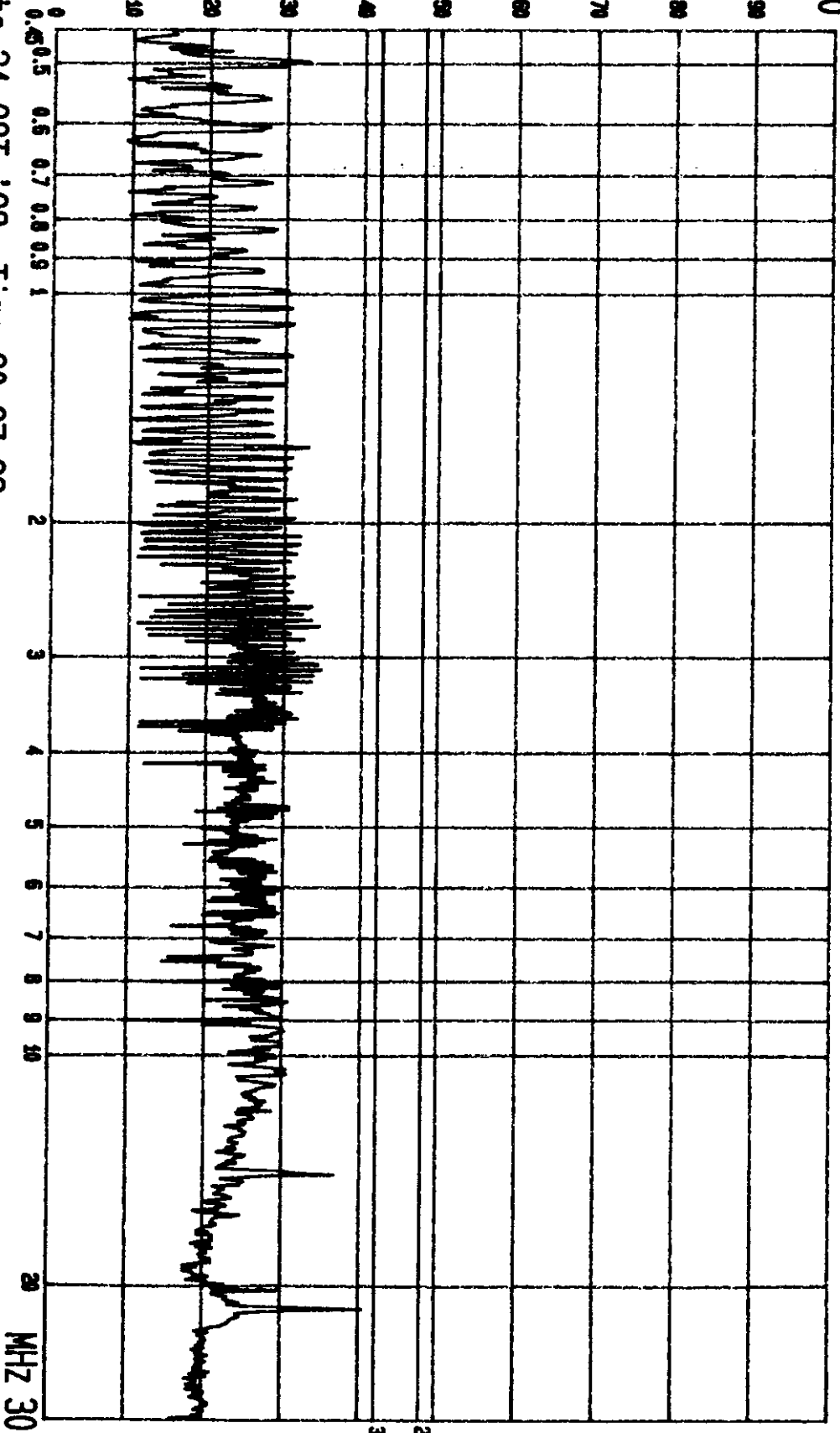
EUT: Monitor
 MEND: 31.5KHz (640X480; 60Hz)

M/N: 761r
 EUT TO PC

PAGE: 008.
 (PEAK VALUE) TTEMC.

DBU

100



Date 21.OCT '98 Time 20:27:23
 TOP Victory
 LINE: VA.

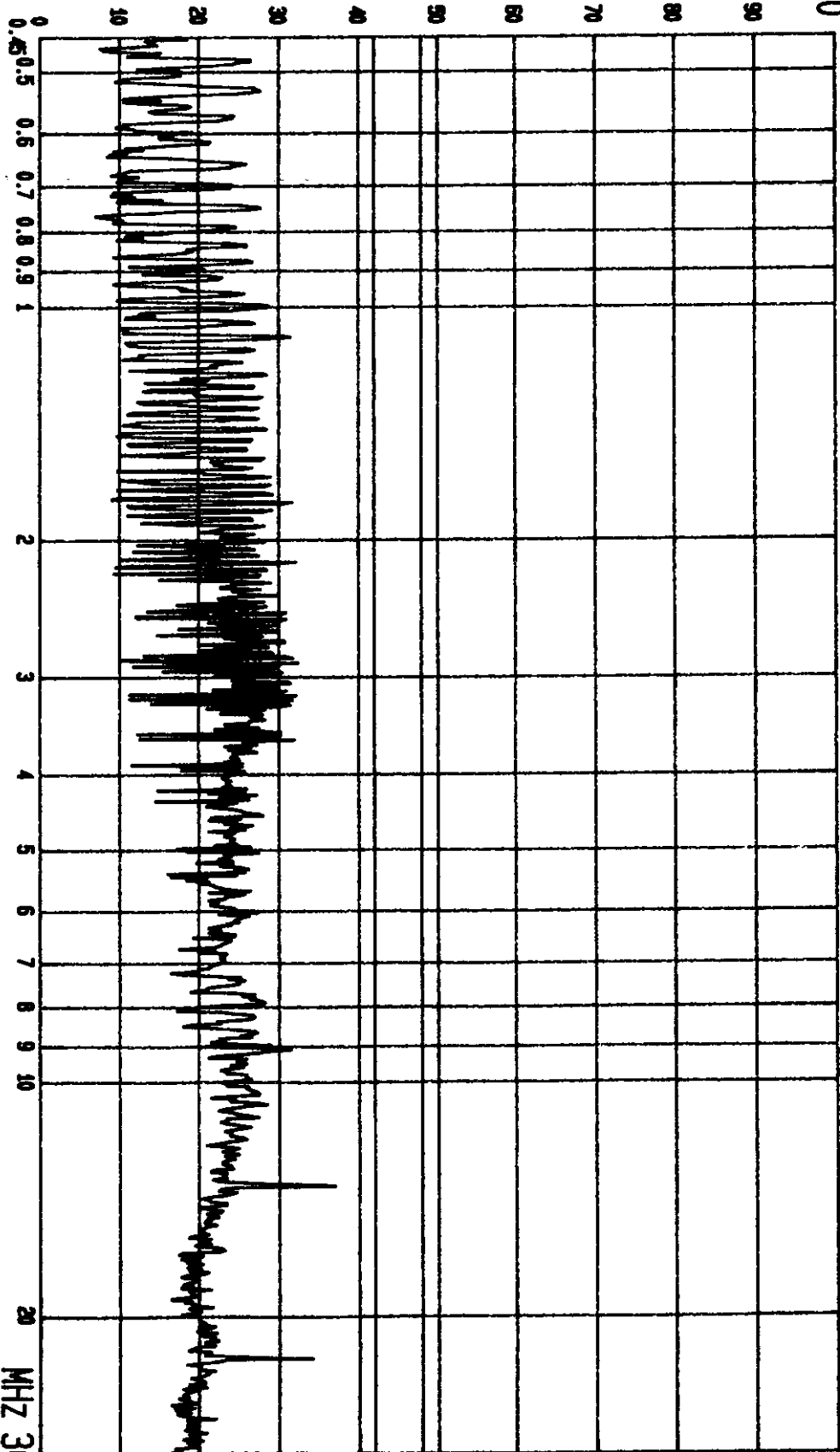
EUT: Monitor
 MEND: 43.2KHZ (640X480; 85HZ)

M/N: 7G1P
 EUT TO PC

PAGE: 002.
 (PEAK VALUE) TTEMG.

DBUY

100



MHZ 30

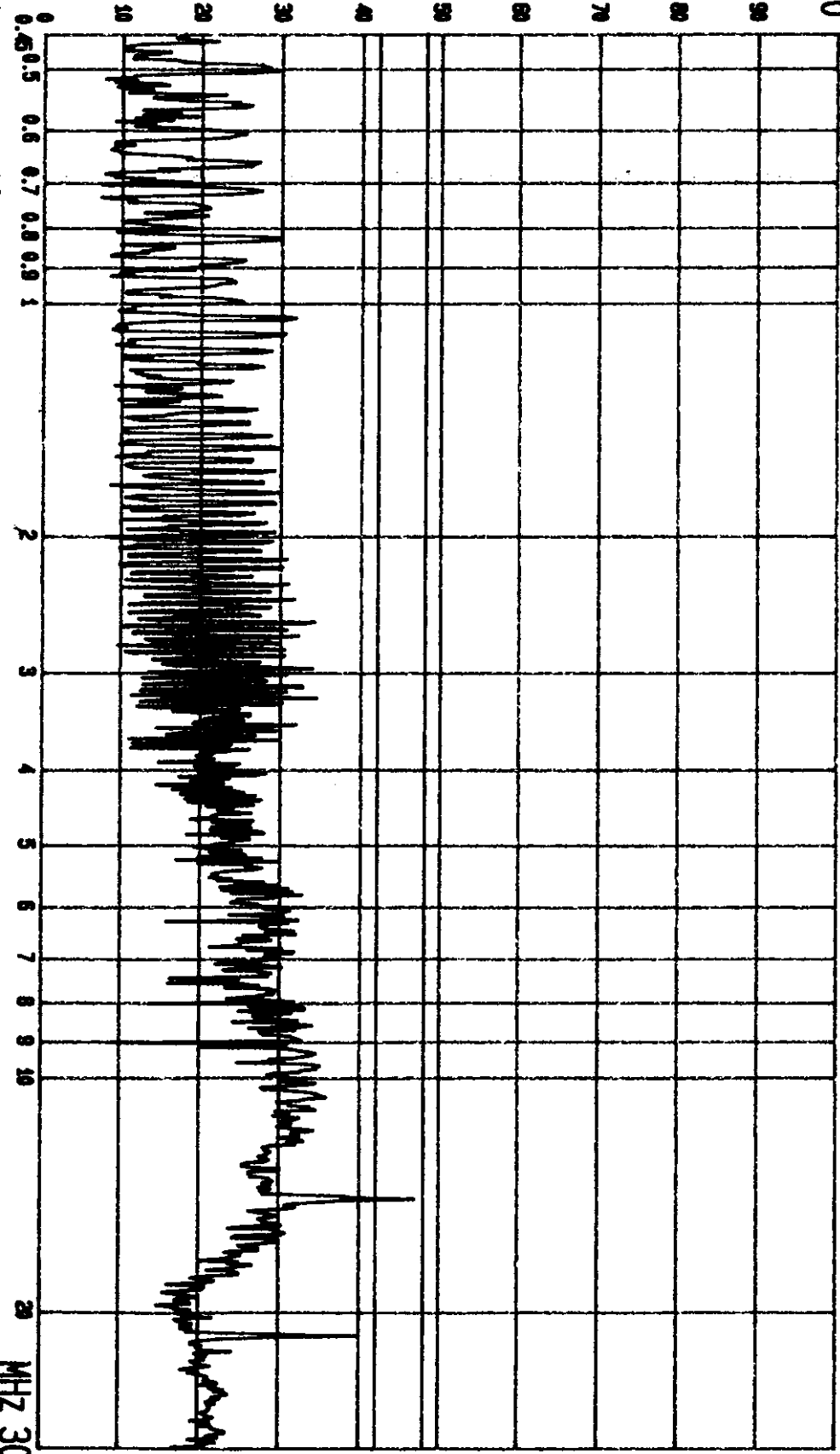
Date 21.OCT '98 Time 16:46:17
 Top Victory EUT: Monitor
 LINE: VB. MENO: 43.2KHz (640X480; 85Hz)

M/N: 761r
 EUT TO PC

PAGE: 001.
 (PEAK VALUE) TEMC:

DBUW

100



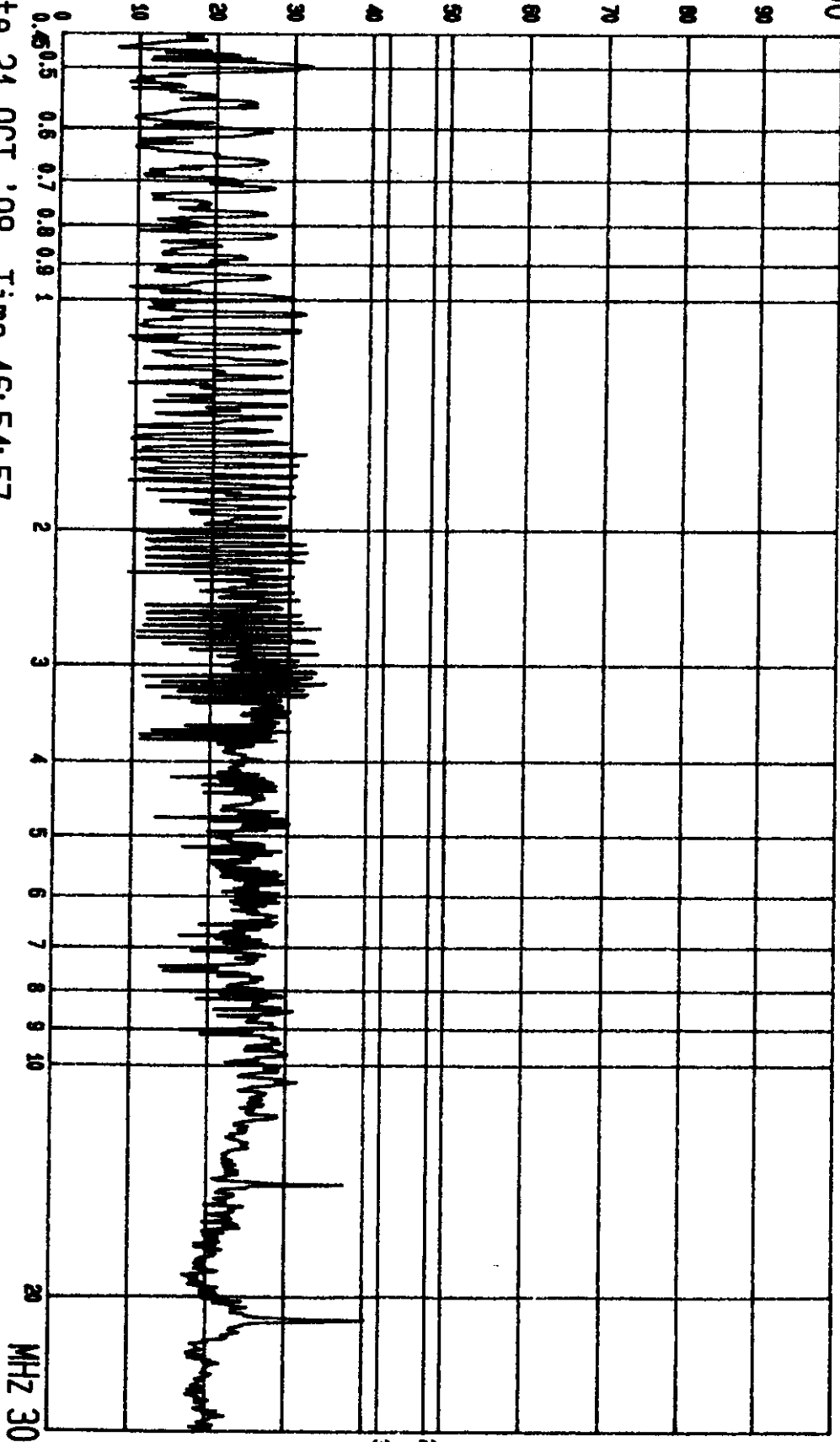
--- Date 21.OCT '98 Time 20:24:06
TOP Victory EUT: Monitor
LINE: VA. MENC: 53.6KHz (800X600; 85Hz)

M/N: 761P
EUT 10 PC

PAGE: 003.
(PEAK VALUE) TTEMC.

DBUV

100

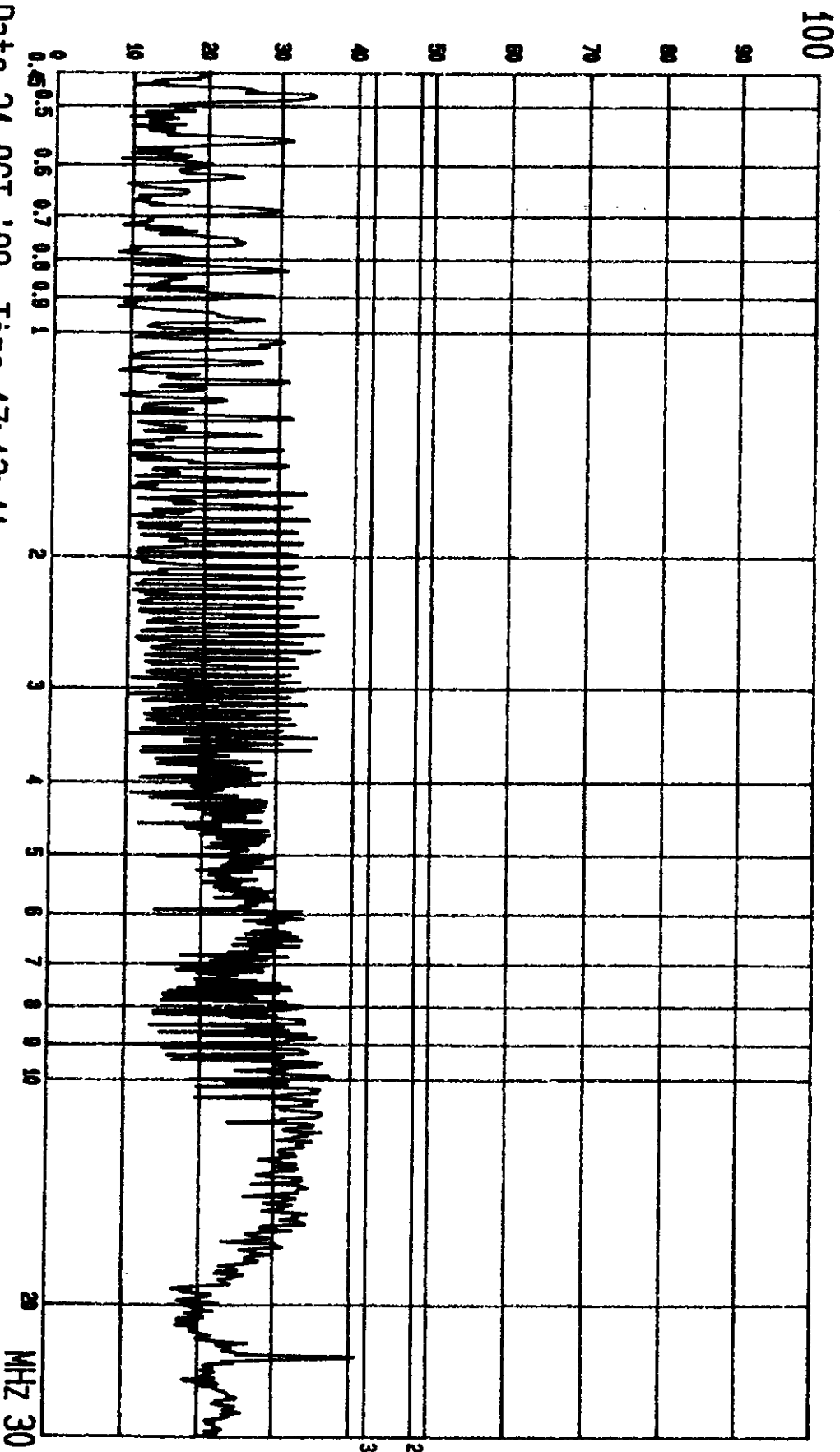


--- Date 21.OCT '98 Time 16:54:57
TOP Victory EUT: Monitor
LINE: VB. MEND: 53.6KHz (800X600; 85Hz)

M/N: 761P
EUT TO PC

PAGE: 004.
(PEAK VALUE) TTEM.C.

dBuV



--- Date 21.OCT '98
TOP Victory
LINE: VA.

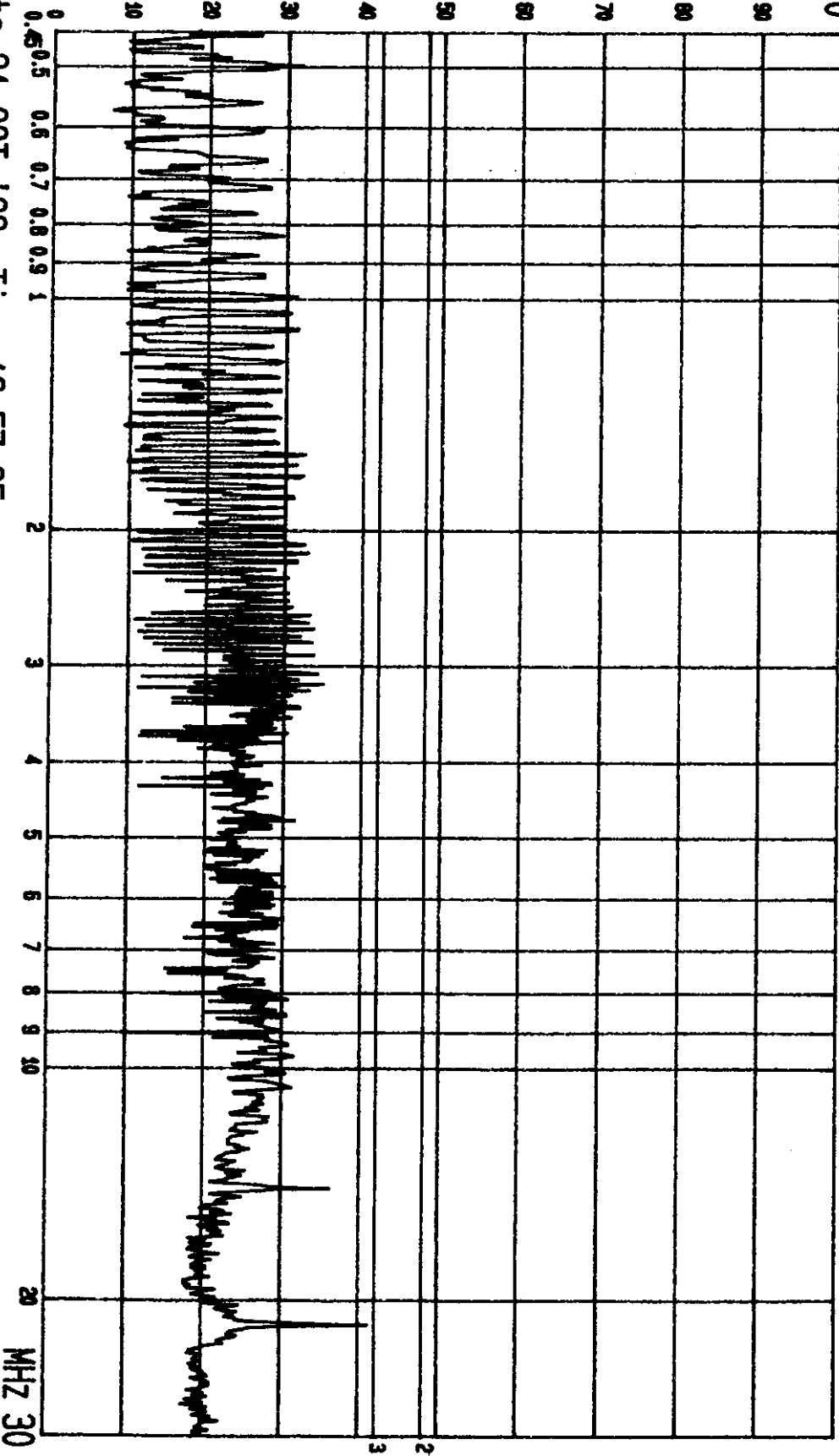
Time 17:13:41
EUT: Monitor
MENO: 68.7KHz (1024X768; 85Hz)

M/N: 761P
EUT TO PC

PAGE: 006.
(PEAK VALUE) TTEMC.

DBU V

100



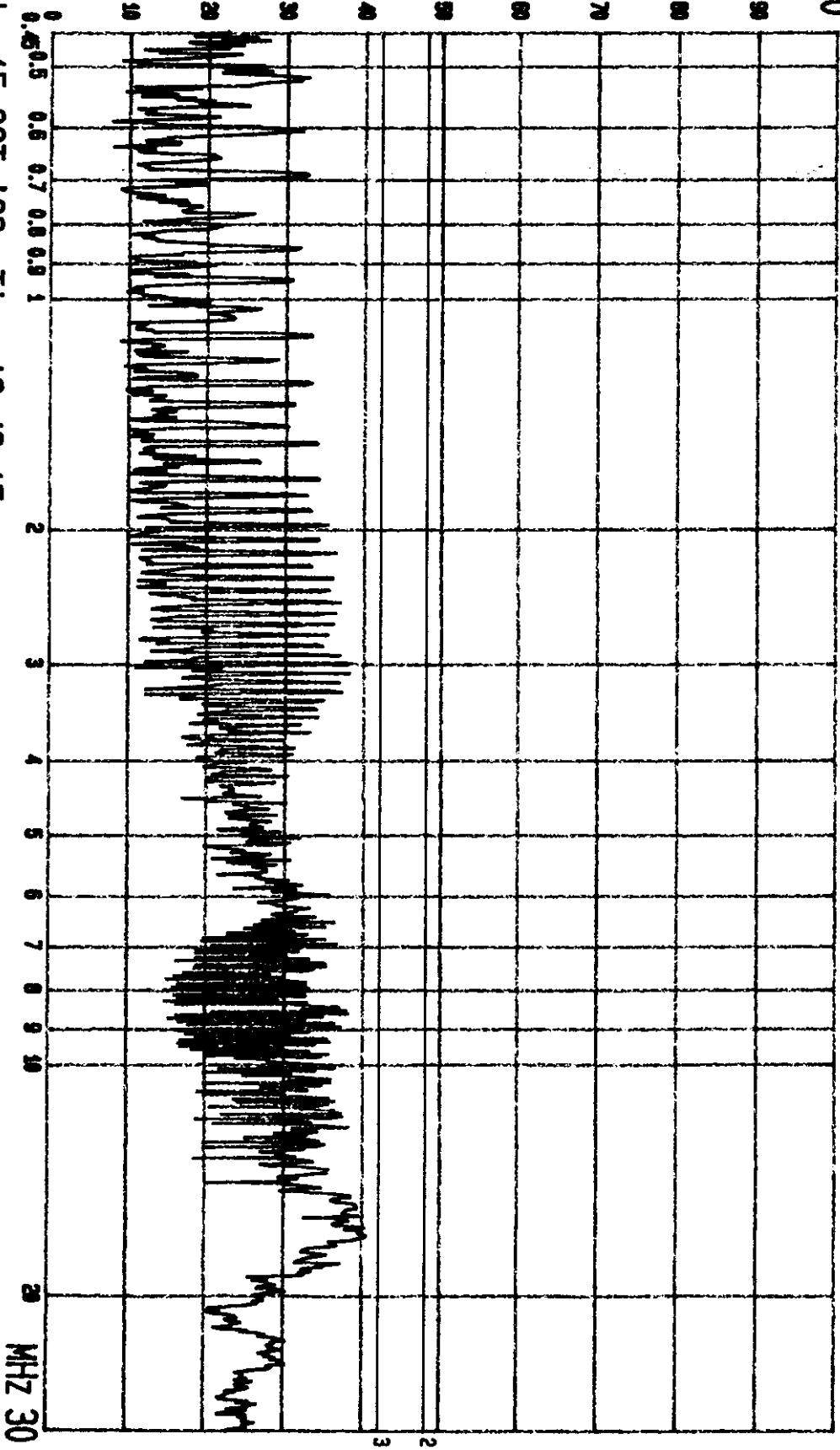
----- Date 21.OCT '98 Time 16:57:35
TOP Victory EUT: Monitor
LINE: VB. MENU: 68.7KHz (1024X768; 85Hz)

M/N: 761P
EUT TO PC

PAGE: 005.
(PEAK VALUE) TTEMG.

dBuV

100



--- Date 15. OCT '98

Time 16:48:15

Top Victory

EUT: Monitor

MEND: 85KHZ (1280X1024; 80HZ) EUT TO PC

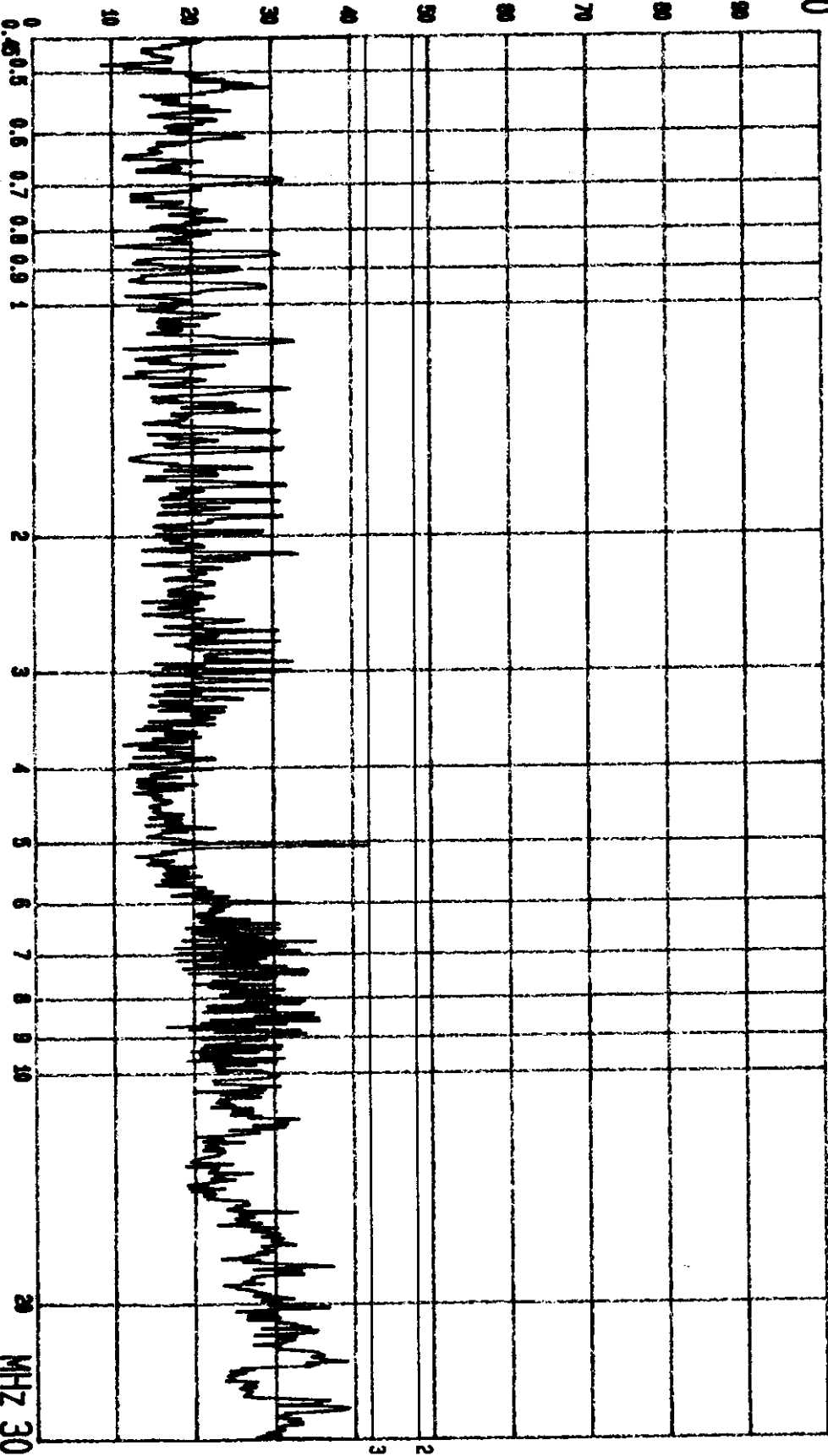
M/N: 761P

PAGE: 004.
(PEAK VALUE) TTEMC.

MHz 30

DBUW

100



--- Date 15.OCT '98
TOP Victory
LINE: VB.

Time 16:28:43
EUT: Monitor
MENC: 85KHZ (1280X1024; 80Hz)

M/N: 761P
EUT TO PC

PAGE: 003.
(PEAK VALUE) TTEMC.