

*Photographs*

*Figure 1  
General Appearance (Front, Top & Side View)*



*Figure 2  
General Appearance (Rear, Bottom & Side View)*



Figure 3  
Removed Back Cover, Frame of Internal

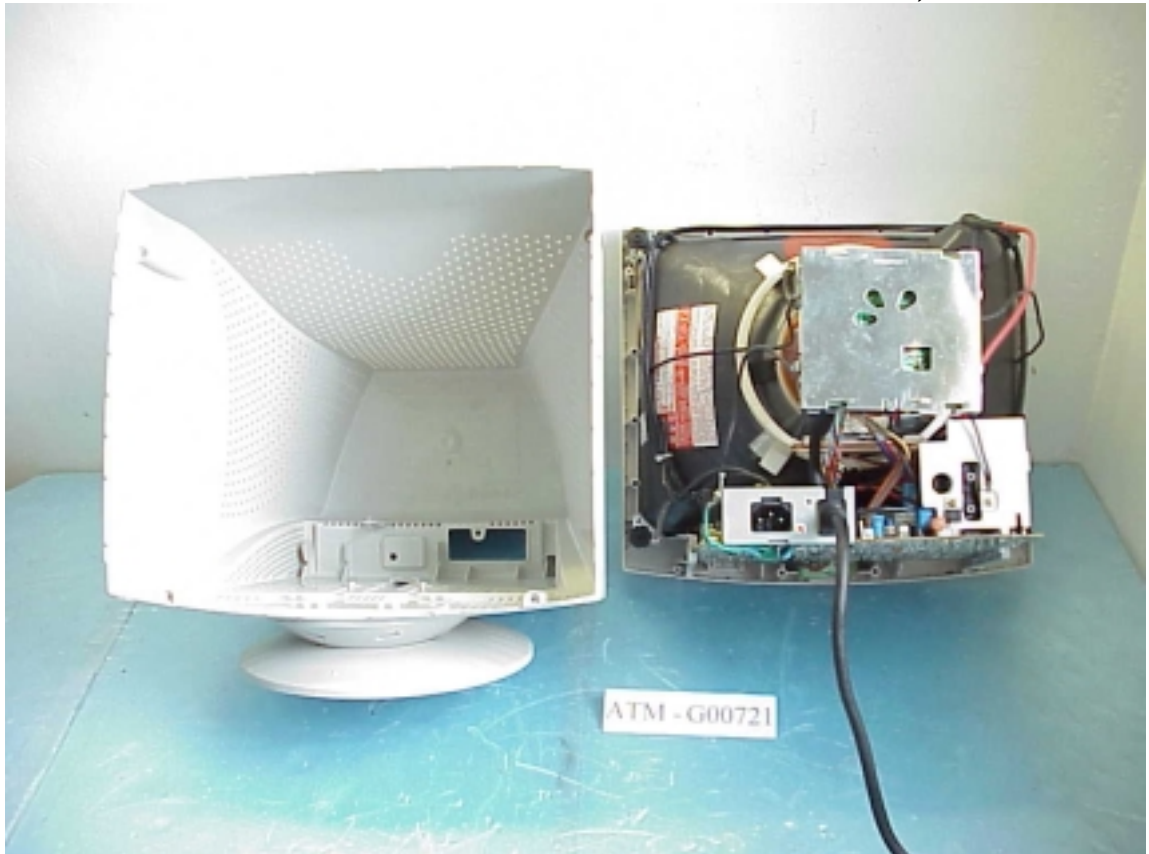


Figure 4  
Frame of CRT (Internal View)

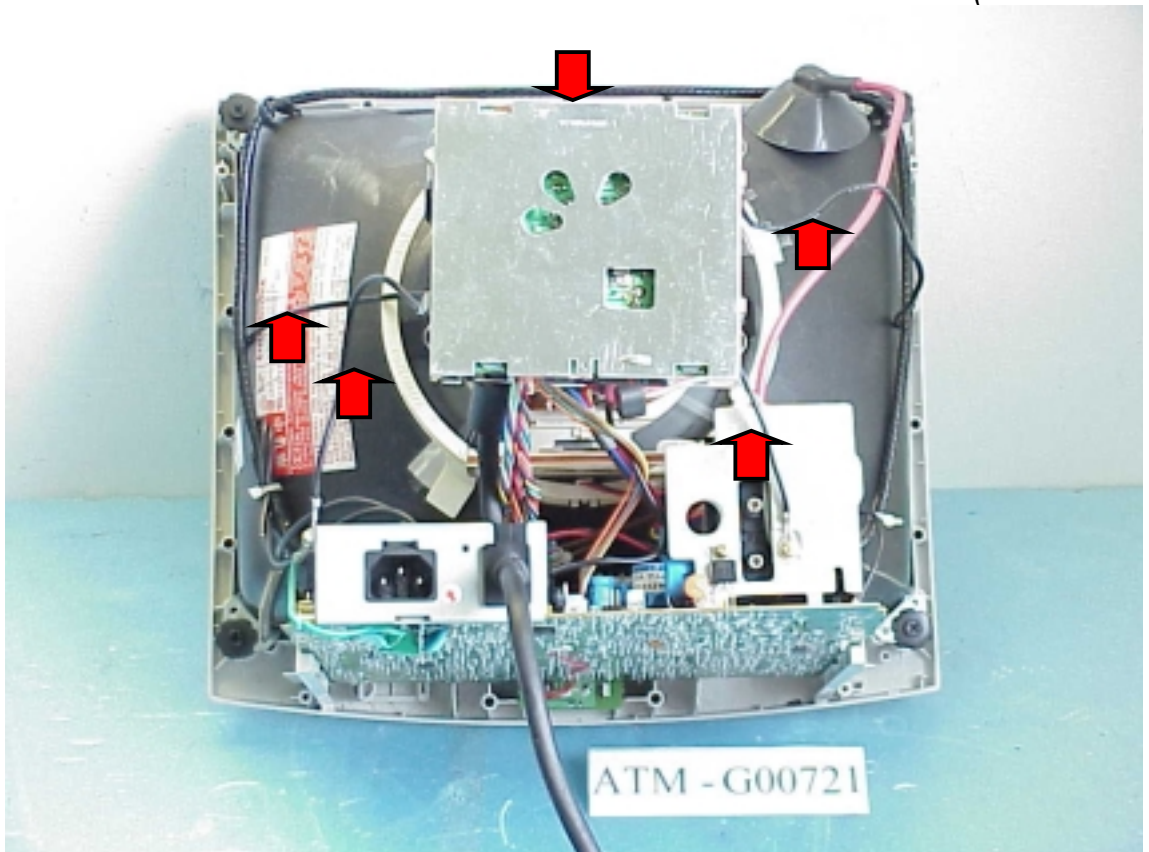


Figure 5  
Internal View

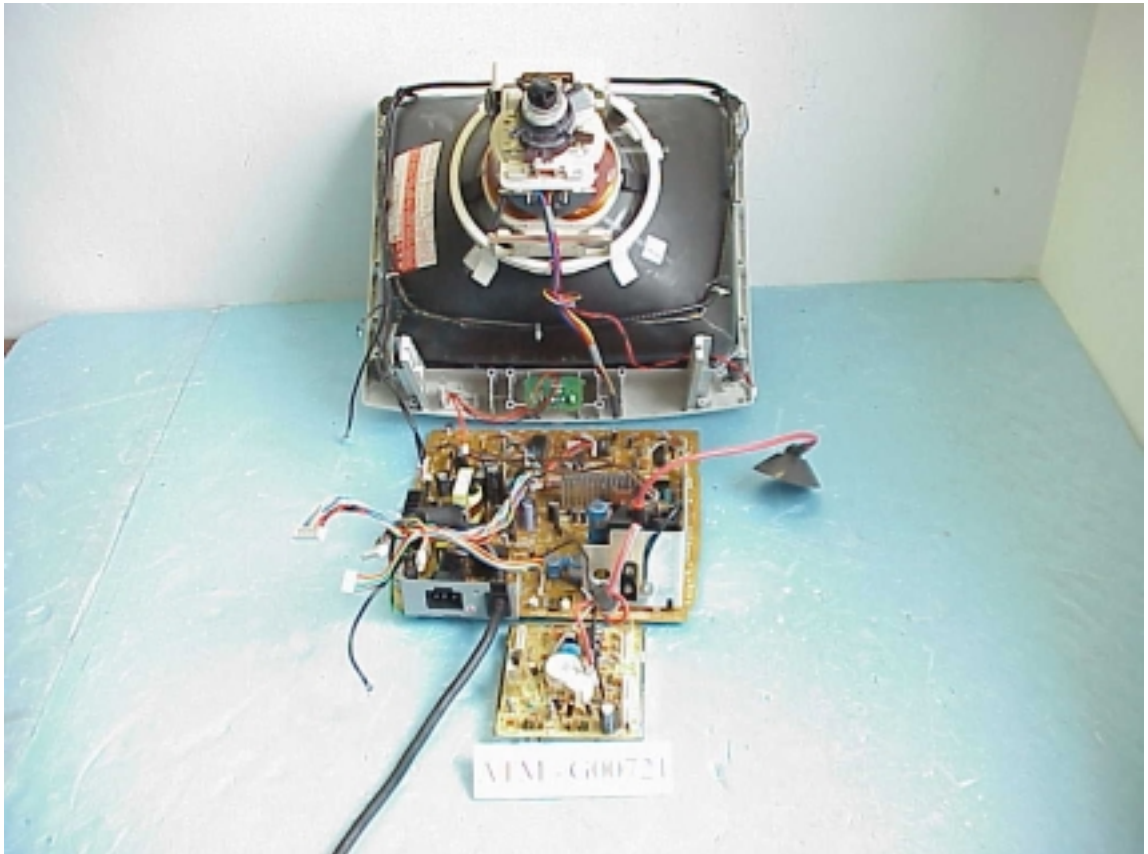


Figure 6  
Main Board (Component Side)

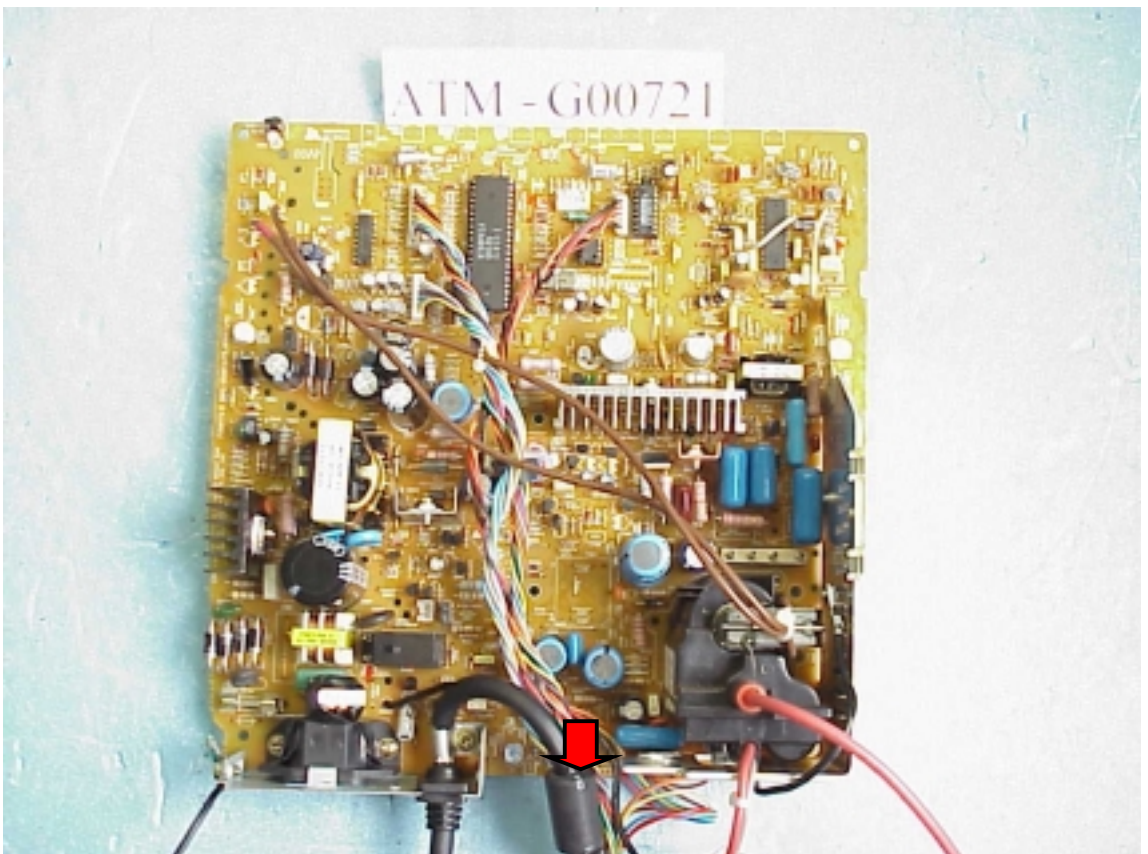


Figure 7  
Main Board (Foil Side)



Figure 8  
Internal View

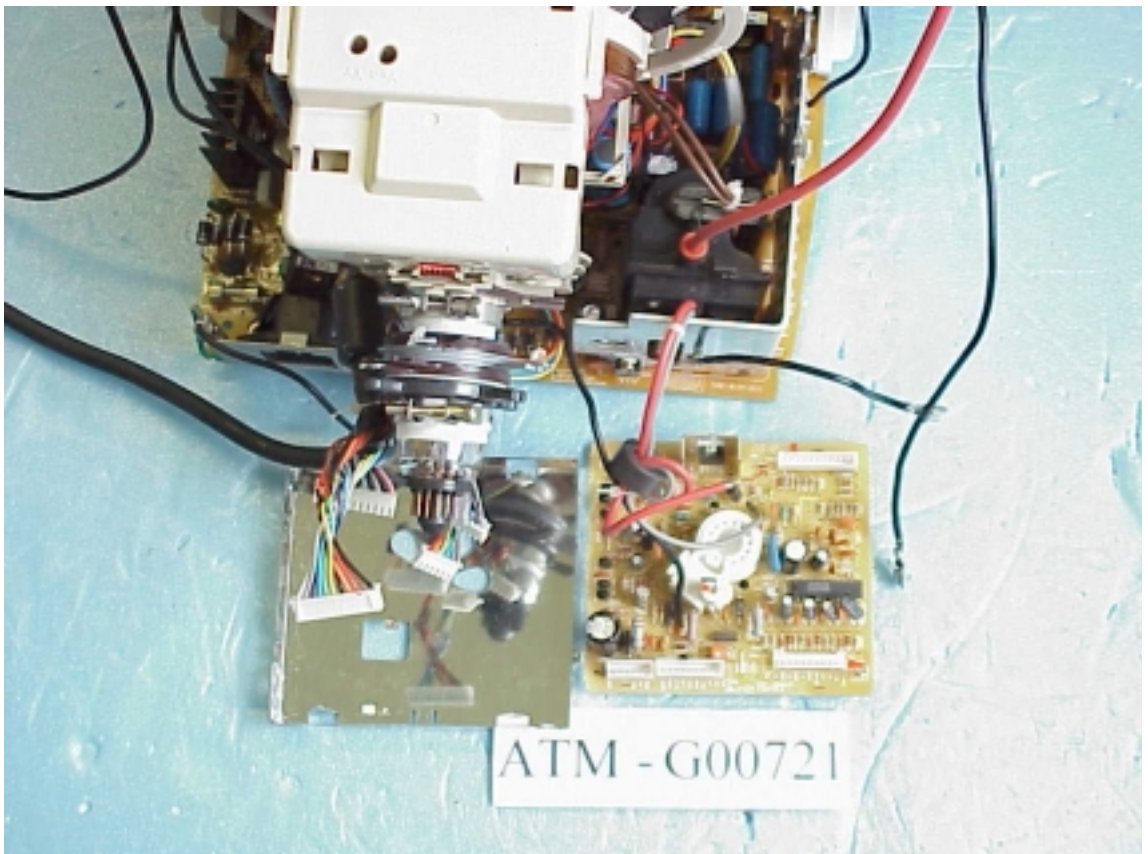


Figure 9  
Video Board (Component Side)

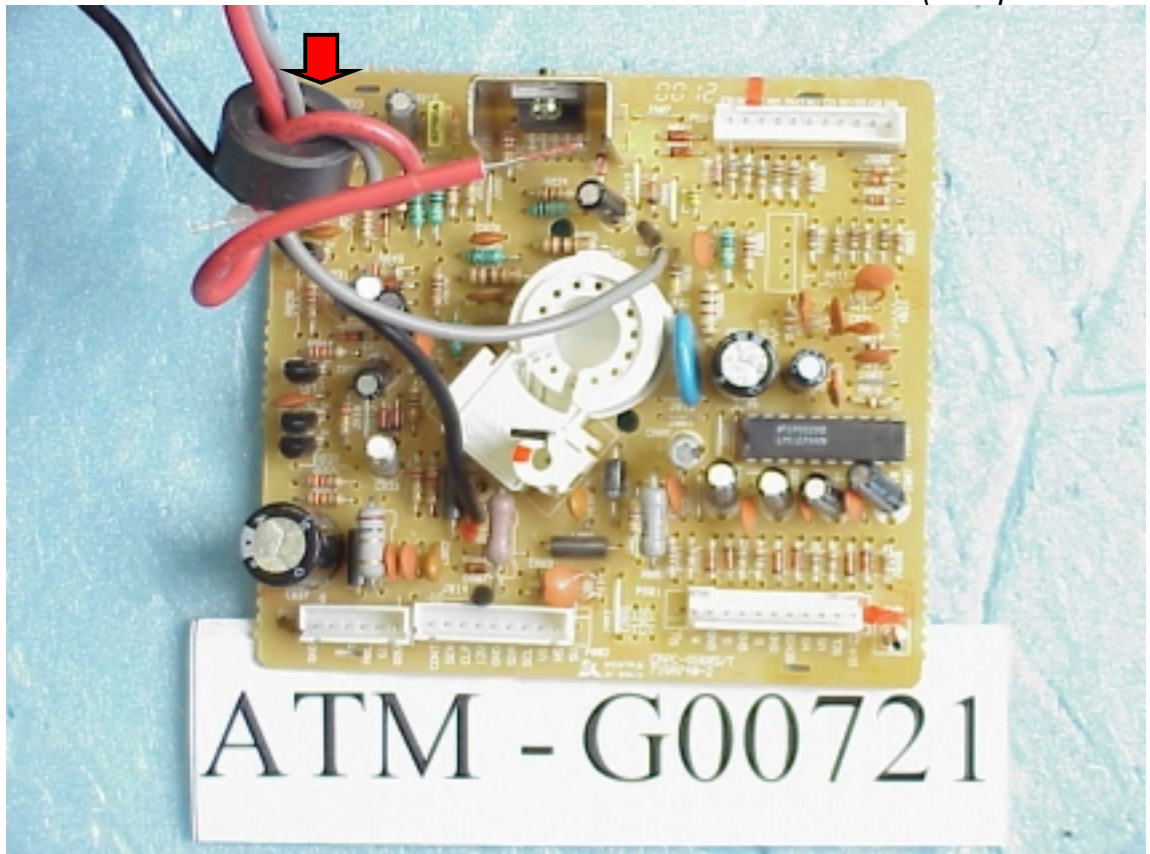


Figure 10  
Video Board (Foil Side)

