

Dual Mode CPE7000 Indoor Quick installation Guide



Federal Communication Commission Interference Statement

This equipment has been tested and found to comply with the limits for a Class B digital device, pursuant to Part 15 of the FCC Rules. These limits are designed to provide reasonable protection against harmful interference in a residential installation. This equipment generates uses and can radiate radio frequency energy and, if not installed and used in accordance with the instructions, may cause harmful interference to radio communications. However, there is no guarantee that interference will not occur in a particular installation. If this equipment does cause harmful interference to radio or television reception, which can be determined by turning the equipment off and on, the user is encouraged to try to correct the interference by one of the following measures:

- Reorient or relocate the receiving antenna.
- Increase the separation between the equipment and receiver.
- Connect the equipment into an outlet on a circuit different from that to which the receiver is connected.
- Consult the dealer or an experienced radio/TV technician for help.

FCC Caution: Any changes or modifications not expressly approved by the party responsible for compliance could void the user's authority to operate this equipment.

This device complies with Part 15 of the FCC Rules. Operation is subject to the following two conditions: (1) This device may not cause harmful interference, and (2) this device must accept any interference received, including interference that may cause undesired operation.

IMPORTANT NOTE:

Radiation Exposure Statement:

This equipment complies with FCC radiation exposure limits set forth for an uncontrolled environment. This equipment should be installed and operated with minimum distance 20cm between the radiator & your body.

This transmitter must not be co-located or operating in conjunction with any other antenna or transmitter.

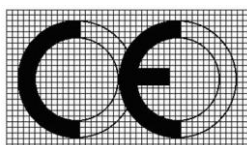
Country Code selection feature to be disabled for products marketed to the US/CANADA




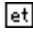
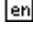

Europe – EU Declaration of Conformity

This device complies with the essential requirements of the R&TTE Directive 1999/5/CE. The following test methods have been applied in order to prove presumption of conformity with the essential requirements of the R&TTE Directive 1999/5/CE:

- EN 60950-1 : 2006 + A11 + A1 + A12 + A2: 2013
- EN62311 : 2008
- EN 300 328 V1.8.1: 2012
- EN 301 489-1 V1.9.2: 2011
- EN 301 489-17 V2.2.1: 2012

In Italy the end-user should apply for a license at the national spectrum authorities in order to obtain authorization to use the device for setting up outdoor radio links and/or for supplying public access to telecommunications and/or network services.



 Český [Czech]	<i>[Jméno výrobce]</i> tímto prohlašuje, že tento <i>[typ zařízení]</i> je ve shodě se základními požadavky a dalšími příslušnými ustanoveními směrnice 1999/5/ES.
 Dansk [Danish]	Undertegnede <i>[fabrikantens navn]</i> erklærer herved, at følgende udstyr <i>[udstyrets typebetegnelse]</i> overholder de væsentlige krav og øvrige relevante krav i direktiv 1999/5/EF.
 Deutsch [German]	Hiermit erkläre <i>[Name des Herstellers]</i> , dass sich das Gerät <i>[Gerätetyp]</i> in Übereinstimmung mit den grundlegenden Anforderungen und den übrigen einschlägigen Bestimmungen der Richtlinie 1999/5/EG befindet.
 Eesti [Estonian]	Käesolevaga kinnitab <i>[tootja nimi = name of manufacturer]</i> seadme <i>[seadme tüüp = type of equipment]</i> vastavust direktiivi 1999/5/EÜ põhinõuetele ja nimetatud direktiivist tulenevatele teistele asjakohastele sätetele.
 English	Hereby, <i>[name of manufacturer]</i> , declares that this <i>[type of equipment]</i> is in compliance with the essential requirements and other relevant provisions of Directive 1999/5/EC.
 Español [Spanish]	Por medio de la presente <i>[nombre del fabricante]</i> declara que el <i>[clase de equipo]</i> cumple con los requisitos esenciales y cualesquiera otras disposiciones aplicables o exigibles de la Directiva 1999/5/CE.

 Ελληνική [Greek]	ΜΕ ΤΗΝ ΠΑΡΟΥΣΑ [<i>name of manufacturer</i>] ΔΗΛΩΝΕΙ ΟΤΙ [<i>type of equipment</i>] ΣΥΜΜΟΡΦΩΝΕΤΑΙ ΠΡΟΣ ΤΙΣ ΟΥΣΙΩΔΕΙΣ ΑΠΑΙΤΗΣΕΙΣ ΚΑΙ ΤΙΣ ΛΟΙΠΕΣ ΣΧΕΤΙΚΕΣ ΔΙΑΤΑΞΕΙΣ ΤΗΣ ΟΔΗΓΙΑΣ 1999/5/ΕΚ.
 Français [French]	Par la présente [<i>nom du fabricant</i>] déclare que l'appareil [<i>type d'appareil</i>] est conforme aux exigences essentielles et aux autres dispositions pertinentes de la directive 1999/5/CE.
 Italiano [Italian]	Con la presente [<i>nome del costruttore</i>] dichiara che questo [<i>tipo di apparecchio</i>] è conforme ai requisiti essenziali ed alle altre disposizioni pertinenti stabilite dalla direttiva 1999/5/CE.
Latviski [Latvian]	Ar šo [<i>name of manufacturer / izgatavotāja nosaukums</i>] deklarē, ka [<i>type of equipment / iekārtas tips</i>] atbilst Direktīvas 1999/5/ΕΚ būtiskajām prasībām un citiem ar to saistītajiem noteikumiem.
Lietuvių [Lithuanian]	Šiuo [<i>manufacturer name</i>] deklaruoja, kad šis [<i>equipment type</i>] atitinka esminius reikalavimus ir kitas 1999/5/EB Direktyvos nuostatas.
 Nederlands [Dutch]	Hierbij verklaart [<i>naam van de fabrikant</i>] dat het toestel [<i>type van toestel</i>] in overeenstemming is met de essentiële eisen en de andere relevante bepalingen van richtlijn 1999/5/EG.
 Malti [Maltese]	Hawnhekk, [<i>isem tal-manifattur</i>], jiddikjara li dan [<i>il-mudel tal-prodott</i>] jikkonforma mal-ħtiġijiet essenzjali u ma provvedimenti oħrajn relevanti li hemm fid-Dirrettiva 1999/5/EC.
 Magyar [Hungarian]	Alulírott, [<i>gyártó neve</i>] nyilatkozom, hogy a [<i>... típus</i>] megfelel a vonatkozó alapvető követelményeknek és az 1999/5/EC irányelv egyéb előírásainak.
 Polski [Polish]	Niniejszym [<i>nazwa producenta</i>] oświadczam, że [<i>nazwa wyrobu</i>] jest zgodny z zasadniczymi wymogami oraz pozostałymi stosownymi postanowieniami Dyrektywy 1999/5/EC.
 Português [Portuguese]	[<i>Nome do fabricante</i>] declara que este [<i>tipo de equipamento</i>] está conforme com os requisitos essenciais e outras disposições da Directiva 1999/5/CE.
 Slovensko [Slovenian]	[<i>Ime proizvajalca</i>] izjavlja, da je ta [<i>tip opreme</i>] v skladu z bistvenimi zahtevami in ostalimi relevantnimi določili direktive 1999/5/ES.
Slovensky [Slovak]	[<i>Meno výrobcu</i>] týmto vyhlasuje, že [<i>typ zariadenia</i>] spĺňa základné požiadavky a všetky príslušné ustanovenia Smernice 1999/5/ES.
 Suomi [Finnish]	[<i>Valmistaja = manufacturer</i>] vakuuttaa täten että [<i>type of equipment = laitteen tyyppimerkintä</i>] tyyppinen laite on direktiivin 1999/5/EY oleellisten vaatimusten ja sitä koskevien direktiivin muiden ehtojen mukainen.

Industry Canada statement:

This device complies with Industry Canada's licence-exempt RSSs. Operation is subject to the following two conditions:

(1) This device may not cause interference; and (2) This device must accept any interference, including interference that may cause undesired operation of the device.

Cet appareil est conforme aux CNR exemptes de licence d'Industrie Canada. Son fonctionnement est soumis aux deux conditions suivantes: (1) Ce dispositif ne peut causer d'interférences; et (2) Ce dispositif doit accepter toute interférence, y compris les interférences qui peuvent causer un mauvais fonctionnement de l'appareil.

Radiation Exposure Statement:

This equipment complies with IC radiation exposure limits set forth for an uncontrolled environment. This equipment should be installed and operated with minimum distance 20cm between the radiator & your body.

Déclaration d'exposition aux radiations:

Cet équipement est conforme aux limites d'exposition aux rayonnements IC établies pour un environnement non contrôlé. Cet équipement doit être installé et utilisé avec un minimum de 20 cm de distance entre la source de rayonnement et votre corps.

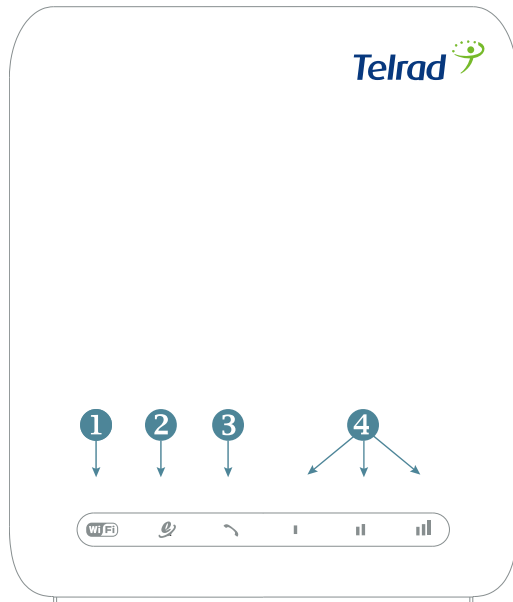
Copyright





This DOCUMENT is copyrighted with all rights reserved. No part of this publication may be reproduced, transmitted, transcribed, stored in a retrieval system, or translated into any language in any form by any means without the written permission of Telnet.

Notice

Telnet reserves the right to change specifications without prior notice. While the information in this document has been compiled with great care, it may not be deemed an assurance of product characteristics. Telnet shall be liable only to the degree specified in the terms of sale and delivery. The reproduction and distribution of the documentation and software supplied with this product and the use of its contents is subject to written authorization from Telnet

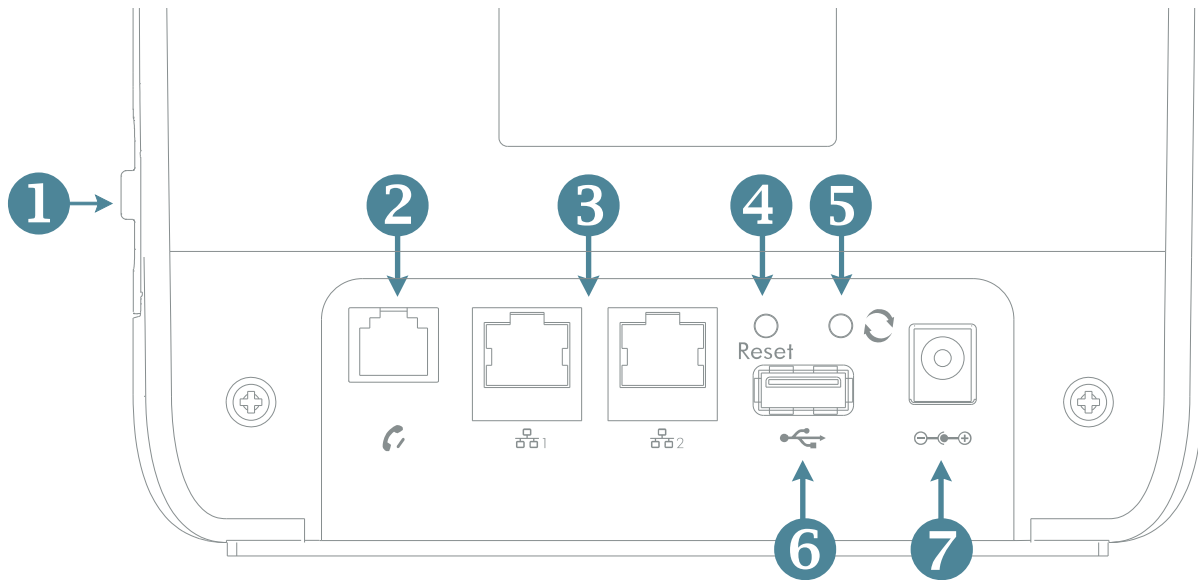
CPE7000 Indoor LED Indicators



Num.	Type	Logo	Color	Action	Description
1	Power & Wi-Fi		Blue	Solid ON	Power on (System is booting , or WiFi is disabled)
			Purple	Solid ON	WiFi is enabled
			Purple	Blinking	WiFi is transmitting data
2	WAN		Blue	Blinking	LTE is connecting
			Blue	Solid ON	LTE is connected
			Red	Blinking	WiMAX is connecting
			Red	Solid ON	WiMAX is connected
3	VoIP		Blue	Solid ON	VoIP Registered
			Blue	Blinking	Incoming call ringing
			Red	Solid ON	Off-hook/ Busy
			Red	Blinking	New incoming call during conversation
			Purple	Blinking	Incoming voice mail waiting
			OFF		VoIP not registered / VoIP disabled
4	Signal Strength		Green	Solid ON	Display signal strength 1 LED: $0 \leq \text{CINR} < 8$ 2 LED: $8 \leq \text{CINR} < 24$ 3 LED: $24 \leq \text{CINR}$
			OFF		No signal

CPE7000 Indoor Connectors:

Interface Connection

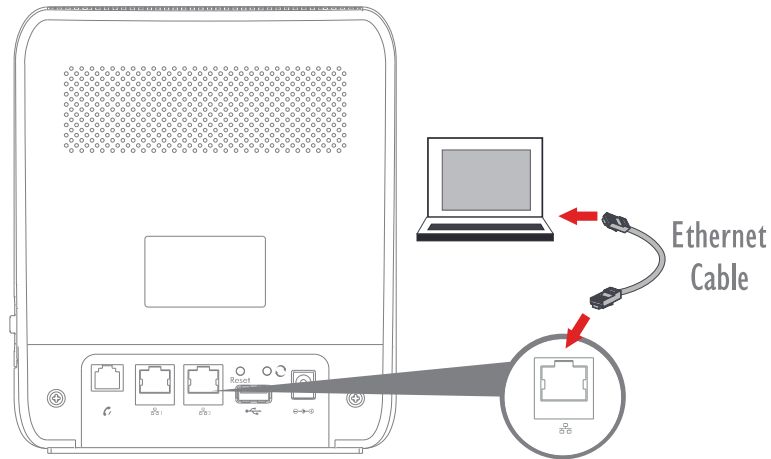


1. SIM card Slot Cover: Open the cover and insert SIM card into the slot with right direction.
2. Telephone Port (RJ-11): Connect your telephone to Indoor CPE with a RJ-11 telephone cable.
3. LAN Port (RJ-45): Port for connecting PC, hub and switch or other network equipment by RJ-45 Ethernet cable.
4. Reset Button: Press “Reset” button less than 5 seconds to reboot the device. Or press and hold the Reset button 10 seconds to set router to factory default settings.
5. WPS Button: Press “WPS” button, router can easily connects to Wi-Fi client which also support WPS function.
6. USB: Connect USB equipment by standard USB cable
7. Power Adapter Socket (DC-12V): Plug adapter DC pin into this socket.

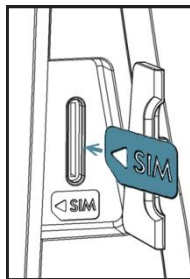
Installation

Please follow the steps below to install the device:

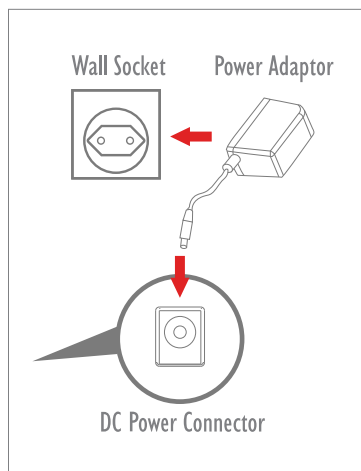
Step1: Connect the device **LAN** port to your PC with a RJ-45 Ethernet cable.



Step2: Insert SIM card into the device with right direction.



Step3: Insert the power cord into the LTE Indoor CPE's **DC-12V** power jack; and insert the plug into power outlet.



Step4: Switch ON the power. The device will start the booting process. After a few seconds, the LED lights will start blinking.

Easy Setup

Please follow the steps below to configure your device through the web interface:

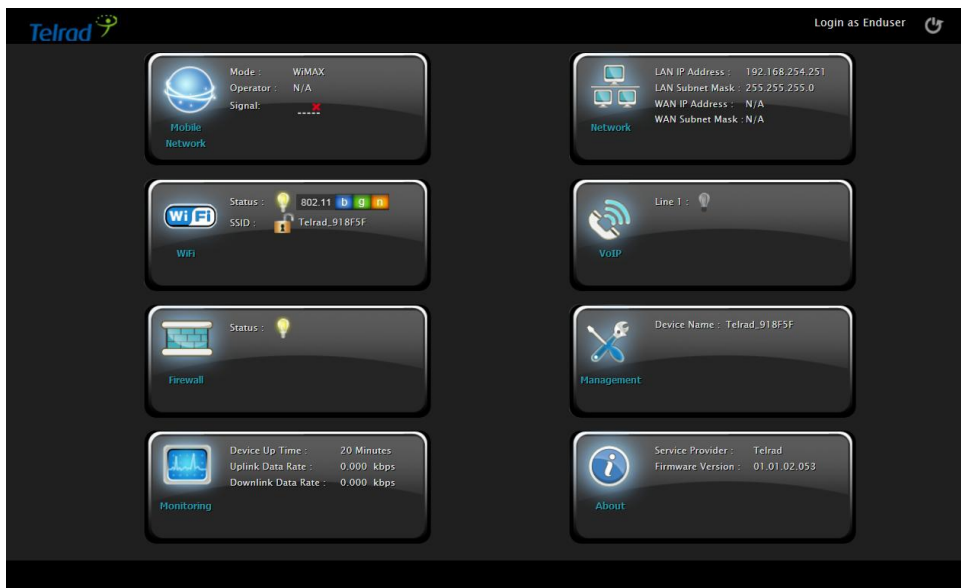
Step1: Open the Web browser (Internet Explorer) and enter the default IP address of the IDU

CPE : **http://192.168.254.251**

Step2: Enter IDU administrator login username/password to access the web management interface. The default username/password is **admin/admin**.

Step3: The page displays in your browser after login; you can simply configure the device settings.

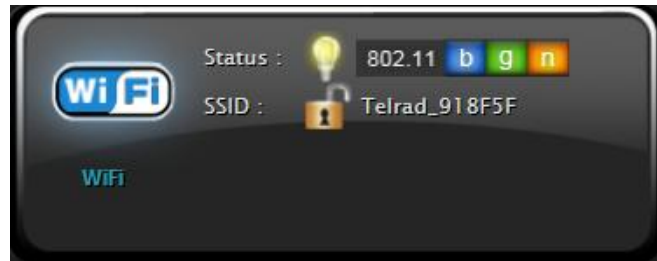
Step4: Signal Strength indicator on the upper-left corner of webpage. There are two modes to show different connection status.



	Mode:	LTE or WiMAX
	Operator:	Either APN Name (LTE mode) or BSID (WiMAX mode)
	Signal:	 (More bars indicate better signal) -----X (Disconnect, no signal)

Wi-Fi Setting

Step1: Select WIFI from main menu. Then screen will display the default setting of SSID, radio channel, working mode, WiFi MAC and SSID broadcast.



Step2: Specify a radio channel, working mode, bandwidth in Settings page.

Step3: Specify a SSID (Service Set ID), SSID broadcast and Security in Multiple SSID page.