



P/N

RF CARD

PC1729-10

C.S.

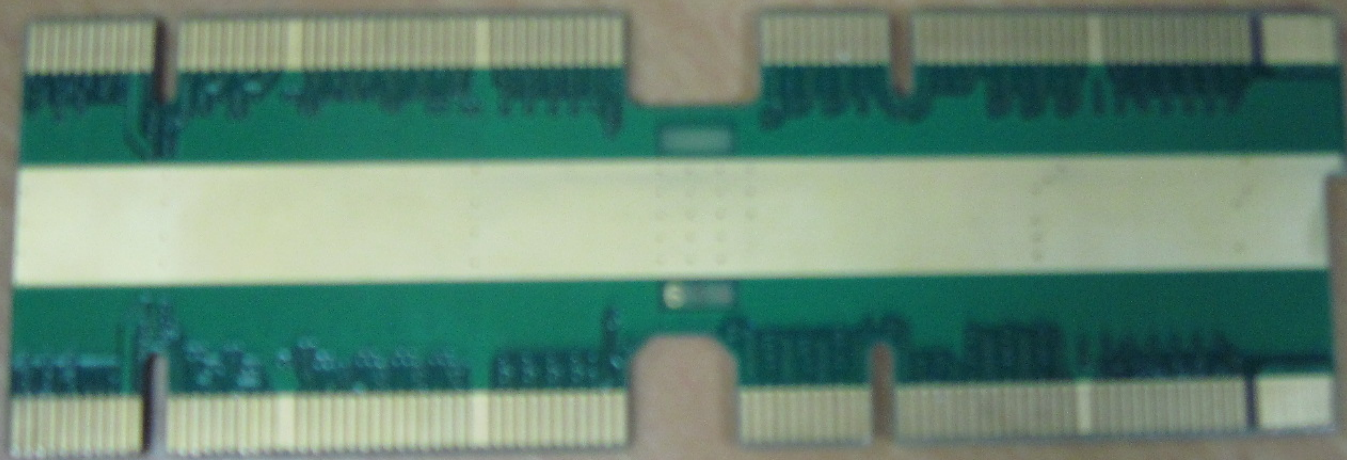
S/N

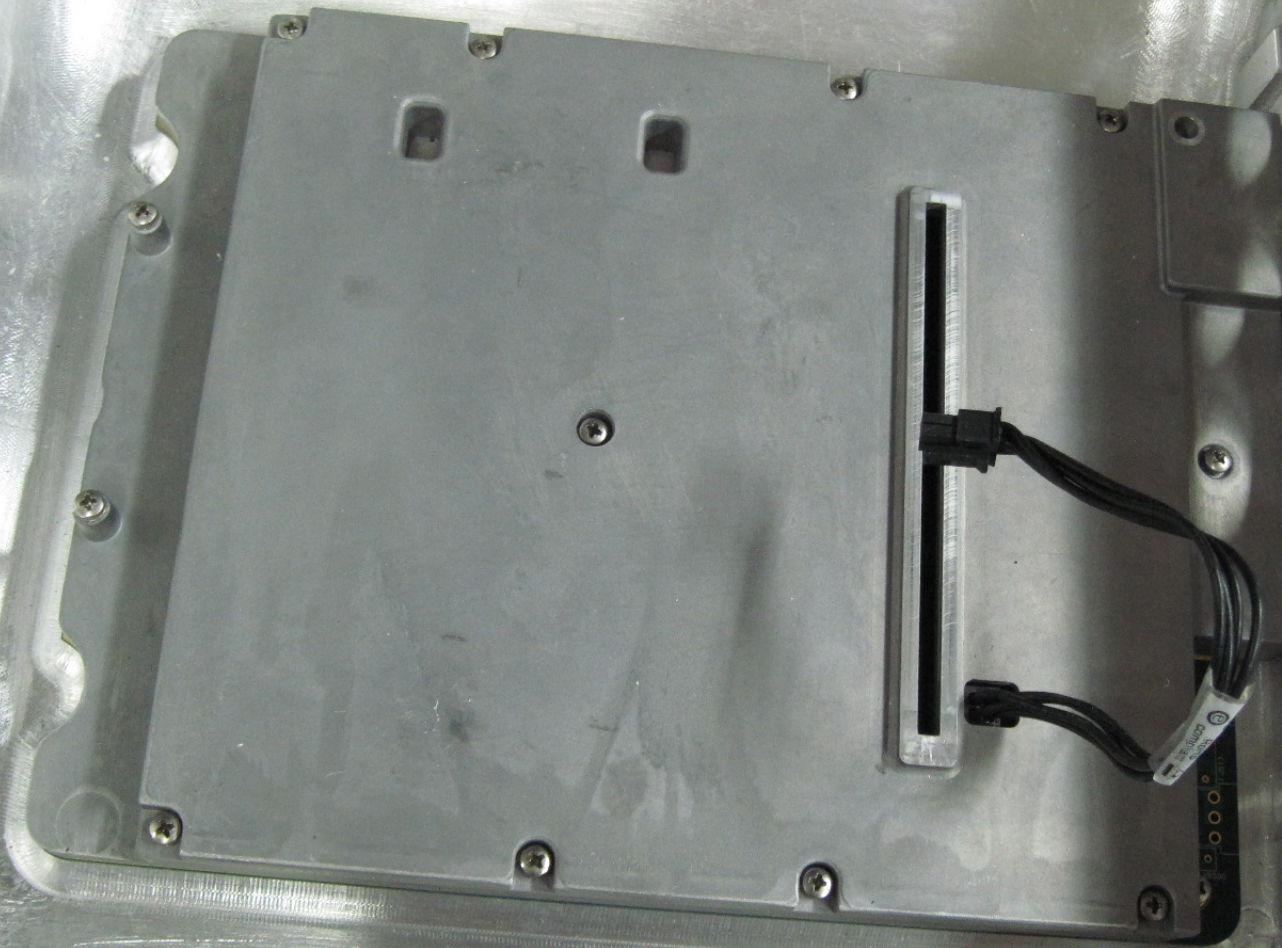
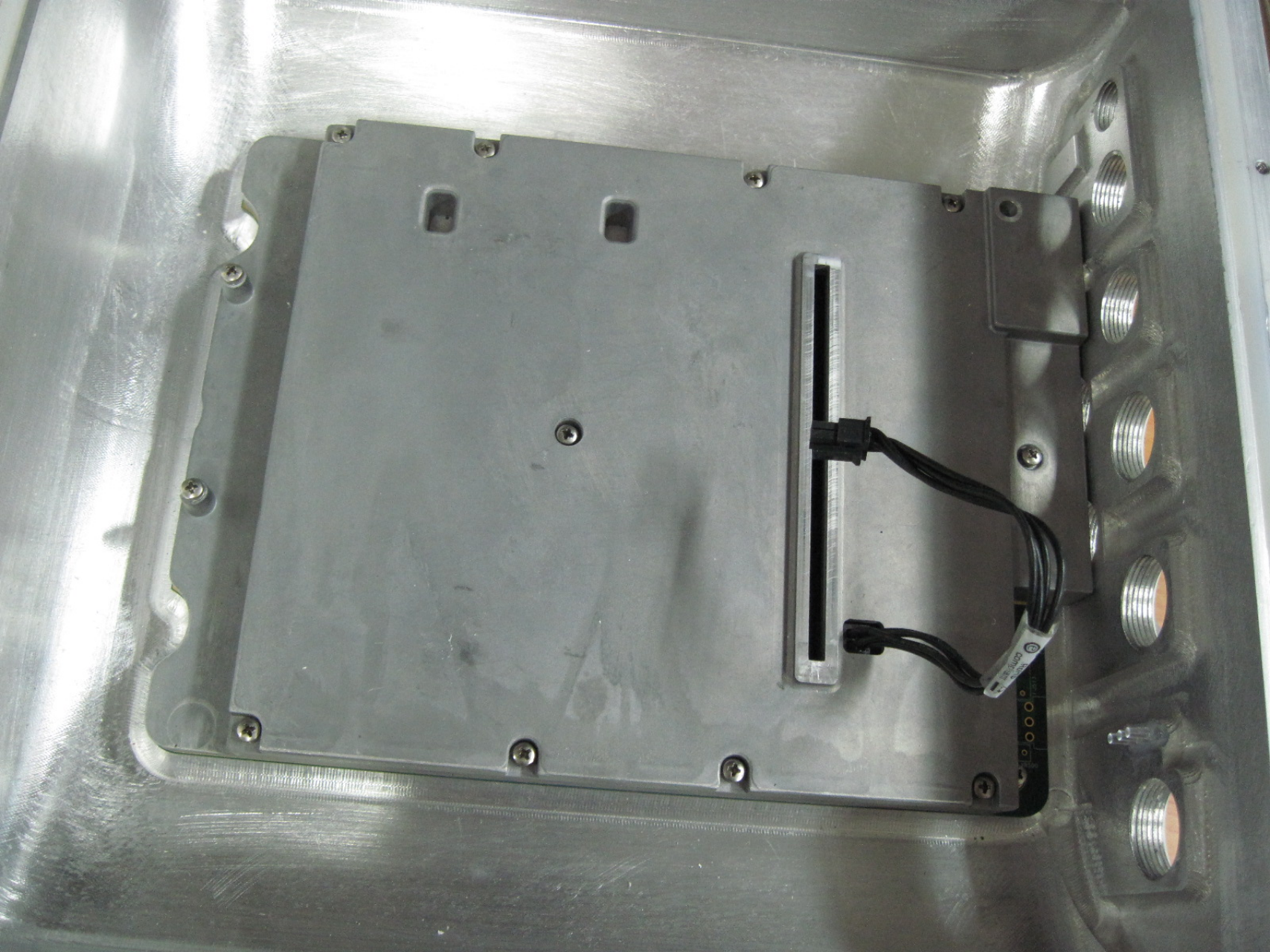
BB CARD

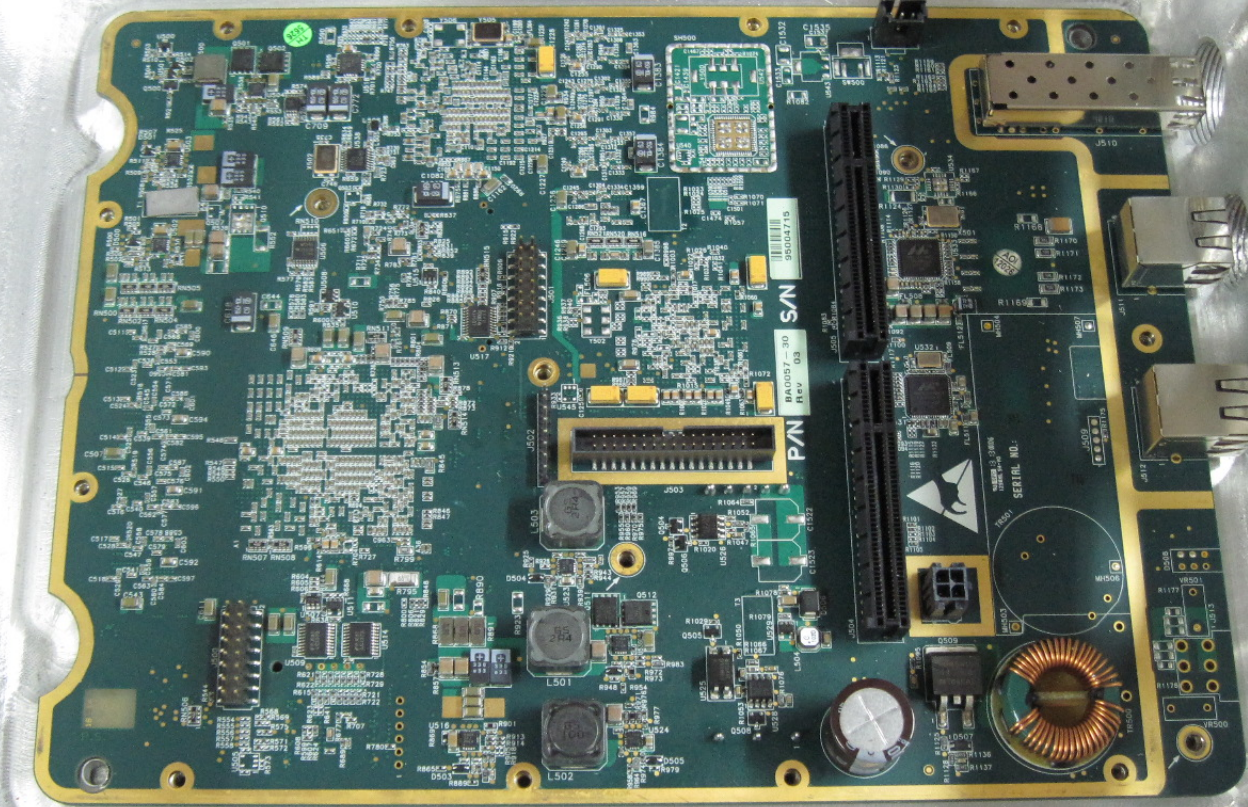
E204400
W01 94V-0

4413 W01









PAN BA00D7-30 S/N 9D04715
REV. 05B



SERIAL NO.



THRU HOLE

REF. DESIG.

Q15

Q16

Q17

Q18

Q19

Q20

Q21

Q22

Q23

Q24

Q25

Q26

Q27

Q28

Q29

Q30

Q31

Q32

Q33

Q34

Q35

Q36

Q37

Q38

Q39

Q40

Q41

Q42

Q43

Q44

Q45

Q46

Q47

Q48

Q49

Q50

Q51

Q52

Q53

Q54

Q55

Q56

Q57

Q58

Q59

Q60

Q61

Q62

Q63

Q64

Q65

Q66

Q67

Q68

Q69

Q70

Q71

Q72

Q73

Q74

Q75

Q76

Q77

Q78

Q79

Q80

Q81

Q82

Q83

Q84

Q85

Q86

Q87

Q88

Q89

Q90

Q91

Q92

Q93

Q94

Q95

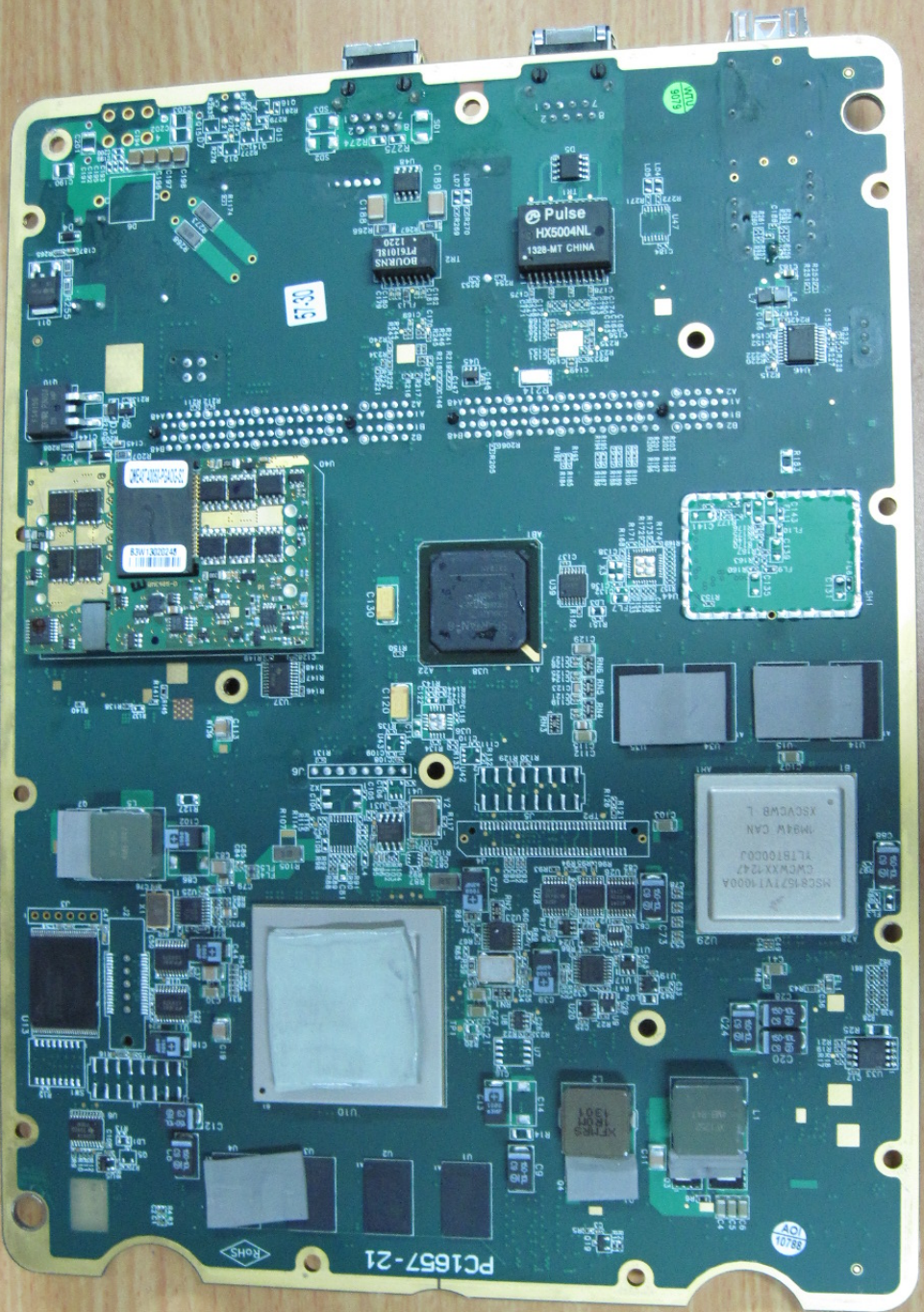
Q96

Q97

Q98

Q99

Q100



PC1657-21



40 0701

MSC89571V1-1000A
CWCXXX1247
YL161000C03
1M94W CAN
XSCCMB L

1301
XPT7MS

1301
XPT7MS

1301
XPT7MS

1301
XPT7MS

1301
XPT7MS

1301
XPT7MS

1301
XPT7MS

1301
XPT7MS

1301
XPT7MS

1301
XPT7MS

1301
XPT7MS

1301
XPT7MS

1301
XPT7MS

1301
XPT7MS

1301
XPT7MS

1301
XPT7MS

1301
XPT7MS

1301
XPT7MS

1301
XPT7MS

1301
XPT7MS

1301
XPT7MS

1301
XPT7MS

1301
XPT7MS

1301
XPT7MS

1301
XPT7MS

5300

1001200246

1001200246

1001200246

1001200246

1001200246

1001200246

1001200246

1001200246

1001200246

1001200246

1001200246

1001200246

1001200246

1001200246

1001200246

1001200246

1001200246

1001200246

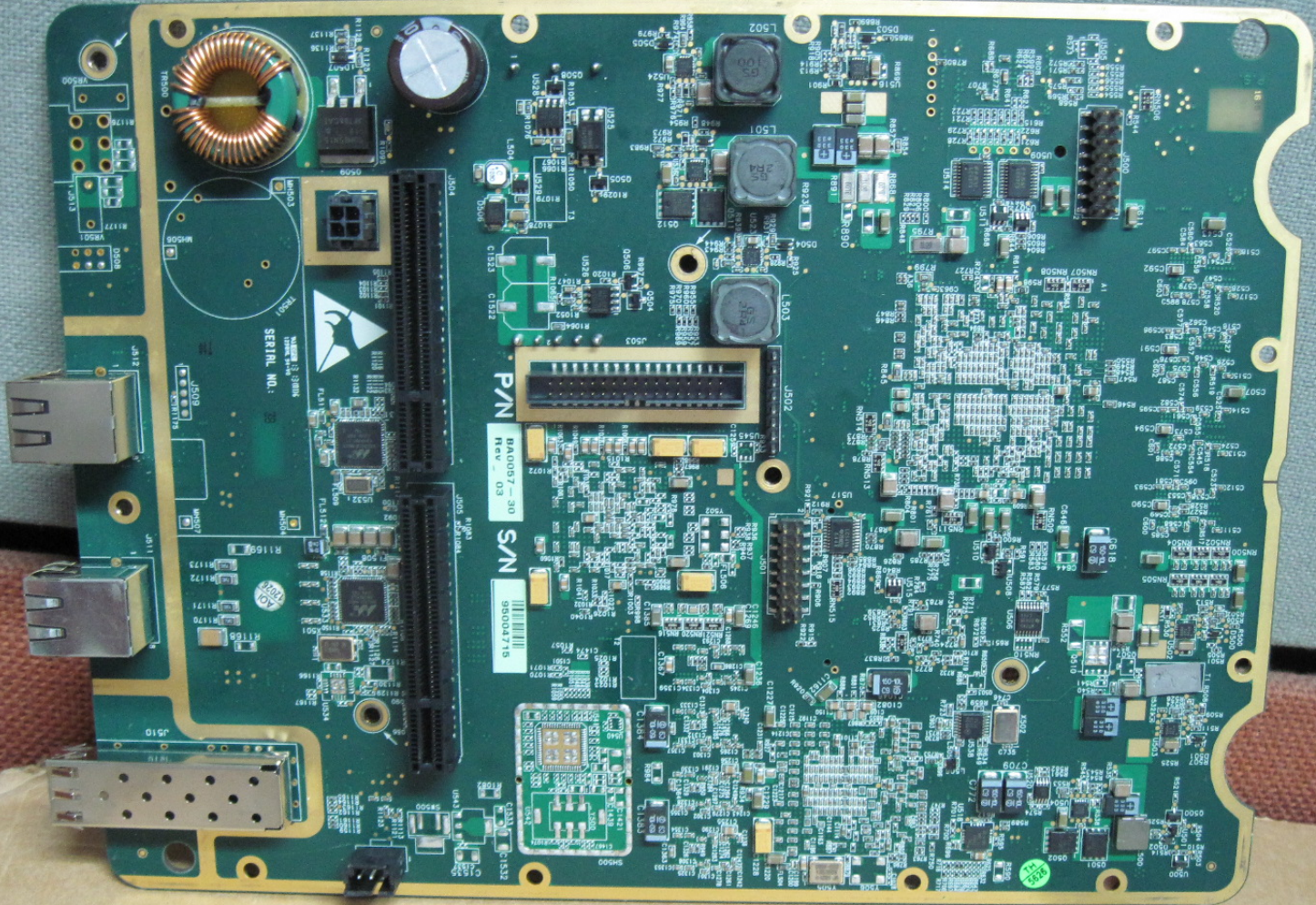
1001200246

1001200246

1001200246

1001200246





SERIAL NO. 2

BA0057-30
Rev. 03

S/N
98004715

REV. 03