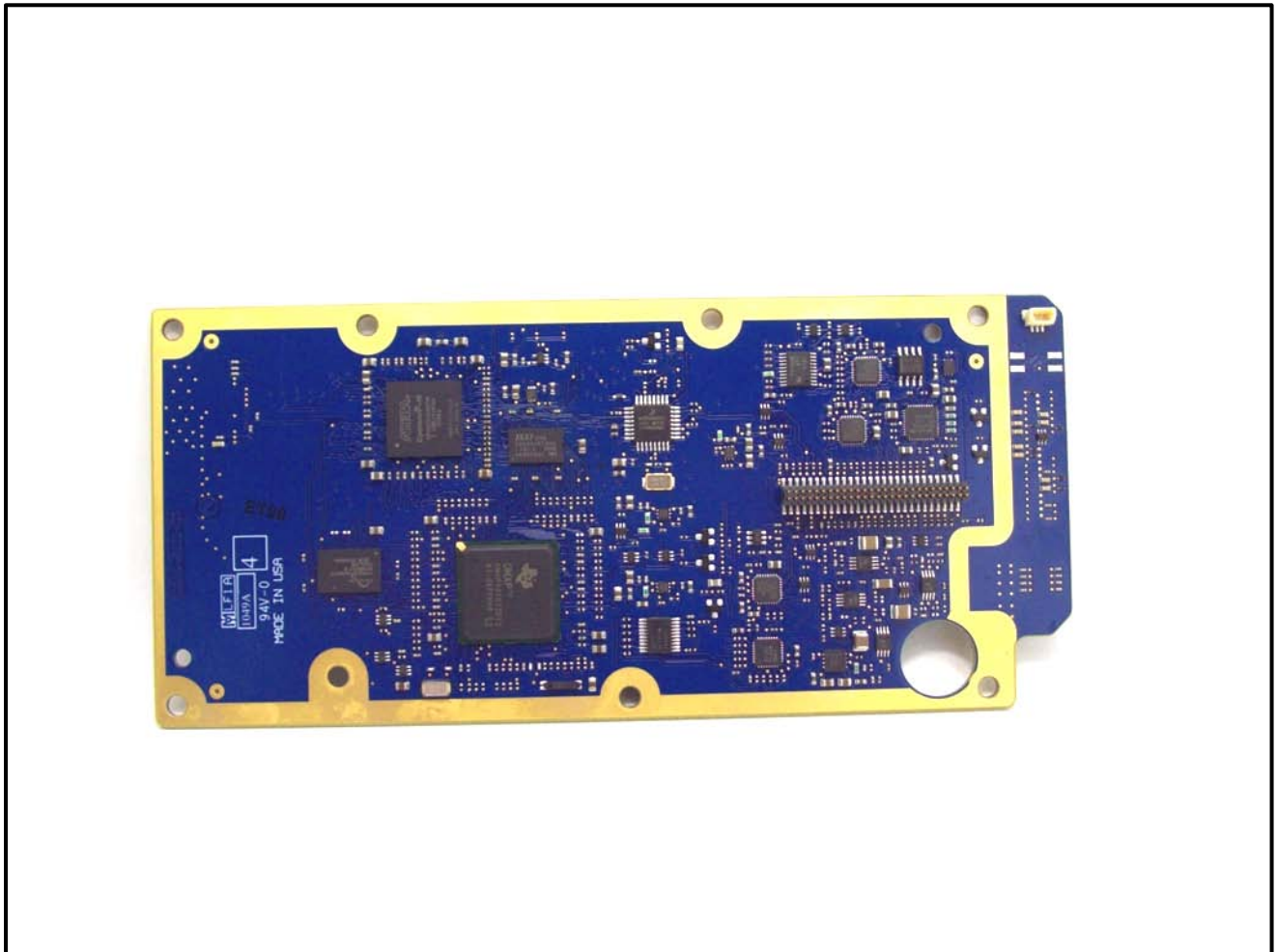


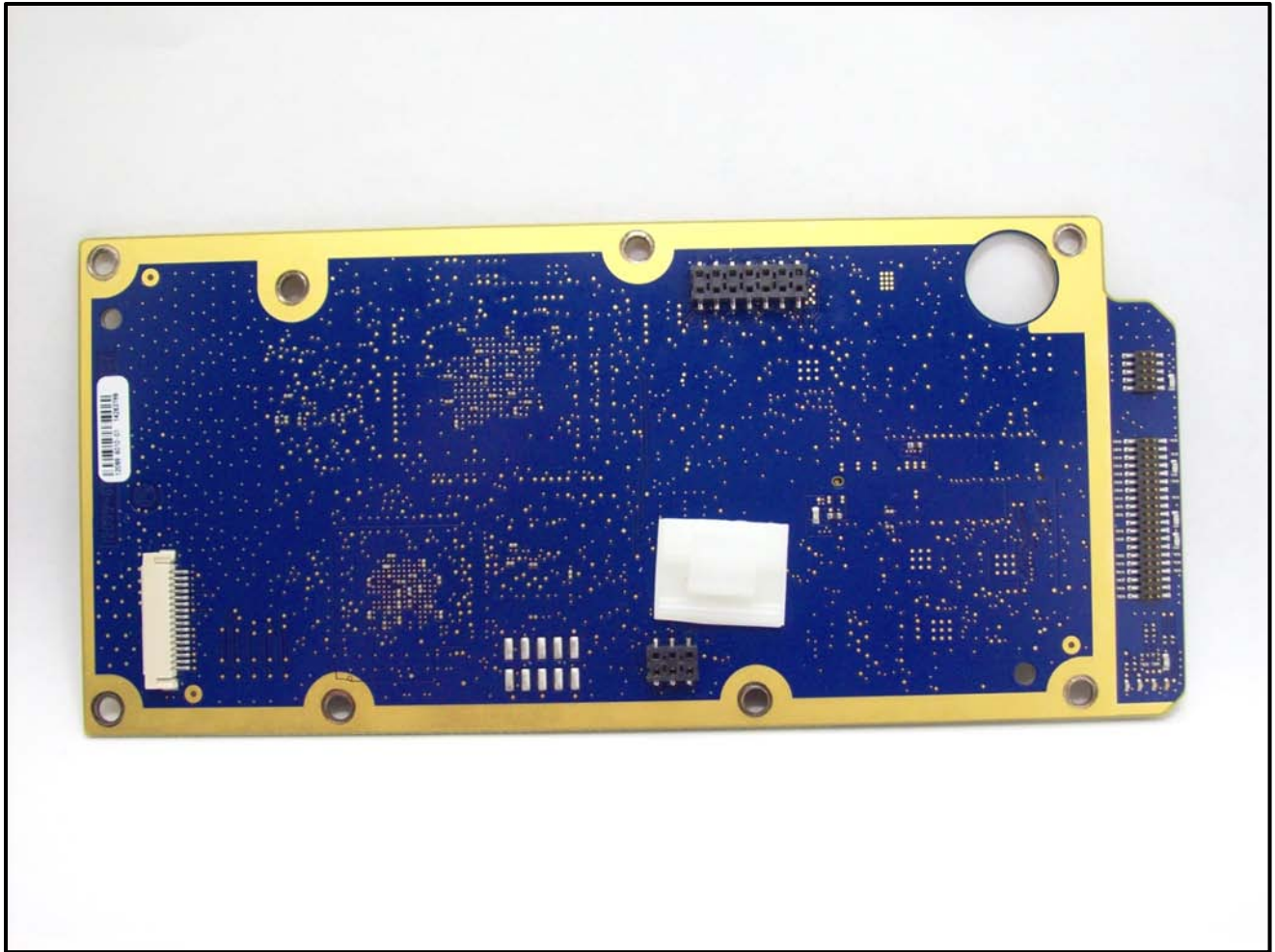
**XG-100M Internal Photographs**



**Photograph 1: Digital Board Front**

Rhein Tech Laboratories, Inc.  
360 Herndon Parkway, Ste. 1400  
Herndon, VA 20170  
<http://www.rheintech.com>

Client: Harris Corporation  
Model: XG-100M  
IDs: AQZ-XG-100M00/122D-XG100M00  
WO #: 2011028



**Photograph 2: Digital Board Back**

Rhein Tech Laboratories, Inc.  
360 Herndon Parkway, Ste. 1400  
Herndon, VA 20170  
<http://www.rheintech.com>

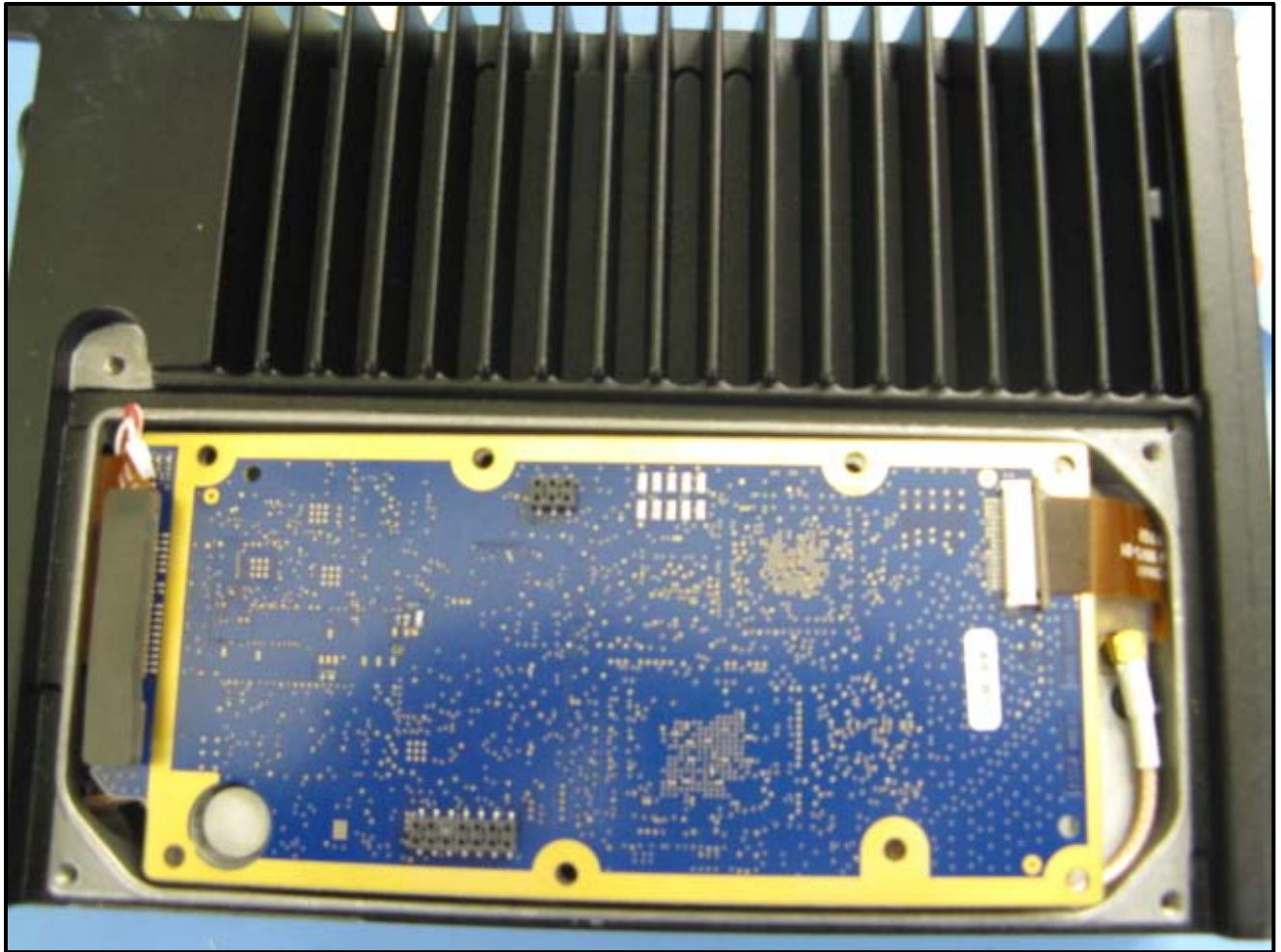
Client: Harris Corporation  
Model: XG-100M  
IDs: AQZ-XG-100M00/122D-XG100M00  
WO #: 2011028



**Photograph 3: Digital Housing**

Rhein Tech Laboratories, Inc.  
360 Herndon Parkway, Ste. 1400  
Herndon, VA 20170  
<http://www.rheintech.com>

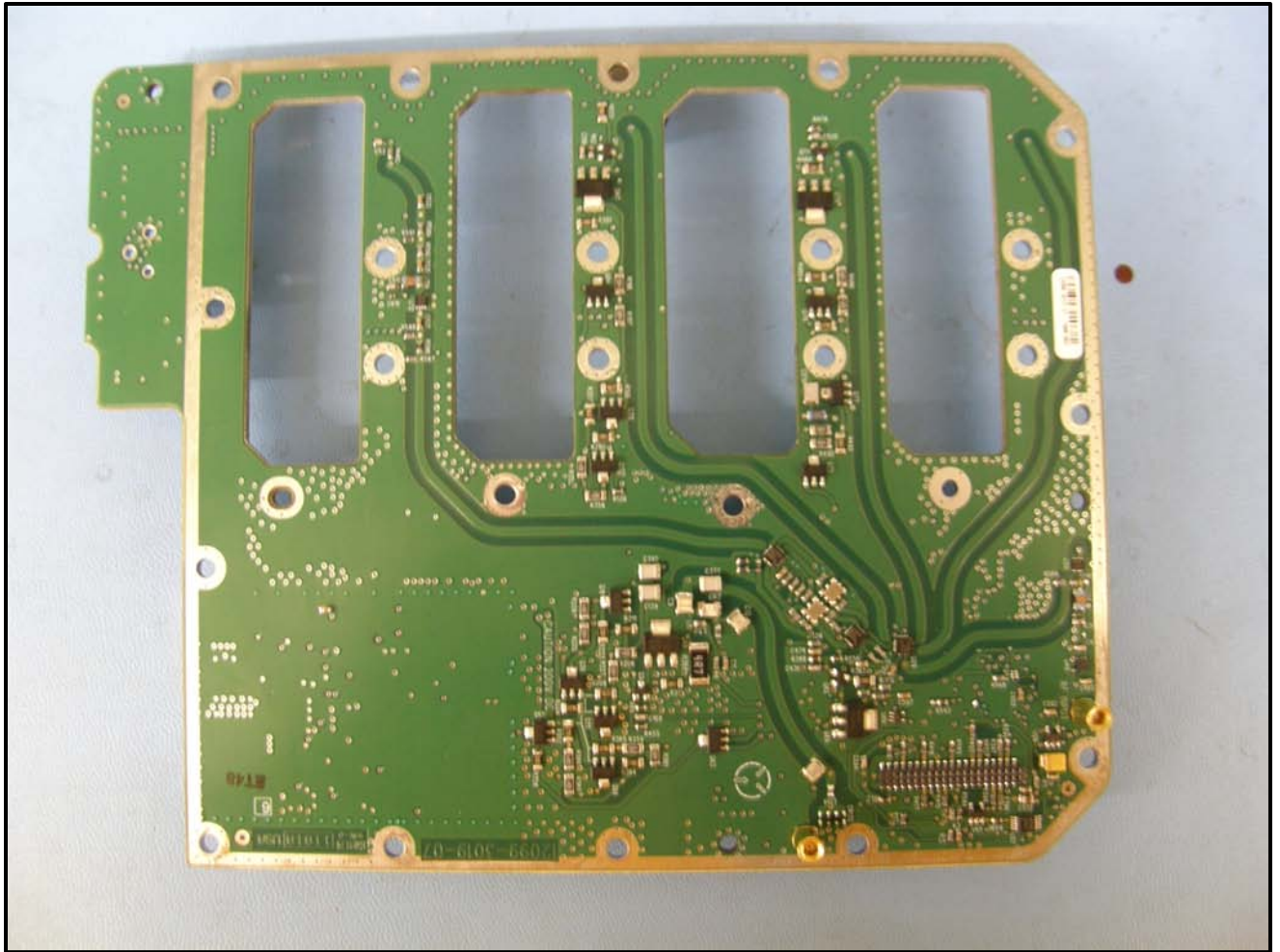
Client: Harris Corporation  
Model: XG-100M  
IDs: AQZ-XG-100M00/122D-XG100M00  
WO #: 2011028



**Photograph 4: Digital Board Mounted**

Rhein Tech Laboratories, Inc.  
360 Herndon Parkway, Ste. 1400  
Herndon, VA 20170  
<http://www.rheintech.com>

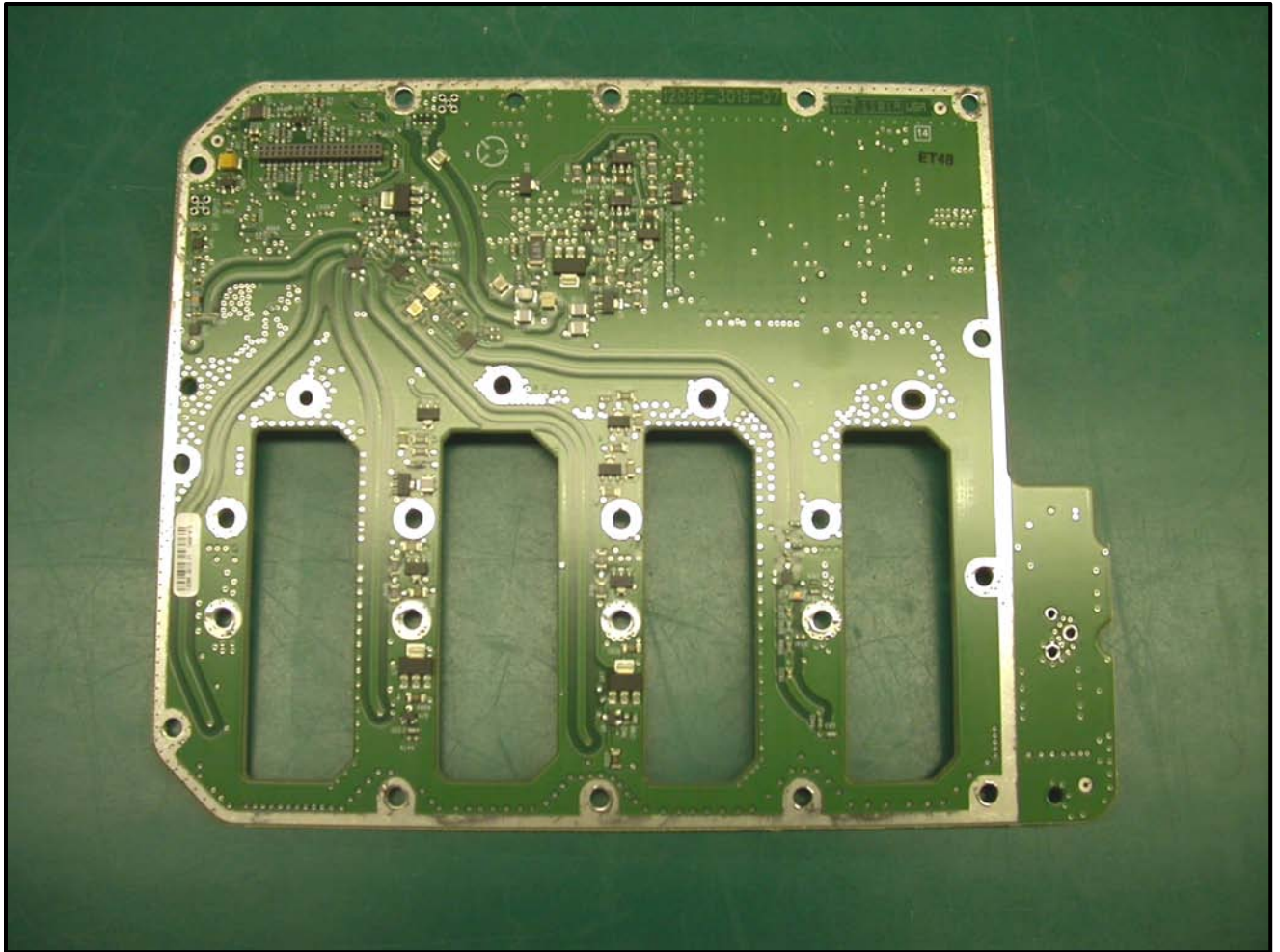
Client: Harris Corporation  
Model: XG-100M  
IDs: AQZ-XG-100M00/122D-XG100M00  
WO #: 2011028



Photograph 5: PA Board Front

Rhein Tech Laboratories, Inc.  
360 Herndon Parkway, Ste. 1400  
Herndon, VA 20170  
<http://www.rheintech.com>

Client: Harris Corporation  
Model: XG-100M  
IDs: AQZ-XG-100M00/122D-XG100M00  
WO #: 2011028



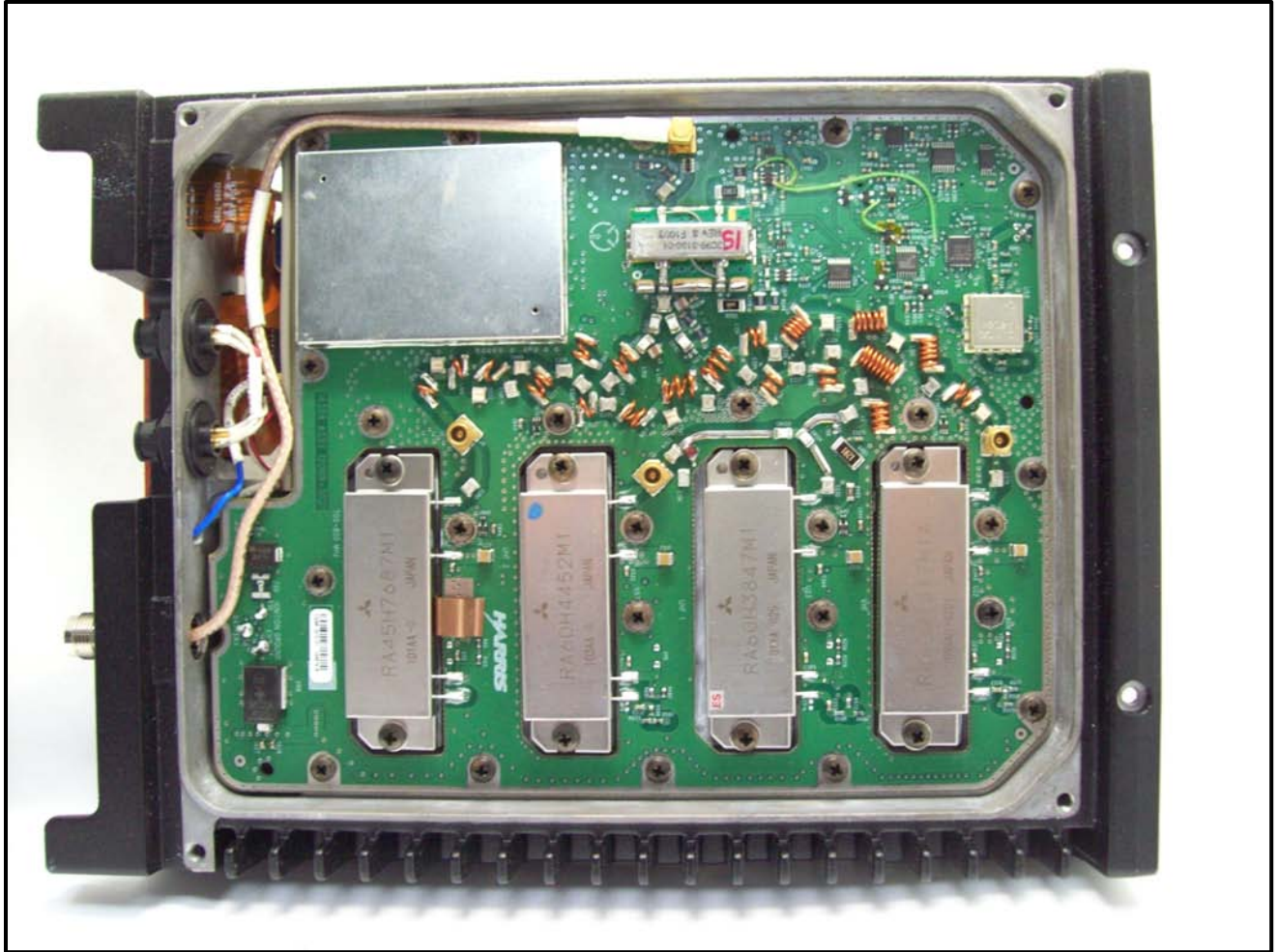
Photograph 6: PA Board Back

Rhein Tech Laboratories, Inc.  
360 Herndon Parkway, Ste. 1400  
Herndon, VA 20170  
<http://www.rheintech.com>

Client: Harris Corporation  
Model: XG-100M  
IDs: AQZ-XG-100M00/122D-XG100M00  
WO #: 2011028

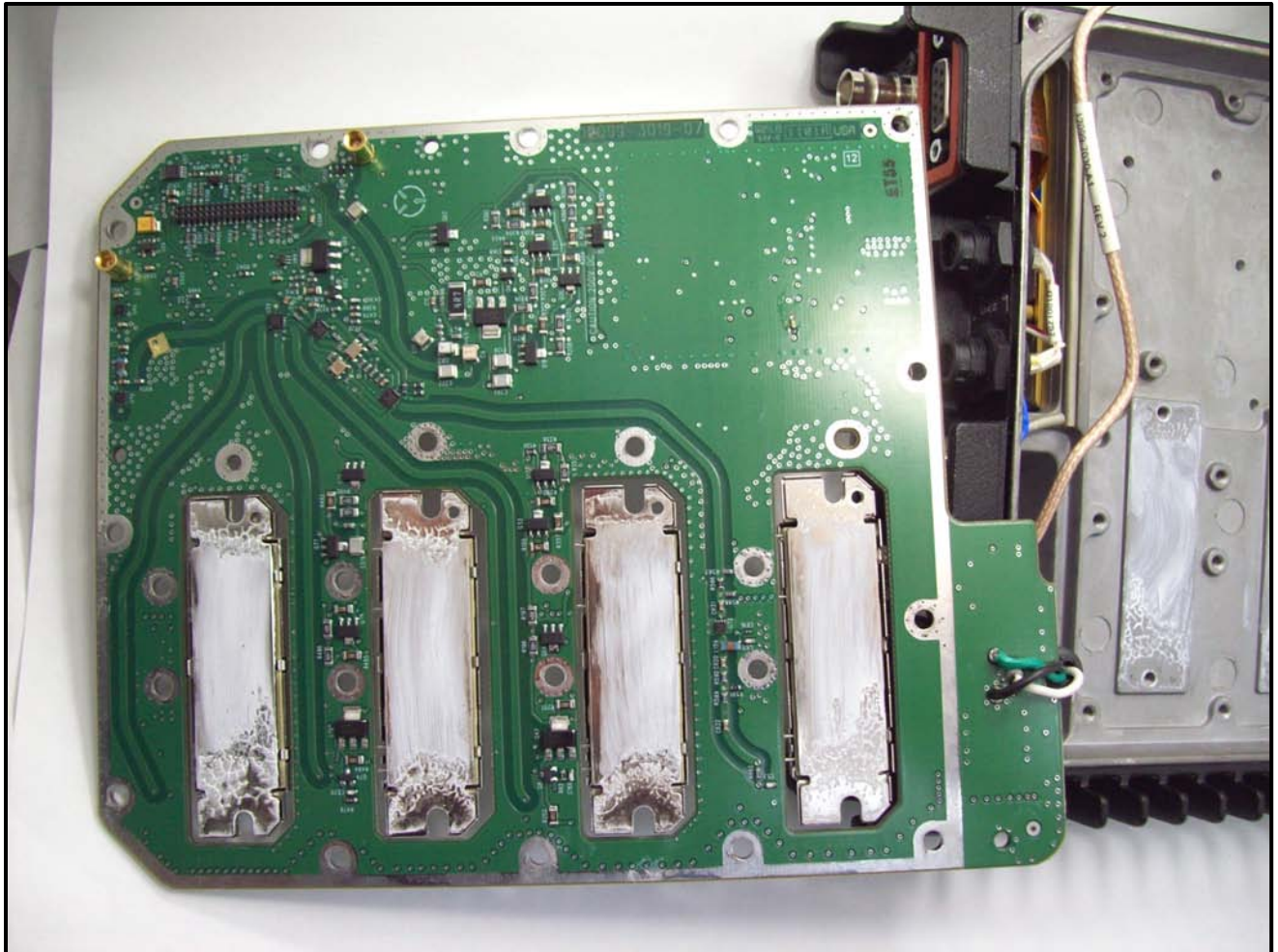


**Photograph 7: PA Mobile Housing**

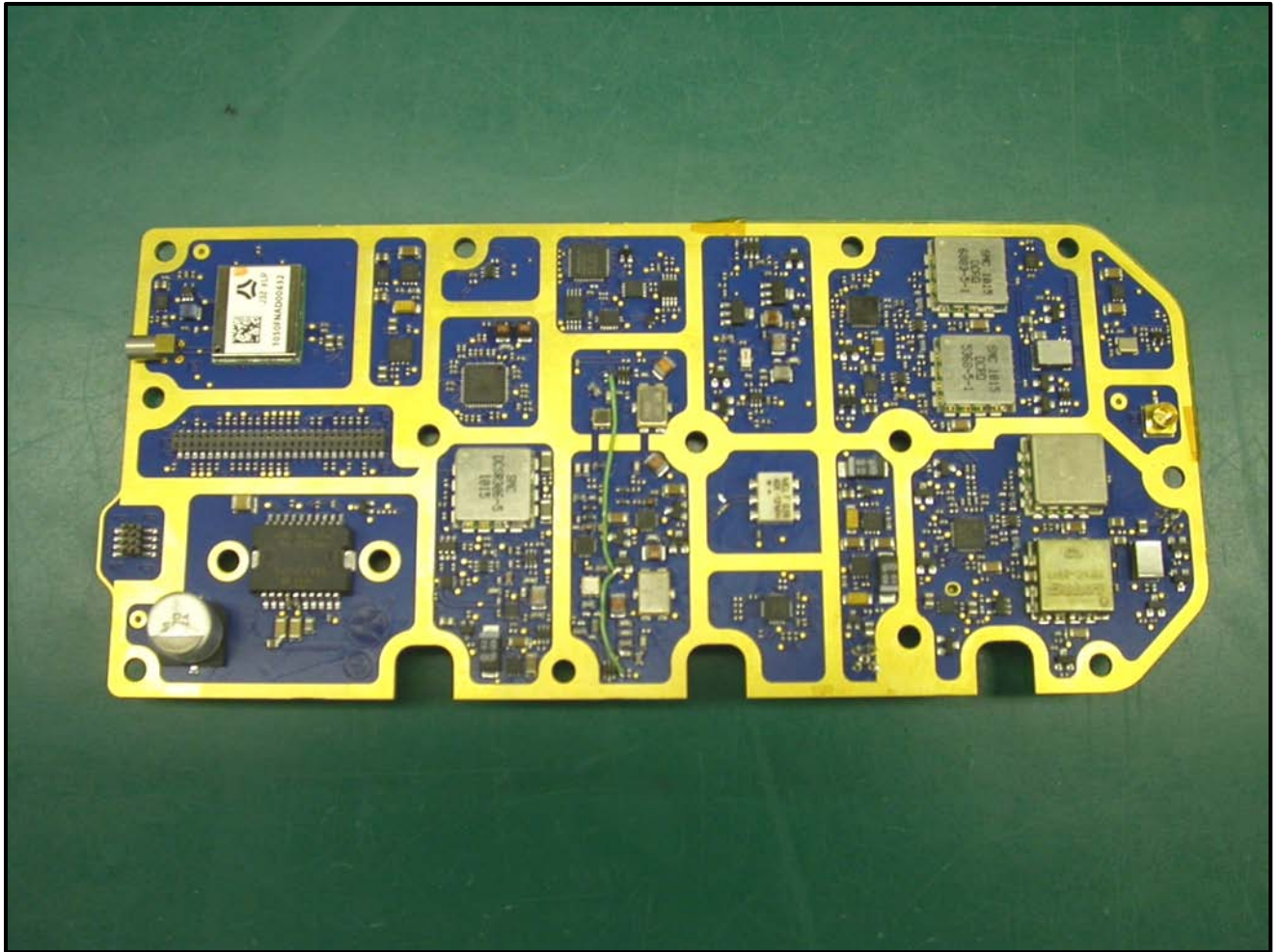


Photograph 8: PA Board Front – Mounted

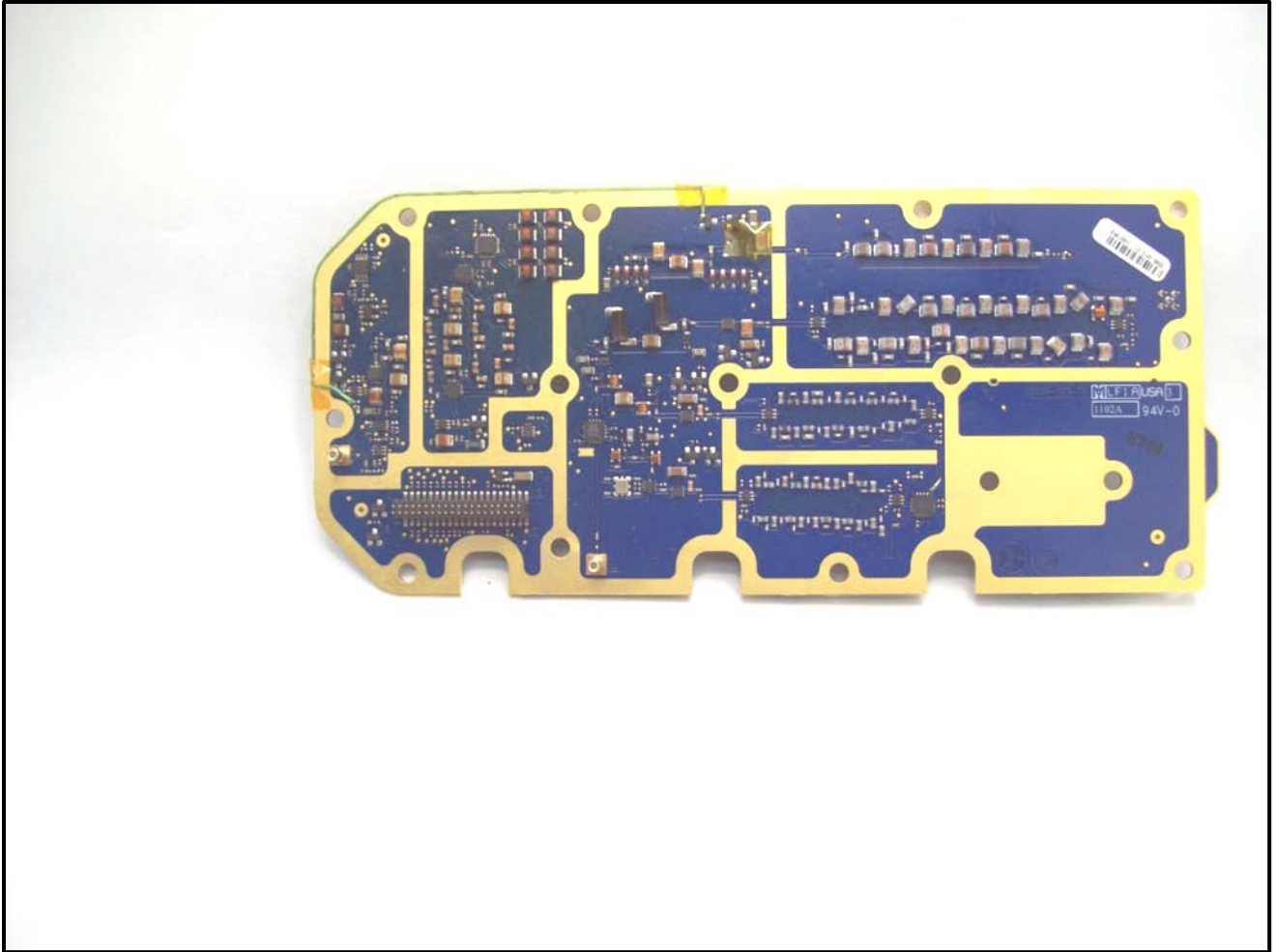




**Photograph 9: PA Board Connected – Back**



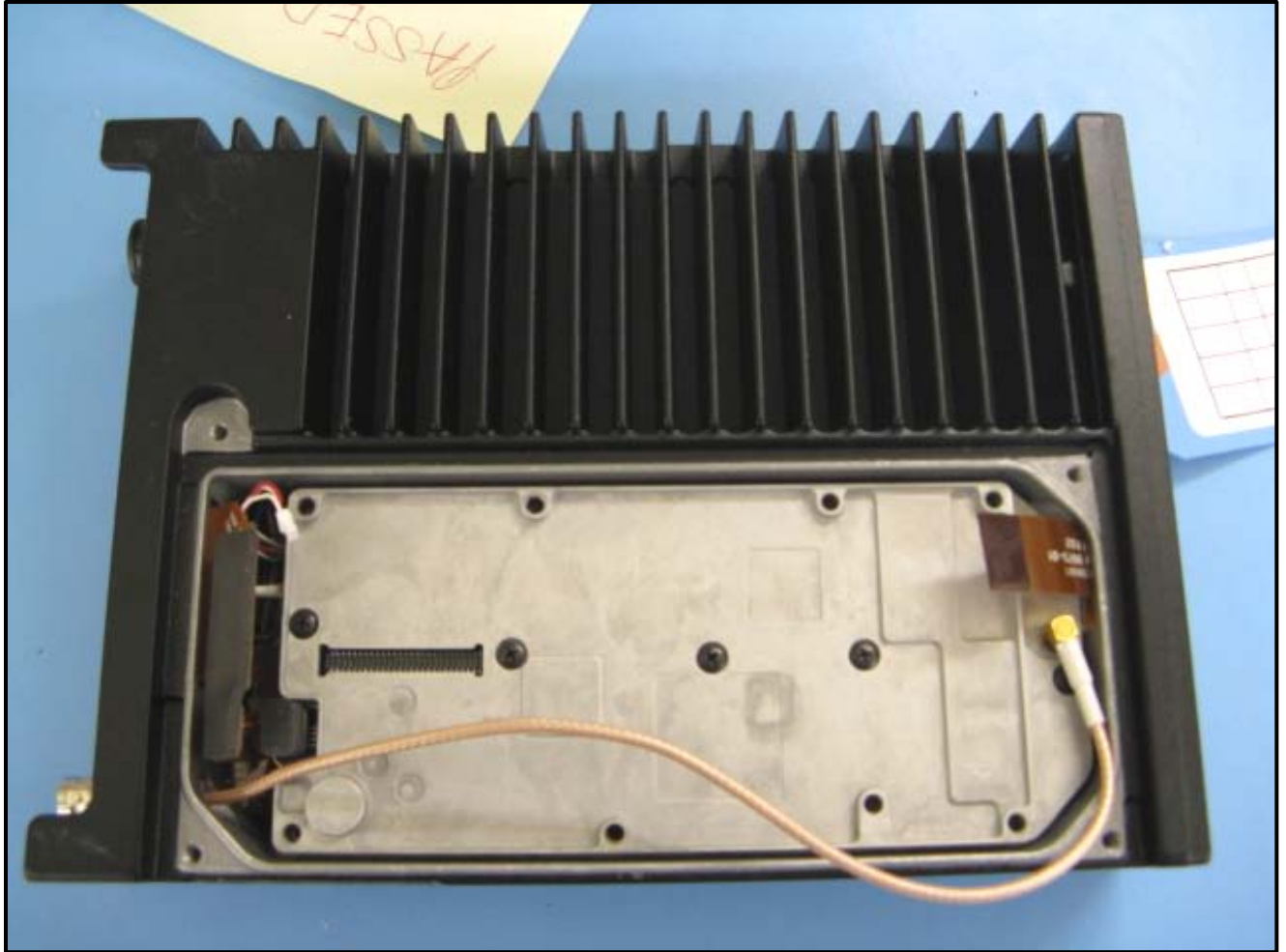
Photograph 10: RES Front



Photograph 11: RES Back

Rhein Tech Laboratories, Inc.  
360 Herndon Parkway, Ste. 1400  
Herndon, VA 20170  
<http://www.rheintech.com>

Client: Harris Corporation  
Model: XG-100M  
IDs: AQZ-XG-100M00/122D-XG100M00  
WO #: 2011028



Photograph 12: RES Housing

Rhein Tech Laboratories, Inc.  
360 Herndon Parkway, Ste. 1400  
Herndon, VA 20170  
<http://www.rheintech.com>

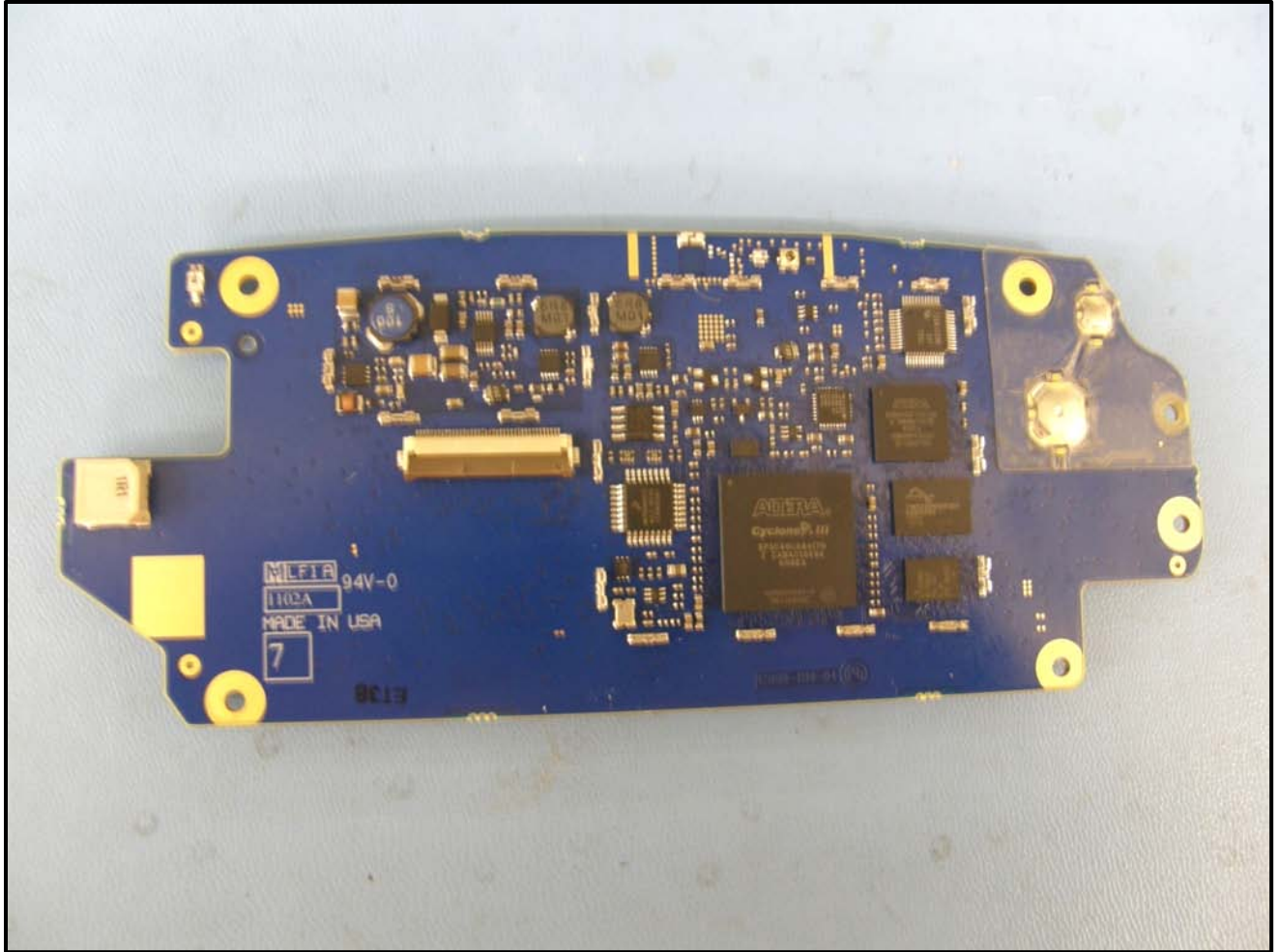
Client: Harris Corporation  
Model: XG-100M  
IDs: AQZ-XG-100M00/122D-XG100M00  
WO #: 2011028



**Photograph 13: RES Mounted**

Rhein Tech Laboratories, Inc.  
360 Herndon Parkway, Ste. 1400  
Herndon, VA 20170  
<http://www.rheintech.com>

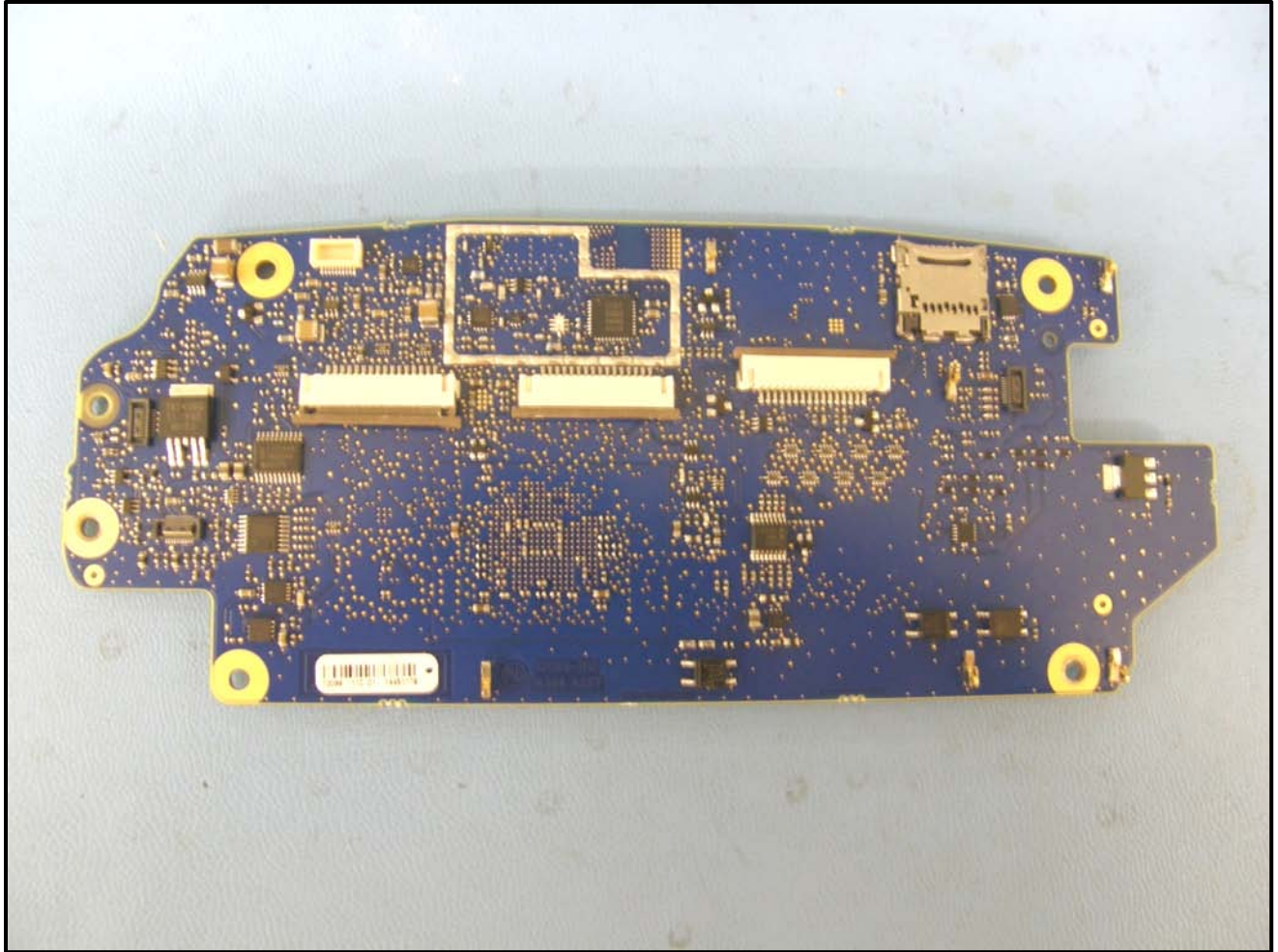
Client: Harris Corporation  
Model: XG-100M  
IDs: AQZ-XG-100M00/122D-XG100M00  
WO #: 2011028



Photograph 14: Control Head Front

Rhein Tech Laboratories, Inc.  
360 Herndon Parkway, Ste. 1400  
Herndon, VA 20170  
<http://www.rheintech.com>

Client: Harris Corporation  
Model: XG-100M  
IDs: AQZ-XG-100M00/122D-XG100M00  
WO #: 2011028



**Photograph 15: Control Head Back**

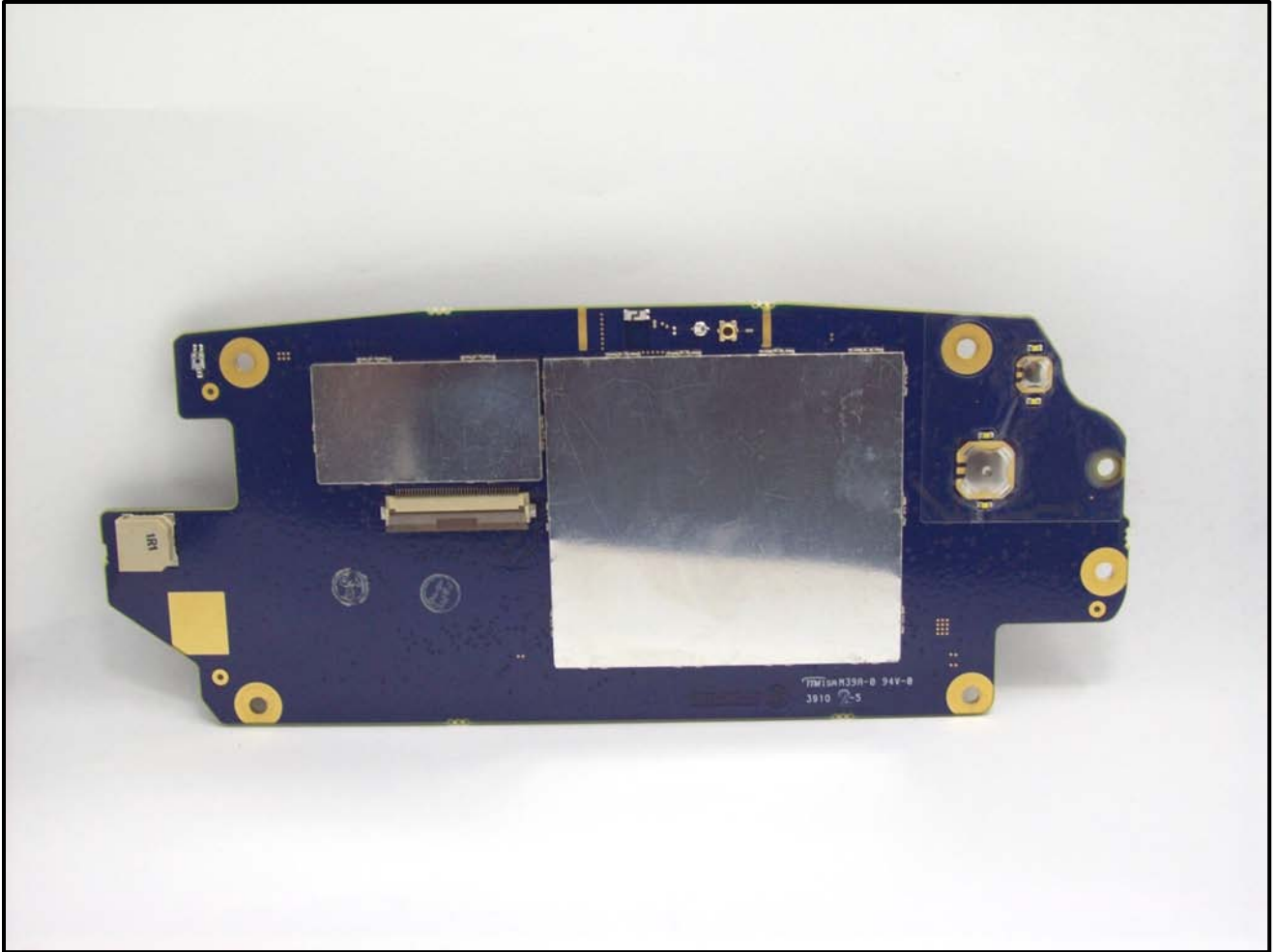
Rhein Tech Laboratories, Inc.  
360 Herndon Parkway, Ste. 1400  
Herndon, VA 20170  
<http://www.rheintech.com>

Client: Harris Corporation  
Model: XG-100M  
IDs: AQZ-XG-100M00/122D-XG100M00  
WO #: 2011028



**Photograph 16: Control Head Housing**

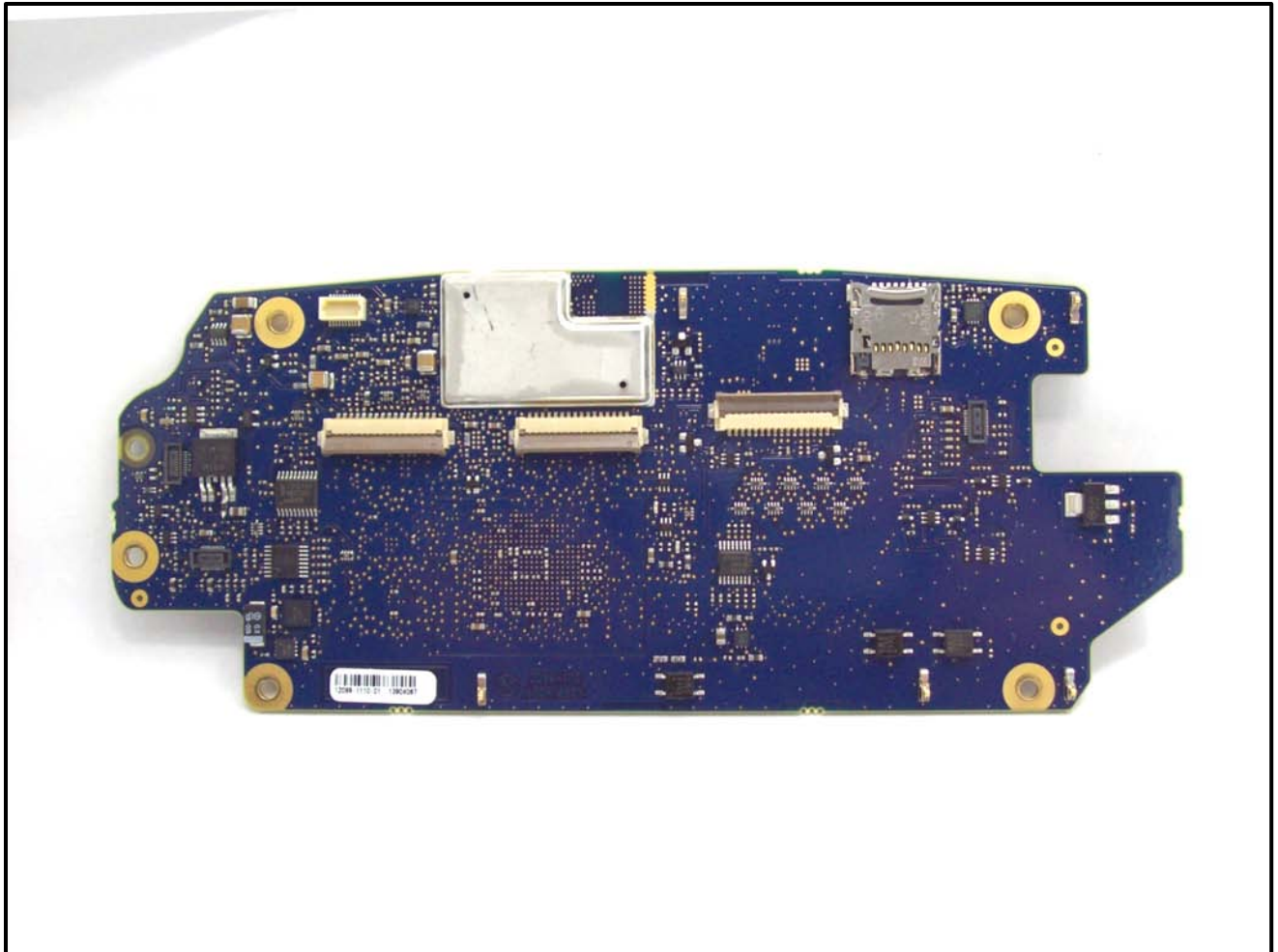




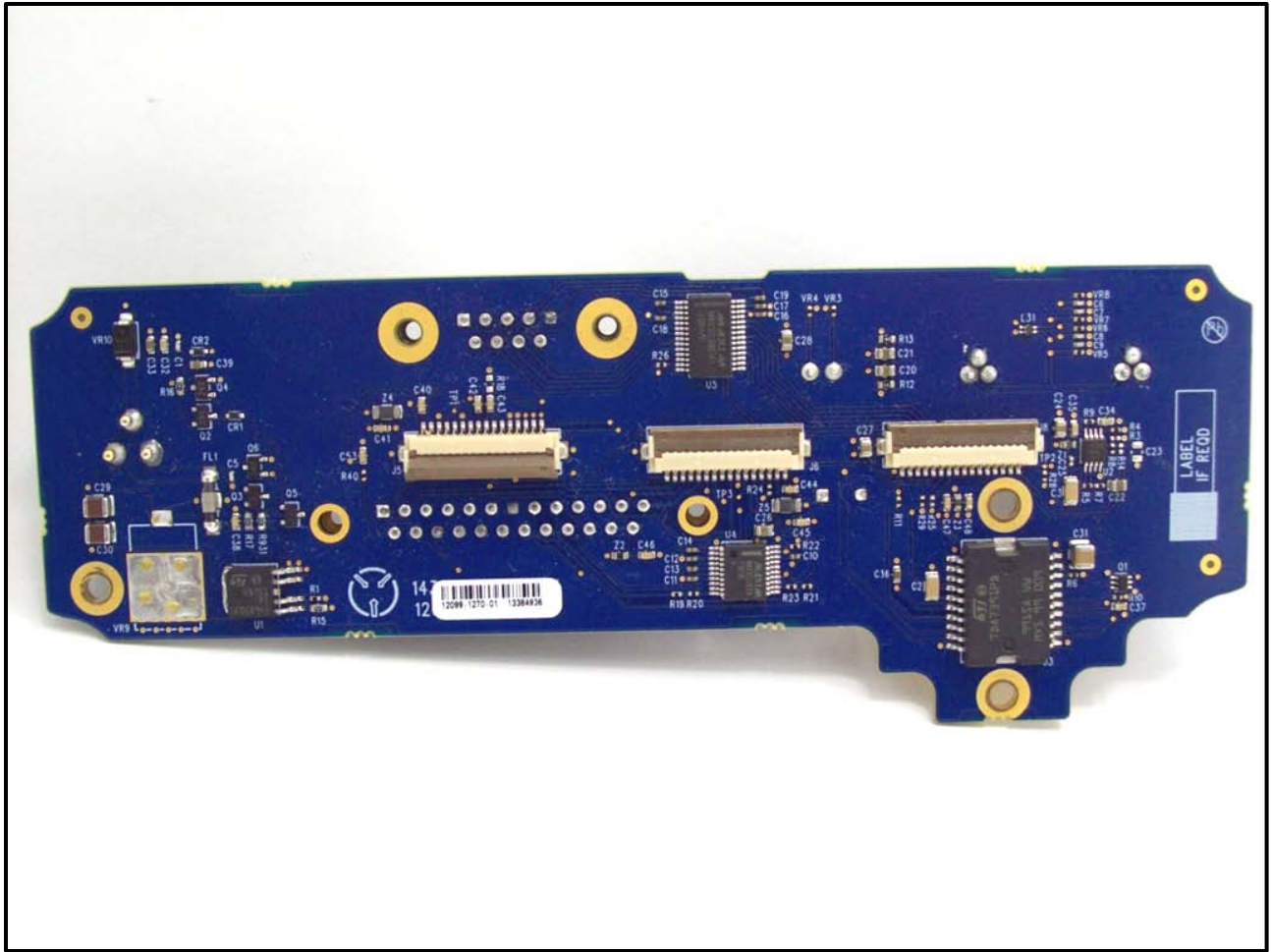
**Photograph 17: Control Head Board Front**

Rhein Tech Laboratories, Inc.  
360 Herndon Parkway, Ste. 1400  
Herndon, VA 20170  
<http://www.rheintech.com>

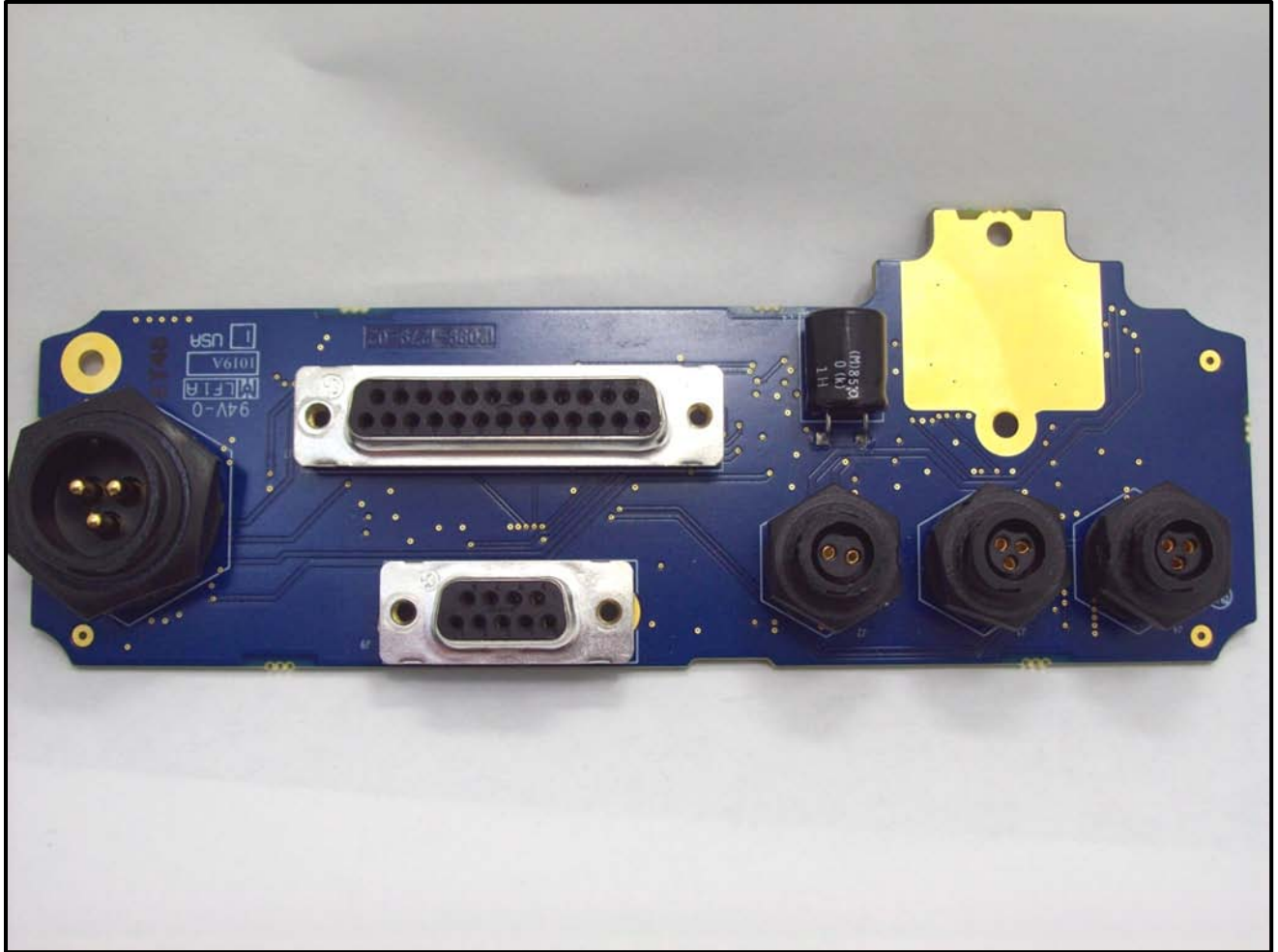
Client: Harris Corporation  
Model: XG-100M  
IDs: AQZ-XG-100M00/122D-XG100M00  
WO #: 2011028



**Photograph 18: Control Head Board Back**



Photograph 19 Control Head Connector Board Front



Photograph 20: Control Head Connector Board Back

Rhein Tech Laboratories, Inc.  
360 Herndon Parkway, Ste. 1400  
Herndon, VA 20170  
<http://www.rheintech.com>

Client: Harris Corporation  
Model: XG-100M  
IDs: AQZ-XG-100M00/122D-XG100M00  
WO #: 2011028



**Photograph 21: Control Head Front Cover**



**Photograph 22: Back Half of Control Head 1**



Photograph 23: Back Half of Control Head 2



**Photograph 24: Control Head Gasket**



Rhein Tech Laboratories, Inc.  
360 Herndon Parkway, Ste. 1400  
Herndon, VA 20170  
<http://www.rheintech.com>

Client: Harris Corporation  
Model: XG-100M  
IDs: AQZ-XG-100M00/122D-XG100M00  
WO #: 2011028



**Photograph 25: Control Head Display**