

20121128_System Check_Diple2450v02 SN869

Frequency: 2450 MHz; Duty Cycle: 1:1; Room Ambient Temperature: 24.0°C; Liquid Temperature: 23.5°C
 Medium parameters used (interpolated): $f = 2450$ MHz; $\sigma = 2.028$ mho/m; $\epsilon_r = 52.504$; $\rho = 1000$ kg/m³

DASY5 Configuration:

- Area Scan Setting - Find Secondary Maximum Within: 2.0 dB and with a peak SAR value greater than 0.0012W/kg
- Electronics: DAE4 Sn877; Calibrated: 2012/3/16
- Probe: EX3DV4 - SN3665; ConvF(7.11, 7.11, 7.11); Calibrated: 2012/4/27;
- Sensor-Surface: 1.4mm (Mechanical Surface Detection)
- Phantom: ELI 4.0; Type: QDOVA001BA; Serial: 1056

Body/Pin=250mW, d=10mm/Area Scan (7x9x1): Measurement grid: dx=15mm, dy=15mm

[Info: Interpolated medium parameters used for SAR evaluation.](#)

Maximum value of SAR (measured) = 20.9 W/kg

Body/Pin=250mW, d=10mm/Zoom Scan (7x7x7)/Cube 0: Measurement grid: dx=5mm, dy=5mm, dz=5mm

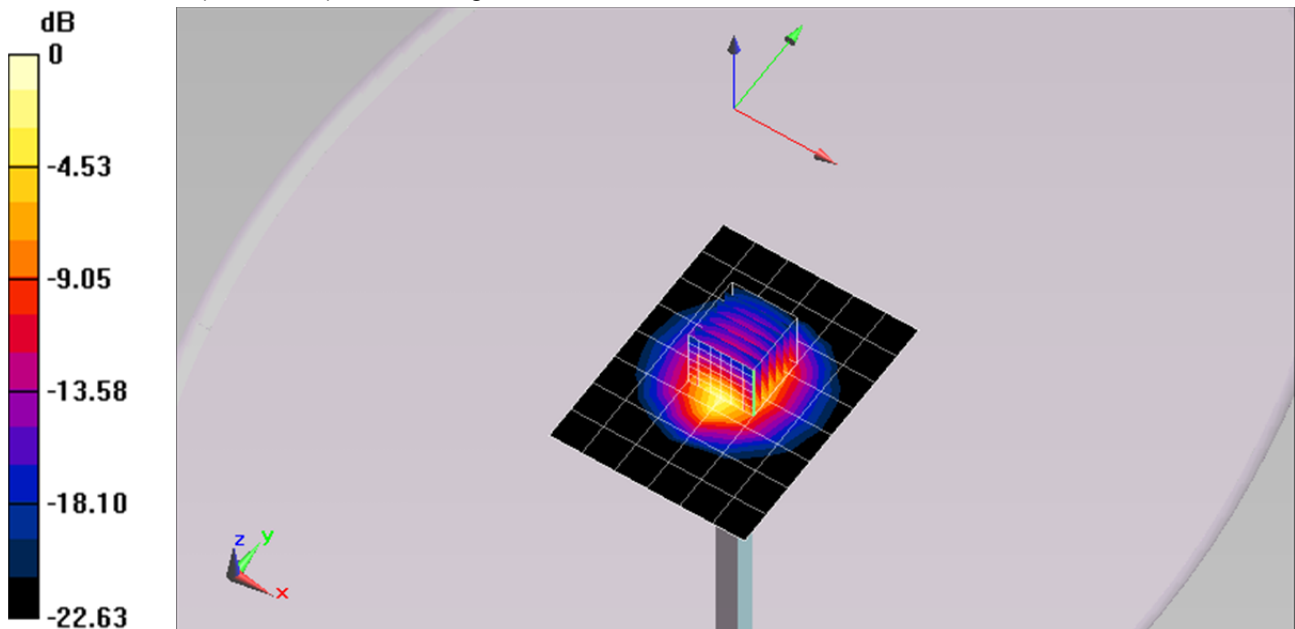
Reference Value = 104.2 V/m; Power Drift = 0.12 dB

Peak SAR (extrapolated) = 26.5 W/kg

SAR(1 g) = 12.6 W/kg; SAR(10 g) = 5.85 W/kg

[Info: Interpolated medium parameters used for SAR evaluation.](#)

Maximum value of SAR (measured) = 21.1 W/kg



0 dB = 21.1 W/kg = 13.24 dBW/kg

20121128_System Check_Diple2450v02 SN869

Frequency: 2450 MHz; Duty Cycle: 1:1

Body/Pin=250mW, d=10mm/Z Scan (1x1x21): Measurement grid: dx=20mm, dy=20mm, dz=5mm

Info: [Interpolated medium parameters used for SAR evaluation.](#)

Maximum value of SAR (measured) = 21.0 W/kg

