





8 7 6 5 4 3 2 1

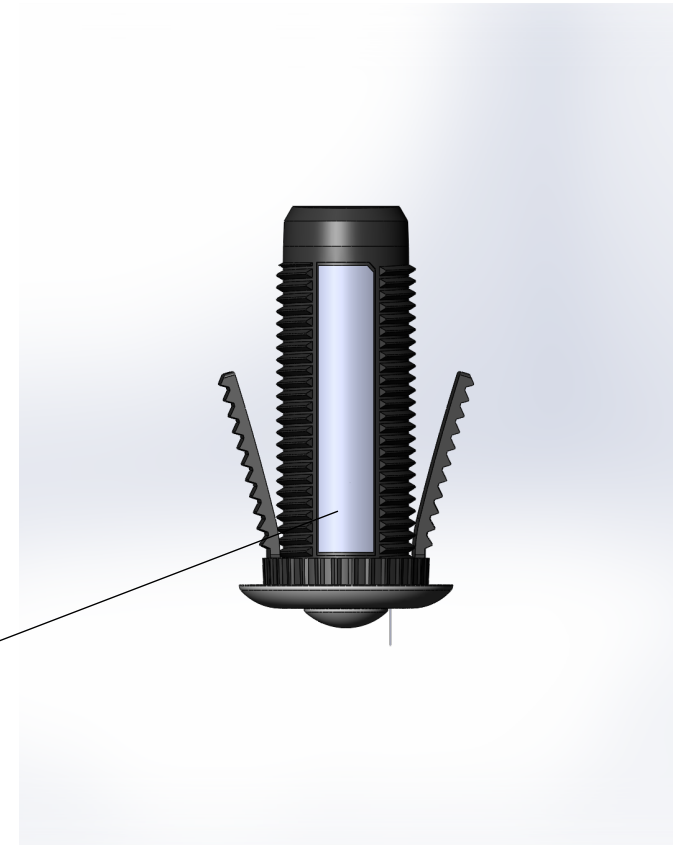
D
C
B
A

1.00 X 45°

 LISTED Open Energy Mgt. Eqpt. 3WG4	 	12VDC, 50mA Class 2 input only 50C max ambient	 Model: CS-D2 enlightedinc.com
		FCC ID: AQQ-CS-D2 IC: 10138A-CSD2	

8.50

43.00



Apply label here as shown

- Notes:
1. Material: 2 mil thick Mylar, white background, with perm adhesive backing suitable for PC
 2. Finish: glossy
 3. Label manufacturer must be UL authorized label supplier

PROPRIETARY NOTICE:
 This document is the property of Enlighted, Inc. The information contained herein is not to be disclosed to anyone without the express written consent of Enlighted, Inc.



TOLERANCES UOS:
 .XXX ±
 .XX ± .10
 .X ± .2
 Angular ± 0.5°

REV:	ECO:	DATE:	DRAWN: Chris Gaul	DATE: 3-21-16	ITEM TITLE: Label, Product, 2-Wire Compact Sensor				
			ENGINEER: Chris Gaul	DATE: 3-21-16					
			APPROVED:	DATE:	UNITS: mm	PART NO.: 13-01183-02	REV: 02		
			ROHS COMPLIANT:	SCALE: 6:1	SIZE: B	DWG NO.:	SHEET: 1 of 1		

8 7 6 5 4 3 2 1