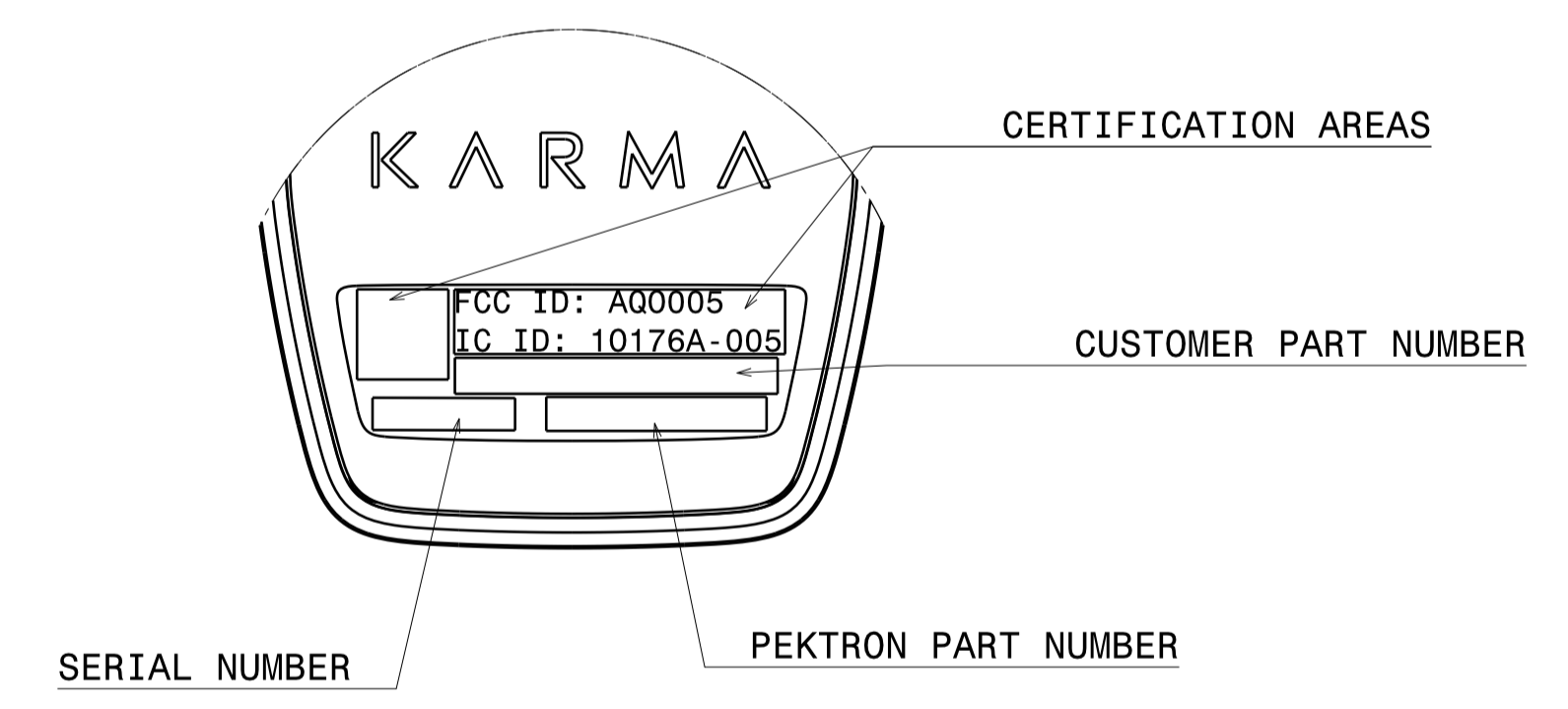
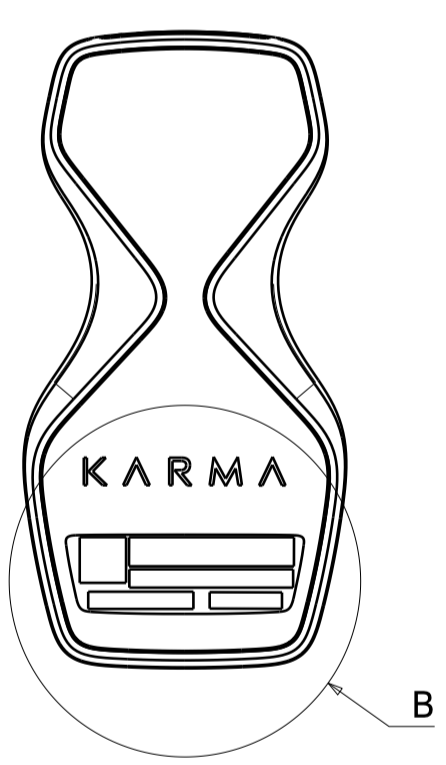
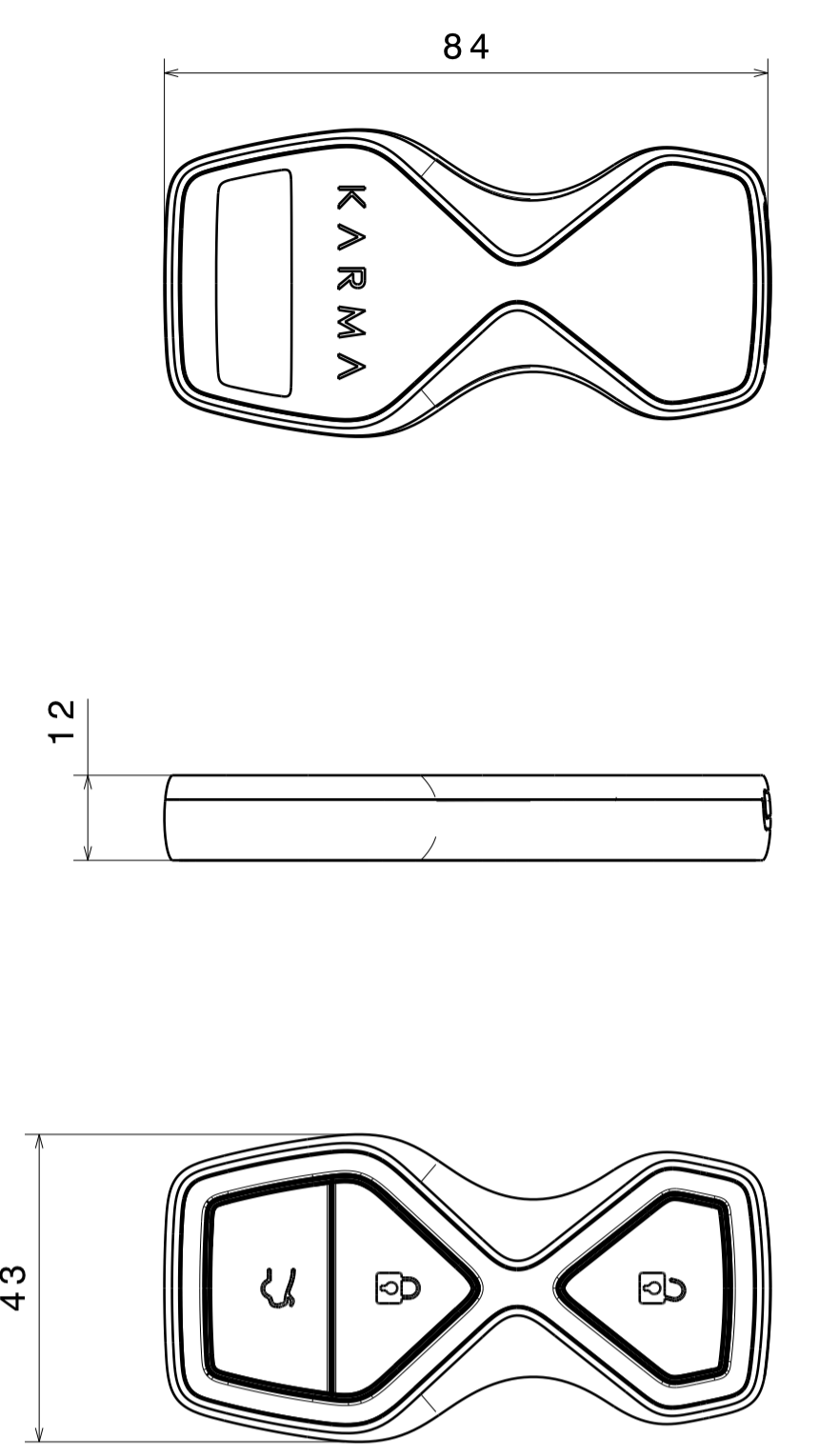
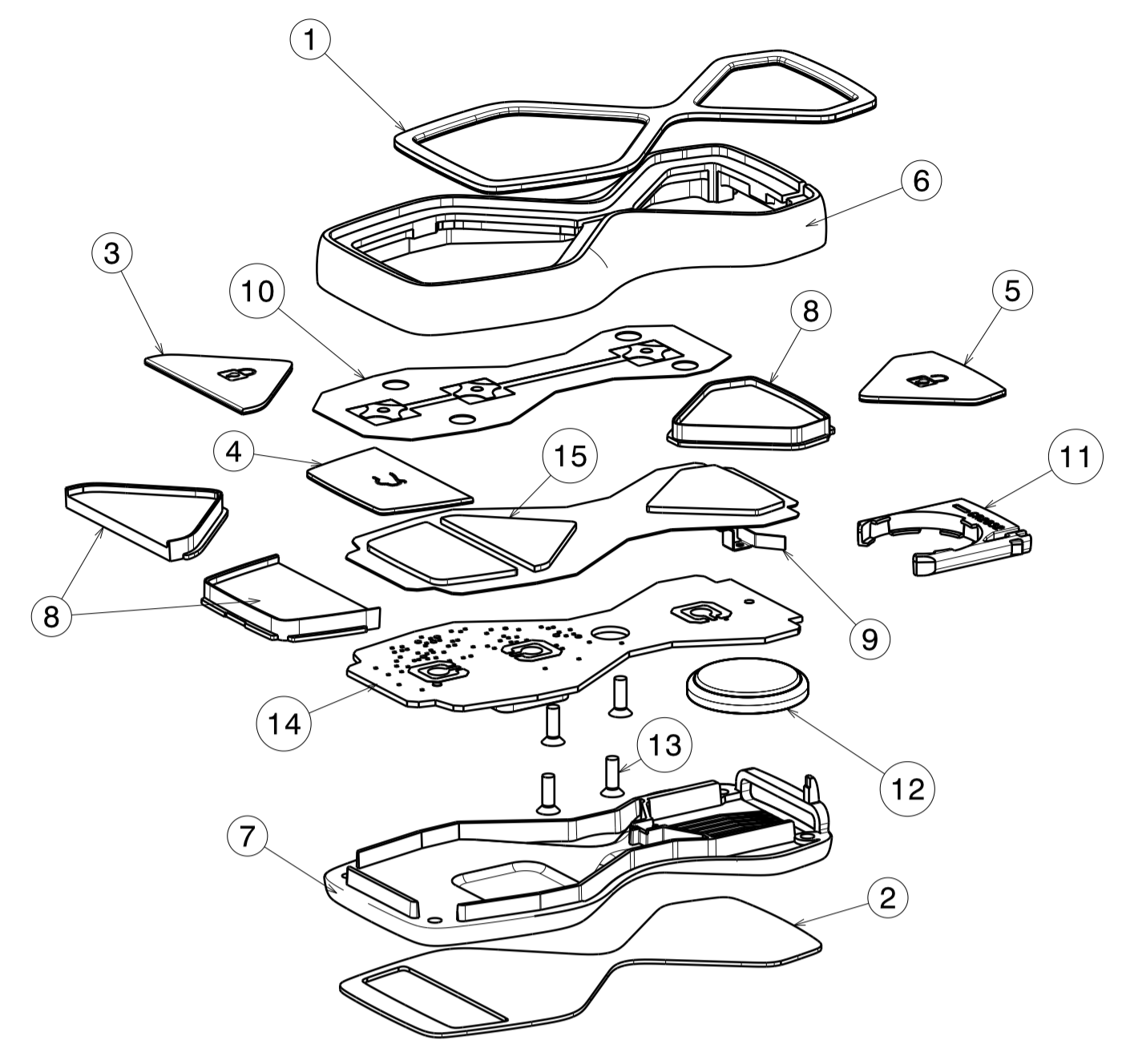


ITEM	PART No	DESCRIPTION	QTY	MATERIAL	COLOUR	FINISH
1	0783P01*	TOP COVER	1	ACRYLIC	CLEAR	BLACK BACKING
2	0783P02*	BACK COVER	1	ACRYLIC	CLEAR	BLACK BACKING
3	0783P03*	LOCK	1	ACRYLIC	CLEAR	BLACK BACKING
4	0783P04*	BOOT	1	ACRYLIC	CLEAR	BLACK BACKING
5	0783P05*	UNLOCK	1	ACRYLIC	CLEAR	BLACK BACKING
6	0783P06*	METAL FRAME	1	ALUMINIUM	SATIN	ANODIZED
7	0783P07*	BACKING FRAME	1	PC-ABS	BLACK	TEXTURED
8	0783P08*	BUTTON PACK	1	PC-ABS	BLACK	POLISH
9	0783P12*	BATTERY CONTACT	1	PHSOPHOR BRONZE	NATURAL	ELECTROPLATE NICKEL
10	0783P13*	DOME SWITCH ARRAY	1	-	-	-
11	0783P14*	BATTERY HOLDER	1	PC-ABS	BLACK	POLISH
12	0783P15*	CR2032	1	-	-	-
13	0783P16*	M2 TORX	4	STAINLESS STEEL	-	NATURAL
14	0783AY**	PCB	1	-	-	-
15	0783P20*	SILICON PAD	1	SILICON	-	NATURAL



**NOTES:**

- TECH. SPEC. REFERENCE NUMBER: MTS.13.04.0001 KEYS & PASSIVE ENTRY SYSTEM
- ICONS LASER MARKED USING ARTWORK FILE: 0783-KF-ICONS-\*.PDF
- PLASTIC MOULDING A-SURFACES TO HAVE POLISHED FINISH.
- APPROX. UNIT WEIGHT OF SINGLE KEY = 45g
- \* INDICATES LATEST ISSUE LEVEL
- IMPORTANT:**  
PART MUST COMPLY WITH KARMA CQP 0783-  
PART MUST COMPLY WITH THE END OF LIFE VEHICLES DIRECTIVE (2000-53-EC).  
ALL MATERIAL USED IN THE MANUFACTURE OF THIS PART MUST BE RoHS COMPLIANT.

ISS	DATE	CH No. (OR DESCRIPTION)	DRAWN	ENG' R	ISS	DATE	CH No. (OR DESCRIPTION)	DRAWN	ENG' R
A	15-12-15	DRAWING RELEASED	AA	AA					
B	17-10-16	ECN0783-16	AA	AA					
C	03-01-17	ECN0783-19	AA	AA					

ALL DIMENSIONS ARE IN mm UNLESS OTHERWISE STATED

TOLERANCES:  
 NO DECIMAL PLACES +/- 0.5mm  
 1 DECIMAL PLACE +/- 0.2mm  
 2 DECIMAL PLACES +/- 0.1mm  
 ANGULAR TOLERANCES +/- 1.0 DEGREES U.O.S.

MACHINING BURRS/MOULDING FLASH TO BE REMOVED  
 DO NOT SCALE DRAWING  
 PARTS ARE TO BE CLEAN AND DRY

**PEKTRON** IMPORTANT: CONFIDENTIALITY NOTICE

This drawing and the information contained within it are the property of Pektron Group Limited and must be held in strict confidence by the recipient. This drawing is supplied to the recipient for illustration purposes only. Pektron Group Limited and the copyright in this drawing are to be held either by one or more of the parties to this agreement or by Pektron Group Limited. This drawing and the information contained within it are to be used only for the purposes for which they are supplied and the recipient shall be responsible for ensuring that the information is not disclosed to any third party other than those employees of the recipient who need to use the drawing and information contained within it. It is the responsibility of the recipient to bind any such employees to retain such information in strict confidence and to ensure that they do not disclose it to any third party.

Any patents and/or design applications, registered designs, trademarks, design rights, or copyright arising from the use of this drawing and/or the information contained within it shall be considered the property of Pektron Group Limited.

TITLE		KEY SET GA - 433MHz	
DRAWING SCALE	MATERIAL	N/A	
1:1			
SIZE	FINISH	N/A	
A1			
CHECKED	L. PAPUC	APPROVED	A. ASHBY
DRG No:	0783G02C		