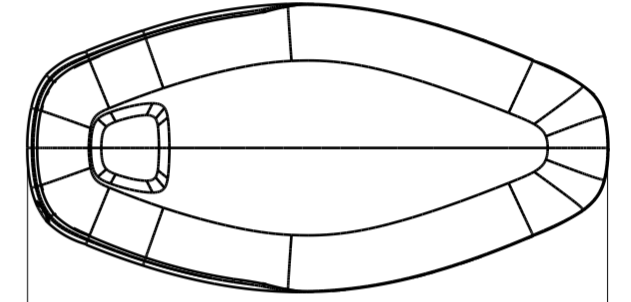
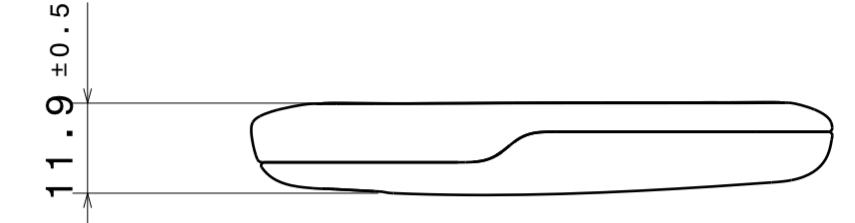
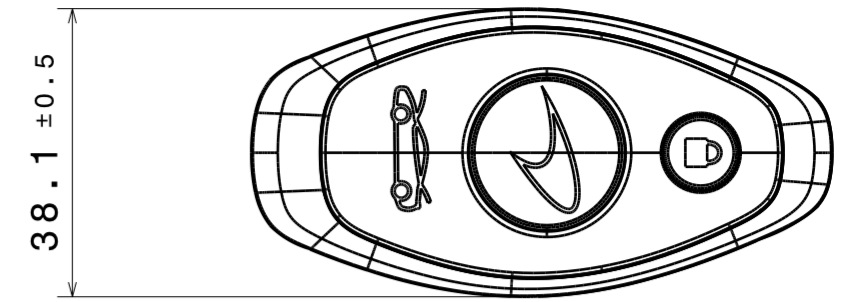
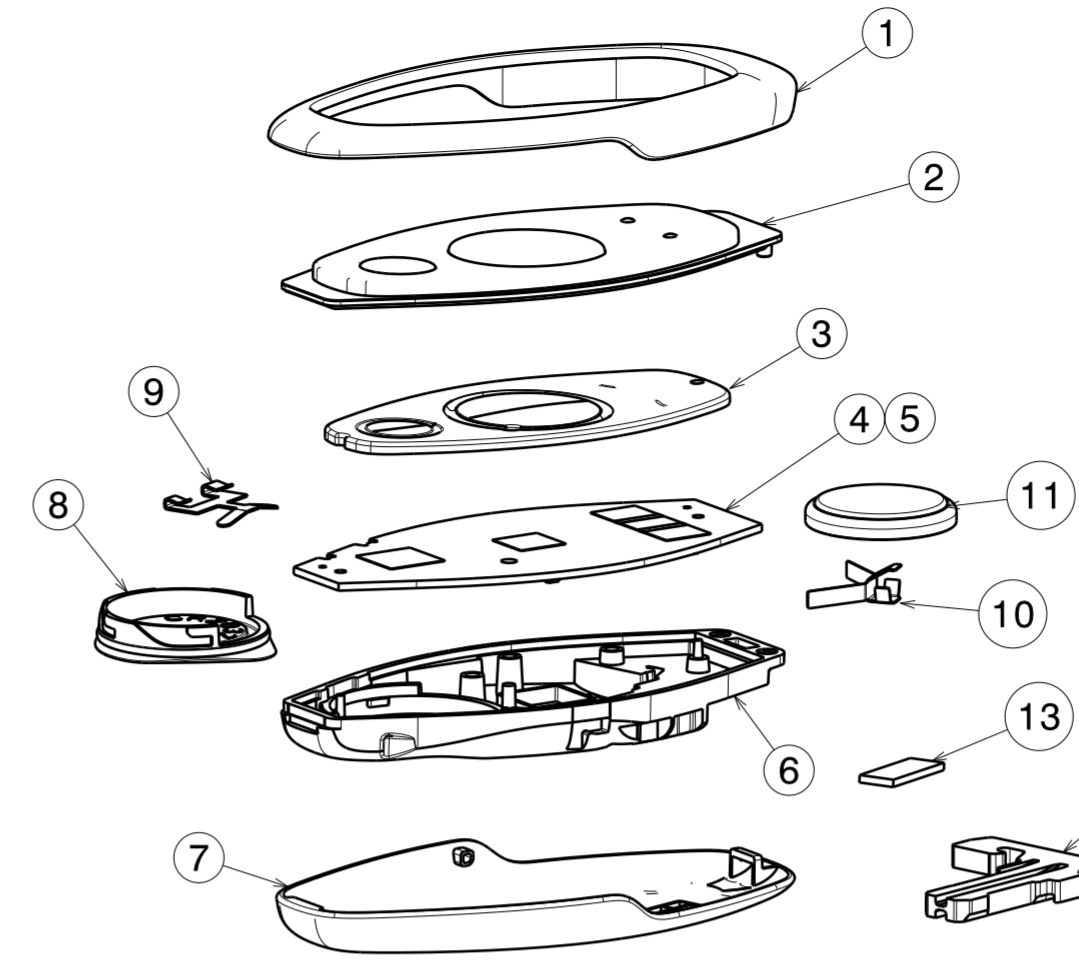


DRG No: 0775G04C

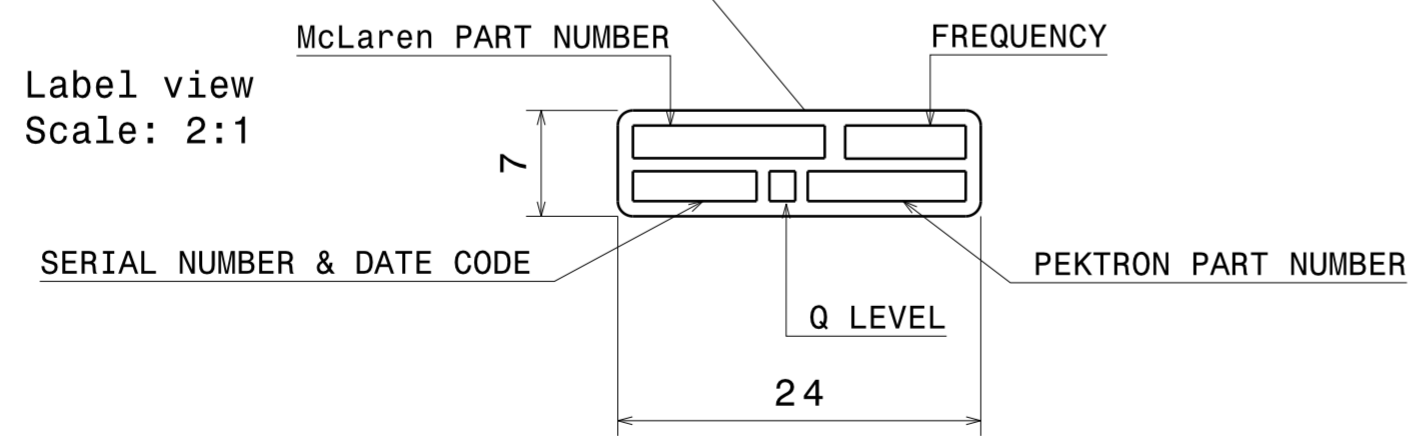
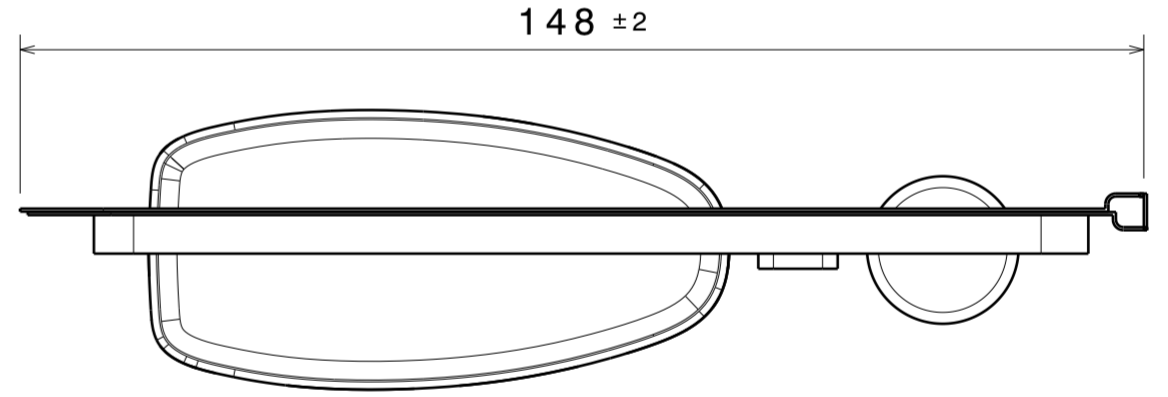
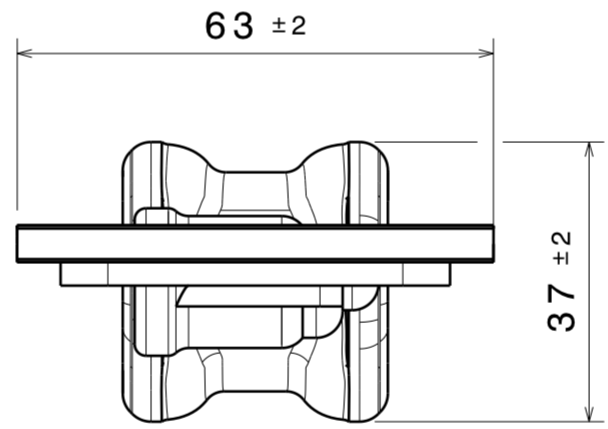
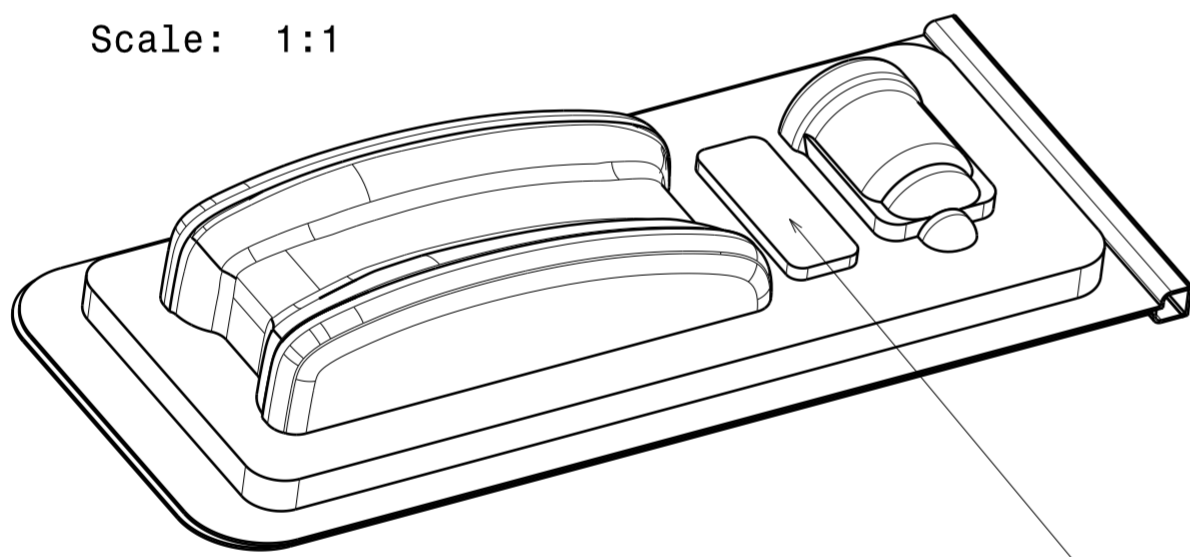
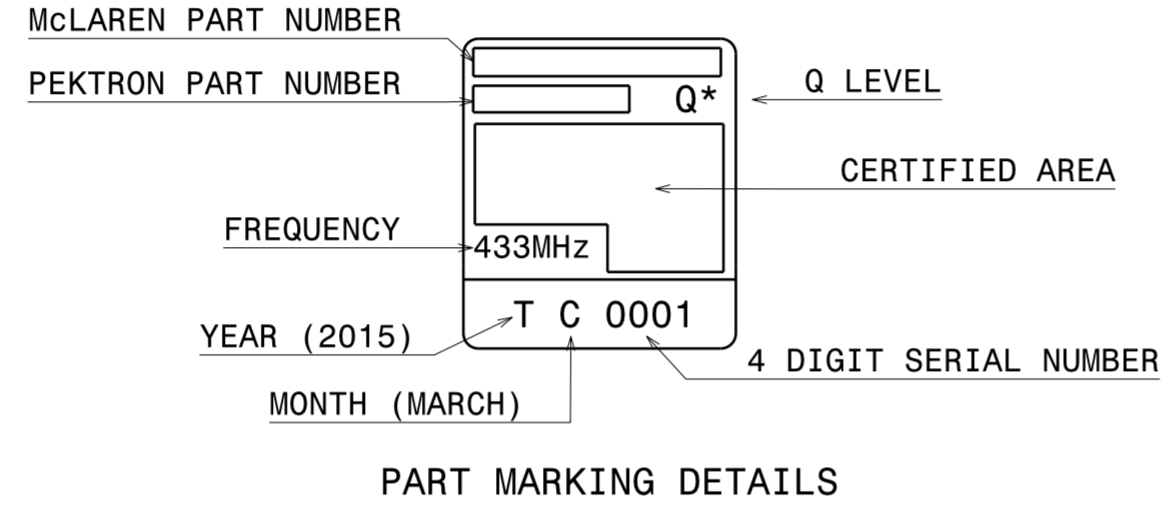
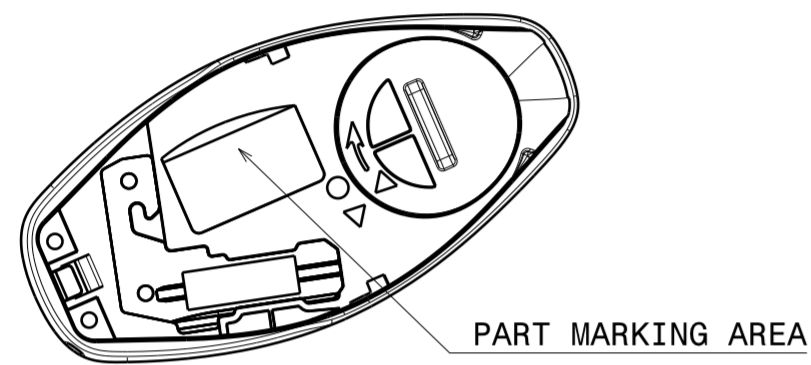
ITEM	PART No.	DESCRIPTION	QTY	MATERIAL	COLOUR	FINISH
1	MWK 0775P06*	Metal Trim	1	STAINLESS STEEL	NATURAL	BRIGHT POLISHED
2	MDP 0775P02*	Button membrane 4 button etch	1	NYLON PA6 GF30	BLACK	FINE SPARK (VDI 24)
3	MDR 0775P04*	4 Button Silicon Membrane	1	SILICON RUBBER	NATURAL	SMOOTH
4	- 0775AY1*	PCB Assembly	1	-	-	-
5	SWT 0775P10*	Dome Array	1	-	-	-
6	MDP 0775P01*	Module Enclosure	1	NYLON PA6 GF30	BLACK	FINE SPARK (VDI 24)
7	MDP 0775P05*	Backshell Trim	1	PC-ABS	BLACK	MT11520
8	MDP 0775P07*	Battery Cover	1	TPE	BLACK	FINE SPARK
9	MWK 0739P18*	Negative Battery Contact	1	BERYLLIUM COPPER	NATURAL	ELECTROPLATE NICKEL
10	MWK 0749P18*	Positive Battery Contact	1	PHOSPHOR BRONZE	NATURAL	ELECTROPLATE NICKEL
11	BAT CR2032	Battery	1	-	-	-
12	-	Trimark Key Blade	1	-	-	-
13	RUB 0775P08*	Foam Pad (key retention)	1	-	BLACK	-

THIRD ANGLE



Isometric view
Scale: 1:1

Keyblade For
Illustration
Only



- NOTES:
- TECH. SPEC. REFERENCE NUMBER: MTS.13.04.0001 KEYS & PASSIVE ENTRY SYSTEM
 - MCLAREN PART NUMBER: 13M1133CX ASSY-KEY SET-IGNITION-433MHZ
 - ICONS LASER MARKED USING ARTWORK FILE: P13 KEYFOB DETAIL.PDF
ICON COLOUR: SIGNAL GREY
 - PLASTIC MOULDING A-SURFACES TO HAVE A TEXTURED FINISH TO VDI 24.
 - MCLAREN SMART TRANSPONDER SPECIFICATION: ULP11-0052 KEY
 - APPROX. UNIT WEIGHT OF SINGLE KEY = 25g
 - * INDICATES LATEST ISSUE LEVEL
 - IMPORTANT:
PART MUST COMPLY WITH MCLAREN CQP1 13M1299CP
PART MUST COMPLY WITH THE END OF LIFE VEHICLES DIRECTIVE (2000-53-EC).
ALL MATERIAL USED IN THE MANUFACTURE OF THIS PART MUST BE RoHS COMPLIANT.

DATE OF PRINT	ISS	DATE	Cn No. (OR DESCRIPTION)	DRAWN	ENG'R	ISS	DATE	Cn No. (OR DESCRIPTION)	DRAWN	ENG'R
23-10-15	A	17-03-15	DRAWING RELEASED	AA	AA					
	B	05-10-15	ECN0775-06	MG	AA					
	C	23-10-15	ECN0775-07	MG	AA					

ALL DIMENSION ARE IN mm UNLESS OTHERWISE STATED

TOLERANCES
 NO DECIMAL PLACES + / - 0.5mm
 1 DECIMAL PLACES + / - 0.2mm
 2 DECIMAL PLACES + / - 0.1mm
 ANGULAR TOLERANCES + / - 1.0 DEGREES U.O.S

MACHINING BURRS/MOULDING FLASH TO BE REMOVED
 DO NOT SCALE DRAWING
 PARTS ARE TO BE CLEAN AND DRY

PEKTRON IMPORTANT: CONFIDENTIALITY NOTICE

THIS DRAWING AND THE INFORMATION CONTAINED WITHIN IT ARE THE PROPERTY OF PEKTRON GROUP LIMITED AND MUST BE HELD IN STRICT CONFIDENCE BY THE RECIPIENT. THIS DRAWING IS SUPPLIED TO THE RECIPIENT FOR ILLUSTRATION PURPOSES ONLY. PEKTRON GROUP LIMITED OWNS THE COPYRIGHT IN THIS DRAWING AND NO COPY IS TO BE MADE EITHER IN PART OR IN HOLE WITHOUT WRITTEN PERMISSION OF PEKTRON GROUP LIMITED.

THIS DRAWING AND THE INFORMATION CONTAINED WITHIN IT:
 1: MAY NOT UNDER ANY CIRCUMSTANCES BE DISCLOSED TO ANY THIRD PARTY OTHER THAN THOSE EMPLOYEES OF THE RECIPIENT WHO NEED TO USE THIS DRAWING AND THE INFORMATION CONTAINED WITHIN IT STRICT CONFIDENCE; AND
 2: SHOULD BE DESTROYED OR RETURNED UPON INSTRUCTION BY PEKTRON GROUP LIMITED. ANY PATENTS AND/OR DESIGN APPLICATIONS, REGISTERED DESIGNS, TOPOGRAPHY RIGHTS, DESIGN RIGHTS, OR COPYRIGHTS ARISING FROM THE USE OF THIS DRAWING AND/OR THE INFORMATION CONTAINED WITHIN IT SHALL BE CONSIDERED THE PROPERTY OF PEKTRON GROUP LIMITED.

TITLE			
SCALE	MATERIAL	N/A	
1:1			
FRAME SIZE	FINISH	N/A	
A2			
CHECKED	A.ASHBY	APPROVED	A.ASHBY
DRG No:	0775G04C		