

ANNEX A – TEST PLOTS

Plots of System Check

Measurement Report for Device, FRONT, Validation band, CW, Channel 10000 (10000.0 MHz)

Device Under Test Properties

Model, Manufacturer	Dimensions [mm]	IMEI	DUT Type
Device,	100.0 x 100.0 x 100.0		Dipole

Exposure Conditions

Phantom Section	Position, Test Distance [mm]	Band	Group, UID	Frequency [MHz], Channel Number	Conversion Factor
5G	FRONT, 10.00	Validation band	CW, 0--	10000.0, 10000	1.0

Hardware Setup

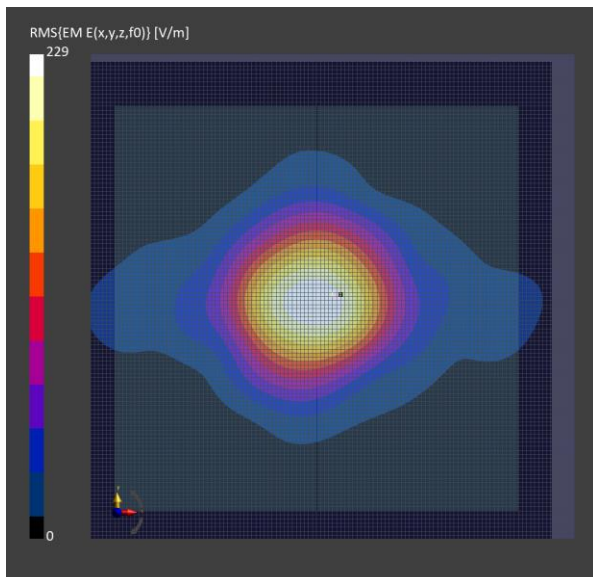
Phantom	Medium	Probe, Calibration Date	DAE, Calibration Date
mmWave - 1087	Air -	EUmmWV4 - SN9603_F1-55GHz, 2022-10-25	DAE4 Sn546, 2022-9-15

Scans Setup

Scan Type	5G
Scan	
Grid Extents [mm]	120.0 x 120.0
Grid Steps [lambda]	0.15 x 0.15
Sensor Surface [mm]	10.0
MAIA	N/A

Measurement Results

Scan Type	5G Scan
Date	2023-04-13, 13:53
Avg. Area [cm ²]	1.00
psPDn+ [W/m ²]	134
psPDtot+ [W/m ²]	136
psPDmod+ [W/m ²]	137
E _{max} [V/m]	229
Power Drift [dB]	-0.01



Plots of Test

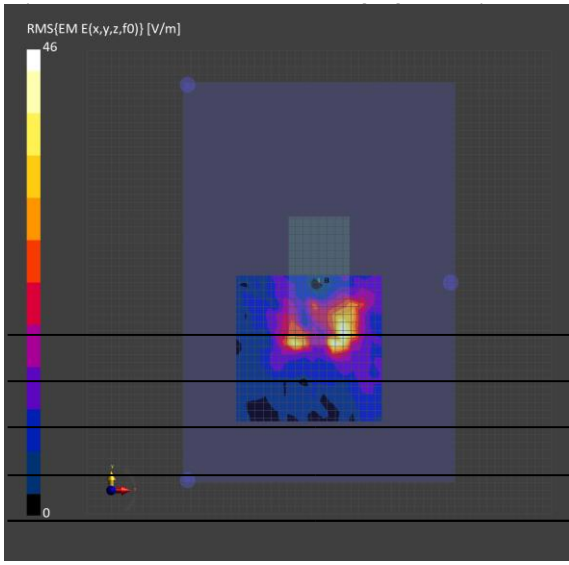
Measurement Report for Device, BACK, U-NII-5, IEEE 802.11a, Channel 45 (6175.0 MHz)

Device under Test Properties

Model, Manufacturer	Dimensions [mm]	IMEI	DUT Type
Device,	161.0 x 76.0 x 8.0		Phone

Exposure Conditions

Device, UID	Frequency [MHz], Channel Number	Conversion Factor
Device, 10671-AAC	6175.0, 45	1.0
DAE, Calibration Date		
Device, 2022-10-25	DAE4 Sn546, 2022-9-15	



Measurement Results

Scan Type	5G Scan
Date	2023-04-13
Avg. Area [cm ²]	4.00
psPDn+ [W/m ²]	2.11
psPDtot+ [W/m ²]	2.49
psPDmod+ [W/m ²]	2.81
E _{max} [V/m]	46

