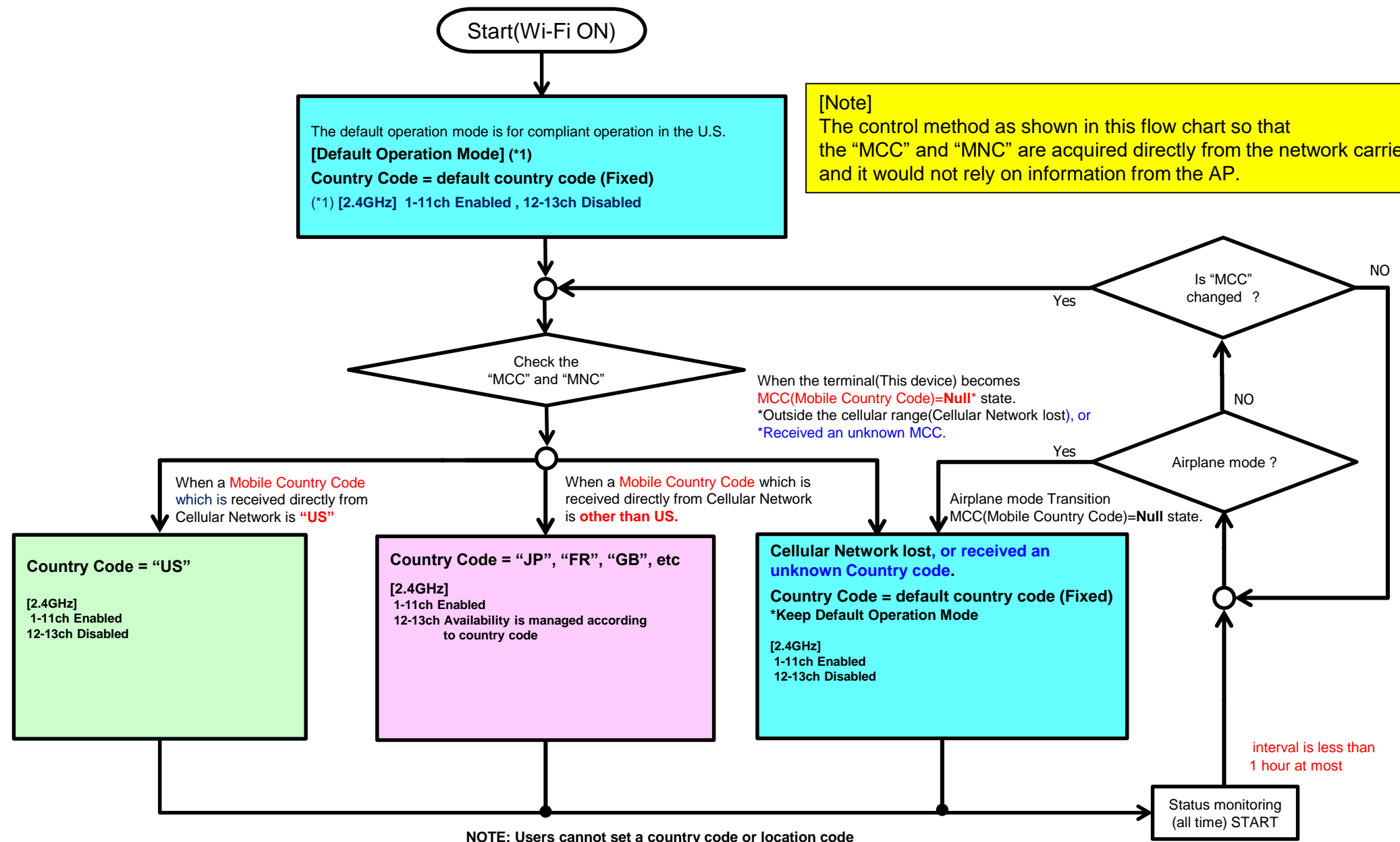


Verification report of control algorithm
is accordance with KDB594280

FCC ID : APYHRO00296

Date : 2021 May-10th

◆ Channel Control Algorithm Flowchart



[Note]
The control method as shown in this flow chart so that the "MCC" and "MNC" are acquired directly from the network carrier and it would not rely on information from the AP.

When the terminal(This device) becomes MCC(Mobile Country Code)=Null* state.
*Outside the cellular range(Cellular Network lost), or
*Received an unknown MCC.

When a Mobile Country Code which is received directly from Cellular Network is "US"

When a Mobile Country Code which is received directly from Cellular Network is other than US.

Airplane mode Transition
MCC(Mobile Country Code)=Null state.

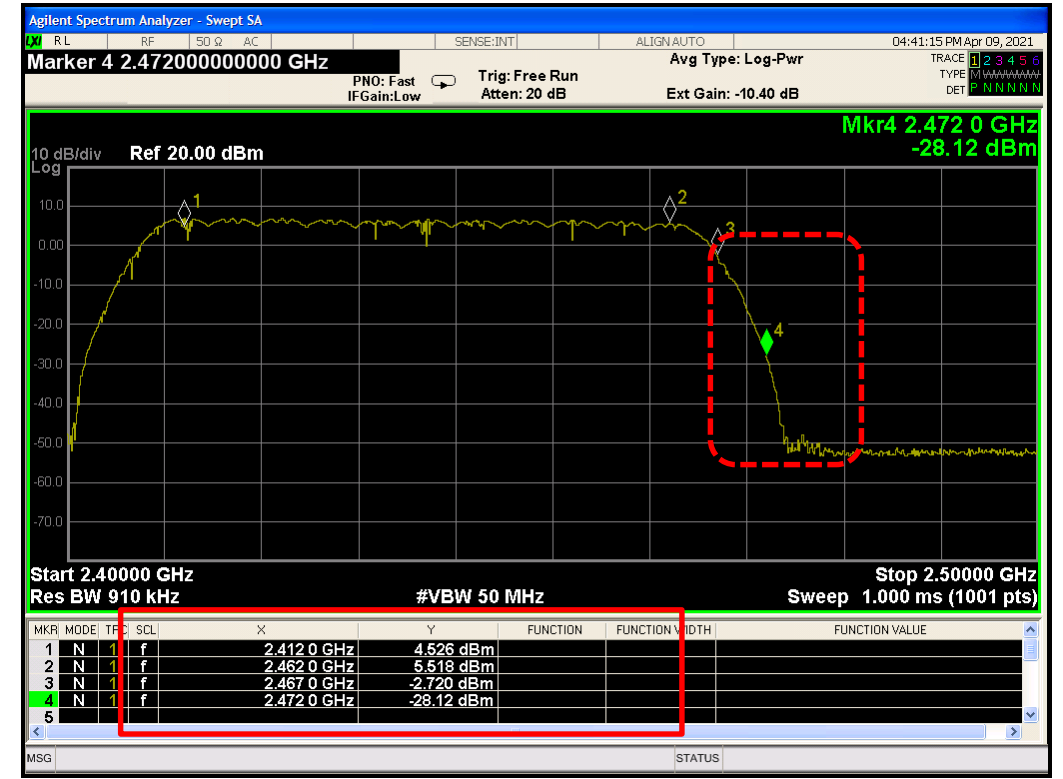
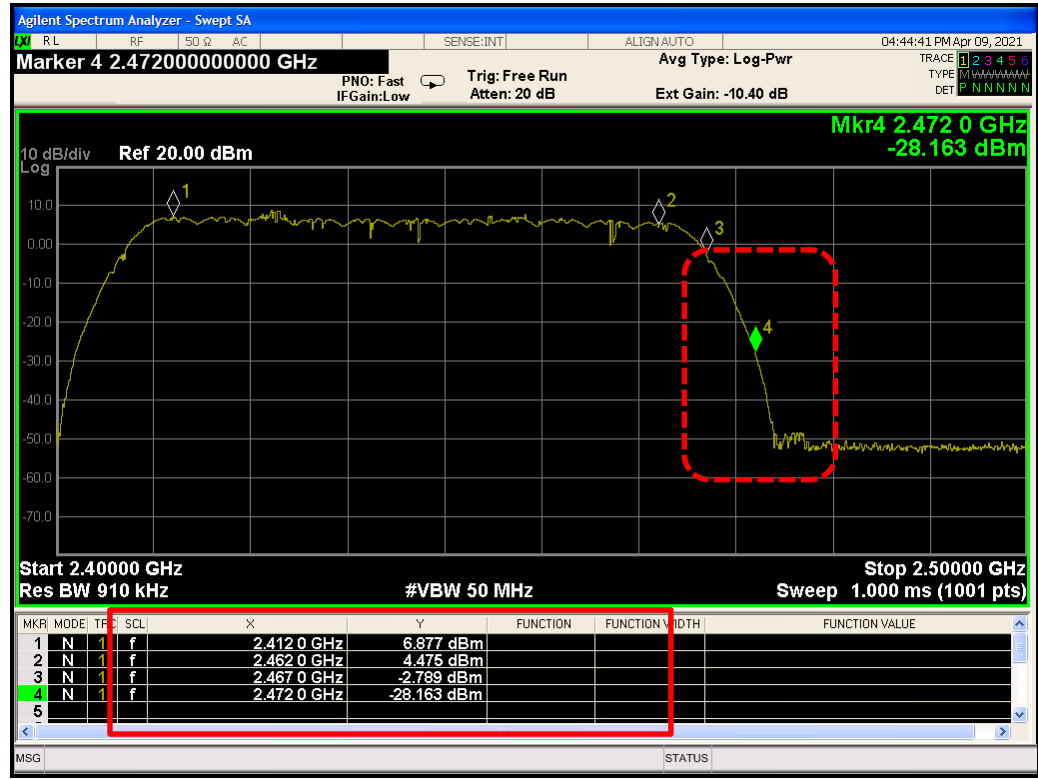
interval is less than 1 hour at most

NOTE: Users cannot set a country code or location code

◆ Scan Waveform on 2.4GHz(Country Code=default country code, US)

[CC=default country code]

[CC="US"]



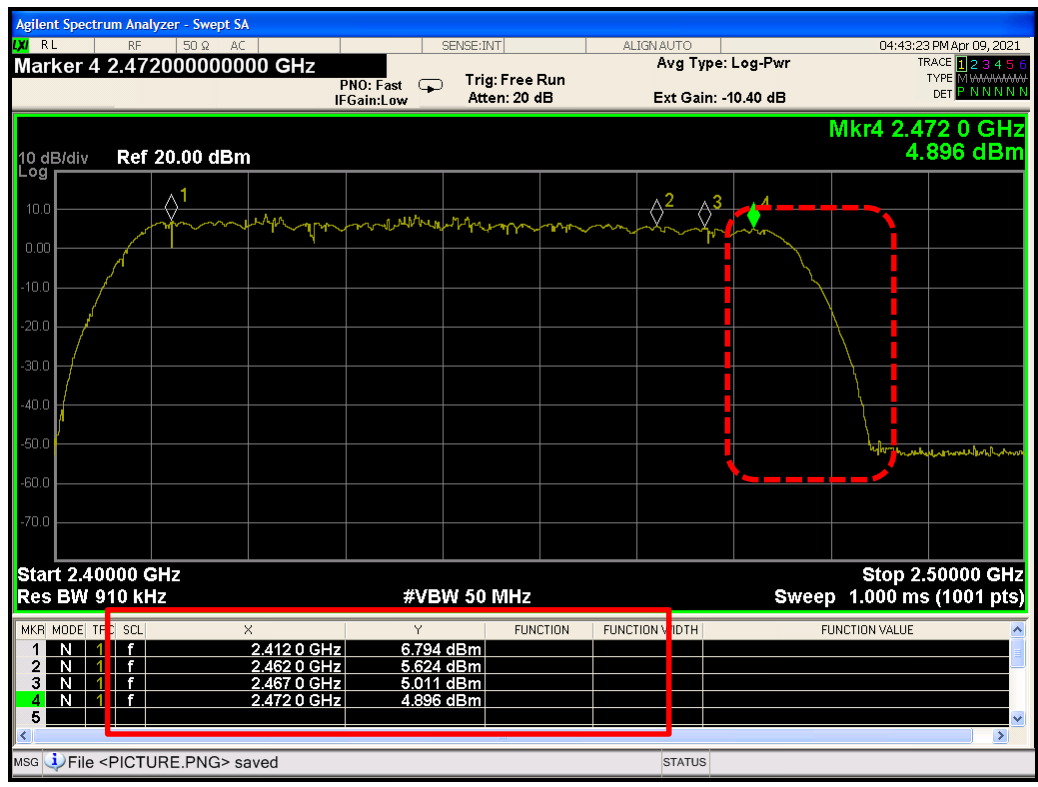
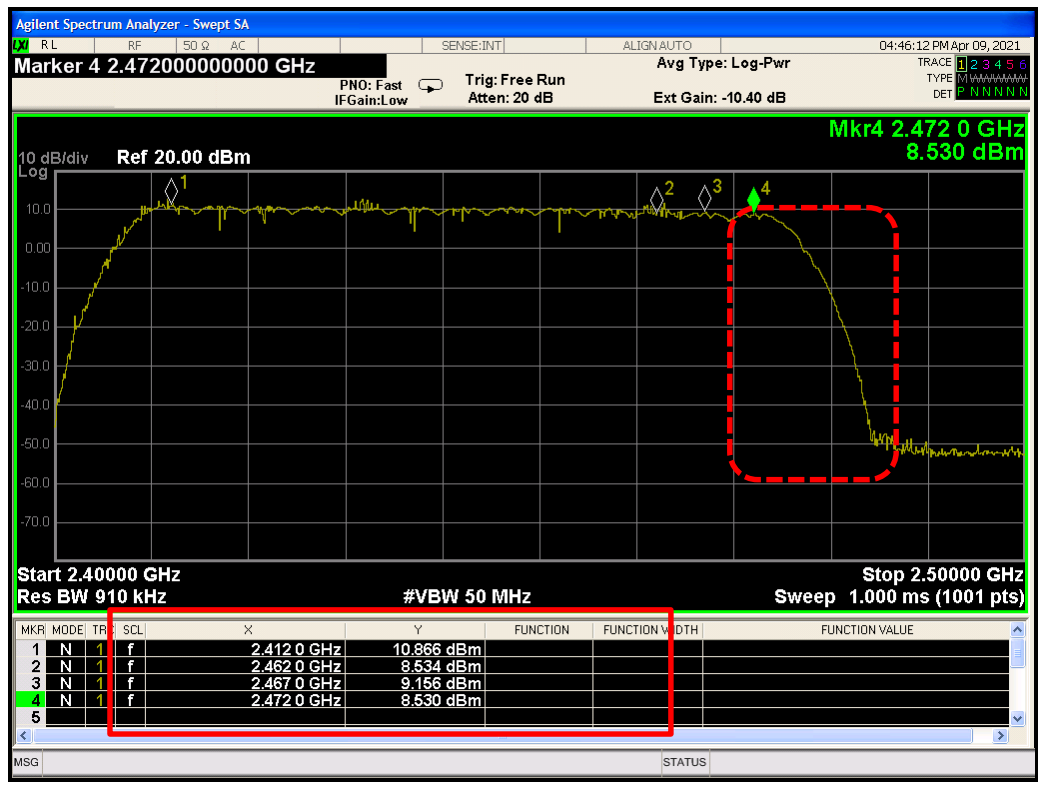
1-11ch = Enabled
 12-13ch = Disabled
 ⇒ Operation Check Result = OK

1-11ch = Enabled
 12-13ch = Disabled
 ⇒ Operation Check Result = OK

◆ Scan Waveform on 2.4GHz(Country Code=JP, FR)

[CC="JP"]

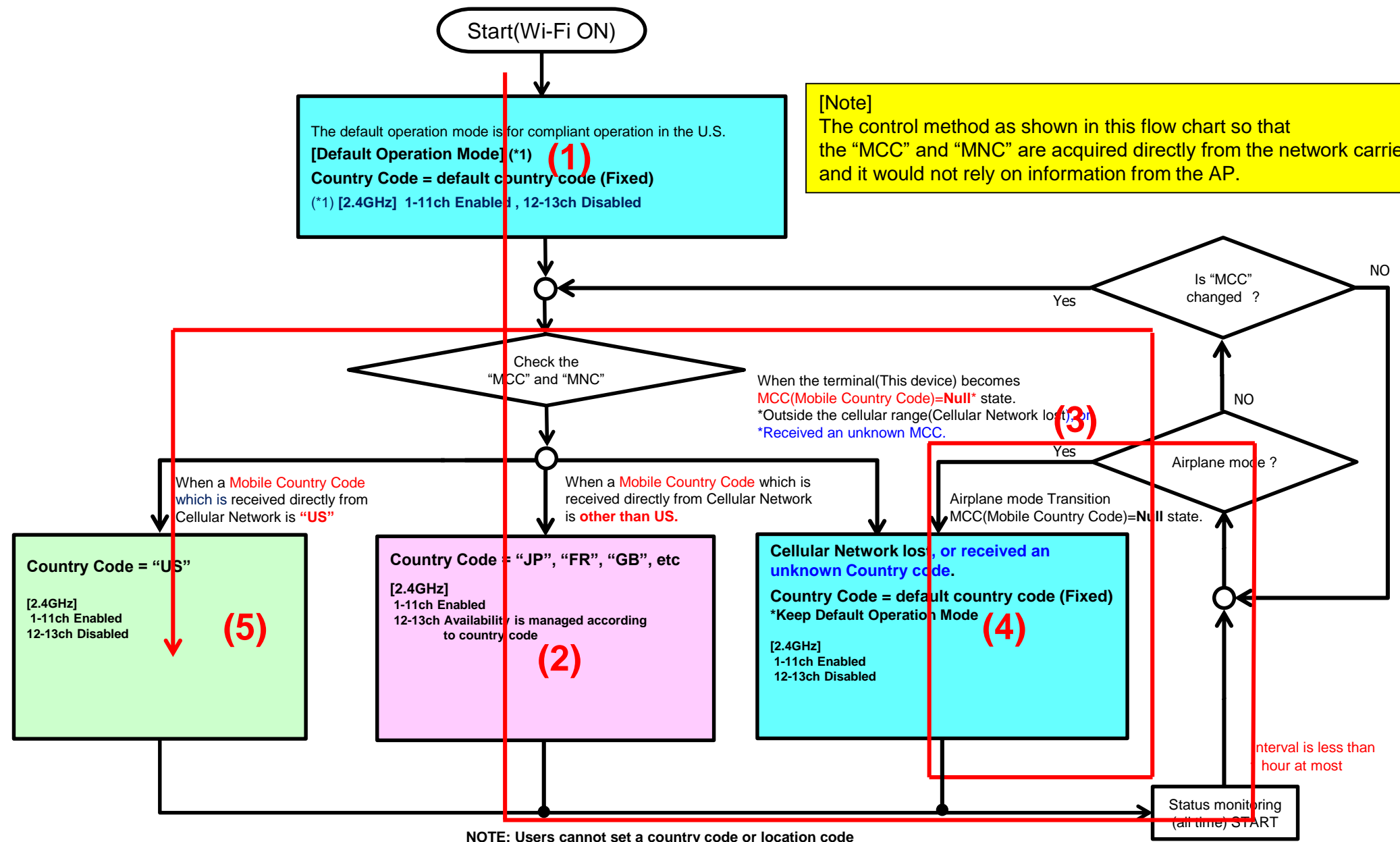
[CC="FR"]



1-13ch = Enabled
 ⇒ Operation Check Result = OK

1-13ch = Enabled
 ⇒ Operation Check Result = OK

◆ Channel Control Algorithm Flowchart



◆ Verification Pattern (Operation check result)

Check Result = OK

```
result.txt - メモ帳
ファイル(F) 編集(E) 書式(O) 表示(V) ヘルプ(H)
05-10 13:19:17.028 10121 10121 D wpa_supplicant: wpa_driver_nl80211_driver_cmd COUNTRY 03 len = 0, 4096
05-10 13:19:17.040 10121 10121 D wpa_supplicant: nl80211: Regulatory information - country=03 (DFS-FCC)
(1) 1; Terminal start-up and Wi-Fi startup, Start default Country Code (ex."03" : Ch-12,13 are disabled)
    Effective frequency range = 2402-2472MHz(1-11ch=enable,12-13ch=disable)
05-10 13:19:26.224 2828 2828 D LocaleTracker-0: updateLocale: countryIso = jp, countryIsoDebugInfo = OperatorNumeric
(44020): MccTable.countryCodeForMcc("440")
05-10 13:19:26.228 10121 10121 D wpa_supplicant: wpa_driver_nl80211_driver_cmd COUNTRY JP len = 0, 4096
05-10 13:19:26.234 10121 10121 D wpa_supplicant: nl80211: Regulatory information - country=JP
(2) 2; Get MCC from Cellular network (Japan Operator-B),
    Change Country Code(default country code -> "JP") (Ch-12,13 are enabled)
    Effective frequency range = 2402-2482MHz(1-13ch=enable)
05-10 13:19:29.235 2872 2872 I QCC:EventManager: Airplane mode is turned ON
05-10 13:19:30.524 2828 2828 D LocaleTracker-0: updateLocale: Change the current country to "", countryIsoDebugInfo =
OperatorNumeric(44020): MccTable.countryCodeForMcc("440"), mCellInfoList = null
(3) 3; Airplane mode transition (MCC : "JP"->"NULL")
05-10 13:19:33.382 11191 11191 D wpa_supplicant: wpa_driver_nl80211_driver_cmd COUNTRY 03 len = 0, 4096
05-10 13:19:33.571 11191 11191 D wpa_supplicant: nl80211: Regulatory information - country=03 (DFS-FCC)
(4) 4; Lost MCC from Cellular network (with Outside of the Cellular network),
    Change Country Code ("JP" -> default country code) (Ch-12,13 are disabled)
    Effective frequency range = 2402-2472MHz(1-11ch=enable,12-13ch=disable)
05-10 13:19:37.957 2828 2828 D LocaleTracker-0: updateLocale: countryIso = us, countryIsoDebugInfo = OperatorNumeric
(31010): MccTable.countryCodeForMcc("310")
05-10 13:19:37.963 11191 11191 D wpa_supplicant: wpa_driver_nl80211_driver_cmd COUNTRY US len = 0, 4096
05-10 13:19:37.987 11191 11191 D wpa_supplicant: nl80211: Regulatory information - country=US (DFS-FCC)
(5) 5; Airplane mode Release and Get MCC from Cellular network (US Operator-A*) *Base station simulator
    Change Country Code (default country code -> "US")(Ch-12,13 are disabled)
    Effective frequency range = 2402-2472MHz(1-11ch=enable,12-13ch=disable)
```