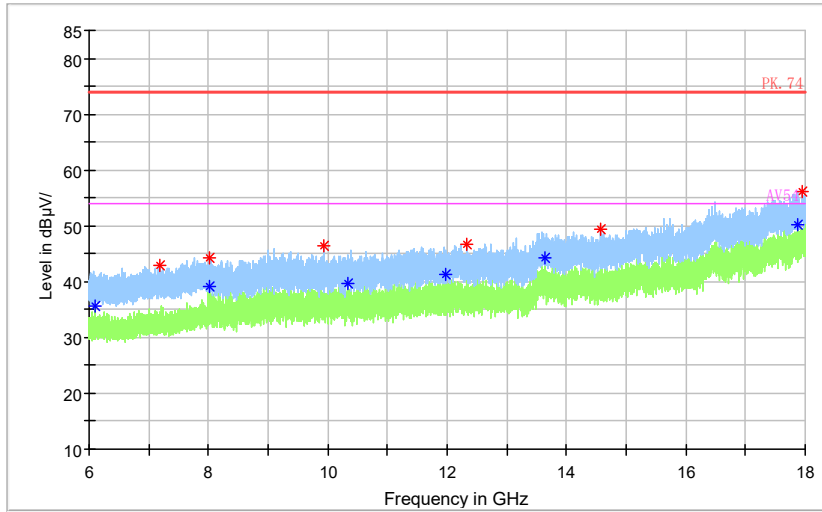


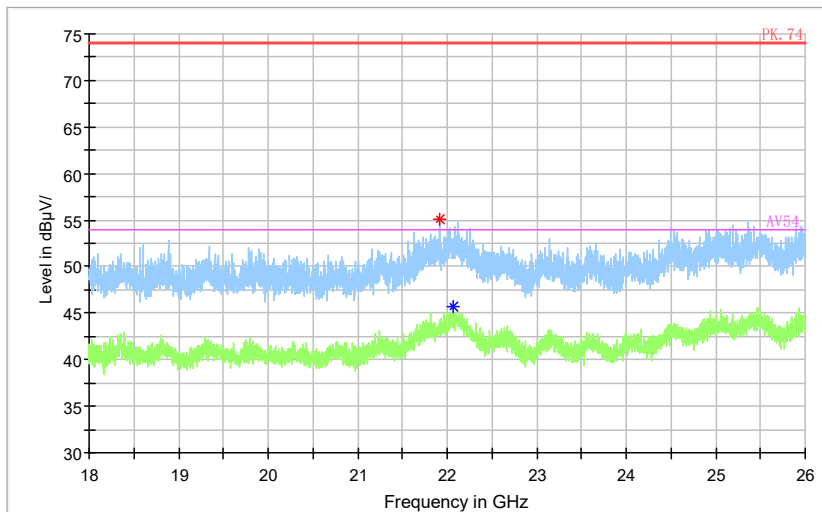
Full Spectrum



— Preview Result 2-AVG — Preview Result 1-PK+ * Critical_Freqs AVG
* Critical_Freqs PK+ — PK.74 * AV54
◆ Final_Result PK+ ◆ Final_Result AVG

Frequency Range: 6GHz -18GHz
Detector: Av mode and PK mode
Modulation type: 802.11g

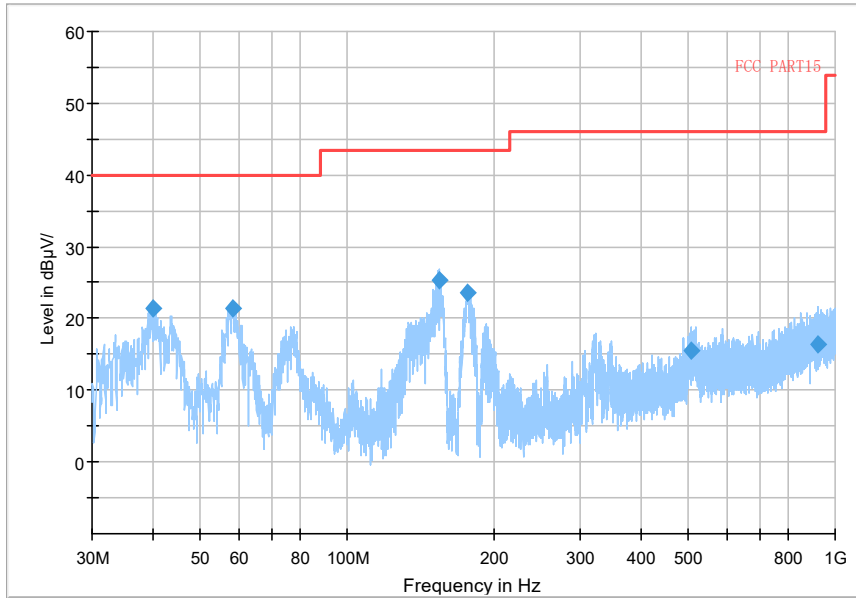
Full Spectrum



— Preview Result 2-AVG — Preview Result 1-PK+ * Critical_Freqs AVG
* Critical_Freqs PK+ — PK.74 * AV54
◆ Final_Result PK+ ◆ Final_Result AVG

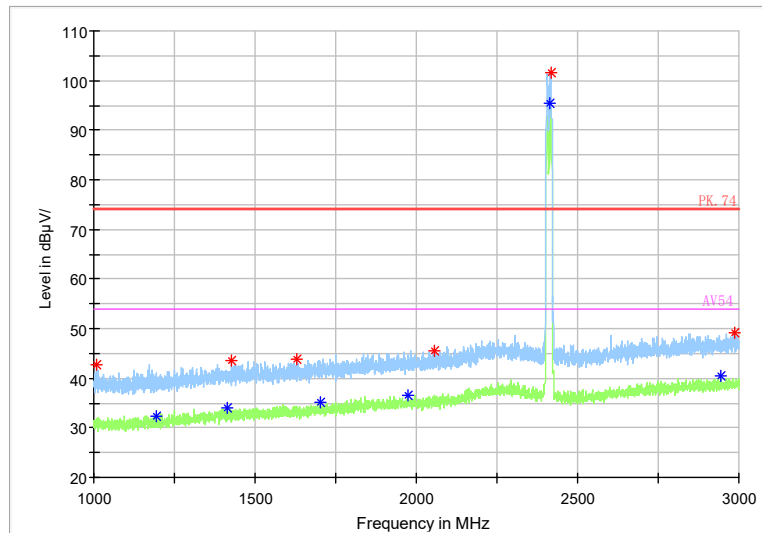
Frequency Range: 18GHz-26GHz
Detector: Av mode and PK mode
Modulation type: 802.11g

Full Spectrum



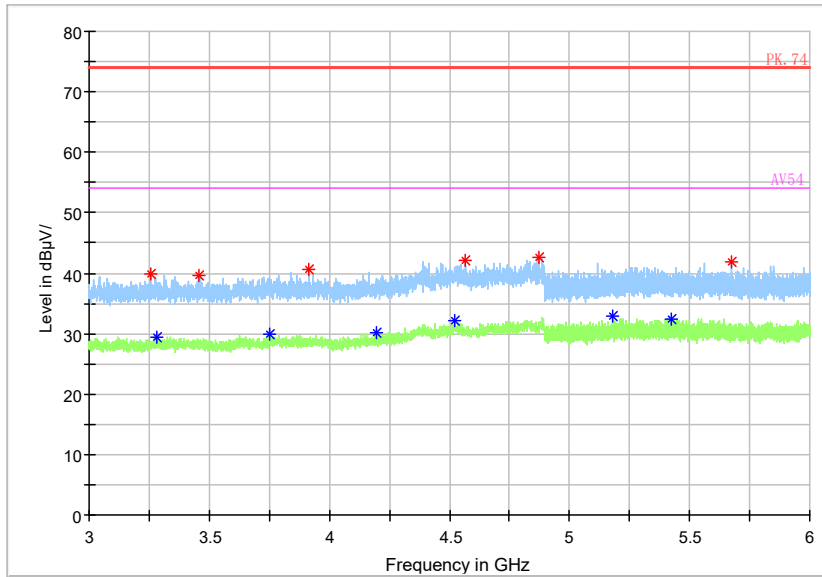
Frequency Range: 30MHz -1GHz
Detector: QP mode
Test Mode: 802.11n(HT20 MIMO)

Full Spectrum



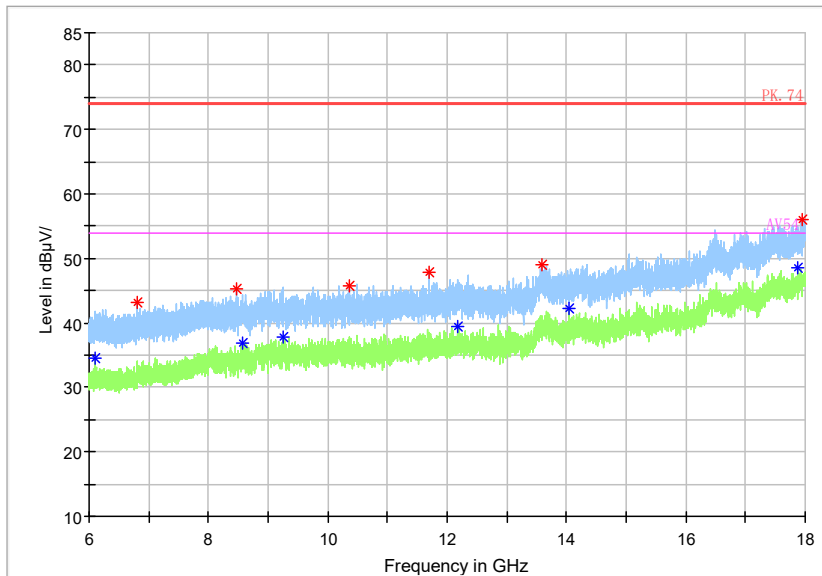
Frequency Range: 1GHz -3GHz
Detector: Av mode and PK mode
Modulation type: 802.11n(HT20 MIMO)

Full Spectrum



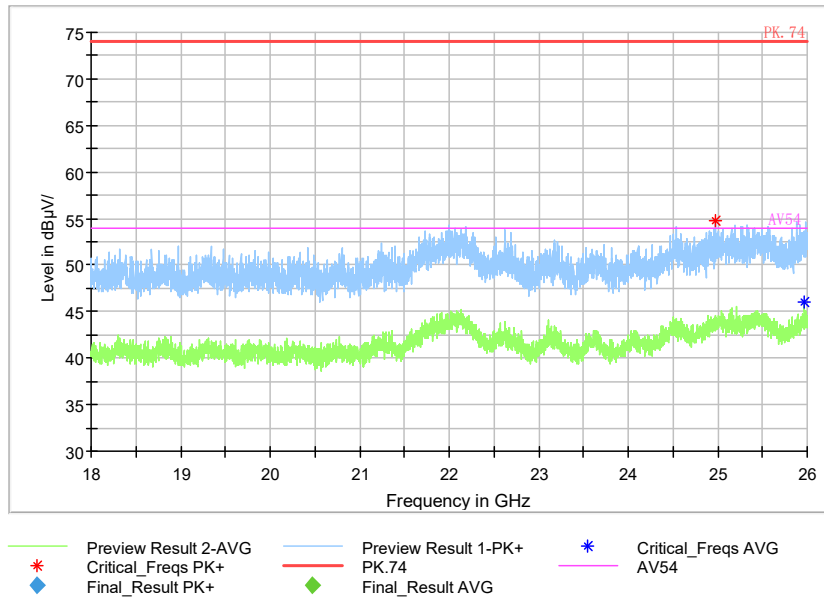
Frequency Range: 3GHz -6GHz
 Detector: Av mode and PK mode
 Modulation type: 802.11n(HT20 MIMO)

Full Spectrum



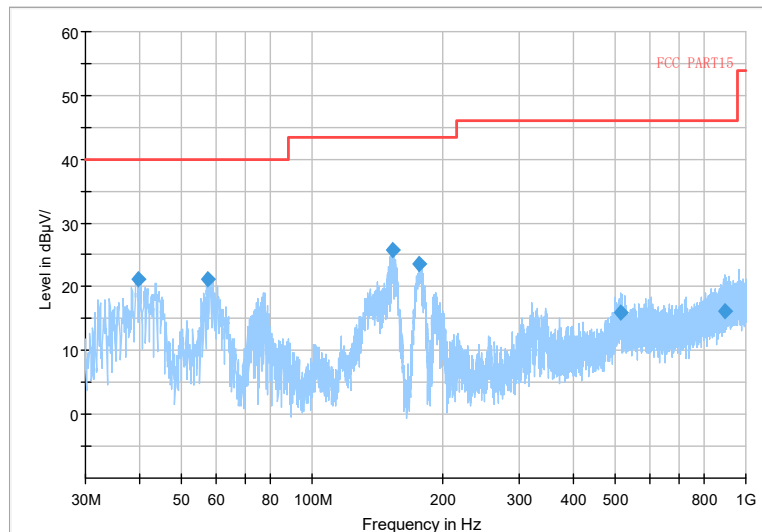
Frequency Range: 6GHz -18GHz
 Detector: Av mode and PK mode
 Modulation type: 802.11n(HT20 MIMO)

Full Spectrum



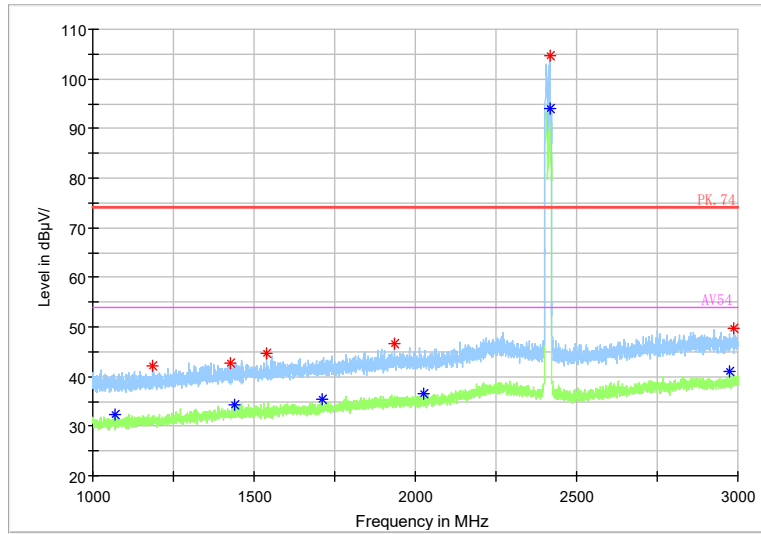
Frequency Range: 18GHz-26GHz
Detector: Av mode and PK mode
Modulation type: 802.11n(HT20 MIMO)

Full Spectrum



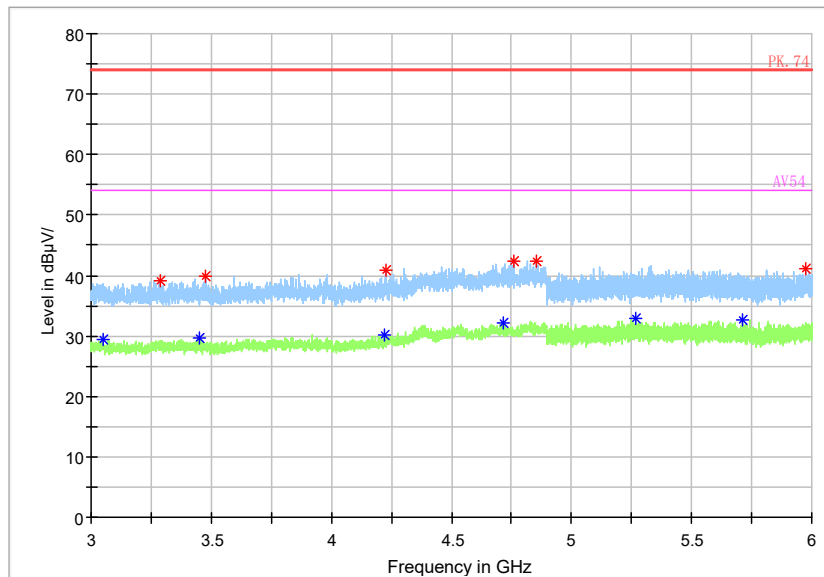
Frequency Range: 30MHz -1GHz
Detector: QP mode
Modulation type: 802.11ax(HE20 MIMO)

Full Spectrum



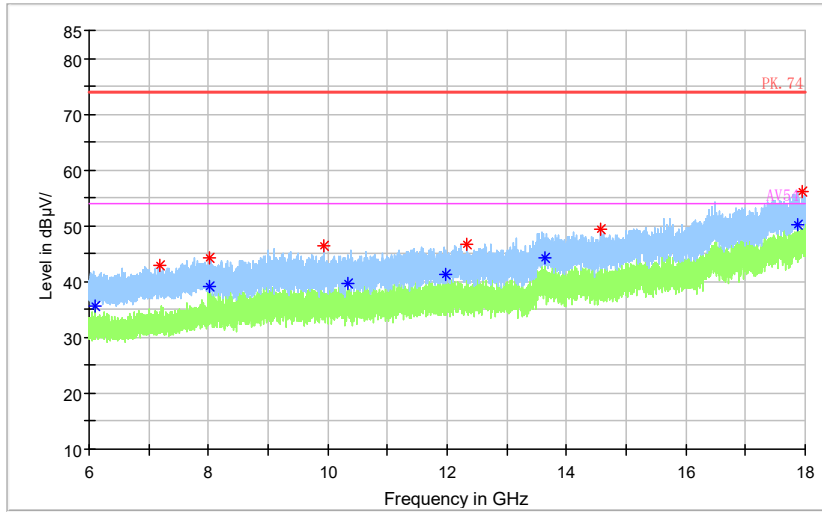
Frequency Range: 1GHz -3GHz
 Detector: Av mode and PK mode
 Modulation type: 802.11ax(HE20 MIMO)

Full Spectrum



Frequency Range: 3GHz -6GHz
 Detector: Av mode and PK mode
 Modulation type: 802.11ax(HE20 MIMO)

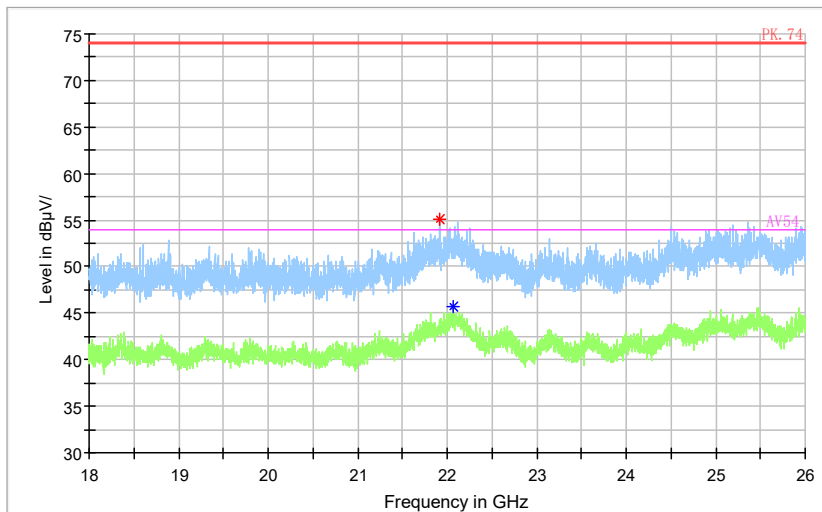
Full Spectrum



—◆ Preview Result 2-AVG — Preview Result 1-PK+ *— Critical_Freqs AVG AV54
*— Critical_Freqs PK+ — PK.74 ◆— Final_Result AVG
◆— Final_Result PK+

Frequency Range: 6GHz -18GHz
Detector: Av mode and PK mode
Modulation type: 802.11ax(HE20 MIMO)

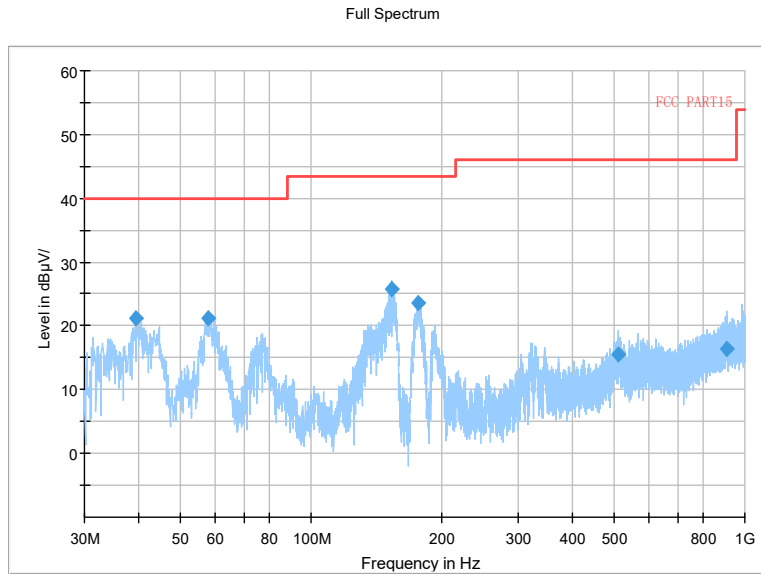
Full Spectrum



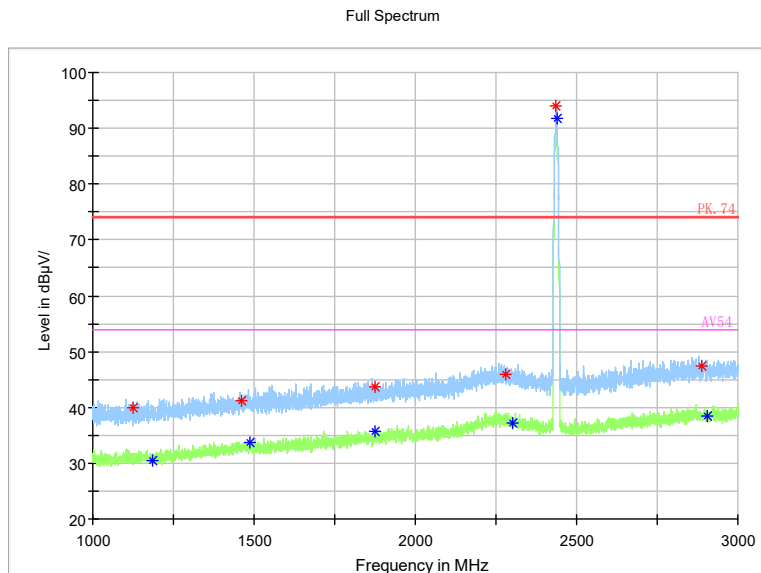
—◆ Preview Result 2-AVG — Preview Result 1-PK+ *— Critical_Freqs AVG AV54
*— Critical_Freqs PK+ — PK.74 ◆— Final_Result AVG
◆— Final_Result PK+

Frequency Range: 18GHz-26GHz
Detector: Av mode and PK mode
Modulation type: 802.11ax(HE20 MIMO)

Carrier frequency (MHz): 2437
 Channel No.:6

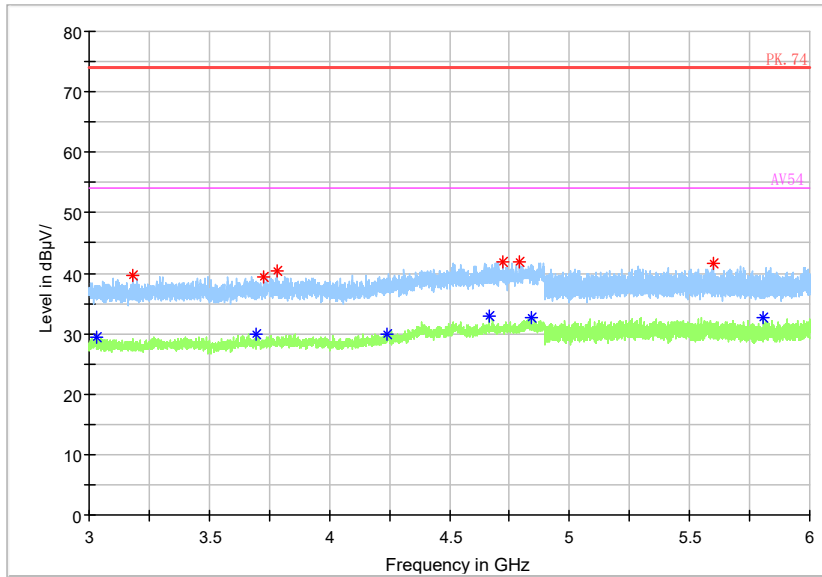


Frequency Range: 30MHz -1GHz
 Detector: QP mode
 Test Mode: 802.11b



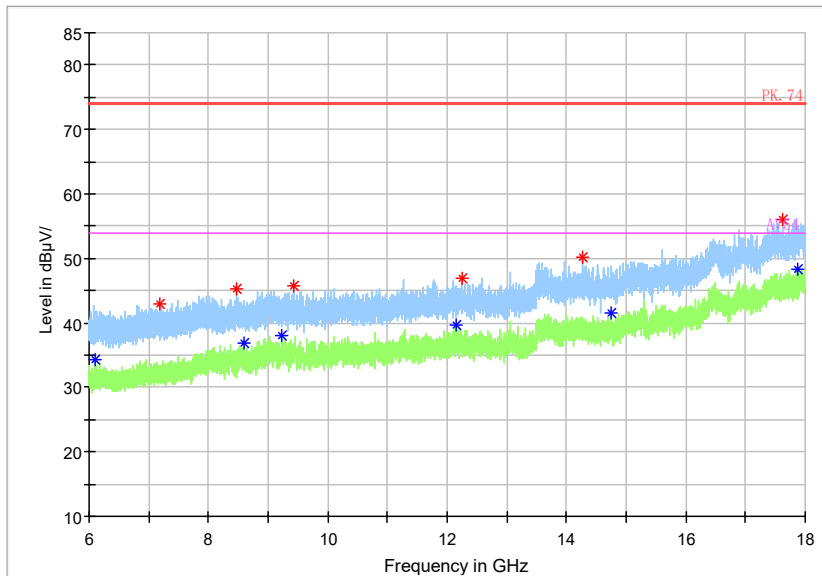
Frequency Range: 1GHz -3GHz
 Detector: Av mode and PK mode
 Modulation type: 802.11b

Full Spectrum



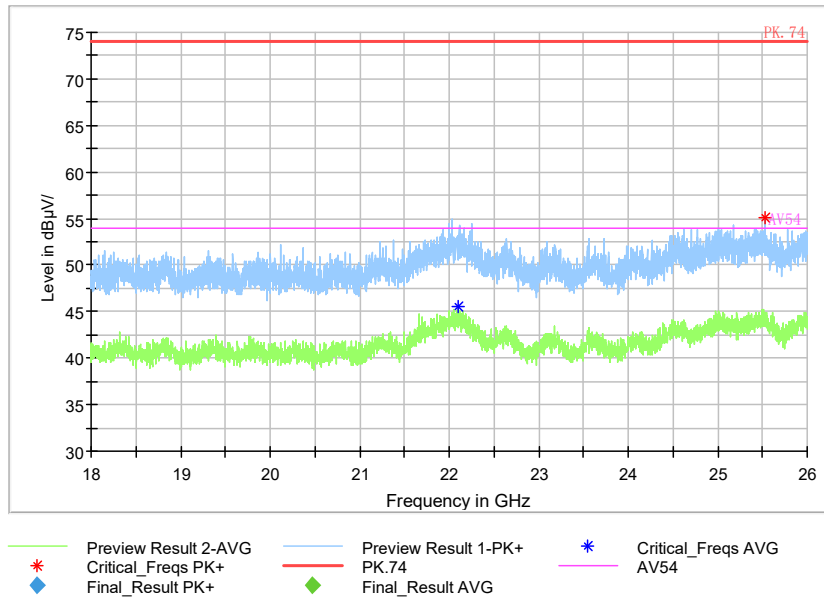
Frequency Range: 3GHz -6GHz
 Detector: Av mode and PK mode
 Modulation type: 802.11b

Full Spectrum



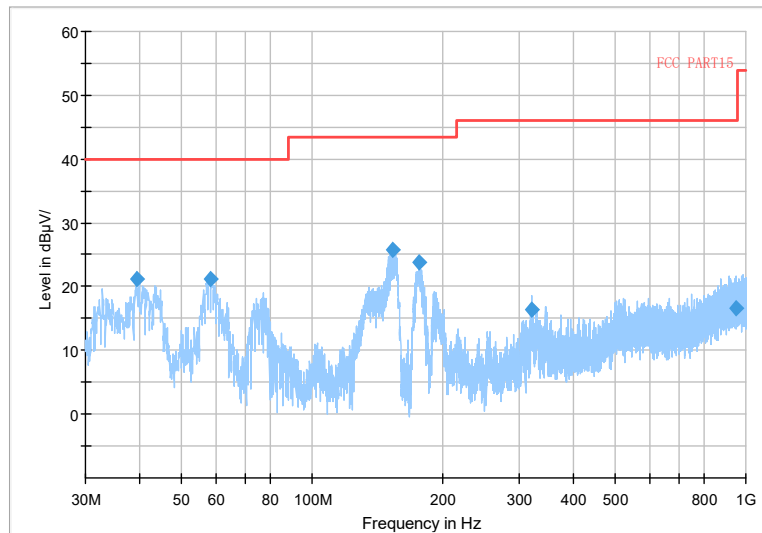
Frequency Range: 6GHz -18GHz
 Detector: Av mode and PK mode
 Modulation type: 802.11b

Full Spectrum



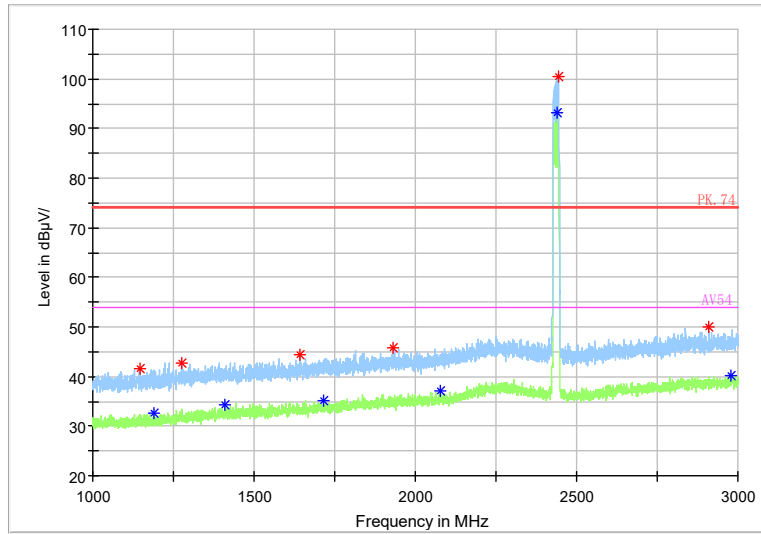
Frequency Range: 18GHz-26GHz
Detector: Av mode and PK mode
Modulation type: 802.11b

Full Spectrum



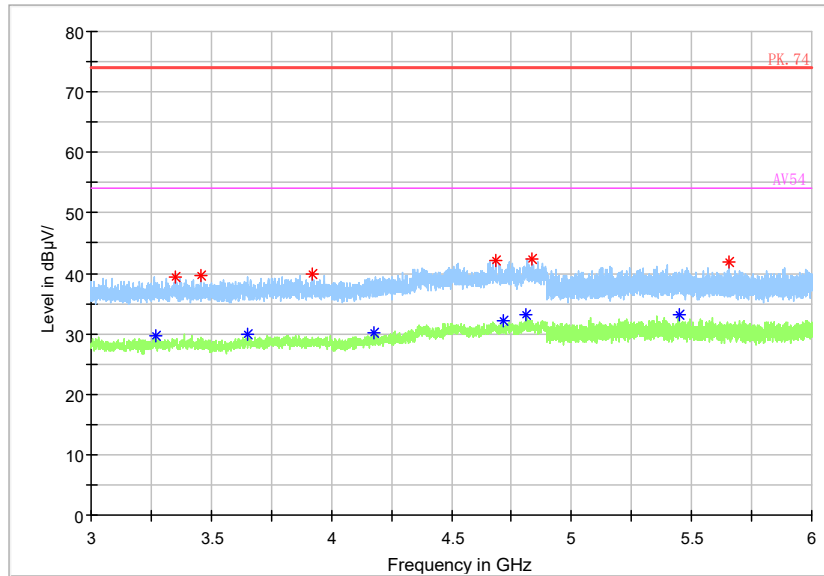
Frequency Range: 30MHz -1GHz
Detector: QP mode
Modulation type: 802.11g

Full Spectrum



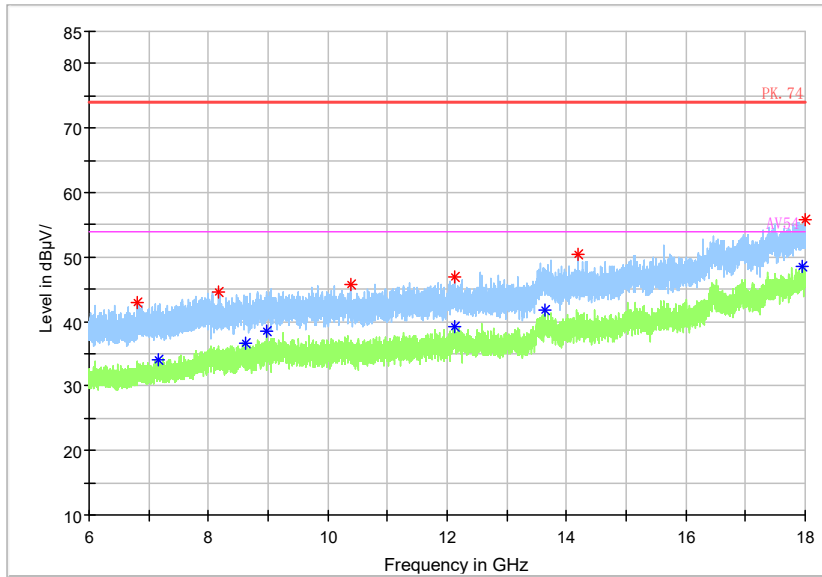
Frequency Range: 1GHz -3GHz
Detector: Av mode and PK mode
Modulation type: 802.11g

Full Spectrum



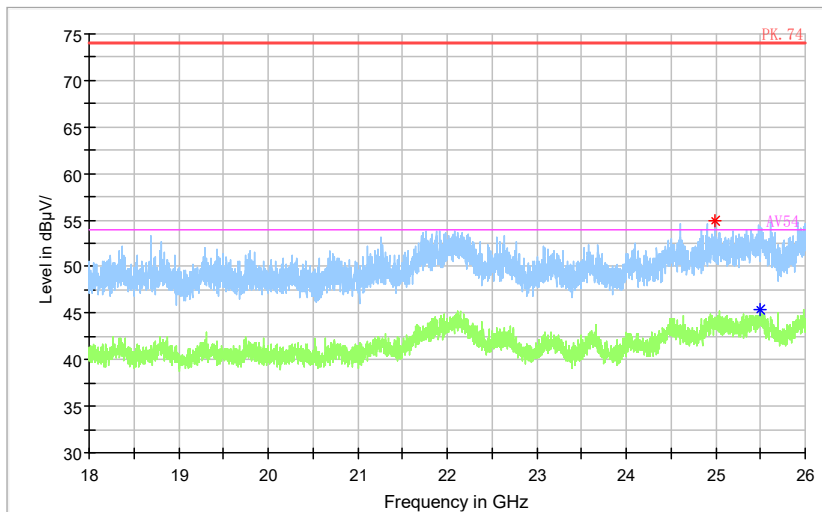
Frequency Range: 3GHz -6GHz
Detector: Av mode and PK mode
Modulation type: 802.11g

Full Spectrum



Frequency Range: 6GHz -18GHz
 Detector: Av mode and PK mode
 Modulation type: 802.11g

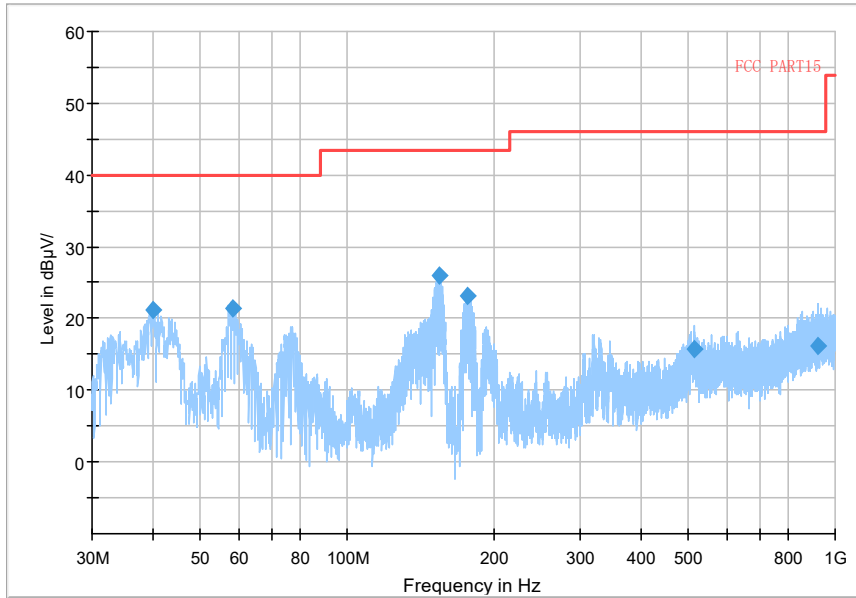
Full Spectrum



- Preview Result 2-AVG
- Preview Result 1-PK+
- * Critical_Freqs PK+
- PK.74
- * Critical_Freqs AVG
- ◆ Final_Result PK+
- ◆ Final_Result AVG
- AV54

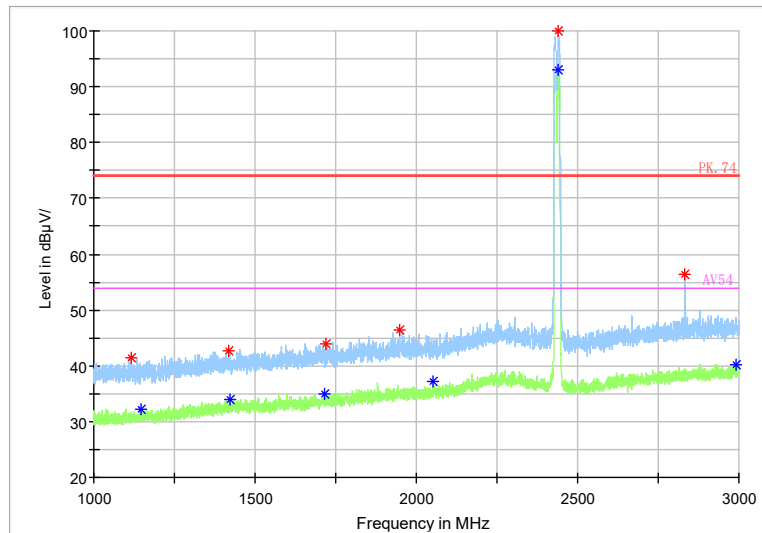
Frequency Range: 18GHz-26GHz
 Detector: Av mode and PK mode
 Modulation type: 802.11g

Full Spectrum



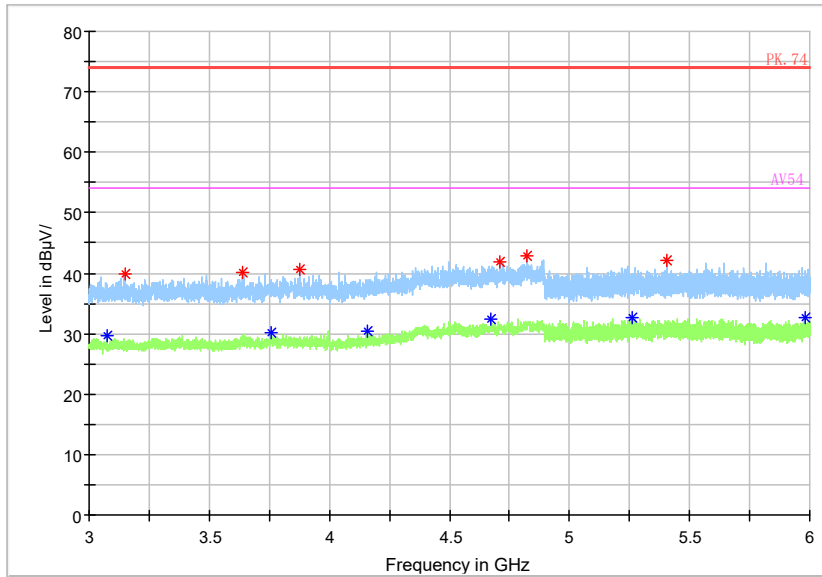
Frequency Range: 30MHz -1GHz
 Detector: QP mode
 Test Mode: 802.11n(HT20 MIMO)

Full Spectrum



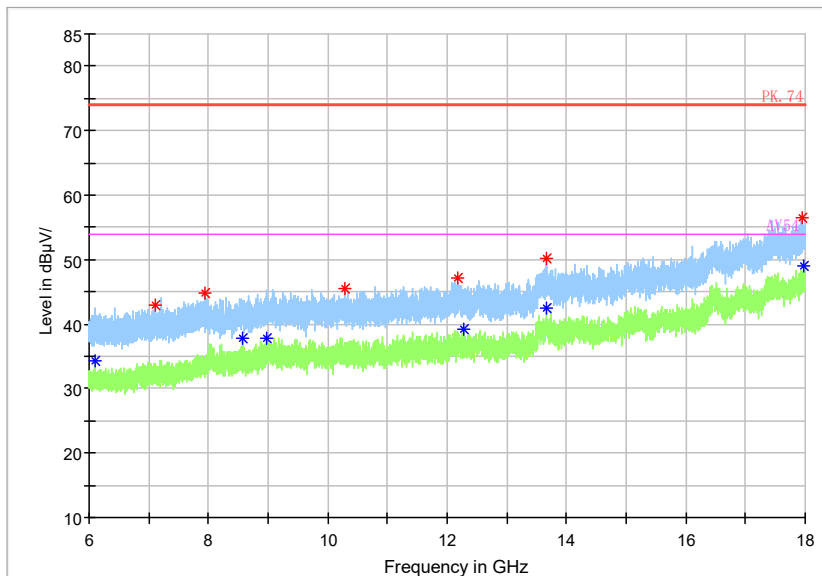
Frequency Range: 1GHz -3GHz
 Detector: Av mode and PK mode
 Modulation type: 802.11n(HT20 MIMO)

Full Spectrum



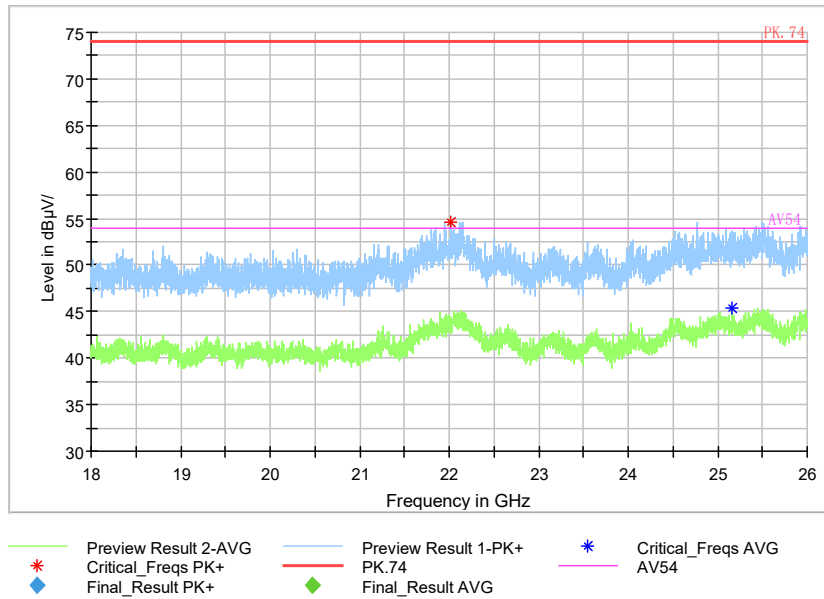
Frequency Range: 3GHz -6GHz
 Detector: Av mode and PK mode
 Modulation type: 802.11n(HT20 MIMO)

Full Spectrum



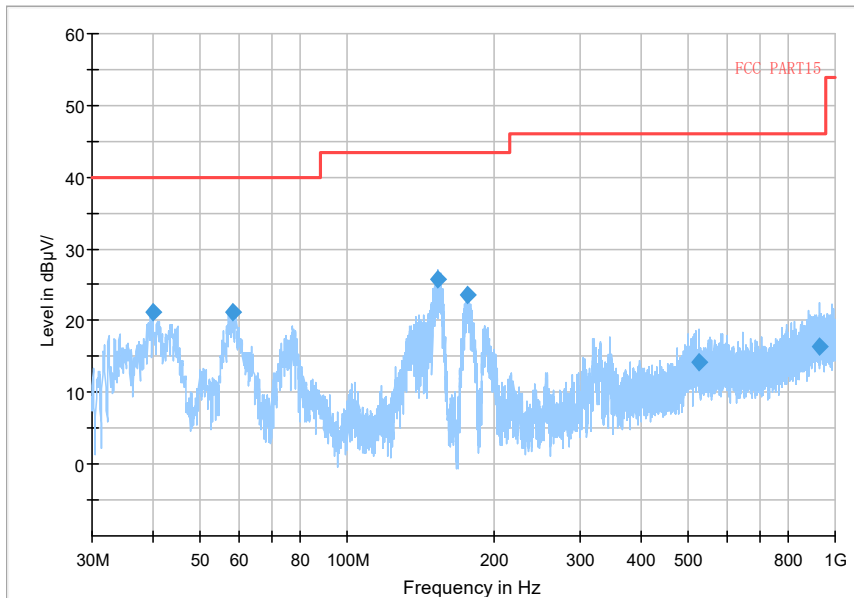
Frequency Range: 6GHz -18GHz
 Detector: Av mode and PK mode
 Modulation type: 802.11n(HT20 MIMO)

Full Spectrum



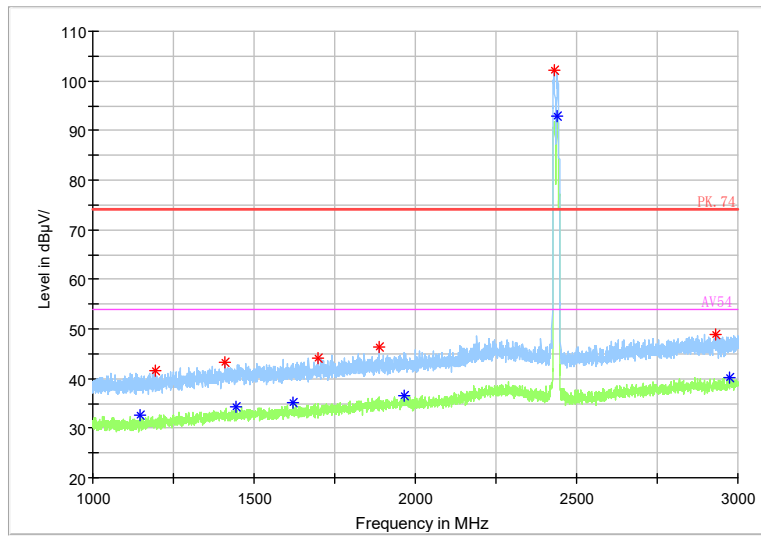
Frequency Range: 18GHz-26GHz
Detector: Av mode and PK mode
Modulation type: 802.11n(HT20 MIMO)

Full Spectrum



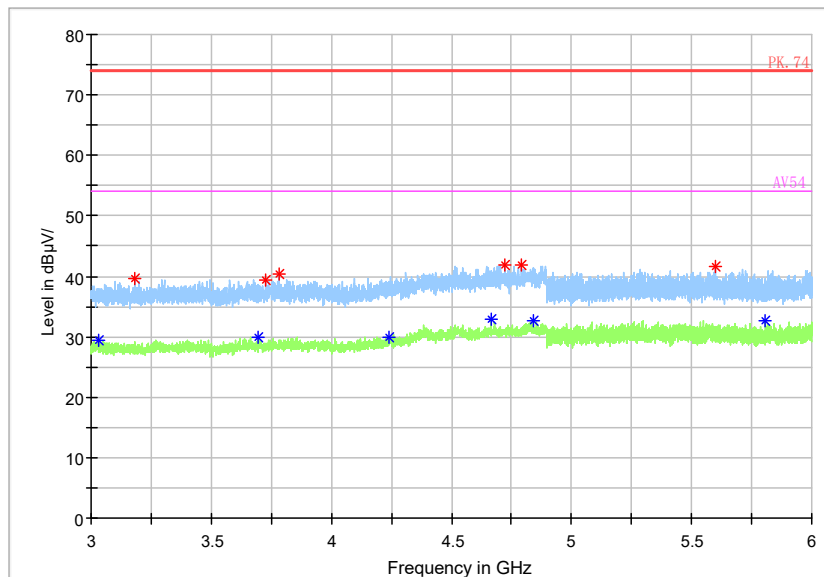
Frequency Range: 30MHz -1GHz
Detector: QP mode
Test Mode: 802.11 ax(HE20)

Full Spectrum



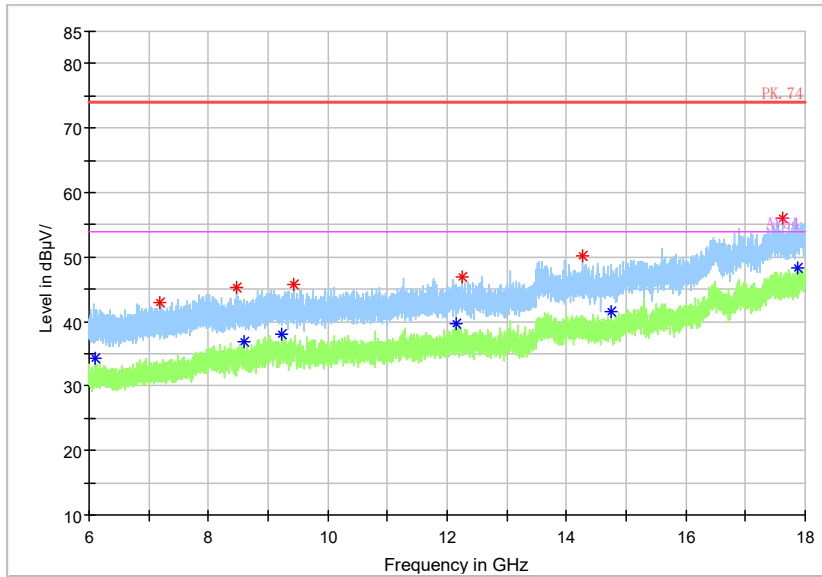
Frequency Range: 1GHz -3GHz
Detector: Av mode and PK mode
Modulation type: 802.11 ax(HE20 MIMO)

Full Spectrum



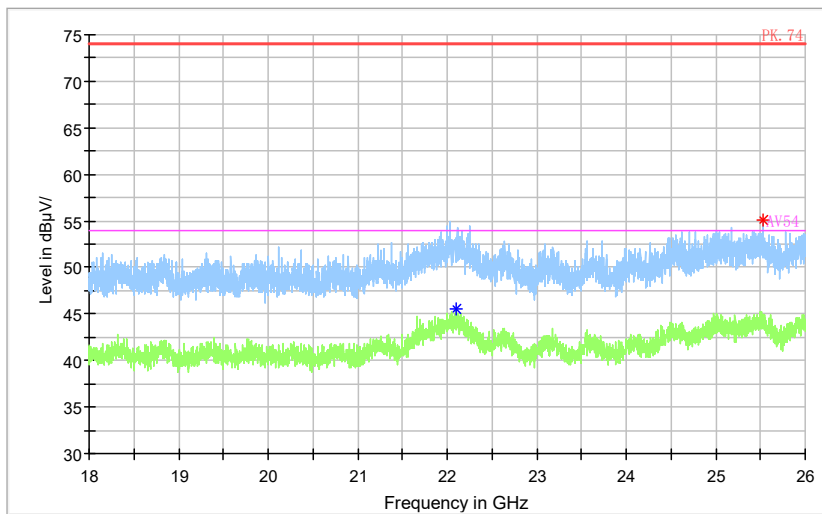
Frequency Range: 3GHz -6GHz
Detector: Av mode and PK mode
Modulation type: 802.11 ax(HE20 MIMO)

Full Spectrum



Frequency Range: 6GHz -18GHz
Detector: Av mode and PK mode
Modulation type: 802.11 ax(HE20 MIMO)

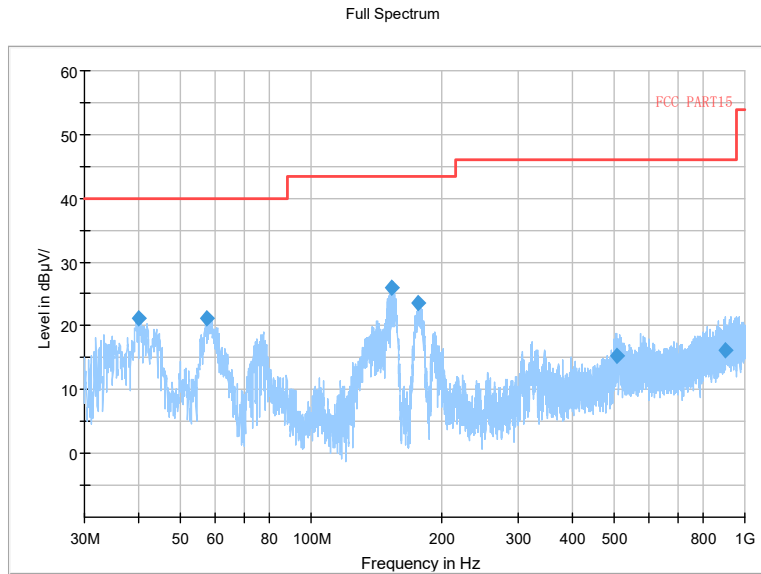
Full Spectrum



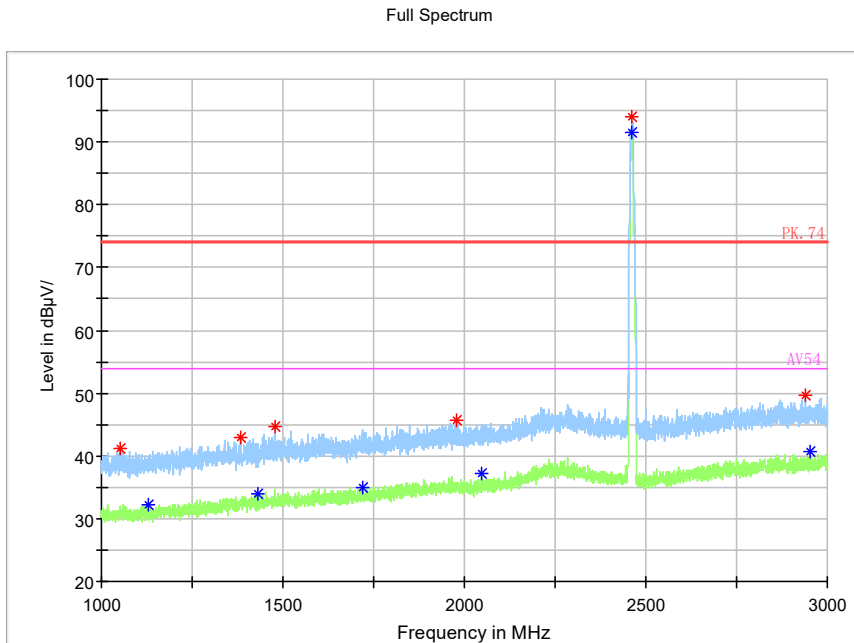
- Preview Result 2-AVG
- Preview Result 1-PK+
- * Critical_Freqs PK+
- PK.74
- AV54
- ◆ Final_Result PK+
- ◆ Final_Result AVG
- * Critical_Freqs AVG

Frequency Range: 18GHz-26GHz
Detector: Av mode and PK mode
Modulation type: 802.11ax(HE20 MIMO)

Carrier frequency (MHz): 2462
 Channel No.:11

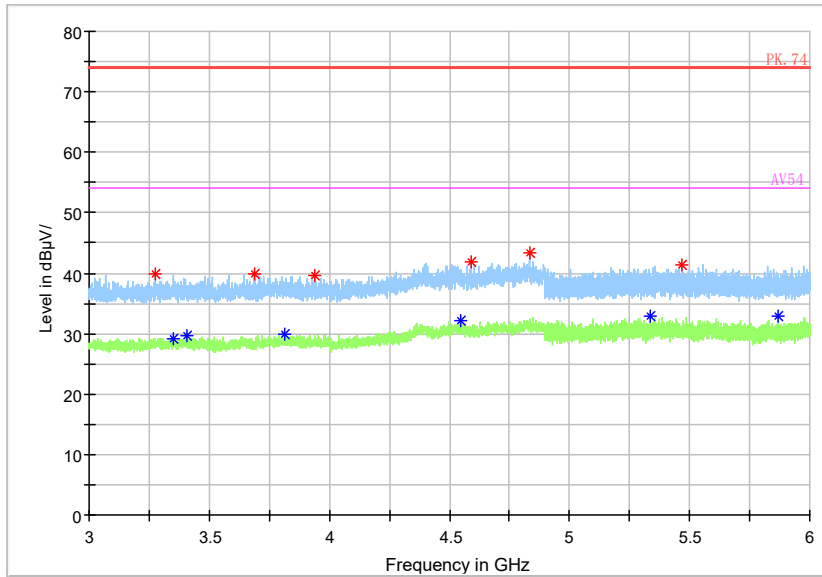


Frequency Range: 30MHz -1GHz
 Detector: QP mode
 Test Mode: 802.11b



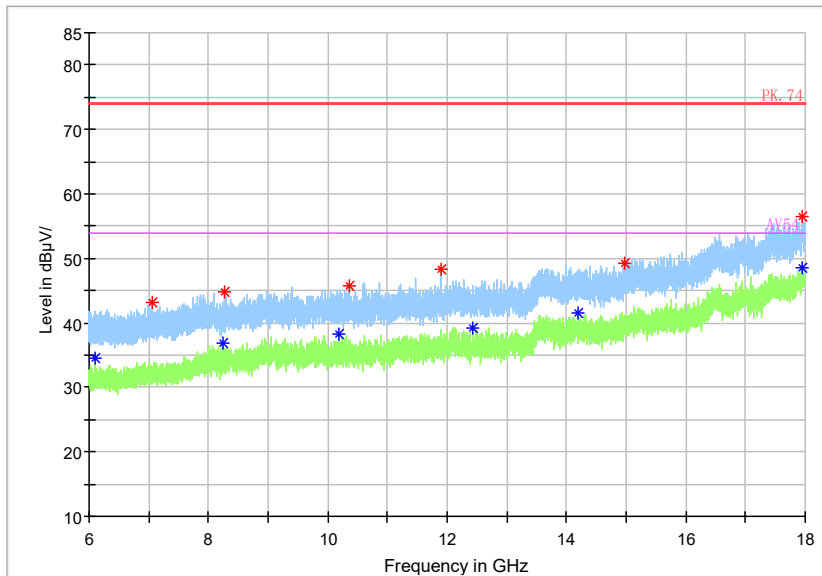
Frequency Range: 1GHz -3GHz
 Detector: Av mode and PK mode
 Modulation type: 802.11b

Full Spectrum



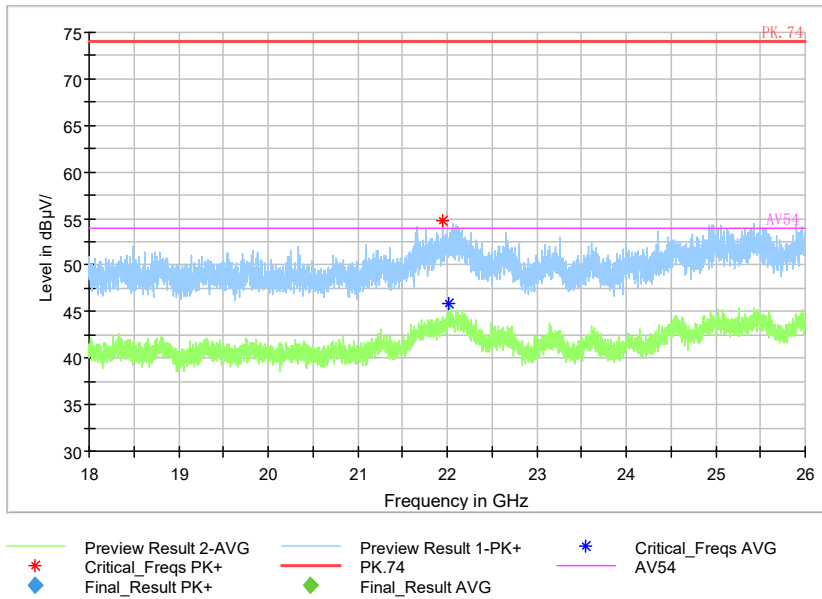
Frequency Range: 3GHz -6GHz
 Detector: Av mode and PK mode
 Modulation type: 802.11b

Full Spectrum



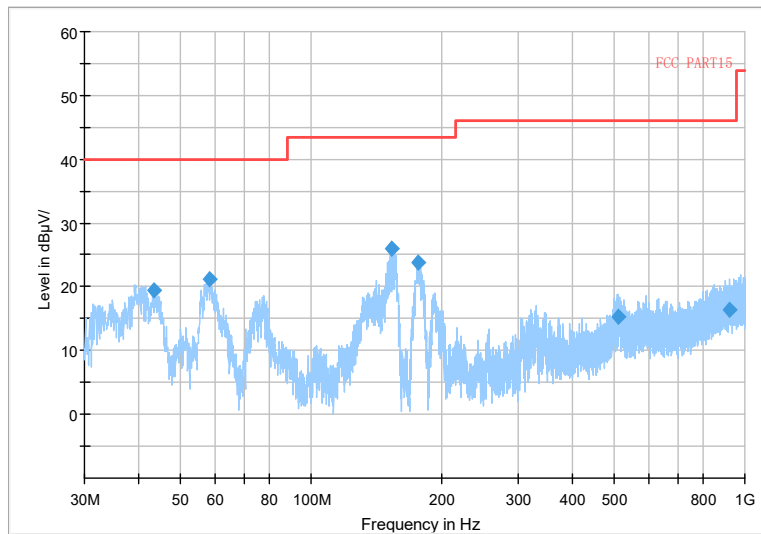
Frequency Range: 6GHz -18GHz
 Detector: Av mode and PK mode
 Modulation type: 802.11b

Full Spectrum



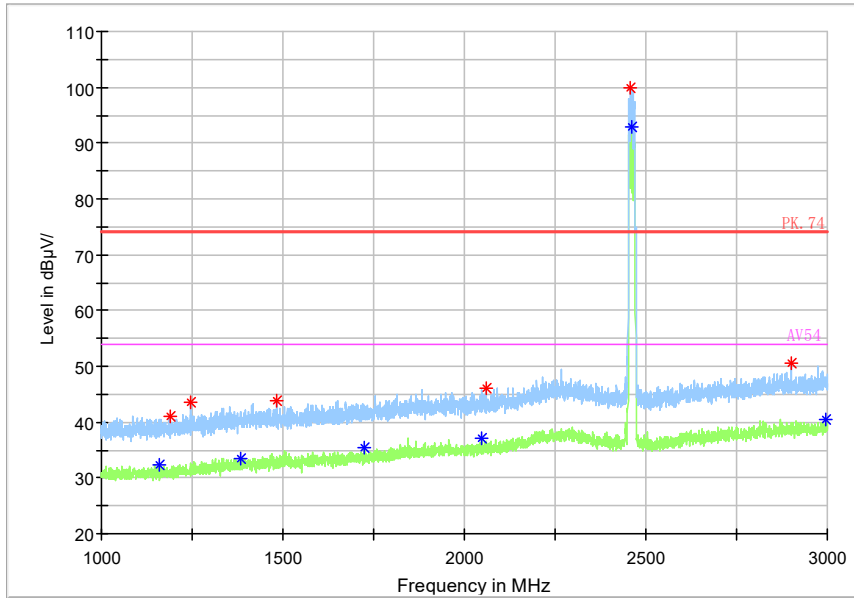
Frequency Range: 18GHz-26GHz
Detector: Av mode and PK mode
Modulation type: 802.11b

Full Spectrum



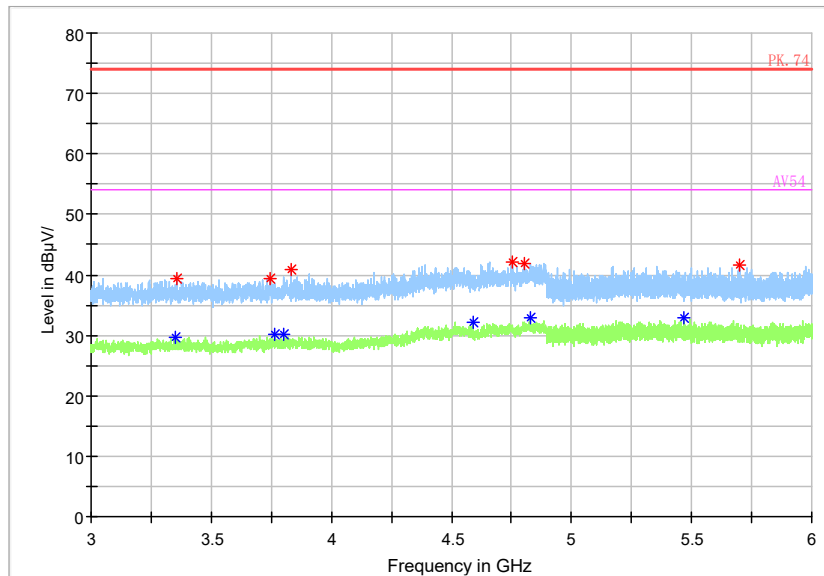
Frequency Range: 30MHz -1GHz
Detector: QP mode
Modulation type: 802.11g

Full Spectrum



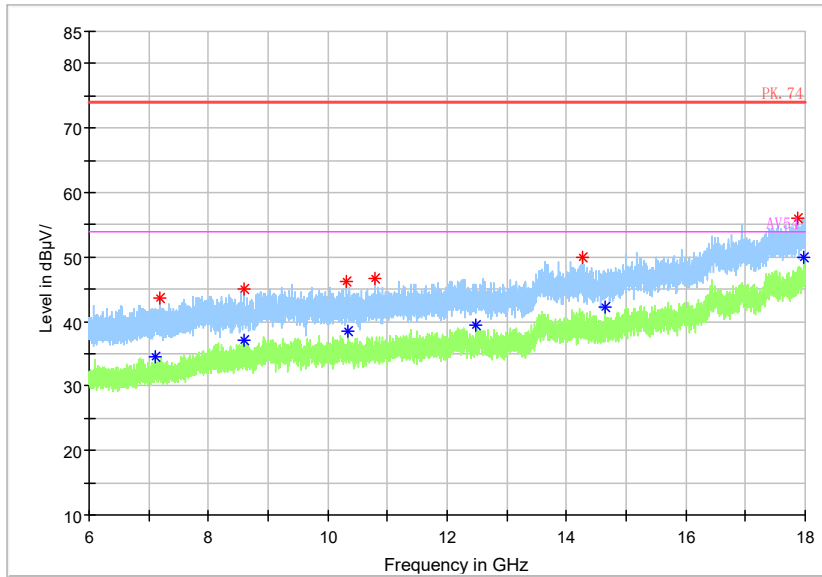
Frequency Range: 1GHz -3GHz
 Detector: Av mode and PK mode
 Modulation type: 802.11g

Full Spectrum



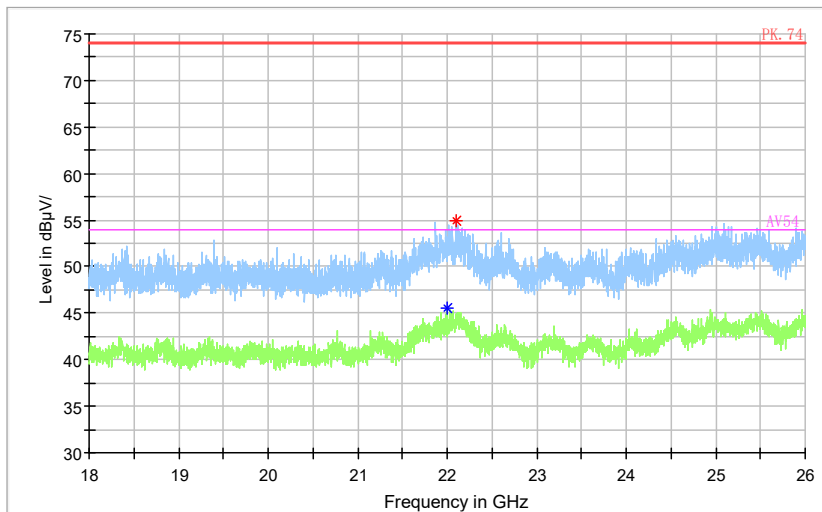
Frequency Range: 3GHz -6GHz
 Detector: Av mode and PK mode
 Modulation type: 802.11g

Full Spectrum



Frequency Range: 6GHz -18GHz
Detector: Av mode and PK mode
Modulation type: 802.11g

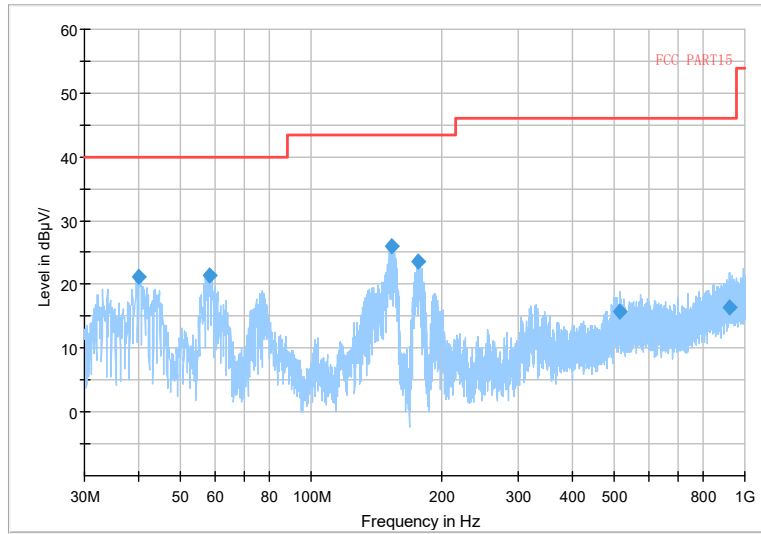
Full Spectrum



- Preview Result 2-AVG
- Preview Result 1-PK+
- PK.74
- Critical_Freqs AVG AV54
- * Critical_Freqs PK+
- ◆ Final_Result AVG
- ◆ Final_Result PK+

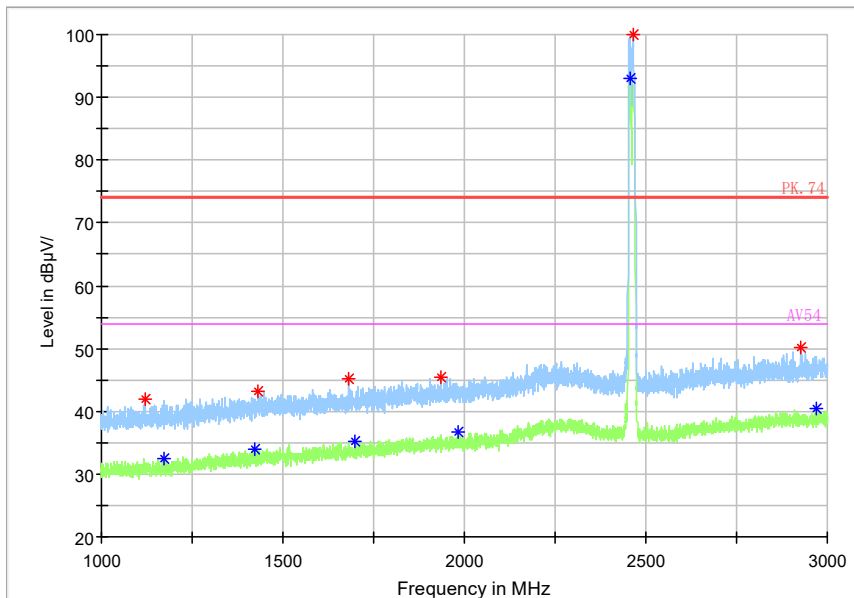
Frequency Range: 18GHz-26GHz
Detector: Av mode and PK mode
Modulation type: 802.11g

Full Spectrum



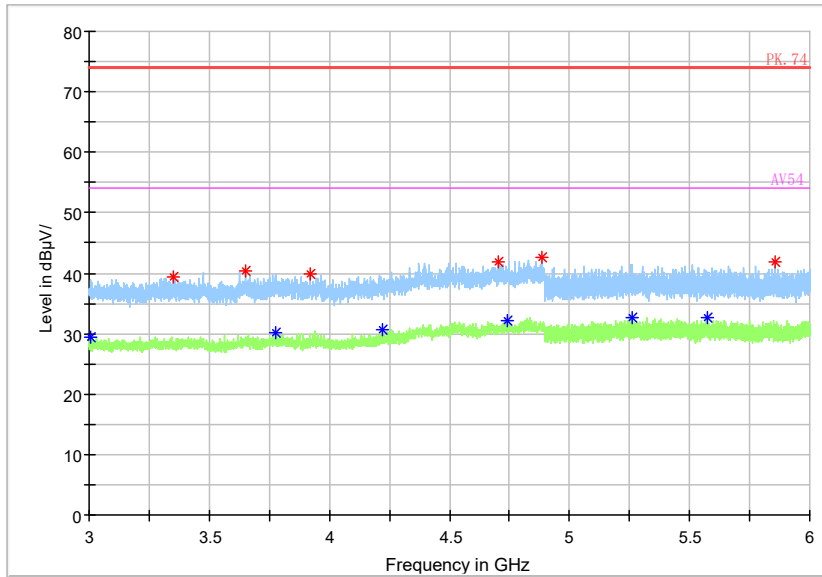
Frequency Range: 30MHz -1GHz
 Detector: QP mode
 Test Mode: 802.11n(HT20 MIMO)

Full Spectrum



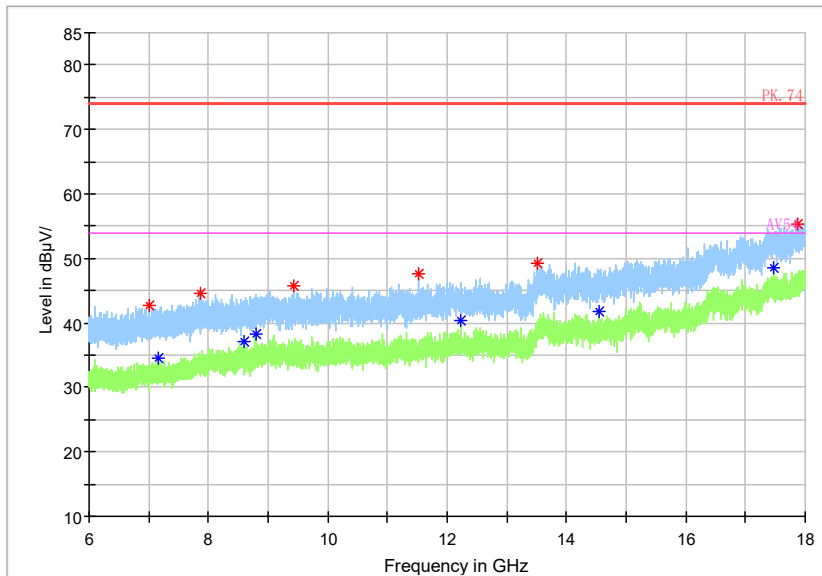
Frequency Range: 1GHz -3GHz
 Detector: Av mode and PK mode
 Modulation type: 802.11n(HT20 MIMO)

Full Spectrum



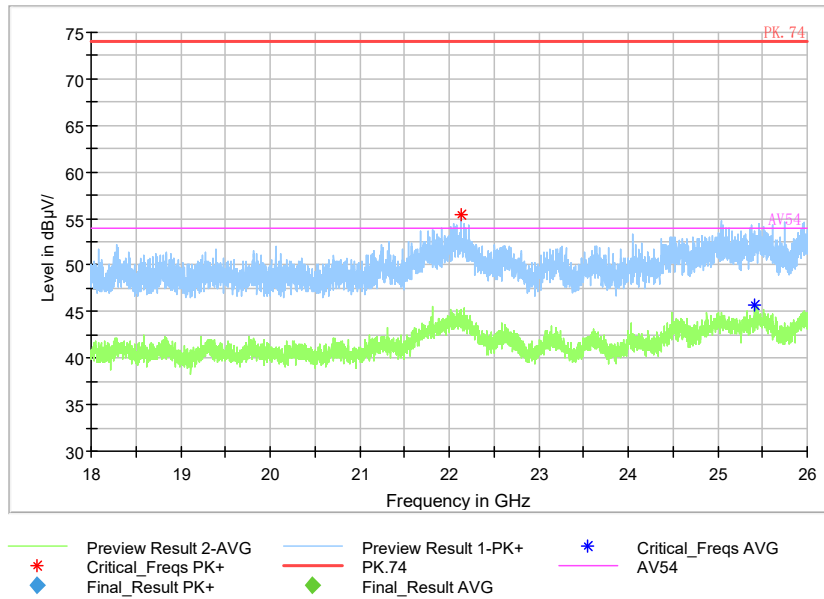
Frequency Range: 3GHz -6GHz
Detector: Av mode and PK mode
Modulation type: 802.11n(HT20 MIMO)

Full Spectrum



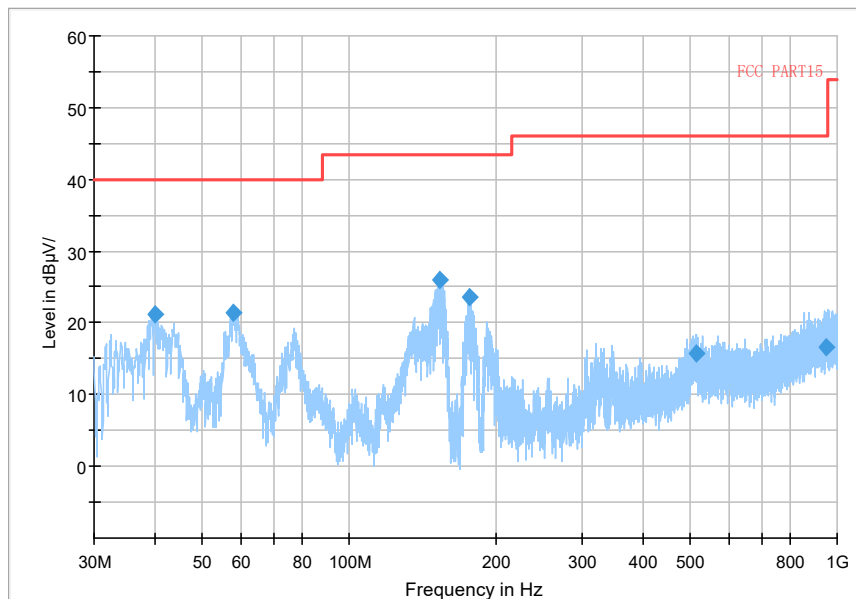
Frequency Range: 6GHz -18GHz
Detector: Av mode and PK mode
Modulation type: 802.11n(HT20 MIMO)

Full Spectrum



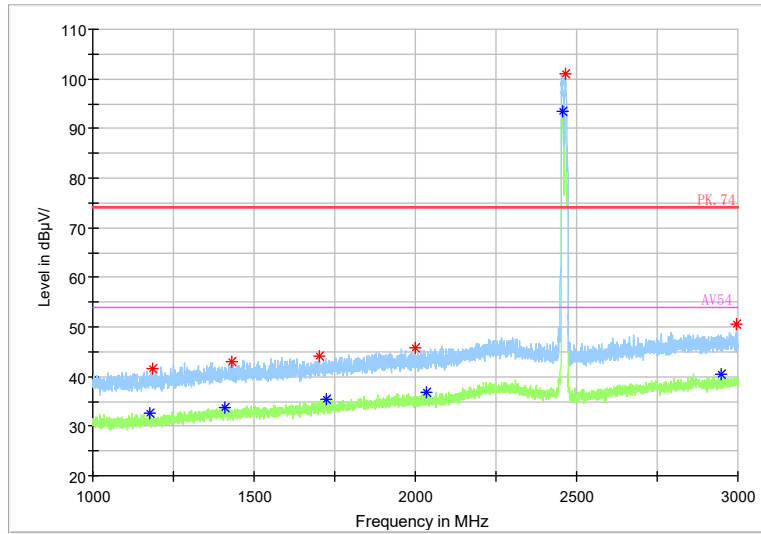
Frequency Range: 18GHz-26GHz
 Detector: Av mode and PK mode
 Modulation type: 802.11n(HT20 MIMO)

Full Spectrum



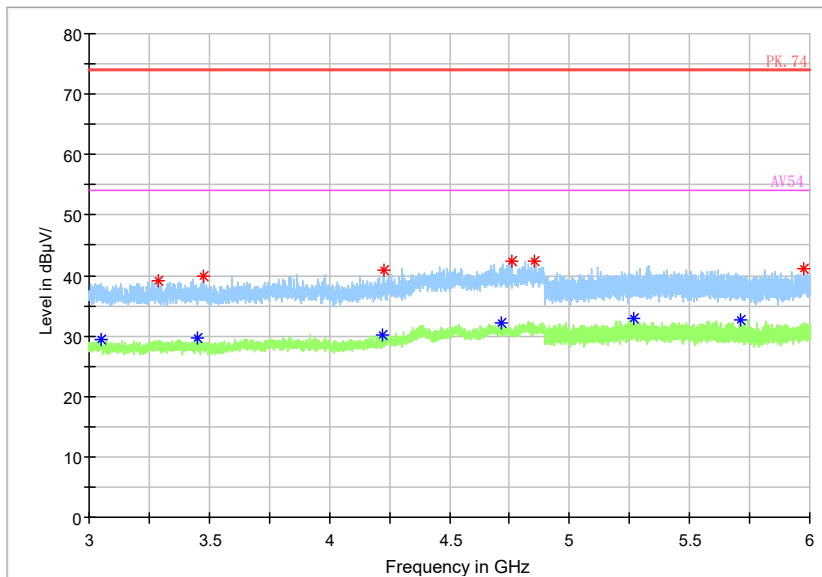
Frequency Range: 30MHz -1GHz
 Detector: QP mode
 Modulation type: 802.11 ax(HE20 MIMO)

Full Spectrum



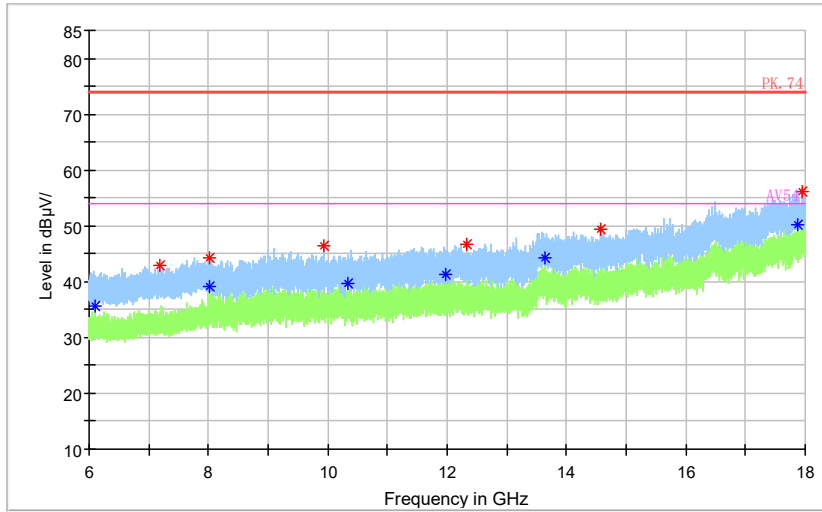
Frequency Range: 1GHz -3GHz
Detector: Av mode and PK mode
Modulation type: 802.11 ax(HE20 MIMO)

Full Spectrum



Frequency Range: 3GHz -6GHz
Detector: Av mode and PK mode
Modulation type: 802.11 ax(HE20 MIMO)

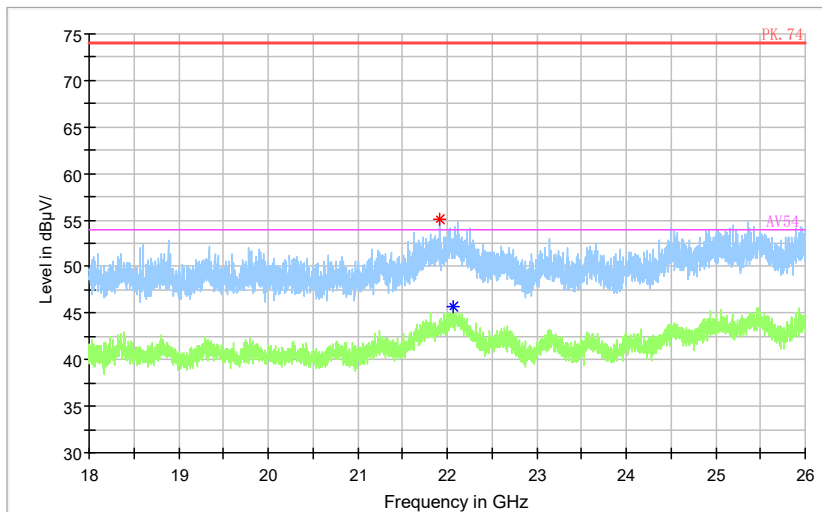
Full Spectrum



— Preview Result 2-AVG — Preview Result 1-PK+ * Critical_Freqs AVG
* Critical_Freqs PK+ — PK.74 — AV54
◆ Final_Result PK+ — Final_Result AVG

Frequency Range: 6GHz -18GHz
 Detector: Av mode and PK mode
 Modulation type: 802.11 ax(HE20 MIMO)

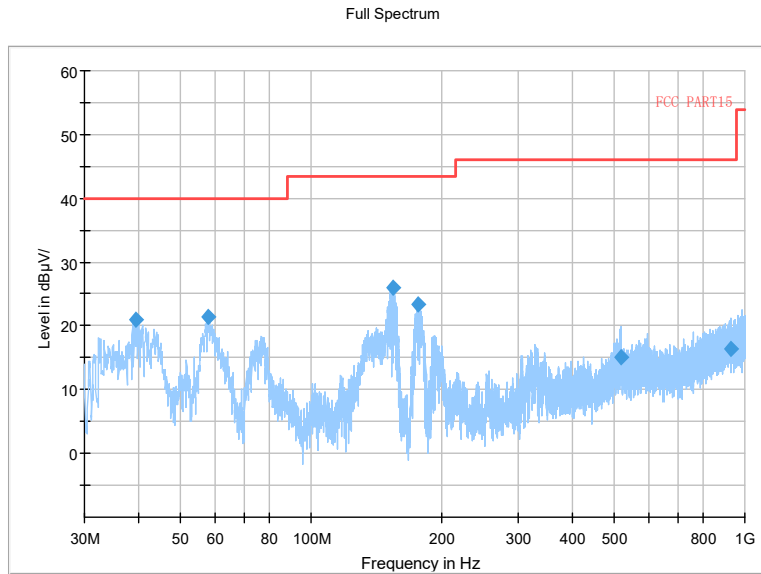
Full Spectrum



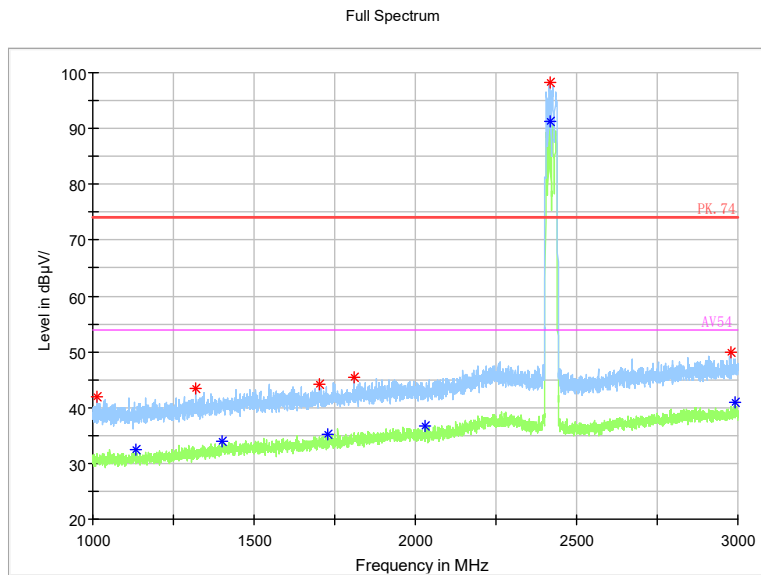
— Preview Result 2-AVG — Preview Result 1-PK+ * Critical_Freqs AVG
* Critical_Freqs PK+ — PK.74 — AV54
◆ Final_Result PK+ — Final_Result AVG

Frequency Range: 18GHz-26GHz
 Detector: Av mode and PK mode
 Modulation type: 802.11ax(HE20 MIMO)

Carrier frequency (MHz): 2422
Channel No.:3

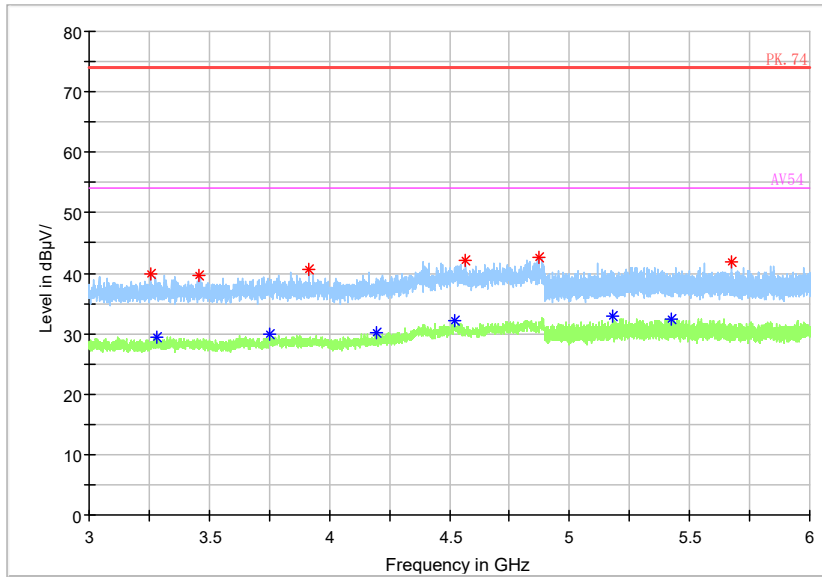


Frequency Range: 30MHz -1GHz
Detector: QP mode
Test Mode: 802.11n(HT40 MIMO)



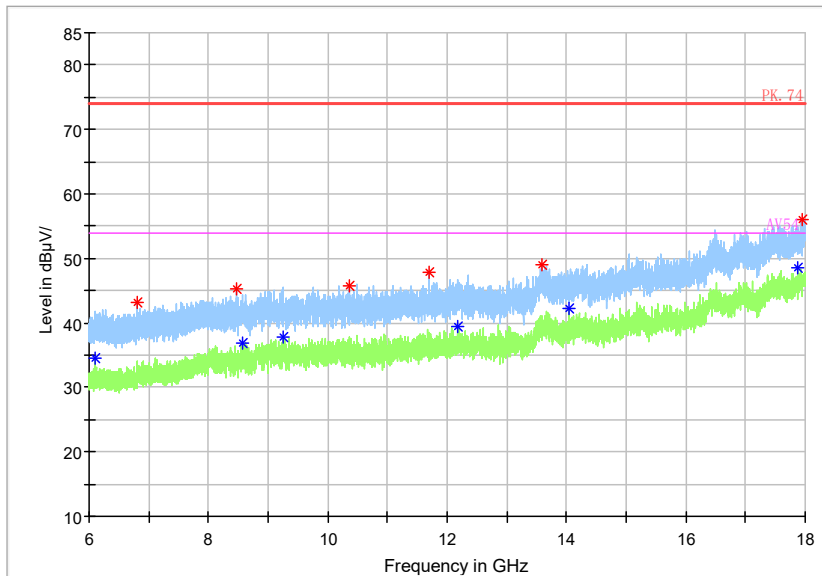
Frequency Range: 1GHz -3GHz
Detector: Av mode and PK mode
Modulation type: 802.11n(HT40 MIMO)

Full Spectrum



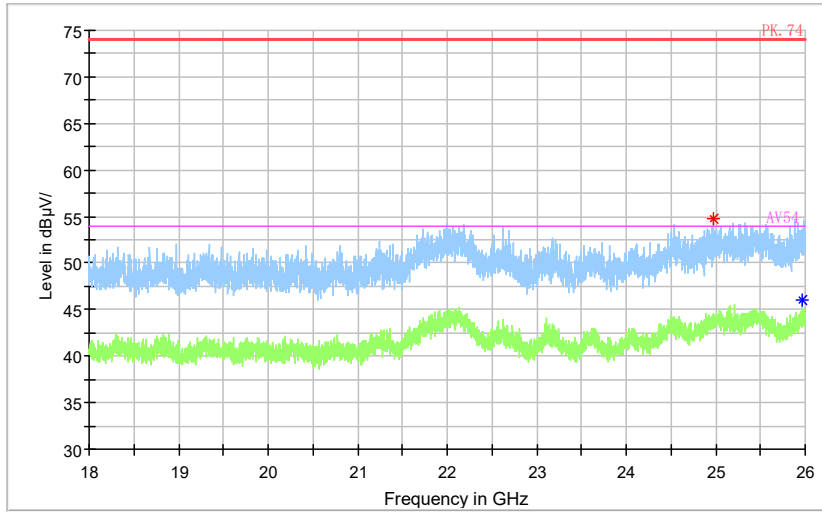
Frequency Range: 3GHz -6GHz
 Detector: Av mode and PK mode
 Modulation type: 802.11n(HT40 MIMO)

Full Spectrum



Frequency Range: 6GHz -18GHz
 Detector: Av mode and PK mode
 Modulation type: 802.11n(HT40 MIMO)

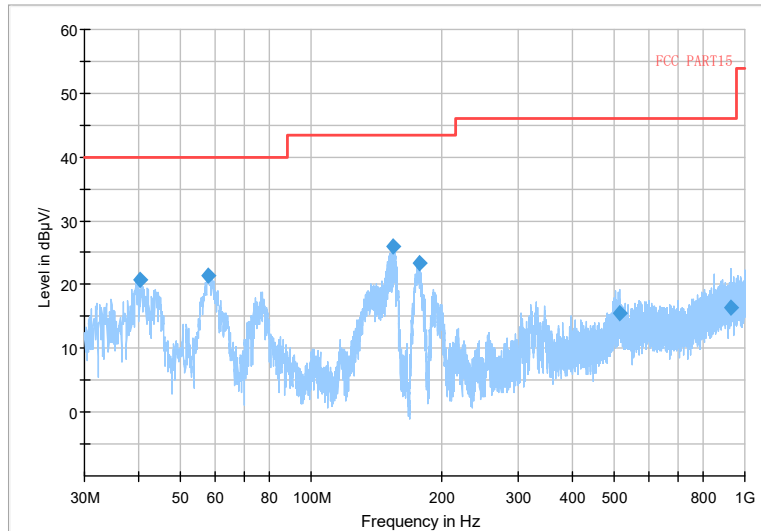
Full Spectrum



- ◆ Preview Result 2-AVG
- ◆ Preview Result 1-PK+
- ◆ Critical_Freqs AVG AV54
- ◆ Critical_Freqs PK+
- ◆ PK.74
- ◆ Final_Result AVG

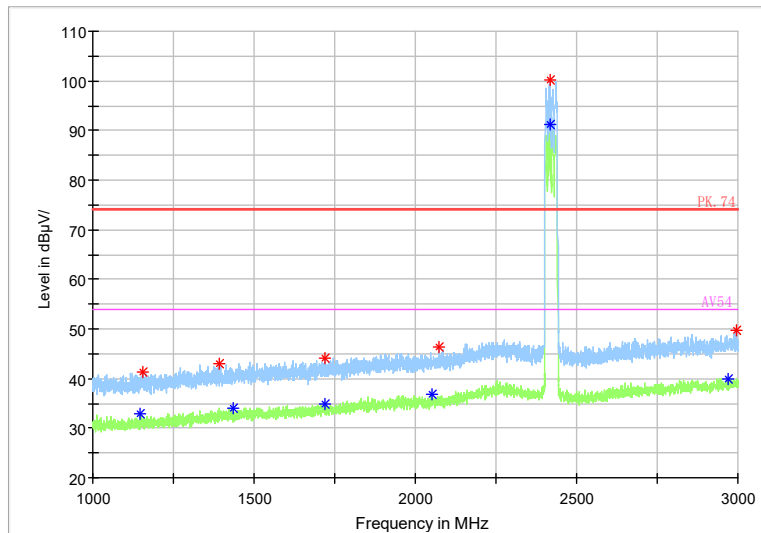
Frequency Range: 18GHz-26GHz
Detector: Av mode and PK mode
Modulation type: 802.11n(HT40 MIMO)

Full Spectrum



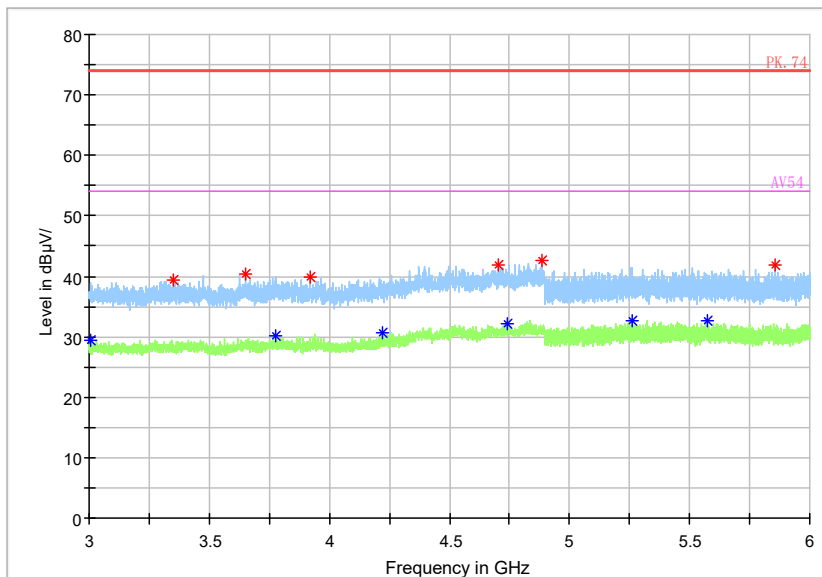
Frequency Range: 30MHz -1GHz
Detector: QP mode
Test Mode: 802.11 ax(HE40 MIMO)

Full Spectrum



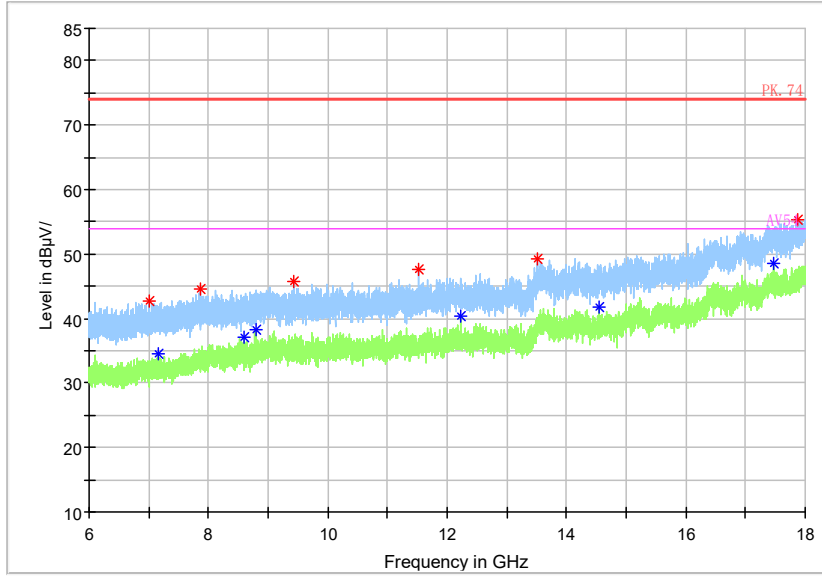
Frequency Range: 1GHz -3GHz
 Detector: Av mode and PK mode
 Modulation type: 802.11 ax(HE40 MIMO)

Full Spectrum



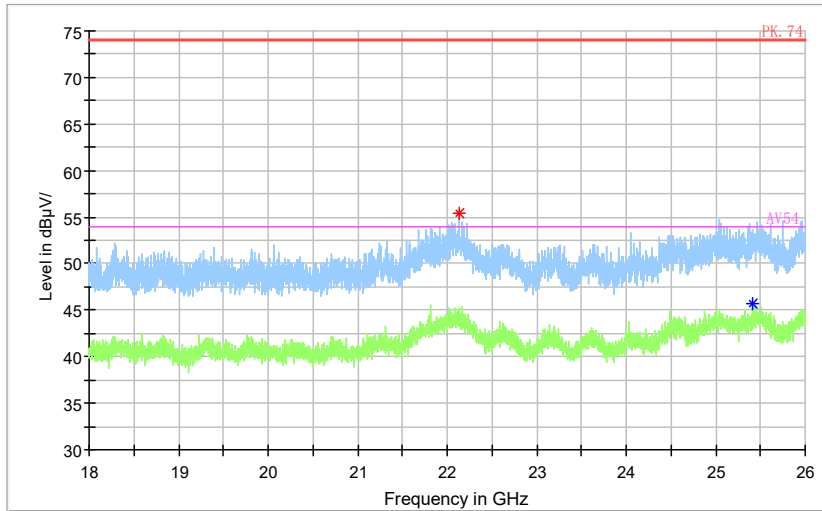
Frequency Range: 3GHz -6GHz
 Detector: Av mode and PK mode
 Modulation type: 802.11 ax(HE40 MIMO)

Full Spectrum



Frequency Range: 6GHz -18GHz
Detector: Av mode and PK mode
Modulation type: 802.11 ax(HE40 MIMO)

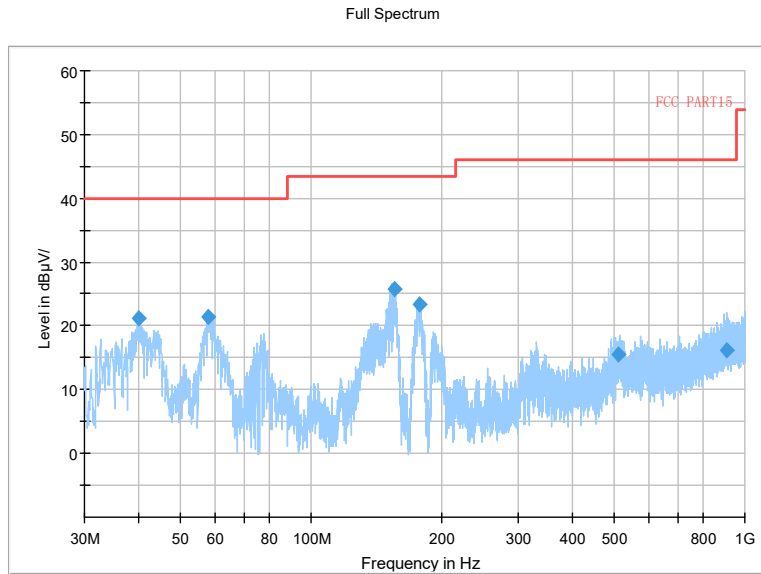
Full Spectrum



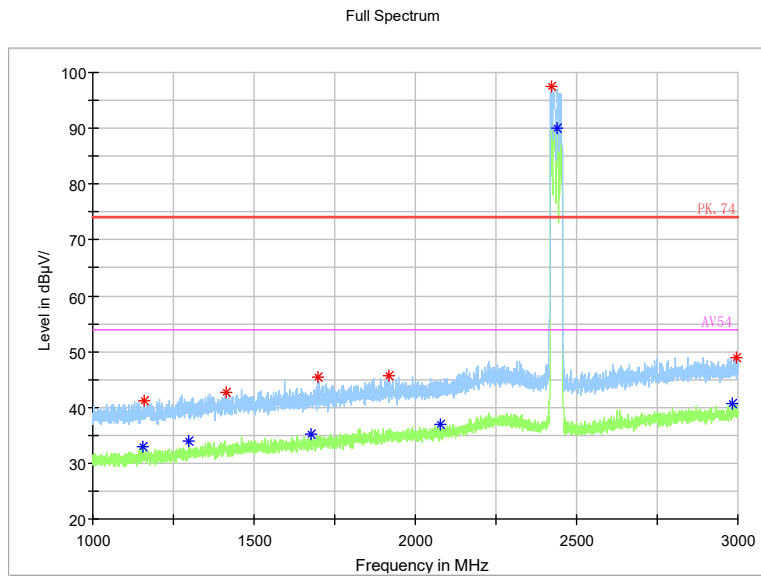
- Preview Result 2-AVG
- Preview Result 1-PK+
- * Critical_Freqs AVG
- * Critical_Freqs PK+
- PK.74
- * Final_Result AVG
- AV54
- * Final_Result PK+

Frequency Range: 18GHz-26GHz
Detector: Av mode and PK mode
Modulation type: 802.11ax(HE40 MIMO)

Carrier frequency (MHz): 2437
Channel No.:6

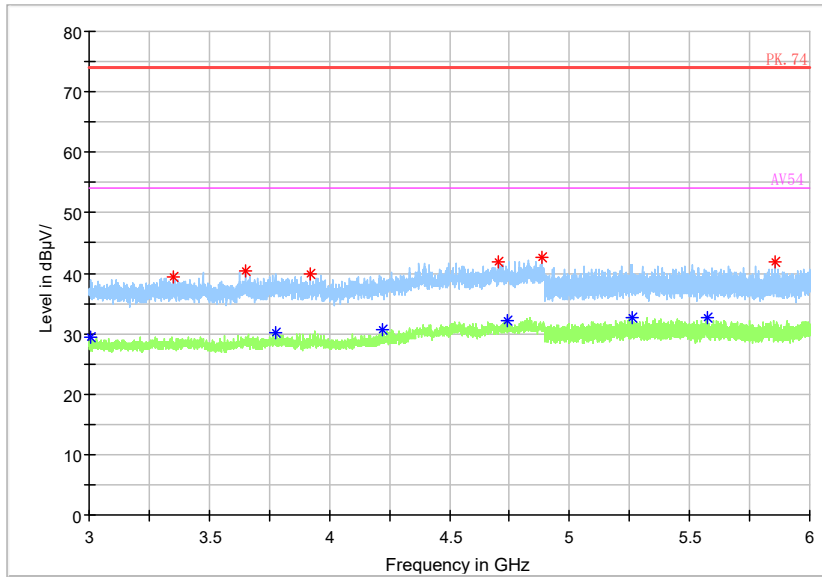


Frequency Range: 30MHz -1GHz
Detector: QP mode
Test Mode: 802.11n(HT40 MIMO)



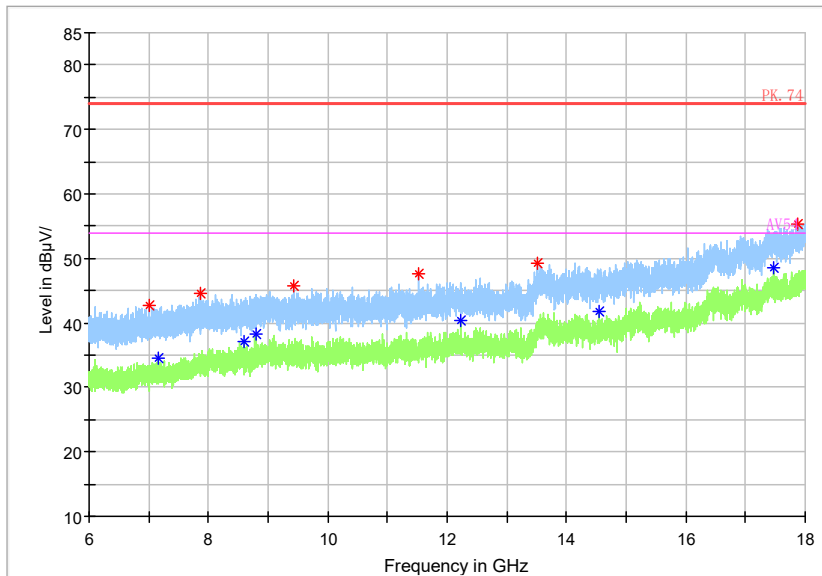
Frequency Range: 1GHz -3GHz
Detector: Av mode and PK mode
Modulation type: 802.11n(HT40 MIMO)

Full Spectrum



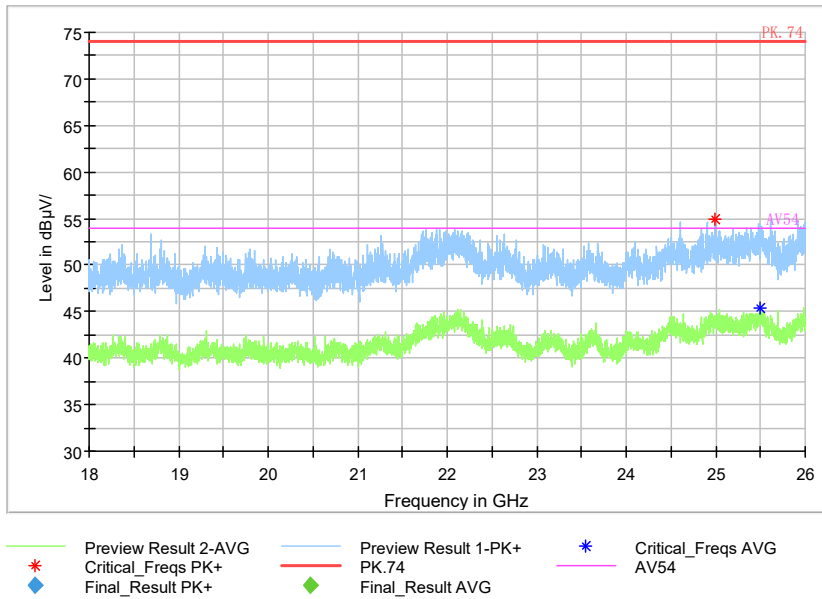
Frequency Range: 3GHz -6GHz
 Detector: Av mode and PK mode
 Modulation type: 802.11n(HT40 MIMO)

Full Spectrum



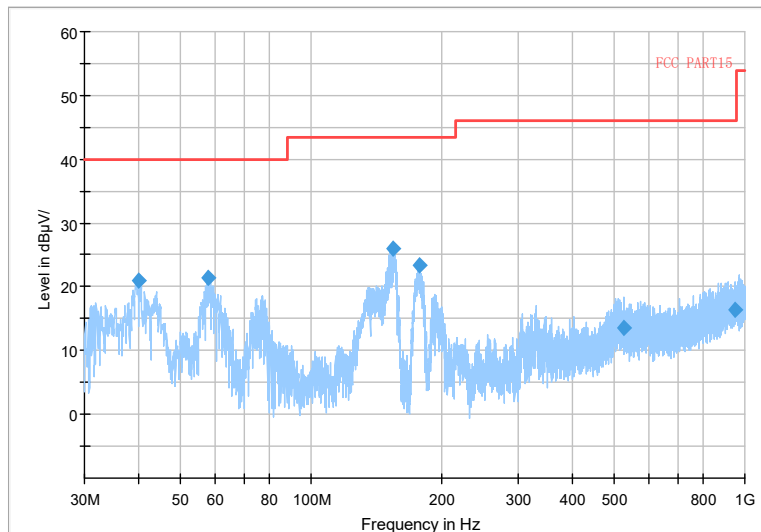
Frequency Range: 6GHz -18GHz
 Detector: Av mode and PK mode
 Modulation type: 802.11n(HT40 MIMO)

Full Spectrum



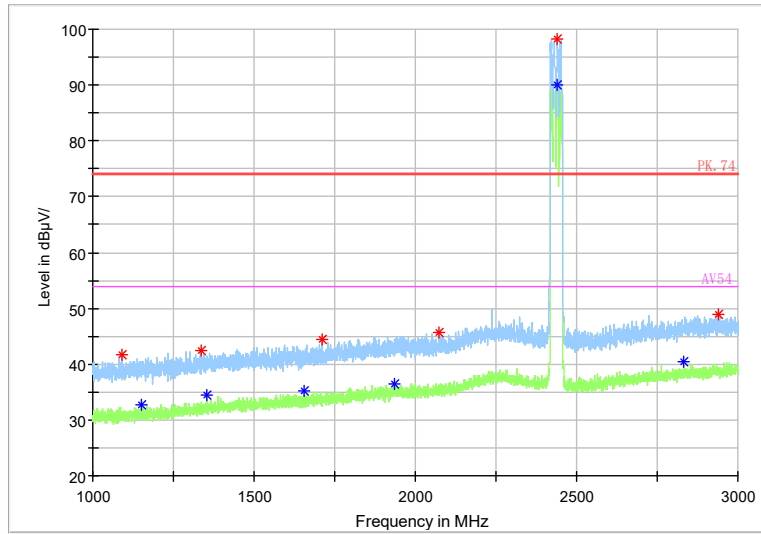
Frequency Range: 18GHz-26GHz
 Detector: Av mode and PK mode
 Modulation type: 802.11n(HT40 MIMO)

Full Spectrum



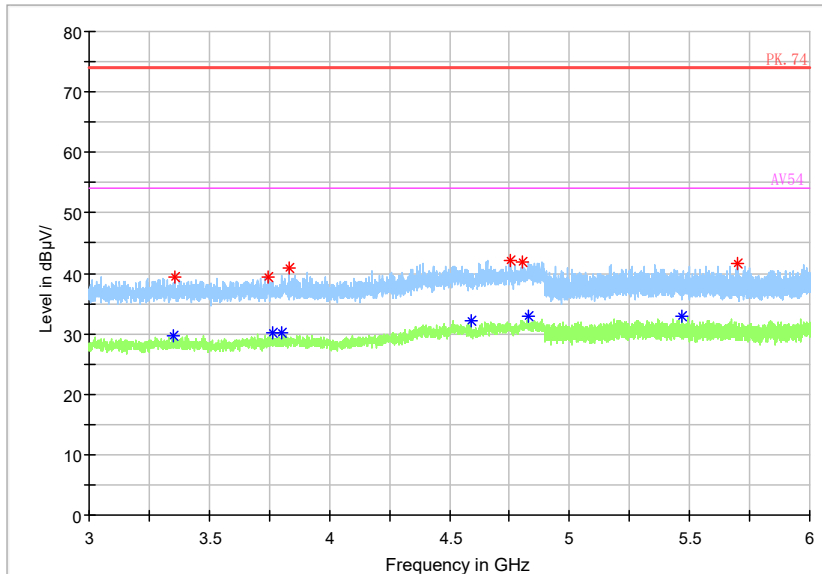
Frequency Range: 30MHz -1GHz
 Detector: QP mode
 Modulation type: 802.11 ax(HE40 MIMO)

Full Spectrum



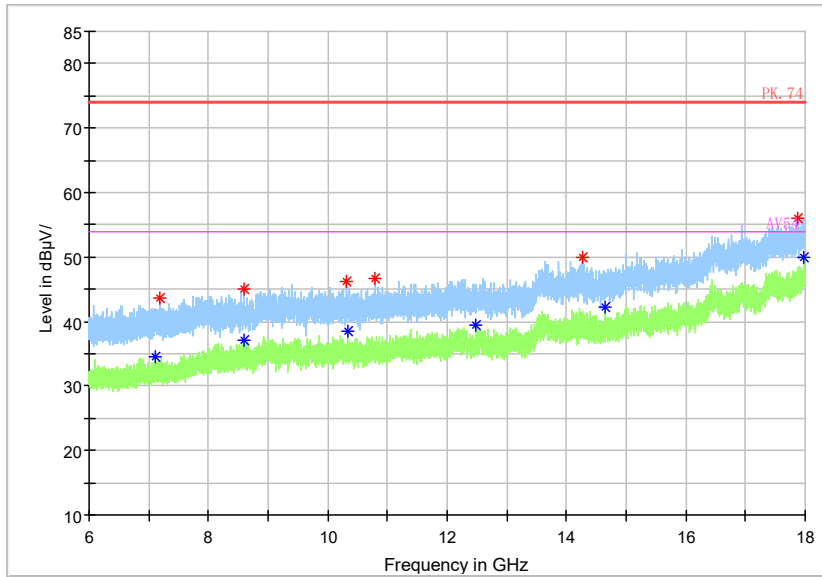
Frequency Range: 1GHz -3GHz
Detector: Av mode and PK mode
Modulation type: 802.11 ax(HE40 MIMO)

Full Spectrum



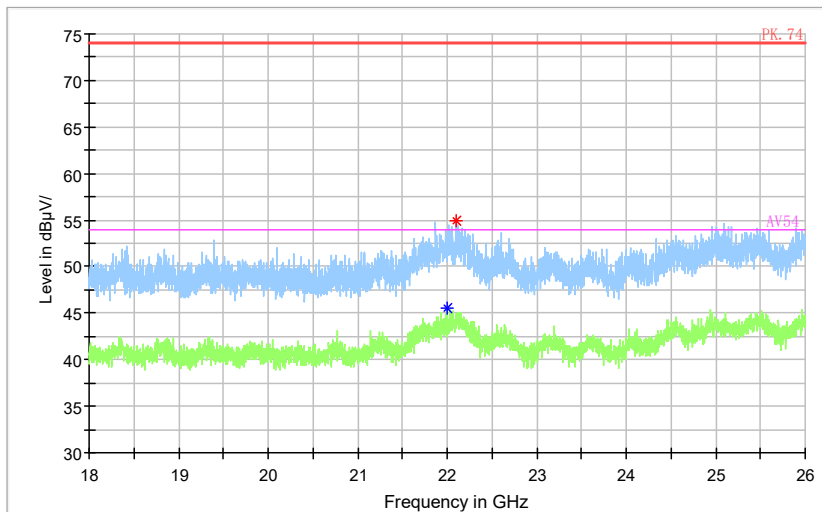
Frequency Range: 3GHz -6GHz
Detector: Av mode and PK mode
Modulation type: 802.11 ax(HE40 MIMO)

Full Spectrum



Frequency Range: 6GHz -18GHz
Detector: Av mode and PK mode
Modulation type: 802.11 ax(HE40 MIMO)

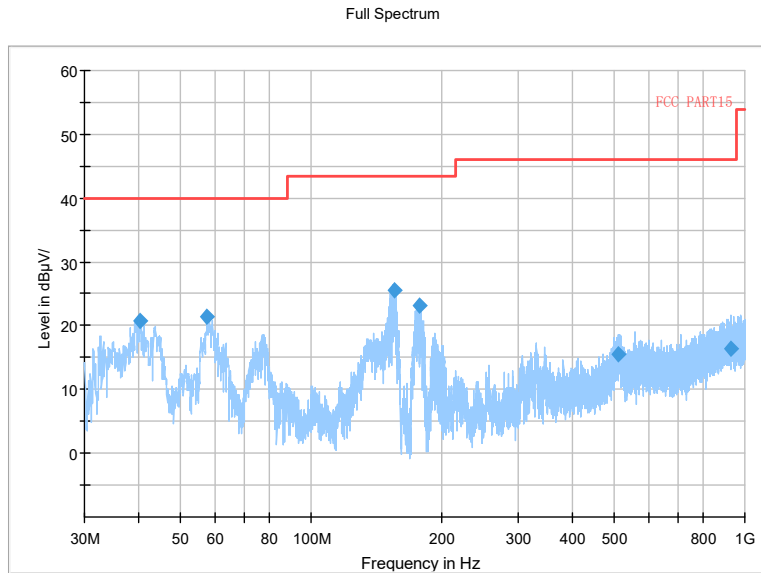
Full Spectrum



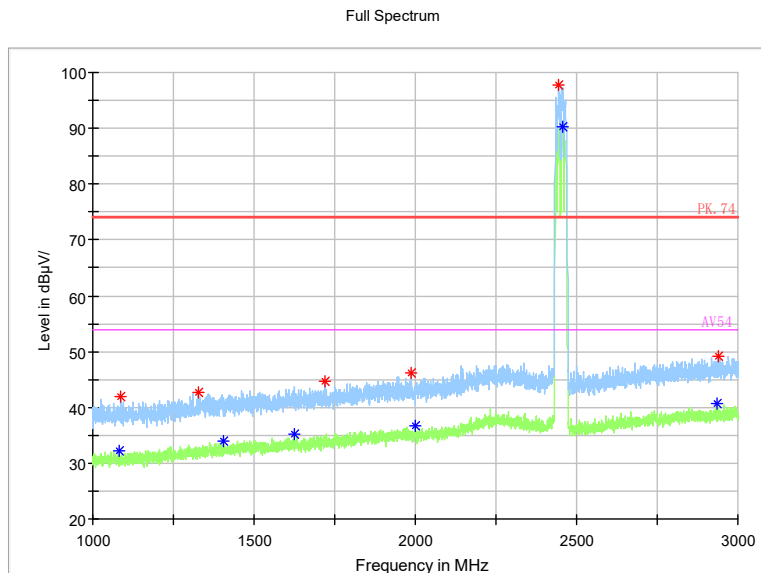
◆ Preview Result 2-AVG ◆ Preview Result 1-PK+ * Critical_Freqs AVG
* Critical_Freqs PK+ ◆ Final_Result PK+ ◆ Final_Result AVG
◆ Final_Result AVG

Frequency Range: 18GHz-26GHz
Detector: Av mode and PK mode
Modulation type: 802.11ax(HE40 MIMO)

Carrier frequency (MHz): 2452
 Channel No.:9

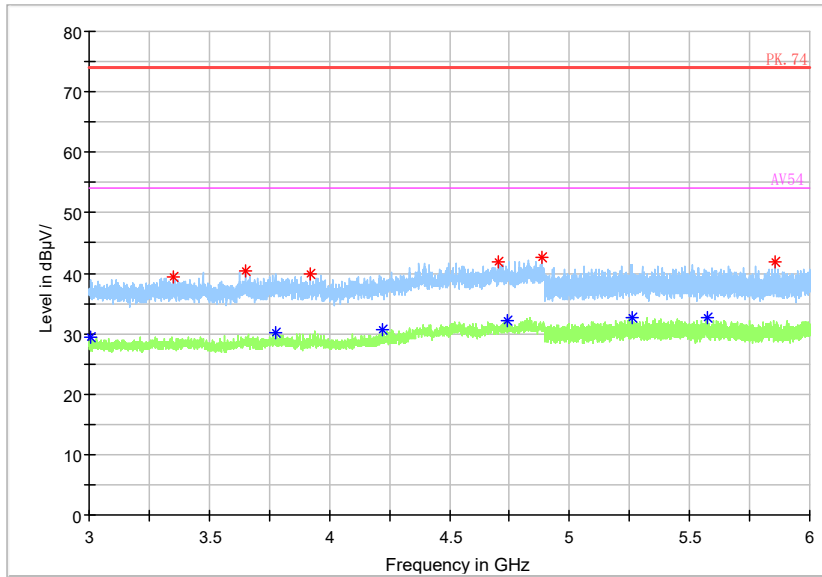


Frequency Range: 30MHz -1GHz
 Detector: QP mode
 Test Mode: 802.11n(HT40)



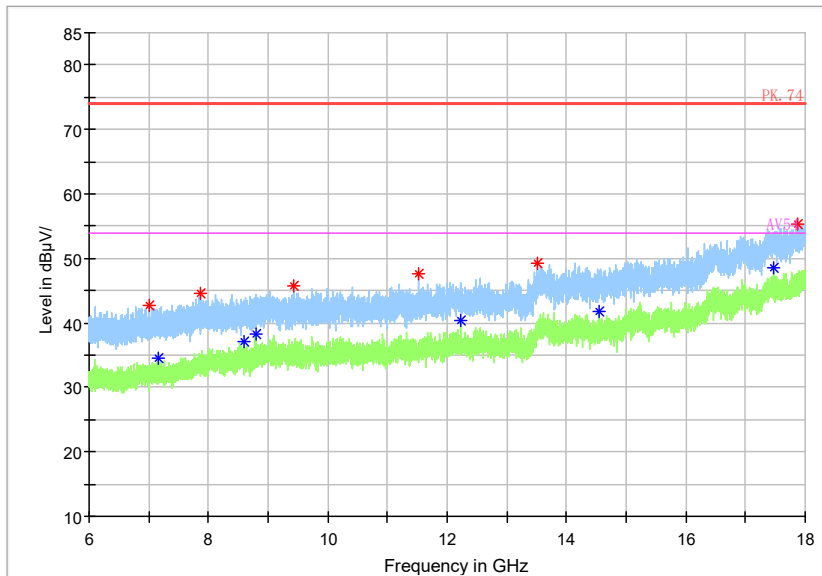
Frequency Range: 1GHz -3GHz
 Detector: Av mode and PK mode
 Modulation type: 802.11n(HT40 MIMO)

Full Spectrum



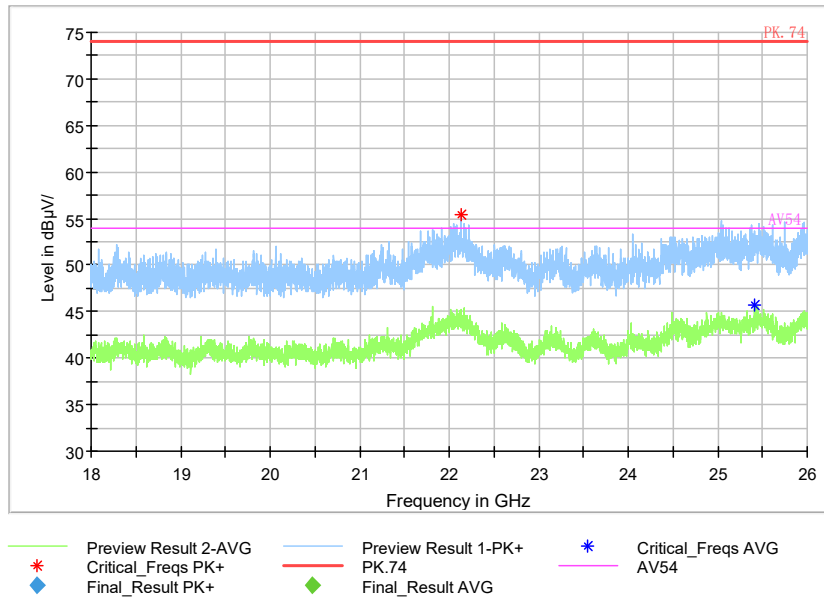
Frequency Range: 3GHz -6GHz
Detector: Av mode and PK mode
Modulation type: 802.11n(HT40 MIMO)

Full Spectrum



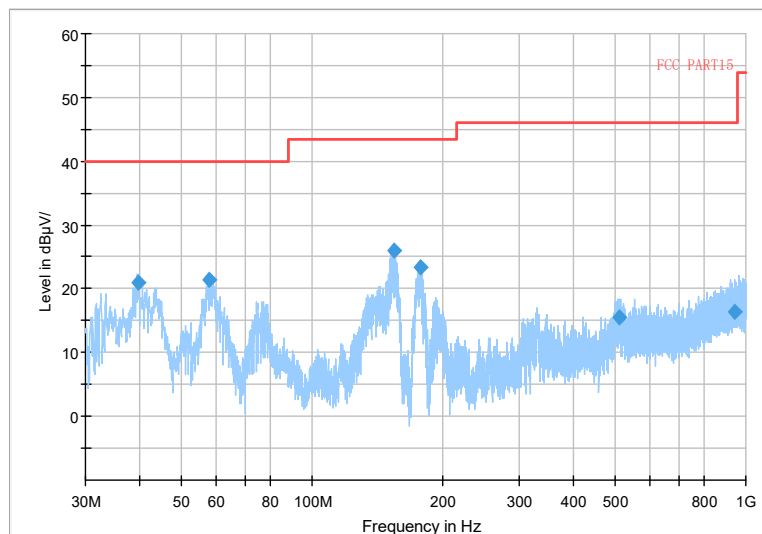
Frequency Range: 6GHz -18GHz
Detector: Av mode and PK mode
Modulation type: 802.11n(HT40 MIMO)

Full Spectrum



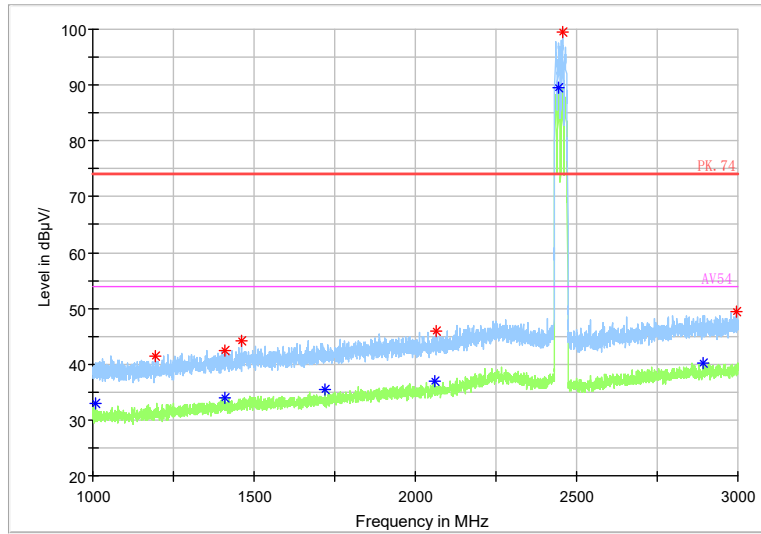
Frequency Range: 18GHz-26GHz
Detector: Av mode and PK mode
Modulation type: 802.11n(HT40 MIMO)

Full Spectrum



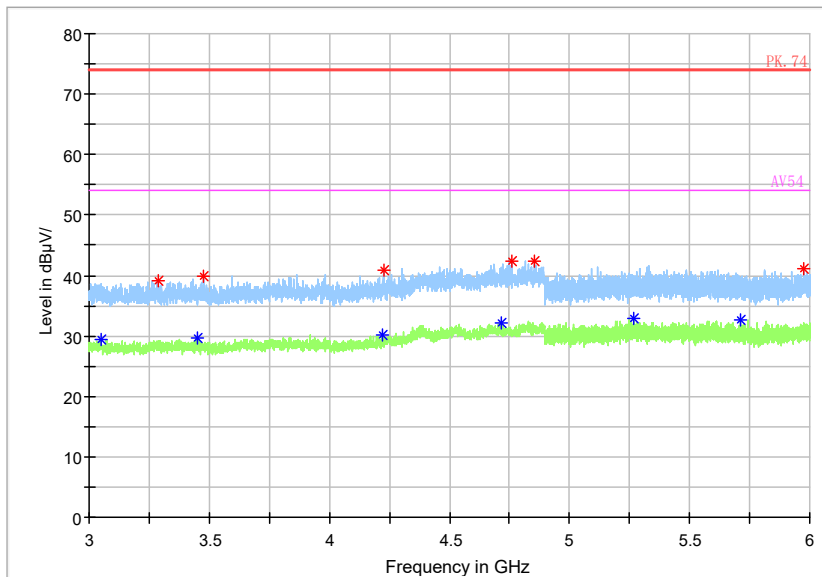
Frequency Range: 30MHz -1GHz
Detector: QP mode
Modulation type: 802.11 ax(HE40 MIMO)

Full Spectrum



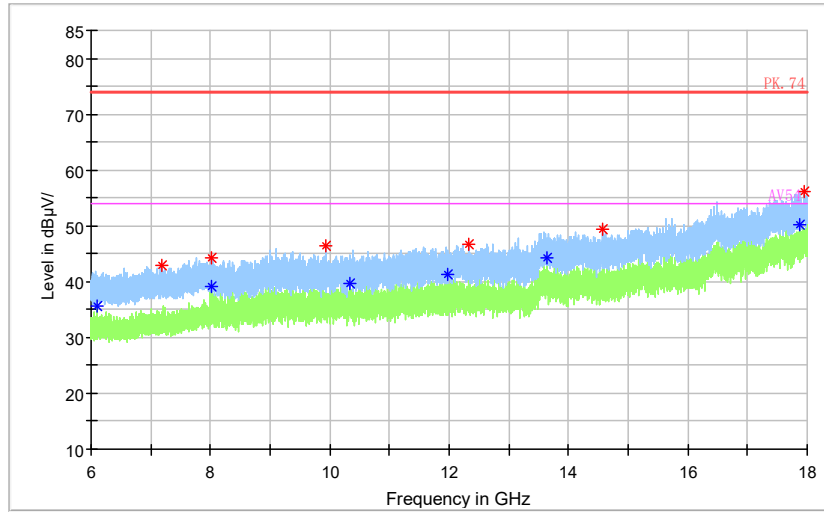
Frequency Range: 1GHz -3GHz
 Detector: Av mode and PK mode
 Modulation type: 802.11 ax(HE40 MIMO)

Full Spectrum



Frequency Range: 3GHz -6GHz
 Detector: Av mode and PK mode
 Modulation type: 802.11 ax(HE40 MIMO)

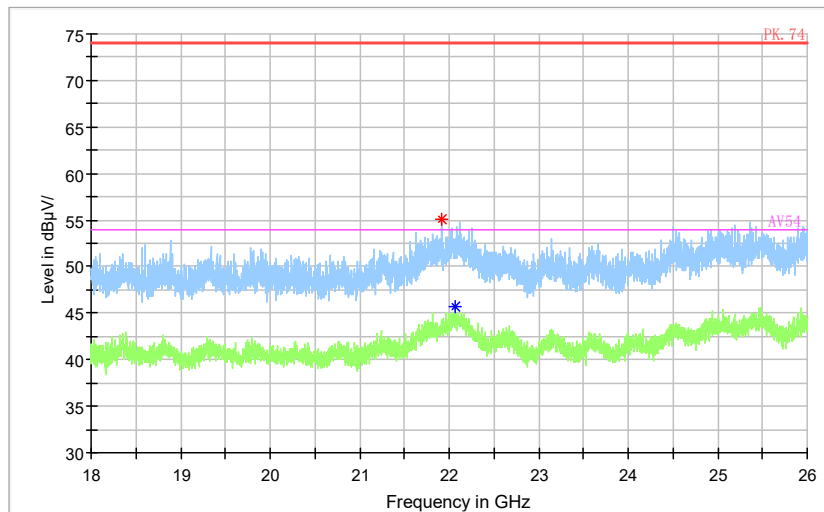
Full Spectrum



—◆ Preview Result 2-AVG — Preview Result 1-PK+ *— Critical_Freqs AVG AV54
*— Critical_Freqs PK+ — PK.74 —◆ Final_Result AVG
—◆ Final_Result PK+

Frequency Range: 6GHz -18GHz
 Detector: Av mode and PK mode
 Modulation type: 802.11 ax(HE40 MIMO)

Full Spectrum



—◆ Preview Result 2-AVG — Preview Result 1-PK+ *— Critical_Freqs AVG AV54
*— Critical_Freqs PK+ — PK.74 —◆ Final_Result AVG
—◆ Final_Result PK+

Frequency Range: 18GHz-26GHz
 Detector: Av mode and PK mode
 Modulation type: 802.11ax(HE40 MIMO)

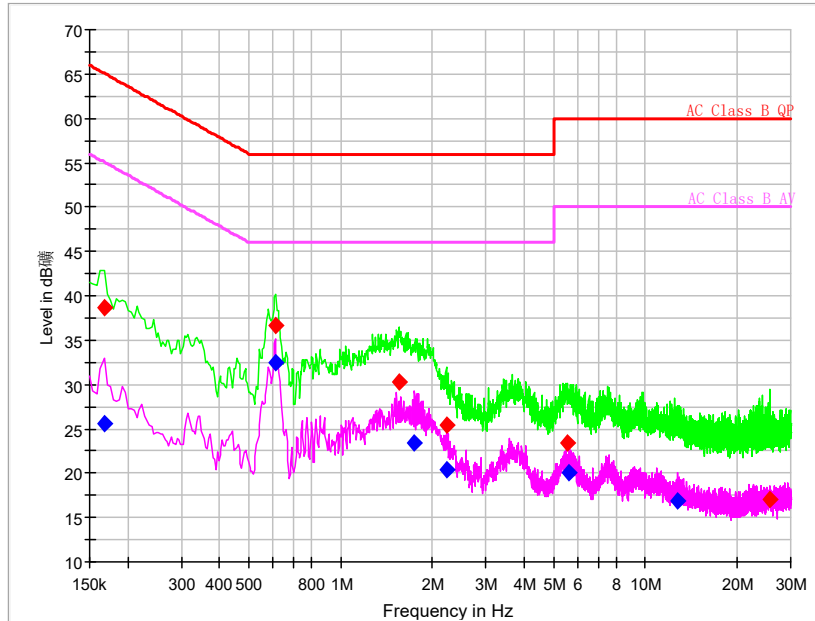
AC Power line Conducted Emission

A "reference path loss" Corr.(dB) is established and the $L_{cable+ATT+VDF}$ is the attenuation of "reference path loss", and including the cable loss, the attenuation of the attenuator, the voltage division factor of AMN.

The measurement results are obtained as described below:

$$P_{result} = P_{mea} + Corr.(dB)$$

Sample calculation: $(25.62 \text{ dB}\mu\text{V}) = (-4.08 \text{ dB}\mu\text{V}) + (29.7 \text{ dB})$, the corresponding frequency is 0.167057MHz.



L+N Line

MEASUREMENT RESULT:

Frequency (MHz)	QuasiPeak (dBμV)	Average (dBμV)	Limit (dBμV)	Margin (dB)	Line	Corr. (dB)	Pmea QuasiPeak (dBμV)	Pmea Average (dBμV)
0.167057	---	25.62	55.11	29.49	L1	29.7	---	-4.08
0.167057	38.68	---	65.11	26.43	L1	29.7	8.98	---
0.610543	---	32.50	46.00	13.50	N	29.7	---	2.80
0.614807	36.60	---	56.00	19.40	L1	29.7	6.9	---
1.548686	30.35	---	56.00	25.65	L1	29.8	0.55	---
1.749107	---	23.48	46.00	22.52	N	29.8	---	-6.32
2.222443	25.47	---	56.00	30.53	L1	29.8	-4.33	---
2.222443	---	20.42	46.00	25.58	L1	29.8	---	-9.38
5.544321	23.43	---	60.00	36.57	L1	29.8	-6.37	---
5.625343	---	19.99	50.00	30.01	L1	29.8	---	-9.81
12.806400	---	16.79	50.00	33.21	L1	30.0	---	-13.21
25.710129	17.04	---	60.00	42.96	L1	30.5	-13.46	---

---End of the test report---