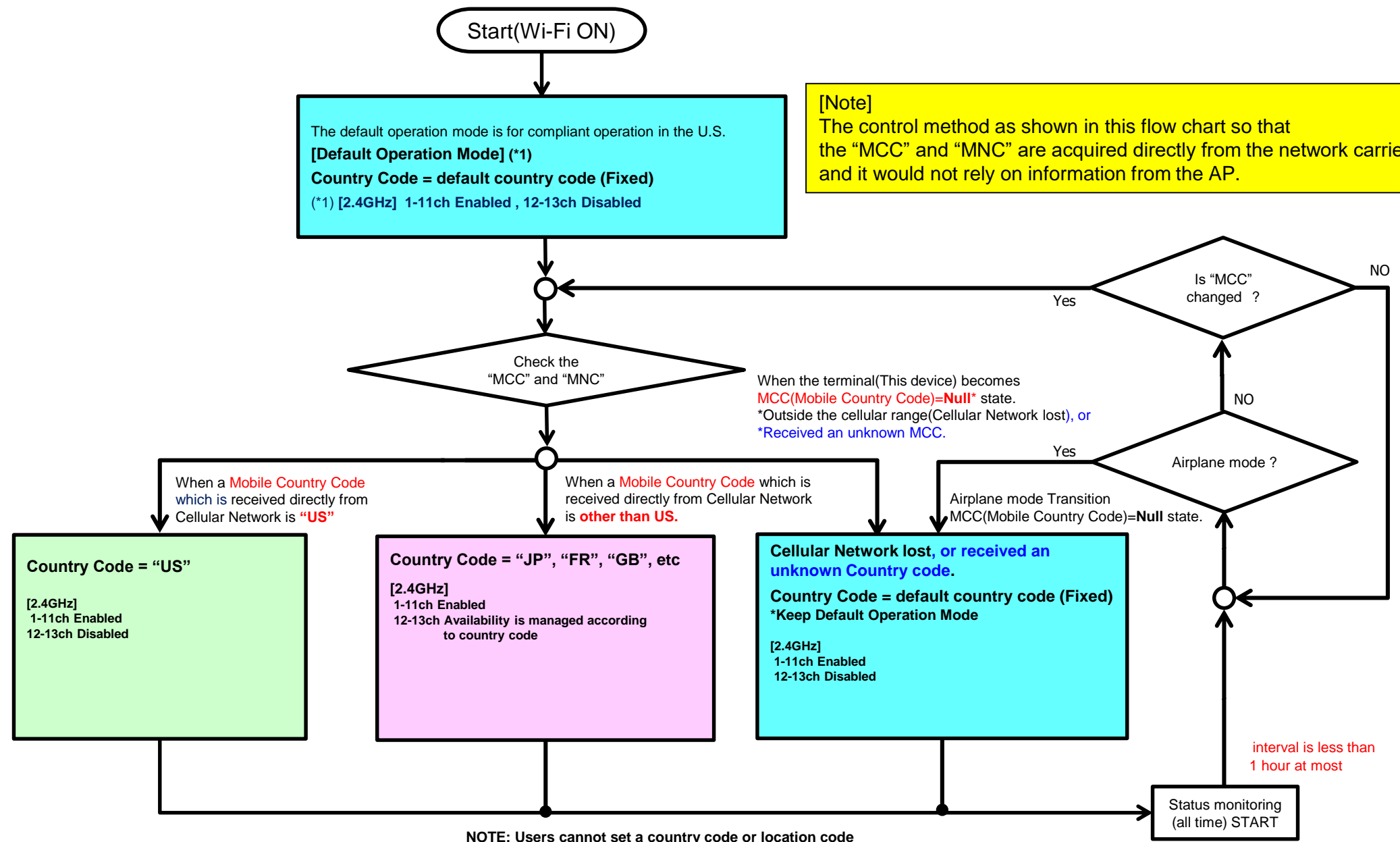


**Verification report of control algorithm**  
**is accordance with KDB594280**

FCC ID : APYHRO00294

Date : 2021 March-31th

# ◆ Channel Control Algorithm Flowchart



[Note]  
The control method as shown in this flow chart so that the "MCC" and "MNC" are acquired directly from the network carrier and it would not rely on information from the AP.

When the terminal(This device) becomes MCC(Mobile Country Code)=Null\* state.  
\*Outside the cellular range(Cellular Network lost), or  
\*Received an unknown MCC.

When a Mobile Country Code which is received directly from Cellular Network is "US"

When a Mobile Country Code which is received directly from Cellular Network is other than US.

Airplane mode Transition  
MCC(Mobile Country Code)=Null state.

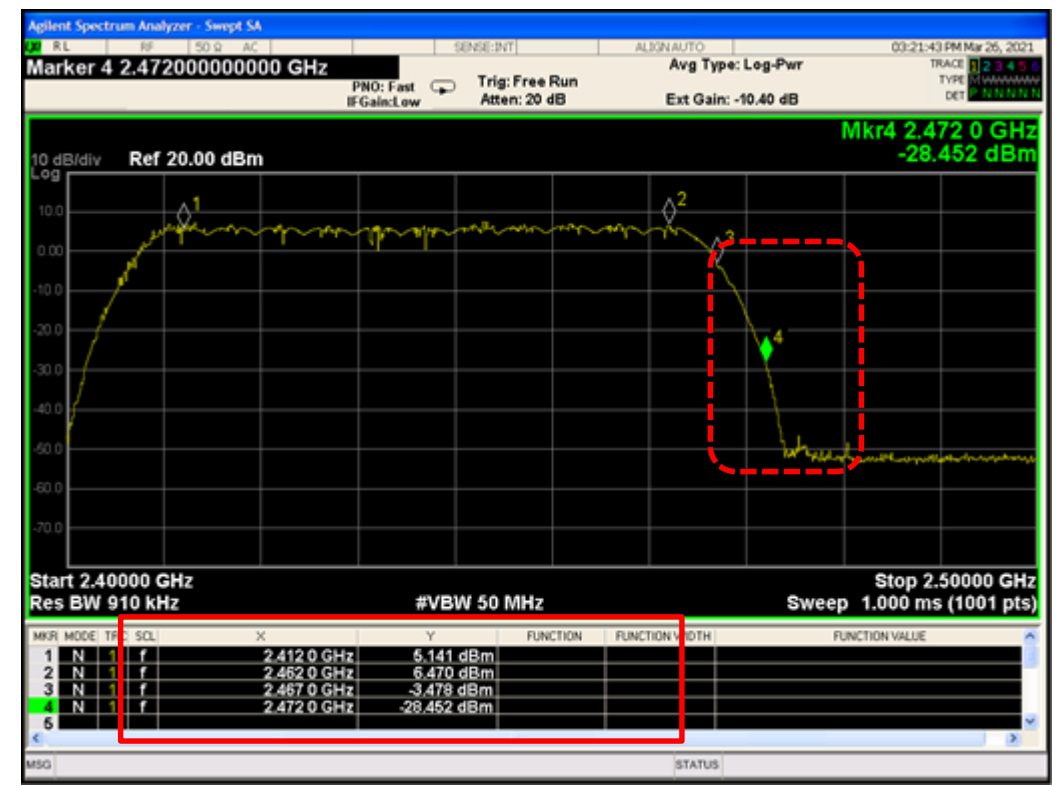
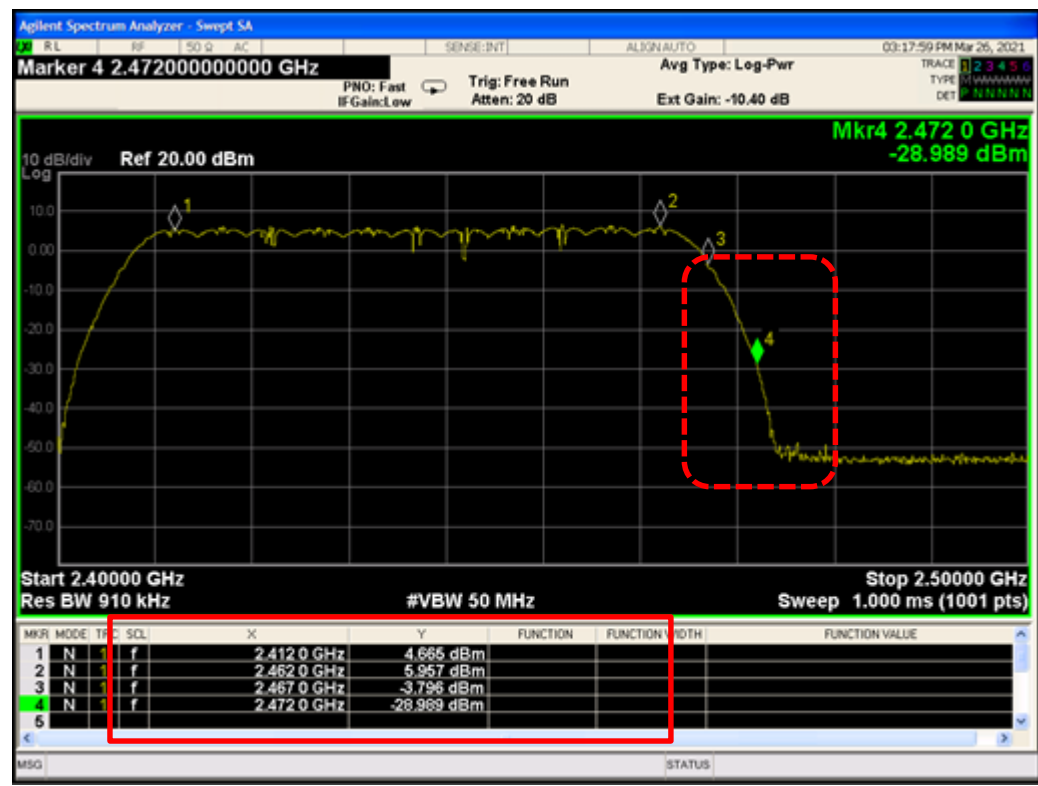
NOTE: Users cannot set a country code or location code

interval is less than 1 hour at most

# ◆ Scan Waveform on 2.4GHz(Country Code=default country code, US)

[CC=default country code]

[CC="US"]



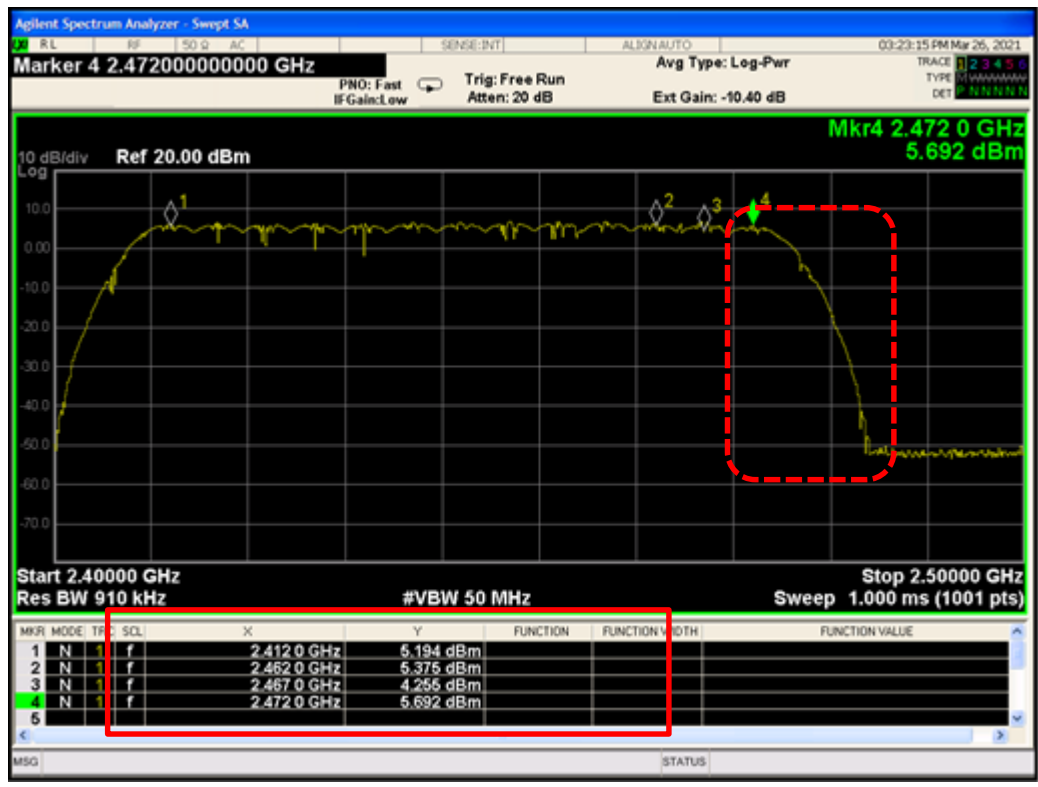
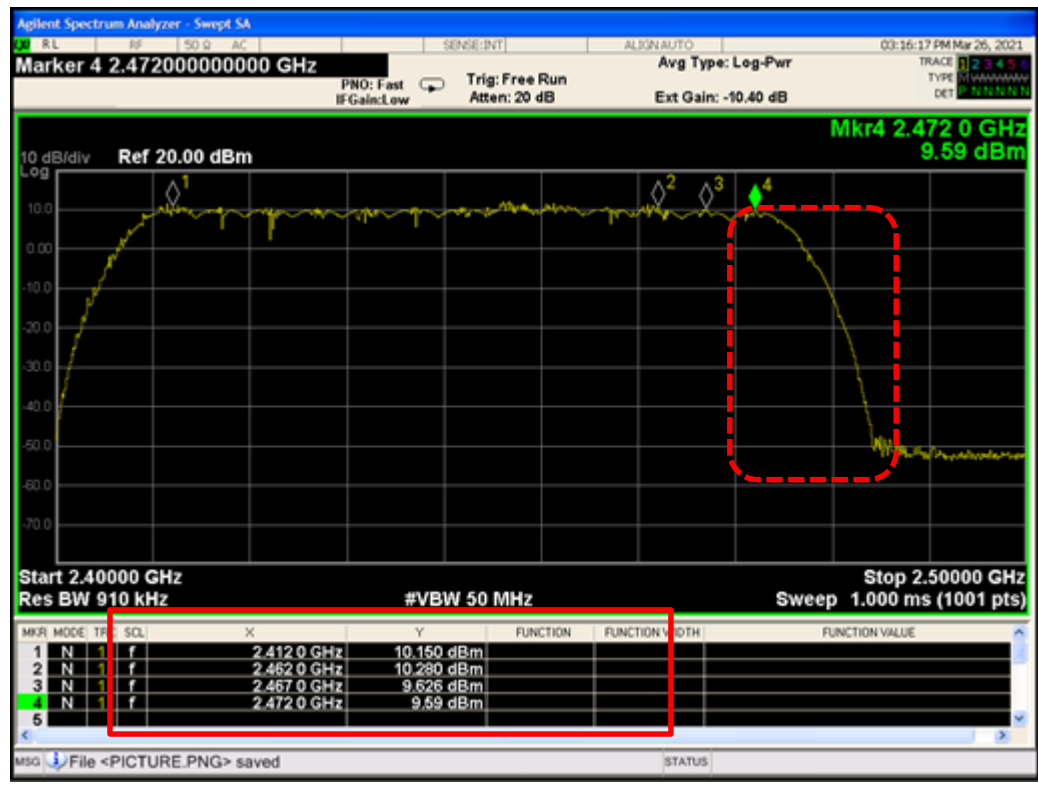
1-11ch = Enabled  
 12-13ch = Disabled  
 ⇒ Operation Check Result = OK

1-11ch = Enabled  
 12-13ch = Disabled  
 ⇒ Operation Check Result = OK

# ◆ Scan Waveform on 2.4GHz(Country Code=JP, FR)

[CC="JP"]

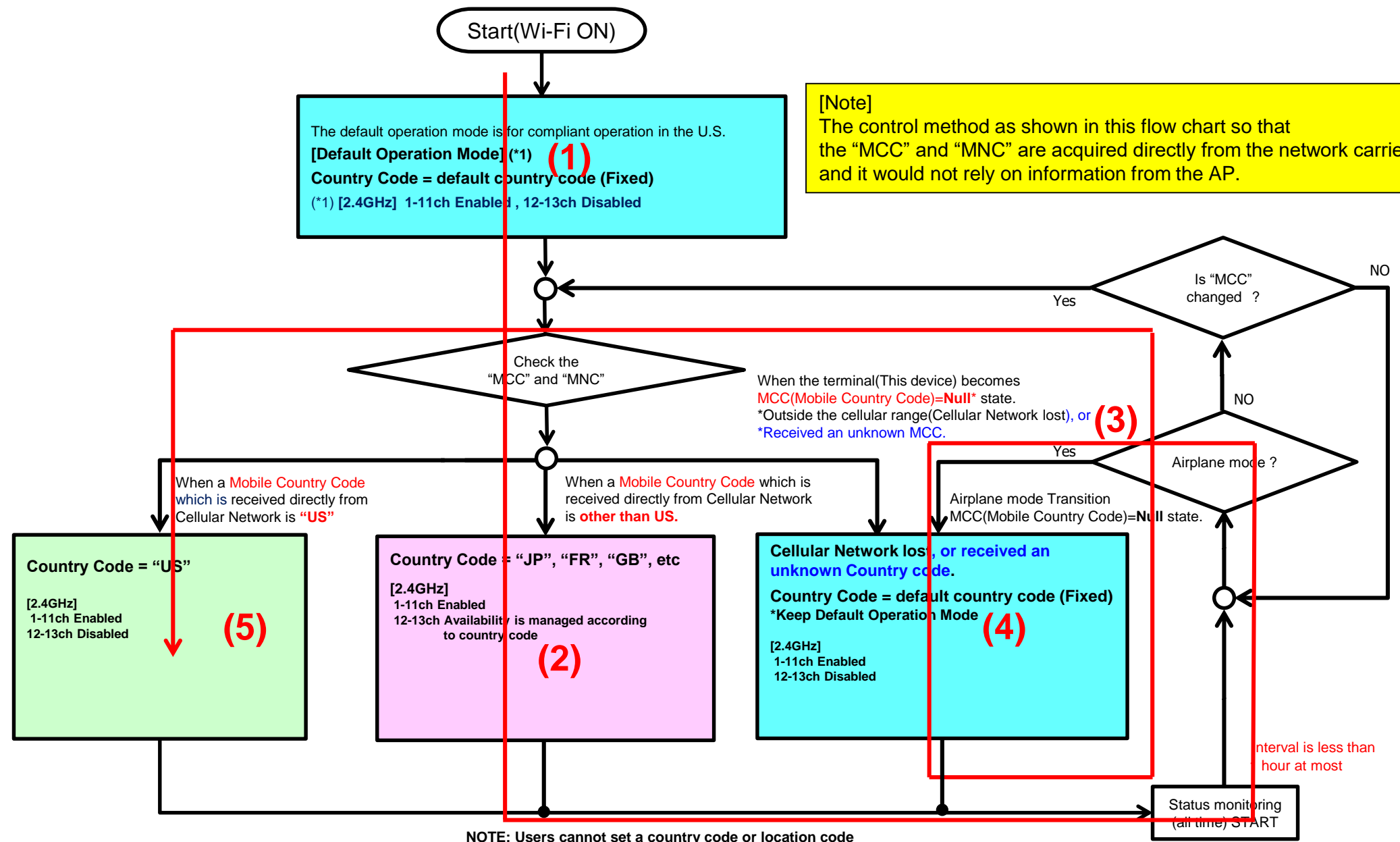
[CC="FR"]



1-13ch = Enabled  
 ⇒ Operation Check Result = OK

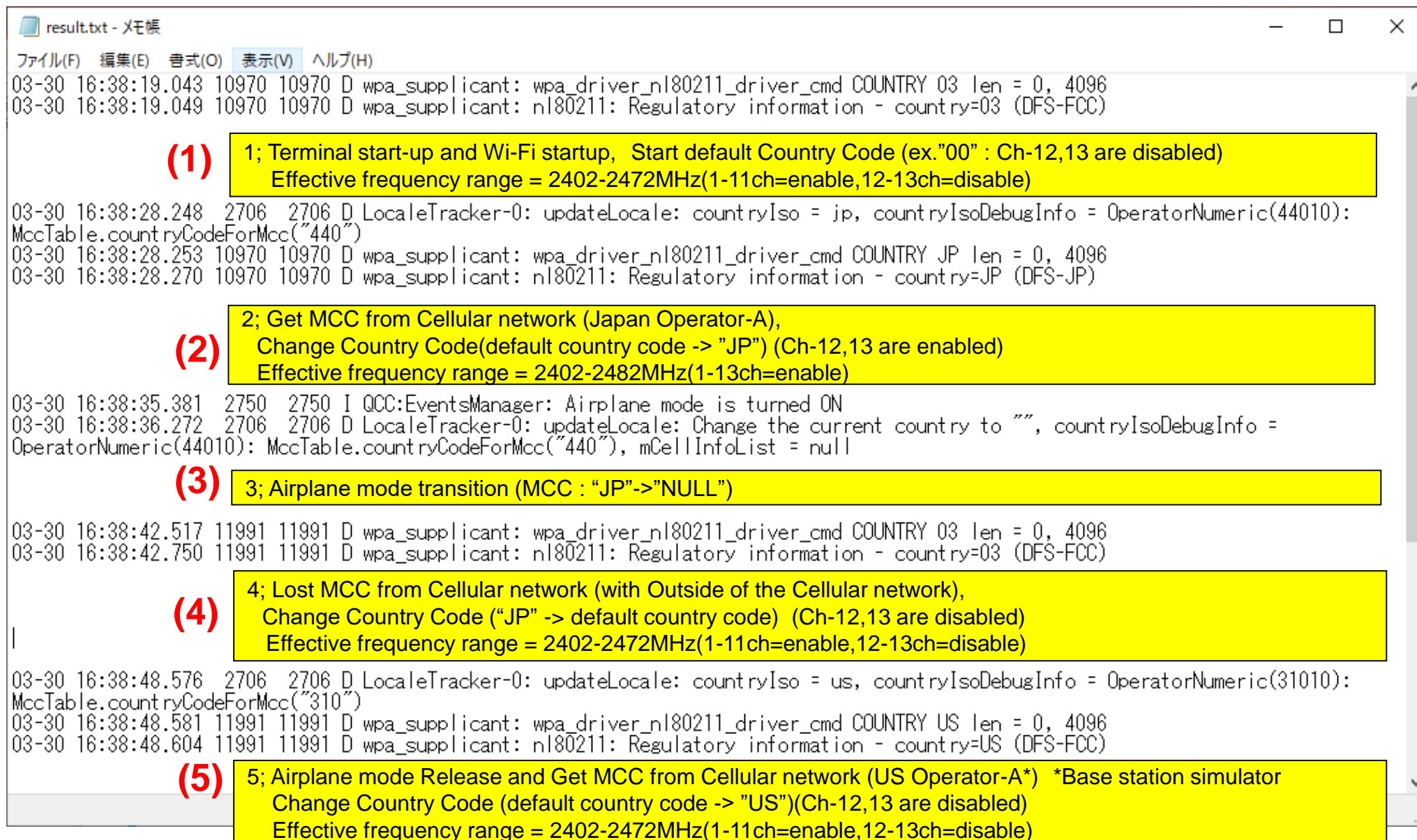
1-13ch = Enabled  
 ⇒ Operation Check Result = OK

# ◆ Channel Control Algorithm Flowchart



# ◆ Verification Pattern (Operation check result)

## Check Result = OK



The screenshot shows a terminal window titled "result.txt - メモ帳" with a menu bar (File, Edit, Format, View, Help). The log output contains five steps, each highlighted in a yellow box:

- (1)** 1; Terminal start-up and Wi-Fi startup, Start default Country Code (ex."00" : Ch-12,13 are disabled)  
Effective frequency range = 2402-2472MHz(1-11ch=enable,12-13ch=disable)
- (2)** 2; Get MCC from Cellular network (Japan Operator-A),  
Change Country Code(default country code -> "JP") (Ch-12,13 are enabled)  
Effective frequency range = 2402-2482MHz(1-13ch=enable)
- (3)** 3; Airplane mode transition (MCC : "JP"->"NULL")
- (4)** 4; Lost MCC from Cellular network (with Outside of the Cellular network),  
Change Country Code ("JP" -> default country code) (Ch-12,13 are disabled)  
Effective frequency range = 2402-2472MHz(1-11ch=enable,12-13ch=disable)
- (5)** 5; Airplane mode Release and Get MCC from Cellular network (US Operator-A\*) \*Base station simulator  
Change Country Code (default country code -> "US")(Ch-12,13 are disabled)  
Effective frequency range = 2402-2472MHz(1-11ch=enable,12-13ch=disable)