

## #01\_GSM850\_GPRS (4 Tx slots)\_Left Cheek\_Ch128

Communication System: GSM850 ; Frequency: 824.2 MHz; Duty Cycle: 1:2.08

Medium: HSL\_850\_170512 Medium parameters used:  $f = 824.2$  MHz;  $\sigma = 0.857$  S/m;  $\epsilon_r = 40.719$ ;  $\rho = 1000$  kg/m<sup>3</sup>

Ambient Temperature : 23.5 °C ; Liquid Temperature : 22.5 °C

DASY5 Configuration:

- Probe: EX3DV4 - SN3955; ConvF(10.33, 10.33, 10.33); Calibrated: 2016/11/24;
- Sensor-Surface: 1.4mm (Mechanical Surface Detection)
- Electronics: DAE4 Sn1399; Calibrated: 2016/11/17
- Phantom: SAM-Left; Type: QD 000 P40 C; Serial: TP-1446
- Measurement SW: DASY52, Version 52.8 (8); SEMCAD X Version 14.6.10 (7331)

**Area Scan (71x121x1):** Interpolated grid: dx=1.500 mm, dy=1.500 mm

Maximum value of SAR (interpolated) = 0.116 W/kg

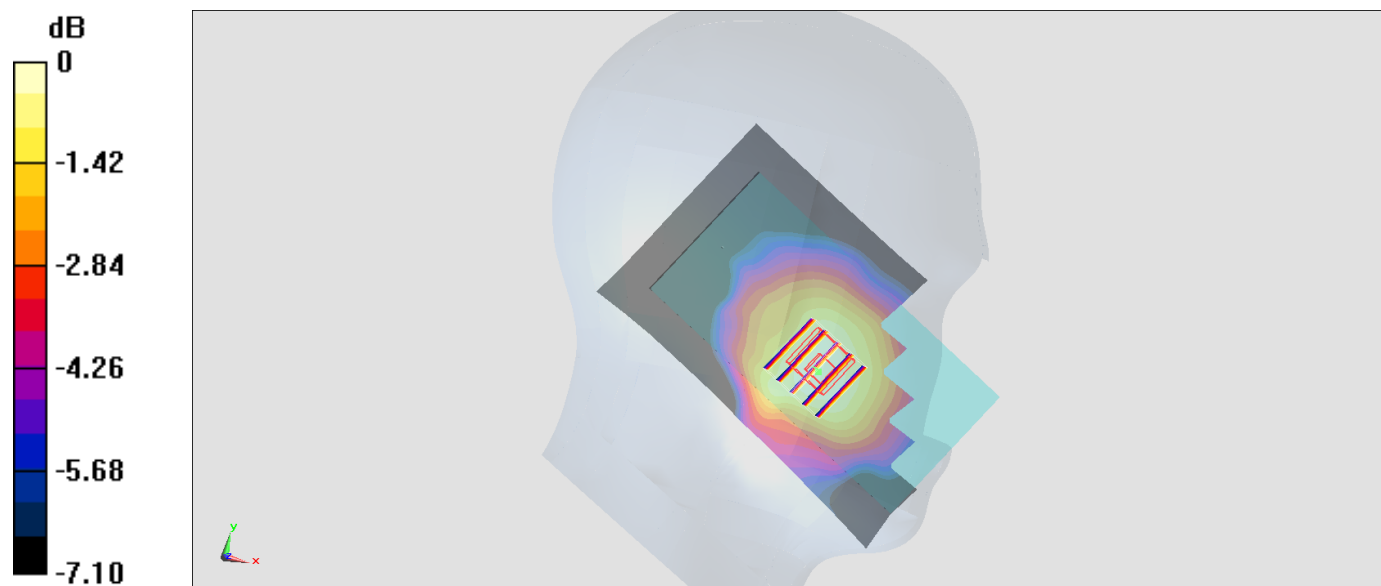
**Zoom Scan (5x5x7)/Cube 0:** Measurement grid: dx=8mm, dy=8mm, dz=5mm

Reference Value = 12.16 V/m; Power Drift = 0.06 dB

Peak SAR (extrapolated) = 0.129 W/kg

**SAR(1 g) = 0.101 W/kg; SAR(10 g) = 0.080 W/kg**

Maximum value of SAR (measured) = 0.120 W/kg



0 dB = 0.120 W/kg = -9.21 dBW/kg

**#02\_GSM1900\_GPRS (4 Tx slots)\_Left Cheek\_Ch810**

Communication System: PCS ; Frequency: 1909.8 MHz;Duty Cycle: 1:2.08

Medium: HSL\_1900\_170511 Medium parameters used:  $f = 1910$  MHz;  $\sigma = 1.406$  S/m;  $\epsilon_r = 38.323$ ;  $\rho = 1000$  kg/m<sup>3</sup>

Ambient Temperature : 23.4 °C ; Liquid Temperature : 22.4 °C

DASY5 Configuration:

- Probe: ES3DV3 - SN3270; ConvF(5.08, 5.08, 5.08); Calibrated: 2016/8/26;
- Sensor-Surface: 3mm (Mechanical Surface Detection)
- Electronics: DAE4 Sn778; Calibrated: 2016/5/12
- Phantom: SAM\_Right; Type: QD000P40CD; Serial: 1884
- Measurement SW: DASY52, Version 52.8 (8);SEMCAD X Version 14.6.10 (7331)

**Area Scan (71x121x1):** Interpolated grid: dx=1.500 mm, dy=1.500 mm

Maximum value of SAR (interpolated) = 0.133 W/kg

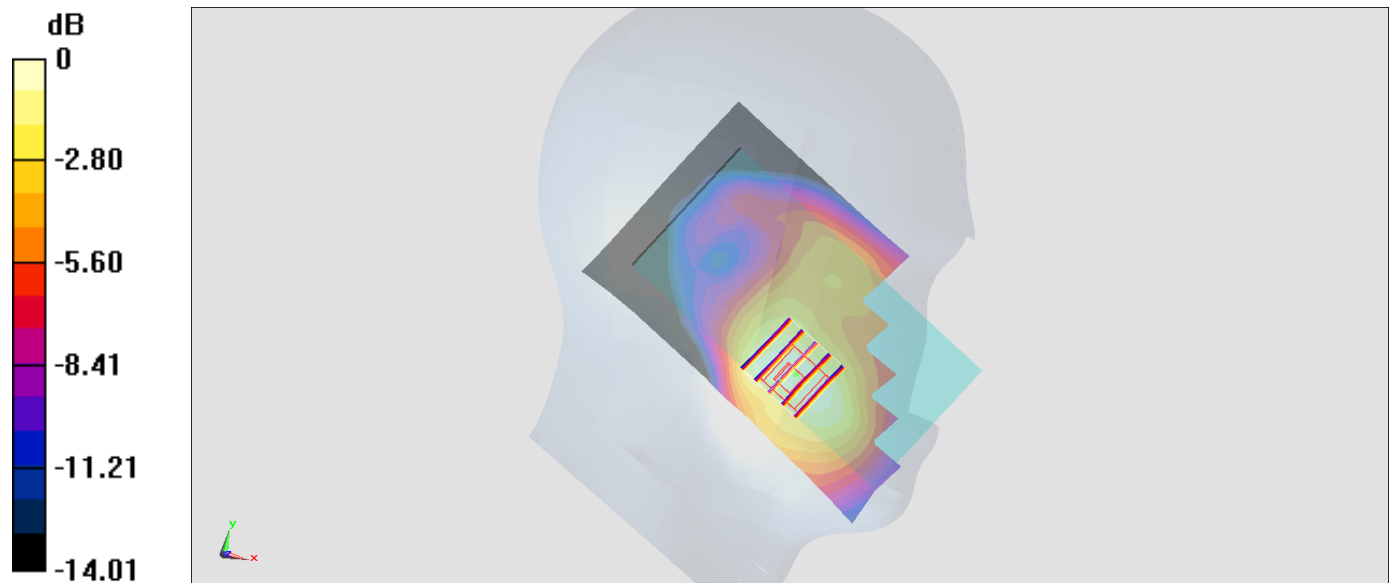
**Zoom Scan (5x5x7)/Cube 0:** Measurement grid: dx=8mm, dy=8mm, dz=5mm

Reference Value = 8.999 V/m; Power Drift = -0.09 dB

Peak SAR (extrapolated) = 0.172 W/kg

**SAR(1 g) = 0.115 W/kg; SAR(10 g) = 0.074 W/kg**

Maximum value of SAR (measured) = 0.134 W/kg



0 dB = 0.134 W/kg = -8.73 dBW/kg

### #03\_WLAN2.4GHz\_802.11b 1Mbps\_Left Cheek\_Ch6

Communication System: 802.11b ; Frequency: 2437 MHz;Duty Cycle: 1:1

Medium: HSL\_2450\_170519 Medium parameters used :  $f = 2437$  MHz;  $\sigma = 1.77$  mho/m;  $\epsilon_r = 39.6$ ;  $\rho = 1000$  kg/m<sup>3</sup>

Ambient Temperature : 23.2 °C ; Liquid Temperature : 22.2 °C

#### DASY4 Configuration:

- Probe: ES3DV3 - SN3270; ConvF(4.51, 4.51, 4.51); Calibrated: 2016/8/26
- Sensor-Surface: 3mm (Mechanical Surface Detection)
- Electronics: DAE4 Sn916; Calibrated: 2016/12/15
- Phantom: SAM\_Right; Type: QD000P40CD; Serial: TP:1815
- ;Postprocessing SW: SEMCAD, V1.8 Build 159

**Area Scan (81x151x1):** Measurement grid: dx=12mm, dy=12mm

Maximum value of SAR (interpolated) = 0.355 mW/g

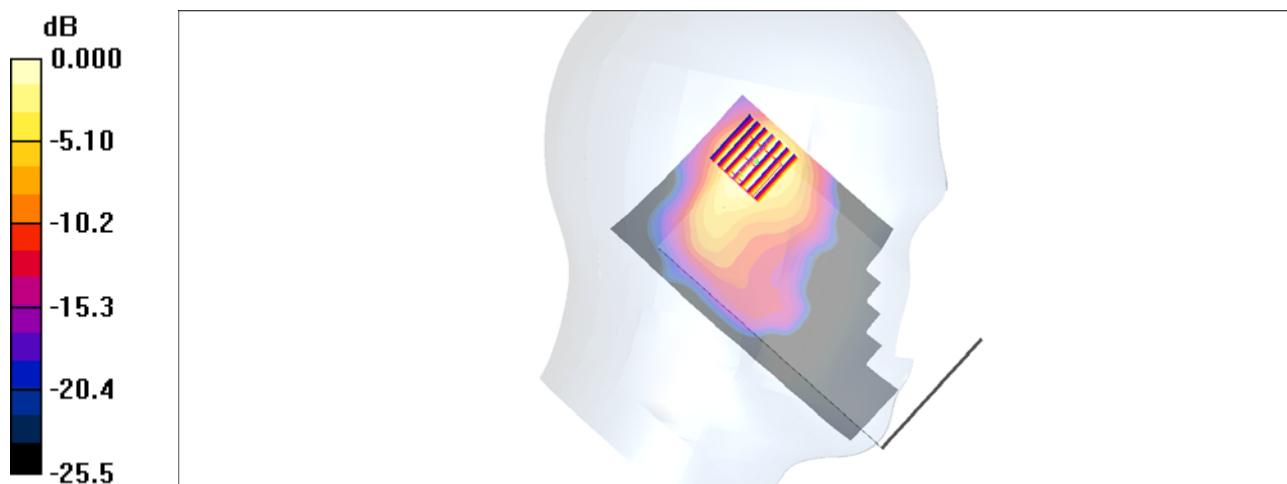
**Zoom Scan (7x7x7)/Cube 0:** Measurement grid: dx=5mm, dy=5mm, dz=5mm

Reference Value = 8.96 V/m; Power Drift = -0.001 dB

Peak SAR (extrapolated) = 0.554 W/kg

**SAR(1 g) = 0.258 mW/g; SAR(10 g) = 0.122 mW/g**

Maximum value of SAR (measured) = 0.336 mW/g



0 dB = 0.336mW/g

### #04\_WLAN5GHz\_802.11n-HT40 MCS0\_Left Cheek\_Ch62

Communication System: 802.11n; Frequency: 5310 MHz; Duty Cycle: 1:1.024

Medium: HSL\_5G\_170520 Medium parameters used:  $f = 5310$  MHz;  $\sigma = 4.67$  mho/m;  $\epsilon_r = 36.7$ ;  $\rho = 1000$  kg/m<sup>3</sup>

Ambient Temperature : 23.3 °C; Liquid Temperature : 22.3 °C

#### DASY4 Configuration:

- Probe: EX3DV4 - SN3955; ConvF(5.04, 5.04, 5.04); Calibrated: 2016/11/24
- Sensor-Surface: 1.4mm (Mechanical Surface Detection)
- Electronics: DAE4 Sn1399; Calibrated: 2016/11/17
- Phantom: SAM\_Right; Type: QD000P40CD; Serial: TP:1815
- ;Postprocessing SW: SEMCAD, V1.8 Build 159

**Area Scan (101x181x1):** Measurement grid: dx=10mm, dy=10mm

Maximum value of SAR (interpolated) = 1.31 mW/g

**Zoom Scan (7x7x7)/Cube 0:** Measurement grid: dx=4mm, dy=4mm, dz=1.4mm

Reference Value = 6.86 V/m; Power Drift = -0.124 dB

Peak SAR (extrapolated) = 2.55 W/kg

**SAR(1 g) = 0.581 mW/g; SAR(10 g) = 0.182 mW/g**

Maximum value of SAR (measured) = 1.38 mW/g



0 dB = 1.38mW/g

### #05\_WLAN5GHz\_802.11ac-VHT80 MCS0\_Left Cheek\_Ch106

Communication System: 802.11ac; Frequency: 5530 MHz; Duty Cycle: 1:1.089

Medium: HSL\_5G\_170520 Medium parameters used:  $f = 5530$  MHz;  $\sigma = 4.89$  mho/m;  $\epsilon_r = 36.4$ ;  $\rho = 1000$  kg/m<sup>3</sup>

Ambient Temperature : 23.3 °C; Liquid Temperature : 22.3 °C

#### DASY4 Configuration:

- Probe: EX3DV4 - SN3955; ConvF(4.5, 4.5, 4.5); Calibrated: 2016/11/24
- Sensor-Surface: 1.4mm (Mechanical Surface Detection)
- Electronics: DAE4 Sn1399; Calibrated: 2016/11/17
- Phantom: SAM\_Right; Type: QD000P40CD; Serial: TP:1815
- ;Postprocessing SW: SEMCAD, V1.8 Build 159

**Area Scan (101x181x1):** Measurement grid: dx=10mm, dy=10mm

Maximum value of SAR (interpolated) = 0.835 mW/g

**Zoom Scan (7x7x7)/Cube 0:** Measurement grid: dx=4mm, dy=4mm, dz=1.4mm

Reference Value = 4.66 V/m; Power Drift = 0.040 dB

Peak SAR (extrapolated) = 1.41 W/kg

**SAR(1 g) = 0.307 mW/g; SAR(10 g) = 0.090 mW/g**

Maximum value of SAR (measured) = 0.853 mW/g



0 dB = 0.853mW/g

## #06\_Bluetooth\_1Mbps\_Left Cheek\_Ch0

Communication System: Bluetooth; Frequency: 2402 MHz; Duty Cycle: 1:1.289

Medium: HSL\_2450\_170527 Medium parameters used:  $f = 2402$  MHz;  $\sigma = 1.729$  S/m;  $\epsilon_r = 40.421$ ;

$\rho = 1000$  kg/m<sup>3</sup>

Ambient Temperature : 23.5 °C; Liquid Temperature : 22.5 °C

### DASY5 Configuration

- Probe: ES3DV3 - SN3169; ConvF(4.5, 4.5, 4.5); Calibrated: 2017/5/11;
- Sensor-Surface: 3mm (Mechanical Surface Detection)
- Electronics: DAE4 Sn853; Calibrated: 2016/7/11
- Phantom: SAM\_Right; Type: QD000P40CD; Serial: S/N:1801
- Measurement SW: DASY52, Version 52.8 (8); SEMCAD X Version 14.6.10 (7373)

**Area Scan (81x151x1):** Interpolated grid: dx=1.200 mm, dy=1.200 mm

Maximum value of SAR (interpolated) = 0.147 W/kg

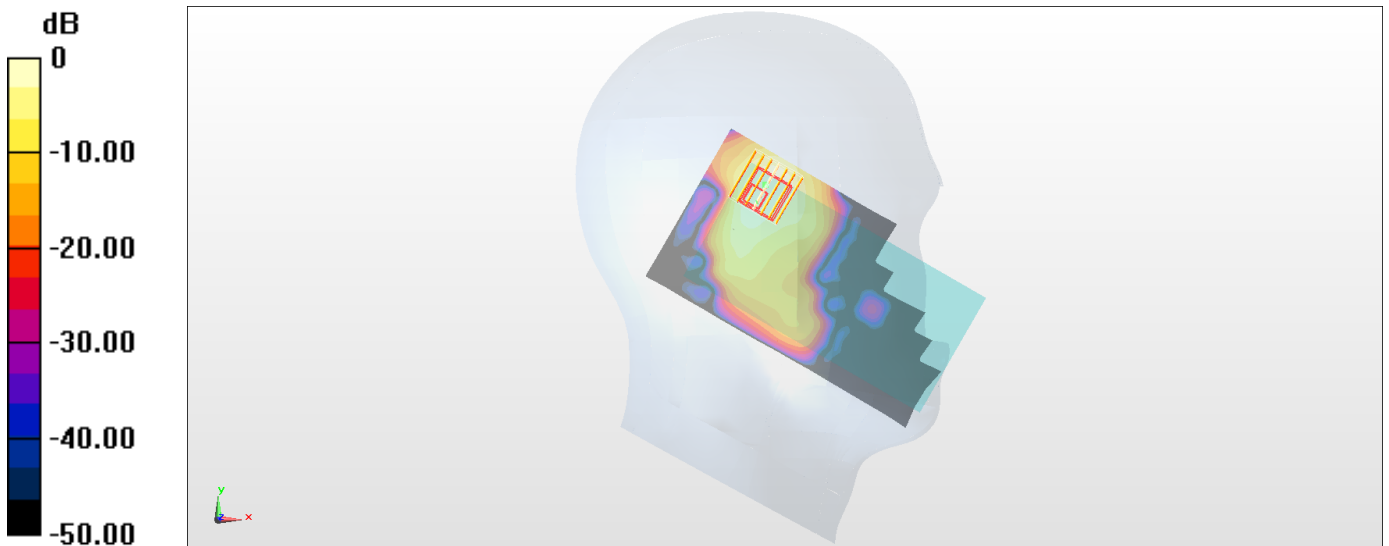
**Zoom Scan (7x7x7)/Cube 0:** Measurement grid: dx=5mm, dy=5mm, dz=5mm

Reference Value = 6.822 V/m; Power Drift = 0.01 dB

Peak SAR (extrapolated) = 0.230 W/kg

**SAR(1 g) = 0.106 W/kg; SAR(10 g) = 0.050 W/kg**

Maximum value of SAR (measured) = 0.140 W/kg



0 dB = 0.140 W/kg = -8.54 dBW/kg

## #07\_GSM850\_GPRS (4 Tx slots)\_Back\_10mm\_Ch128

Communication System: GSM850 ; Frequency: 824.2 MHz; Duty Cycle: 1:2.08

Medium: MSL\_850\_170510 Medium parameters used:  $f = 824.2$  MHz;  $\sigma = 0.958$  S/m;  $\epsilon_r = 57.034$ ;  $\rho = 1000$  kg/m<sup>3</sup>

Ambient Temperature : 23.5 °C ; Liquid Temperature : 22.5 °C

DASY5 Configuration:

- Probe: EX3DV4 - SN3925; ConvF(9.91, 9.91, 9.91); Calibrated: 2016/5/26;
- Sensor-Surface: 1.4mm (Mechanical Surface Detection)
- Electronics: DAE3 Sn495; Calibrated: 2016/5/27
- Phantom: SAM\_Right; Type: QD000P40CD; Serial: 1884
- Measurement SW: DASY52, Version 52.8 (8); SEMCAD X Version 14.6.10 (7331)

**Area Scan (71x121x1):** Interpolated grid: dx=1.500 mm, dy=1.500 mm

Maximum value of SAR (interpolated) = 0.198 W/kg

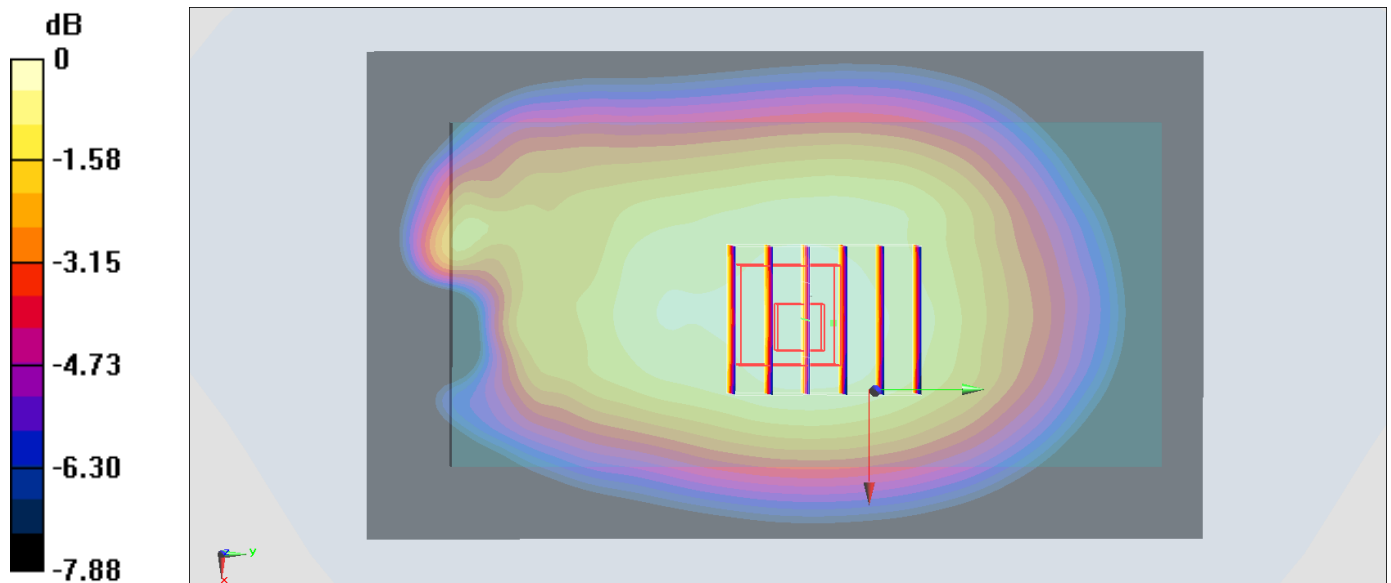
**Zoom Scan (5x6x7)/Cube 0:** Measurement grid: dx=8mm, dy=8mm, dz=5mm

Reference Value = 10.17 V/m; Power Drift = 0.05 dB

Peak SAR (extrapolated) = 0.230 W/kg

**SAR(1 g) = 0.174 W/kg; SAR(10 g) = 0.136 W/kg**

Maximum value of SAR (measured) = 0.209 W/kg



0 dB = 0.209 W/kg = -6.80 dBW/kg

## #08\_GSM1900\_GPRS (4 Tx slots)\_Back\_10mm\_Ch810

Communication System: PCS ; Frequency: 1909.8 MHz; Duty Cycle: 1:2.08

Medium: MSL\_1900\_170510 Medium parameters used:  $f = 1910$  MHz;  $\sigma = 1.548$  S/m;  $\epsilon_r = 52.973$ ;  $\rho = 1000$  kg/m<sup>3</sup>

Ambient Temperature : 23.7 °C ; Liquid Temperature : 22.7 °C

DASY5 Configuration:

- Probe: EX3DV4 - SN3925; ConvF(8, 8, 8); Calibrated: 2016/5/26;
- Sensor-Surface: 1.4mm (Mechanical Surface Detection)
- Electronics: DAE3 Sn495; Calibrated: 2016/5/27
- Phantom: SAM\_Right; Type: QD000P40CD; Serial: 1884
- Measurement SW: DASY52, Version 52.8 (8); SEMCAD X Version 14.6.10 (7331)

**Area Scan (71x121x1):** Interpolated grid: dx=1.500 mm, dy=1.500 mm

Maximum value of SAR (interpolated) = 0.244 W/kg

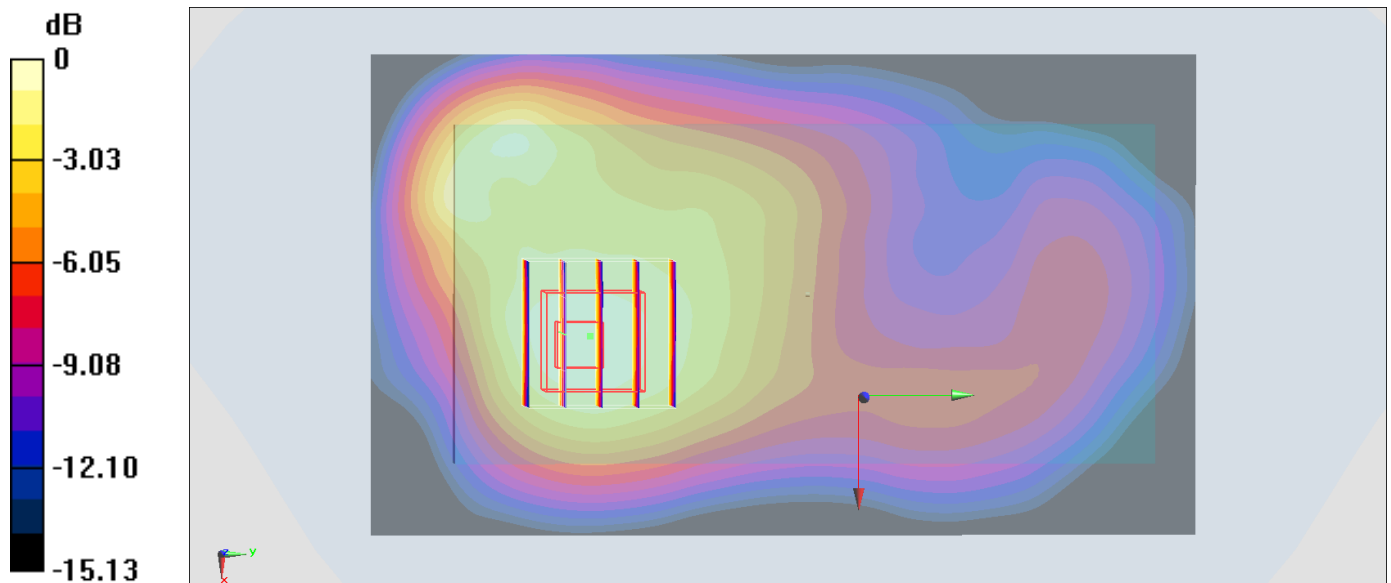
**Zoom Scan (5x5x7)/Cube 0:** Measurement grid: dx=8mm, dy=8mm, dz=5mm

Reference Value = 12.46 V/m; Power Drift = -0.06 dB

Peak SAR (extrapolated) = 0.291 W/kg

**SAR(1 g) = 0.186 W/kg; SAR(10 g) = 0.116 W/kg**

Maximum value of SAR (measured) = 0.246 W/kg



0 dB = 0.246 W/kg = -6.09 dBW/kg



### #09\_WLAN2.4GHz\_802.11b 1Mbps\_Back\_10mm\_Ch6

Communication System: 802.11b ; Frequency: 2437 MHz;Duty Cycle: 1:1

Medium: MSL\_2450\_170519 Medium parameters used :  $f = 2437$  MHz;  $\sigma = 1.93$  mho/m;  $\epsilon_r = 54.9$ ;  $\rho = 1000$  kg/m<sup>3</sup>

Ambient Temperature : 23.2 °C ; Liquid Temperature : 22.2 °C

DASY4 Configuration:

- Probe: ES3DV3 - SN3270; ConvF(4.28, 4.28, 4.28); Calibrated: 2016/8/26
- Sensor-Surface: 3mm (Mechanical Surface Detection)
- Electronics: DAE4 Sn916; Calibrated: 2016/12/15
- Phantom: SAM\_Right; Type: QD000P40CD; Serial: TP:1815
- ;Postprocessing SW: SEMCAD, V1.8 Build 159

**Area Scan (81x151x1):** Measurement grid: dx=12mm, dy=12mm

Maximum value of SAR (interpolated) = 0.111 mW/g

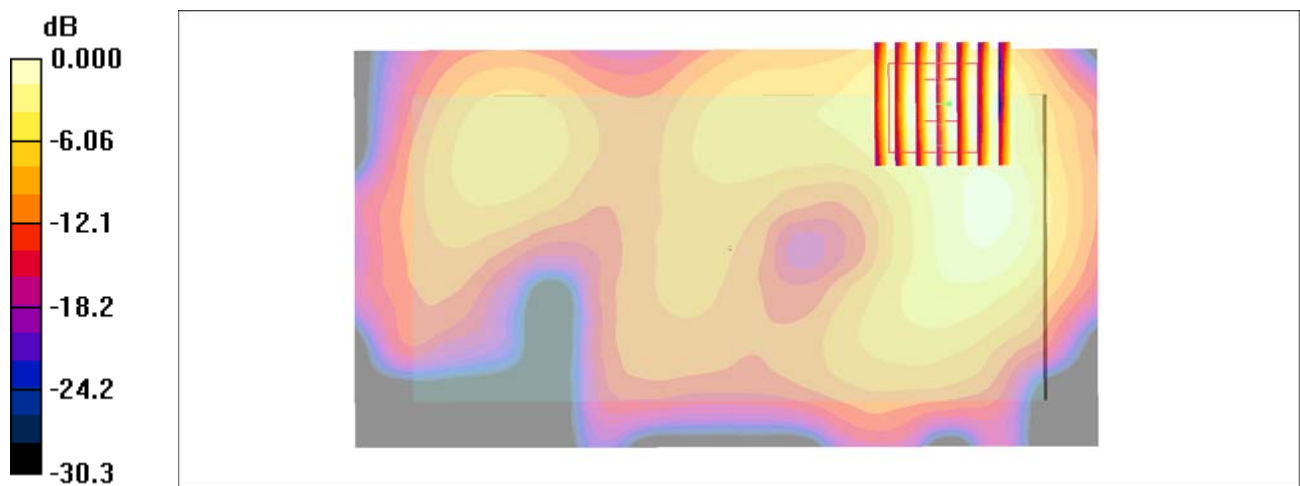
**Zoom Scan (7x7x7)/Cube 0:** Measurement grid: dx=5mm, dy=5mm, dz=5mm

Reference Value = 6.57 V/m; Power Drift = 0.009 dB

Peak SAR (extrapolated) = 0.168 W/kg

**SAR(1 g) = 0.081 mW/g; SAR(10 g) = 0.039 mW/g**

Maximum value of SAR (measured) = 0.105 mW/g



0 dB = 0.105mW/g

## #10\_Bluetooth\_1Mbps\_Back\_10mm\_Ch0

Communication System: Bluetooth ; Frequency: 2402 MHz;Duty Cycle: 1:1.289

Medium: MSL\_2450\_170527 Medium parameters used:  $f = 2402$  MHz;  $\sigma = 1.867$  S/m;  $\epsilon_r = 53.71$ ;

$\rho = 1000$  kg/m<sup>3</sup>

Ambient Temperature : 23.5 °C ; Liquid Temperature : 22.5 °C

### DASY5 Configuration

- Probe: ES3DV3 - SN3169; ConvF(4.28, 4.28, 4.28); Calibrated: 2017/5/11;
- Sensor-Surface: 3mm (Mechanical Surface Detection)
- Electronics: DAE4 Sn853; Calibrated: 2016/7/11
- Phantom: SAM\_Right; Type: QD000P40CD; Serial: S/N:1801
- Measurement SW: DASY52, Version 52.8 (8); SEMCAD X Version 14.6.10 (7373)

**Area Scan (81x151x1):** Interpolated grid: dx=1.200 mm, dy=1.200 mm

Maximum value of SAR (interpolated) = 0.0495 W/kg

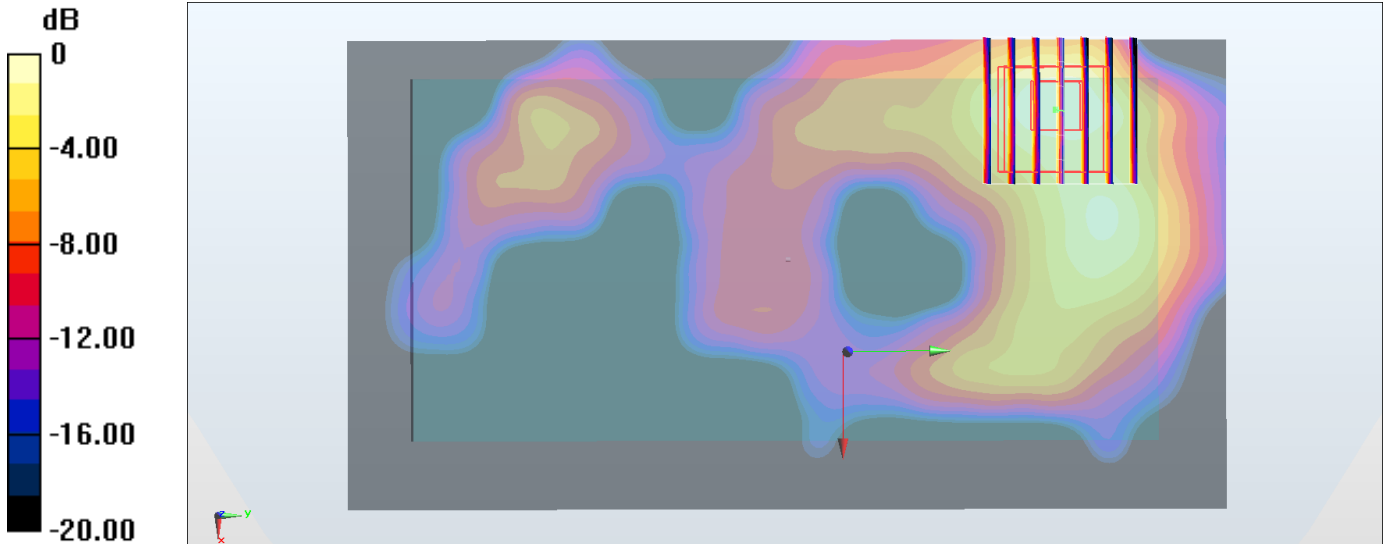
**Zoom Scan (7x7x7)/Cube 0:** Measurement grid: dx=5mm, dy=5mm, dz=5mm

Reference Value = 2.869 V/m; Power Drift = 0.14 dB

Peak SAR (extrapolated) = 0.0730 W/kg

**SAR(1 g) = 0.036 W/kg; SAR(10 g) = 0.017 W/kg**

Maximum value of SAR (measured) = 0.0475 W/kg



0 dB = 0.0475 W/kg = -13.23 dBW/kg

### #11\_WLAN5GHz\_802.11n-HT40 MCS0\_Back\_0mm\_Ch62

Communication System: 802.11n; Frequency: 5310 MHz; Duty Cycle: 1:1.024

Medium: MSL\_5G\_170520 Medium parameters used:  $f = 5310$  MHz;  $\sigma = 5.49$  mho/m;  $\epsilon_r = 47.8$ ;  $\rho = 1000$  kg/m<sup>3</sup>

Ambient Temperature : 23.3 °C ; Liquid Temperature : 22.3 °C

#### DASY4 Configuration:

- Probe: EX3DV4 - SN3955; ConvF(4.51, 4.51, 4.51); Calibrated: 2016/11/24
- Sensor-Surface: 1.4mm (Mechanical Surface Detection)
- Electronics: DAE4 Sn1399; Calibrated: 2016/11/17
- Phantom: SAM\_Right; Type: QD000P40CD; Serial: TP:1815
- ;Postprocessing SW: SEMCAD, V1.8 Build 159

**Area Scan (91x61x1):** Measurement grid: dx=10mm, dy=10mm

Maximum value of SAR (interpolated) = 8.21 mW/g

**Zoom Scan (7x7x7)/Cube 0:** Measurement grid: dx=4mm, dy=4mm, dz=1.4mm

Reference Value = 19.3 V/m; Power Drift = 0.084 dB

Peak SAR (extrapolated) = 22.2 W/kg

**SAR(1 g) = 3.65 mW/g; SAR(10 g) = 0.677 mW/g**

Maximum value of SAR (measured) = 9.94 mW/g



0 dB = 9.94mW/g

### #12\_WLAN5GHz\_802.11ac-VHT80 MCS0\_Back\_0mm\_Ch106

Communication System: 802.11ac; Frequency: 5530 MHz; Duty Cycle: 1:1.089

Medium: MSL\_5G\_170520 Medium parameters used:  $f = 5530 \text{ MHz}$ ;  $\sigma = 5.77 \text{ mho/m}$ ;  $\epsilon_r = 47.5$ ;  $\rho = 1000 \text{ kg/m}^3$

Ambient Temperature :  $23.3 \text{ }^\circ\text{C}$ ; Liquid Temperature :  $22.3 \text{ }^\circ\text{C}$

#### DASY4 Configuration:

- Probe: EX3DV4 - SN3955; ConvF(3.91, 3.91, 3.91); Calibrated: 2016/11/24
- Sensor-Surface: 1.4mm (Mechanical Surface Detection)
- Electronics: DAE4 Sn1399; Calibrated: 2016/11/17
- Phantom: SAM\_Right; Type: QD000P40CD; Serial: TP:1815
- ;Postprocessing SW: SEMCAD, V1.8 Build 159

**Area Scan (101x61x1):** Measurement grid:  $dx=10\text{mm}$ ,  $dy=10\text{mm}$

Maximum value of SAR (interpolated) =  $4.77 \text{ mW/g}$

**Zoom Scan (7x7x7)/Cube 0:** Measurement grid:  $dx=4\text{mm}$ ,  $dy=4\text{mm}$ ,  $dz=1.4\text{mm}$

Reference Value =  $13.2 \text{ V/m}$ ; Power Drift =  $-0.146 \text{ dB}$

Peak SAR (extrapolated) =  $8.85 \text{ W/kg}$

**SAR(1 g) =  $1.53 \text{ mW/g}$ ; SAR(10 g) =  $0.304 \text{ mW/g}$**

Maximum value of SAR (measured) =  $4.89 \text{ mW/g}$



0 dB =  $4.89\text{mW/g}$

### #13\_GSM850\_GPRS (4 Tx slots)\_Back\_10mm\_Ch128

Communication System: GSM850 ; Frequency: 824.2 MHz; Duty Cycle: 1:2.08

Medium: MSL\_850\_170510 Medium parameters used:  $f = 824.2$  MHz;  $\sigma = 0.958$  S/m;  $\epsilon_r = 57.034$ ;  $\rho = 1000$  kg/m<sup>3</sup>

Ambient Temperature : 23.5 °C ; Liquid Temperature : 22.5 °C

DASY5 Configuration:

- Probe: EX3DV4 - SN3925; ConvF(9.91, 9.91, 9.91); Calibrated: 2016/5/26;
- Sensor-Surface: 1.4mm (Mechanical Surface Detection)
- Electronics: DAE3 Sn495; Calibrated: 2016/5/27
- Phantom: SAM\_Right; Type: QD000P40CD; Serial: 1884
- Measurement SW: DASY52, Version 52.8 (8); SEMCAD X Version 14.6.10 (7331)

**Area Scan (71x121x1):** Interpolated grid: dx=1.500 mm, dy=1.500 mm

Maximum value of SAR (interpolated) = 0.198 W/kg

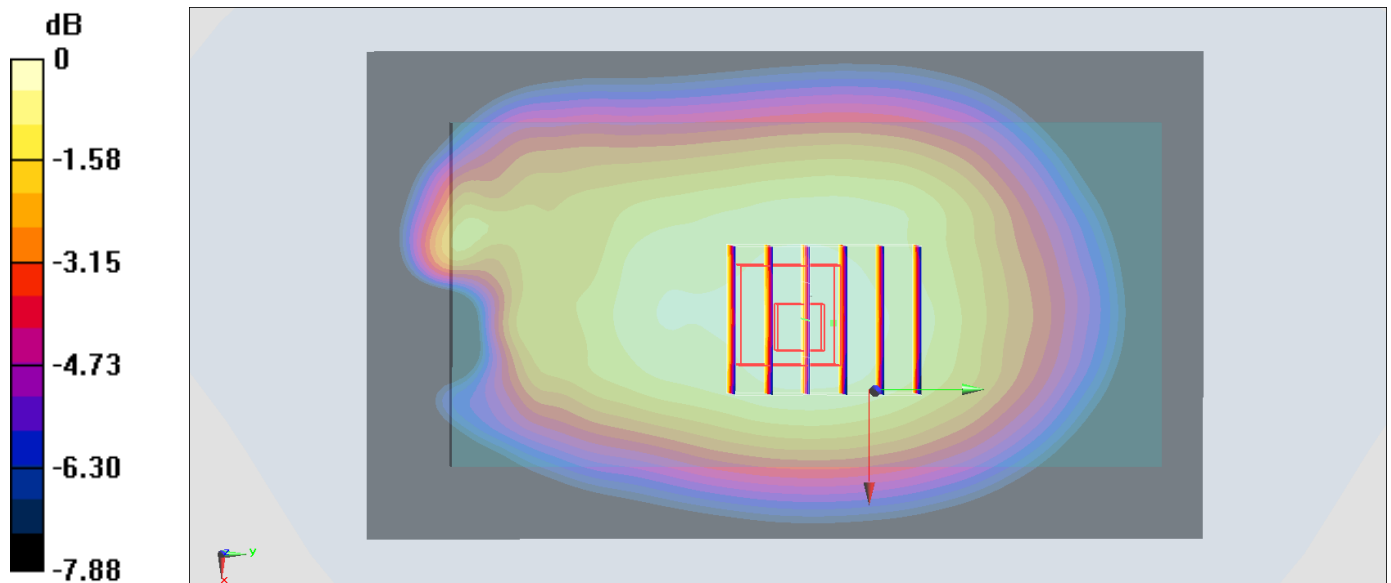
**Zoom Scan (5x6x7)/Cube 0:** Measurement grid: dx=8mm, dy=8mm, dz=5mm

Reference Value = 10.17 V/m; Power Drift = 0.05 dB

Peak SAR (extrapolated) = 0.230 W/kg

**SAR(1 g) = 0.174 W/kg; SAR(10 g) = 0.136 W/kg**

Maximum value of SAR (measured) = 0.209 W/kg



0 dB = 0.209 W/kg = -6.80 dBW/kg

## #14\_GSM1900\_GPRS (4 Tx slots)\_Back\_10mm\_Ch810

Communication System: PCS ; Frequency: 1909.8 MHz; Duty Cycle: 1:2.08

Medium: MSL\_1900\_170510 Medium parameters used:  $f = 1910$  MHz;  $\sigma = 1.548$  S/m;  $\epsilon_r = 52.973$ ;  $\rho = 1000$  kg/m<sup>3</sup>

Ambient Temperature : 23.7 °C ; Liquid Temperature : 22.7 °C

DASY5 Configuration:

- Probe: EX3DV4 - SN3925; ConvF(8, 8, 8); Calibrated: 2016/5/26;
- Sensor-Surface: 1.4mm (Mechanical Surface Detection)
- Electronics: DAE3 Sn495; Calibrated: 2016/5/27
- Phantom: SAM\_Right; Type: QD000P40CD; Serial: 1884
- Measurement SW: DASY52, Version 52.8 (8); SEMCAD X Version 14.6.10 (7331)

**Area Scan (71x121x1):** Interpolated grid: dx=1.500 mm, dy=1.500 mm

Maximum value of SAR (interpolated) = 0.244 W/kg

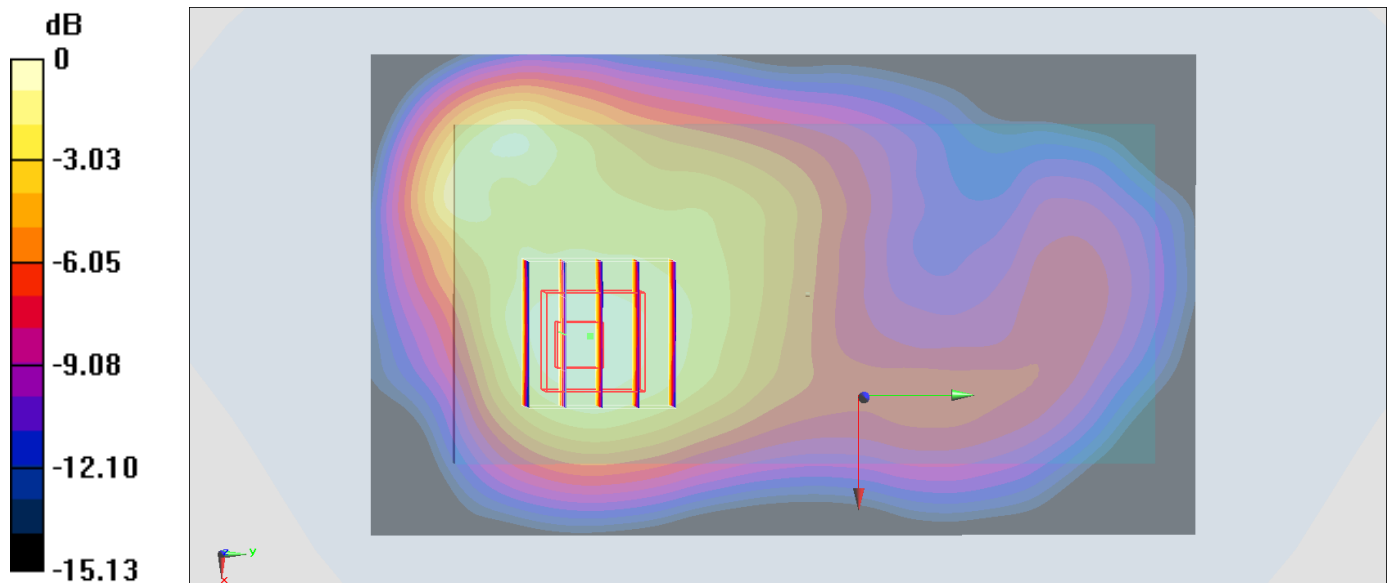
**Zoom Scan (5x5x7)/Cube 0:** Measurement grid: dx=8mm, dy=8mm, dz=5mm

Reference Value = 12.46 V/m; Power Drift = -0.06 dB

Peak SAR (extrapolated) = 0.291 W/kg

**SAR(1 g) = 0.186 W/kg; SAR(10 g) = 0.116 W/kg**

Maximum value of SAR (measured) = 0.246 W/kg



0 dB = 0.246 W/kg = -6.09 dBW/kg

### #15\_WLAN2.4GHz\_802.11b 1Mbps\_Back\_10mm\_Ch6

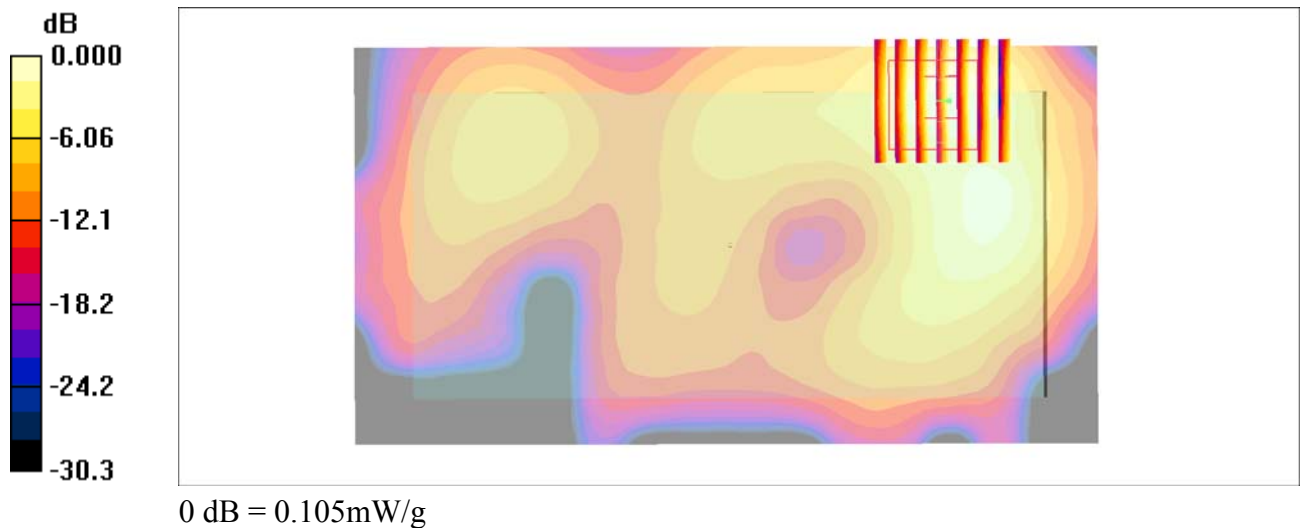
Communication System: 802.11b ; Frequency: 2437 MHz;Duty Cycle: 1:1  
Medium: MSL\_2450\_170519 Medium parameters used :  $f = 2437$  MHz;  $\sigma = 1.93$  mho/m;  $\epsilon_r = 54.9$ ;  $\rho = 1000$  kg/m<sup>3</sup>  
Ambient Temperature : 23.2 °C ; Liquid Temperature : 22.2 °C

#### DASY4 Configuration:

- Probe: ES3DV3 - SN3270; ConvF(4.28, 4.28, 4.28); Calibrated: 2016/8/26
- Sensor-Surface: 3mm (Mechanical Surface Detection)
- Electronics: DAE4 Sn916; Calibrated: 2016/12/15
- Phantom: SAM\_Right; Type: QD000P40CD; Serial: TP:1815
- ;Postprocessing SW: SEMCAD, V1.8 Build 159

**Area Scan (81x151x1):** Measurement grid: dx=12mm, dy=12mm  
Maximum value of SAR (interpolated) = 0.111 mW/g

**Zoom Scan (7x7x7)/Cube 0:** Measurement grid: dx=5mm, dy=5mm, dz=5mm  
Reference Value = 6.57 V/m; Power Drift = 0.009 dB  
Peak SAR (extrapolated) = 0.168 W/kg  
**SAR(1 g) = 0.081 mW/g; SAR(10 g) = 0.039 mW/g**  
Maximum value of SAR (measured) = 0.105 mW/g



### #16\_WLAN5GHz\_802.11n-HT40 MCS0\_Back\_10mm\_Ch62

Communication System: 802.11n; Frequency: 5310 MHz; Duty Cycle: 1:1.024

Medium: MSL\_5G\_170520 Medium parameters used:  $f = 5310$  MHz;  $\sigma = 5.49$  mho/m;  $\epsilon_r = 47.8$ ;  $\rho = 1000$  kg/m<sup>3</sup>

Ambient Temperature : 23.3 °C; Liquid Temperature : 22.3 °C

#### DASY4 Configuration:

- Probe: EX3DV4 - SN3955; ConvF(4.51, 4.51, 4.51); Calibrated: 2016/11/24
- Sensor-Surface: 1.4mm (Mechanical Surface Detection)
- Electronics: DAE4 Sn1399; Calibrated: 2016/11/17
- Phantom: SAM\_Right; Type: QD000P40CD; Serial: TP:1815
- ;Postprocessing SW: SEMCAD, V1.8 Build 159

**Area Scan (91x61x1):** Measurement grid: dx=10mm, dy=10mm

Maximum value of SAR (interpolated) = 0.455 mW/g

**Zoom Scan (7x7x7)/Cube 0:** Measurement grid: dx=4mm, dy=4mm, dz=1.4mm

Reference Value = 8.06 V/m; Power Drift = -0.089 dB

Peak SAR (extrapolated) = 0.796 W/kg

**SAR(1 g) = 0.190 mW/g; SAR(10 g) = 0.063 mW/g**

Maximum value of SAR (measured) = 0.443 mW/g



0 dB = 0.443mW/g



### #17\_WLAN5GHz\_802.11ac-VHT80 MCS0\_Back\_10mm\_Ch106

Communication System: 802.11ac; Frequency: 5530 MHz; Duty Cycle: 1:1.089

Medium: MSL\_5G\_170520 Medium parameters used:  $f = 5530$  MHz;  $\sigma = 5.77$  mho/m;  $\epsilon_r = 47.5$ ;  $\rho = 1000$  kg/m<sup>3</sup>

Ambient Temperature : 23.3 °C; Liquid Temperature : 22.3 °C

#### DASY4 Configuration:

- Probe: EX3DV4 - SN3955; ConvF(3.91, 3.91, 3.91); Calibrated: 2016/11/24
- Sensor-Surface: 1.4mm (Mechanical Surface Detection)
- Electronics: DAE4 Sn1399; Calibrated: 2016/11/17
- Phantom: SAM\_Right; Type: QD000P40CD; Serial: TP:1815
- ;Postprocessing SW: SEMCAD, V1.8 Build 159

**Area Scan (101x61x1):** Measurement grid: dx=10mm, dy=10mm

Maximum value of SAR (interpolated) = 0.220 mW/g

**Zoom Scan (7x7x7)/Cube 0:** Measurement grid: dx=4mm, dy=4mm, dz=1.4mm

Reference Value = 4.99 V/m; Power Drift = 0.112 dB

Peak SAR (extrapolated) = 0.270 W/kg

**SAR(1 g) = 0.076 mW/g; SAR(10 g) = 0.026 mW/g**

Maximum value of SAR (measured) = 0.174 mW/g



0 dB = 0.174mW/g

## #18\_Bluetooth\_1Mbps\_Back\_10mm\_Ch0

Communication System: Bluetooth ; Frequency: 2402 MHz;Duty Cycle: 1:1.289

Medium: MSL\_2450\_170527 Medium parameters used:  $f = 2402$  MHz;  $\sigma = 1.867$  S/m;  $\epsilon_r = 53.71$ ;

$\rho = 1000$  kg/m<sup>3</sup>

Ambient Temperature : 23.5 °C ; Liquid Temperature : 22.5 °C

### DASY5 Configuration

- Probe: ES3DV3 - SN3169; ConvF(4.28, 4.28, 4.28); Calibrated: 2017/5/11;
- Sensor-Surface: 3mm (Mechanical Surface Detection)
- Electronics: DAE4 Sn853; Calibrated: 2016/7/11
- Phantom: SAM\_Right; Type: QD000P40CD; Serial: S/N:1801
- Measurement SW: DASY52, Version 52.8 (8); SEMCAD X Version 14.6.10 (7373)

**Area Scan (81x151x1):** Interpolated grid: dx=1.200 mm, dy=1.200 mm

Maximum value of SAR (interpolated) = 0.0495 W/kg

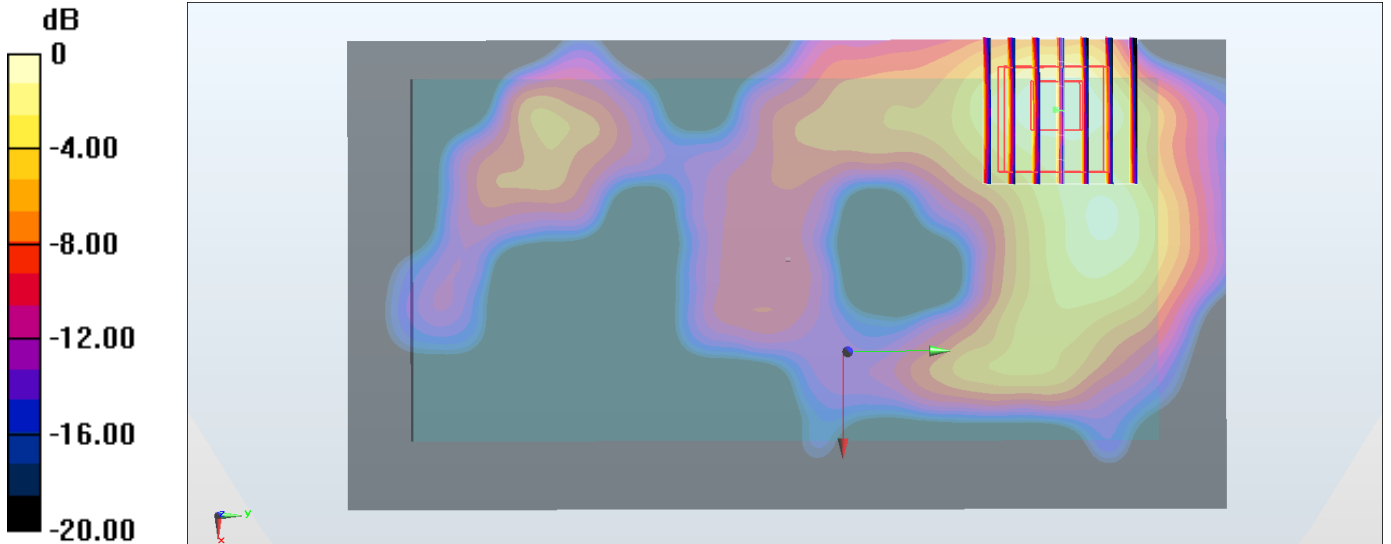
**Zoom Scan (7x7x7)/Cube 0:** Measurement grid: dx=5mm, dy=5mm, dz=5mm

Reference Value = 2.869 V/m; Power Drift = 0.14 dB

Peak SAR (extrapolated) = 0.0730 W/kg

**SAR(1 g) = 0.036 W/kg; SAR(10 g) = 0.017 W/kg**

Maximum value of SAR (measured) = 0.0475 W/kg



0 dB = 0.0475 W/kg = -13.23 dBW/kg