



taoglas
CGGP184A 02

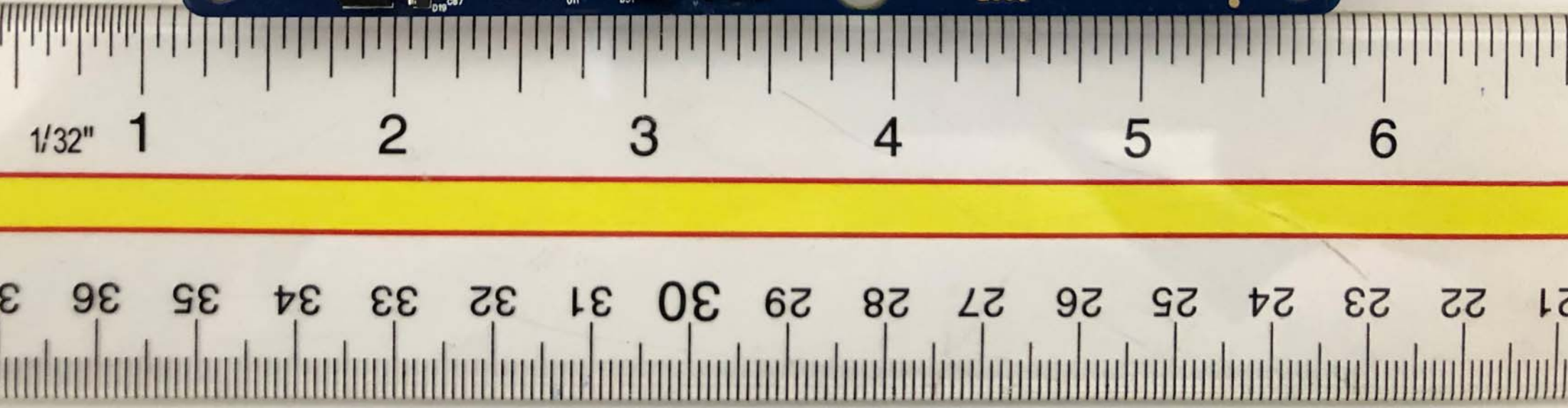
taoglas
PCS.06.A
:837A





taoglas
PCS.06.A
:837A

taoglas
CGGP.18.A.A.02



1/32" 1

2

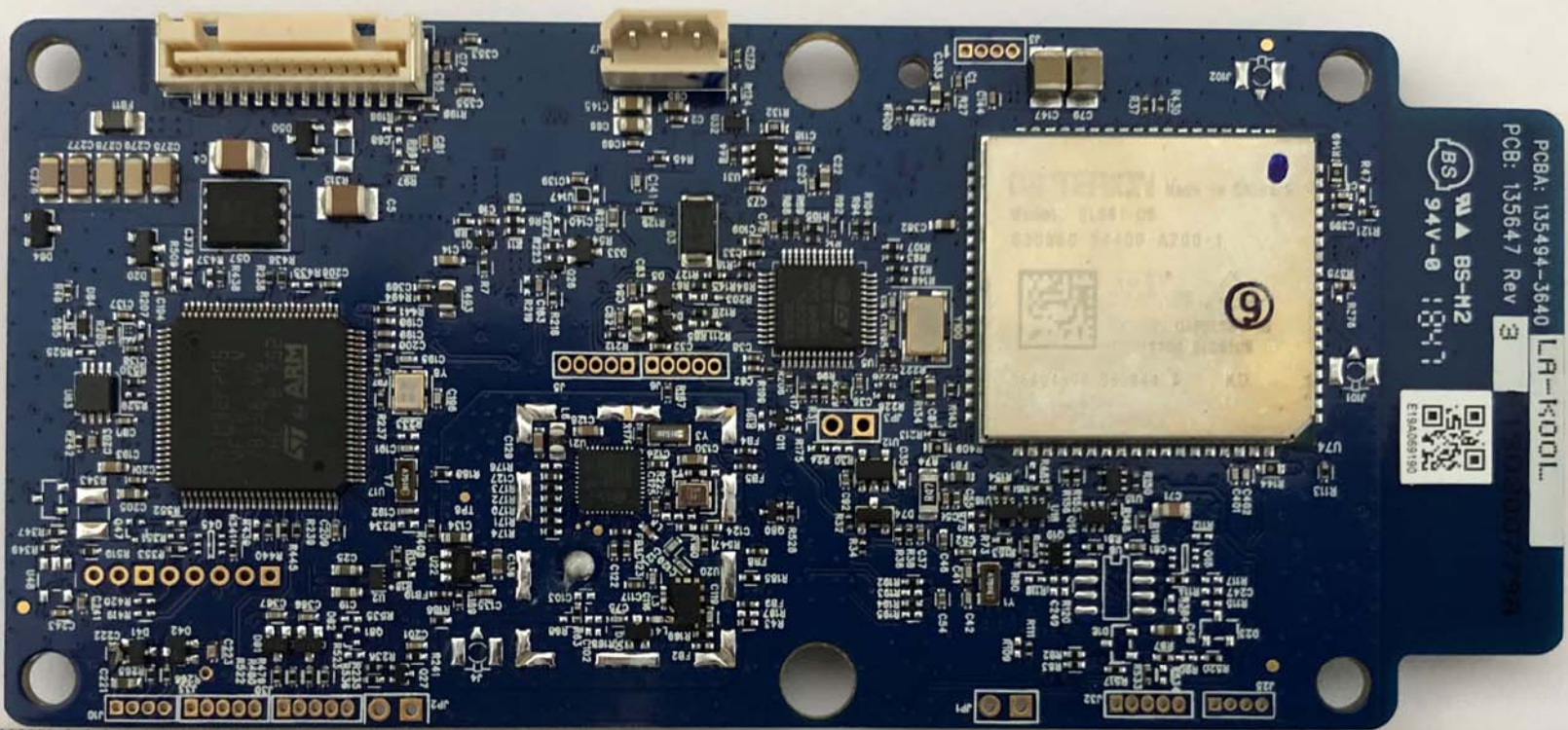
3

4

5

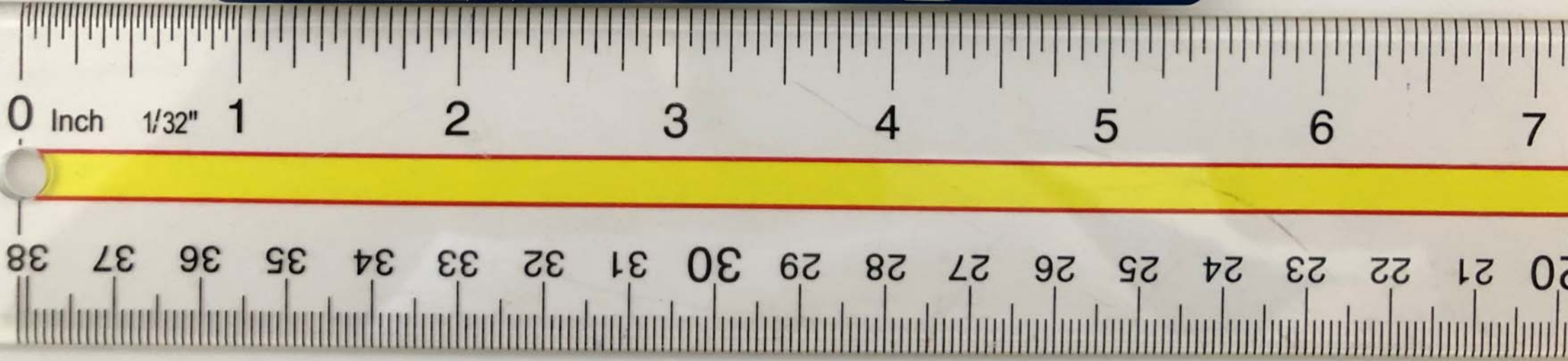
6

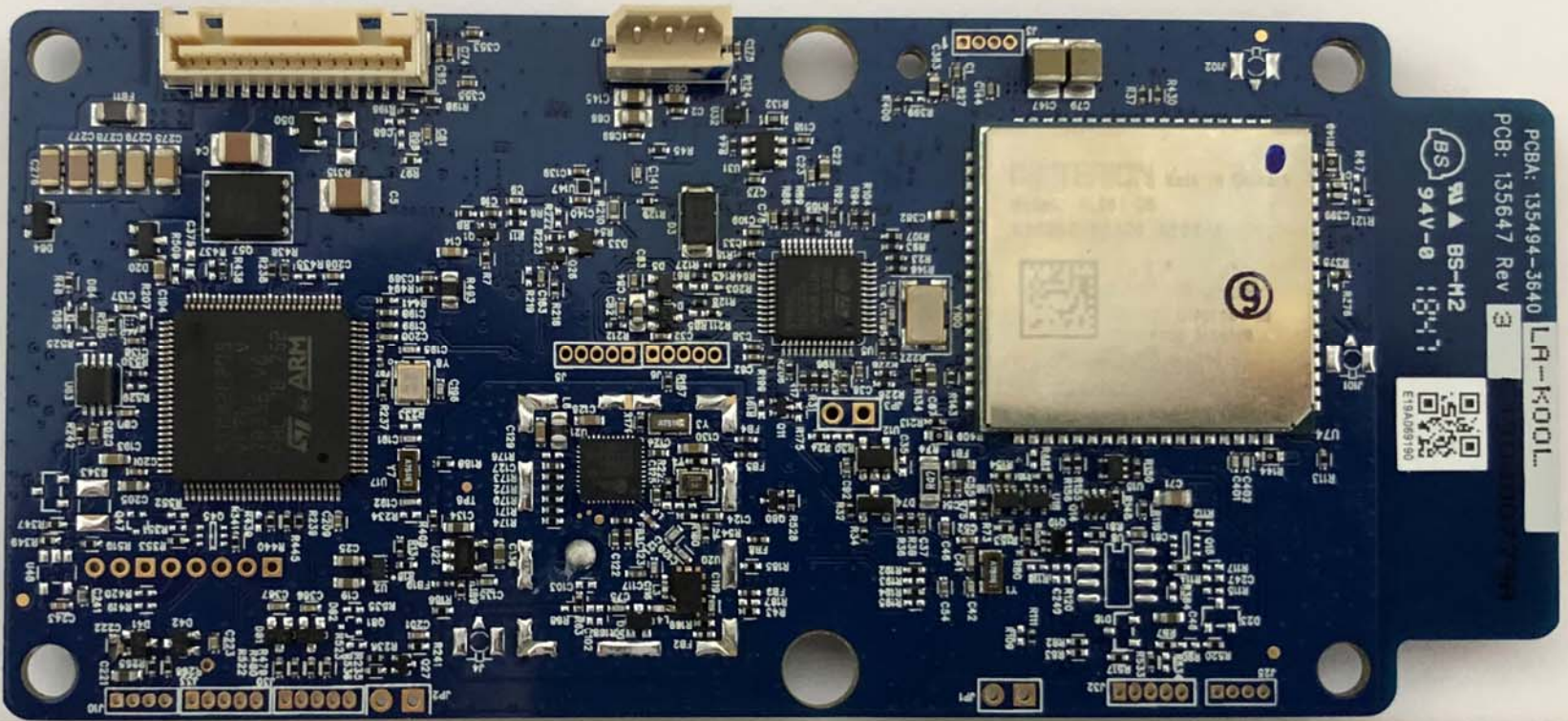
3 36 35 34 33 32 31 30 29 28 27 26 25 24 23 22 21



PCBA: 135494-3640 LA-KOOL
PCB: 135647 Rev 3

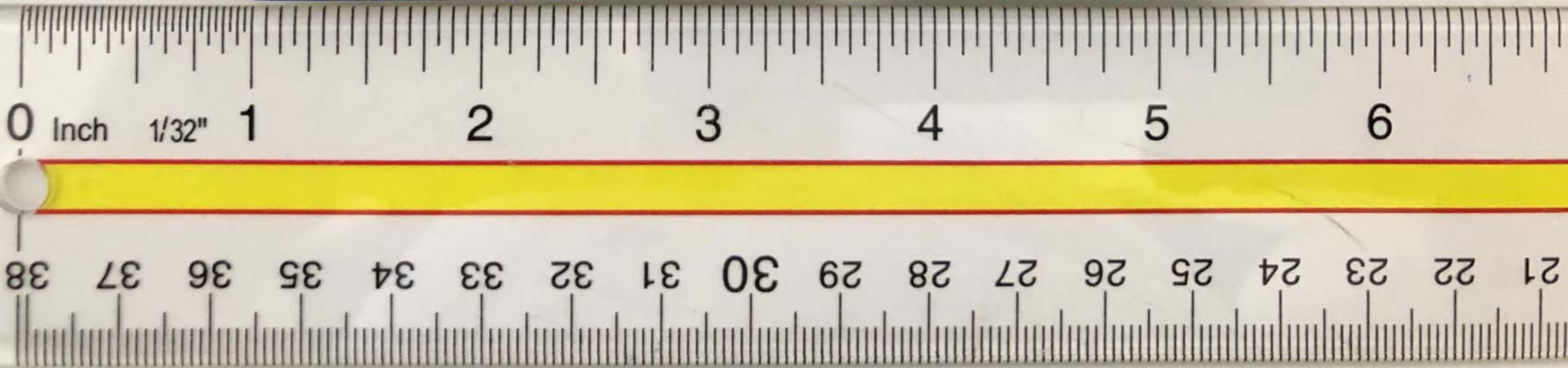
BS 94V-0 1041
BS-M2
ETSA009190





PCBA: 135494-3640
PCB: 135647 Rev 3
LR-KOOL

BS 94V-0 1041
E19AD09190



0 Inch

1/32"

1

2

3

4

5

6

38

37

36

35

34

33

32

31

30

29

28

27

26

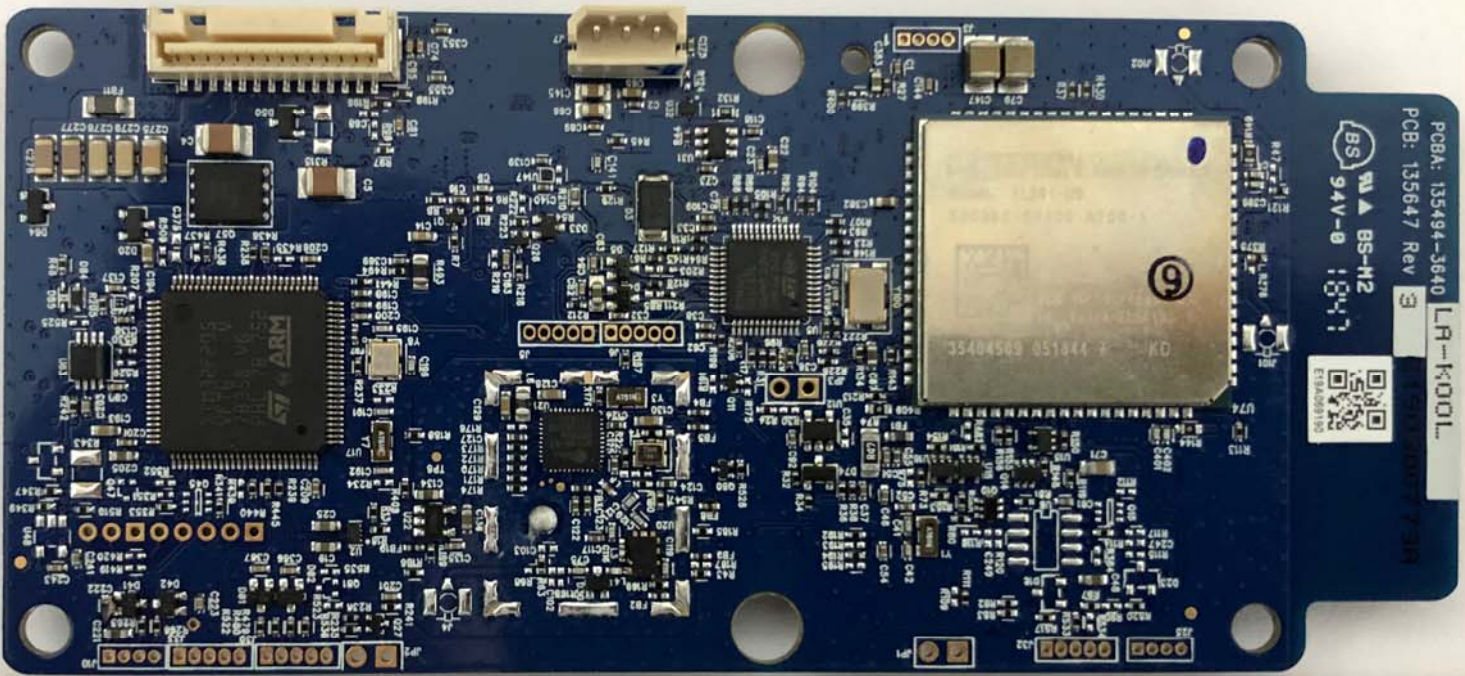
25

24

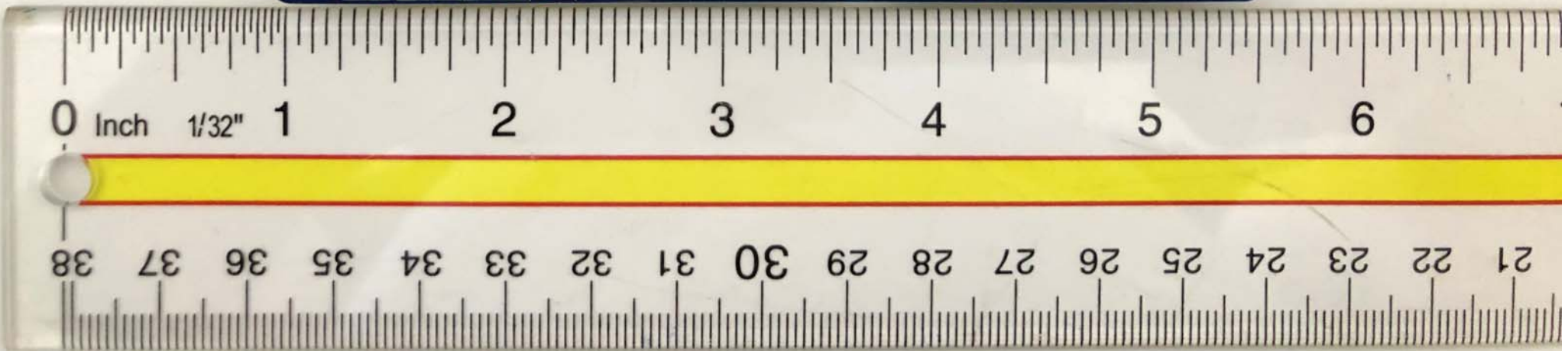
23

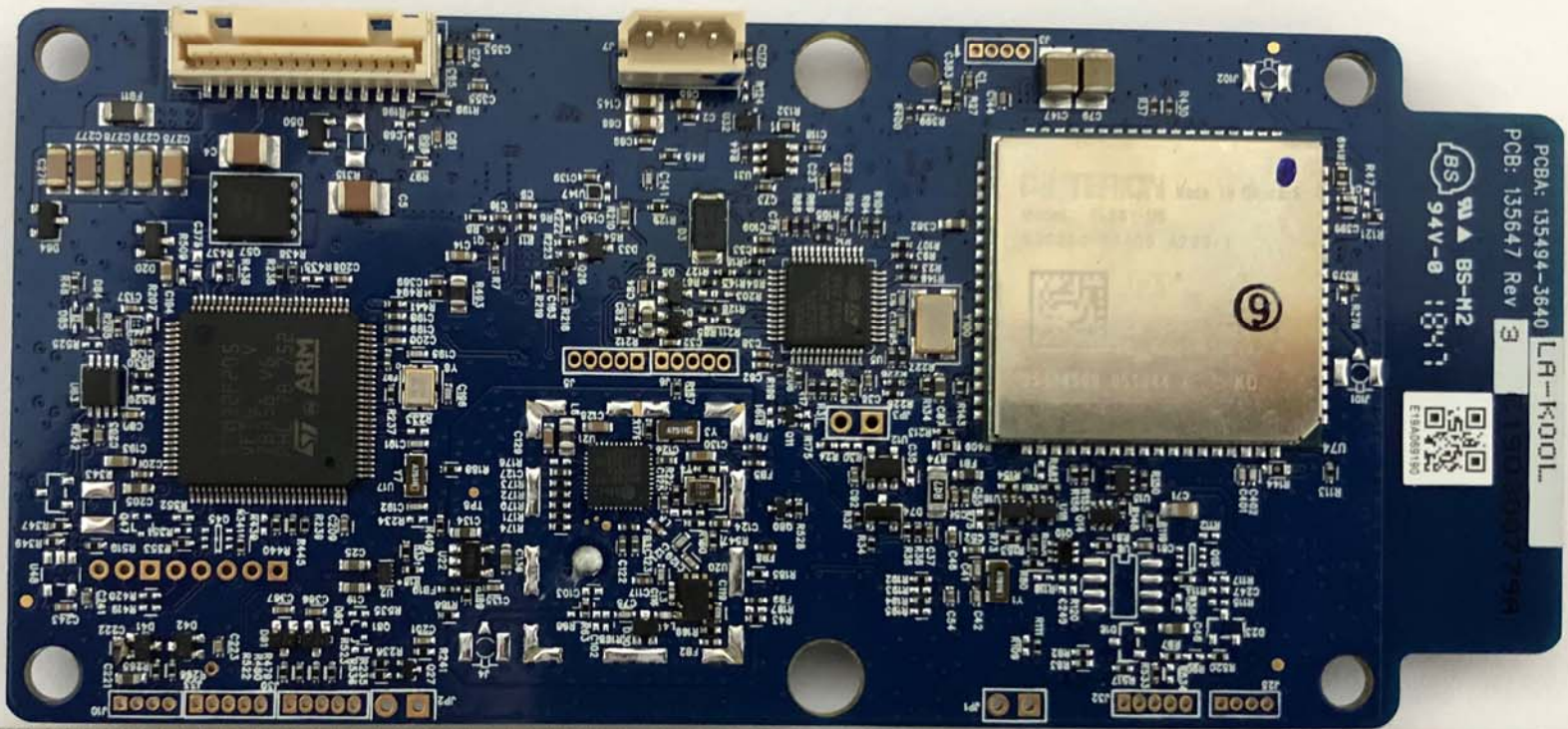
22

21

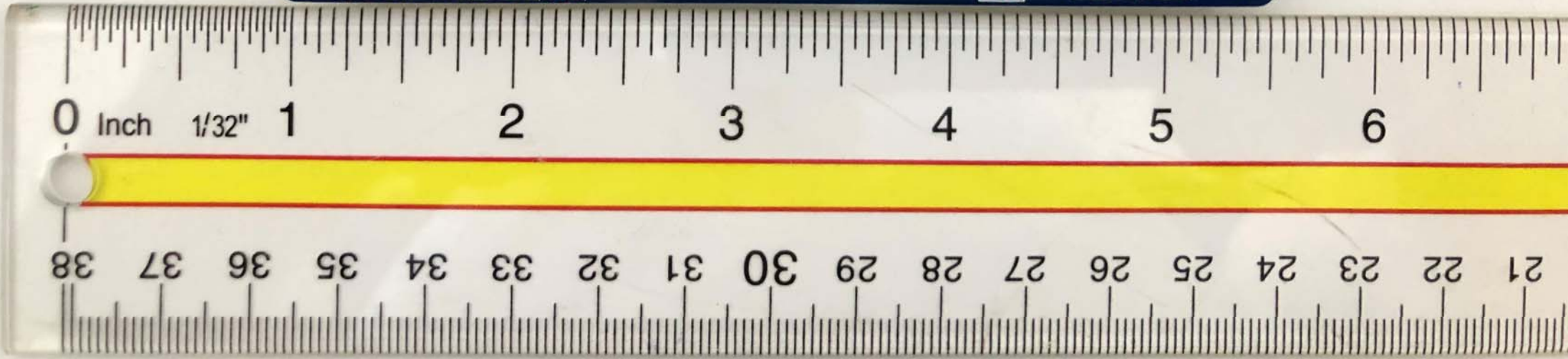


PCBA: 135494-3640 LR-K001L
PCB: 135647 Rev 3
BS 94V-0 1047
ARM BS-H2
QR CODE
E13A059150

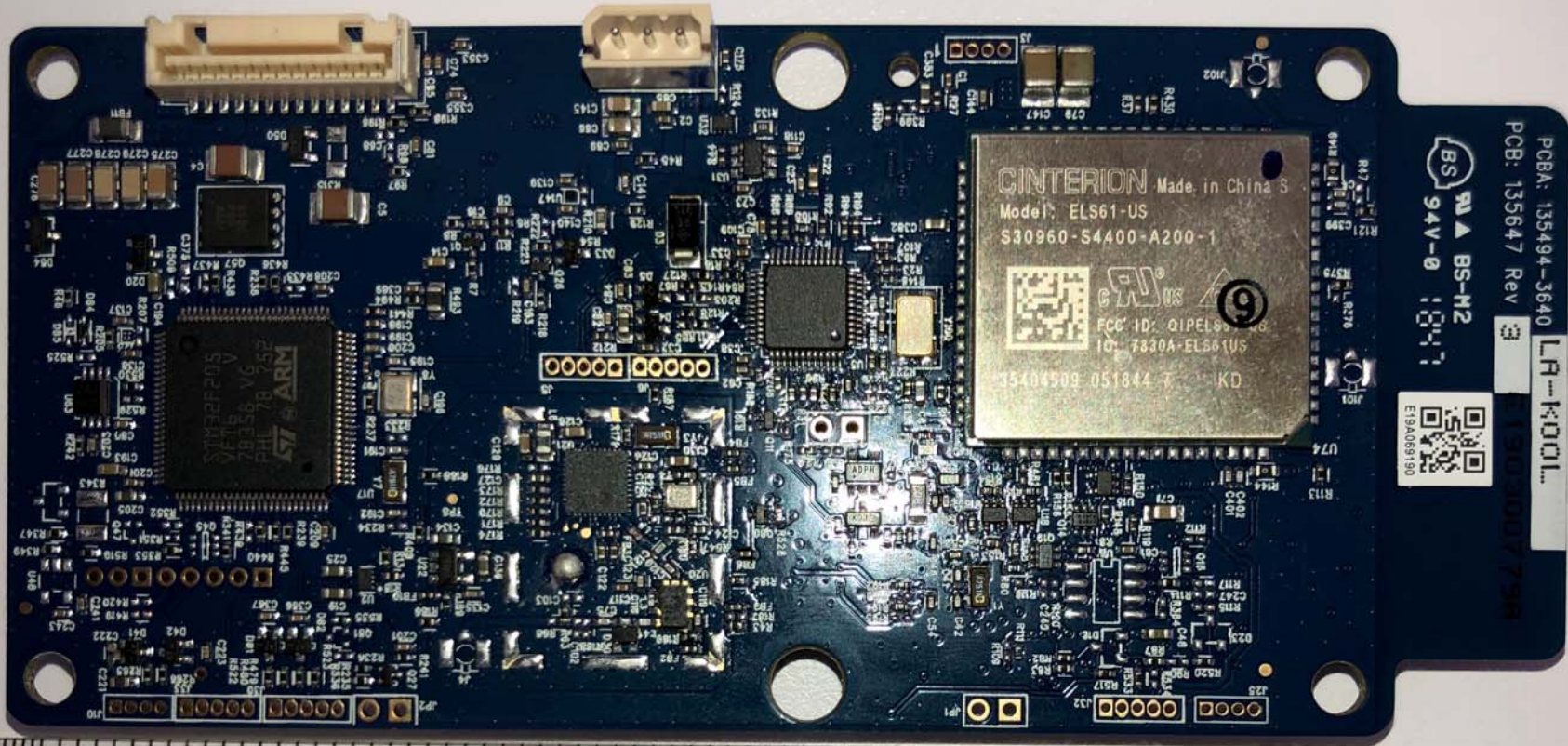




PCBA: 135494-3640 LR-KOOL
PCB: 135647 Rev 3
BS 94V-0 1047
E15A005190



0 1 2 3 4 5 6 7 8 9 10
Inch 1/32"
21 22 23 24 25 26 27 28 29 30 31 32 33 34 35 36 37 38

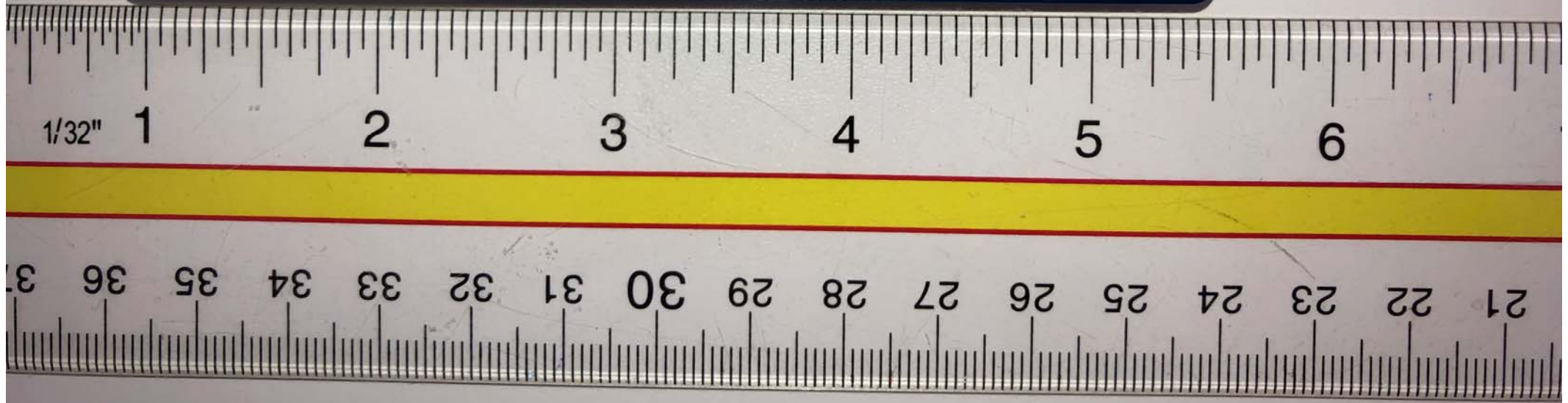


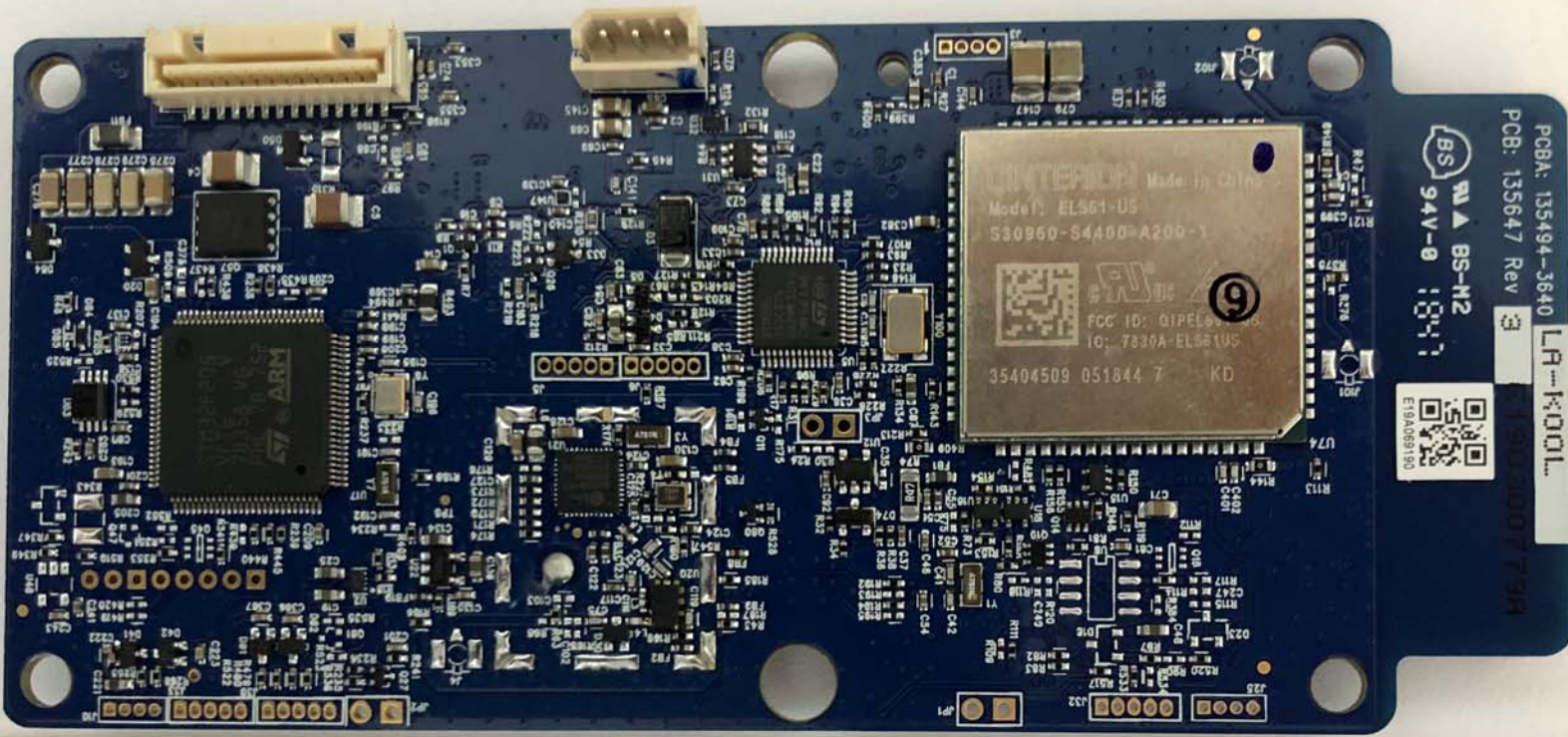
GINTERION Made in China S
 Model: ELS61-US
 S30960-S4400-A200-1

 FCC ID: Q1PEL9
 IC: 7830A-EL561US
 15404509 051844 T KD

PCBA: 135494-3640 LR-K00L
 PCB: 135647 Rev 3

BS
 94V-0
 BS-M2

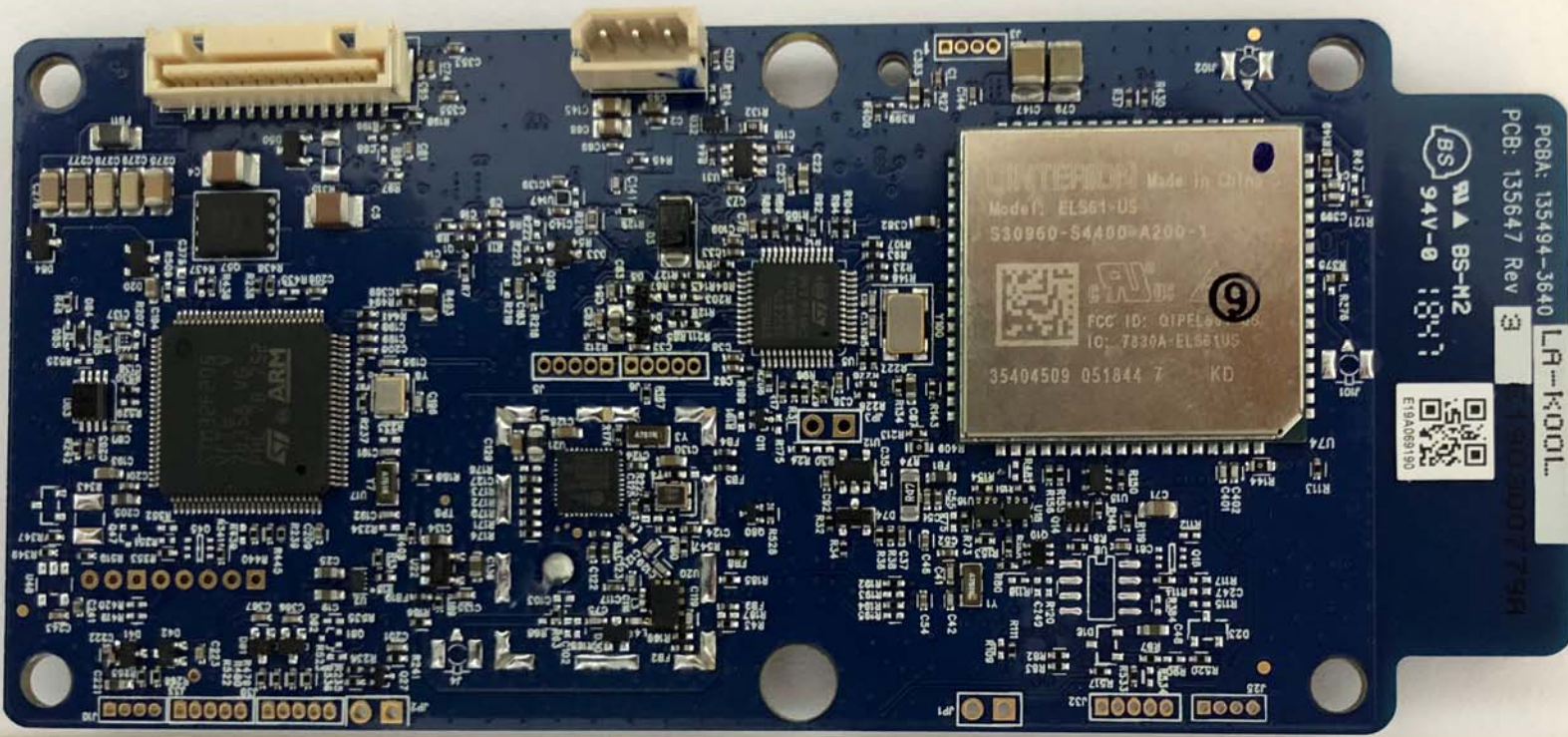


LINTEPIDM Made in China
 Model: EL561-D5
 S30960-S4400-A200-1

 FCC ID: Q1PEL561
 IC: 7830A-EL561US
 35404509 051844 7 KD

PCB: 135494-3640 LR-KOOL
 PCB: 135647 Rev 3
 BS 94V-0 1847



BS
94V-0 1047

PCBA: 135494-3640 LR-KOOL
PCB: 135647 Rev 3

