

CalAmp

TEST REPORT

REPORT NUMBER
190600307TWN-001

ISSUE DATE

Aug. 20, 2019

PAGES
38

DOCUMENT CONTROL NUMBER

© 2019 INTERTEK



Radio Spectrum TEST REPORT

Applicant:	CalAmp 2177 Salk Ave Suite 200 Carlsbad California 92008 United States
Product:	Tracker
Model No.:	LMU3040LVB
FCC ID:	APV-3040LV
Test Method/ Standard:	47 CFR FCC Part 15.249 & ANSI C63.10 2013
Test By:	Intertek Testing Services Taiwan Ltd., Hsinchu Laboratory No. 11, Lane 275, Ko-Nan 1 Street, Chia-Tung Li, Shiang-Shan District, Hsinchu City, Taiwan



Prepared and Checked by:

A handwritten signature in black ink, appearing to read "John Cheng".

John Cheng
Engineer

Approved by:

A handwritten signature in black ink, appearing to read "Durant Wei".

Durant Wei
Engineer

Revision History

Report No.	Issue Date	Revision Summary
190600307TWN-001	Aug. 20, 2019	Original report

TEST REPORT**Table of Contents**

Summary of Tests	4
1. General Information	5
1.1 Identification of the EUT	5
1.2 Antenna description	5
2. Test specifications.....	6
2.1 Test standard	6
2.2 Operation mode	6
2.3 Peripherals equipment	6
3. 20dB Bandwidth test	7
3.1 Operating environment	7
3.2 Test setup & procedure	7
3.3 Measured data of modulated bandwidth test results.....	7
4. Radiated emission test FCC 15.249 (C)	9
4.1 Operating environment	9
4.2 Test setup & procedure	9
4.3 Emission limit	11
4.3.1 Fundamental and harmonics emission limits.....	11
4.3.2 General radiated emission limits.....	12
4.4 Radiated spurious emission test data.....	12
4.4.1 Measurement results: frequency range from 9 kHz to 30 MHz.....	12
4.4.2 Measurement results: frequencies equal to or less than 1 GHz	18
4.4.3 Measurement results: frequency above 1GHz.....	24
4.4.4 Measurement results: Fundamental	28
5. Radiated emission on the band edge FCC 15.249(d)	29
5.1 Operating environment	29
5.2 Radiated emission on the band edge test data	29
6. AC Power Line Conducted Emission	32
6.1 Measuring instrument setting.....	32
6.2 Test Procedure	32
6.3 Test Diagram	32
6.4 Limit.....	33
6.5 Operating Environment Condition	33
6.6 Test Results	34
Appendix A: Test equipment list.....	36
Appendix B: Measurement Uncertainty.....	38

Summary of Tests

Test	Reference	Results
20dB Bandwidth	15.215(c)	Pass
Radiated Emission test	15.249(c), 15.209	Pass
Emission on the Band Edge	15.249(d)	Pass
Conducted Emission of AC Power	15.207	Pass
Antenna Requirement	15.203	Pass

1. General Information**1.1 Identification of the EUT**

Product:	Tracker
Model No.:	LMU3040LVB
Operating Frequency:	2402 MHz ~ 2480 MHz
Channel Number:	2402+2k MHz, k = 0~39
Access scheme:	GFSK
Rated Power:	12/24 VDC
Power Cord:	N/A
Sample receiving date:	Jun. 24, 2019
Sample condition:	Workable
Test Date(s):	Jun. 26, 2019 ~ Aug. 06, 2019

1.2 Antenna description

Antenna Gain : 0.5 dBi

Antenna Type : PIFA antenna

Connector Type : Pogo Pin

2. Test specifications

2.1 Test standard

The EUT was performed according to the procedures in FCC Part 15 Subpart C Paragraph 15.249 for non-spread spectrum devices.

The test of radiated measurements according to FCC Part15 Section 15.33(a) had been conducted and the field strength of this frequency band were all meet limit requirement, thus we evaluate the EUT pass the specified test.

2.2 Operation mode

TX mode: EUT use 「cmd.exe」 entering test mode , and write down different cmd to change different channel.

The signal is maximized through rotation and placement in the three orthogonal axes.



After verifying three axes, we found the maximum electromagnetic field was occurred at X axis. The final test data was executed under this configuration.

2.3 Peripherals equipment

Peripherals	Brand	Model No.	Serial No.	Data cable
Notebook PC	HP	HP Probook 440 G3	CEL133	Mini USB 0.8 meter × 1

3. 20dB Bandwidth test

3.1 Operating environment

Temperature:	26	°C
Relative Humidity:	67	%

3.2 Test setup & procedure

Step 1: The 20dB bandwidth was measured using a 50 ohm spectrum analyzer

Step 2: The span range for the SA display shall be between two times and five times the OBW.

Step 3: The nominal IF filter bandwidth (3 dB RBW) should be approximately 1 % to 5 % of the OBW, unless otherwise specified, depending on the applicable requirement.

Step 4: The test was performed at 1 channel. The maximum 20dB modulation bandwidth is in the following Table.

3.3 Measured data of modulated bandwidth test results

Single TX

Mode	Frequency (MHz)	20dB Occupied Bandwidth (MHz)
BLE	2402	1.097
	2440	1.100
	2480	1.093

Please see the plot below.

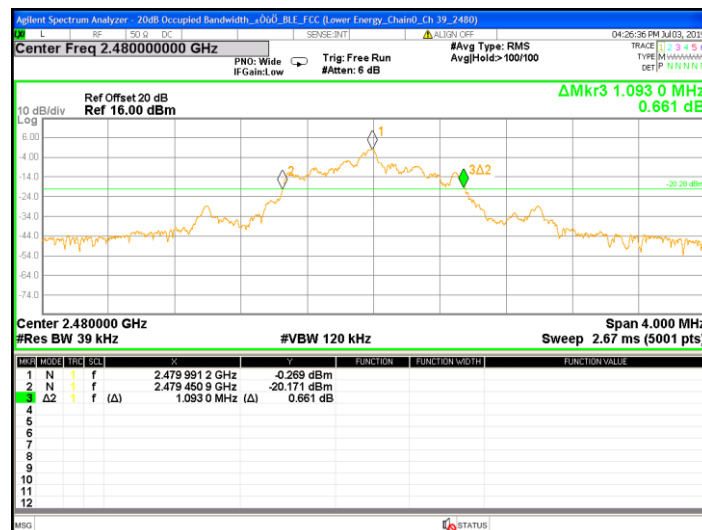
20dB Bandwidth @ BLE_Channel 0



20dB Bandwidth @ BLE_Channel 19



20dB Bandwidth @ BLE_Channel 39



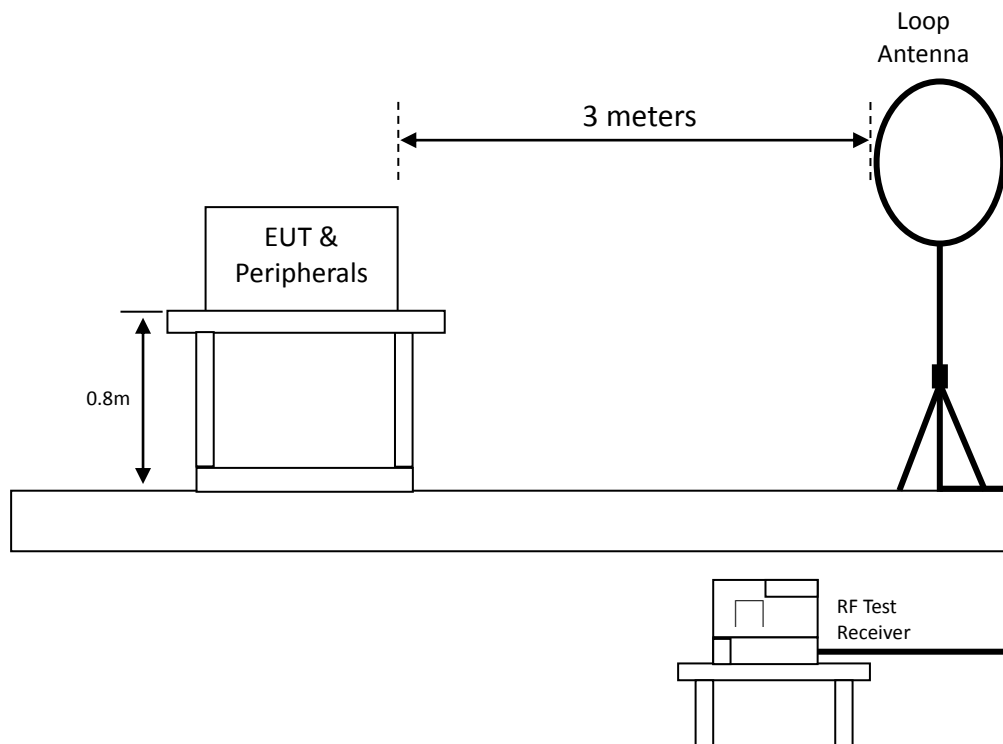
4. Radiated emission test FCC 15.249 (C)

4.1 Operating environment

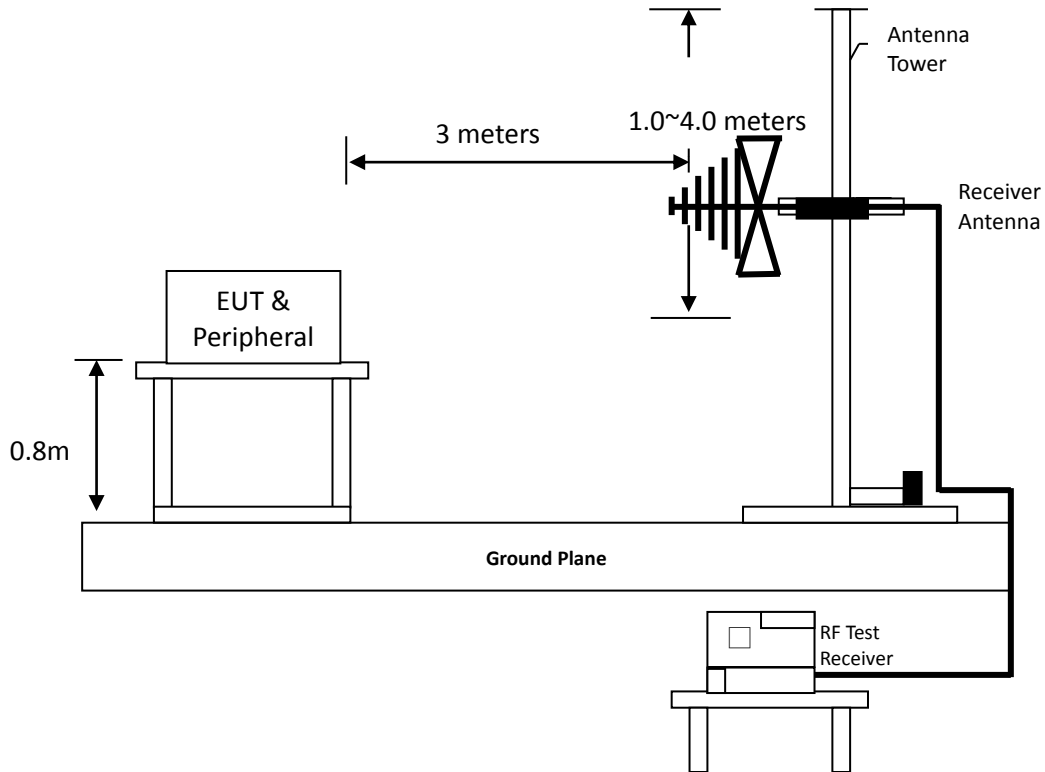
Temperature:	27	°C
Relative Humidity:	68	%

4.2 Test setup & procedure

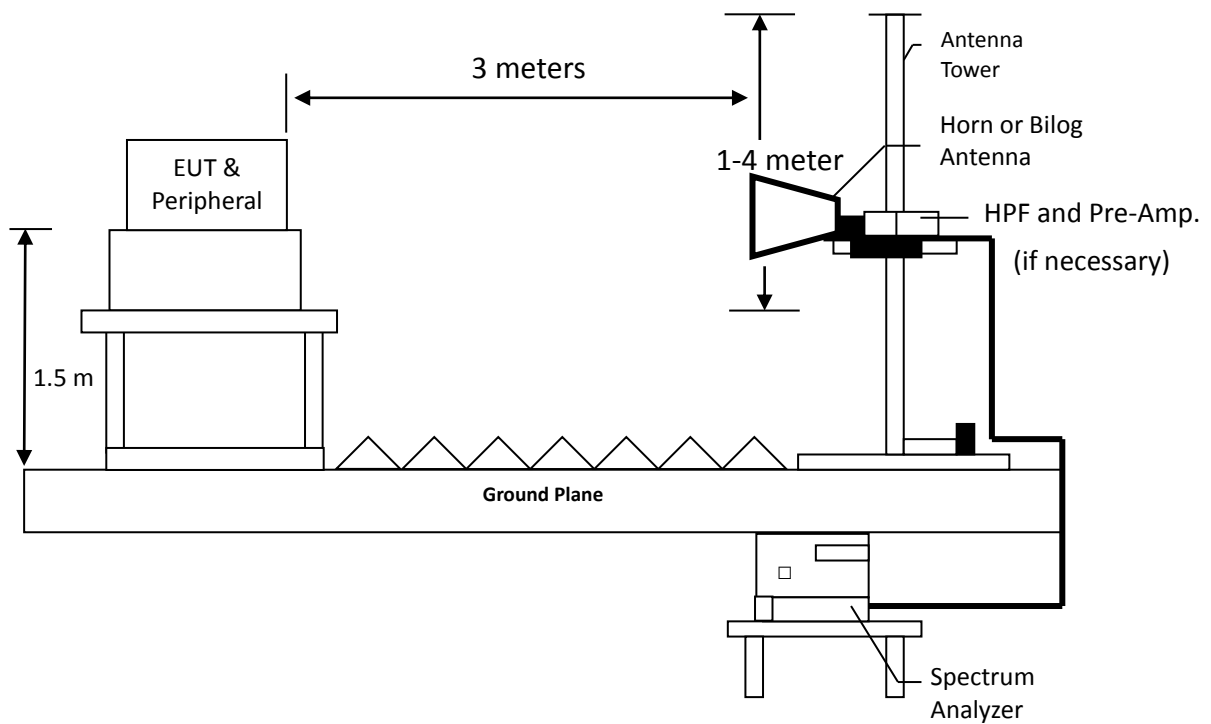
Radiated emission from 9kHz to 30MHz uses Loop Antenna:



Radiated emission below 1GHz using Bilog Antenna



Radiated emission above 1GHz using Horn Antenna



TEST REPORT

Radiated emissions were investigated cover the frequency range from 30MHz to 1000MHz using a receiver RBW of 120kHz record QP reading, and the frequency over 1GHz using a spectrum analyzer RBW of 1MHz and 10Hz VBW record Average reading. (15.209 paragraph), the Peak reading (1 MHz RBW/ 3 MHz VBW) recorded also on the report.

The EUT for testing is arranged on a turntable. If some peripherals apply to the EUT, the peripherals will be connected to EUT and the whole system. During the test, all cables were arranged to produce worst-case emissions. The signal is maximized through rotation. The height of antenna and polarization is changing constantly for exploring for maximum signal level. The height of antenna can be up to 4 meters and down to 1 meter.

The measurement for radiated emission will be done at the distance of three meters unless the signal level is too low to measure at that distance. In the case of the reading under noise floor, a pre-amplifier is used and/or the test is conducted at a closer distance. And then all readings are extrapolated back to the equivalent three meter reading using inverse scaling with distance.

4.3 Emission limit**4.3.1 Fundamental and harmonics emission limits**

Frequency (MHz)	Field Strength of Fundamental		Field Strength of Harmonics	
	(mV/m@3m)	(dBuV/m@3m)	(uV/m@3m)	(dBuV/m@3m)
2400-2483.5	50	94	500	54

TEST REPORT

4.3.2 General radiated emission limits

Emissions radiated outside of the specified frequency bands, except for harmonics, shall be attenuated by at least 50dB below the level of the fundamental or to the general radiated emission limits in paragraph 15.209, whichever is the lesser attenuation.

Frequency MHz	15.209 Limits (dBµV/m@3m)
30-88	40
88-216	43.5
216-960	46
Above 960	54

Remark:

1. In the above table, the tighter limit applies at the band edges.
2. Distance refers to the distance in meters between the measuring instrument antenna and the closed point of any part of the device or system

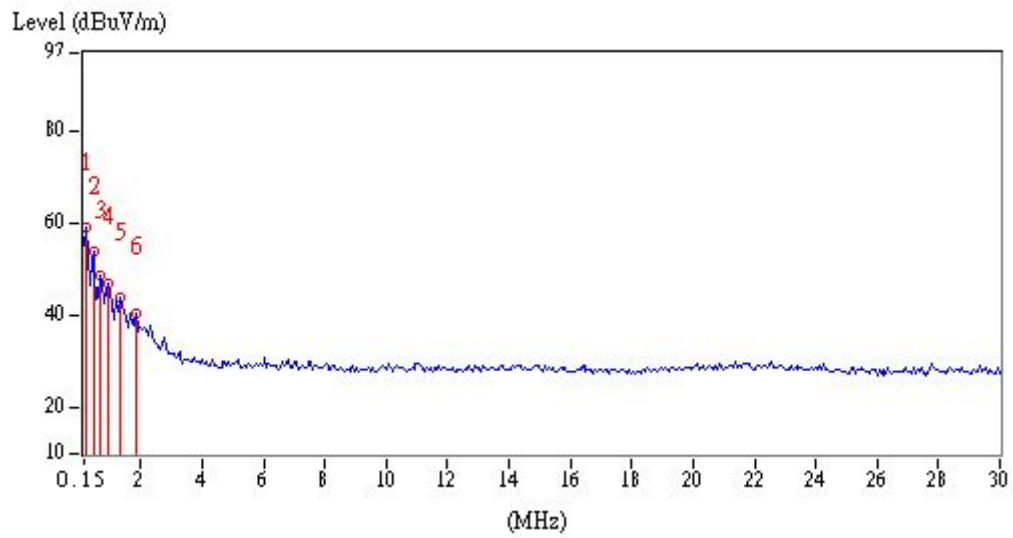
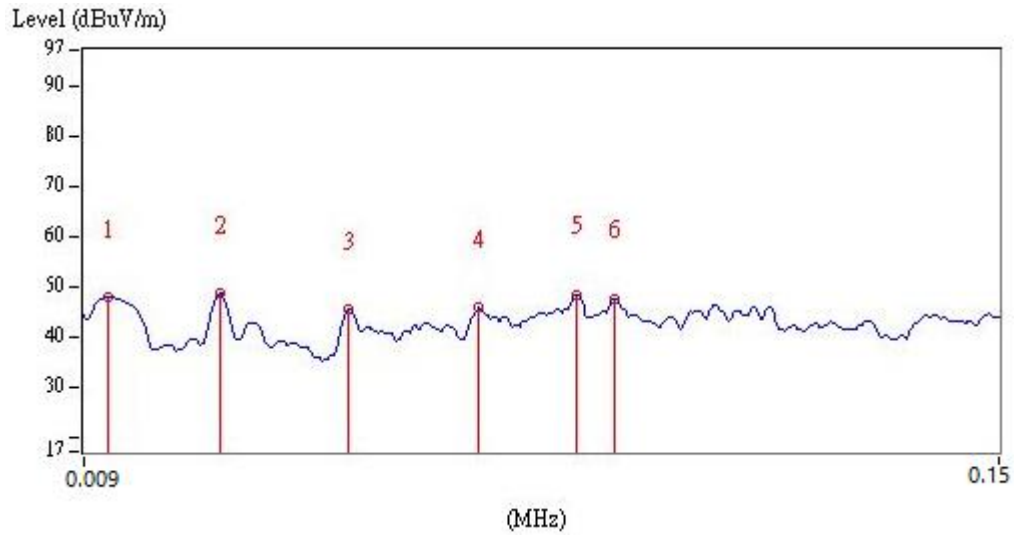
4.4 Radiated spurious emission test data

4.4.1 Measurement results: frequency range from 9 kHz to 30 MHz

The test was performed continuously transmitting mode. The worst case occurred at TX Channel 19

EUT: LMU3040LVB

Polarity (circle)	Frequency (MHz)	Detection value	Factor (dB/m)	Reading (dBµV)	Value (dBµV/m)	Limit @ 3m (dBµV/m)	Tolerance (dB)
Plane	0.01	PK	18.54	29.20	47.74	127.60	-79.86
Plane	0.03	PK	19.06	29.44	48.49	118.06	-69.57
Plane	0.05	PK	18.67	26.64	45.30	113.62	-68.32
Plane	0.07	PK	18.50	27.16	45.66	110.70	-65.04
Plane	0.08	PK	18.38	29.85	48.23	109.54	-61.31
Plane	0.09	PK	18.33	29.12	47.45	108.52	-61.07
Plane	0.21	PK	18.29	40.79	59.08	101.16	-42.08
Plane	0.45	PK	18.37	35.38	53.75	94.54	-40.79
Plane	0.69	QP	18.50	30.03	48.53	70.83	-22.30
Plane	0.93	QP	18.65	28.40	47.05	68.23	-21.18
Plane	1.34	QP	18.73	25.04	43.78	65.06	-21.28
Plane	1.82	QP	18.80	21.77	40.56	69.54	-28.98

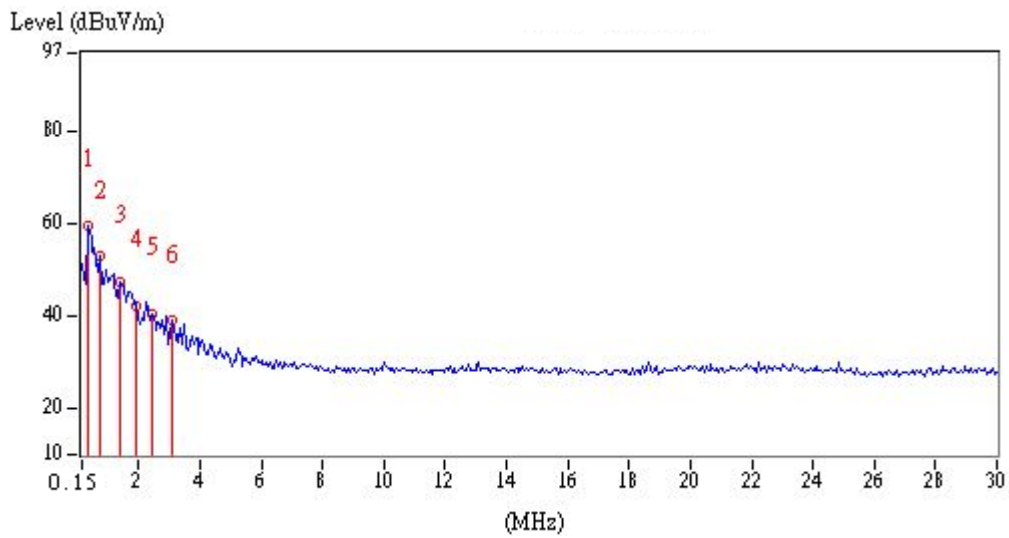
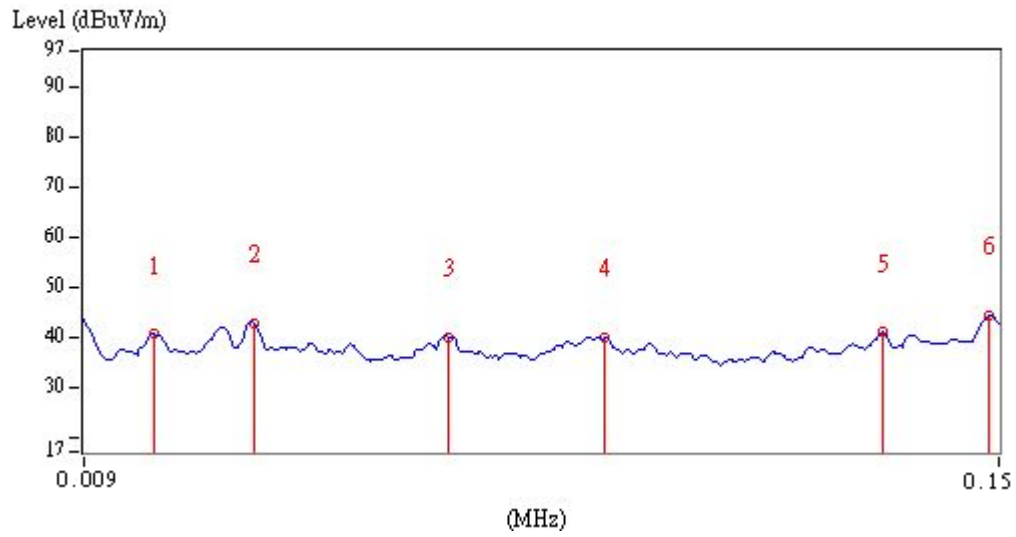


TEST REPORT

The test was performed on EUT under Bluetooth and LTE Band 4 were transmitting simultaneously mode.

EUT: LMU3040LVB

Polarity (circle)	Frequency (MHz)	Detection value	Factor (dB/m)	Reading (dBµV)	Value (dBµV/m)	Limit @ 3m (dBµV/m)	Tolerance (dB)
Plane	0.02	PK	18.75	21.74	40.49	121.58	-81.09
Plane	0.04	PK	18.96	23.82	42.78	115.56	-72.78
Plane	0.07	PK	18.54	21.44	39.98	110.70	-70.72
Plane	0.09	PK	18.35	21.55	39.90	108.52	-68.62
Plane	0.13	PK	18.27	22.64	40.91	105.33	-64.42
Plane	0.15	PK	18.27	25.96	44.23	104.08	-59.85
Plane	0.33	PK	18.33	41.44	59.77	97.23	-37.46
Plane	0.75	PK	18.54	34.43	52.97	70.10	-17.13
Plane	1.40	QP	18.74	28.71	47.45	64.68	-17.23
Plane	1.88	QP	18.80	23.41	42.21	69.54	-27.33
Plane	2.42	QP	18.87	21.64	40.51	69.54	-29.03
Plane	3.08	QP	18.97	20.14	39.11	69.54	-30.43

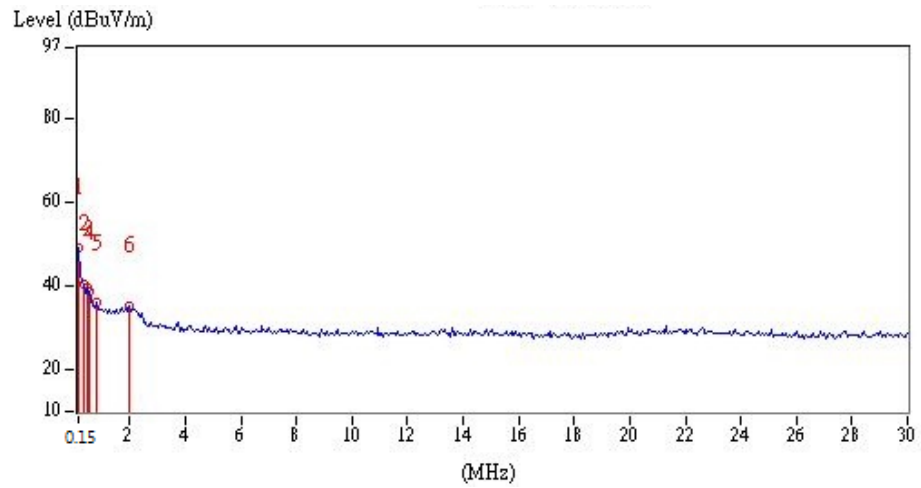
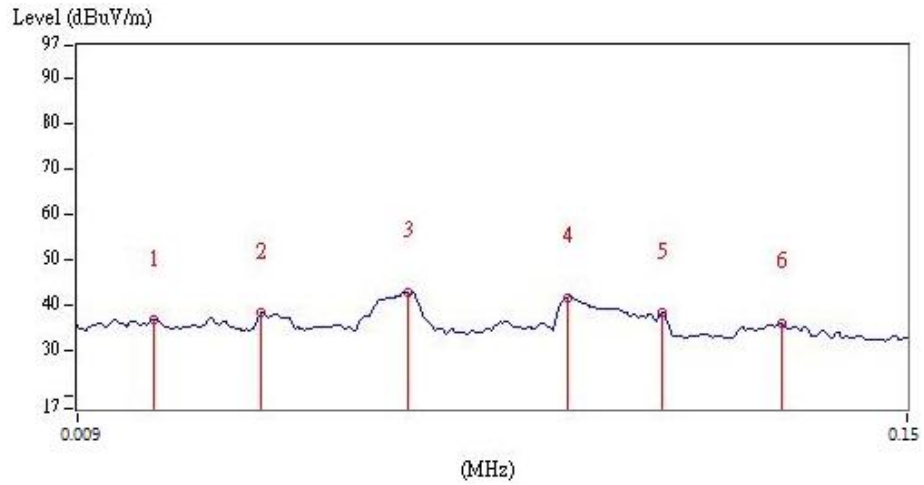


TEST REPORT

The test was performed on EUT under Bluetooth and LTE Band 13 were transmitting simultaneously mode.

EUT: LMU3040LVB

Polarity (circle)	Frequency (MHz)	Detection value	Factor (dB/m)	Reading (dBμV)	Value (dBμV/m)	Limit @ 3m (dBμV/m)	Tolerance (dB)
Plane	0.02	PK	18.82	17.62	36.44	121.58	-85.14
Plane	0.04	PK	18.85	19.19	38.04	115.56	-77.52
Plane	0.07	PK	18.54	24.10	42.64	110.70	-68.06
Plane	0.09	PK	18.32	23.09	41.41	108.52	-67.11
Plane	0.11	PK	18.26	19.88	38.14	106.78	-68.64
Plane	0.13	PK	18.27	17.63	35.90	105.33	-69.43
Plane	0.15	PK	18.27	30.95	49.22	104.08	-54.86
Plane	0.33	PK	18.33	22.18	40.51	97.23	-56.72
Plane	0.45	PK	18.37	21.04	39.41	94.54	-55.13
Plane	0.57	QP	18.43	20.06	38.49	72.49	-34.00
Plane	0.81	QP	18.57	17.35	35.92	69.43	-33.51
Plane	2.00	QP	18.82	16.55	35.37	69.54	-34.17



TEST REPORT

4.4.2 Measurement results: frequencies equal to or less than 1 GHz

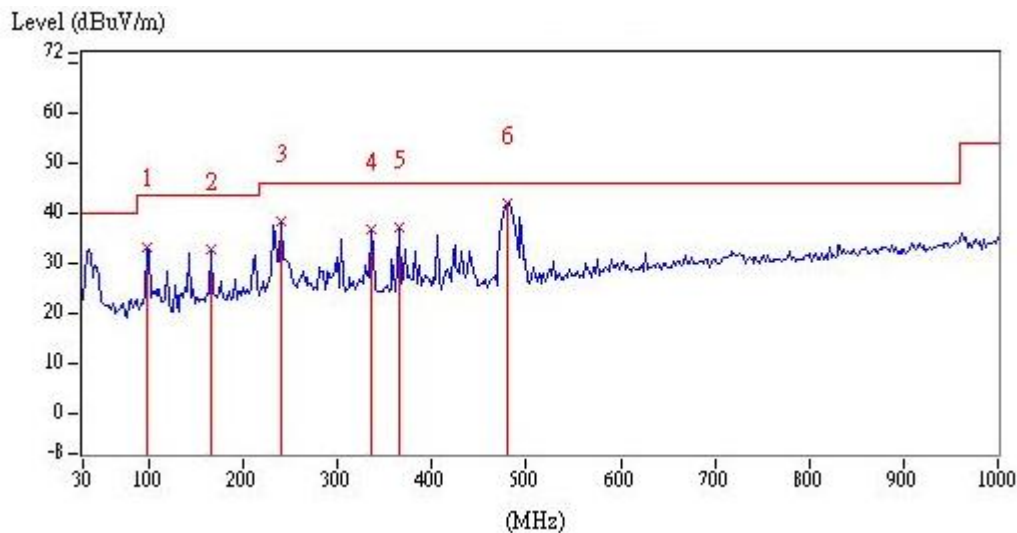
The test was performed continuously transmitting mode. The worst case occurred at TX Channel 19

EUT: LMU3040LVB

Worst case: TX Channel 19

Ant. Pol. (H/V)	Frequency (MHz)	Spectrum Analyzer Detector	Correction Factor (dB/m)	Reading (dBμV)	Corrected Reading (dBμV/m)	Limit @ 3 m (dBμV/m)	Margin (dB)
Vertical	97.90	QP	15.00	18.23	33.23	43.50	-10.27
Vertical	165.80	QP	20.18	12.51	32.70	43.50	-10.80
Vertical	239.52	QP	20.20	18.18	38.38	46.00	-7.62
Vertical	336.52	QP	22.31	14.34	36.64	46.00	-9.36
Vertical	365.62	QP	23.02	13.98	37.00	46.00	-9.00
Vertical	480.08	QP	25.75	16.17	41.92	46.00	-4.08

Remark: Corr. Factor = Antenna Factor + Cable Loss

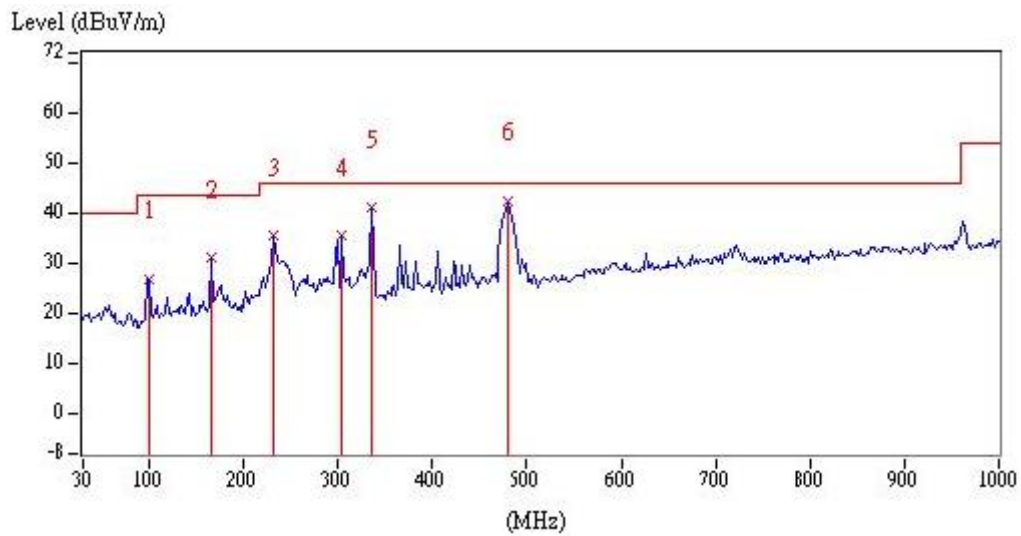


TEST REPORT

EUT: LMU3040LVB
 Worst case: TX Channel 19

Ant. Pol. (H/V)	Frequency (MHz)	Spectrum Analyzer Detector	Correction Factor (dB/m)	Reading (dBμV)	Corrected Reading (dBμV/m)	Limit @ 3 m (dBμV/m)	Margin (dB)
Horizontal	99.84	QP	15.15	11.66	26.81	43.50	-16.69
Horizontal	165.80	QP	20.18	10.94	31.12	43.50	-12.38
Horizontal	231.76	QP	19.55	15.93	35.48	46.00	-10.52
Horizontal	303.54	QP	21.53	14.05	35.58	46.00	-10.42
Horizontal	336.52	QP	22.31	18.79	41.10	46.00	-4.90
Horizontal	480.08	QP	25.75	16.69	42.44	46.00	-3.56

Remark: Corr. Factor = Antenna Factor + Cable Loss



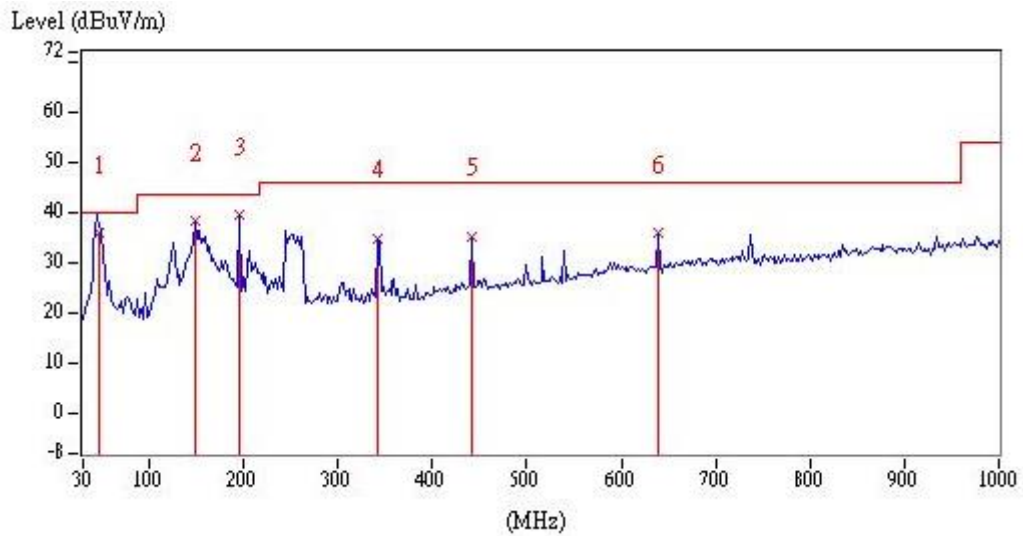
TEST REPORT

The test was performed on EUT under Bluetooth and LTE Band 4 were transmitting simultaneously mode.

EUT: LMU3040LVB

Ant. Pol. (H/V)	Frequency (MHz)	Spectrum Analyzer Detector	Correction Factor (dB/m)	Reading (dBμV)	Corrected Reading (dBμV/m)	Limit @ 3 m (dBμV/m)	Margin (dB)
Vertical	46.50	QP	20.41	15.59	36.00	40.00	-4.00
Vertical	148.34	QP	20.15	18.12	38.27	43.50	-5.23
Vertical	194.90	QP	17.83	21.64	39.47	43.50	-4.03
Vertical	342.34	QP	22.44	12.48	34.92	46.00	-11.08
Vertical	441.28	QP	25.04	10.23	35.27	46.00	-10.73
Vertical	639.16	QP	28.83	7.03	35.86	46.00	-10.14

Remark: Corr. Factor = Antenna Factor + Cable Loss

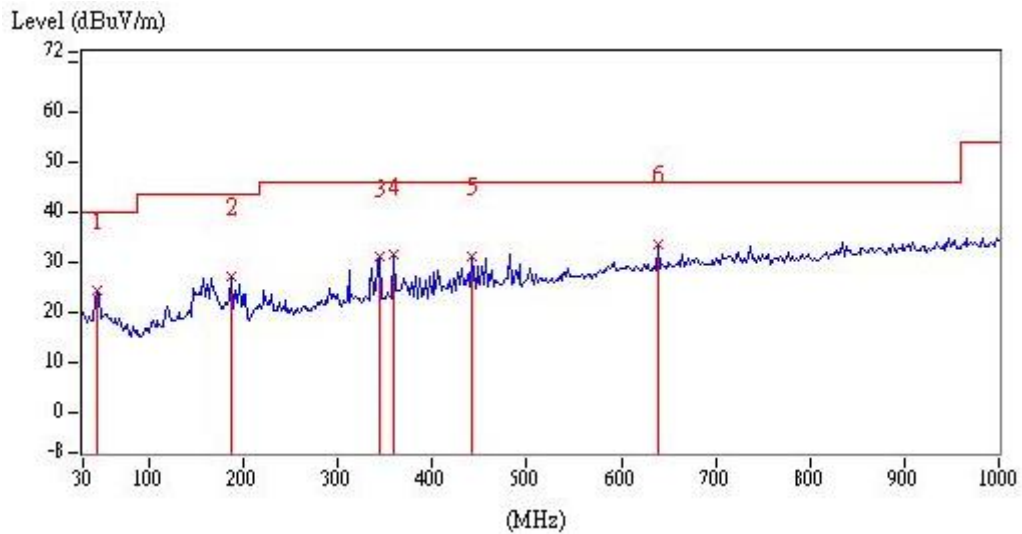


TEST REPORT

EUT: LMU3040LVB

Ant. Pol. (H/V)	Frequency (MHz)	Spectrum Analyzer Detector	Correction Factor (dB/m)	Reading (dBμV)	Corrected Reading (dBμV/m)	Limit @ 3 m (dBμV/m)	Margin (dB)
Horizontal	45.52	QP	20.36	4.23	24.59	40.00	-15.41
Horizontal	187.14	QP	18.22	9.06	27.28	43.50	-16.22
Horizontal	344.28	QP	22.49	8.57	31.06	46.00	-14.94
Horizontal	359.80	QP	22.87	8.70	31.57	46.00	-14.43
Horizontal	441.28	QP	25.04	6.28	31.32	46.00	-14.68
Horizontal	639.16	QP	28.83	4.81	33.64	46.00	-12.36

Remark: Corr. Factor = Antenna Factor + Cable Loss



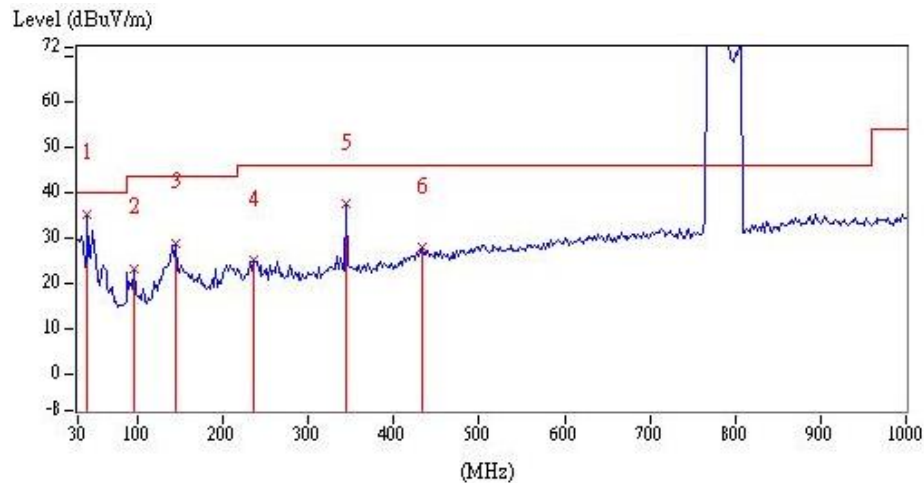
TEST REPORT

The test was performed on EUT under Bluetooth and LTE Band 13 were transmitting simultaneously mode.

EUT: LMU3040LVB

Ant. Pol. (H/V)	Frequency (MHz)	Spectrum Analyzer Detector	Correction Factor (dB/m)	Reading (dB μ V)	Corrected Reading (dB μ V/m)	Limit @ 3 m (dB μ V/m)	Margin (dB)
Vertical	41.64	QP	20.05	15.31	35.36	40.00	-4.64
Vertical	95.96	QP	14.85	8.53	23.38	43.50	-20.12
Vertical	144.46	QP	19.98	8.87	28.85	43.50	-14.65
Vertical	235.64	QP	19.88	5.14	25.02	46.00	-20.98
Vertical	344.28	QP	22.49	14.93	37.42	46.00	-8.58
Vertical	433.52	QP	24.83	3.17	28.00	46.00	-18.00

Remark: Corr. Factor = Antenna Factor + Cable Loss

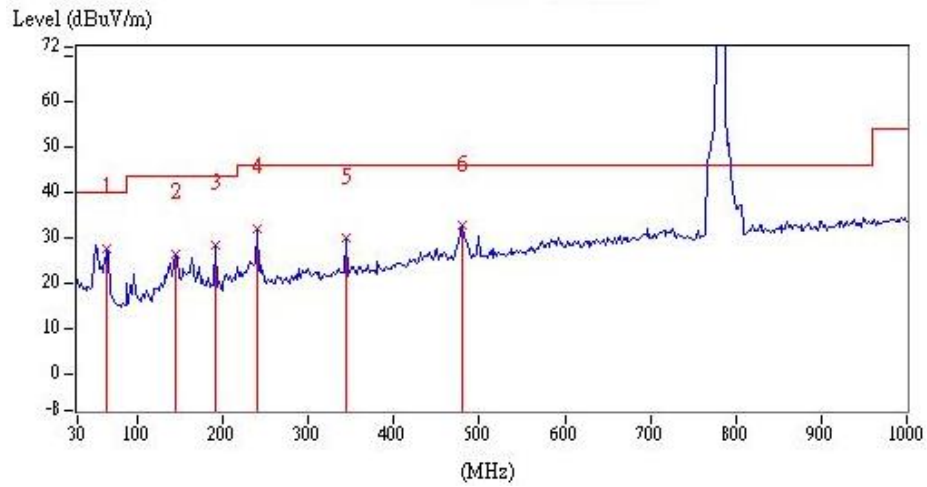


TEST REPORT

EUT: LMU3040LVB

Ant. Pol. (H/V)	Frequency (MHz)	Spectrum Analyzer Detector	Correction Factor (dB/m)	Reading (dB μ V)	Corrected Reading (dB μ V/m)	Limit @ 3 m (dB μ V/m)	Margin (dB)
Horizontal	64.92	QP	19.18	8.54	27.72	40.00	-12.28
Horizontal	144.46	QP	19.98	6.57	26.55	43.50	-16.95
Horizontal	191.02	QP	17.92	10.52	28.44	43.50	-15.06
Horizontal	239.52	QP	20.20	11.94	32.14	46.00	-13.86
Horizontal	344.28	QP	22.49	7.44	29.93	46.00	-16.07
Horizontal	480.08	QP	25.75	6.86	32.61	46.00	-13.39

Remark: Corr. Factor = Antenna Factor + Cable Loss



TEST REPORT

4.4.3 Measurement results: frequency above 1GHz

EUT: LMU3040LVB

Mode	Frequency (MHz)	Spectrum Analyzer Detector	Ant. Pol. (H/V)	Correction Factor (dB/m)	Reading (dBμV)	Corrected Reading (dBμV/m)	Limit @ 3 m (dBμV/m)	Margin (dB)
BLE_Ch0	4804	PK	V	8.30	39.78	48.08	74.00	-25.92
	4804	PK	H	8.30	35.99	44.30	74.00	-29.70
BLE_Ch19	4880	PK	V	8.65	37.91	46.56	74.00	-27.44
	4880	PK	H	8.65	36.06	44.71	74.00	-29.29
BLE_Ch39	4960	PK	V	9.02	36.85	45.86	74.00	-28.14
	4960	PK	H	9.02	36.59	45.61	74.00	-28.39

Remark: Correction Factor = Antenna Factor + Cable Loss + High Pass Filter Loss - Pre_Amplifier Gain

Mode	Frequency (MHz)	Spectrum Analyzer Detector	Ant. Pol. (H/V)	Correction Factor (dB/m)	Reading (dBμV)	Corrected Reading (dBμV/m)	Limit @ 3 m (dBμV/m)	Margin (dB)
Co-location (LTE Band 4 +BLE)	4880	PK	V	8.65	37.91	46.56	74.00	-27.44
	4880	PK	H	8.65	36.06	44.71	74.00	-29.29
	3490	PK	V	3.85	37.46	41.31	74.00	-32.69
	3490	PK	H	3.84	37.10	40.94	74.00	-33.06

Remark: Correction Factor = Antenna Factor + Cable Loss + High Pass Filter Loss - Pre_Amplifier Gain

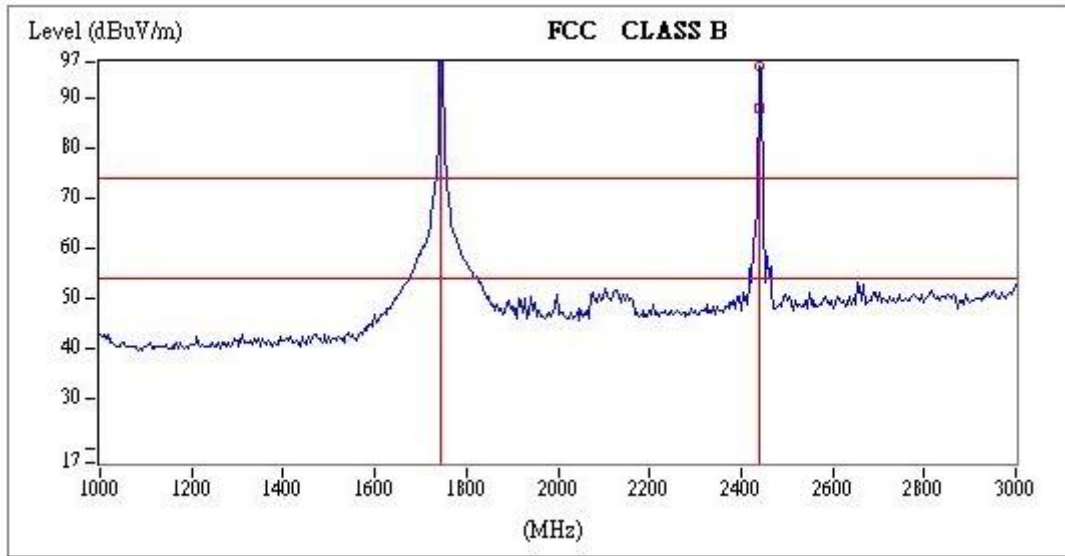
Mode	Frequency (MHz)	Spectrum Analyzer Detector	Ant. Pol. (H/V)	Correction Factor (dB/m)	Reading (dBμV)	Corrected Reading (dBμV/m)	Limit @ 3 m (dBμV/m)	Margin (dB)
Co-location (LTE Band 13 +BLE)	1564	PK	V	30.63	14.69	45.32	74.00	-28.68
	3910	PK	V	5.48	40.98	46.46	74.00	-27.54
	4880	PK	V	8.65	36.09	44.74	74.00	-29.26
	5474	PK	V	9.51	35.96	45.47	74.00	-28.53
	7038	PK	V	15.03	33.74	48.77	74.00	-25.23
	1564	PK	H	30.63	11.30	41.93	74.00	-32.07
	3910	PK	H	5.48	36.54	42.02	74.00	-31.98
	4880	PK	H	8.65	36.05	44.70	74.00	-29.30
	5474	PK	H	9.51	35.99	45.50	74.00	-28.50
	7038	PK	H	15.03	34.64	49.67	74.00	-24.33

Remark: Correction Factor = Antenna Factor + Cable Loss + High Pass Filter Loss - Pre_Amplifier Gain

Temperature (C): 27.0

Humidity (%): 67

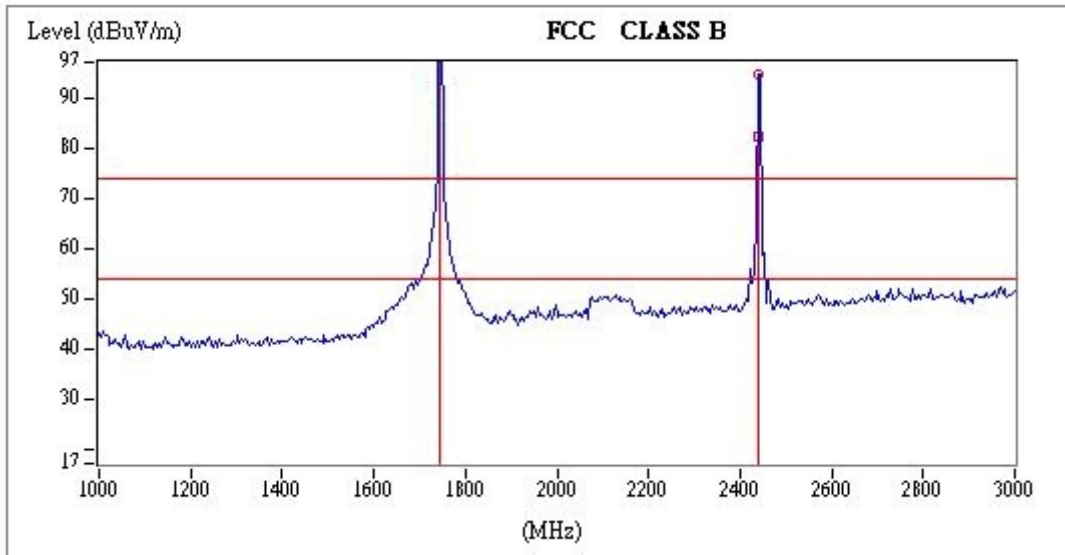
Polarity: **Vertical**



Temperature (C): 27.0

Humidity (%): 67

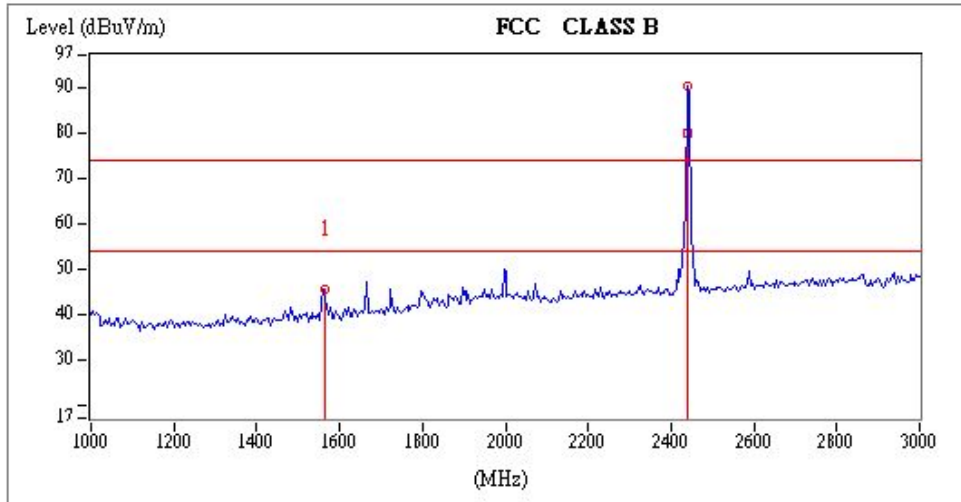
Polarity: **Horizontal**



Temperature (C): 28.0

Humidity (%): 68

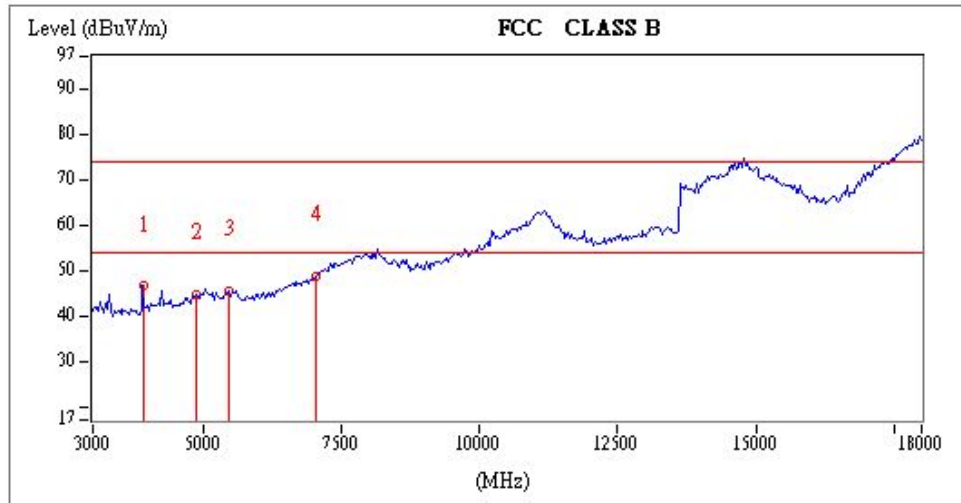
Polarity: **Vertical**



Temperature (C): 28.0

Humidity (%): 68

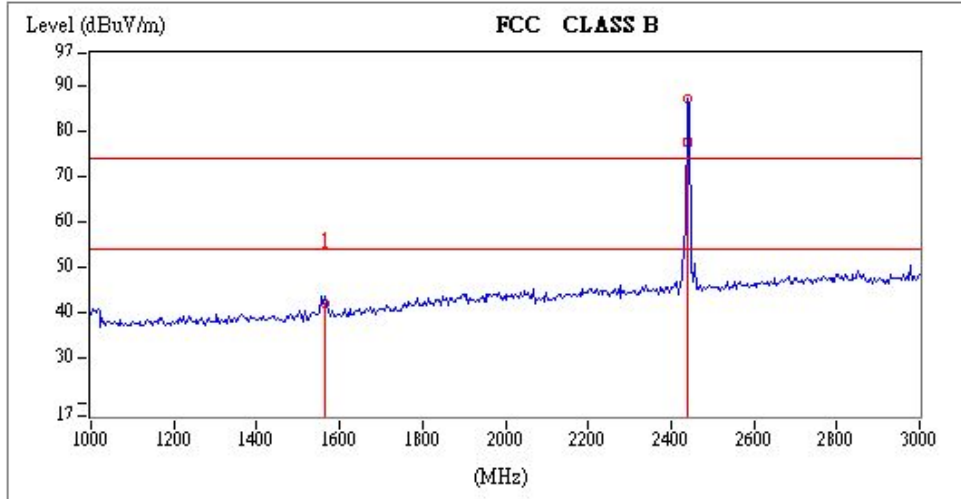
Polarity: **Vertical**



Temperature (C): 28.0

Humidity (%): 68

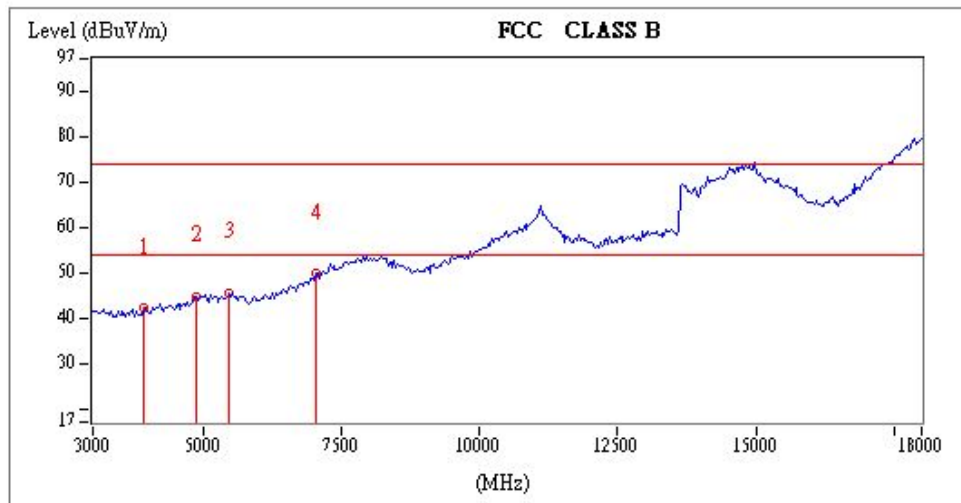
Polarity: **Horizontal**



Temperature (C): 28.0

Humidity (%): 68

Polarity: **Horizontal**



TEST REPORT

4.4.4 Measurement results: Fundamental

EUT: LMU3040LVB

Mode	Frequency (MHz)	Spectrum Analyzer Detector	Ant. Pol. (H/V)	Correction Factor (dB/m)	Reading (dBμV)	Corrected Reading (dBμV/m)	Limit @ 3 m (dBμV/m)	Margin (dB)
BLE_Ch0	2402	PK	V	34.51	53.16	87.67	114.00	-26.33
	2402	AV	V	34.51	35.16	69.67	94.00	-24.33
	2402	PK	H	34.51	50.70	85.21	114.00	-28.79
	2402	AV	H	34.51	33.02	67.53	94.00	-26.47
BLE_Ch19	2440	PK	V	34.60	53.20	87.80	114.00	-26.20
	2440	AV	V	34.60	35.51	70.11	94.00	-23.89
	2440	PK	H	34.60	51.15	85.75	114.00	-28.25
	2440	AV	H	34.60	33.40	68.00	94.00	-26.00
BLE_Ch39	2480	PK	V	34.70	51.90	86.60	114.00	-27.40
	2480	AV	V	34.70	34.11	68.81	94.00	-25.19
	2480	PK	H	34.70	52.09	86.79	114.00	-27.21
	2480	AV	H	34.70	33.80	68.50	94.00	-25.50

Remark: Correction Factor = Antenna Factor + Cable Loss

5. Radiated emission on the band edge FCC 15.249(d)

5.1 Operating environment

Temperature:	27	°C
Relative Humidity:	68	%

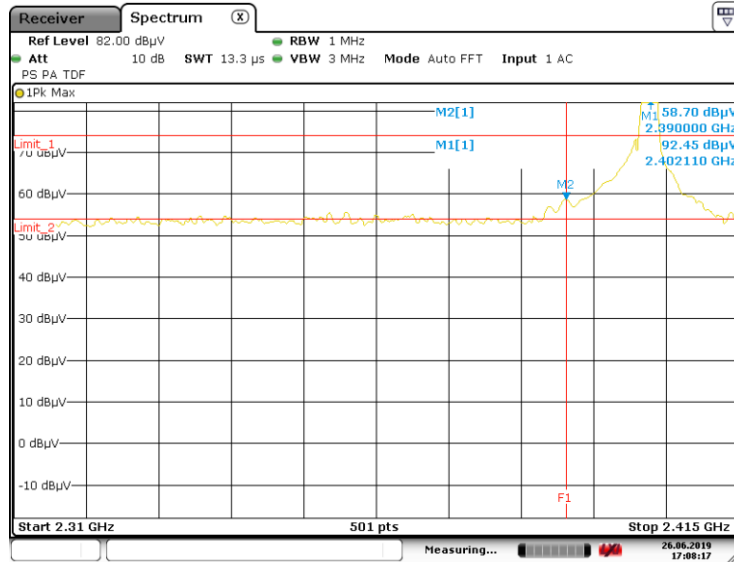
5.2 Radiated emission on the band edge test data

Emissions radiated outside of the specified frequency bands, except for harmonics, shall be attenuated by at least 50 dB below the level of the fundamental or to the general radiated emission limits in §15.209, whichever is the lesser attenuation.

Mode	Frequency (MHz)	Spectrum Analyzer Detector	Ant. Pol. (H/V)	Correction Factor (dB/m)	Reading (dBμV)	Corrected Reading (dBμV/m)	Limit @ 3 m (dBμV/m)	Margin (dB)	Restricted band (MHz)
BLE	2390.00	PK	V	34.48	24.22	58.70	74	-15.30	2310~2390
	2379.73	AV	V	34.46	7.25	41.71	54	-12.29	
	2483.50	PK	V	34.71	30.94	65.65	74	-8.35	2483.5~2500
	2488.69	AV	V	34.72	7.44	42.16	54	-11.84	

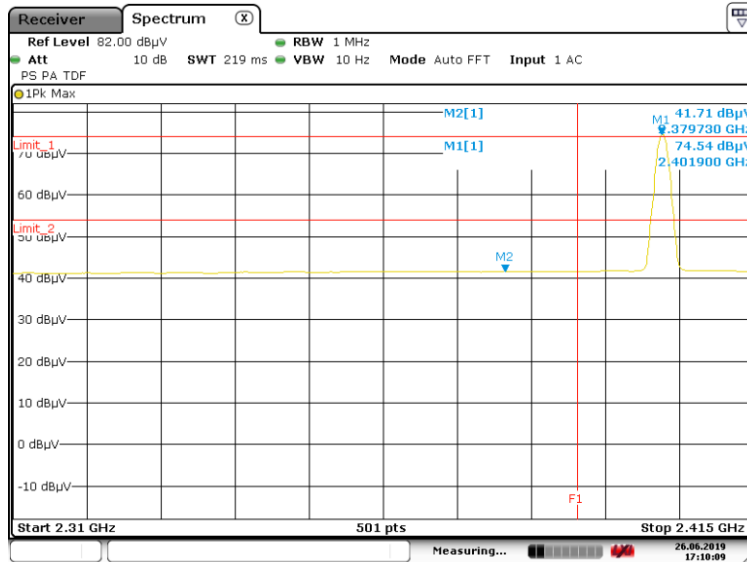
Remark: Correction Factor = Antenna Factor + Cable Loss

Bandedge @ mode BLE Ch0 Peak



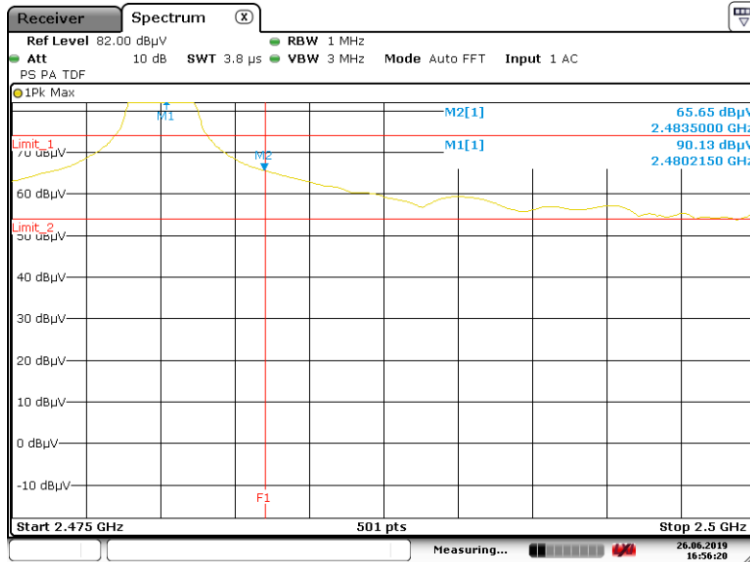
Date: 26.JUN.2019 17:08:17

Bandedge @ mode BLE Ch0 Average



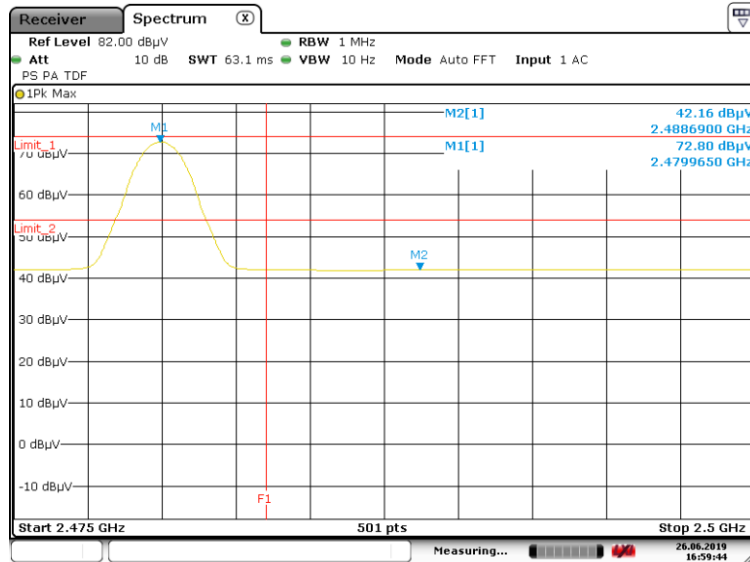
Date: 26.JUN.2019 17:10:09

Bandedge @ mode BLE Ch39 Peak



Date: 26.JUN.2019 16:56:20

Bandedge @ mode BLE Ch39 Average



Date: 26.JUN.2019 16:59:44

6. AC Power Line Conducted Emission

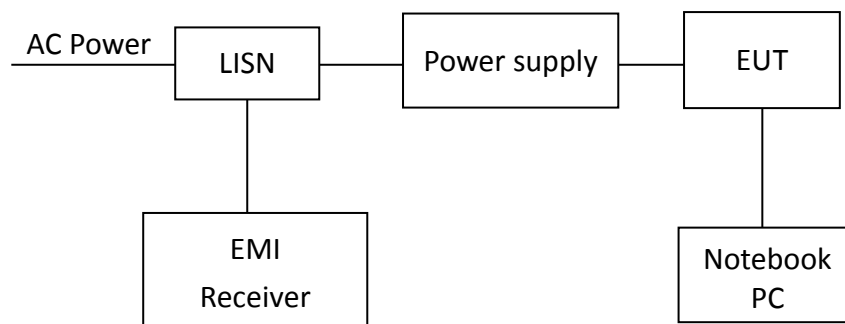
6.1 Measuring instrument setting

Receiver Function	Setting
Detector	QP
Start frequency	0.15MHz
Stop frequency	30MHz
IF bandwidth	9 kHz
Attenuation	10dB

6.2 Test Procedure

Step 1	Configure the EUT according to ANSI C63.10:2013. The EUT or host of EHT has to be placed 0.4 meter far from the conducting wall of the shielding room and at least 80 centimeters from any other grounded conducting surface.
Step 2	Connect EUT or host of EUT to the power mains through a line impedance stabilization network.
Step 3	All the companion devices are connected to the other LISN. The LISN should provide 50Uh/50ohms coupling impedance.
Step 4	The frequency range from 150 kHz to 30MHz was searched.
Step 5	Set the test-receiver system to peak detector and specified bandwidth with maximum hold mode.
Step 6	The measurement has to be done between each power line and ground at the power terminal.

6.3 Test Diagram



6.4 Limit

Frequency (MHz)	Conducted Limit (dBuV)	
	Q.P.	Ave.
0.15~0.50	66 – 56	56 – 46
0.50~5.00	56	46
5.00~30.0	60	50

6.5 Operating Environment Condition

Temperature (°C) :	26
Relative Humidity (%) :	63

TEST REPORT

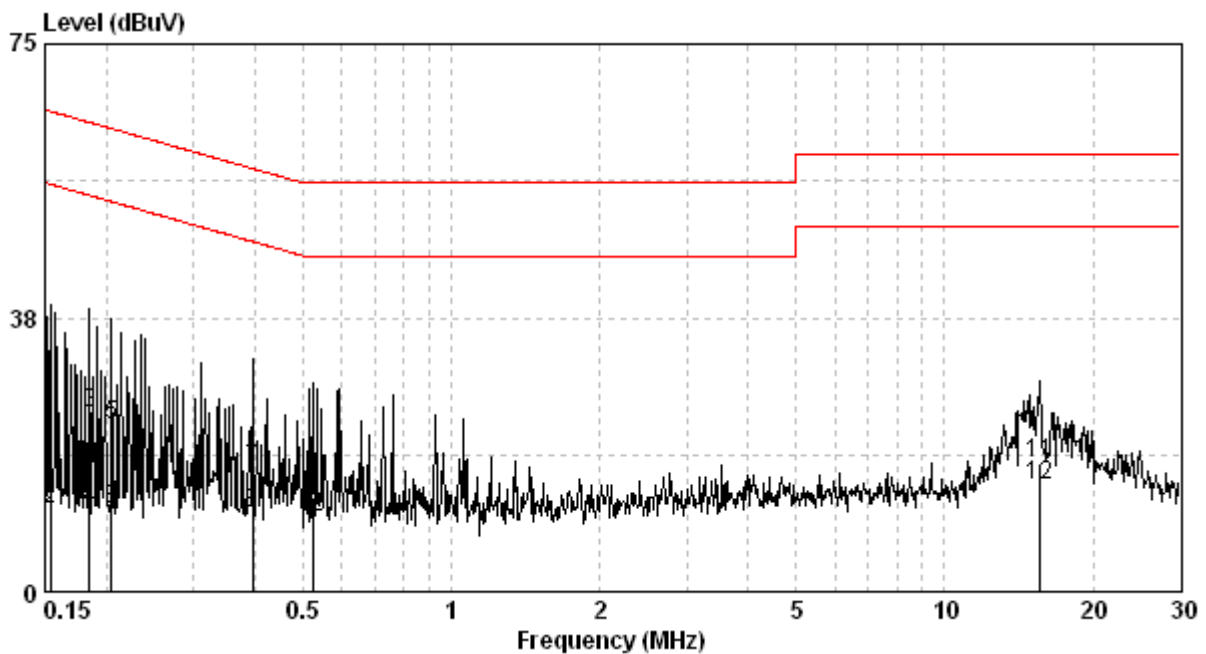
6.6 Test Results

Phase: Live Line
 Model No.: LMU3040LVB
 Test Condition: Tx mode

Frequency (MHz)	Corr. Factor (dB)	Reading QP (dBuV)	Level QP (dBuV)	Limit QP (dBuV)	Reading AV (dBuV)	Level AV (dBuV)	Limit AV (dBuV)	Margin (dB)	
								QP	AV
0.154	9.69	15.07	24.76	65.78	1.70	11.39	55.78	-41.02	-44.39
0.184	9.68	14.76	24.44	64.28	1.64	11.32	54.28	-39.85	-42.96
0.205	9.68	13.24	22.92	63.40	1.48	11.16	53.40	-40.48	-42.25
0.396	9.69	7.18	16.86	57.95	0.92	10.61	47.95	-41.08	-37.34
0.524	9.70	3.15	12.85	56.00	0.46	10.16	46.00	-43.15	-35.84
15.635	10.04	7.66	17.70	60.00	4.54	14.59	50.00	-42.30	-35.41

Remark:

1. Corr. Factor (dB) = LISN Factor (dB) + Cable Loss (dB)
2. Level (dBuV) = Corr. Factor (dB) + Reading (dBuV)
3. Margin (dB) = Level (dBuV) – Limit (dBuV)



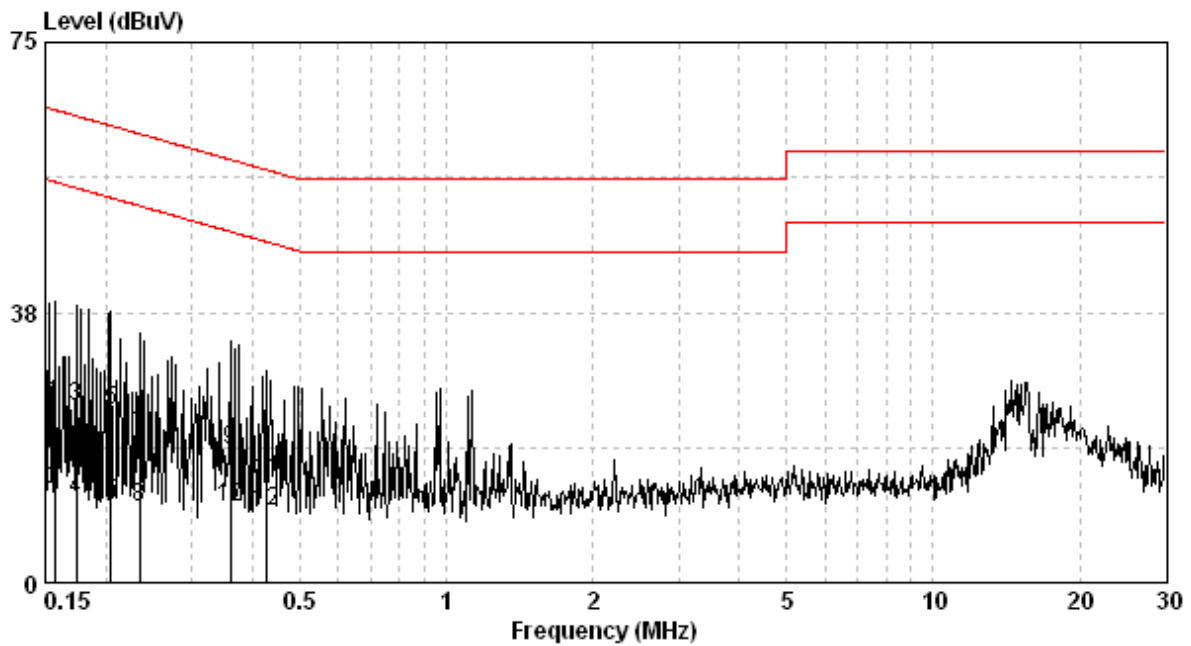
TEST REPORT

Phase: Neutral Line
 Model No.: LMU3040LVB
 Test Condition: Tx mode

Frequency (MHz)	Corr. Factor (dB)	Reading QP (dBuV)	Level QP (dBuV)	Limit QP (dBuV)	Reading AV (dBuV)	Level AV (dBuV)	Limit AV (dBuV)	Margin (dB)	
								QP	AV
0.156	9.69	15.09	24.78	65.65	3.27	12.96	55.65	-40.87	-42.68
0.174	9.68	14.87	24.55	64.77	1.81	11.50	54.77	-40.22	-43.27
0.205	9.68	14.20	23.88	63.40	1.60	11.28	53.40	-39.52	-42.12
0.234	9.68	10.71	20.39	62.30	0.72	10.40	52.30	-41.91	-41.90
0.360	9.68	8.62	18.30	58.74	0.71	10.39	48.74	-40.44	-38.35
0.426	9.68	4.45	14.13	57.33	0.13	9.81	47.33	-43.20	-37.52

Remark:

1. Corr. Factor (dB) = LISN Factor (dB) + Cable Loss (dB)
2. Level (dBuV) = Corr. Factor (dB) + Reading (dBuV)
3. Margin (dB) = Level (dBuV) – Limit (dBuV)



Appendix A: Test equipment list

Test Equipment/ Test site	Brand	Model No.	Serial No.	Calibration Date	Next Calibration Date
ESCI EMI Test Receiver	Rohde & Schwarz	ESCI	100018	2018/11/14	2019/11/13
Spectrum Analyzer	Rohde & Schwarz	FSP30	100137	2018/09/03	2019/09/02
Horn Antenna (1-18G)	SHWARZBECK	BBHA 9120 D	9120D-456	2019/02/01	2020/01/31
Horn Antenna (14-42G)	SHWARZBECK	BBHA 9170	BBHA9170159	2017/09/04	2020/09/02
Broadband Antenna	SHWARZBECK	VULB 9168	9168-172	2019/06/05	2020/06/03
Pre-Amplifier	EMC Co.	EMC12635SE	980205	2018/12/10	2019/12/09
Pre-Amplifier	MITEQ	JS4-26004000--27-8A	828825	2018/08/28	2019/08/27
Signal Analyzer	Agilent	N9030A	MY51380492	2018/08/24	2019/08/23
966-2(A) Cable 9kHz~26.5GHz	SUHNER	SMA / EX 100	N/A	2018/08/07	2019/08/06
966-2(B) Cable 9kHz~26.5GHz	SUHNER	SUCOFLEX 104P	CB0005	2018/08/07	2019/08/06
RF Cable 9kHz~26.5GHz	SUHNER	SUCOFLEX 102	CB0006	2019/05/02	2020/04/30
966-2_3m Semi-Anechoic Chamber	966_2	CEM-966_2	N/A	2019/02/23	2020/02/22
Hight Pass Filter	Wainwright	WHKX3.0/18G-12 SS	N/A	2019/05/30	2020/05/28
Active Loop Antenna	SCHWARZBECK MESS-ELEKTRONIC	FMZB1519	1519-067	2019/04/19	2020/04/17

TEST REPORT

Test Equipment/ Test site	Brand	Model No.	Serial No.	Calibration Date	Next Calibration Date
EMI Test Receiver	R&S	ESR7	101822	2019/01/30	2020/01/29
Two-Line V-Network	R&S	ENV216	101160	2018/07/24	2019/07/23
Two-Line -V-Network	R&S	ESH3-Z5	838979/014	2018/09/03	2019/09/02
CON-2 Shielded Room	N/A	N/A	N/A	NCR	NCR
CON-2 Cable	SUHNER	EMCCFD300-B M-NM-6000	170502	2019/05/06	2020/05/04
Test software	Audix	e3	4.20040112L	NCR	NCR

Note: No Calibration Required (NCR).

Appendix B: Measurement Uncertainty

This uncertainty represents an expanded uncertainty expressed at approximately the 95 % confidence level using a coverage factor of k=2.

Item	Uncertainty
Vertically polarized radiated disturbances from 30MHz~1GHz in a semi-anechoic chamber at a distance of 3m	5.2 dB
Horizontally polarized radiated disturbances from 30MHz~1GHz in a semi-anechoic chamber at a distance of 3m	5.28 dB
Vertically polarized Radiated disturbances from 1GHz~18GHz in a semi-anechoic chamber at a distance of 3m	4.29 dB
Horizontally polarized Radiated disturbances from 1GHz~18GHz in a semi-anechoic chamber at a distance of 3m	4.29 dB
Vertically polarized Radiated disturbances from 18GHz~26.5GHz in a semi-anechoic chamber at a distance of 1m	2.45 dB
Horizontally polarized Radiated disturbances from 18GHz~26.5GHz in a semi-anechoic chamber at a distance of 1m	2.45 dB
Radiated disturbances from 9kHz~30MHz in a semi-anechoic chamber at a distance of 3m	2.99 dB
Emission on the Band Edge Test	4.29 dB
20dB Bandwidth	7.69 %
AC Power Line Conducted Emission	2.59 dB