

Appendix B

Highest Test Plots

Table of Contents

1. BT Head-worn 0mm SAR 3

1. BT Head-worn 0mm SAR

Date: 14.06.2024

Test Laboratory: Guangdong Dongdian Testing Service Co., Ltd.

Q24052314-1E

DUT: BLUETOOTH HEADSET; Model Number: TUNE FLEX 2; Serial: S24052314-017

Communication System: UID 0, Bluetooth (0); Communication System Band: Bluetooth, Frequency: 2402 MHz; Communication System PAR: 0 dB; PMF: 1.12202e-005

Medium parameters used (interpolated): $f = 2402$ MHz, $\sigma = 1.772$ S/m, $\epsilon_r = 40.837$; $\rho = 1000$ kg/m³

Phantom section: Flat Section

Measurement Standard: DASYS (IEEE/IEC/ANSI C63.19-2011)

DASY Configuration:

- Probe: EX3DV4 - SN3906; ComF(7.95, 7.95, 7.95); Calibrated: 29.04.2024;
- Sensor-Surface: 1.4mm (Mechanical Surface Detection), $z = 1.0, 31.0$
- Electronics: DAE4 Sn1366; Calibrated: 29.04.2024
- Phantom: ELI v5 0; Type: QDOVA002AA; Serial: TP-1197
- DASY52 52.8.8(1222); SEMCAD X 14.6.10(7331)

Configuration/R Right side 2DH5 2402/Area Scan (5x6x1): Measurement grid: $dx=10$ mm, $dy=10$ mm

Info: Interpolated medium parameters used for SAR evaluation.

Maximum value of SAR (measured) = 0.0769 W/kg

Configuration/R Right side 2DH5 2402/Zoom Scan (7x7x7)/Cube 0: Measurement grid: $dx=5$ mm, $dy=5$ mm, $dz=5$ mm

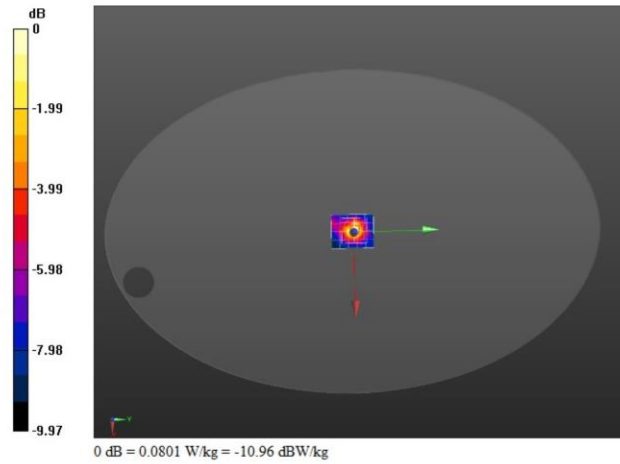
Reference Value = 6.768 V/m; Power Drift = -0.16 dB

Peak SAR (extrapolated) = 0.116 W/kg

SAR(1 g) = 0.049 W/kg; SAR(10 g) = 0.024 W/kg

Info: Interpolated medium parameters used for SAR evaluation.

Maximum value of SAR (measured) = 0.0801 W/kg



Date: 14.06.2024

Test Laboratory: Guangdong Dongdian Testing Service Co., Ltd.

Q24052314-1E**DUT: BLUETOOTH HEADSET; Model Number: TUNE FLEX 2; Serial: S24052314-017**

Communication System: UID 0, Bluetooth (0); Communication System Band: Bluetooth; Frequency: 2402 MHz; Communication System PAR: 0 dB; PMF: 1.12202e-005

Medium parameters used (interpolated): $f = 2402$ MHz, $\sigma = 1.772$ S/m, $\epsilon_r = 40.837$; $\rho = 1000$ kg/m³

Phantom section: Flat Section

Measurement Standard: DASYS (IEEE/IEC/ANSI C63.19-2011)

DASY Configuration:

- Probe: EX3DV4 - SN3906; Com:F(7.95, 7.95, 7.95); Calibrated: 29.04.2024;
- Sensor-Surface: 1.4mm (Mechanical Surface Detection), $z = 1.0, 31.0$
- Electronics: DAE4 Sn1366; Calibrated: 29.04.2024
- Phantom: ELI v5 0; Type: QDOVA002AA; Serial: TP-1197
- DASY52 52.8.8(1222); SEMCAD X 14.6.10(7331)

Configuration/L Top side 2DH5 2402/Area Scan (5x6x1): Measurement grid: $dx=10$ mm, $dy=10$ mm

Info: Interpolated medium parameters used for SAR evaluation.

Maximum value of SAR (measured) = 0.0379 W/kg

Configuration/L Top side 2DH5 2402/Zoom Scan (7x7x7)/Cube 0: Measurement grid: $dx=5$ mm, $dy=5$ mm, $dz=5$ mm

Reference Value = 3.510 V/m; Power Drift = 0.18 dB

Peak SAR (extrapolated) = 0.0820 W/kg

SAR(1 g) = 0.024 W/kg; SAR(10 g) = 0.015 W/kg

Info: Interpolated medium parameters used for SAR evaluation.

Maximum value of SAR (measured) = 0.0558 W/kg

