

QUICK START GUIDE

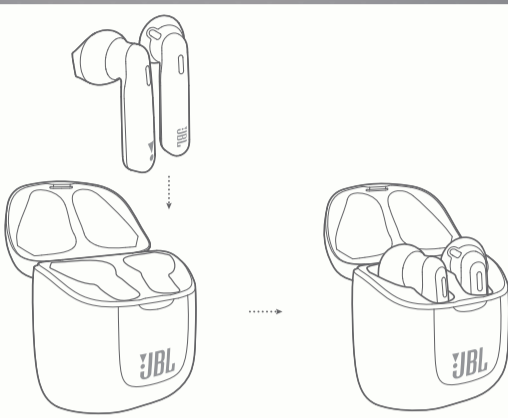
TUNE220TWS



WHAT'S IN THE BOX



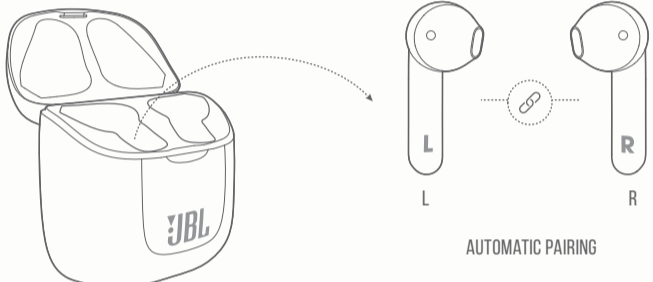
FIRST TIME USE



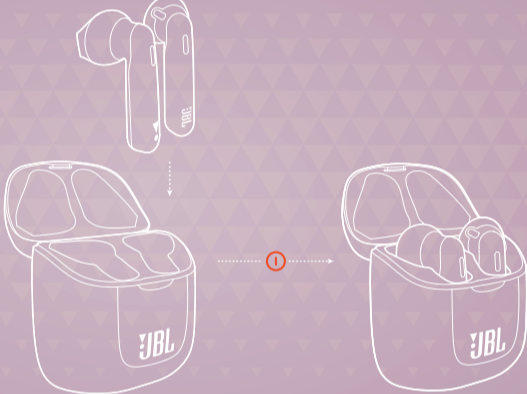
POWER ON & CONNECT



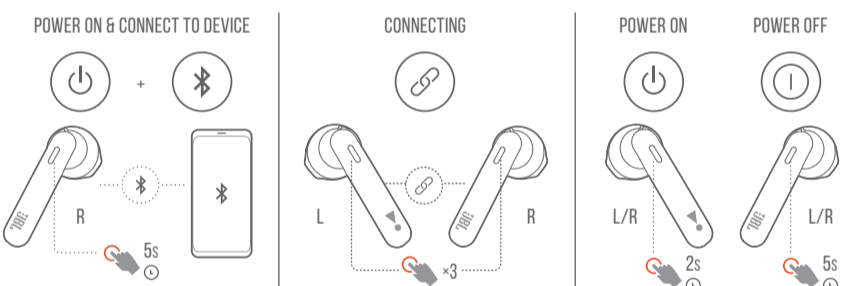
PAIRING



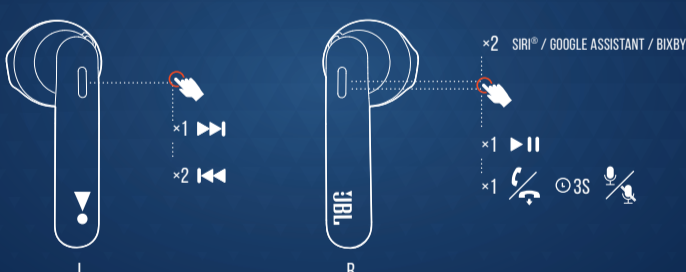
POWER OFF



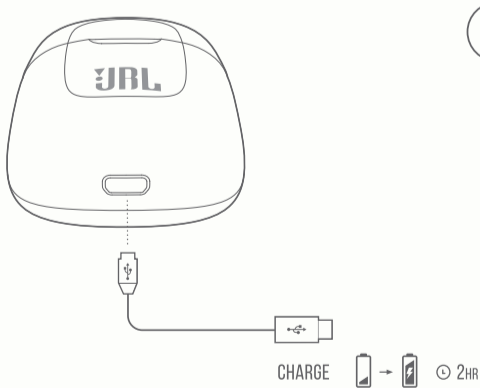
MANUAL CONTROLS



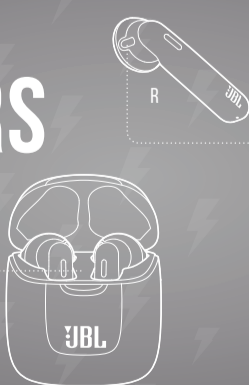
BUTTON COMMAND



CHARGING



LED BEHAVIORS



TECH SPEC

Driver Size:	12 mm Dynamic driver
Frequency Response:	20 Hz – 20 kHz
Sensitivity:	105 dB SPL
Maximum SPL:	98 dB SPL
Microphone sensitivity:	-30 dBV@1 kHz/Pa
Impedance:	32 ohm
Bluetooth transmitted power:	12 dBm
Bluetooth transmitted modulation:	GFSK/π/4DQPSK/8DPSK
Bluetooth frequency:	2.402 GHz – 2.48 GHz
Bluetooth profile version:	A2DP 1.3, AVRCP 1.5, HFP 1.6
Bluetooth version:	5.0
Headset battery type:	Lithium-ion battery (22 mAh / 3.85 V)
Charging case battery type:	Lithium-ion battery (410 mAh / 3.85 V)
Charging time:	<2 hrs from empty
Music playtime with BT on:	3.5 hrs
Total music playtime with charging case:	20 hrs
Weight:	57 g
FCC ID:	APITUNE220TWS



