

QUICK START GUIDE

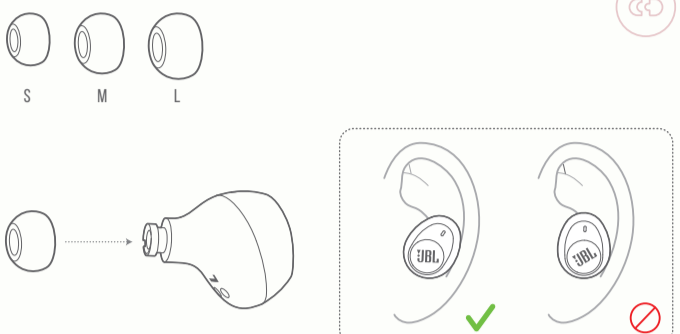
TUNE115TWS



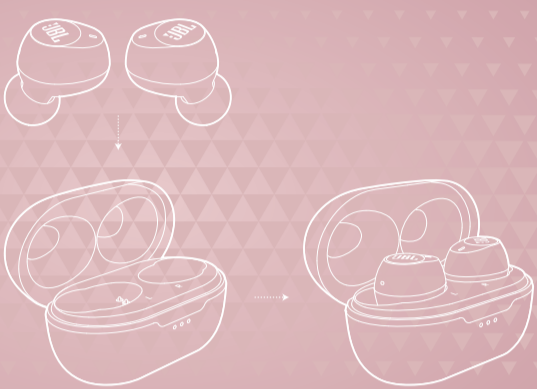
WHAT'S IN THE BOX



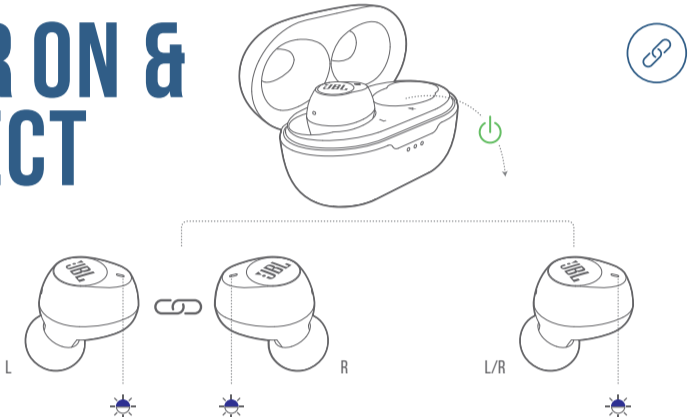
HOW TO WEAR



FIRST TIME USE



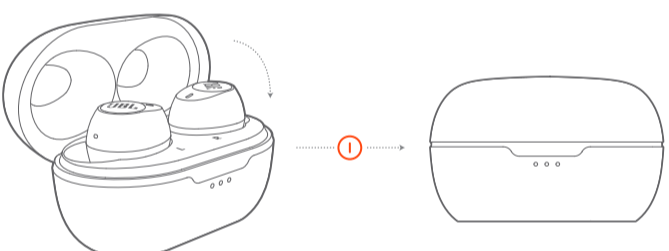
POWER ON & CONNECT



PAIRING



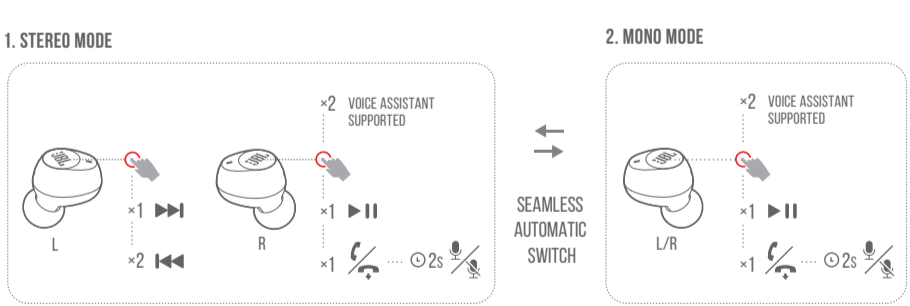
POWER OFF



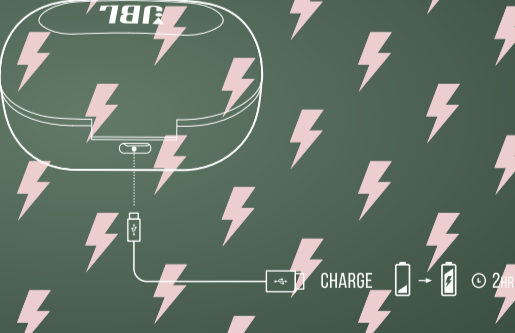
MANUAL CONTROLS



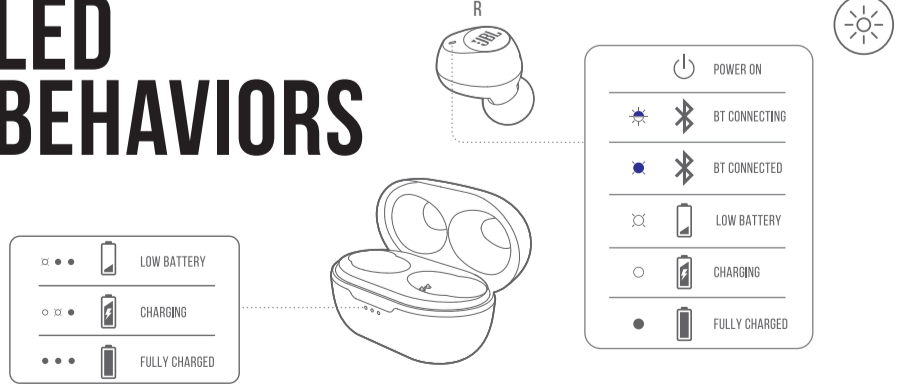
BUTTON COMMAND



CHARGING



LED BEHAVIORS



TECH SPEC

Model: TUNE115TWS
Driver size: 5.8 mm / 0.023" Dynamic driver
Power supply: 5V = 1 A
Weight: 61.3 g / 0.135 lbs
Earpiece: 10 g / 0.022 lbs / pc (20 g / 0.044 lbs combined)
Charging case: 41.3 g / 0.091 lbs
Headset battery type: Lithium-ion Battery (55 mA / 3.7 V)
Charging case battery type: Lithium-ion Battery (410 mA / 3.8 V)
Charging time: < 2 hrs from empty
Music playtime with BT on: up to 5.0 hrs
Frequency Response: 20 Hz - 20 kHz
Impedance: 14 ohm
Sensitivity: 103 dB SPL@1 kHz / 1 mW
Maximum SPL: 93 dB
Microphone sensitivity: 38 dBV@1 kHz / Pa
Bluetooth version: 5.0
Bluetooth profile version: A2DP 1.3, AVRCP 1.5, HFP 1.7
Bluetooth transmitter frequency range: 2.4 GHz - 2.4835 GHz
Bluetooth transmitter power: < 12 dBm
Bluetooth transmitter modulation: GFSK, π/4-QPSK, 8DPSK
Maximum operation temperature: 45 °C

