

TOUR PRO 2 L ear 3DH5 2441Hz_Back side 0mm

Communication System: UID 0, BT(0) (0); Communication System Band: BT; Frequency: 2441 MHz;
Medium parameters used: $f = 2441$ MHz; $\sigma = 1.857$ S/m; $\epsilon_r = 38.981$; $\rho = 1000$ kg/m³
Phantom section: Flat Section

DASY Configuration:

- Probe: EX3DV4 - SN7383; ConvF(7.65, 7.65, 7.65); Calibrated: 2022/1/12;
- Sensor-Surface: 1.4mm (Mechanical Surface Detection), $z = -19.0, 31.0$
- Electronics: DAE3 Sn427; Calibrated: 2022/4/12
- Phantom: SAM; Type: QD000P40CD; Serial: 1805
- DASY52 52.8.8(1222); SEMCAD X 14.6.10(7331)

Configuration/Body/Area Scan (7x7x1): Measurement grid: $dx=12$ mm, $dy=12$ mm

Maximum value of SAR (measured) = 0.864 W/kg

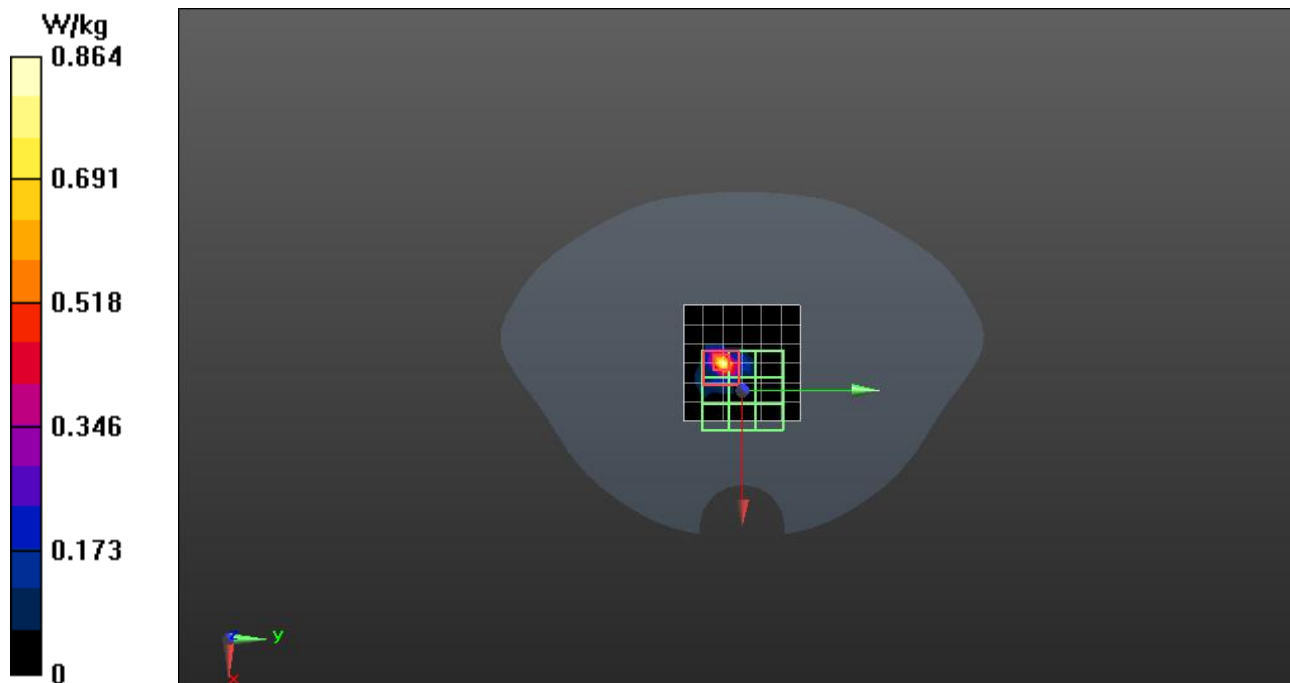
Configuration/Body/Zoom Scan (7x7x4)/Cube 0: Measurement grid: $dx=5$ mm, $dy=5$ mm, $dz=5$ mm

Reference Value = 10.86 V/m; Power Drift = 0.06 dB

Peak SAR (extrapolated) = 1.67 W/kg

SAR(1 g) = 0.319 W/kg; SAR(10 g) = 0.096 W/kg

Maximum value of SAR (measured) = 0.837 W/kg



TOUR PRO 2 R ear DH5 2441Hz_Back side 0mm

Communication System: UID 0, BT(0) (0); Communication System Band: BT; Frequency: 2441 MHz;
Medium parameters used: $f = 2441$ MHz; $\sigma = 1.857$ S/m; $\epsilon_r = 38.981$; $\rho = 1000$ kg/m³
Phantom section: Flat Section

DASY Configuration:

- Probe: EX3DV4 - SN7383; ConvF(7.65, 7.65, 7.65); Calibrated: 2022/1/12;
- Sensor-Surface: 1.4mm (Mechanical Surface Detection), $z = -19.0, 31.0$
- Electronics: DAE3 Sn427; Calibrated: 2022/4/12
- Phantom: SAM; Type: QD000P40CD; Serial: 1805
- DASY52 52.8.8(1222); SEMCAD X 14.6.10(7331)

Configuration/Body/Area Scan (7x7x1): Measurement grid: $dx=12$ mm, $dy=12$ mm

Maximum value of SAR (measured) = 0.593 W/kg

Configuration/Body/Zoom Scan (7x7x4)/Cube 0: Measurement grid: $dx=5$ mm, $dy=5$ mm, $dz=5$ mm

Reference Value = 10.96 V/m; Power Drift = -0.04 dB

Peak SAR (extrapolated) = 0.989 W/kg

SAR(1 g) = 0.184 W/kg; SAR(10 g) = 0.062 W/kg

Maximum value of SAR (measured) = 0.612 W/kg

