

### System Performance Check-2450MHz

Communication System: UID 0, CW (0); Communication System Band: D2450 (2450.0 MHz);

Frequency: 2450 MHz;

Medium parameters used (interpolated):  $f = 2450$  MHz;  $\sigma = 1.82$  S/m;  $\epsilon_r = 40.379$ ;  $\rho = 1000$  kg/m<sup>3</sup>

Phantom section: Flat Section

DASY Configuration:

- Probe: EX3DV4 - SN7383; ConvF(7.85, 7.85, 7.85); Calibrated: 2023/6/5;
- Sensor-Surface: 1.4mm (Mechanical Surface Detection),  $z = 1.0, 31.0$
- Electronics: DAE3 Sn427; Calibrated: 2023/5/17
- Phantom: SAM; Type: QD000P40CD; Serial: 1805
- DASY52 52.8.8(1222); SEMCAD X 14.6.10(7331)

**Configuration/Body/Area Scan (7x9x1):** Measurement grid:  $dx=12$ mm,  $dy=12$ mm

Maximum value of SAR (measured) = 19.6 W/kg

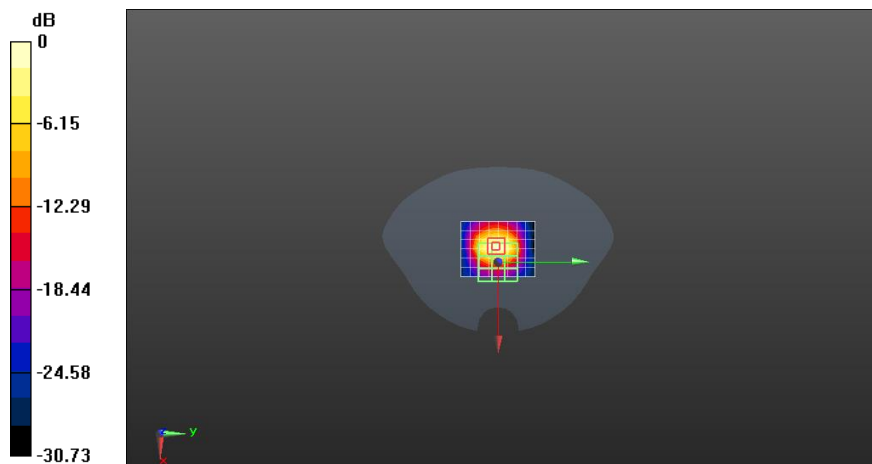
**Configuration/Body/Zoom Scan (7x7x4)/Cube 0:** Measurement grid:  $dx=5$ mm,  $dy=5$ mm,  $dz=5$ mm

Reference Value = 108.4 V/m; Power Drift = 0.07 dB

Peak SAR (extrapolated) = 27.6 W/kg

**SAR(1 g) = 12.8 W/kg; SAR(10 g) = 5.91 W/kg**

Maximum value of SAR (measured) = 22.0 W/kg



0 dB = 19.6 W/kg = 12.92 dBW/kg