

Dongle SRD 1M 2440MHz_ Horizontal-Down (B) 5mm

Communication System: UID 0, BT(0) (0); Communication System Band: BT; Frequency: 2440 MHz;

Medium parameters used: $f = 2440$ MHz; $\sigma = 1.85$ S/m; $\epsilon_r = 39.51$; $\rho = 1000$ kg/m³

Phantom section: Flat Section

DASY Configuration:

- Probe: EX3DV4 - SN7383; ConvF(7.65, 7.65, 7.65); Calibrated: 2022/1/12;
- Sensor-Surface: 1.4mm (Mechanical Surface Detection), $z = -19.0, 31.0$
- Electronics: DAE3 Sn427; Calibrated: 2022/4/12
- Phantom: SAM; Type: QD000P40CD; Serial: 1805
- DASY52 52.8.8(1222); SEMCAD X 14.6.10(7331)

Configuration/Body/Area Scan (7x7x1): Measurement grid: $dx=12$ mm, $dy=12$ mm

Maximum value of SAR (measured) = 0.317 W/kg

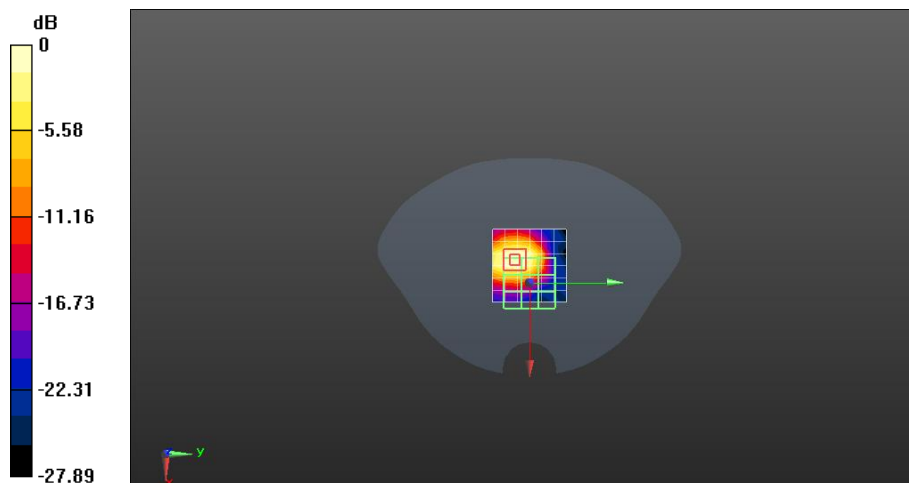
Configuration/Body/Zoom Scan (7x7x4)/Cube 0: Measurement grid: $dx=5$ mm, $dy=5$ mm, $dz=5$ mm

Reference Value = 10.60 V/m; Power Drift = 0.02 dB

Peak SAR (extrapolated) = 0.504 W/kg

SAR(1 g) = 0.242 W/kg; SAR(10 g) = 0.113 W/kg

Maximum value of SAR (measured) = 0.404 W/kg



0 dB = 0.317 W/kg = -4.99 dBW/kg