

1.1 Product Under Test Photo



Figure 1: Photo of EUT, model No5805 Open Cover (Top View)



Figure 2: Photo of EUT, model No5802 Open Cover (Top View)

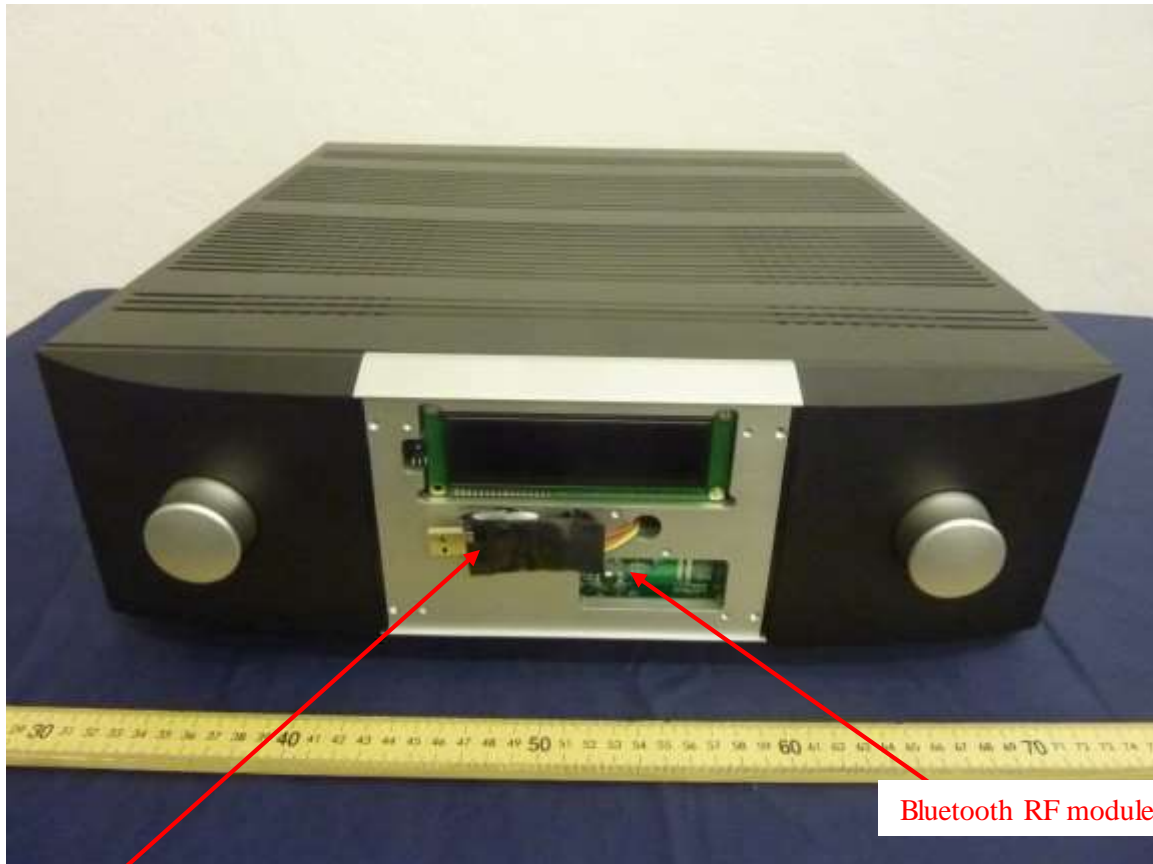


Figure 3: Photo of No5805 and No5802 (Bluetooth module location)

The USB/Serial Interface is used to communicate/control the RF module. This is installed temporarily.

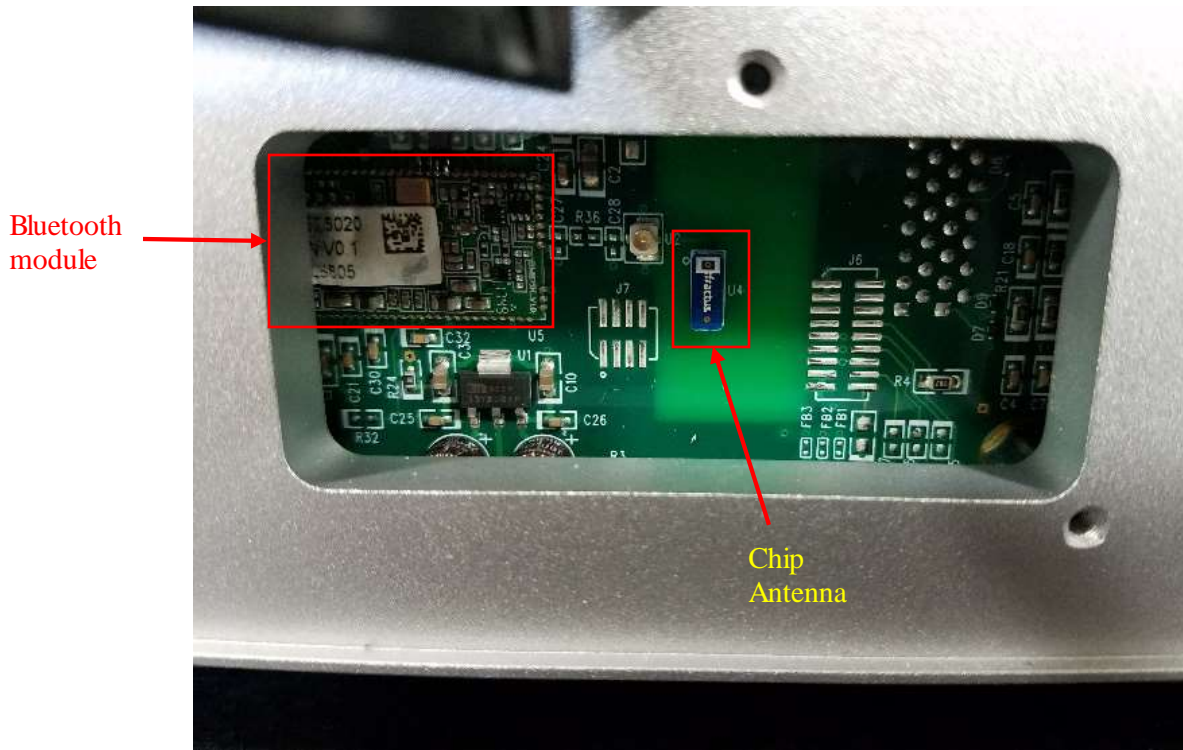


Figure 4: Photo of Bluetooth location, zoomed in (Front)

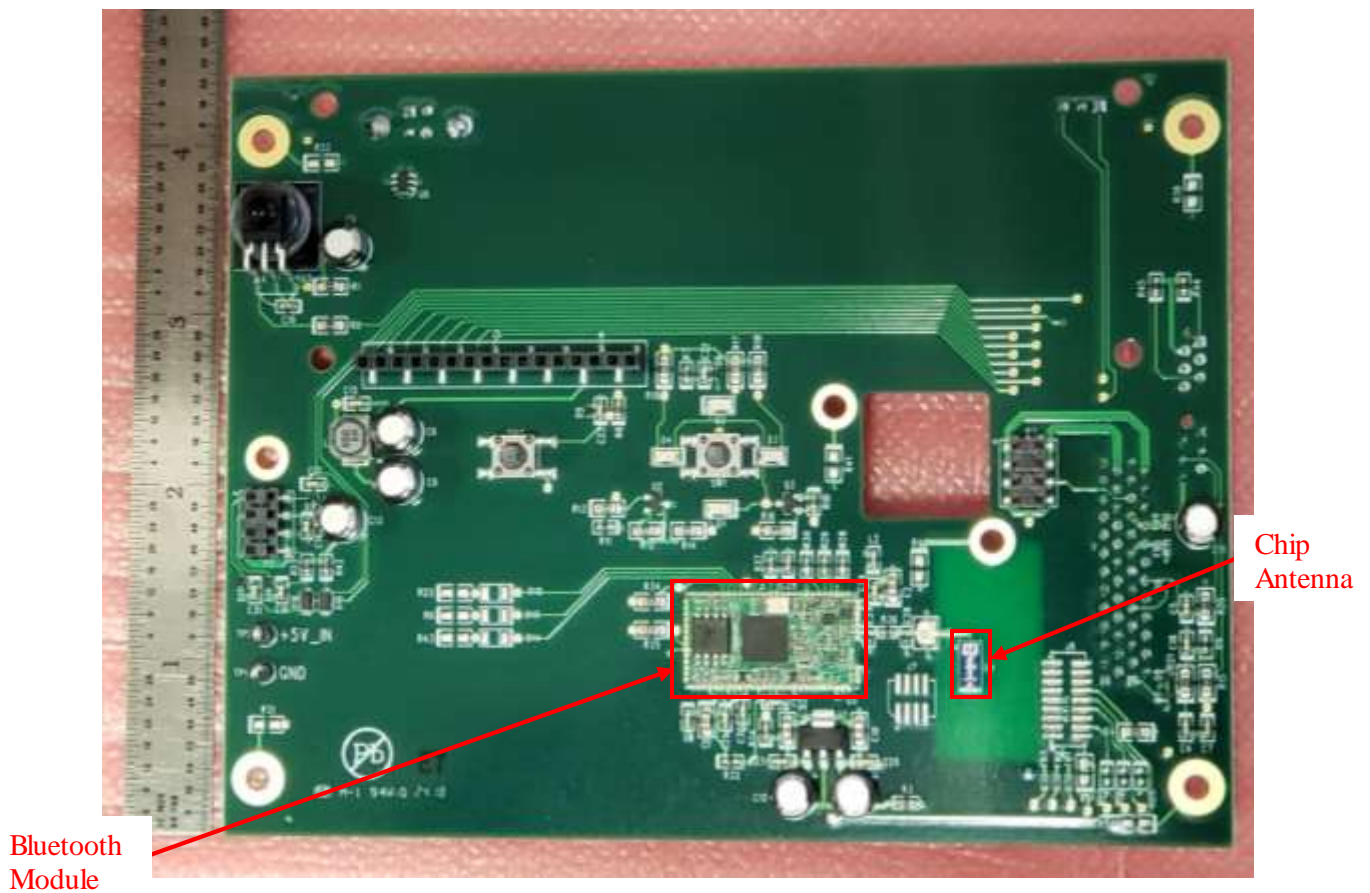


Figure 5: Photo of No5805 and No5802 Front Panel PCB (Front View)



Figure 6: Photo of No5805 and No5802 Front Panel PCB (Back View)



Figure 7: Photo of No5805 and No5802 Digital Inputs PCB (Top View)



Figure 8: Photo of No5805 and No5802 Digital Inputs PCB (Bottom View)



Figure 9: Photo of No5805 and No5802 Control PCB (Top View)

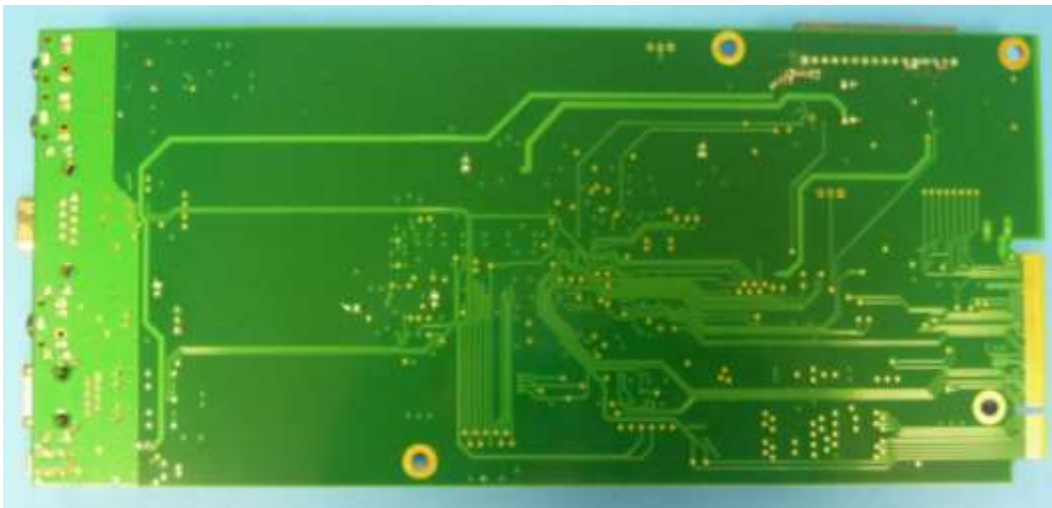


Figure 10: Photo of No5805 and No5802 Control PCB (Bottom View)



Figure 11: Photo of No5805 and No5802 Power Supply PCB (Top View)

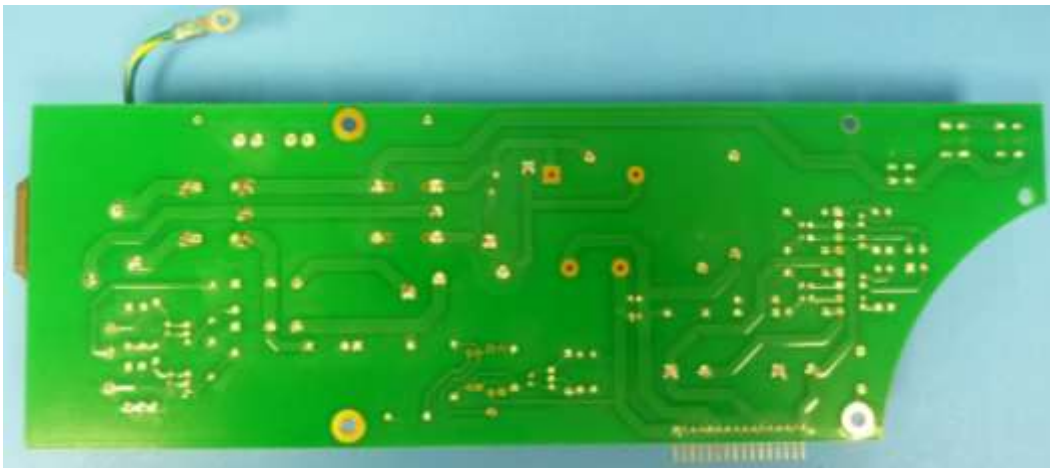


Figure 12: Photo of No5805 and No5802 Power Supply PCB (Bottom View)

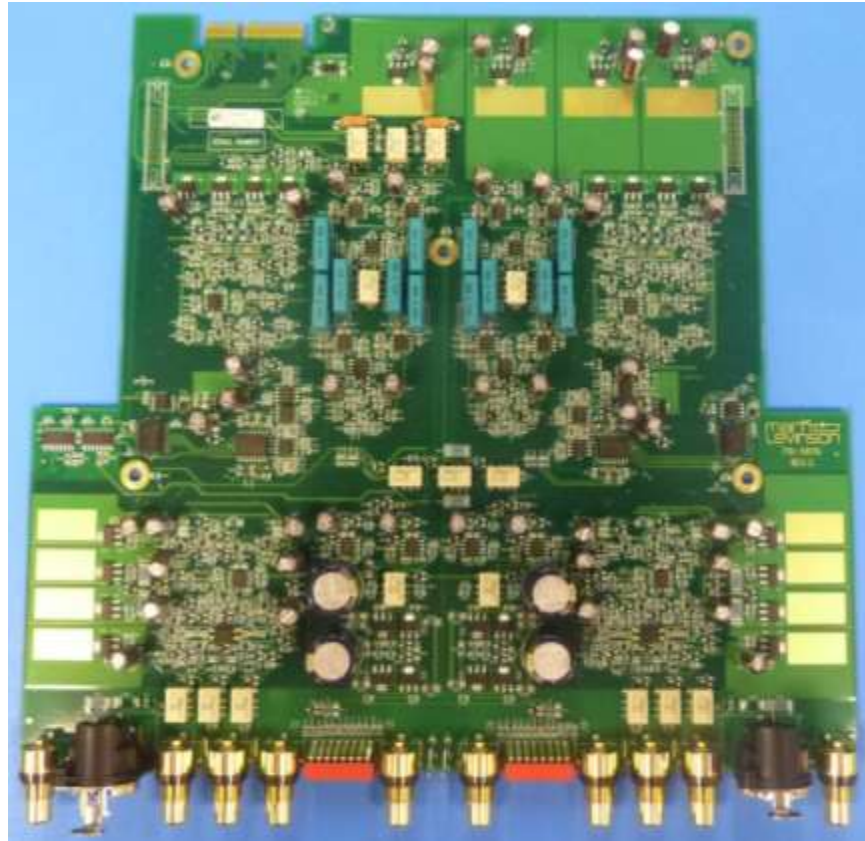


Figure 13: Photo of No5805 Analog Inputs PCB (Top View)

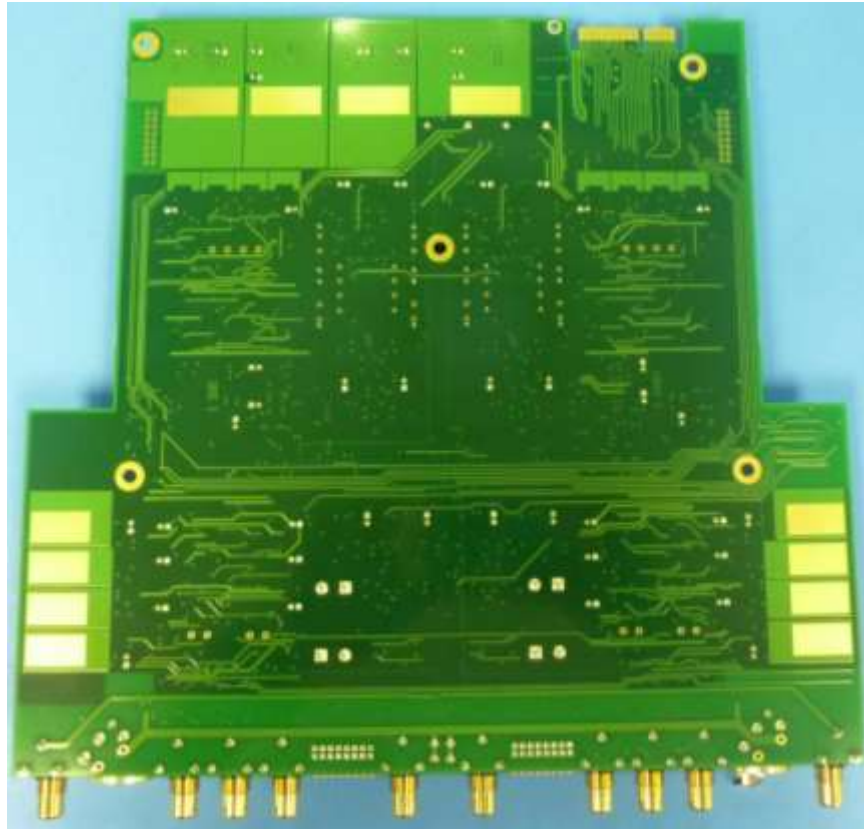


Figure 14: Photo of No5805 Analog Inputs PCB (Bottom View)

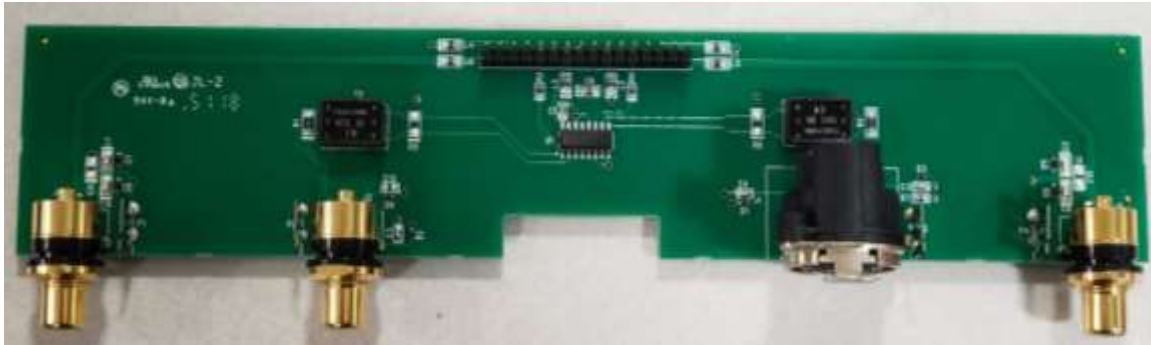


Figure 15: Photo of No5802 Digital Expansion PCB (Top View)

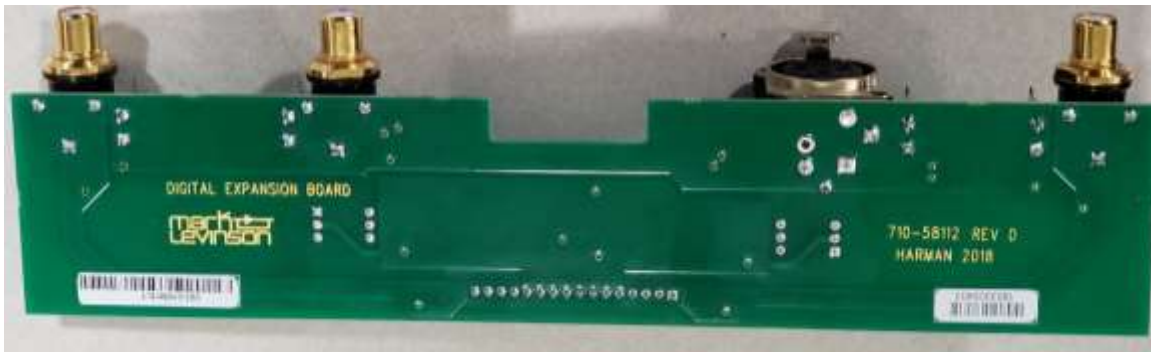


Figure 16: Photo of No5802 Digital Expansion PCB (Bottom View)