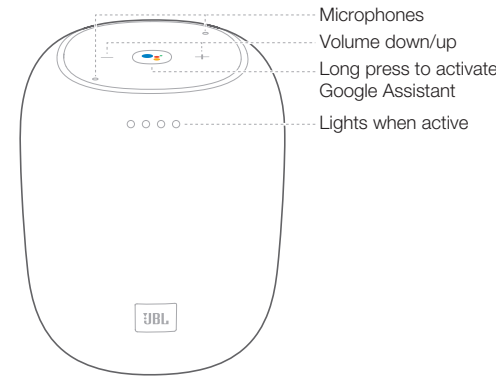
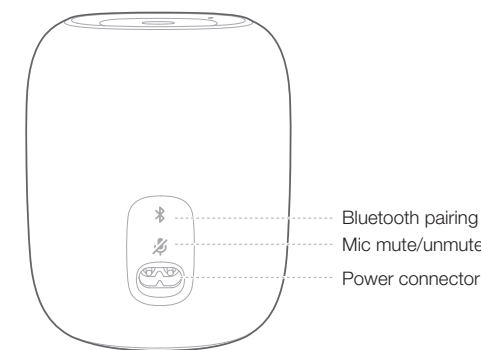


**Product**

**Front and Top**

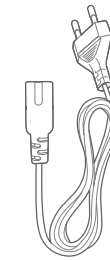


**Back**



**Accessory**

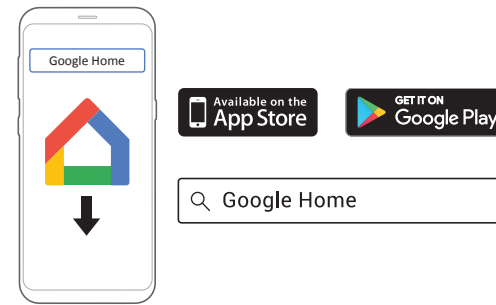
**Regional power cord (varies depending on country)**



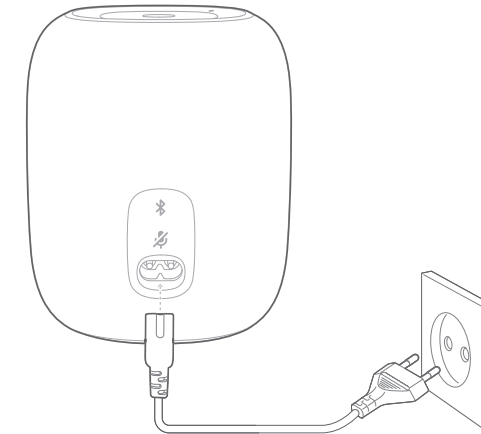
**Get Started with Google Home App**

1. On your smartphone or tablet, download the Google Home app from the App Store (iOS devices) or the Google Play Store (Android devices).

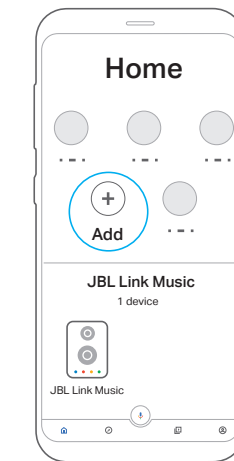
A Google account is required to set up your speaker with Google Assistant built in. Create a new one if you don't have one yet.



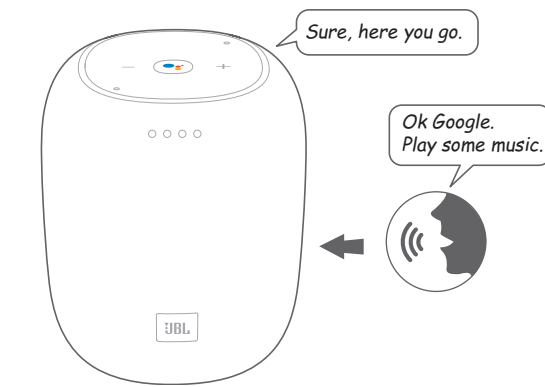
2. Plug in the power.



3. Run the Google Home app and tap **+** Add > **+** Set up device > **🏠** Set up new devices. Follow the instructions in the app to finish the setup.

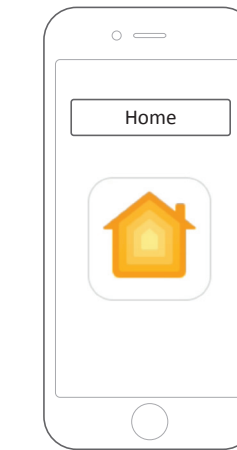


4. Once the setup is finished, you can stream music to your speaker and control it with voice commands.

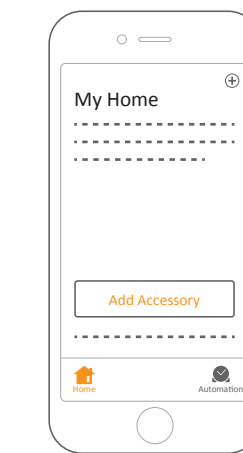


**Apple Airplay 2 Setup in Apple Home App**

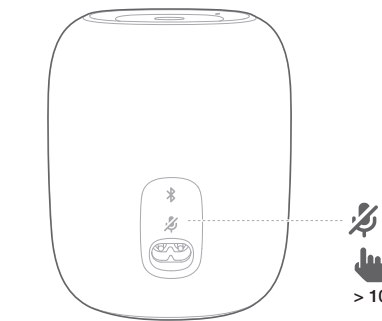
1. Run the Apple Home app on your iOS device.



2. Tap **+** or **Add Accessory** and follow the instructions in the app to finish the setup.



**Wi-Fi Network Reset**



**Specification**

- Transducer: 1 x 64mm
- Output power: 1 x 20W
- Frequency response: 60Hz-20kHz
- Signal-to-noise ratio: >80dB
- Power input: 100-240V – 50/60Hz
- Wireless network: 802.11b/g/n/ac (2.4/5GHz)
- Bluetooth version: 4.2
- Supported audio formats: HE-AAC, LC-AAC, MP3, Vorbis, WAV (LPCM), FLAC, Opus
- Dimensions (W x D x H): 112.3 x 112.3 x 134.5mm
- Weight: 706g



Google, Chromecast built-in, Chromecast, and other marks and logos are trademarks of Google LLC.

Chromecast built-in may require subscription(s).

\* Requires compatible device. Google Assistant requires an internet connection. Availability and performance of certain other features and services are service, device and network-dependent and may not be available in all areas; subscription(s) may be required, and additional terms, conditions and/or charges may apply.



Apple®, AirPlay®, iPad®, iPad Air®, iPad Pro®, iPhone® are trademarks of Apple Inc., registered in the U.S. and other countries.

Use of the Works with Apple badge means that an accessory has been designed to work specifically with the technology identified in the badge and has been certified by the developer to meet Apple performance standards.

To control this AirPlay 2-enabled speaker, iOS 11.4 or later is required.



The Wi-Fi CERTIFIED™ Logo is a certification mark of the Wi-Fi Alliance®.



The Bluetooth® word mark and logos are registered trademarks owned by the Bluetooth SIG, Inc. and any use of such marks by HARMAN International Industries, Incorporated is under license. Other trademarks and trade names are those of their respective owners.

