



## Request for Class II Permissive Change

**Date:** 2016-2-19

To whom it may concern:

About our product: Portable Bluetooth Speaker, FCC ID: APIJBLXTREME, we want apply Class II permissive change, and the difference between old product and new product are as below:

Delete some components around U301 LM13700M which indicated with “NC”:  
R338, R339, Q301, R337, R323, R218, R319, C322, R326, U304A, R332, U304B, D301, D300, R325, R320, Q300, C321, R314, R309, R308, R334, R333, R311, C314, R317, C317, R321, C319, R330, C324, R312, C312, U302A, U302B, U303A, U303B, R329, C326, R322, R316, C315, R313, R327, C325, R315.

At the same time, add R310 and R331 with 0Ω resistance.

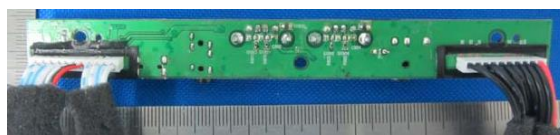
See page 2 (parts of original circuit diagram) and page 3 (parts of new circuit diagram) for the difference.

Changed one of the PCB layout:

Original PCB:



Side 1



Side 2

New PCB:



Side 1



Side 2

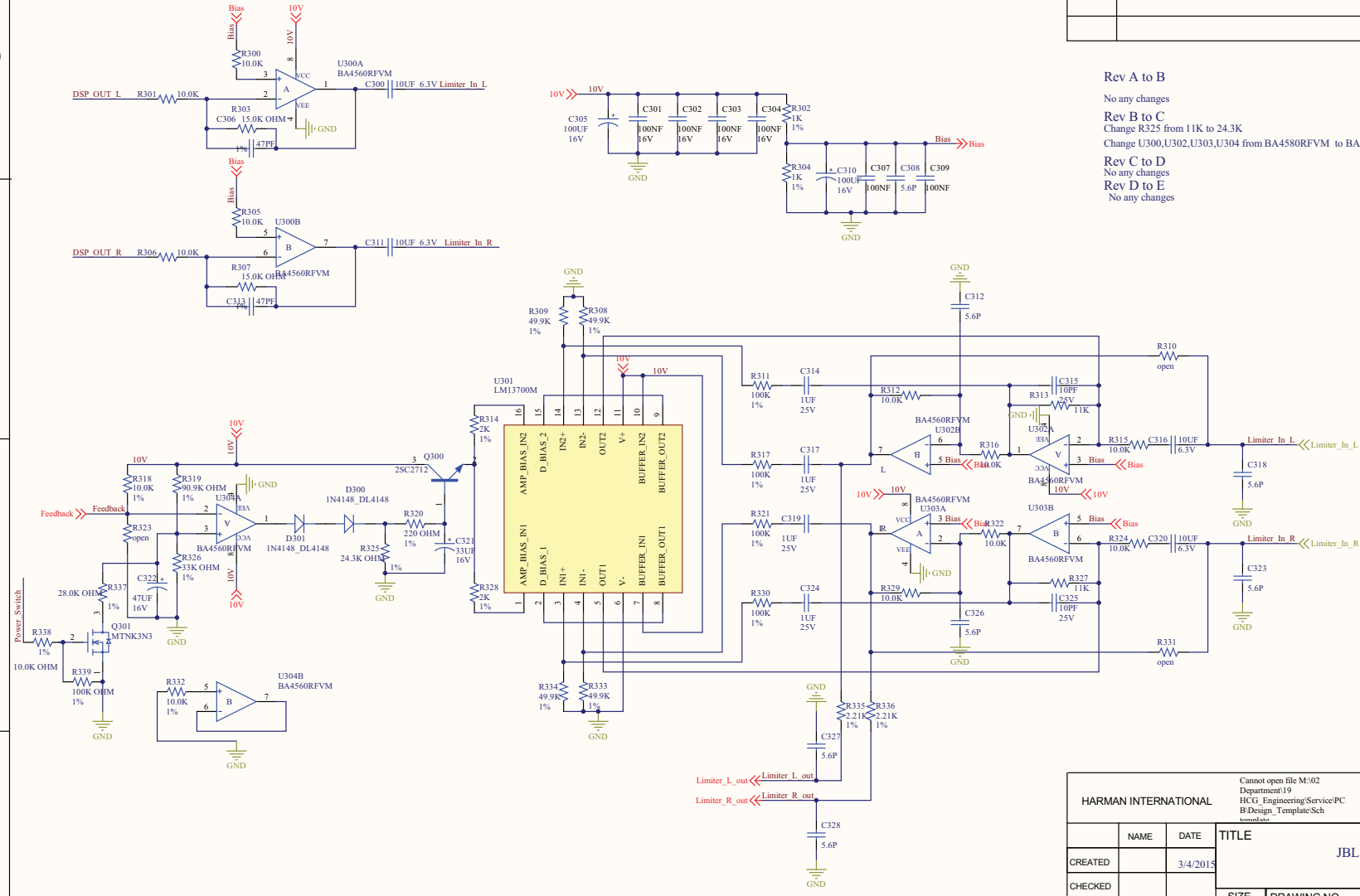
Move the components from side 1 to side 2, and change the electrolytic capacitor from DIP to SMD, but the parameter is the same.

Except above change, all the RF module, Antenna, Enclosure, Internal structure and Printed Circuit Board (PCB) Layout are electrically identical. And, all the changes do not influence all the RF parameter, include the operating frequency band, radiated and conducted output power etc.

PROPRIETARY INFORMATION - THESE DOCUMENTS AND THE INFORMATION CONTAINED THEREIN ARE PROPRIETARY AND ARE NOT TO BE REPRODUCED OR DISCLOSED TO OTHERS FOR MANUFACTURE OR ANY OTHER PURPOSE EXCEPT THOSE SPECIFICALLY AUTHORIZED IN WRITING BY HARMAN INTERNATIONAL

REVISION HISTORY			
REV	ECO	CHECKED	DATE

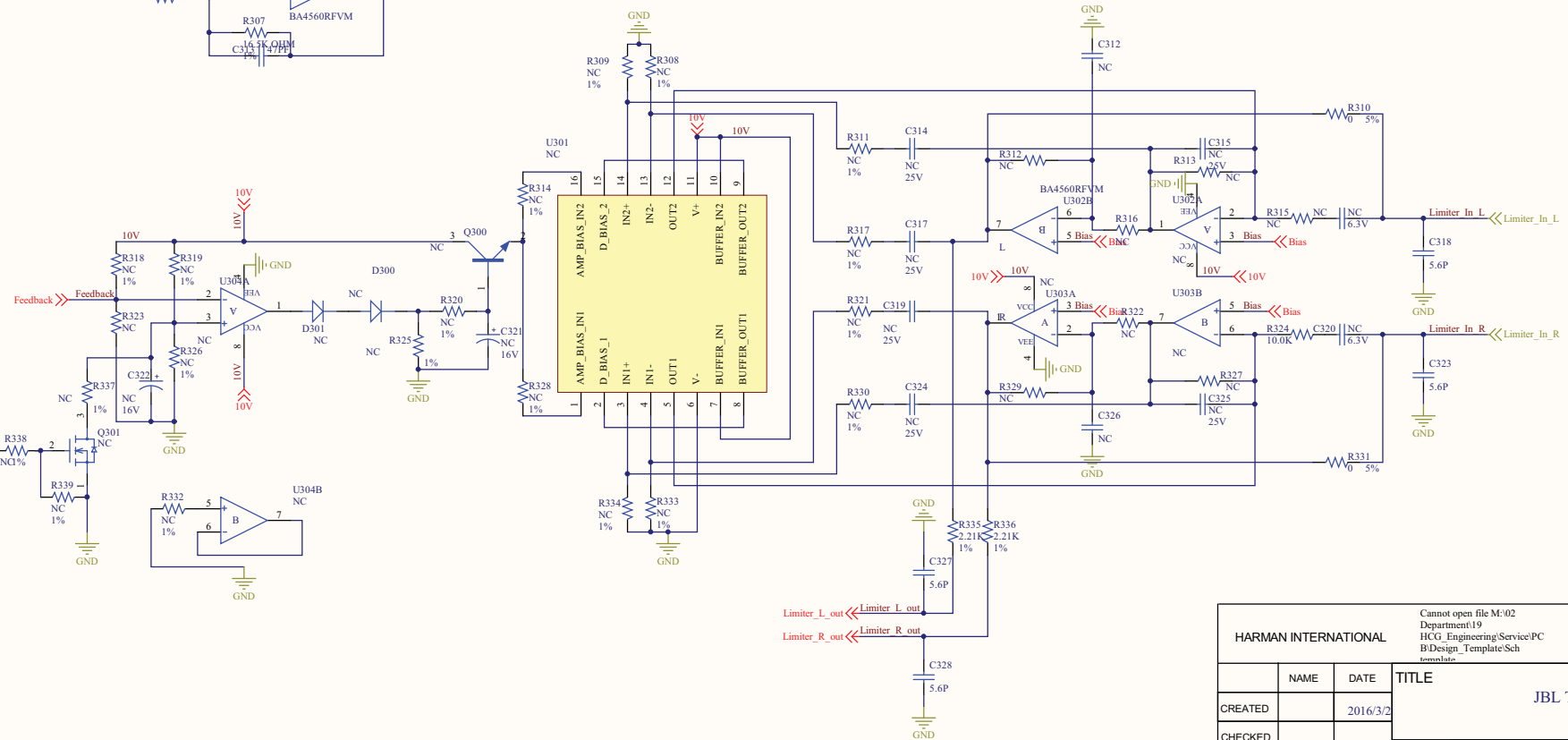
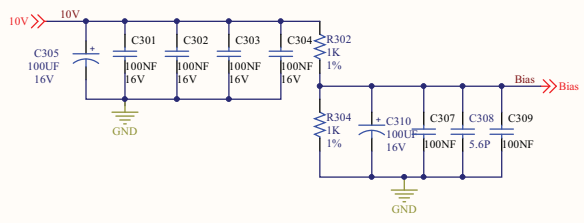
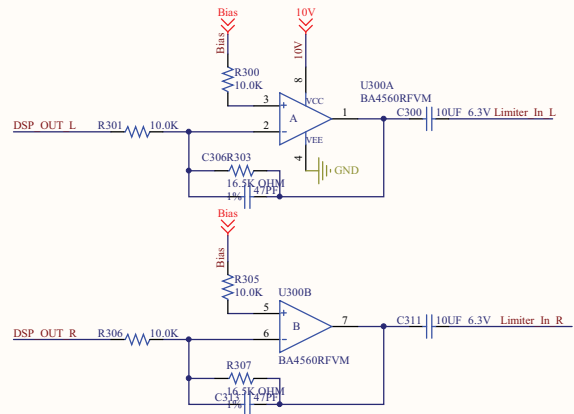
Rev A to B  
No any changes  
Rev B to C  
Change R325 from 11K to 24.3K  
Change U300,U302,U303,U304 from BA4580RFVM to BA4560RFVM  
Rev C to D  
No any changes  
Rev D to E  
No any changes



HARMAN INTERNATIONAL		Cannot open file M:02 Department 19 HCG_Engineering/Service/PC B\Design_Template\Sch template		Harman Consumer Group Shenzhen, Guangdong, China	
NAME	DATE	TITLE			
CREATED	3/4/2015	JBL Trip			
CHECKED		SIZE	DRAWING NO.	REV.	
		B	700-XXXX-XXX 070-XXXX	E	
SCALE:		CAD FILE:		SHEET OF	

PROPRIETARY INFORMATION - THESE DOCUMENTS AND THE INFORMATION CONTAINED THEREIN ARE PROPRIETARY AND ARE NOT TO BE REPRODUCED OR DISCLOSED TO OTHERS FOR MANUFACTURE OR ANY OTHER PURPOSE EXCEPT THOSE SPECIFICALLY AUTHORIZED IN WRITING BY HARMAN INTERNATIONAL

REVISION HISTORY			
REV	ECO	CHECKED	DATE



HARMAN INTERNATIONAL		Cannot open file M:\02 Department\19 HCG_Engineering\Service\PC B\Design_Template\Sch template.dwg		Harman Consumer Group Shenzhen, Guangdong, China	
NAME	DATE	TITLE			
	2016/3/2	JBL Trip			
CREATED		SIZE	DRAWING NO.	REV.	
CHECKED		B	700-XXXX-XXX 070-XXXX	E	
SCALE:	CAD FILE:	SHEET		OF	

Yours sincerely,



Signatory

Name : Tim Song  
Position : Compliance Manager  
Company Name : Harman International Industries, Incorporated  
Address : 8500 Balboa Blvd, Northridge, CA 91329, UNITED STATES  
Tel / Fax : 818-895-8173/818-892-0325  
E-Mail : Tim.song@harman.com