

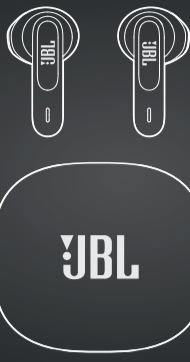
QUICK START GUIDE



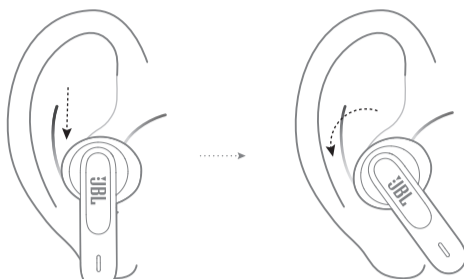
WAVE300 TWS



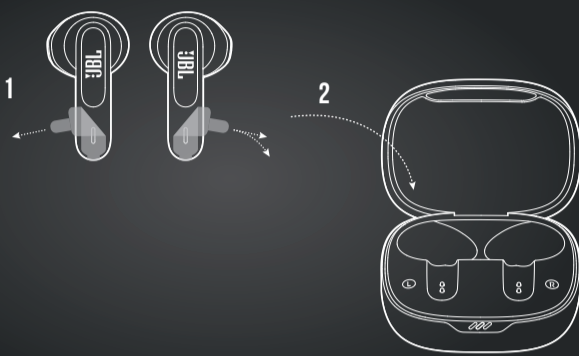
WHAT'S IN THE BOX



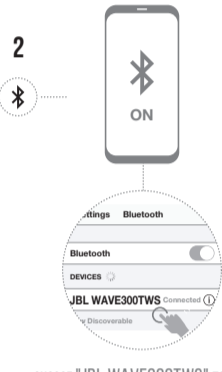
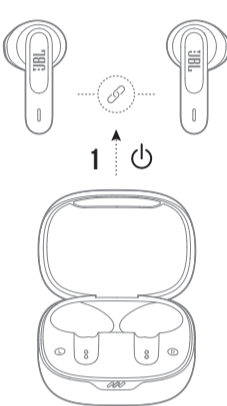
HOW TO WEAR



FIRST TIME USE



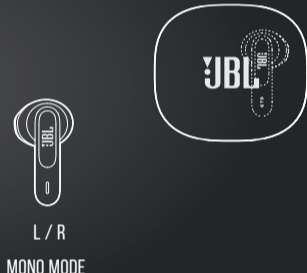
POWER ON & CONNECT



CHOOSE "JBL WAVE300TWS" TO CONNECT



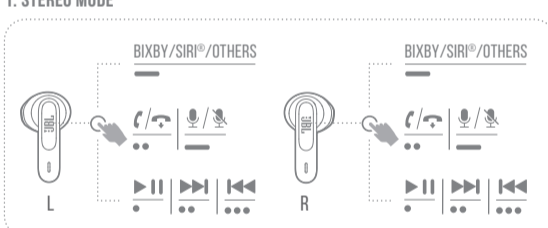
DUAL CONNECT



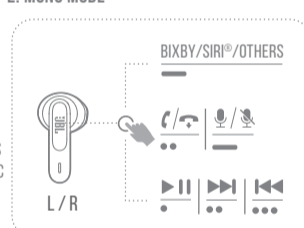
CONTROLS

- TAP × 1
- TAP × 2
- TAP × 3
- HOLD (2s)

1. STEREO MODE

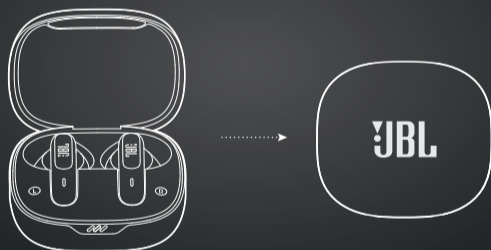


2. MONO MODE



SEAMLESS AUTOMATIC SWITCH

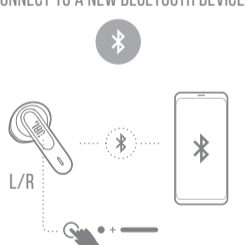
POWER OFF



MANUAL SETUP

- TAP × 1
- TAP × 2
- TAP × 3
- HOLD (5s)

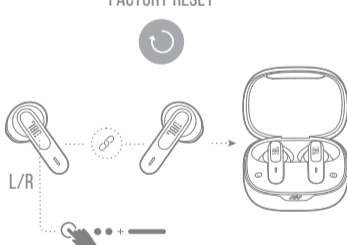
CONNECT TO A NEW BLUETOOTH DEVICE



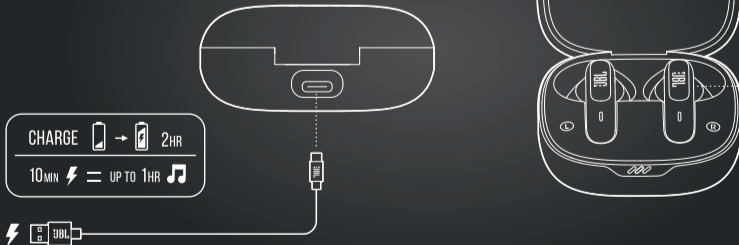
RECONNECT LEFT & RIGHT



FACTORY RESET



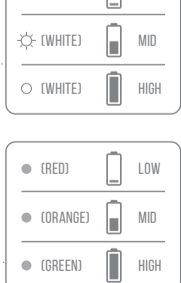
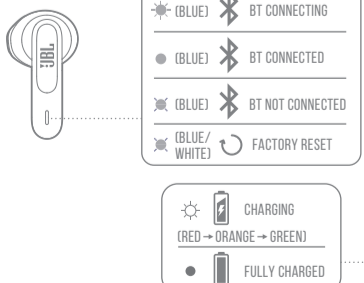
CHARGING



CHARGE 10MIN → 2HR
10MIN ⚡ = UP TO 1HR 🎵



LED BEHAVIORS



TECH SPEC

Model: WAVE300TWS
 Driver size: 12 mm/ 0.47" Dynamic Driver
 Power supply: 5V == 1A
 Earbud: 3.85 g per pc (7.7 g combined)/ 0.009 lbs per pc (0.017 lbs combined)
 Charging case: 36 g/ 0.079 lbs
 Earbud case type: Lithium-ion polymer (40 mAh/ 3.85 V)
 Charging case battery type: Lithium-ion polymer (500 mAh/ 3.8 V)
 Charging time: < 2 hrs from empty
 Music playtime with BT on: up to 6 hrs
 Frequency response: 20 Hz – 20 kHz
 Impedance: 32 ohm
 Sensitivity: 105 dB SPL@1 kHz
 Maximum SPL: 95 dB
 Microphone sensitivity: -38±2 dBV/Pa@1 kHz
 Bluetooth version: 5.2
 Bluetooth profile version: A2DP V1.3 AVRCP V1.6 HFP V1.7
 Bluetooth transmitter frequency range: 2.4 GHz – 2.4835 GHz
 Bluetooth transmitter power: < 12 dBm
 Bluetooth transmitter modulation: GFSK, π/4-DQPSK, 8-DPSK
 Maximum operation temperature: 45 °C



