

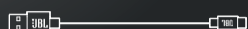
QUICK START GUIDE



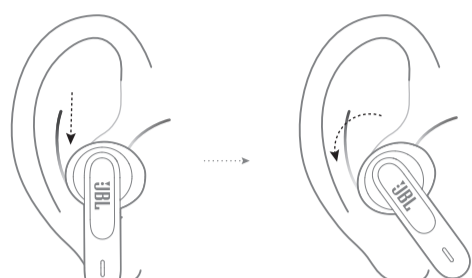
VIBE300 TWS



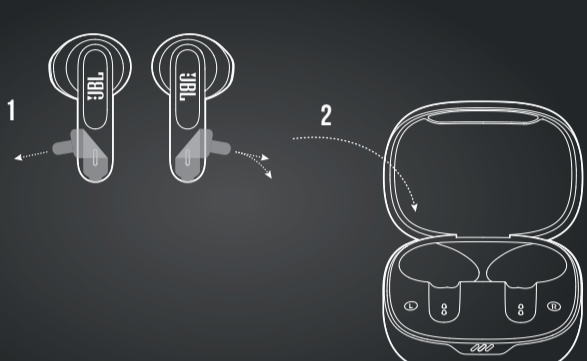
WHAT'S IN THE BOX



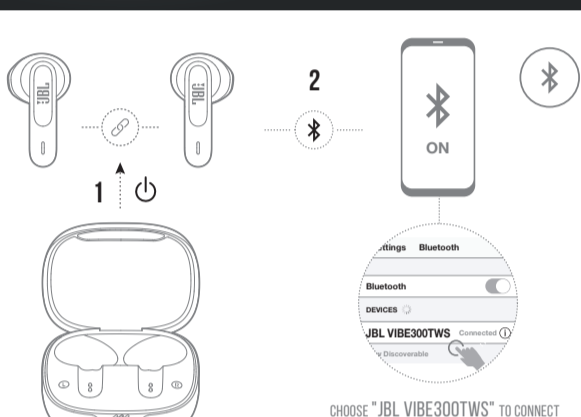
HOW TO WEAR



FIRST TIME USE

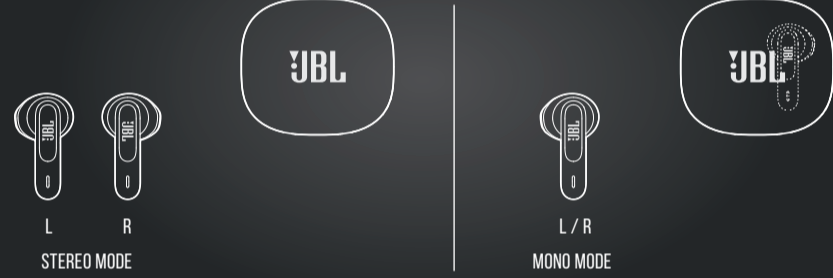


POWER ON & CONNECT



CHOOSE "JBL VIBE300TWS" TO CONNECT

DUAL CONNECT



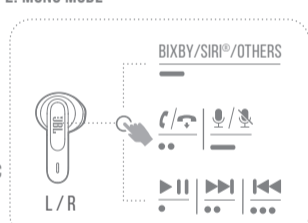
CONTROLS

- TAP x 1
- TAP x 2
- TAP x 3
- HOLD (2s)

1. STEREO MODE

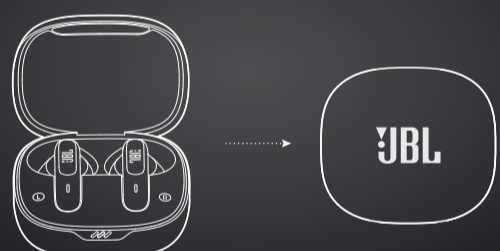


2. MONO MODE



SEAMLESS AUTOMATIC SWITCH

POWER OFF



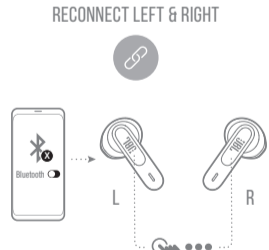
MANUAL SETUP

- TAP x 1
- TAP x 2
- TAP x 3
- HOLD (5s)

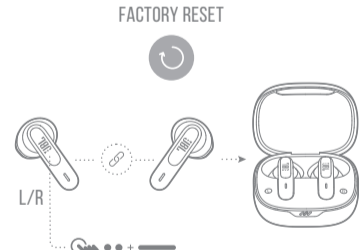
CONNECT TO A NEW BLUETOOTH DEVICE



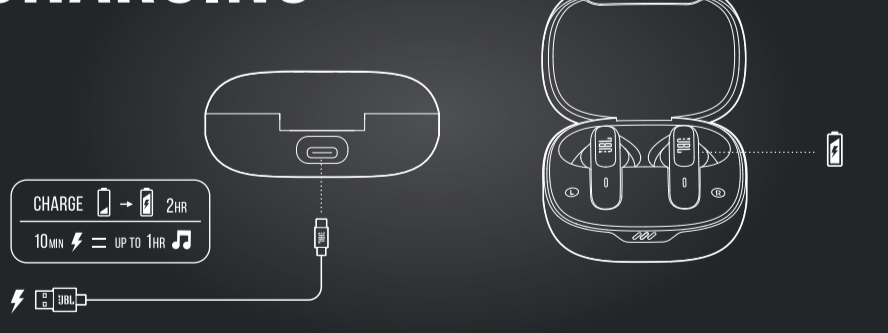
RECONNECT LEFT & RIGHT



FACTORY RESET

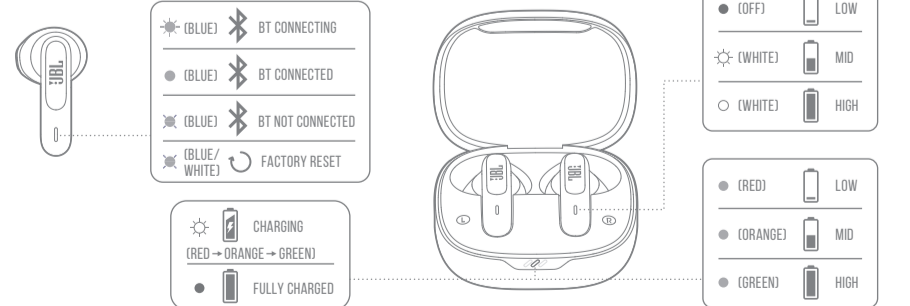


CHARGING



CHARGE 10MIN → 2HR
10MIN ⚡ = UP TO 1HR 🎵

LED BEHAVIORS



TECH SPEC

Model: VIBE300TWS
 Driver size: 12 mm / 0.47" Dynamic Driver
 Power supply: 5V === 1A
 Earbud: 3.85 g per pc (7.7 g combined) / 0.009 lbs per pc (0.017 lbs combined)
 Charging case: 36 g / 0.079 lbs
 Earbud case type: Lithium-ion polymer (40 mAh / 3.85 V)
 Charging case battery type: Lithium-ion polymer (500 mAh / 3.8 V)
 Charging time: < 2 hrs from empty
 Music playtime with BT on: up to 6 hrs
 Frequency response: 20 Hz – 20 kHz
 Impedance: 32 ohm
 Sensitivity: 105 dB SPL@1 kHz
 Maximum SPL: 95 dB
 Microphone sensitivity: -38±2 dBV/Pa@1 kHz
 Bluetooth version: 5.2
 Bluetooth profile version: A2DP V1.3 AVRCP V1.6 HFP V1.7
 Bluetooth transmitter frequency range: 2.4 GHz – 2.4835 GHz
 Bluetooth transmitter power: < 12 dBm
 Bluetooth transmitter modulation: GFSK, π/4-DQPSK, 8-DPSK
 Maximum operation temperature: 45 °C



