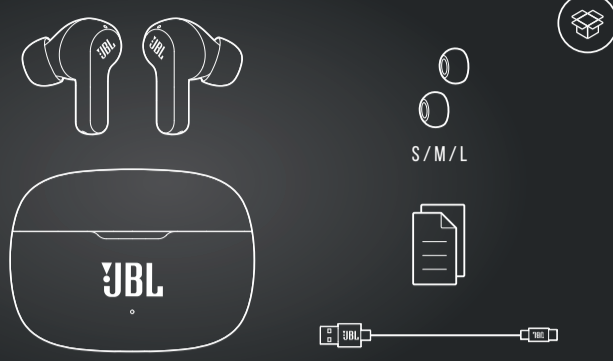


# QUICK START GUIDE

VIBE200 TWS

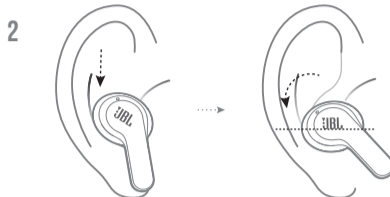
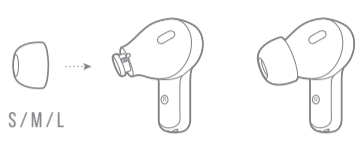


## WHAT'S IN THE BOX

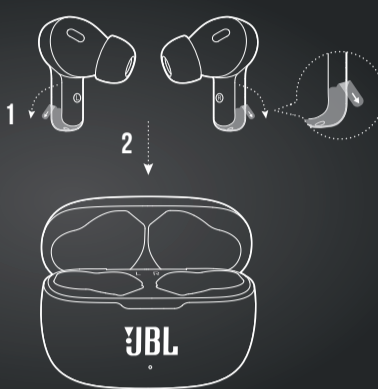


## HOW TO WEAR

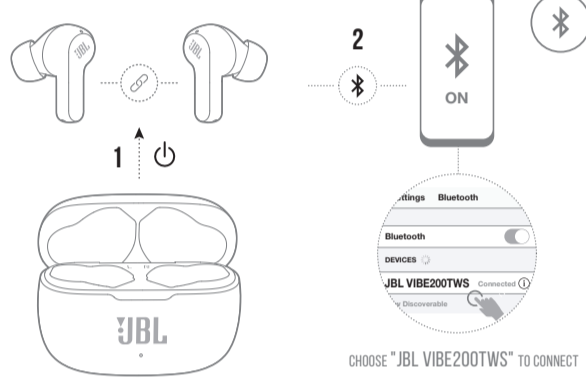
1 TRY DIFFERENT SIZES OF EARTIPS FOR BEST FIT AND SEAL.



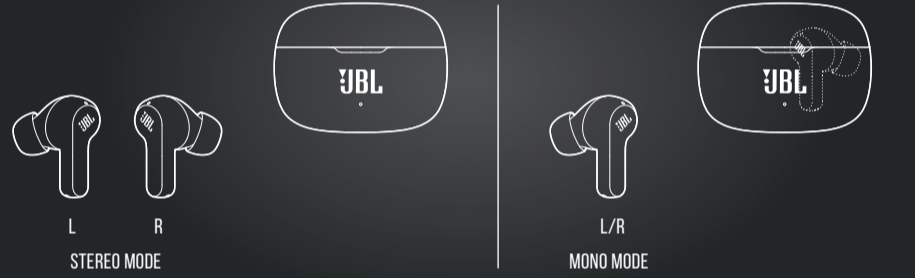
## FIRST TIME USE



## POWER ON & CONNECT



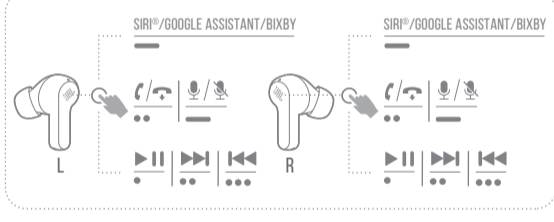
## DUAL CONNECT



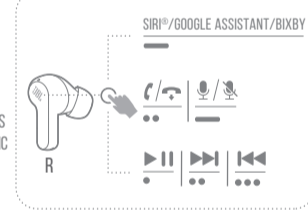
## BUTTON COMMAND

- TAP × 1
- TAP × 2
- TAP × 3
- HOLD (2s)

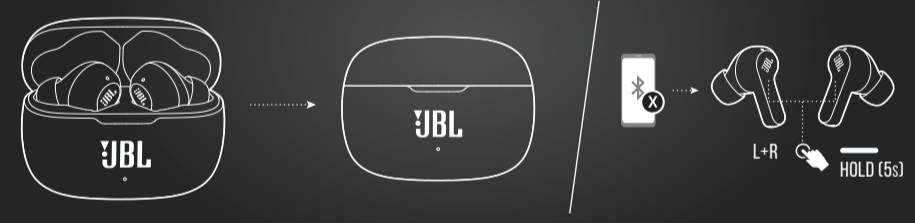
1. STEREO MODE



2. MONO MODE



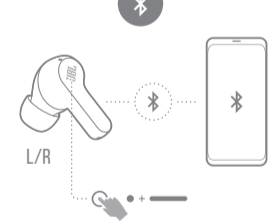
## POWER OFF



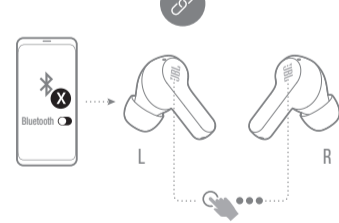
## MANUAL CONTROLS

- TAP × 1
- TAP × 2
- TAP × 3
- HOLD (5s)

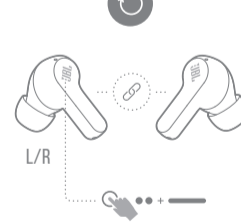
CONNECT TO A NEW BLUETOOTH DEVICE



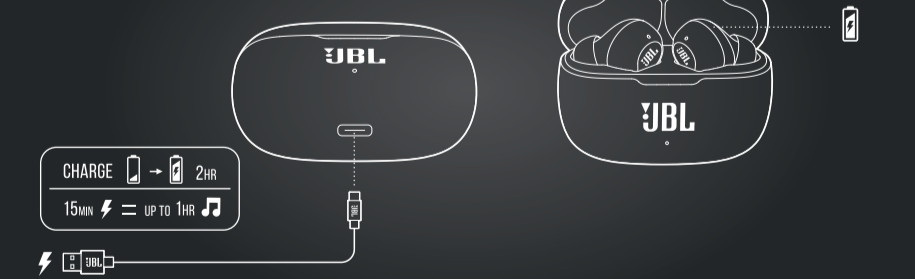
RECONNECT LEFT & RIGHT



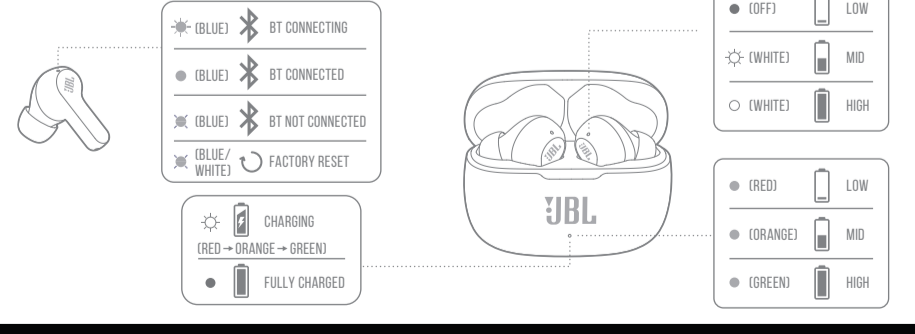
FACTORY RESET



## CHARGING



## LED BEHAVIORS



## TECH SPEC

**Model:** VIBE200TWS  
**Driver size:** 8 mm / 0.315" Dynamic Driver  
**Power supply:** 5V = 1A  
**Weight:** 47.5 g / 0.105 lbs  
**Headset battery type:** Lithium-ion Battery (48 mAh / 3.7V)  
**Charging case battery type:** Lithium-ion Battery (500 mAh / 3.7 V)  
**Charging time:** 2 hrs from empty  
**Music playtime with BT on:** up to 5 hrs  
**Frequency response:** 20 Hz – 20 kHz  
**Impedance:** 16 ohm  
**Sensitivity:** 108 dB SPL@1 kHz  
**Maximum SPL:** 93 dB  
**Microphone sensitivity:** -38 dBV/Pa @ 1 kHz  
**Bluetooth version:** 5.0  
**Bluetooth profile version:** A2DP V1.3, AVRCP V1.6, HFP V1.7  
**Bluetooth transmitter frequency range:** 2.400 GHz - 2.4835 GHz  
**Bluetooth transmitter power:** 12 dBm  
**Bluetooth transmitter modulation:** GFSK, m/4 QPSK, 8DPSK  
**Maximum operation temperature:** 45°C

