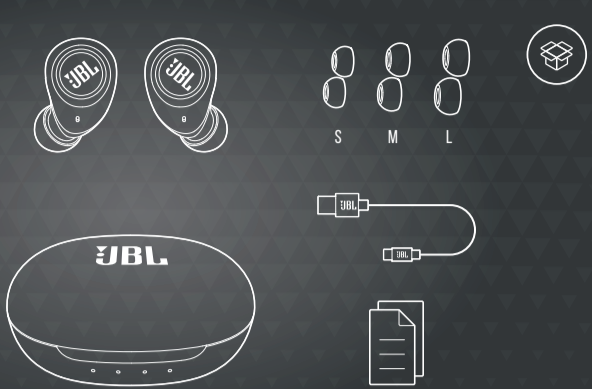


QUICK START GUIDE

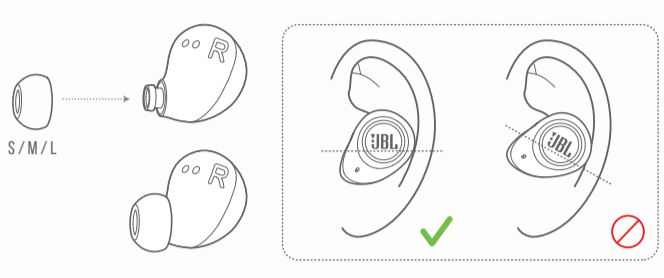
FREE II



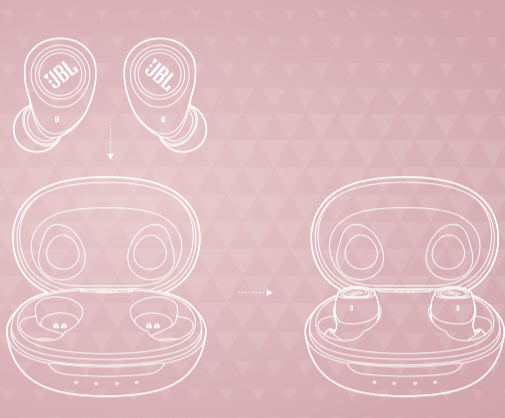
WHAT'S IN THE BOX



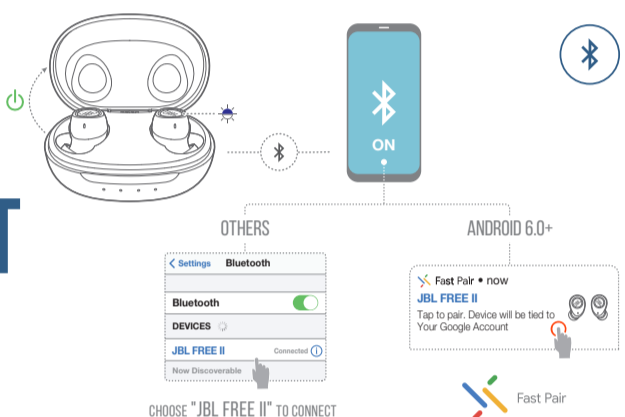
HOW TO WEAR



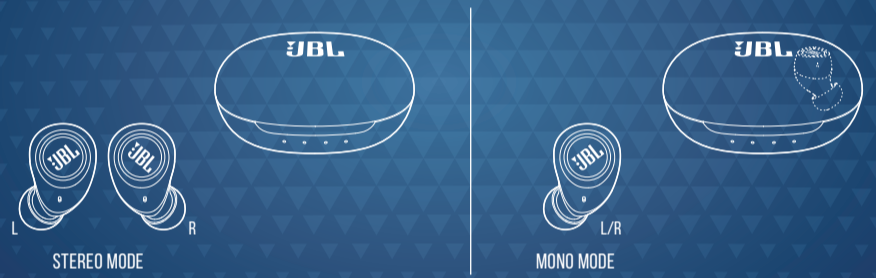
FIRST TIME USE



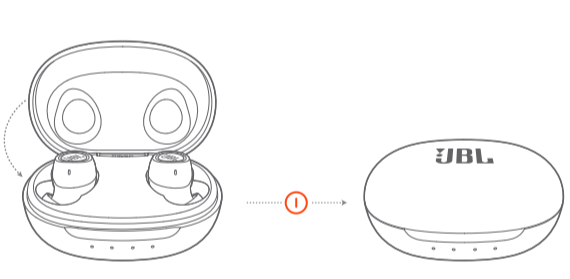
POWER ON & CONNECT



DUAL CONNECT



POWER OFF



MANUAL CONTROLS

POWER ON & CONNECT TO DEVICE

RECONNECTING LEFT & RIGHT

POWER ON

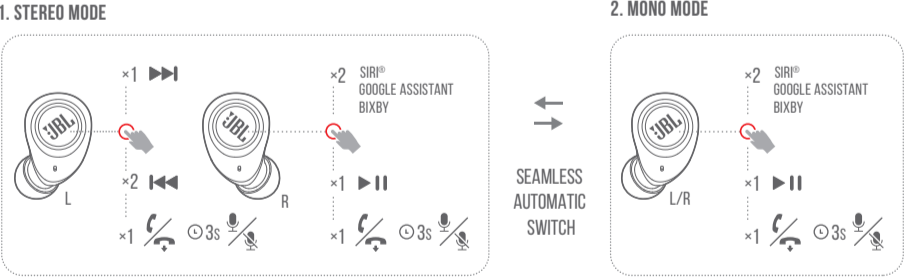
POWER OFF



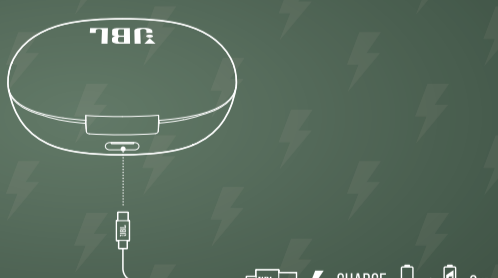
BUTTON COMMAND

1. STEREO MODE

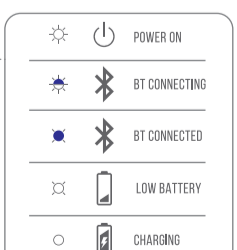
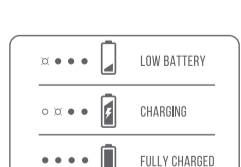
2. MONO MODE



CHARGING



LED BEHAVIORS



TECH SPEC

Model: FREE II
 Driver size: 5.6 mm / 0.22" Dynamic driver
 Power supply: 5V --- 1 A
 Weight: 61.6 g/0.135 lbs
 Earpiece: 4.8 g/0.011 lbs/pc (9.6 g /0.021 lbs combined)
 Charging case: 52 g/0.114 lbs
 Headset battery type: Lithium-ion Battery (55 mA / 3.7 V)
 Charging case battery type: Lithium-ion Battery (650 mA / 3.8 V)
 Charging time: < 2 hrs from empty
 Music playtime with BT on: up to 6 hrs
 Frequency response: 20 Hz – 20 kHz
 Impedance: 16 ohm
 Sensitivity: 100 dB SPL@1 kHz / 1 mW
 Maximum SPL: 95 dB
 Microphone sensitivity: -38 dBV@1 kHz / Pa
 Bluetooth version: 5.0
 Bluetooth profile version: A2DP 1.3, AVRCP 1.5, HFP 1.7
 Bluetooth transmitter frequency range: 2.4 GHz – 2.48 GHz
 Bluetooth transmitter power: < 12 dBm
 Bluetooth transmitter modulation: GFSK, n/4-DQPSK, 8DPSK
 Maximum operation temperature: 45 °C

