

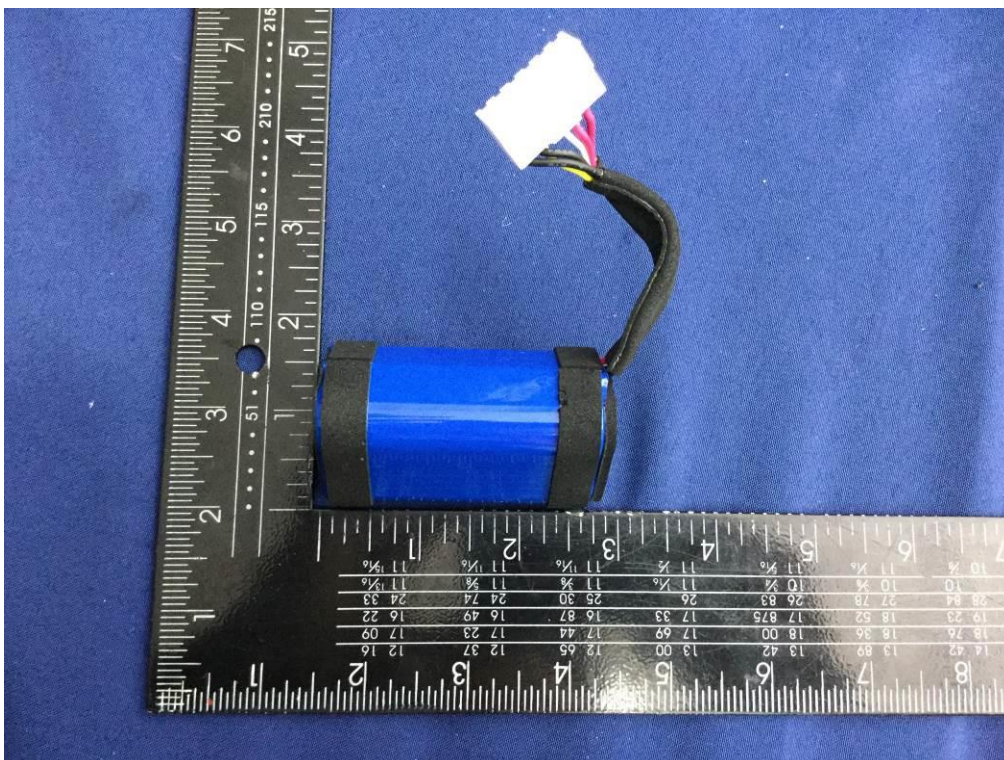
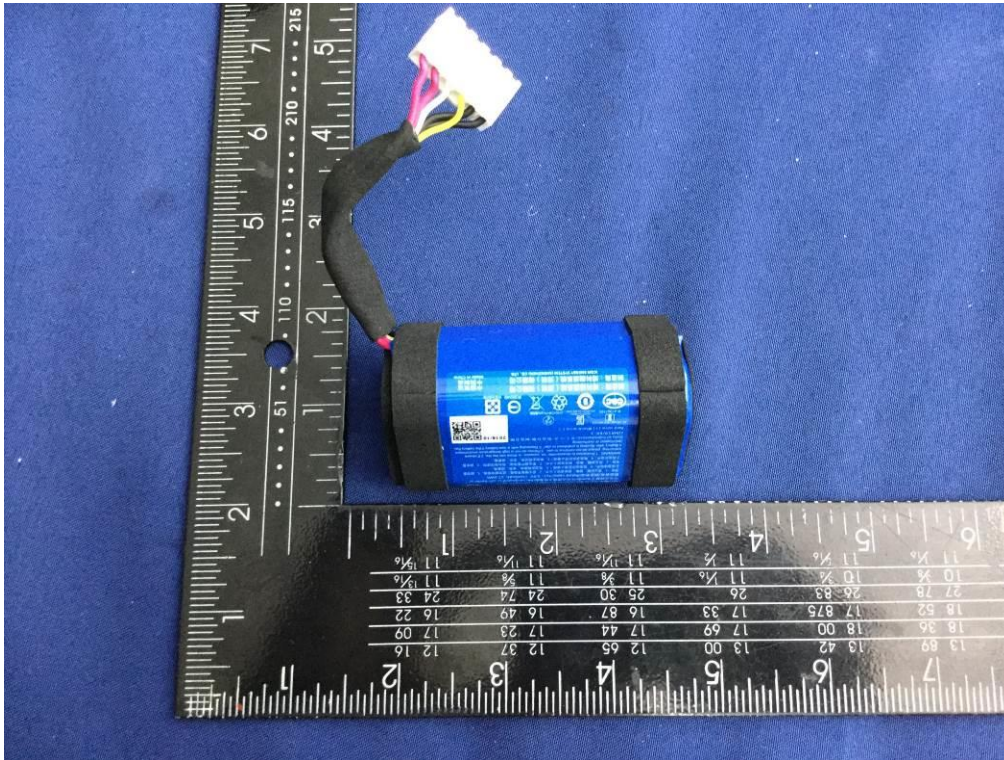
The difference between (original) and NEW for CHARGE4Q

Appearance: Added new batteries

Original:

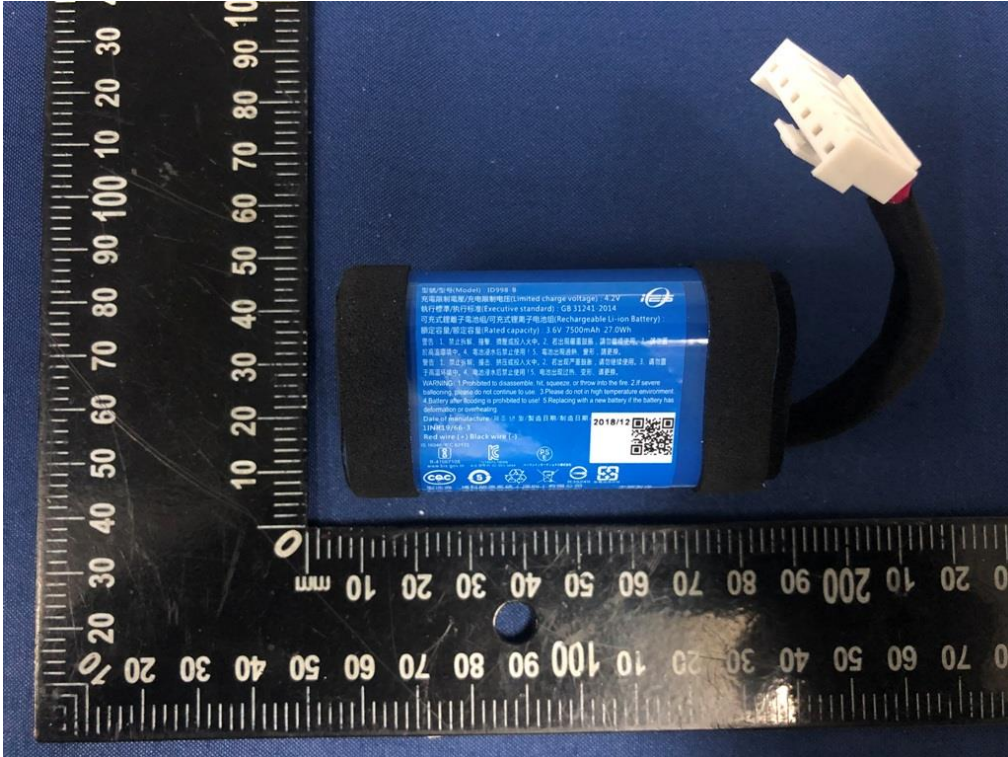
Factory 1:

Battery model: ID998





Battery model: ID998-B





Built-in Battery: IY1068:



型號/型号(Model) : IAA011NA

充電限制電壓/充電限制電壓(Limited charge voltage) : 4.2V

執行標準/执行标准(Executive standard) : GB 31241-2014

可充式鋰離子電池組/可充式锂离子电池组(Rechargeable Li-ion Battery) :

標稱電壓/标称电压(Nominal Voltage): 3.63V

額定容量/额定容量(Rated capacity) : 7500mAh 27.225Wh

警告 : 1、禁止拆解、撞擊、擠壓或投入火中。2、若出現嚴重鼓脹，請勿繼續使用。3、請勿置於高溫環境中。4、電池浸水後禁止使用！5、電池出現過熱、變形，請更換。

警告 : 1、禁止拆解、撞擊、擠壓或投入火中。2、若出現嚴重鼓脹，請勿繼續使用。3、請勿置於高溫環境中。4、電池浸水後禁止使用！5、電池出現過熱、變形，請更換。

WARNING: 1.Prohibited to disassemble, strike, squeeze the battery, or throw it into fire.
2.If the battery is seriously bulging,do not continue to use it. 3.Please do not use in high temperature environment. 4.Battery is prohibited to use after being soaked in water.
5.If the battery is overheated or deformed, please replace it.

Date of manufacture / 제조 년 월 / 製造日期 / 制造日期 :

2019/10



Red wire (+) Black wire (-)



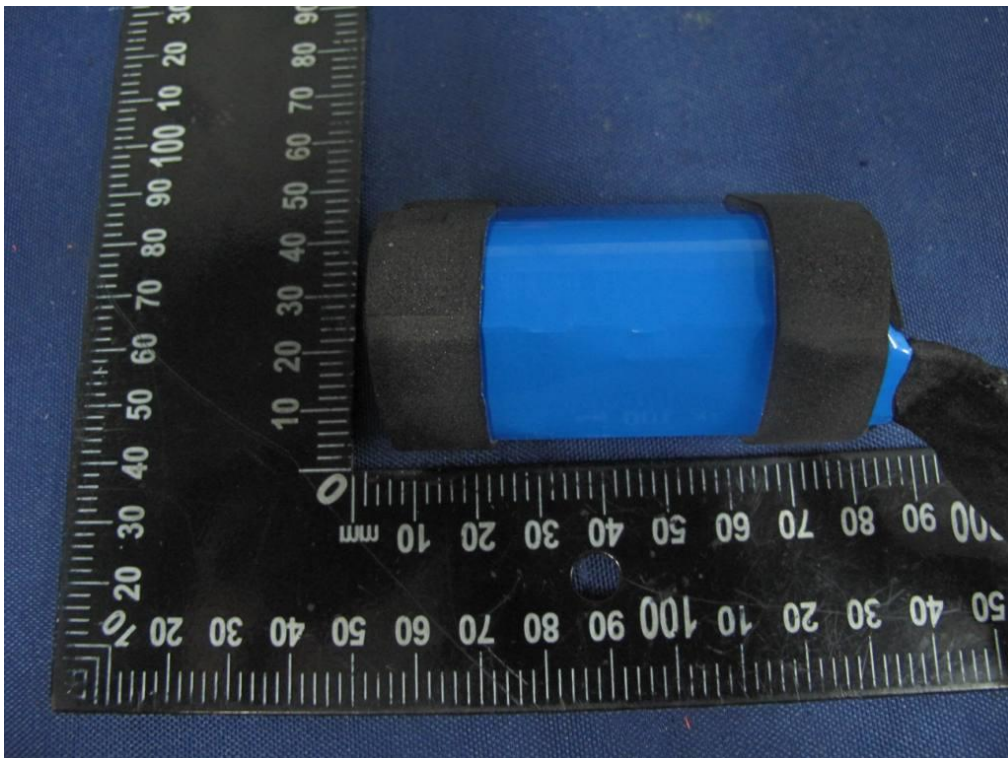
製造商 : 博科能源系統(深圳)有限公司

博科能源系統(深圳)有限公司

博科能源系統(深圳)有限公司

Factory 2:

Built-in Battery: SUN-INTE-118



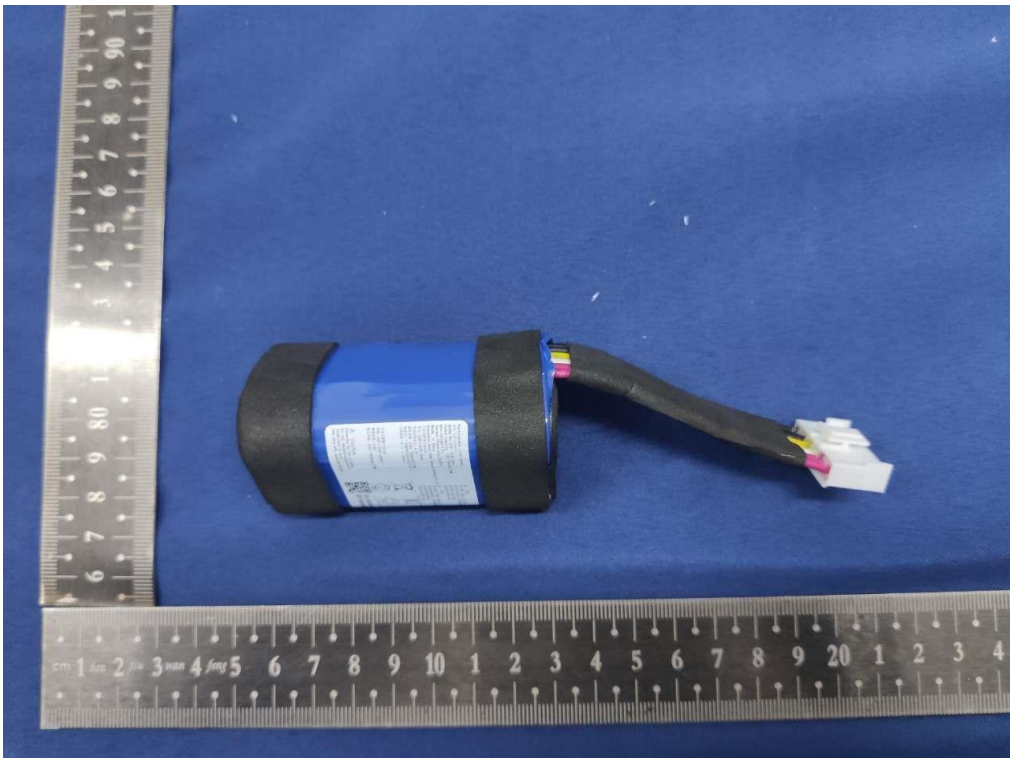


Built-in Battery: SUN-INTE-156:





Built-in Battery: GSP-1S3P-CH4A:





New:

Factory 2:

Battery: GSP-1S3P-CH4D:

