

# Appendix B

## Highest Test Plots

# Table of Contents

1. BT Head-worn 0mm SAR ..... 3

# 1. BT Head-worn 0mm SAR

Date: 13.05.2024

Test Laboratory: Guangdong Dongdian Testing Service Co., Ltd.

Q24022823-2E

DUT: BLUETOOTH HEADSET ;Model Number:ENDURANCE RACE 2 ; Serial: S24022823-016

Communication System: UID 0, Bluetooth (0); Communication System Band: Bluetooth, Frequency: 2402 MHz; Communication System PAR: 0 dB; PMF: 1.12202e-005

Medium parameters used (interpolated):  $f = 2402$  MHz,  $\sigma = 1.801$  S/m,  $\epsilon_r = 38.267$ ;  $\rho = 1000$  kg/m<sup>3</sup>

Phantom section: Flat Section

Measurement Standard: DASYS (IEEE/IEC/ANSI C63.19-2011)

DASY Configuration:

- Probe: EX3DV4 - SN3906; Com:F(7.95, 7.95, 7.95); Calibrated: 29.04.2024;
- Sensor-Surface: 1.4mm (Mechanical Surface Detection),  $z = 1.0, 31.0$
- Electronics: DAE4 Sn1366; Calibrated: 29.04.2024
- Phantom: ELI v5.0; Type: QDOVA002AA; Serial: TP-1197
- DASY52 52.8.8(1222); SEMCAD X 14.6.10(7331)

Configuration/L Top side BLE 1M 2402/Area Scan (6x6x1): Measurement grid:  $dx=10$ mm,  $dy=10$ mm

Info: Interpolated medium parameters used for SAR evaluation.

Maximum value of SAR (measured) = 0.148 W/kg

Configuration/L Top side BLE 1M 2402/Zoom Scan (7x7x7)/Cube 0: Measurement grid:  $dx=5$ mm,  $dy=5$ mm,  $dz=5$ mm

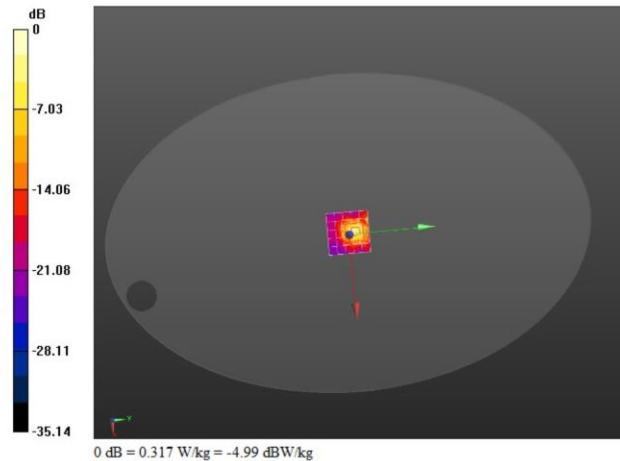
Reference Value = 7.271 V/m; Power Drift = -0.12 dB

Peak SAR (extrapolated) = 0.564 W/kg

SAR(1 g) = 0.110 W/kg; SAR(10 g) = 0.033 W/kg

Info: Interpolated medium parameters used for SAR evaluation.

Maximum value of SAR (measured) = 0.317 W/kg



Date: 13.05.2024

Test Laboratory: Guangdong Dongdian Testing Service Co., Ltd.

**Q24022823-2E****DUT: BLUETOOTH HEADSET ; Model Number: ENDURANCE RACE 2 ; Serial: S24022823-016**

Communication System: UID 0, Bluetooth (0); Communication System Band: Bluetooth, Frequency: 2441 MHz; Communication System PAR: 0 dB; PMF: 1.12202e-005

Medium parameters used (interpolated):  $f = 2440$  MHz,  $\sigma = 1.83$  S/m,  $\epsilon_r = 38.151$ ;  $\rho = 1000$  kg/m<sup>3</sup>

Phantom section: Flat Section

Measurement Standard: DASYS (IEEE/IEC/ANSI C63.19-2011)

DASY Configuration:

- Probe: EX3DV4 - SN3906; Com:F(7.95, 7.95, 7.95); Calibrated: 29.04.2024;
- Sensor-Surface: 1.4mm (Mechanical Surface Detection),  $z = 1.0, 31.0$
- Electronics: DAE4 Sn1366; Calibrated: 29.04.2024
- Phantom: ELI v5 0; Type: QDOVA002AA; Serial: TP-1197
- DASY52 52.8.8(1222); SEMCAD X 14.6.10(7331)

**Configuration/R Top side BLE 1M 2440/Area Scan (6x6x1):** Measurement grid:  $dx=10$ mm,  $dy=10$ mm

Info: Interpolated medium parameters used for SAR evaluation.

Maximum value of SAR (measured) = 0.169 W/kg

**Configuration/R Top side BLE 1M 2440/Zoom Scan (7x7x7)/Cube 0:** Measurement grid:  $dx=5$ mm,  $dy=5$ mm,  $dz=5$ mm

Reference Value = 4.340 V/m; Power Drift = 0.09 dB

Peak SAR (extrapolated) = 0.391 W/kg

SAR(1 g) = 0.083 W/kg; SAR(10 g) = 0.024 W/kg

Info: Interpolated medium parameters used for SAR evaluation.

Maximum value of SAR (measured) = 0.185 W/kg

