

2.4G WiFi 11b 2462MHz Top edge ant1 5mm

Measurement Report for Device, TOP, WLAN 2.4GHz, UID 10315 AAB, Channel 11 (2462.0MHz)

Device under Test Properties

Model, Manufacturer	Dimensions [mm]	IMEI	DUT Type
Device,	240.0 x 70.0 x 10.0		Phone

Exposure Conditions

Phantom TSL	Section,	Position, Distance [mm]	Test	Band	Group, UID	Frequency [MHz], Channel Number	Conversion Factor	TSL Conductivity [S/m]	TSL Permittivity
Flat, HSL		TOP, 5.00		WLAN 2.4GHz	WLAN, 10315-AAB	2462.0, 11	8.18	1.85	39.3

Hardware Setup

Phantom	TSL, Measured Date	Probe, Calibration Date	DAE, Calibration Date
ELI V8.0 (20deg probe tilt) - 2178	HSL600-10000 2022-Aug-31	Charge: xxxx, EX3DV4 - SN7733, 2022-08-02	DAE4 Sn1739, 2022-07-29

Scan Setup

	Area Scan	Zoom Scan
Grid Extents [mm]	100.0 x 280.0	30.0 x 30.0 x 30.0
Grid Steps [mm]	10.0 x 10.0	5.0 x 5.0 x 1.5
Sensor Surface [mm]	3.0	1.4
Graded Grid	Yes	Yes
Grading Ratio	1.5	1.5
MAIA	Y	N/A
Surface Detection	VMS + 6p	VMS + 6p
Scan Method	Measured	Measured

Measurement Results

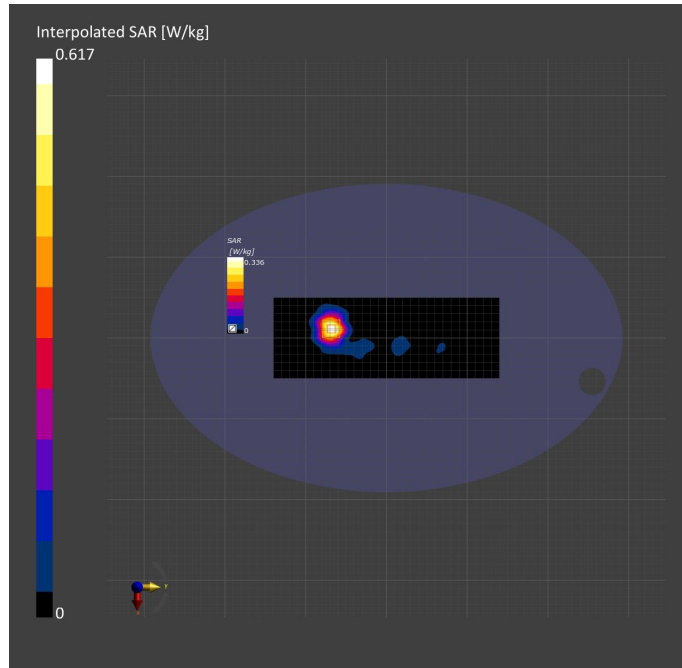
	Area Scan	Zoom Scan
Date	2022-08-31, 10:43	2022-08-31, 10:50
psSAR1g [W/kg]	0.308	0.310
psSAR10g [W/kg]	0.154	0.153
Power Drift [dB]	-0.02	-0.03
Power Scaling	Disabled	Disabled
Scaling Factor [dB]		
TSL Correction	No correction	No correction
M2/M1 [%]		79.9
Dist 3dB Peak [mm]		13.3

Warning(s) / Error(s)

Details	Area Scan	Zoom Scan
---------	-----------	-----------

Warning(s)

Error(s)



2.4G WiFi 11b 2437MHz Back Surface ant2 5mm

Measurement Report for Device, BACK, WLAN 2.4GHz, UID 10315 AAB, Channel 6 (2437.0MHz)

Device under Test Properties

Model, Manufacturer	Dimensions [mm]	IMEI	DUT Type
Device,	240.0 x 70.0 x 10.0		Phone

Exposure Conditions

Phantom TSL	Section, Position, Distance [mm]	Test Band	Group, UID	Frequency [MHz], Channel Number	Conversion Factor	TSL Conductivity [S/m]	TSL Permittivity
Flat, HSL	BACK, 5.00	WLAN 2.4GHz	WLAN, 10315-AAB	2437.0, 6	8.18	1.83	39.6

Hardware Setup

Phantom	TSL, Measured Date	Probe, Calibration Date	DAE, Calibration Date
ELI V8.0 (20deg probe tilt) - 2178	HSL600-10000 2022-Aug-31	Charge: xxxx, EX3DV4 - SN7733, 2022-08-02	DAE4 Sn1739, 2022-07-29

Scan Setup

	Area Scan	Zoom Scan
Grid Extents [mm]	100.0 x 280.0	30.0 x 30.0 x 30.0
Grid Steps [mm]	10.0 x 10.0	5.0 x 5.0 x 1.5
Sensor Surface [mm]	3.0	1.4
Graded Grid	Yes	Yes
Grading Ratio	1.5	1.5
MAIA	Y	N/A
Surface Detection	VMS + 6p	VMS + 6p
Scan Method	Measured	Measured

Measurement Results

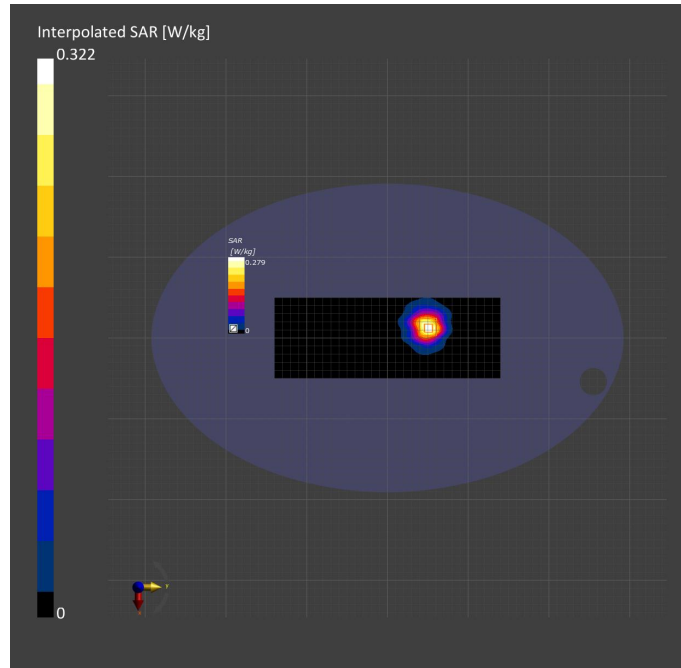
	Area Scan	Zoom Scan
Date	2022-09-02, 14:28	2022-09-02, 14:36
psSAR1g [W/kg]	0.254	0.260
psSAR10g [W/kg]	0.130	0.130
Power Drift [dB]	0.05	-0.03
Power Scaling	Disabled	Disabled
Scaling Factor [dB]		
TSL Correction	No correction	No correction
M2/M1 [%]		78.3
Dist 3dB Peak [mm]		13.6

Warning(s) / Error(s)

Details	Area Scan	Zoom Scan
---------	-----------	-----------

Warning(s)

Error(s)



5G WiFi 11A 5200MHz Top edge ant1 5mm

Measurement Report for Device, TOP-NII-1, U-NII-2A, UID 10317 AAD, Channel 40 (5200.0MHz)

Device under Test Properties

Model, Manufacturer	Dimensions [mm]	IMEI	DUT Type
Device,	240.0 x 70.0 x 10.0		Phone

Exposure Conditions

Phantom TSL	Section,	Position, Distance [mm]	Test Band	Group, UID	Frequency [MHz], Channel Number	Conversion Factor	TSL Conductivity [S/m]	TSL Permittivity
Flat, HSL		TOP, 5.00	U-NII-1, U-NII-2A	WLAN, 10317-AAD	5200.0, 40	5.92	4.73	36.1

Hardware Setup

Phantom	TSL, Measured Date	Probe, Calibration Date	DAE, Calibration Date
ELI V8.0 (20deg probe tilt) - 2178	HSL600-10000 2022-Aug-31	Charge: xxxx, EX3DV4 - SN7733, 2022-08-02	DAE4 Sn1739, 2022-07-29

Scan Setup

	Area Scan	Zoom Scan
Grid Extents [mm]	100.0 x 280.0	22.0 x 22.0 x 22.0
Grid Steps [mm]	10.0 x 10.0	4.0 x 4.0 x 1.4
Sensor Surface [mm]	3.0	1.4
Graded Grid	Yes	Yes
Grading Ratio	1.5	1.4
MAIA	Y	Y
Surface Detection	VMS + 6p	VMS + 6p
Scan Method	Measured	Measured

Measurement Results

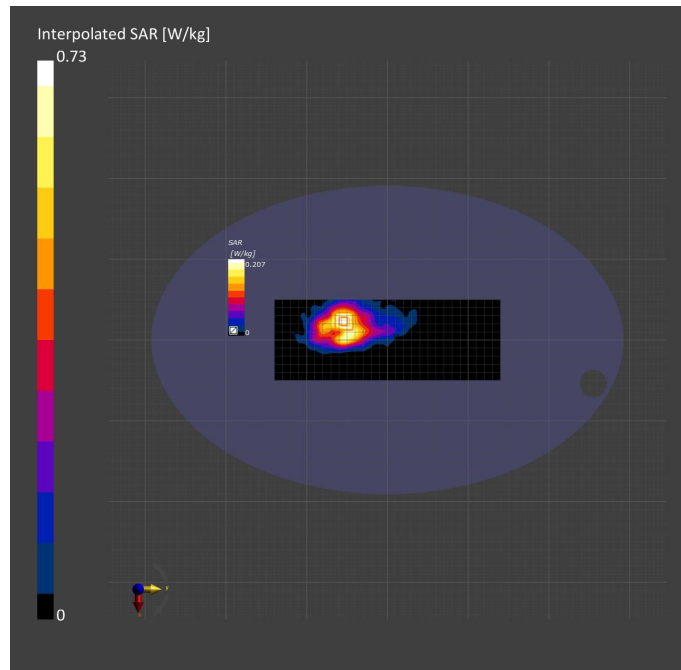
	Area Scan	Zoom Scan
Date	2022-08-31, 11:02	2022-08-31, 11:10
psSAR1g [W/kg]	0.212	0.218
psSAR10g [W/kg]	0.092	0.089
Power Drift [dB]	-0.02	-0.04
Power Scaling	Disabled	Disabled
Scaling Factor [dB]		
TSL Correction	No correction	No correction
M2/M1 [%]		63.2
Dist 3dB Peak [mm]		16.0

Warning(s) / Error(s)

Details	Area Scan	Zoom Scan
---------	-----------	-----------

Warning(s)

Error(s)



5G WiFi 11A 5500MHz Top edge ant1 5mm

Measurement Report for Device, TOP-NII-2C < 5.65 GHz, UID 10317 AAD, Channel 100 (5500.0MHz)

Device under Test Properties

Model, Manufacturer	Dimensions [mm]	IMEI	DUT Type
Device,	240.0 x 70.0 x 10.0		Phone

Exposure Conditions

Phantom TSL	Section, Position, Distance [mm]	Test Band	Group, UID	Frequency [MHz], Channel Number	Conversion Factor	TSL Conductivity [S/m]	TSL Permittivity
Flat, HSL	TOP, 5.00	U-NII-2C < 5.65 GHz	WLAN, 10317-AAD	5500.0, 100	5.24	4.95	36.1

Hardware Setup

Phantom	TSL, Measured Date	Probe, Calibration Date	DAE, Calibration Date
ELI V8.0 (20deg probe tilt) - 2178	HSL600-10000 2022-Aug-31	Charge: xxxx, EX3DV4 - SN7733, 2022-08-02	DAE4 Sn1739, 2022-07-29

Scan Setup

	Area Scan	Zoom Scan
Grid Extents [mm]	100.0 x 280.0	22.0 x 22.0 x 22.0
Grid Steps [mm]	10.0 x 10.0	4.0 x 4.0 x 1.4
Sensor Surface [mm]	3.0	1.4
Graded Grid	Yes	Yes
Grading Ratio	1.5	1.4
MAIA	Y	Y
Surface Detection	VMS + 6p	VMS + 6p
Scan Method	Measured	Measured

Measurement Results

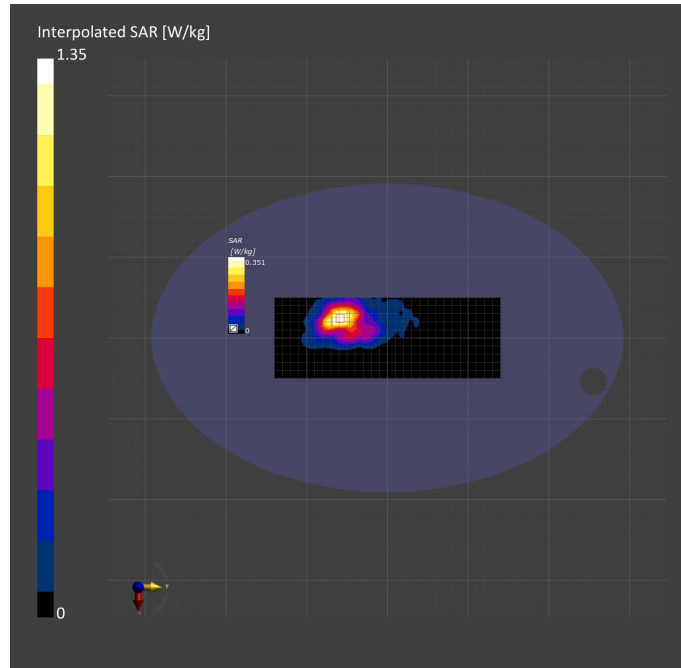
	Area Scan	Zoom Scan
Date	2022-08-31, 11:30	2022-08-31, 11:38
psSAR1g [W/kg]	0.362	0.377
psSAR10g [W/kg]	0.151	0.150
Power Drift [dB]	0.01	-0.04
Power Scaling	Disabled	Disabled
Scaling Factor [dB]		
TSL Correction	No correction	No correction
M2/M1 [%]		61.0
Dist 3dB Peak [mm]		14.3

Warning(s) / Error(s)

Details	Area Scan	Zoom Scan
---------	-----------	-----------

Warning(s)

Error(s)



5G WiFi 11N40 5755MHz Top edge ant1 5mm

Measurement Report for Device, TOP, U-NII-2C, U-NII-3, UID 10425 AAC, Channel 151 (5755.0MHz)

Device under Test Properties

Model, Manufacturer	Dimensions [mm]	IMEI	DUT Type
Device,	240.0 x 70.0 x 10.0		Phone

Exposure Conditions

Phantom TSL	Section,	Position, Distance [mm]	Test	Band	Group, UID	Frequency [MHz], Channel Number	Conversion Factor	TSL Conductivity [S/m]	TSL Permittivity
Flat, HSL		TOP, 5.00		U-NII-2C, U-NII-3	WLAN, 10425-AAC	5755.0, 151	5.15	5.16	36.1

Hardware Setup

Phantom	TSL, Measured Date	Probe, Calibration Date	DAE, Calibration Date
ELI V8.0 (20deg probe tilt) - 2178	HSL600-10000 2022-Aug-31	Charge: xxxx, EX3DV4 - SN7733, 2022-08-02	DAE4 Sn1739, 2022-07-29

Scan Setup

	Area Scan	Zoom Scan
Grid Extents [mm]	100.0 x 280.0	22.0 x 22.0 x 22.0
Grid Steps [mm]	10.0 x 10.0	4.0 x 4.0 x 1.4
Sensor Surface [mm]	3.0	1.4
Graded Grid	Yes	Yes
Grading Ratio	1.5	1.4
MAIA	Y	Y
Surface Detection	VMS + 6p	VMS + 6p
Scan Method	Measured	Measured

Measurement Results

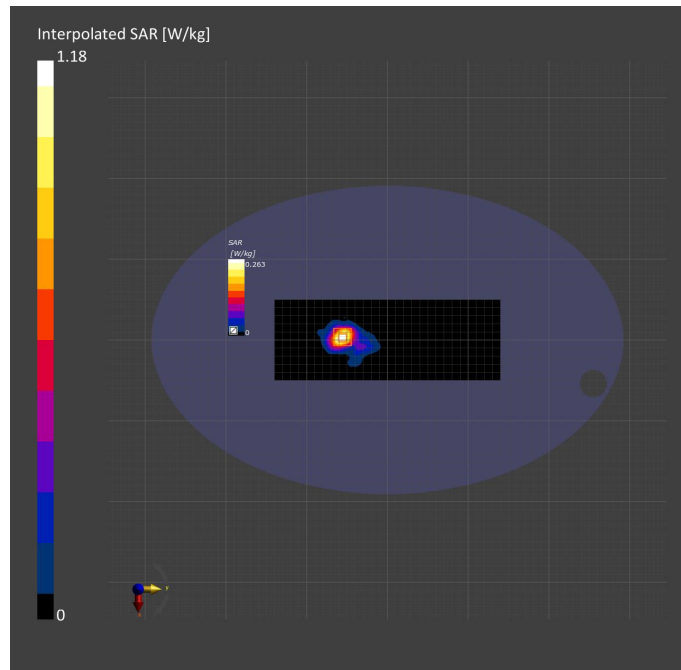
	Area Scan	Zoom Scan
Date	2022-09-07, 10:19	2022-09-07, 10:27
psSAR1g [W/kg]	0.265	0.288
psSAR10g [W/kg]	0.096	0.096
Power Drift [dB]	-0.07	-0.12
Power Scaling	Disabled	Disabled
Scaling Factor [dB]		
TSL Correction	No correction	No correction
M2/M1 [%]		57.5
Dist 3dB Peak [mm]		8.9

Warning(s) / Error(s)

Details	Area Scan	Zoom Scan
---------	-----------	-----------

Warning(s)

Error(s)



5G WiFi 11A 5180MHz Back Surface ant2 5mm

Measurement Report for Device, BACK, U-NII-1, U-NII-2A, UID 10317 AAD, Channel 36 (5180.0MHz)

Device under Test Properties

Model, Manufacturer	Dimensions [mm]	IMEI	DUT Type
Device,	240.0 x 70.0 x 10.0		Phone

Exposure Conditions

Phantom TSL	Section, Position, Distance [mm]	Test Band	Group, UID	Frequency [MHz], Channel Number	Conversion Factor	TSL Conductivity [S/m]	TSL Permittivity
Flat, HSL	BACK, 5.00	U-NII-1, U-NII-2A	WLAN, 10317-AAD	5180.0, 36	5.92	4.72	36.5

Hardware Setup

Phantom	TSL, Measured Date	Probe, Calibration Date	DAE, Calibration Date
ELI V8.0 (20deg probe tilt) - 2178	HSL600-10000 Charge: xxxx, 2022-Aug-31	EX3DV4 - SN7733, 2022-08-02	DAE4 Sn1739, 2022-07-29

Scan Setup

	Area Scan	Zoom Scan
Grid Extents [mm]	100.0 x 280.0	22.0 x 22.0 x 22.0
Grid Steps [mm]	10.0 x 10.0	4.0 x 4.0 x 1.4
Sensor Surface [mm]	3.0	1.4
Graded Grid	Yes	Yes
Grading Ratio	1.5	1.4
MAIA	Y	N/A
Surface Detection	VMS + 6p	VMS + 6p
Scan Method	Measured	Measured

Measurement Results

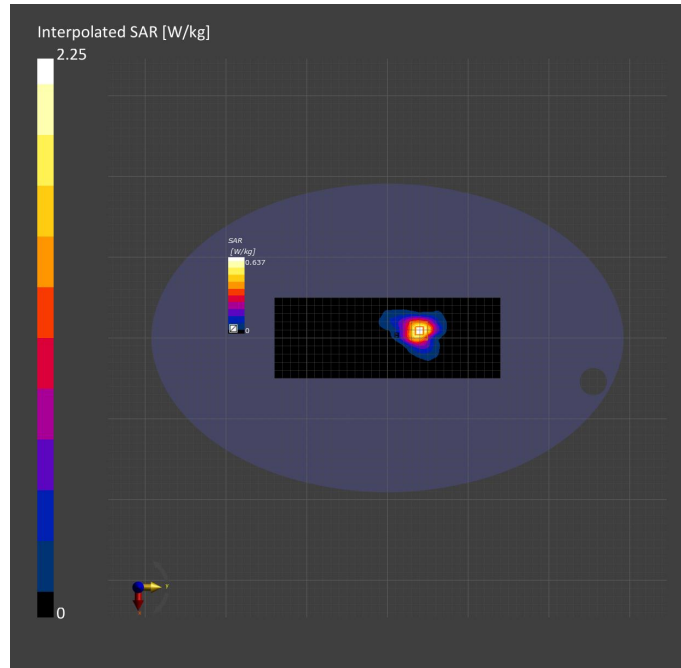
	Area Scan	Zoom Scan
Date	2022-09-02, 15:18	2022-09-02, 15:27
psSAR1g [W/kg]	0.625	0.648
psSAR10g [W/kg]	0.246	0.248
Power Drift [dB]	0.07	-0.01
Power Scaling	Disabled	Disabled
Scaling Factor [dB]		
TSL Correction	No correction	No correction
M2/M1 [%]		62.6
Dist 3dB Peak [mm]		11.5

Warning(s) / Error(s)

Details	Area Scan	Zoom Scan
---------	-----------	-----------

Warning(s)

Error(s)



5G WiFi 11A 5580MHz Back Surface ant2 5mm

Measurement Report for Device, BACK, U-NII-2C < 5.65 GHz, UID 10317 AAD, Channel 116 (5580.0MHz)

Device under Test Properties

Model, Manufacturer	Dimensions [mm]	IMEI	DUT Type
Device,	240.0 x 70.0 x 10.0		Phone

Exposure Conditions

Phantom TSL	Section, Position, Distance [mm]	Test Band	Group, UID	Frequency [MHz], Channel Number	Conversion Factor	TSL Conductivity [S/m]	TSL Permittivity
Flat, HSL	BACK, 5.00	U-NII-2C < 5.65 GHz	WLAN, 10317-AAD	5580.0, 116	5.08	4.95	36.0

Hardware Setup

Phantom	TSL, Measured Date	Probe, Calibration Date	DAE, Calibration Date
ELI V8.0 (20deg probe tilt) - 2178	HSL600-10000 2022-Aug-31	Charge: xxxx, EX3DV4 - SN7733, 2022-08-02	DAE4 Sn1739, 2022-07-29

Scan Setup

	Area Scan	Zoom Scan
Grid Extents [mm]	100.0 x 280.0	22.0 x 22.0 x 22.0
Grid Steps [mm]	10.0 x 10.0	4.0 x 4.0 x 1.4
Sensor Surface [mm]	3.0	1.4
Graded Grid	Yes	Yes
Grading Ratio	1.5	1.4
MAIA	Y	Y
Surface Detection	VMS + 6p	VMS + 6p
Scan Method	Measured	Measured

Measurement Results

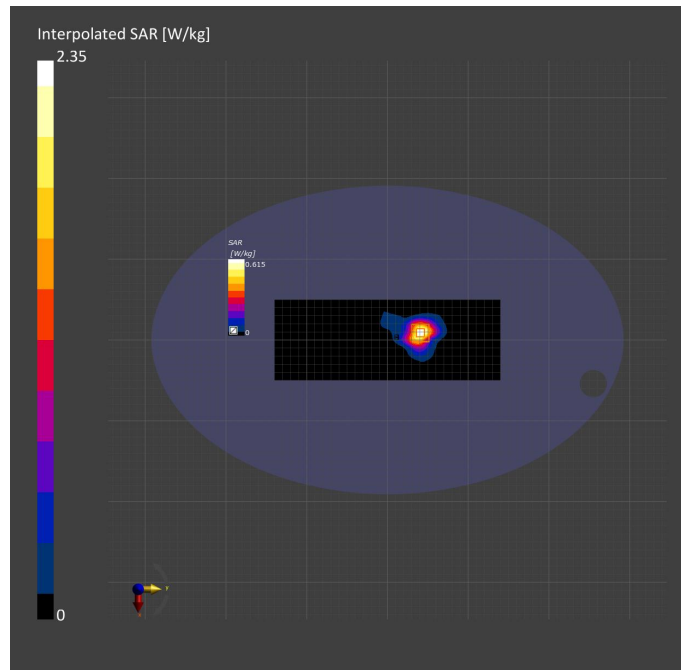
	Area Scan	Zoom Scan
Date	2022-09-02, 15:41	2022-09-02, 15:49
psSAR1g [W/kg]	0.615	0.623
psSAR10g [W/kg]	0.232	0.230
Power Drift [dB]	-0.01	-0.00
Power Scaling	Disabled	Disabled
Scaling Factor [dB]		
TSL Correction	No correction	No correction
M2/M1 [%]		59.8
Dist 3dB Peak [mm]		11.3

Warning(s) / Error(s)

Details	Area Scan	Zoom Scan
---------	-----------	-----------

Warning(s)

Error(s)



5G WiFi 11N40 5755MHz Back Surface ant2 5mm

Measurement Report for Device, BACK, U-NII-2C, U-NII-3, UID 10425 AAC, Channel 151 (5755.0MHz)

Device under Test Properties

Model, Manufacturer	Dimensions [mm]	IMEI	DUT Type
Device,	240.0 x 70.0 x 10.0		Phone

Exposure Conditions

Phantom TSL	Section, Position, Distance [mm]	Test Band	Group, UID	Frequency [MHz], Channel Number	Conversion Factor	TSL Conductivity [S/m]	TSL Permittivity
Flat, HSL	BACK, 5.00	U-NII-2C, U-NII-3	WLAN, 10425-AAC	5755.0, 151	5.16	5.16	36.1

Hardware Setup

Phantom	TSL, Measured Date	Probe, Calibration Date	DAE, Calibration Date
ELI V8.0 (20deg probe tilt) - 2178	HSL600-10000 2022-Aug-31	Charge: xxxx, EX3DV4 - SN7733, 2022-08-02	DAE4 Sn1739, 2022-07-29

Scan Setup

	Area Scan	Zoom Scan
Grid Extents [mm]	100.0 x 280.0	22.0 x 22.0 x 22.0
Grid Steps [mm]	10.0 x 10.0	4.0 x 4.0 x 1.4
Sensor Surface [mm]	3.0	1.4
Graded Grid	Yes	Yes
Grading Ratio	1.5	1.4
MAIA	Y	Y
Surface Detection	VMS + 6p	VMS + 6p
Scan Method	Measured	Measured

Measurement Results

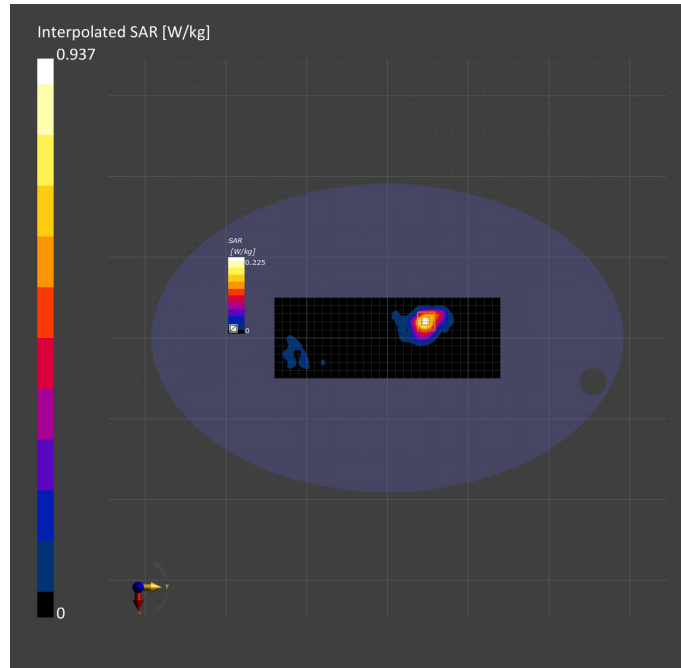
	Area Scan	Zoom Scan
Date	2022-09-07, 10:52	2022-09-07, 11:00
psSAR1g [W/kg]	0.224	0.230
psSAR10g [W/kg]	0.083	0.080
Power Drift [dB]	0.07	-0.04
Power Scaling	Disabled	Disabled
Scaling Factor [dB]		
TSL Correction	No correction	No correction
M2/M1 [%]		56.6
Dist 3dB Peak [mm]		10.2

Warning(s) / Error(s)

Details	Area Scan	Zoom Scan
---------	-----------	-----------

Warning(s)

Error(s)



BT 3DH5 2480MHz Front Surface ant2 5mm

Measurement Report for Device, FRONT, ISM 2.4 GHz Band, UID 10038 CAA, Channel 78 (2480.0MHz)

Device under Test Properties

Model, Manufacturer	Dimensions [mm]	IMEI	DUT Type
Device,	240.0 x 70.0 x 10.0		Phone

Exposure Conditions

Phantom TSL	Section,	Position, Distance [mm]	Test	Band	Group, UID	Frequency [MHz], Channel Number	Conversion Factor	TSL Conductivity [S/m]	TSL Permittivity
Flat, HSL		FRONT, 5.00		ISM 2.4 GHz Band	Bluetooth, 10038-CAA	2480.0, 78	8.18	1.87	39.4

Hardware Setup

Phantom	TSL, Measured Date	Probe, Calibration Date	DAE, Calibration Date
ELI V8.0 (20deg probe tilt) - 2178	HSL600-10000 2022-Aug-31	Charge: xxxx, EX3DV4 - SN7733, 2022-08-02	DAE4 Sn1739, 2022-07-29

Scan Setup

	Area Scan	Zoom Scan
Grid Extents [mm]	100.0 x 280.0	30.0 x 30.0 x 30.0
Grid Steps [mm]	10.0 x 10.0	5.0 x 5.0 x 1.5
Sensor Surface [mm]	3.0	1.4
Graded Grid	Yes	Yes
Grading Ratio	1.5	1.5
MAIA	Y	Y
Surface Detection	VMS + 6p	VMS + 6p
Scan Method	Measured	Measured

Measurement Results

	Area Scan	Zoom Scan
Date	2022-09-02, 17:25	2022-09-02, 17:33
psSAR1g [W/kg]	0.011	0.011
psSAR10g [W/kg]	0.004	0.003
Power Drift [dB]	0.11	0.01
Power Scaling	Disabled	Disabled
Scaling Factor [dB]		
TSL Correction	No correction	No correction
M2/M1 [%]		89.2
Dist 3dB Peak [mm]		> 15.0

Warning(s) / Error(s)

Details	Area Scan	Zoom Scan
Warning(s)		Power drift exceeds warning threshold.
Error(s)		

