

Appendix A

Detailed System Check Results

1. System Performance Check

System Performance Check 2450 MHz Head
--

Test Laboratory: SGS-SAR Lab

System Performance Check 2450MHz Head**DUT: D2450V2; Type: Dipole; Serial: 733**

Communication System: UID 0, CW; Frequency: 2450 MHz; Duty Cycle: 1:1

Medium: HSL2450; Medium parameters used: $f = 2450$ MHz; $\sigma = 1.75$ S/m; $\epsilon_r = 40.201$; $\rho = 1000$ kg/m³

Phantom section: Flat Section

DASY 5 Configuration:

- Probe: EX3DV4 - SN7636; ConvF(8.05, 8.05, 8.05); Calibrated: 2023/6/5
- Sensor-Surface: 1.4mm (Mechanical Surface Detection)
- Electronics: DAE4 Sn1663; Calibrated: 2023/3/27
- Phantom: SAM 3; Type: SAM Twin; Serial: 2031
- DASY52 52.10.4(1527); SEMCAD X 14.6.14(7483)

Configuration/d=10mm, Pin=250mW/Area Scan (9x10x1): Measurement grid: dx=12mm, dy=12mm

Maximum value of SAR (measured) = 19.8 W/kg

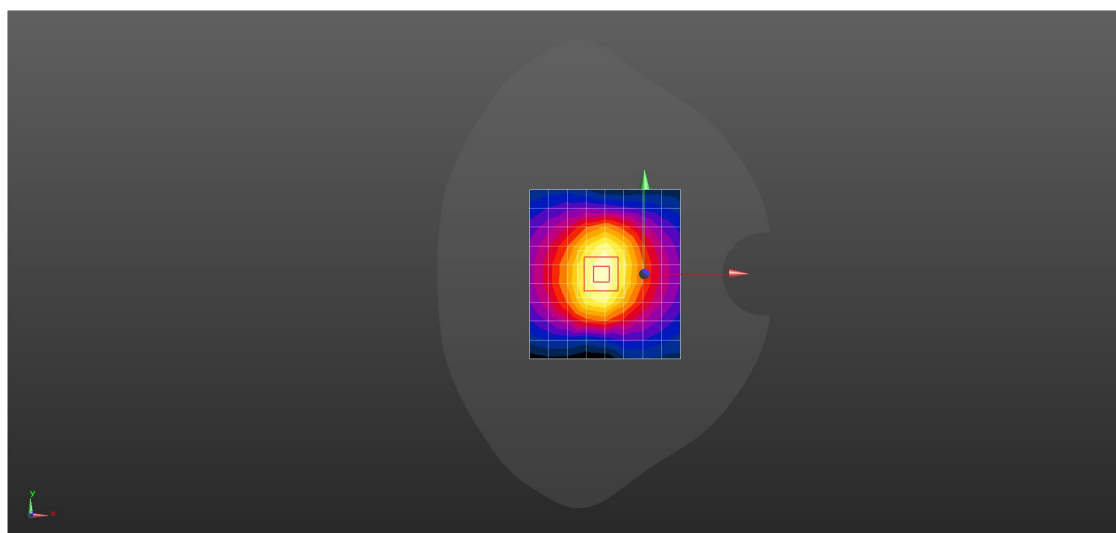
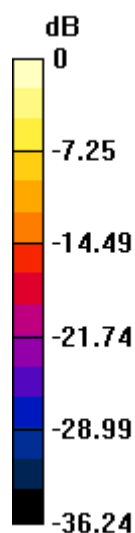
Configuration/d=10mm, Pin=250mW/Zoom Scan (7x7x7)/Cube 0: Measurement grid: dx=5mm, dy=5mm, dz=5mm

Reference Value = 91.86 V/m; Power Drift = 0.11 dB

Peak SAR (extrapolated) = 27.3 W/kg

SAR(1 g) = 13.3 W/kg; SAR(10 g) = 6.15 W/kg

Maximum value of SAR (measured) = 22.2 W/kg



0 dB = 19.8 W/kg = 12.97 dBW/kg