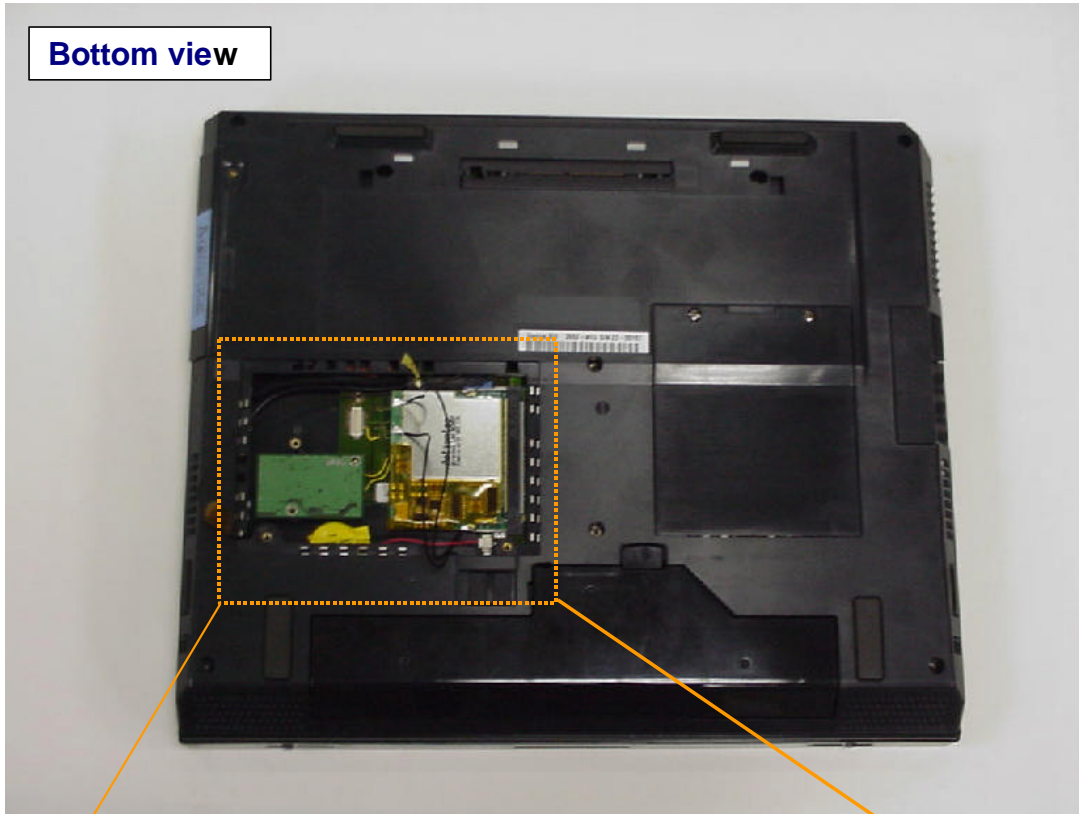
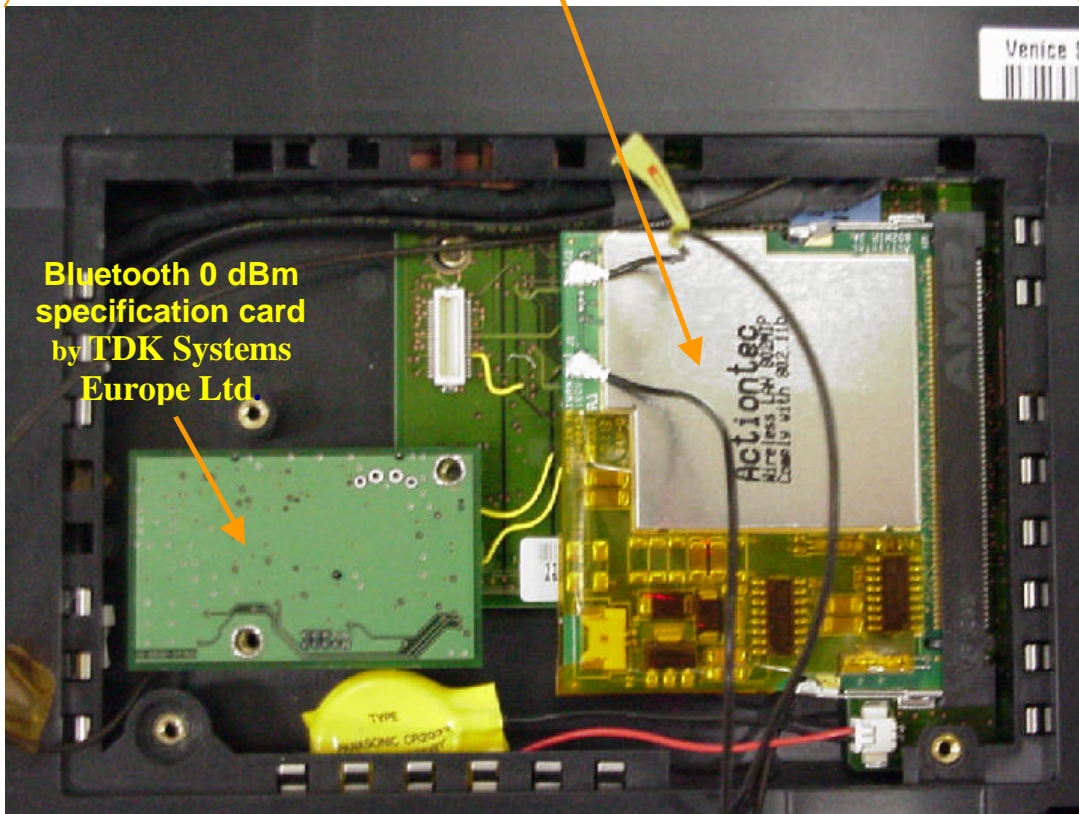
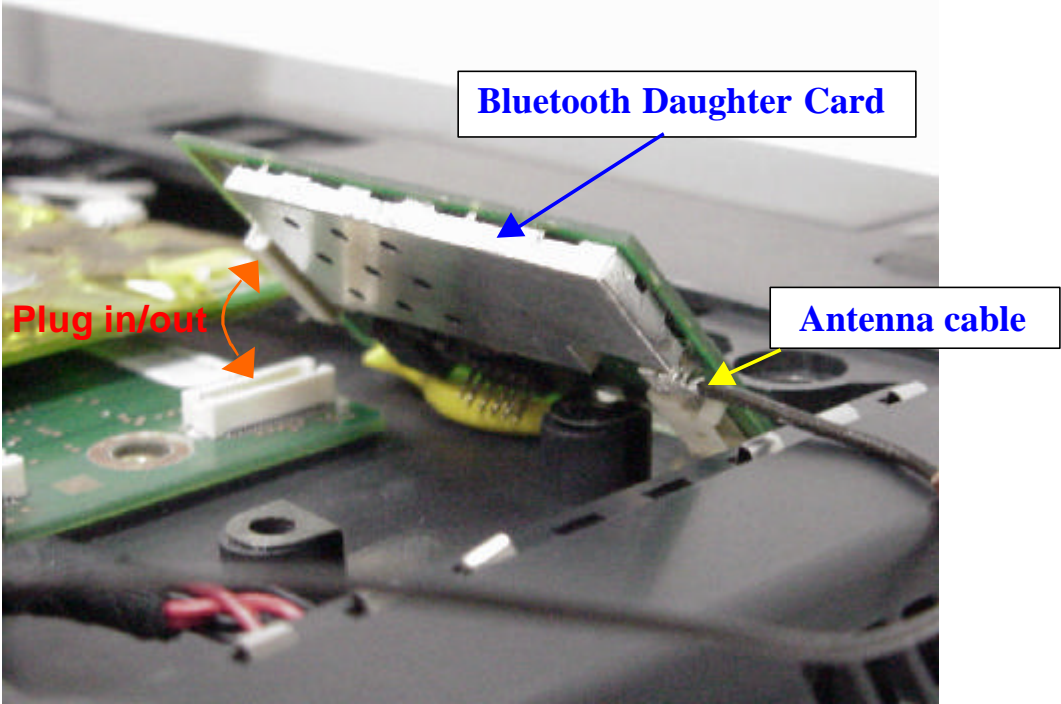
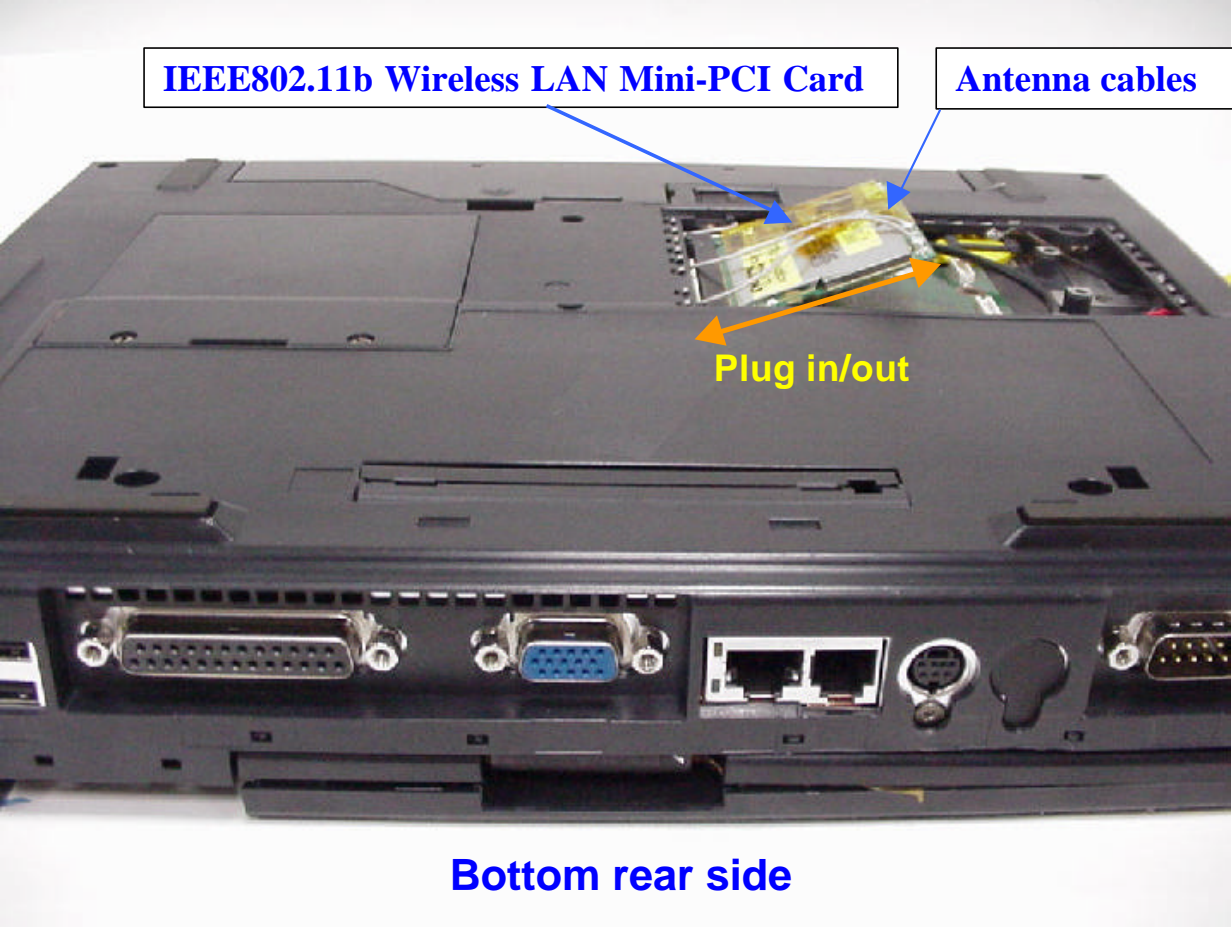


Internal Photos

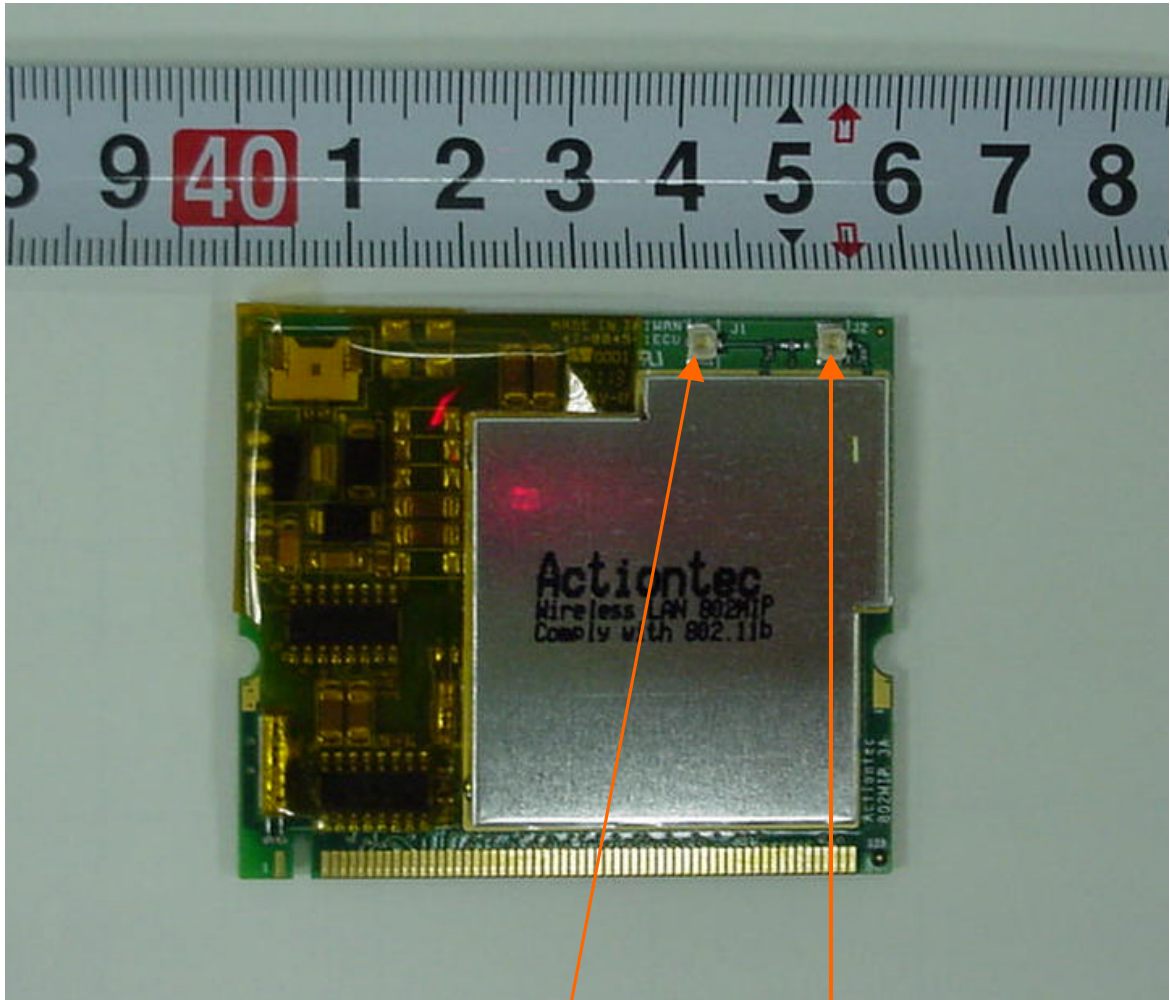


**IEEE802.11b Wireless LAN Mini-PCI card
by Actiontec Electronics Inc.**





IEEE802.11b Wireless LAN Mini-PCL Adapter

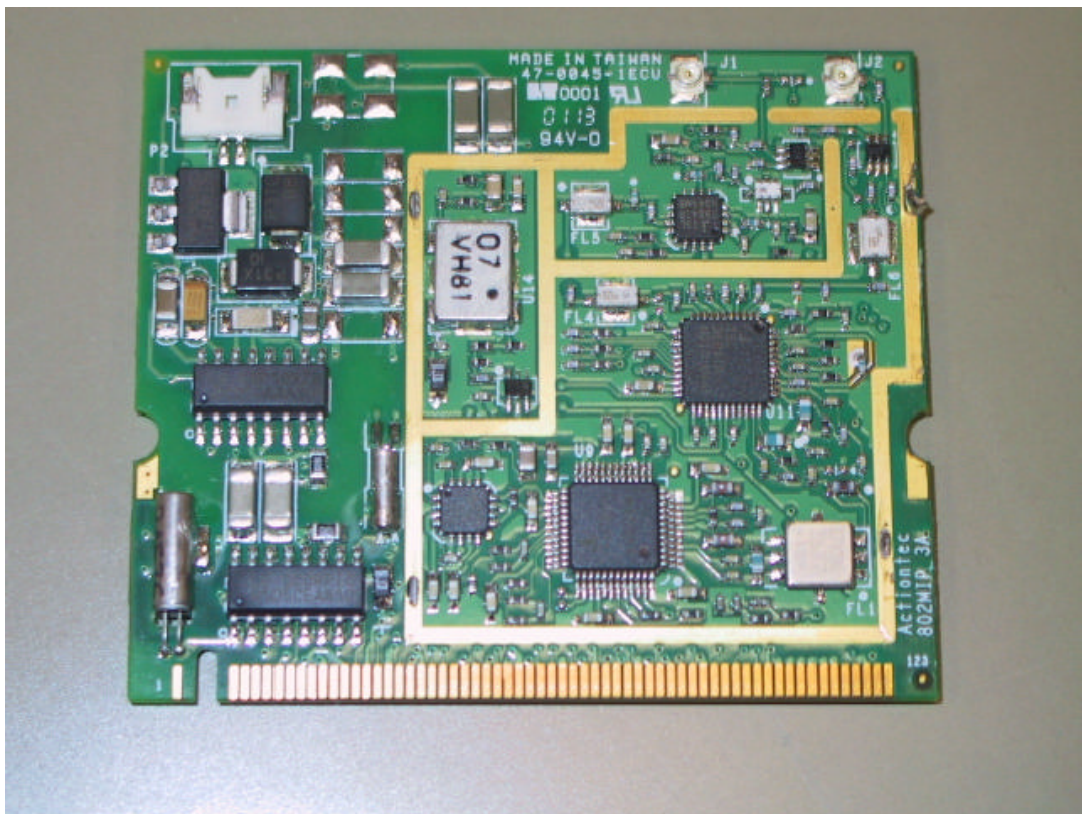


Antenna terminals

To left side antenna
Tx/Rx switching

To Right side antenna
Rx only

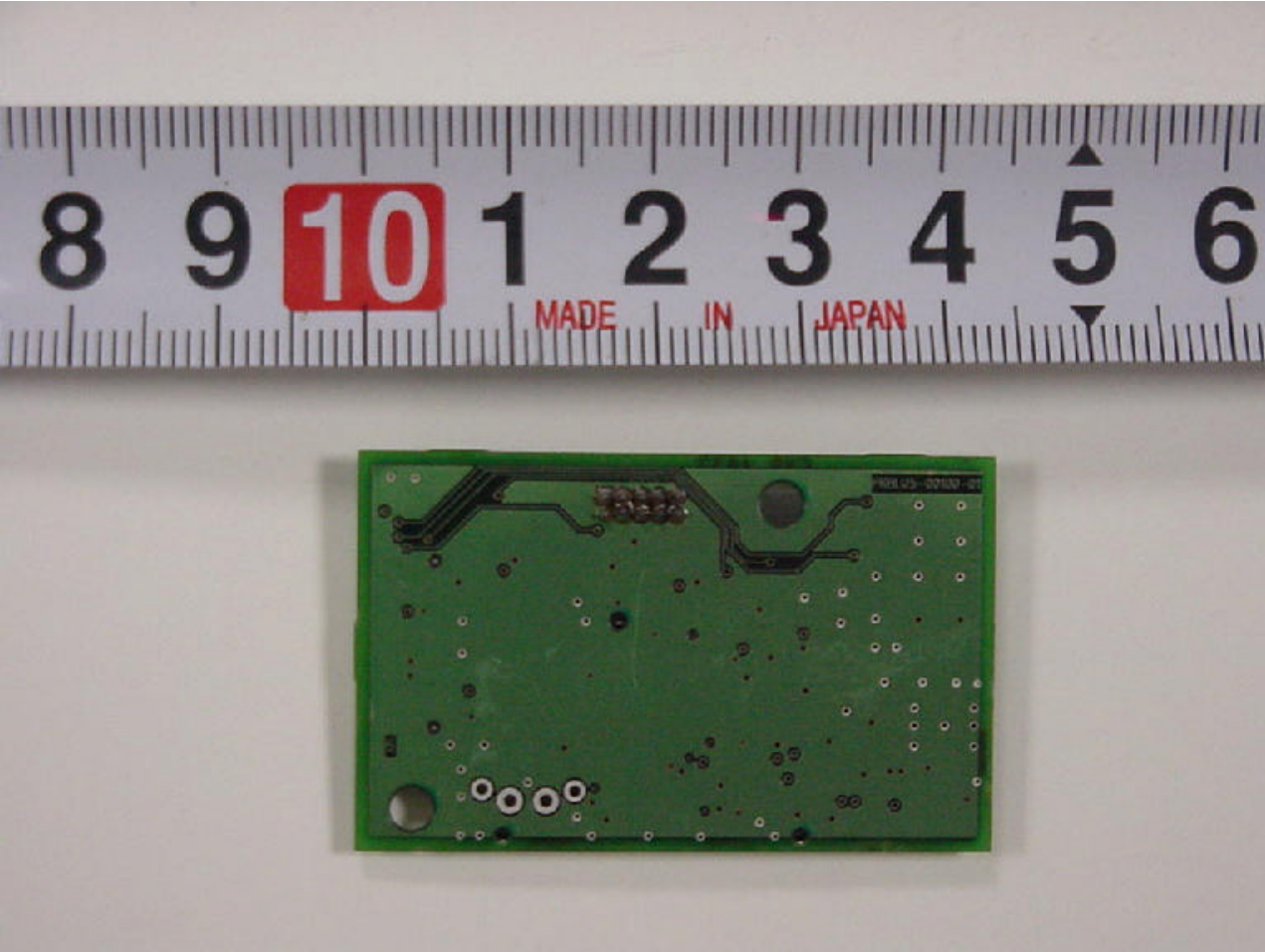
IEEE802.11b Wireless LAN Mini-PCI Adapter (Top side)



IEEE802.11b Wireless LAN Mini-PCI Adapter (Back side)

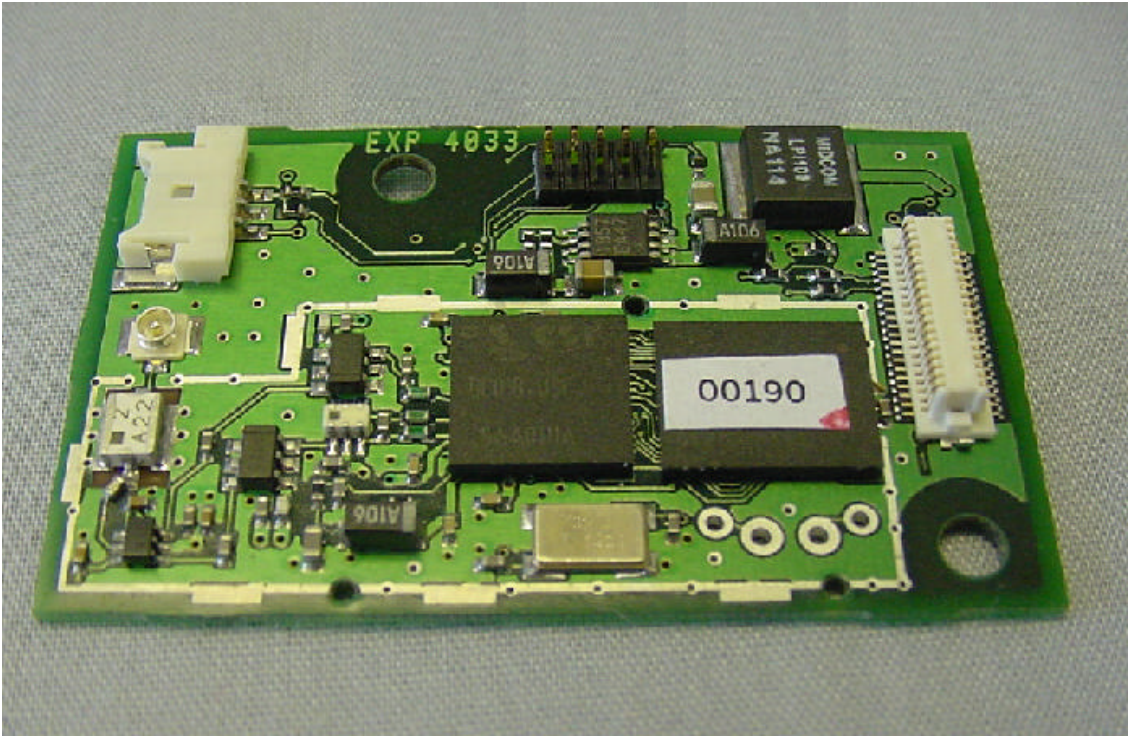
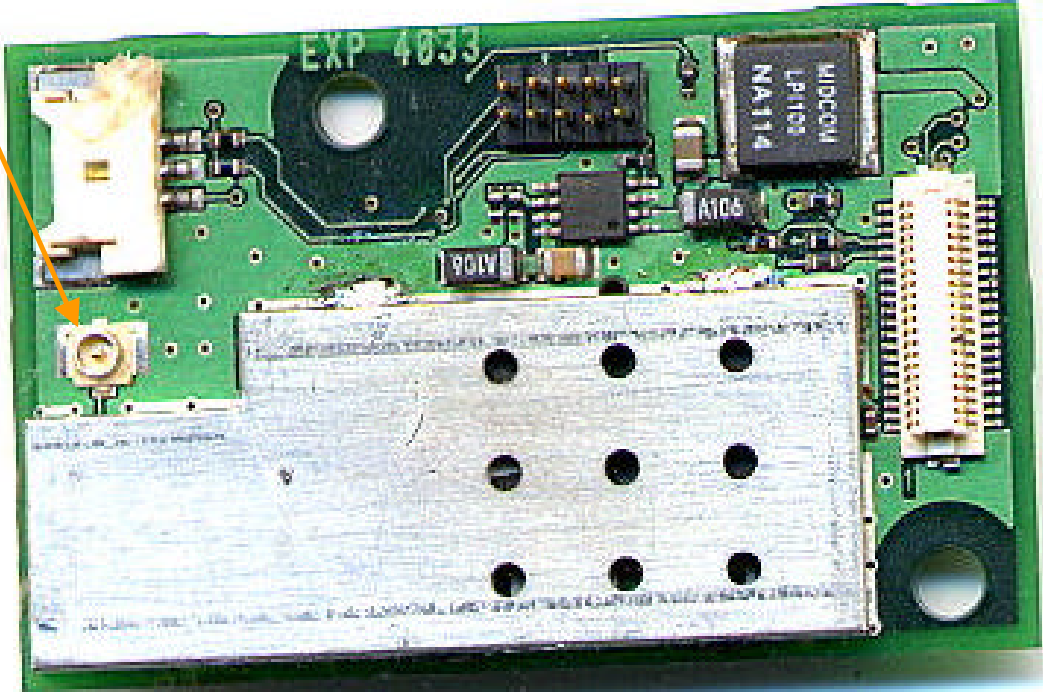


Bluetooth Daughter Card (Top side)



Bluetooth Daughter Card (Back side)

Antenna cable terminal



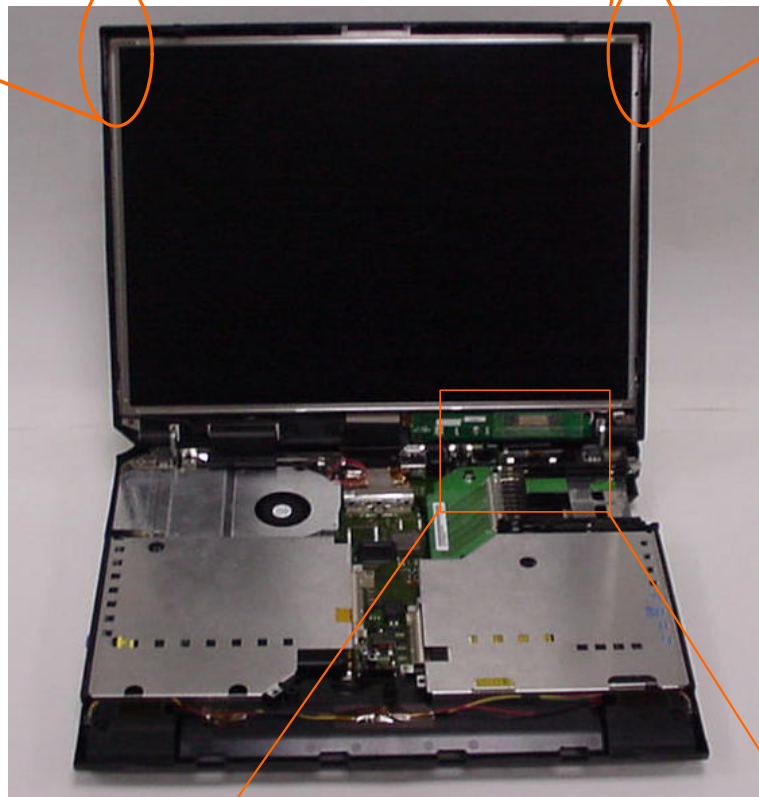
Antenna locations



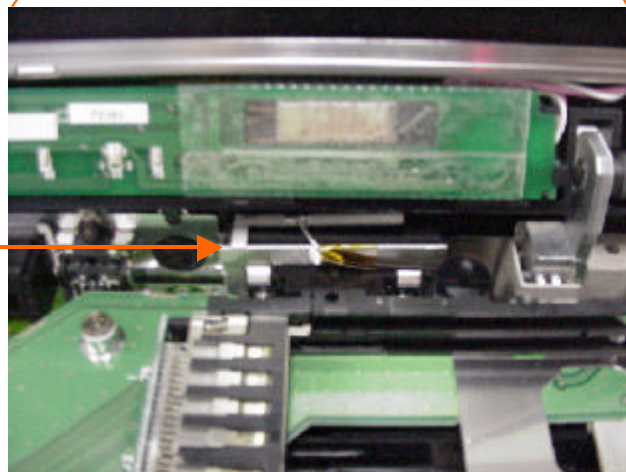
**IEEE802.11b
Wireless LAN
Left antenna
Inverted-F type
Tx/Rx switching**



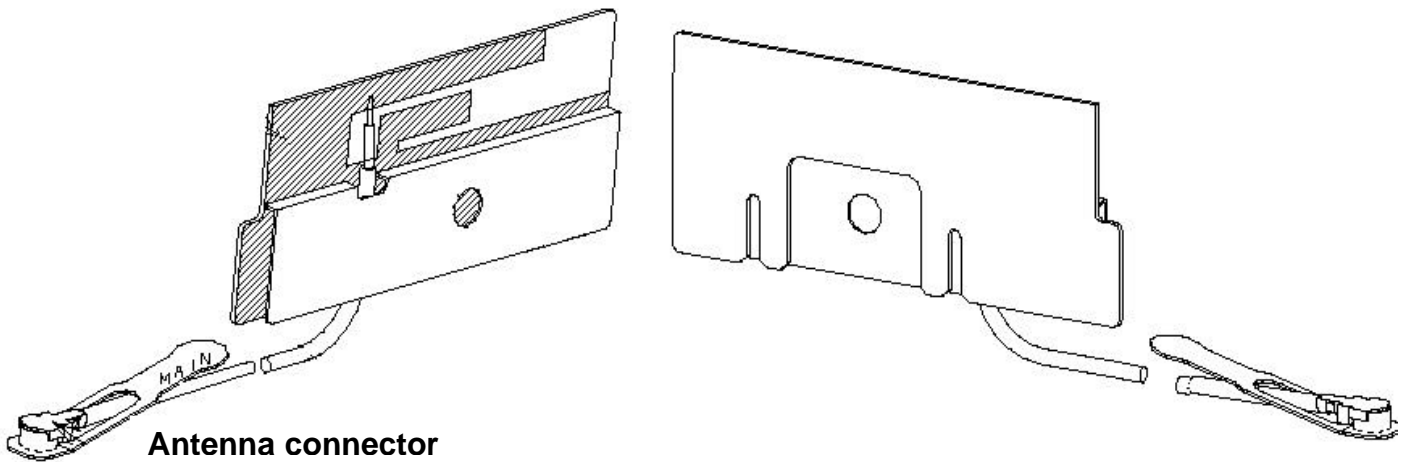
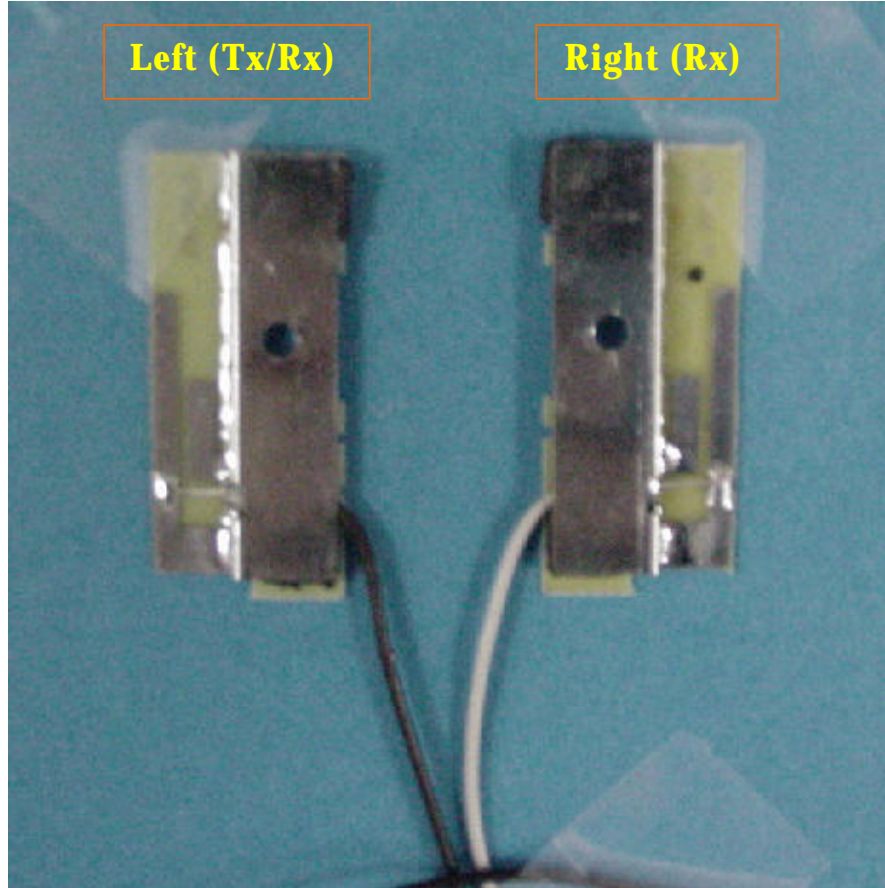
**IEEE802.11b
Wireless LAN
Right antenna
Inverted-F type
Rx only**



**Bluetooth Antenna (Tx/Rx)
(Inverted F type Antenna)**



IEEE802.11b Wireless LAN Antenna (Inverted F type Antenna and Cable)



Left antenna (Tx/Rx switch) : P/N: 27L0654 Cable : 760 mm
Right antenna (Rx only) : P/N: 27L0653 Cable : 1010 mm

Bluetooth Antenna (Inverted F type Antenna and Cable)

IBM P/N: 27L0648 (Tx / Rx)

