

Host Unit Information of ThinkPad X30 Series

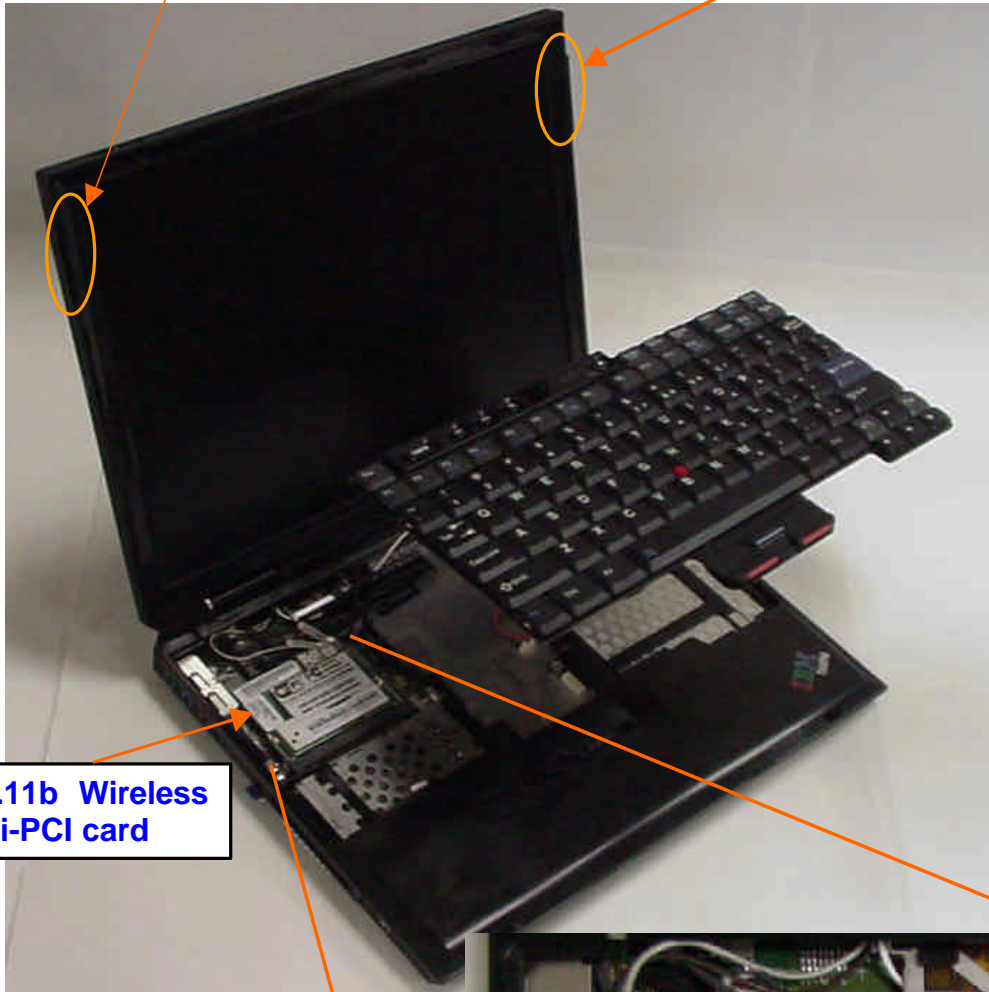
- **Host PC Information**
- **Host PC Labeling**
- **Antenna Information**

Host PC Information

The two inverted F-figure type antennas are built in the left and right sides of LCD panel. Those diversity antennas are not used simultaneously. The one of the antennas is selected automatically or manually to have a good quality automatically to have a good quality of radiocommunication.

Wireless LAN,
Main antenna

Wireless LAN,
Auxiliary antenna



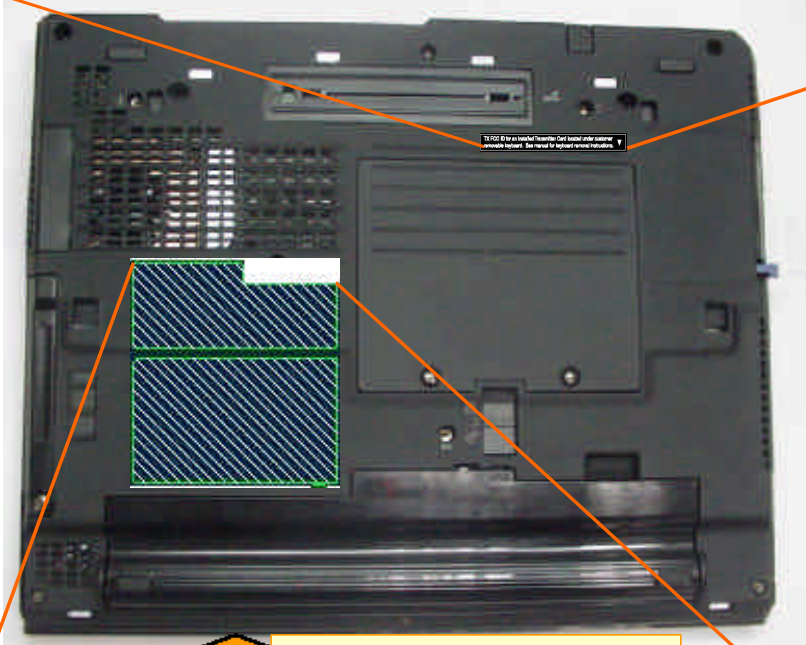
IEEE802.11b Wireless
LAN Mini-PCI card

The FCC ID and IC's Certification
Number is visible when the key board
is removed.










Host PC Labeling

TX FCC ID for an installed Transmitter Card located under customer removable keyboard. See manual for keyboard removal instructions.



Bottom view, Rear side

	Type 2672 16V --- 3.5A
Marca Registrada ©Registered Trademark of International Business Machines Corporation COPYRIGHTED CODE AND PARTS CONTAINED HEREIN. ©COPYRIGHT 1981, 2002 IBM CORP. Manufactured by IBM Made in Mexico 	This Product contains a Lithium Ion Battery, Lithium Battery and Cathode Fluorescent Lamp which contains mercury. Please refer to User Manual or follow Local Ordinances or Regulations for Disposal of this machine.
 Tested To Comply With FCC Standards FOR HOME OR OFFICE USE CANADA ICES/IMB-003 Class/Classe B	802.11b MAC Address AUSTRALIA WARNING: ONLY EQUIPMENT THAT HAS A TELECOMMUNICATIONS COMPLIANCE LABEL MAY BE CONNECTED TO THE HEADSET PORT. Apparatus Claims of U.S. Patent Nos. 4,631,603; 4,577,216; 4,819,088 and 4,807,083 licenced for limited viewing uses only.    

802.3 MAC Address

Antenna Information

1. Antenna Specification

Transmission Antenna assembly overview

Designator (Parts Number)	Manufacture	Antenna type	Cable type and length	Gain (dBi) Note 1)
LCD left antenna 46L4677	IBM Japan Ltd.	Inverted F type Antenna	coax 380mm	1.42 dBi (peak)
LCD right antenna 46L4676			coax 520mm	1.24 dBi (peak)

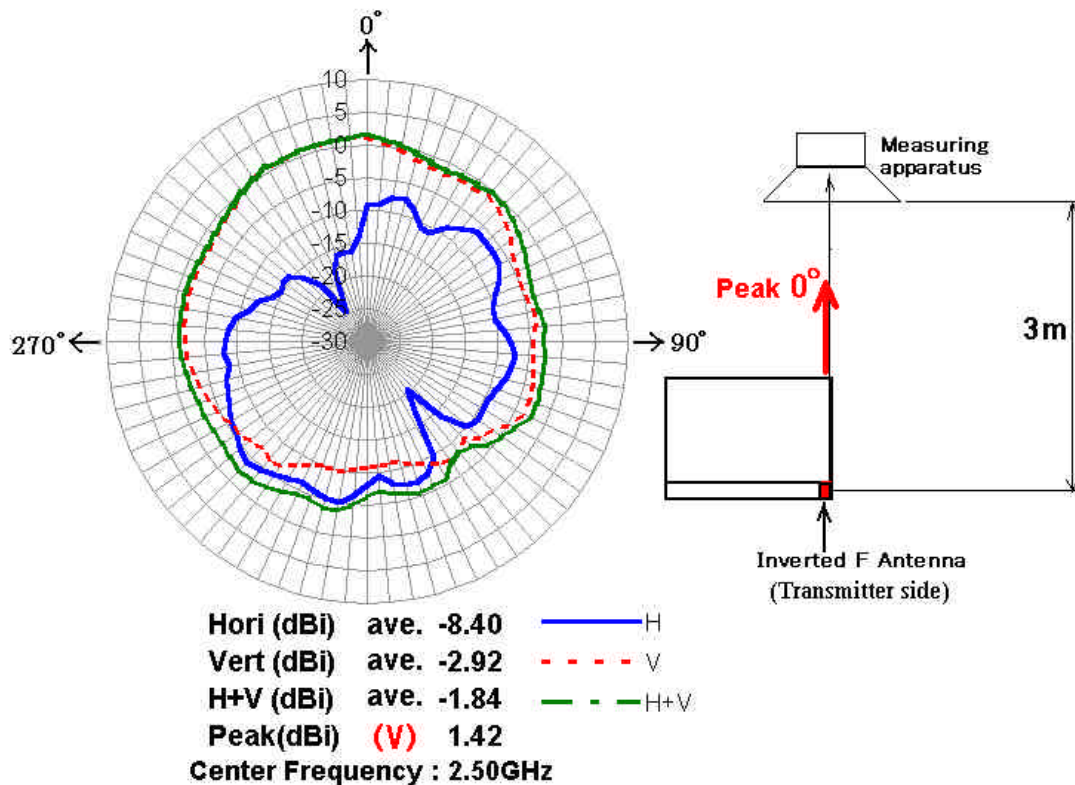
Notes:

1a. Includes all cable losses

1b. Antenna type should be Omni Directional and have gain of 3.0 dBi or less regarding the IBM internal specification.

2. Radiation characteristic of antenna

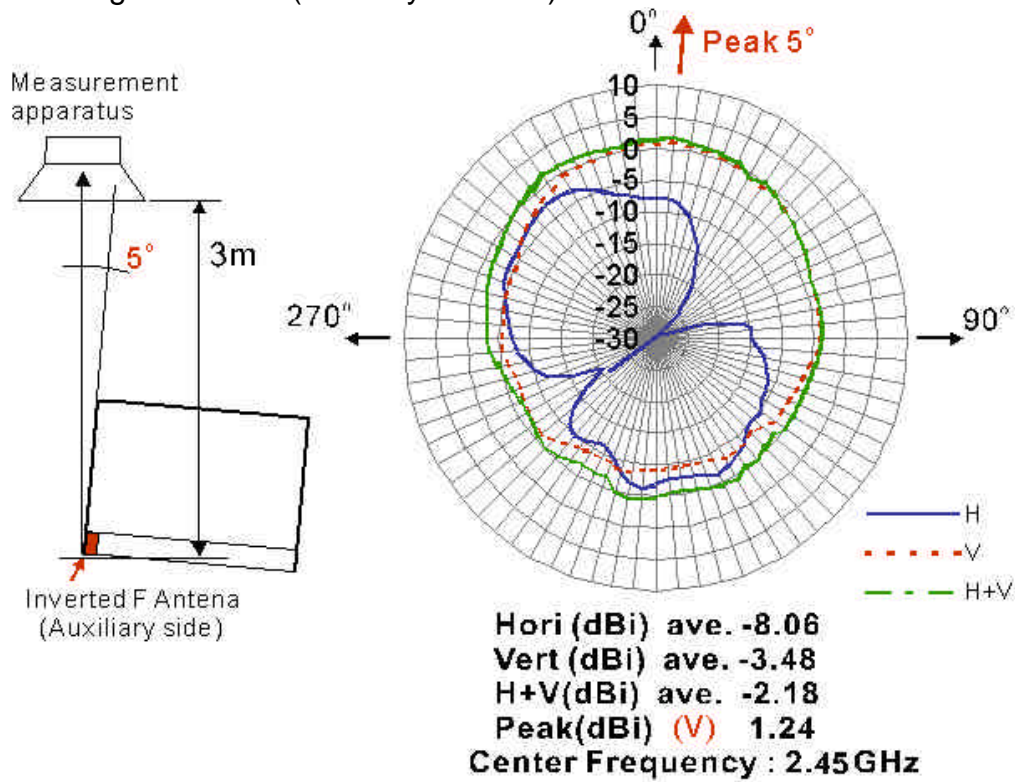
The left antenna (Main Antenna)



Note1) The measurement was performed at 3 frequencies (2400, 2450, 2500MHz).

Note2) The maximum antenna gain was found around **0 degree** angle from measuring apparatus in **vertical** polarization at the highest frequency (2.50GHz).

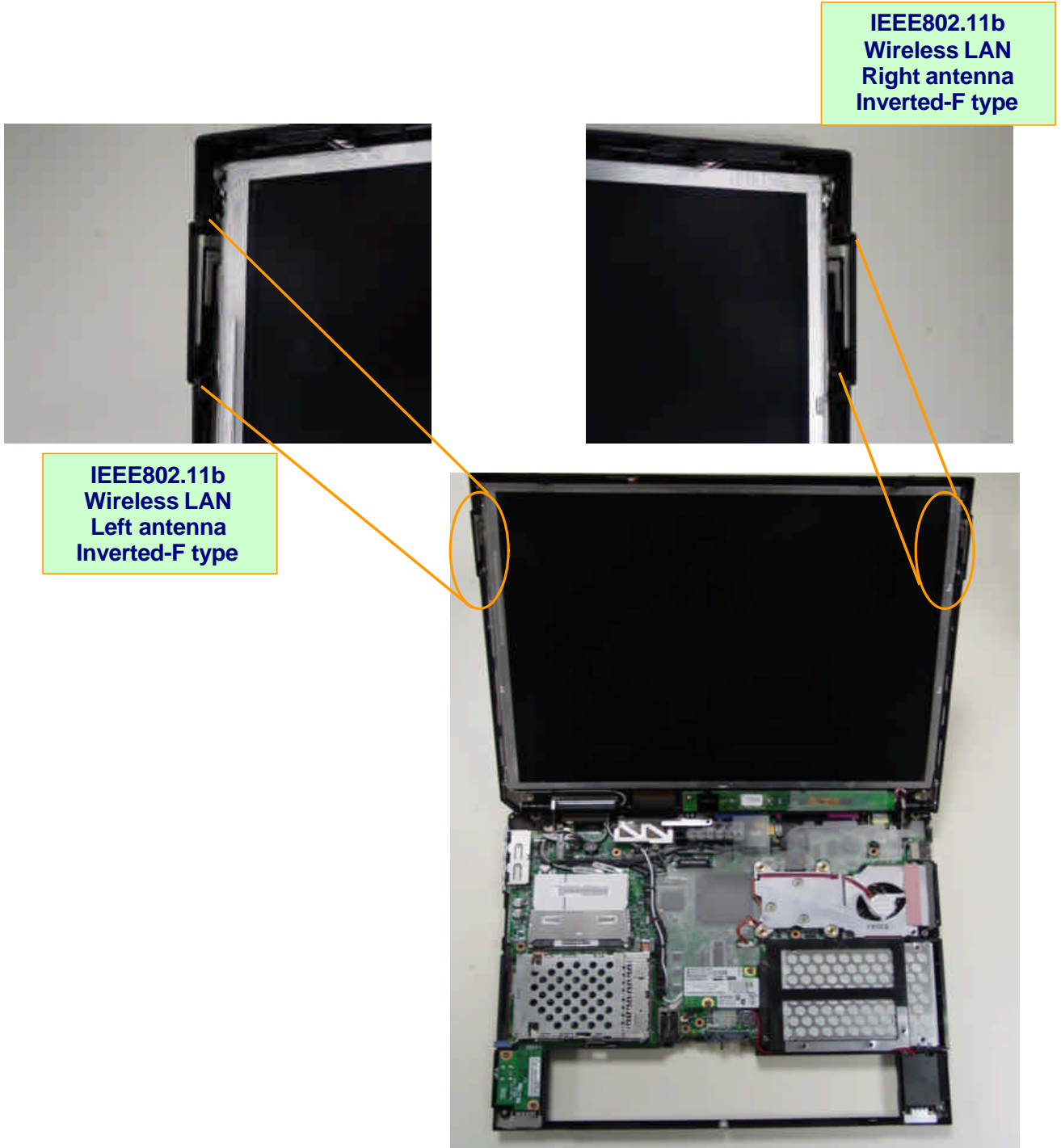
The right antenna (Auxiliary antenna)



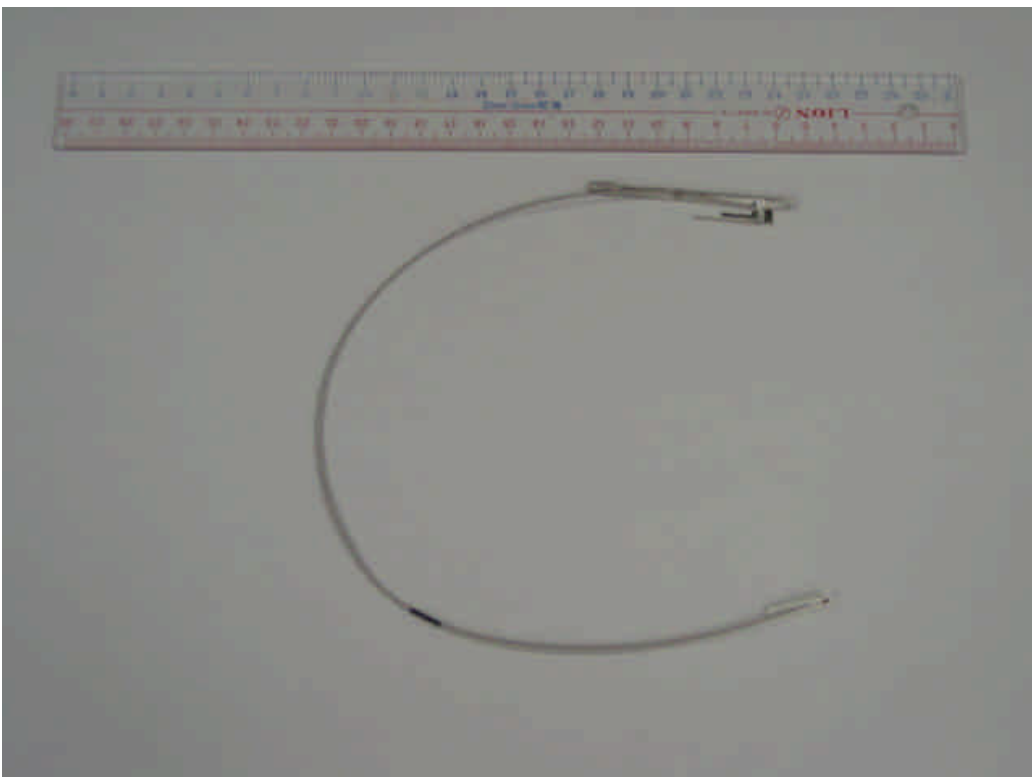
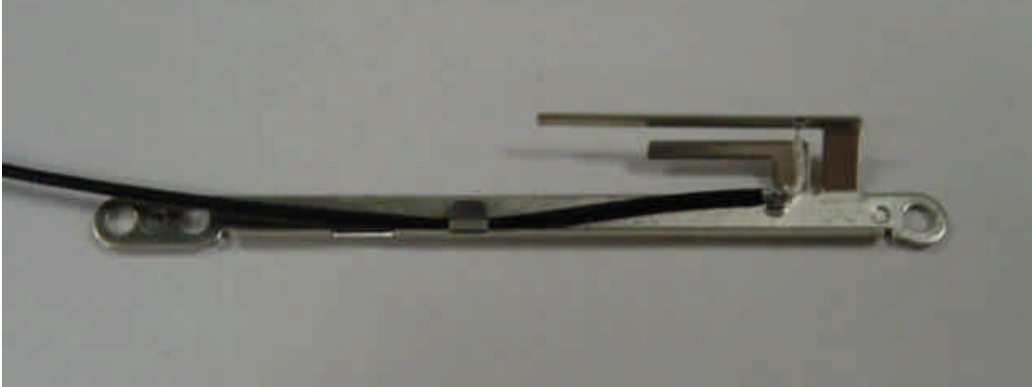
Note1) The measurement was performed at 3 frequencies (2400, 2450, 2500MHz).

Note2) The maximum antenna gain was found around **5 degree** angle from measuring apparatus in **vertical** polarization at the middle frequency (2.45GHz).

3. Antenna Locations



4. Exterior Photos of Antennas



Left antenna (Tx/Rx switch) : IBM P/N: 46L4677 Cable : coax 380 mm
Right antenna (Rx only) : IBM P/N: 46L4676 Cable : coax 520 mm