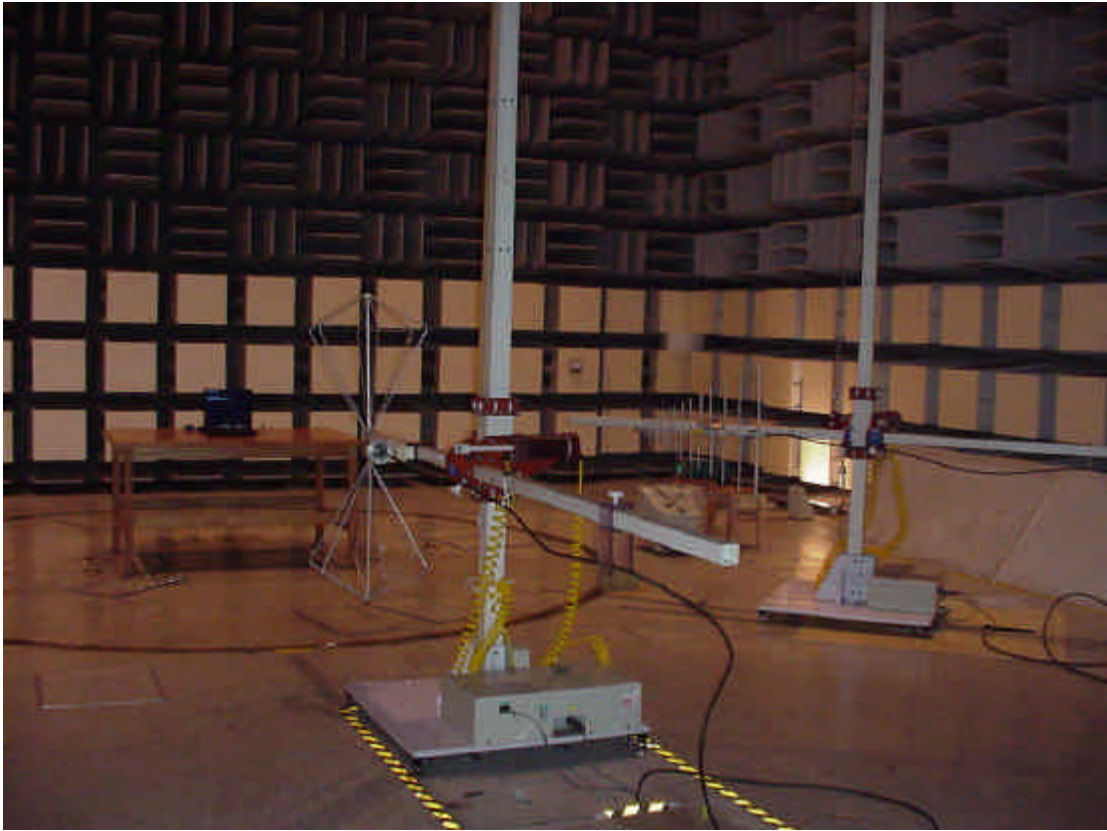


Test Setup Photos

EMI Semi-anechoic Chamber #2



EMI Radiated Measurement Photos

FCC	IC		
15.205 / 209	6.2.1 / 6.3	General Field Strength Limits (Restricted Bands and Radiated Emission Limits)	Tx
15.209	7.3	General Field Strength Limits (Radiated Emission Limits)	Rx

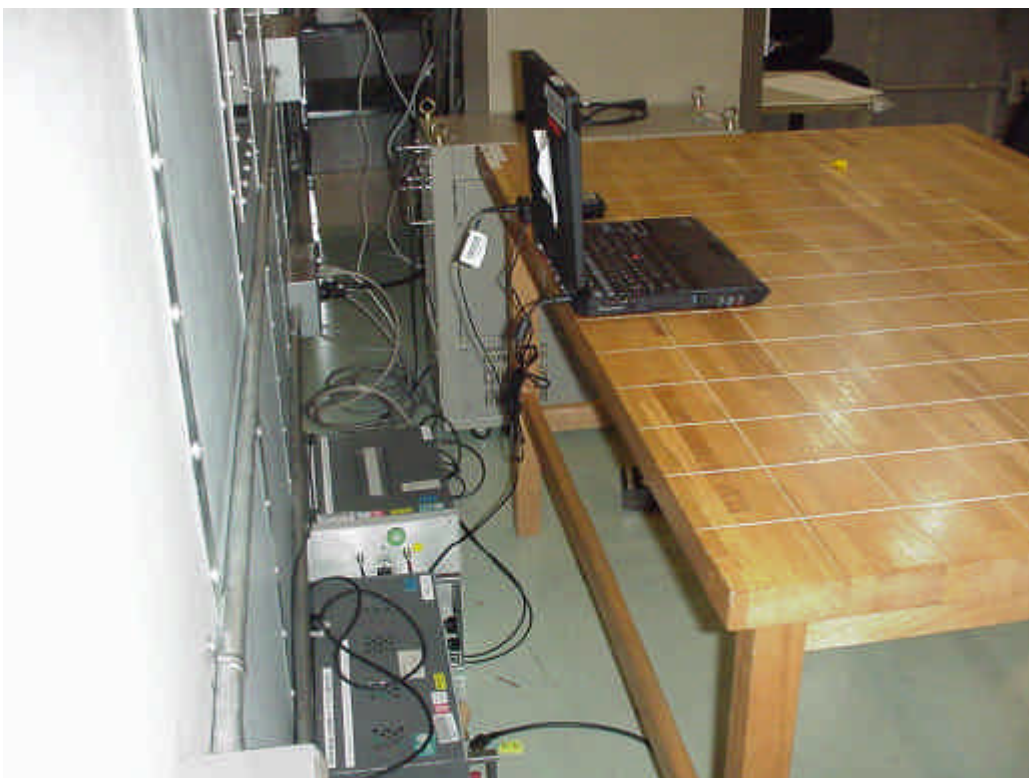
EMI Semi-anechoic Chamber #2 (zoom up)



EMI Conducted Measurement Photos

FCC	IC		
15.207	6.6	AC Wireline Conducted emissions	Tx
15.207	7.4	AC Wireline Conducted emissions	Rx

Conducted EMI Room



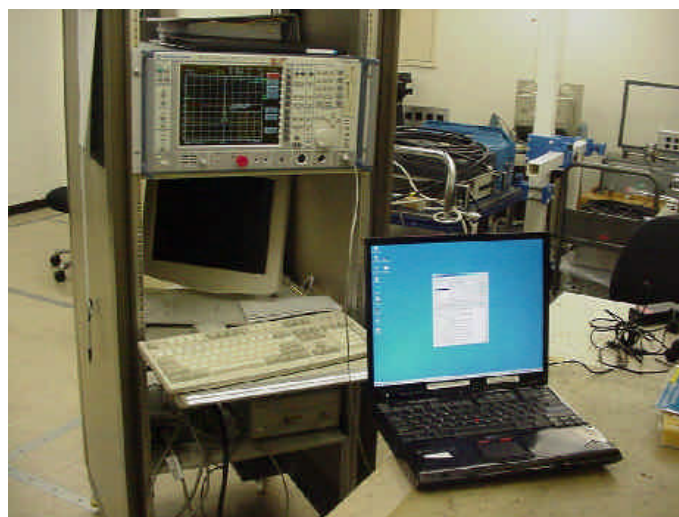
Conducted Measurement Photos

FCC	IC	Measurement Items	IEEE802.11b	Buetooth	
15.247(a)(1)	6.2.2(o)(a1)	Carrier Frequency Separation	Tx	<input type="radio"/>	
	6.2.2(o)(a3)	Number of Hopping Frequencies		<input type="radio"/>	
		20 dB Bandwidth per 1 hopping		<input type="radio"/>	
		Dwell time		<input type="radio"/>	
(f)	(o)(c2)	Hybrid Dwell time		<input type="radio"/>	
15.247(a)(2)	5.9.1	Bandwidth at 6 dB blow		<input type="radio"/>	<input type="radio"/>
15.247(b)(1)	6.2.2(o)(a3)	Peak output power		<input type="radio"/>	<input type="radio"/>
	(o)(b)			<input type="radio"/>	<input type="radio"/>
15.247(c)	5.9.1	Occupied BW (or Band-edge) Out of Band Emissions (Bandwidth at 20 dB blow)		<input type="radio"/>	<input type="radio"/>
	6.2.2(o)(e1)			<input type="radio"/>	<input type="radio"/>
15.247(d)	6.2.2(o)(b)	Transmitter power density	<input type="radio"/>	<input type="radio"/>	
(f)	(o)(c2)	Hybrid transmitter power density	<input type="radio"/>	<input type="radio"/>	

EMI Semi-anechoic Chamber #2, Operation Room

WLAN Test

Bluetooth Test



Antenna cables