

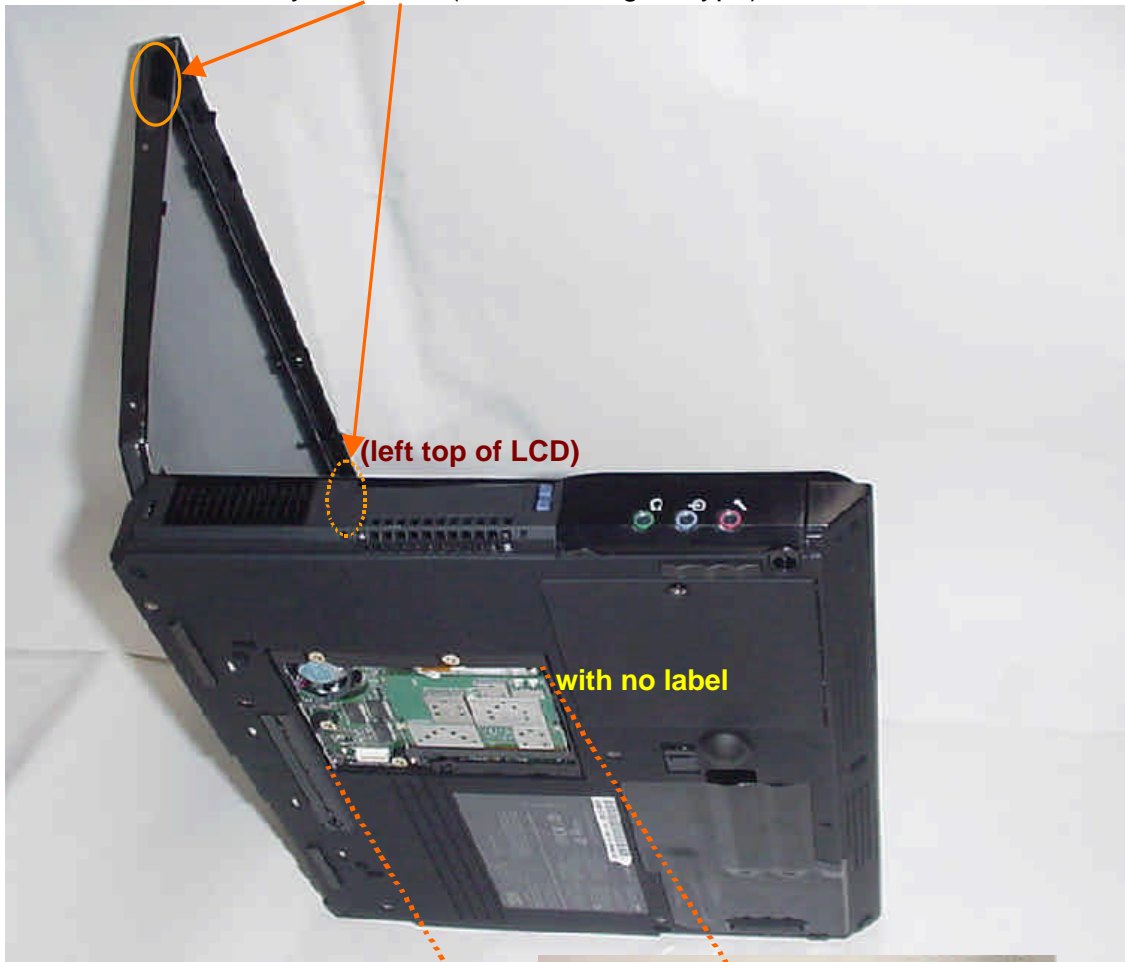
Host Unit Information of ThinkPad T30 Series

- **Host PC Information**
- **Host PC Labeling**
- **Antenna Information**

Host PC Information

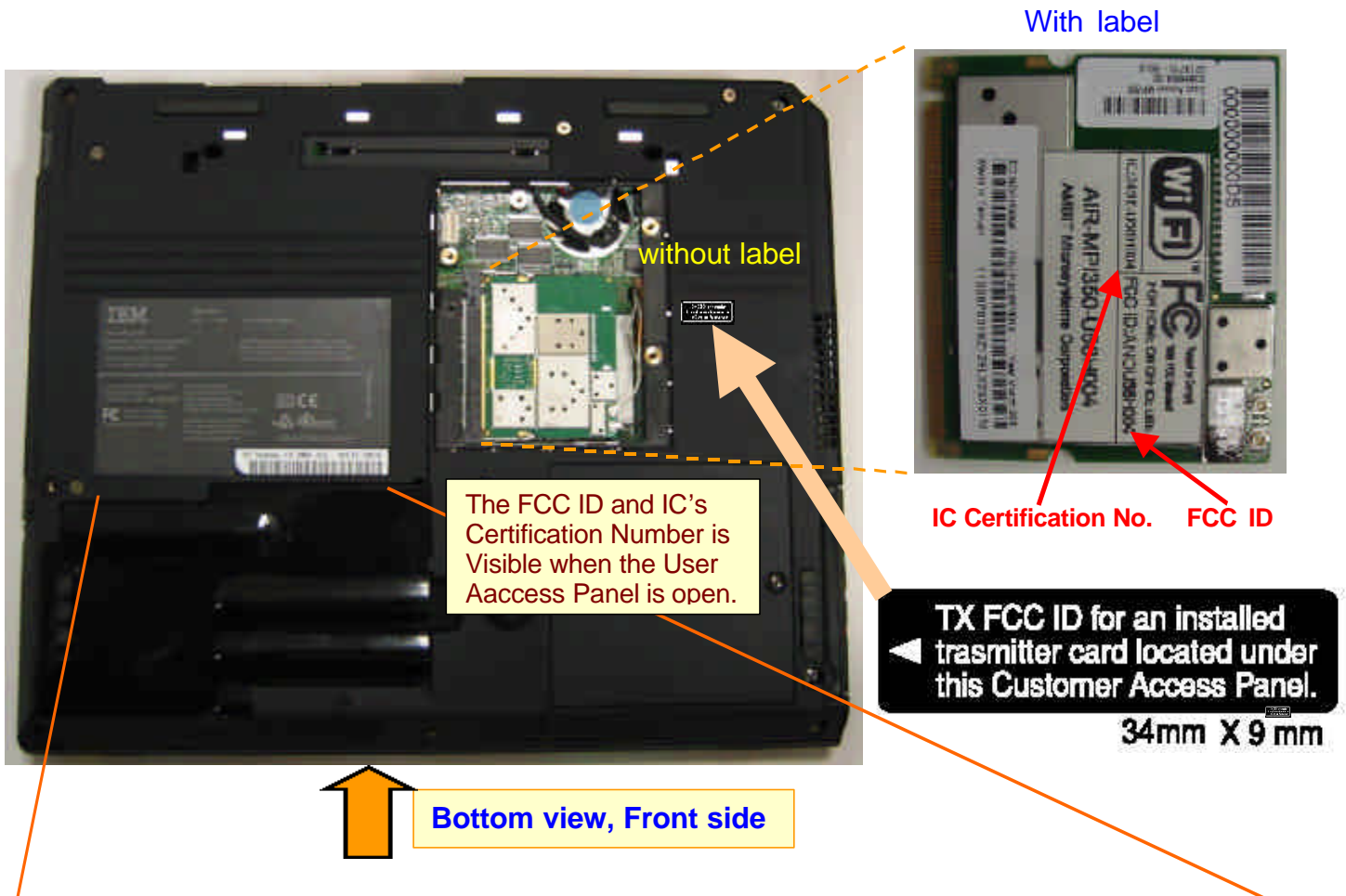
Two inverted F-figure type antennas are integrated in the both sides of LCD. Those diversity antennas are not used simultaneously for the RF transmission. One of the antennas is selected automatically or manually to have a good quality of Radiocommunication. The selected antenna performs transmission or receiving in half duplex alternatively.

Diversity antennas (inverted F-figure type)



Users can see the approval label easily, when the bottom cover is open.

Host PC Labeling



	<p>Type 2367 16V --- 4.5A</p>	<p>This Product contains a Lithium Ion Battery, Lithium Battery and Cathode Fluorescent Lamp which contains mercury. Please refer to User Manual or follow Local Ordinances or Regulations for Disposal of this machine.</p>	<p>MAC Address</p>
<p>Marca Registrada ®Registered Trademark of International Business Machines Corporation</p>	<p>This Class B digital apparatus meets all requirements of the Canadian Interference Causing Equipment Regulations</p>	<p>Cet appareil numérique de la classe B respecte toutes les exigences du Règlement sur le matériel brouilleur du Canada.</p>	
<p>COPYRIGHTED CODE AND PARTS CONTAINED HEREIN. ©COPYRIGHT 1981, 2002 IBM CORP.</p>	<p>AUSTRALIA WARNING: ONLY EQUIPMENT THAT HAS A TELECOMMUNICATIONS COMPLIANCE LABEL MAY BE CONNECTED TO THE HEADSET PORT.</p>		
<p>FC Tested To Comply With FCC Standards FOR HOME OR OFFICE USE</p>	<p>Apparatus Claims of U.S. Patent Nos. 4,831,803; 4,577,216; 4,819,098 and 4,907,093 licenced for limited viewing uses only.</p>		

Antenna Information

1. Antenna Specification

Transmission Antenna assembly overview

Designator (Parts Number)	Manufacture	Antenna type	Cable type and length	Gain (dBi) Note 1)
LCD left antenna 46L4819	IBM Japan Ltd.	Inverted F type Antenna	coax 560mm	0.53 dBi (peak)
LCD right antenna 46L4818			coax 800mm	-0.80 dBi (peak)

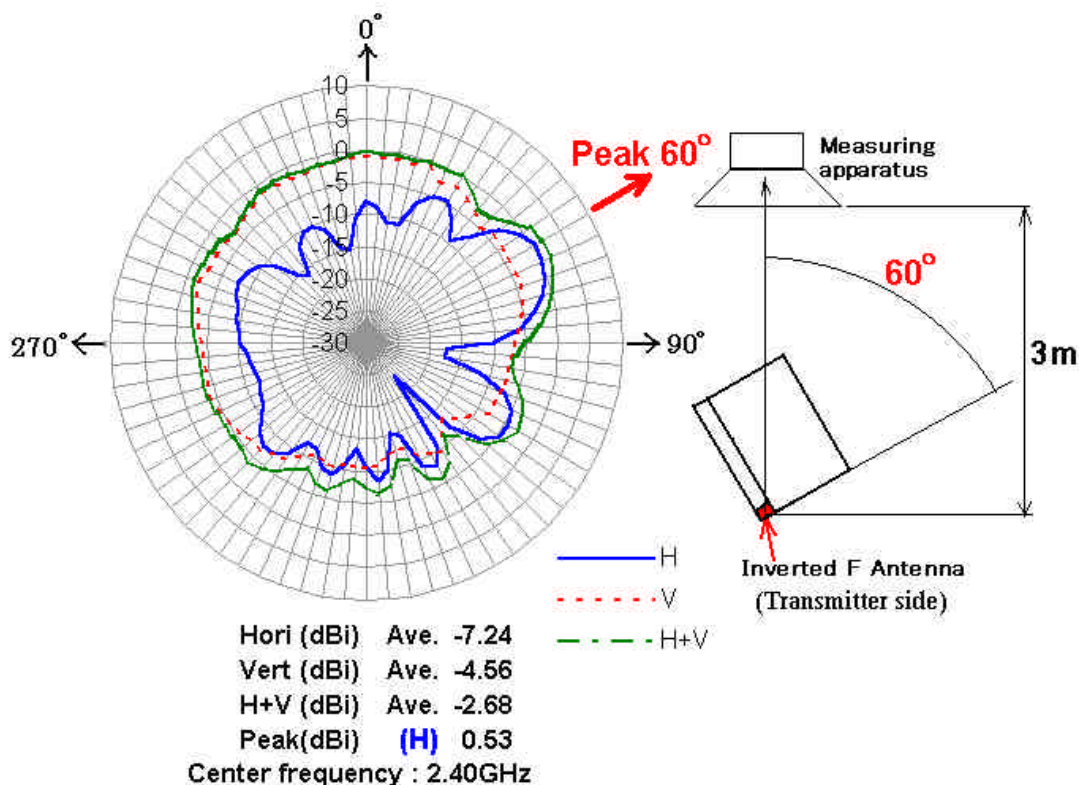
Notes:

1a. Includes all cable losses

1b. Antenna type should be Omni Directional and have gain of 3.0 dBi or less regarding the IBM internal specification.

2. Radiation characteristic of antenna

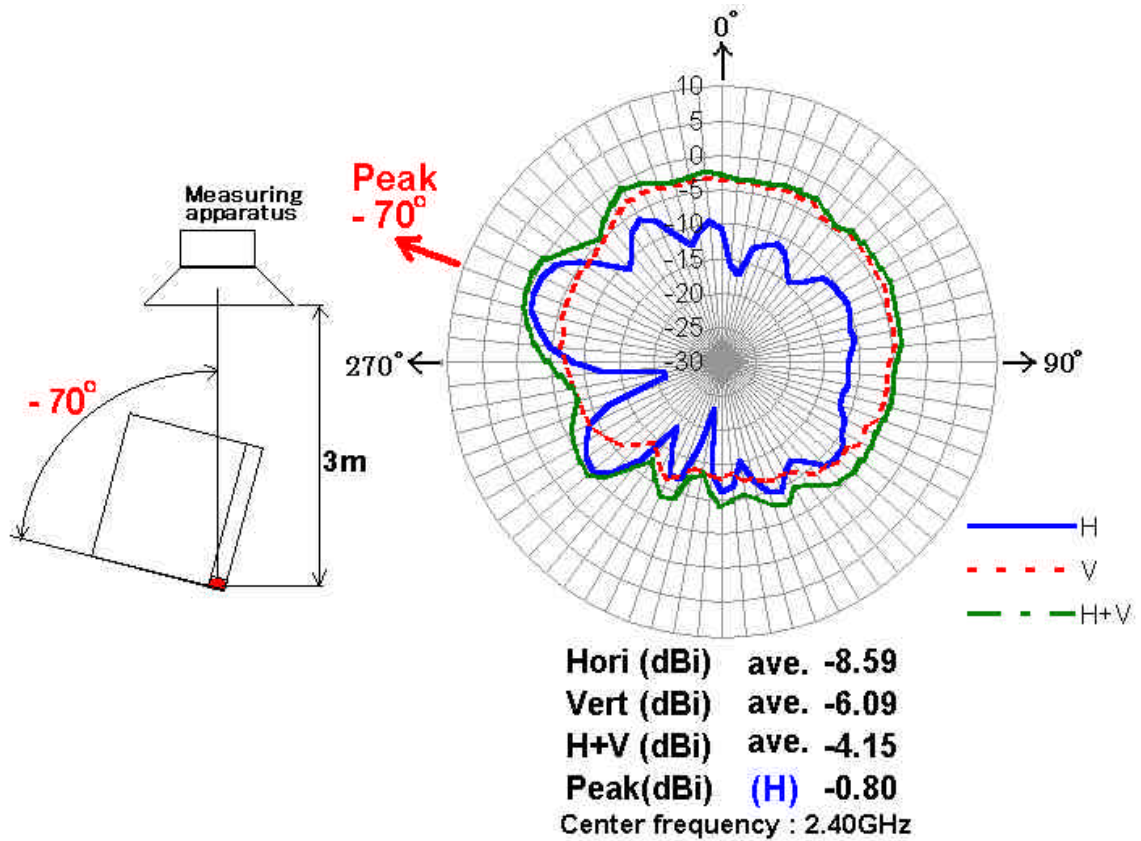
The left antenna



Note1) The measurement was performed at 3 frequencies (2400, 2450, 2500MHz).

Note2) The maximum antenna gain was found around **60 degree** angle from measuring apparatus in **horizontal** polarization at the lowest frequency(2.40GHz).

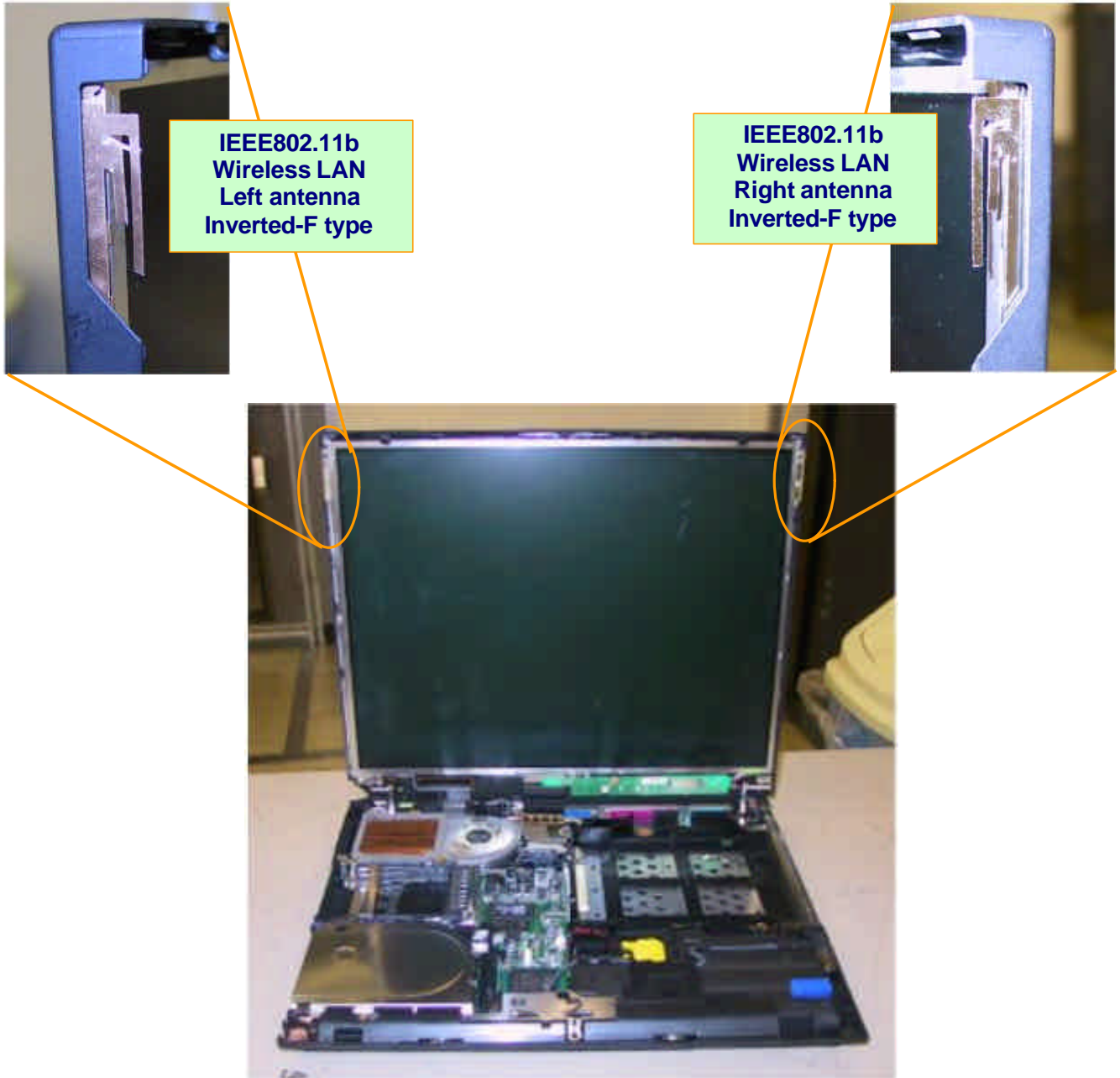
The right antenna



Note1) The measurement was performed at 3 frequencies (2400, 2450, 2500MHz).

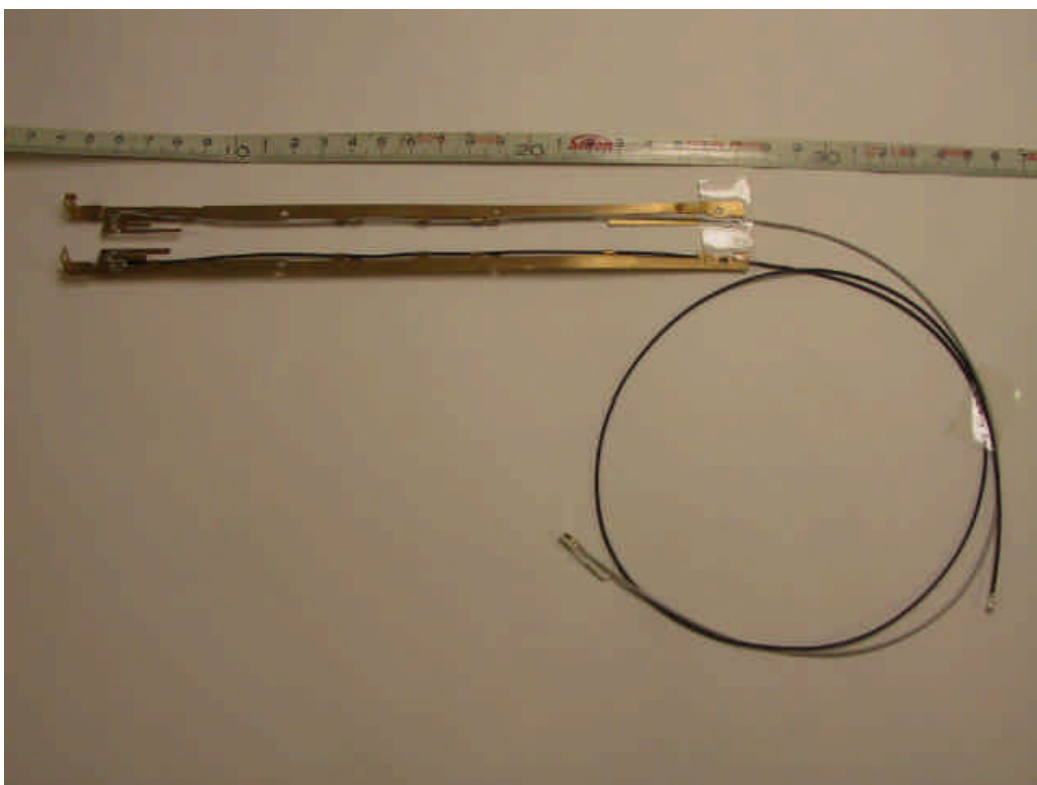
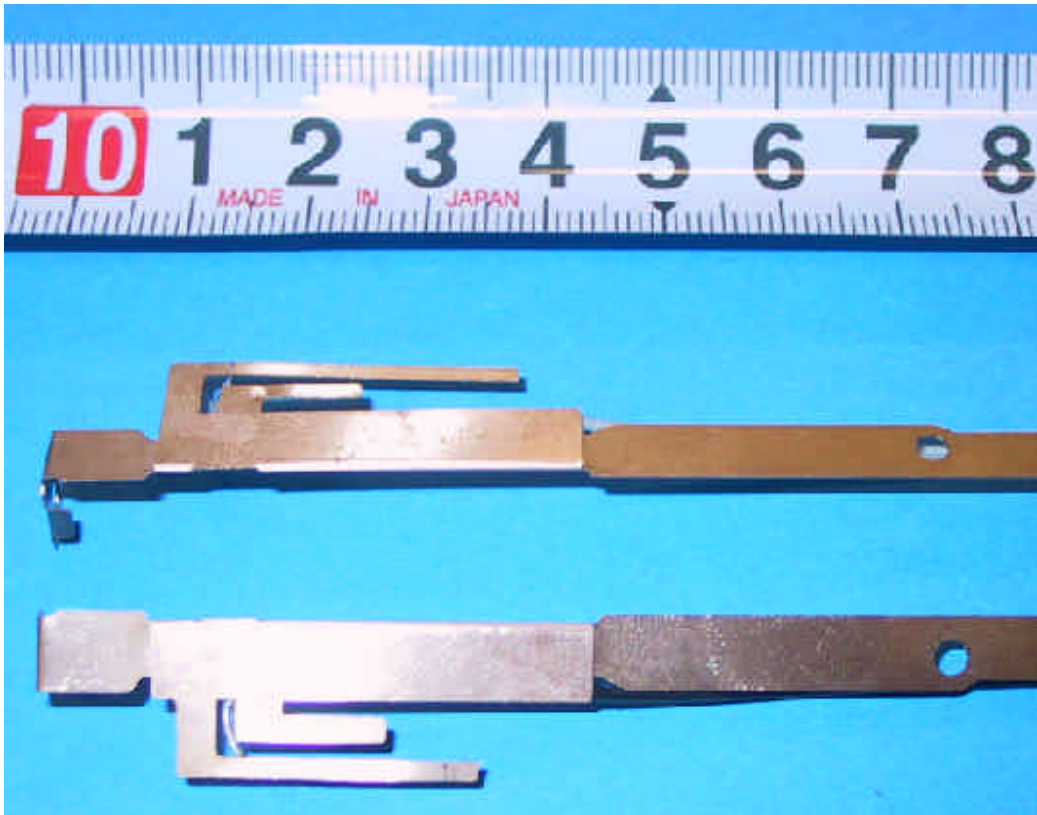
Note2) The maximum antenna gain was found around **- 70 degree** angle from measuring apparatus in **horizontal** polarization at the lowest frequency(2.40GHz).

3. Antenna Locations



4. Exterior Photo of Antennas

(Inverted F type Antenna and Cable)



Left antenna : IBM P/N: 46L4819 Cable : coax 560 mm
Right antenna : IBM P/N: 46L4818 Cable : coax 800 mm