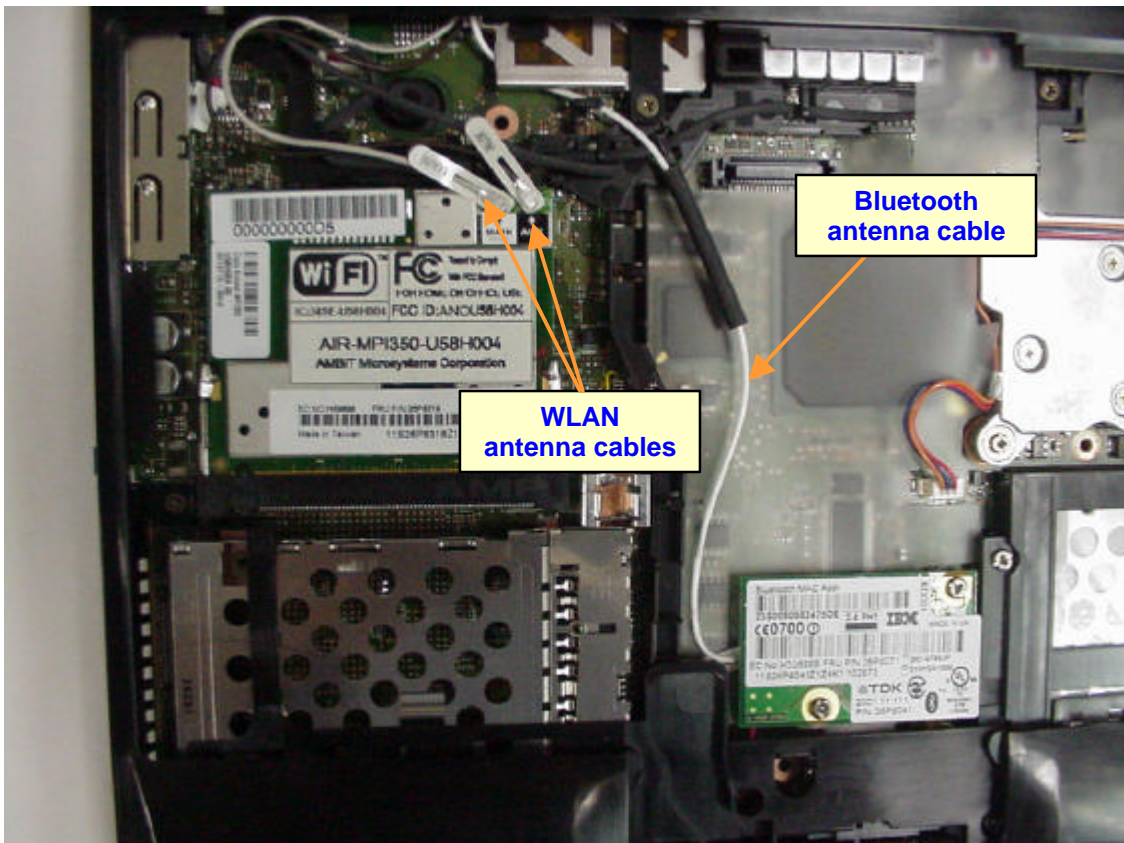


# Internal Photos



**IEEE802.11b Wireless LAN Mini-PCI card  
by Cisco Systems, Inc. .**

**Bluetooth Daughter card  
by TDK Systems Europe Ltd.**



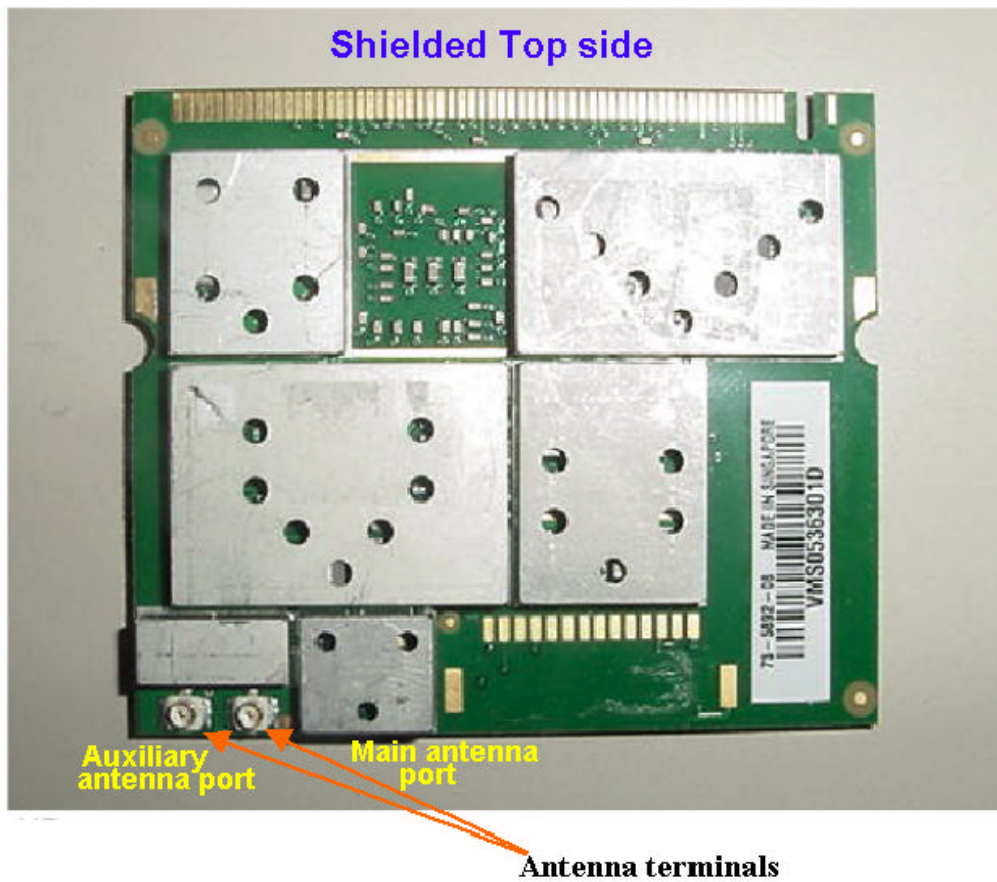
**WLAN  
antenna cables**

**Bluetooth  
antenna cable**

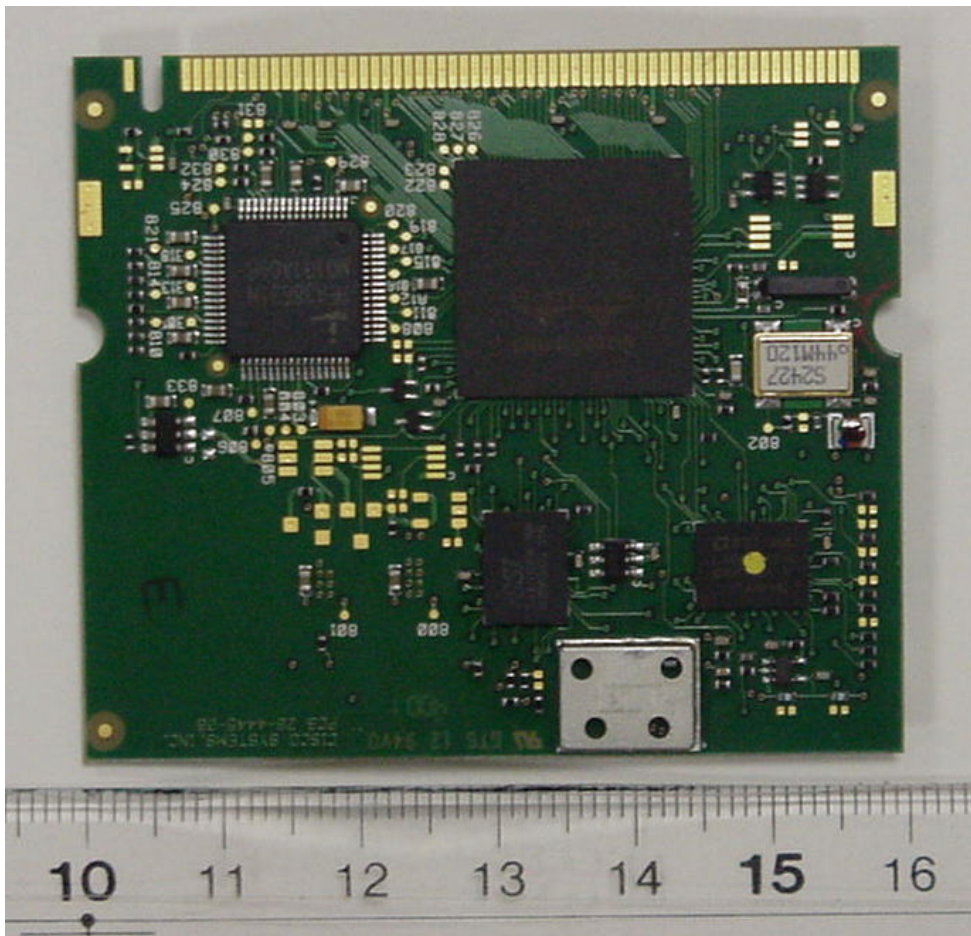
**IEEE802.11b Wireless LAN Mini-PCI Adapter**

IBM product name: **Cisco Aironet Wireless 802.11b**

Reference FCC ID : LDK 102042, MPI 350 Series, by CISCO Systems, Inc.



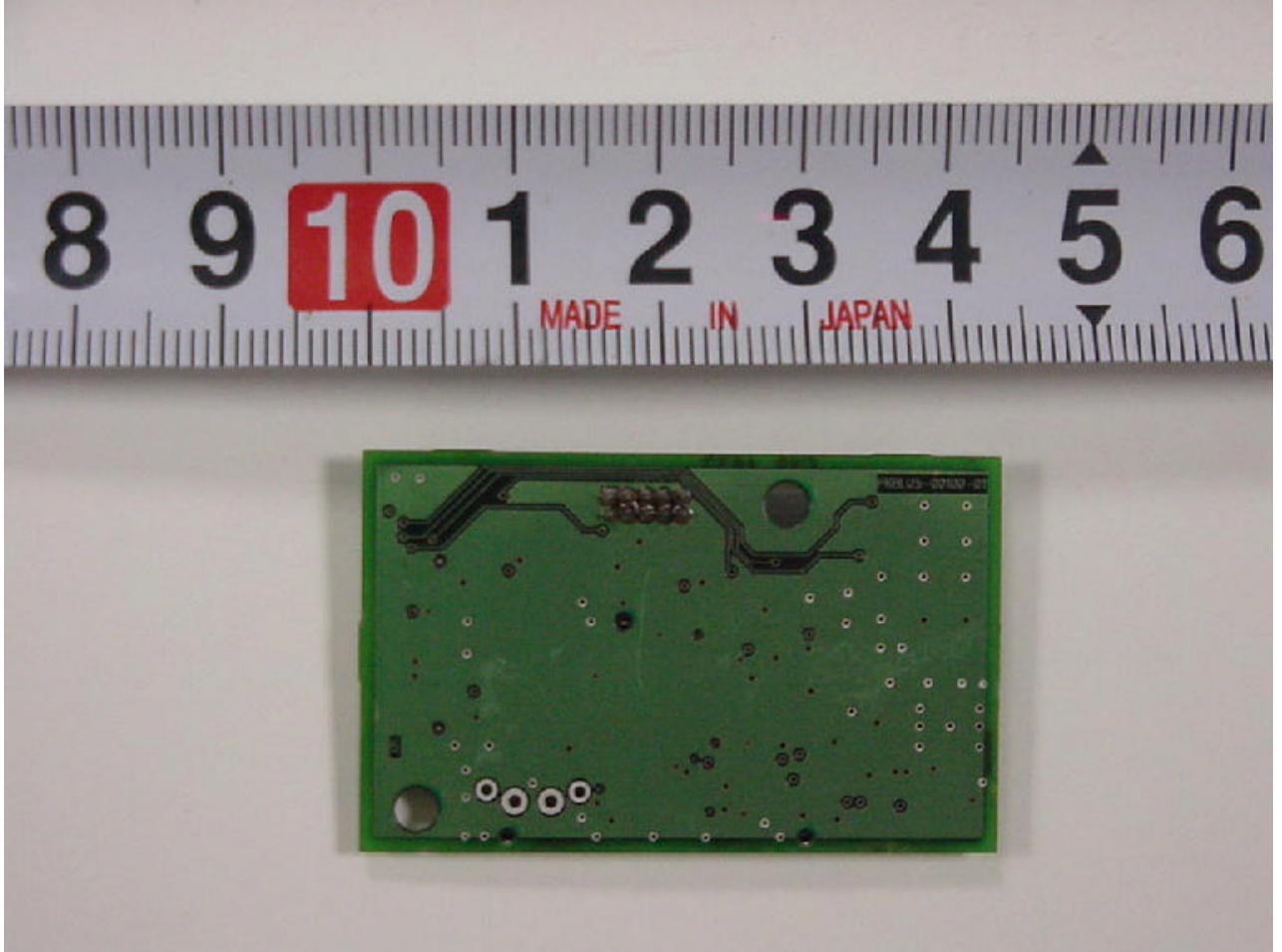
### Shelded Back Side



### Unshielded back side

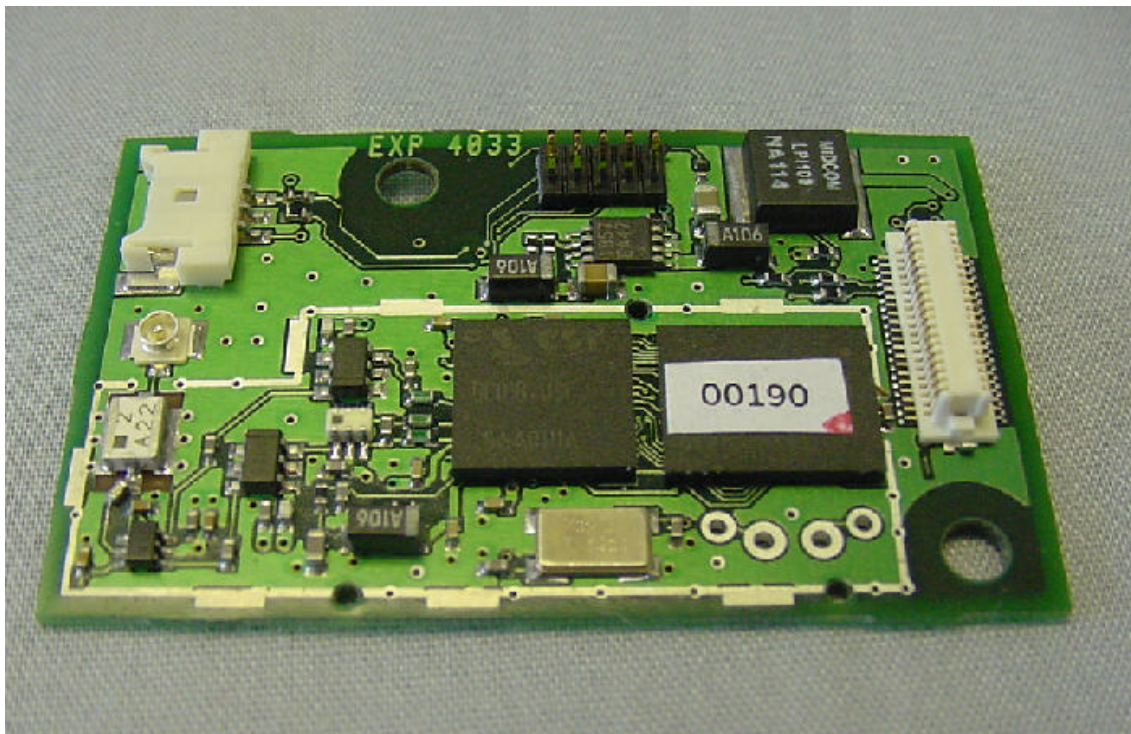
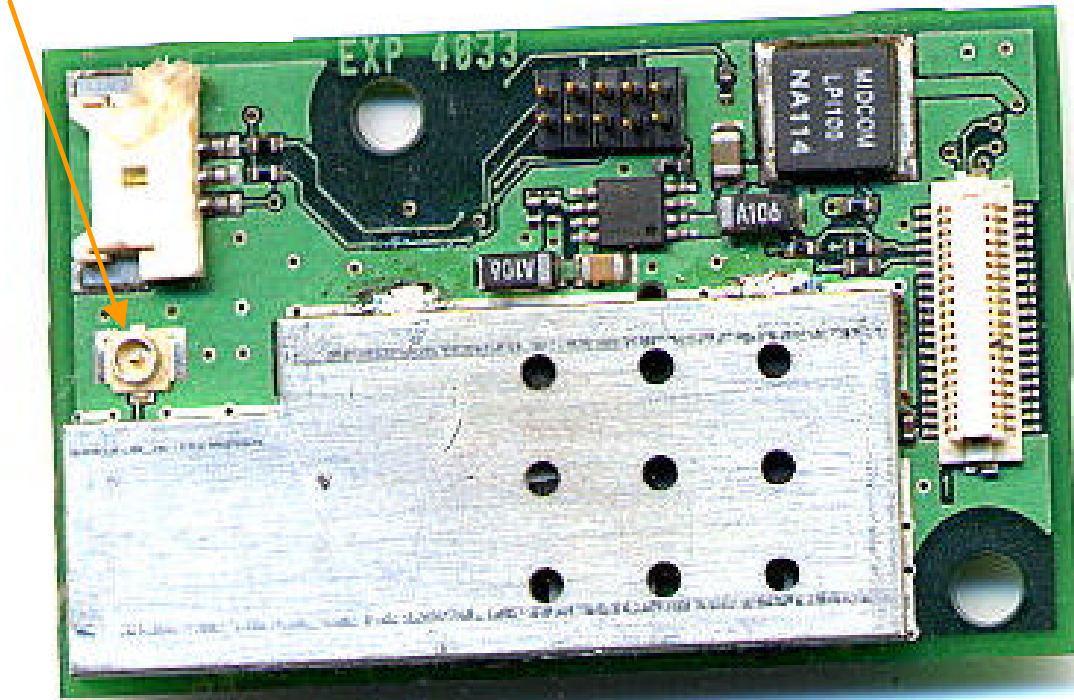


## Bluetooth Daughter Card (Top side)

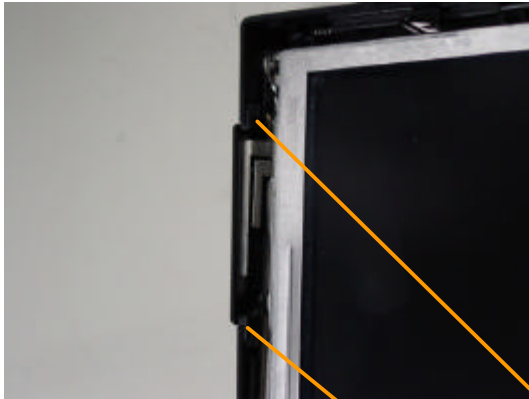


## Bluetooth Daughter Card (Back side)

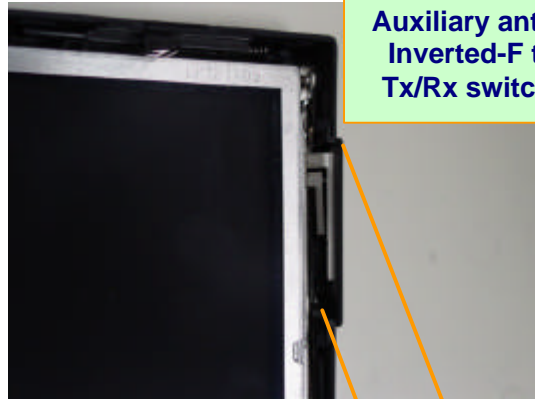
Antenna terminal



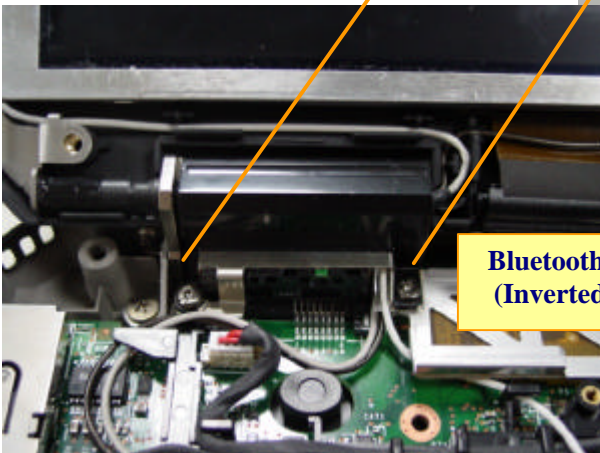
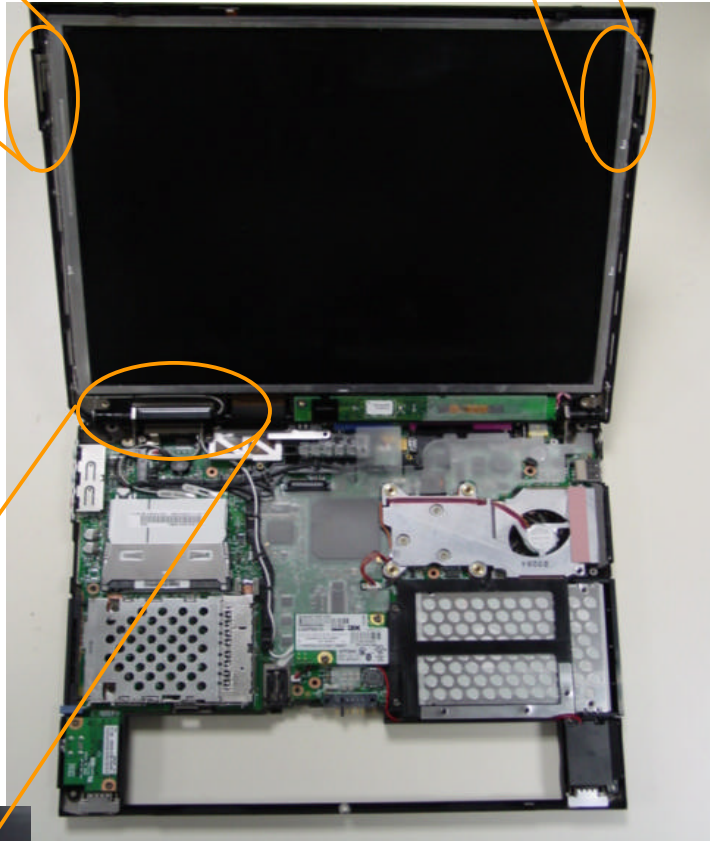
## Antenna Locations



**IEEE802.11b  
Wireless LAN  
Main antenna  
Inverted-F type  
Tx/Rx switching**

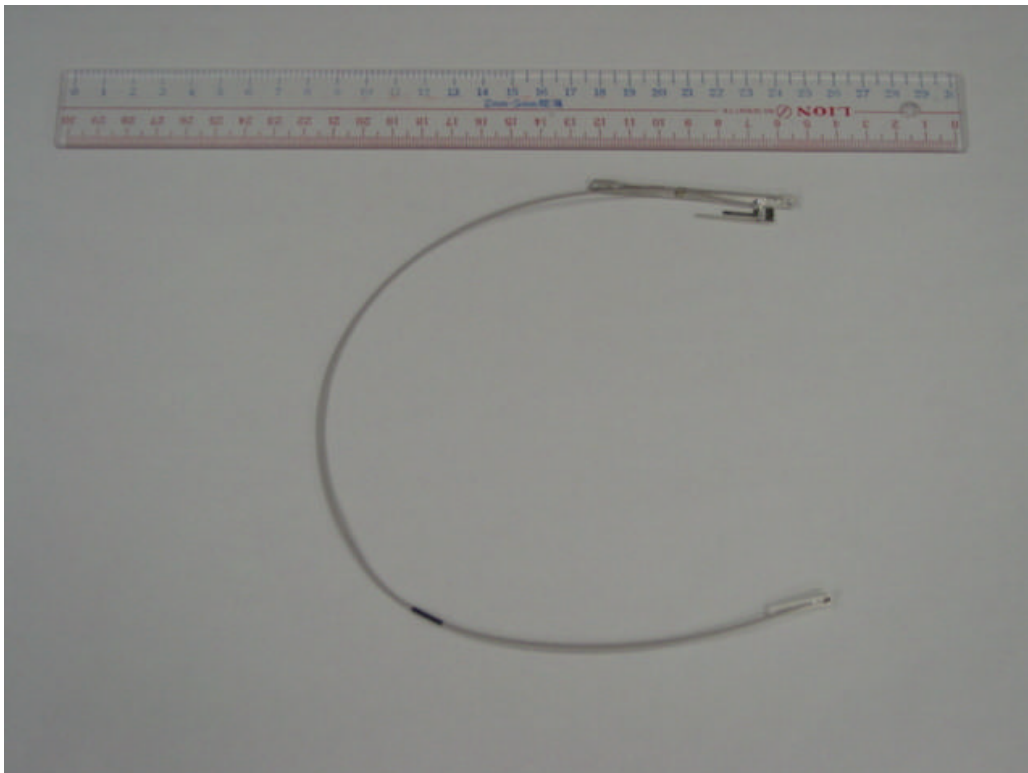
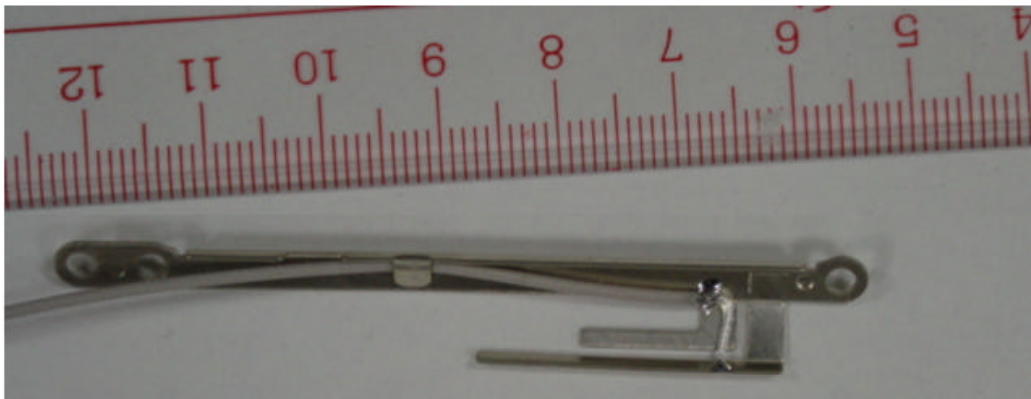
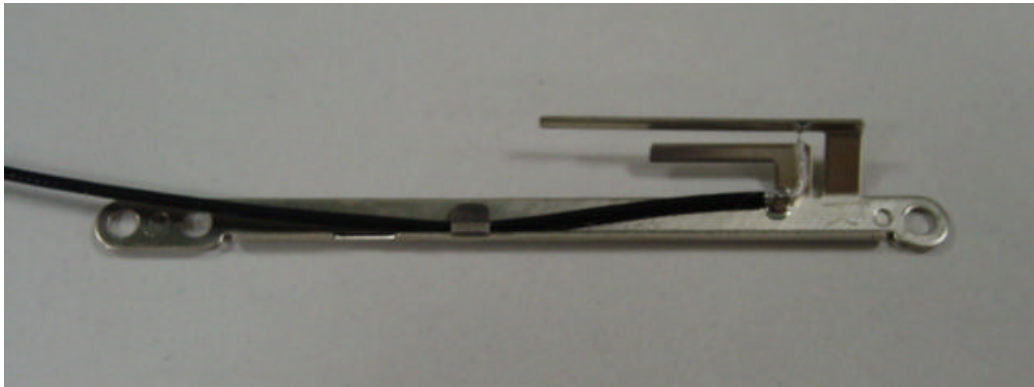


**IEEE802.11b  
Wireless LAN  
Auxiliary antenna  
Inverted-F type  
Tx/Rx switching**



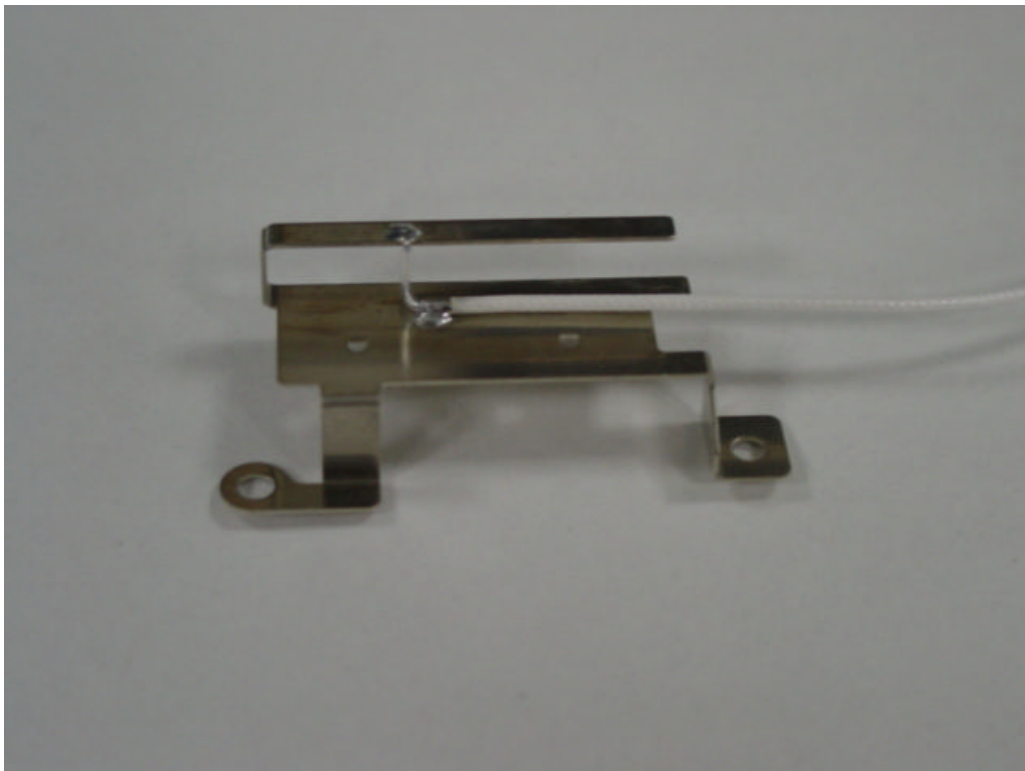
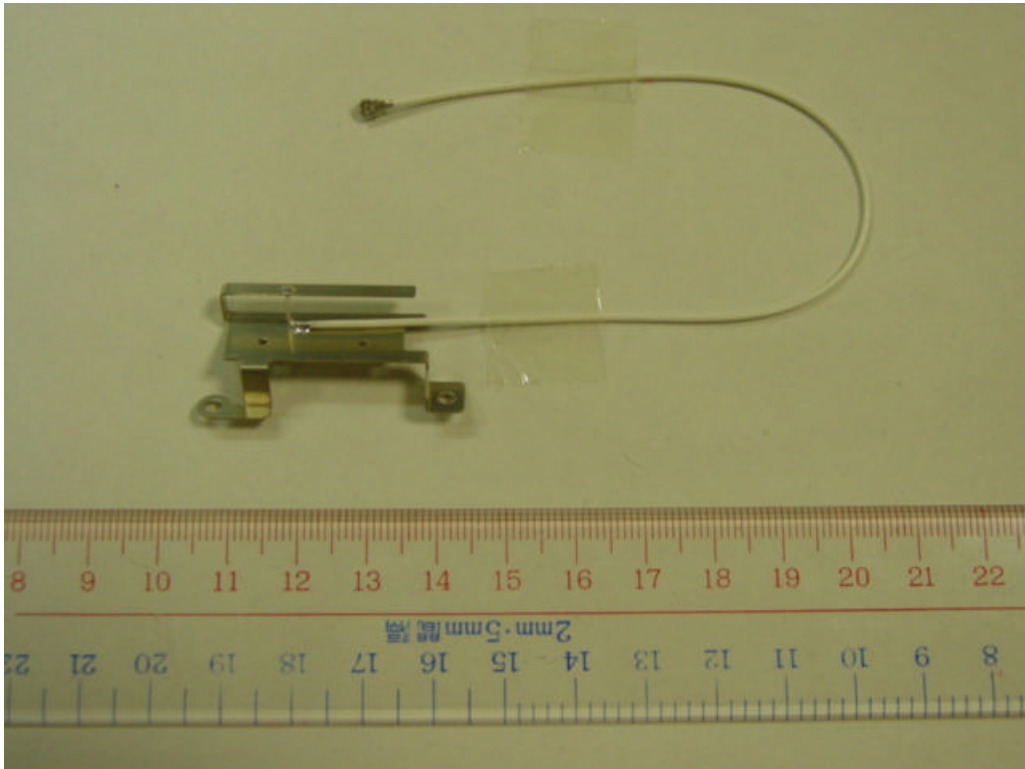
**Bluetooth Antenna (Tx/Rx)  
(Inverted-F type Antenna)**

## IEEE802.11b Wireless LAN Antenna (Inverted F type Antenna and Cable)



**Main antenna (Tx/Rx switch) : IBM P/N: 46L4677 Cable : coax 380 mm**  
**Auxiliary antenna (Tx/Rx switch) : IBM P/N: 46L4676 Cable : coax 520 mm**

## Bluetooth Antenna (Inverted F type Antenna and Cable)



**Tx/Rx switch : IBM P/N: 46L4680 Cable : coax 185 mm**