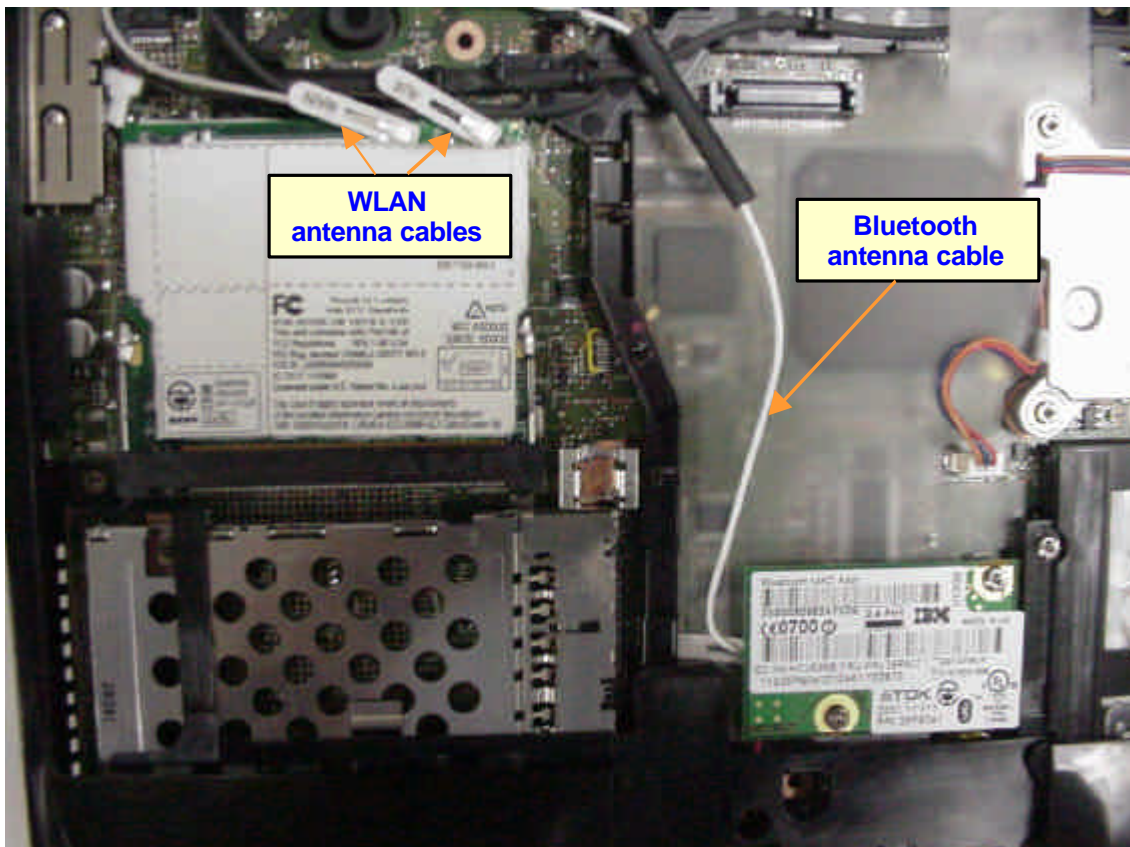
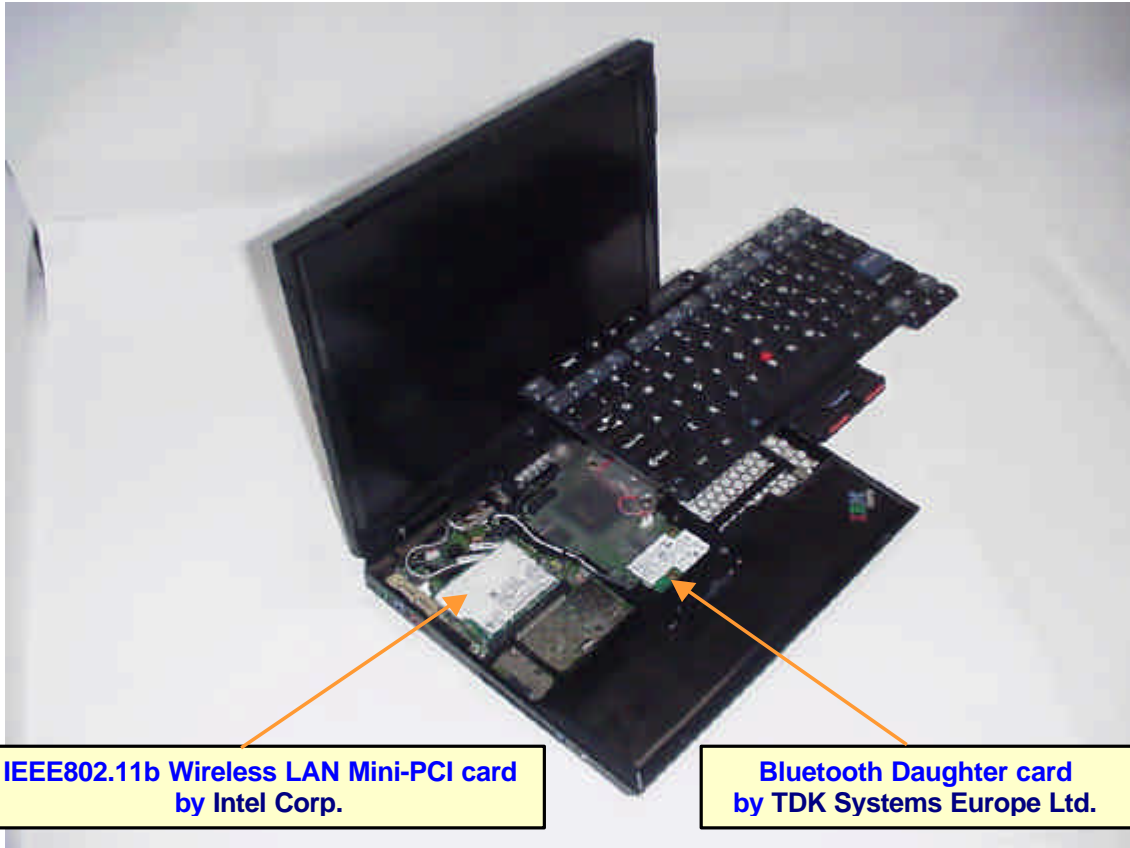


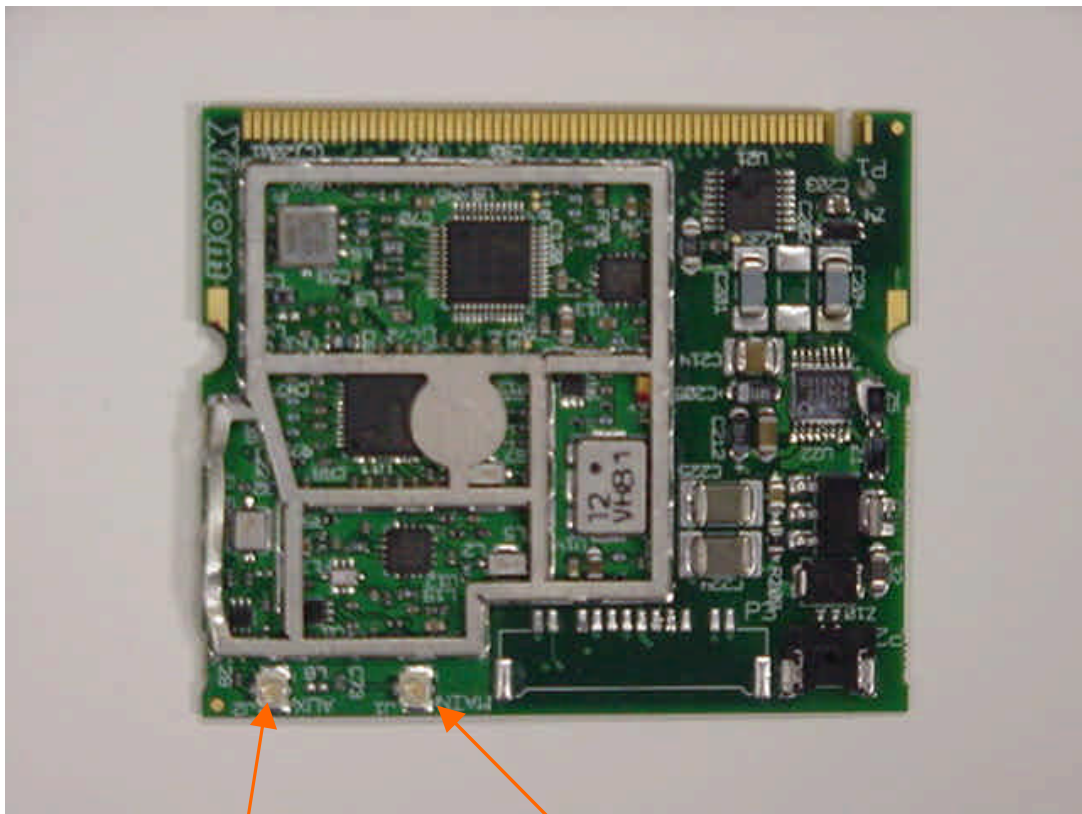
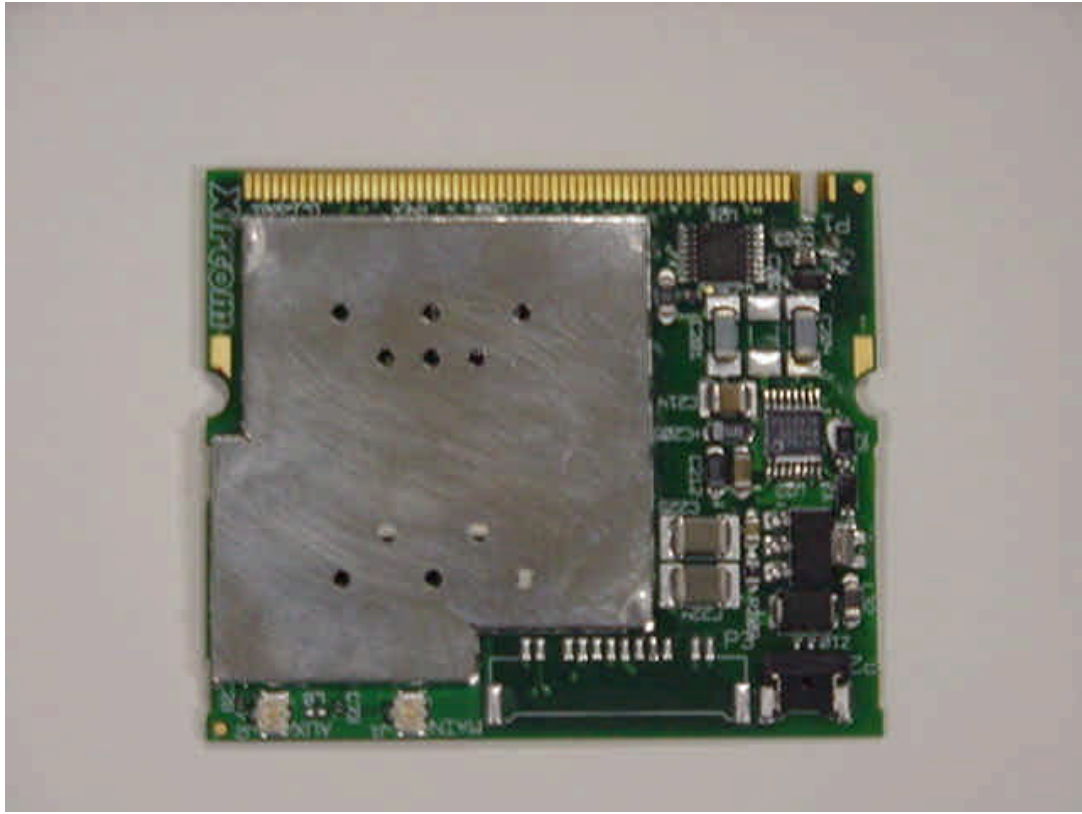
# Internal Photos



## IEEE802.11b Wireless LAN Mini-PCI Adapter (Back side)



## IEEE802.11b Wireless LAN Mini-PCI Adapter (Top side)

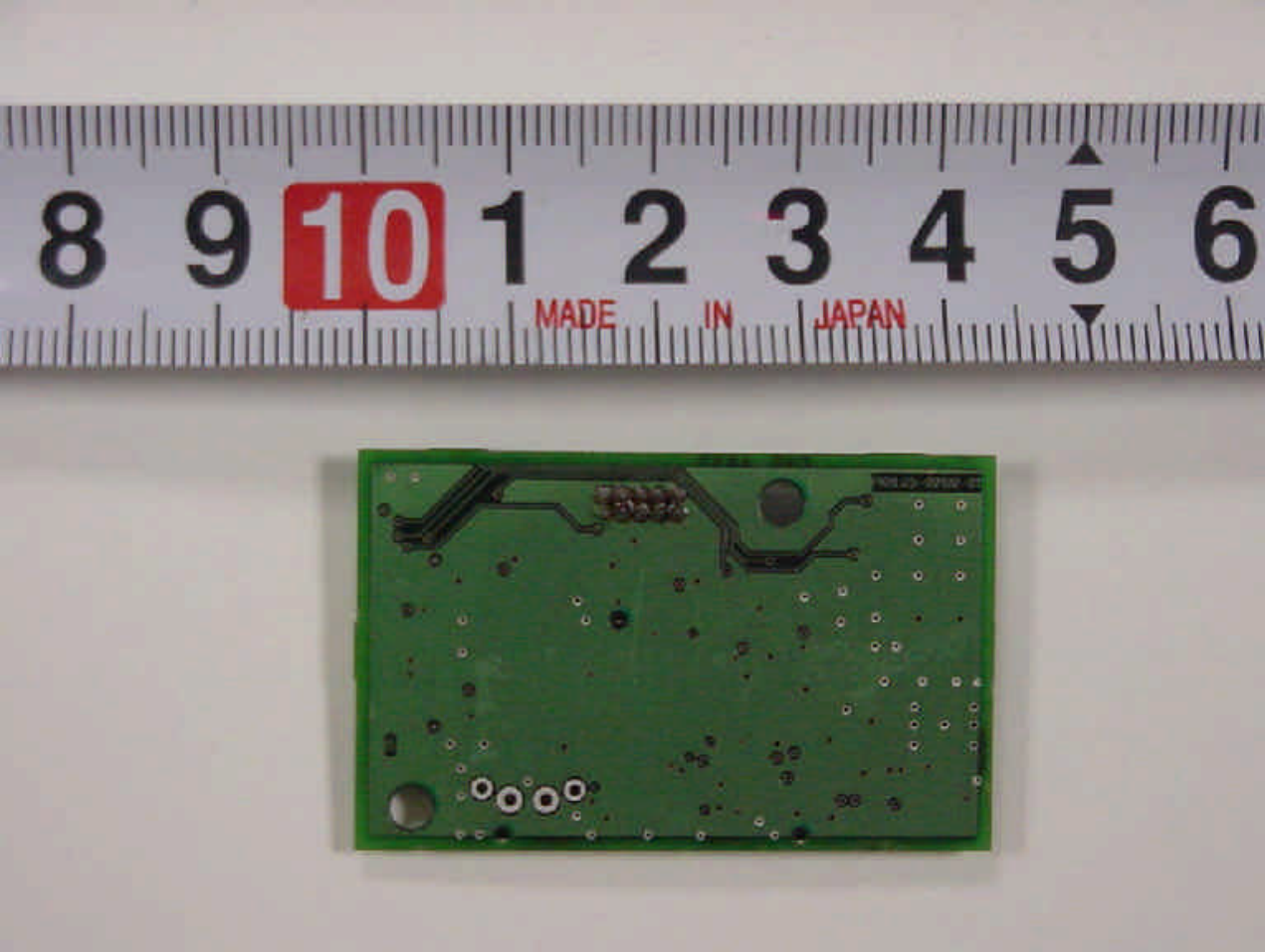


**Right Antenna terminal**

**Left antenna terminal**

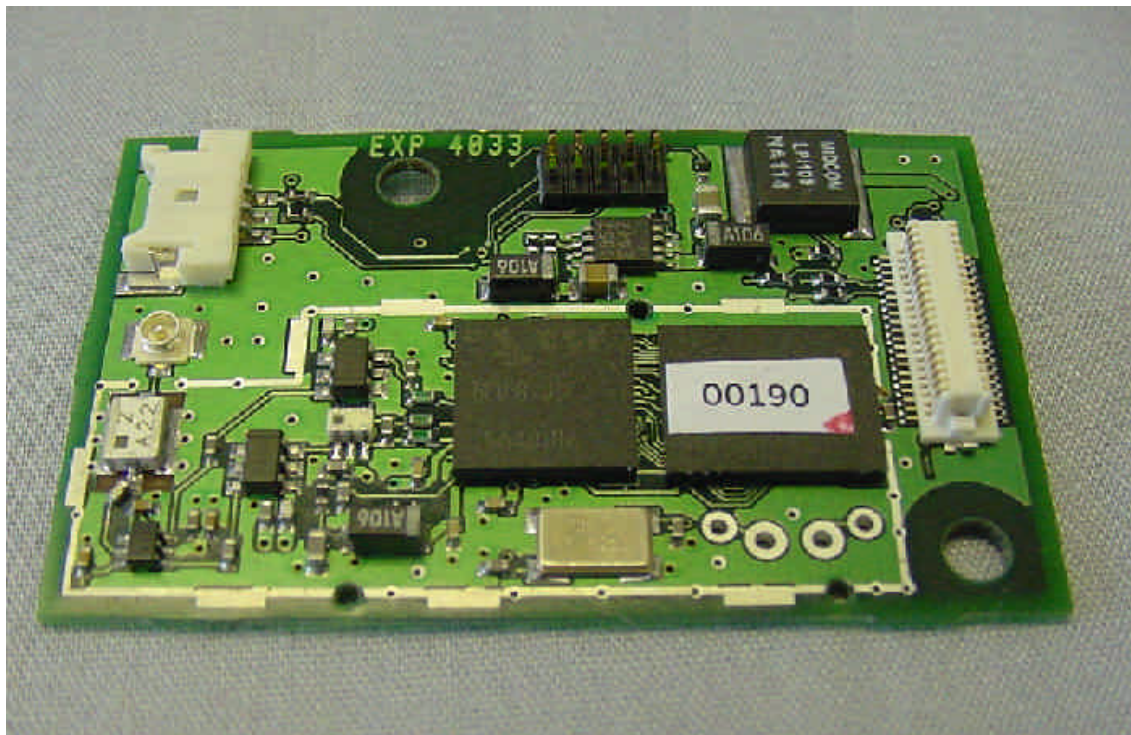
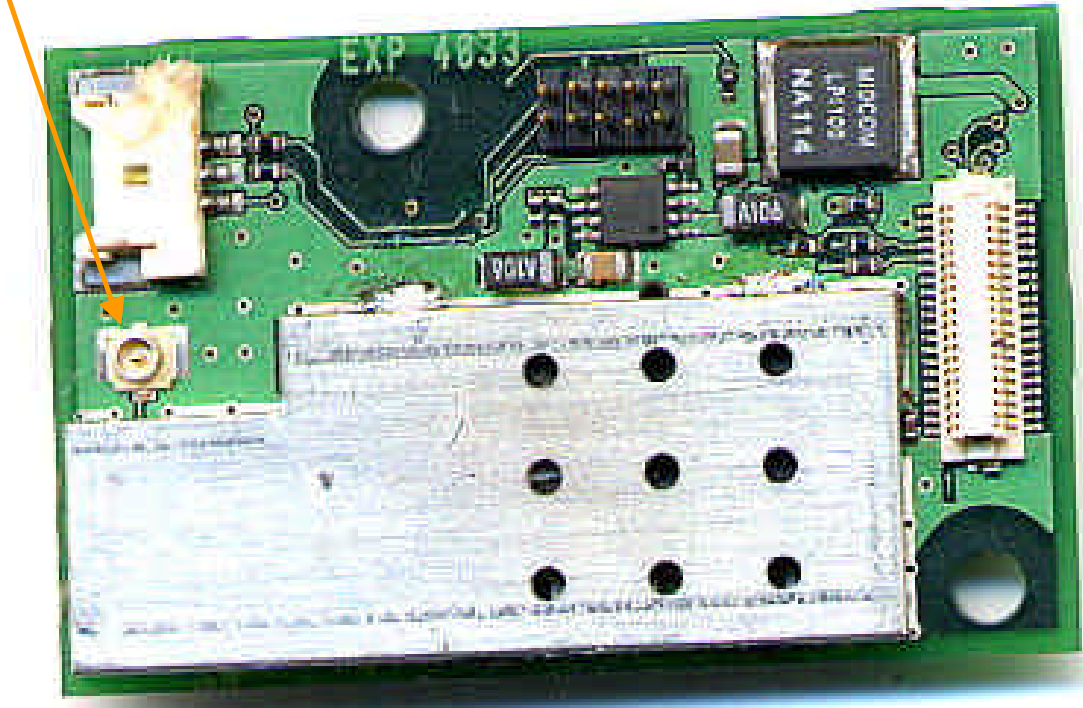


Bluetooth Daughter Card (Top side)

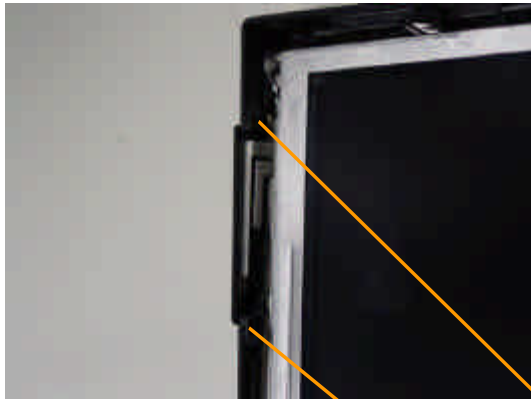


## Bluetooth Daughter Card (Back side)

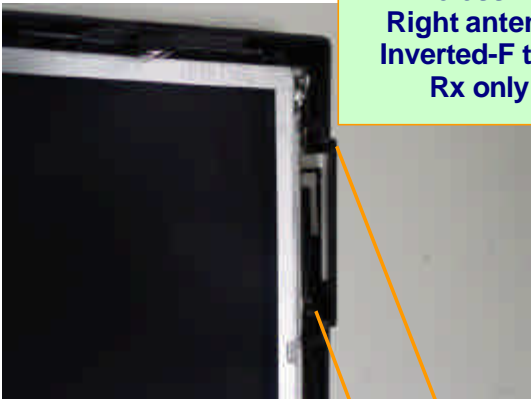
Antenna terminal



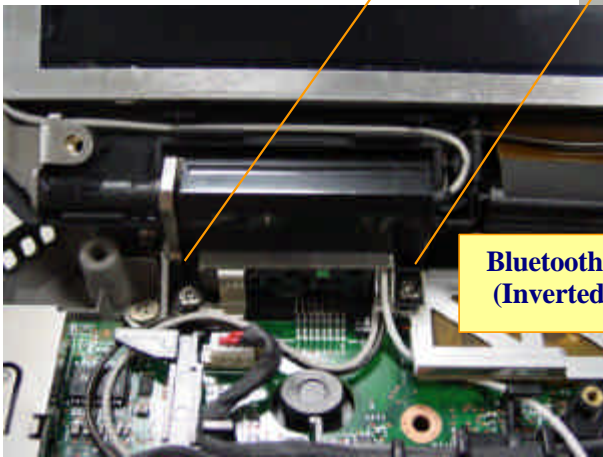
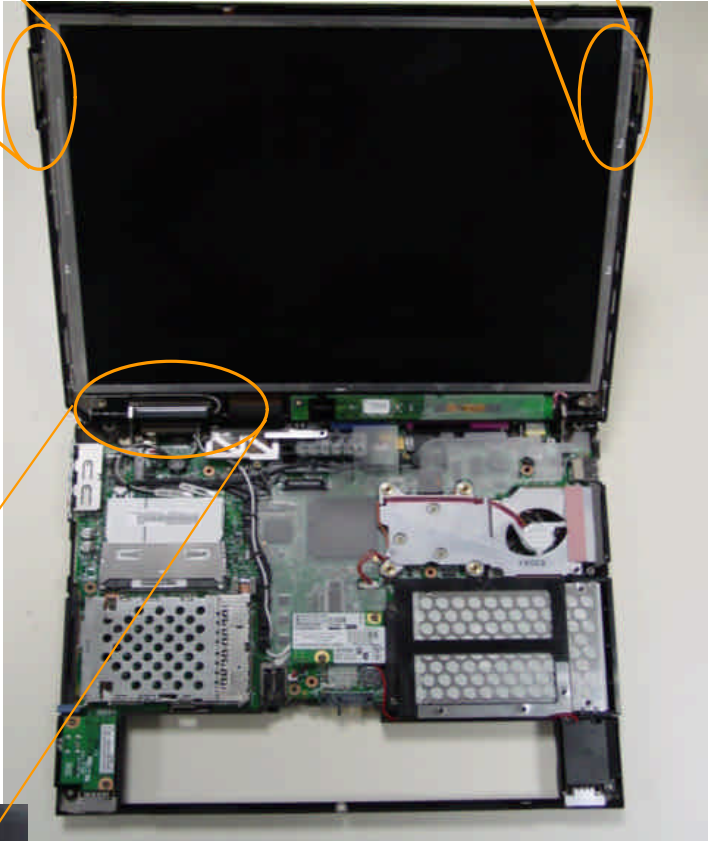
## Antenna Locations



**IEEE802.11b  
Wireless LAN  
Left antenna  
Inverted-F type  
Tx/Rx switching**

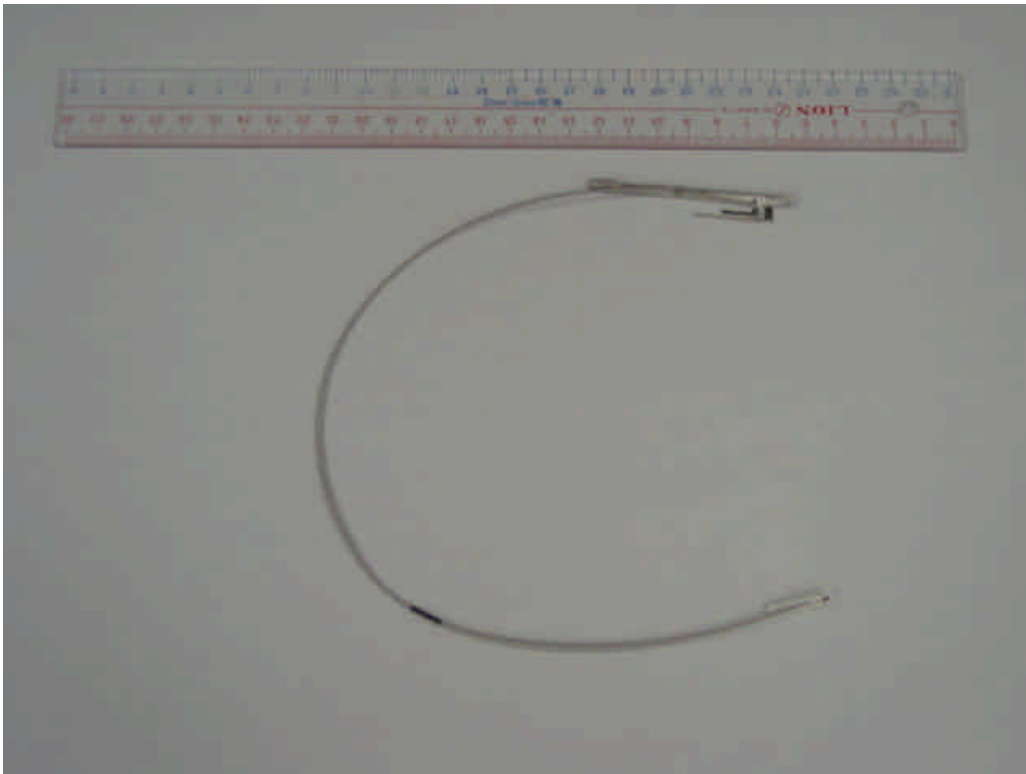
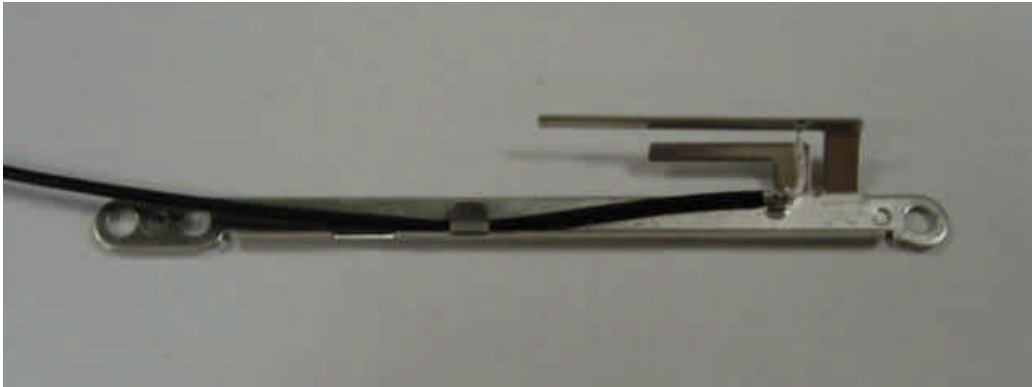


**IEEE802.11b  
Wireless LAN  
Right antenna  
Inverted-F type  
Rx only**



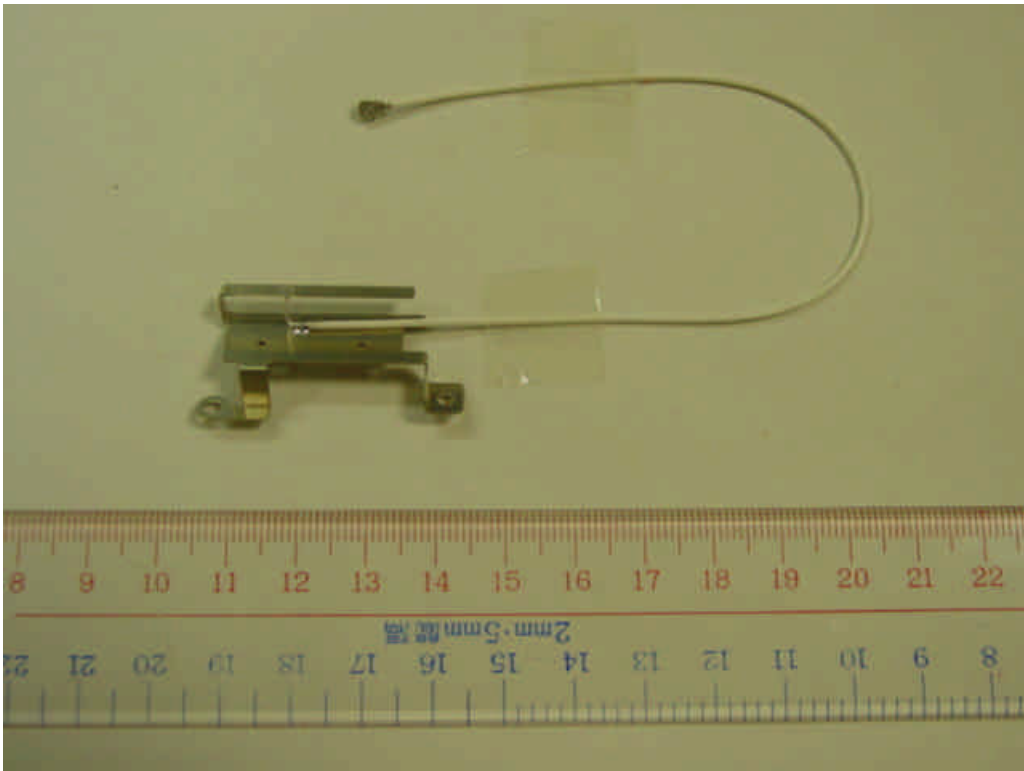
**Bluetooth Antenna (Tx/Rx)  
(Inverted-F type Antenna)**

## IEEE802.11b Wireless LAN Antenna (Inverted F type Antenna and Cable)



Left antenna (Tx/Rx switch) : IBM P/N: 46L4677 Cable : coax 380 mm  
Right antenna (Rx only) : IBM P/N: 46L4676 Cable : coax 520 mm

## Bluetooth Antenna (Inverted F type Antenna and Cable)



**Tx/Rx switch : IBM P/N: 46L4680 Cable : coax 185 mm**