



Part Number: 67P4567

Wireless Regulatory Notice for ThinkPad R32 Series

This notice is a supplementary document of the "ThinkPad® R32 Series Service and Troubleshooting Guide."

The ThinkPad R32 Series computer complies with the radio frequency and safety standards of any country or region in which it has been approved for wireless use. You are requested to install and use your ThinkPad computer in strict accordance with the instructions as described hereafter. Before you use the ThinkPad R32 computer, please read this document.

USA — Federal Communications Commission (FCC)

This device complies with part 15 of the FCC Rules. Operation is subject to the following two conditions:

1. This device may not cause harmful interference, and
2. this device must accept any interference received, including interference that may cause undesired operation.

i) FCC ID of Wireless Modules

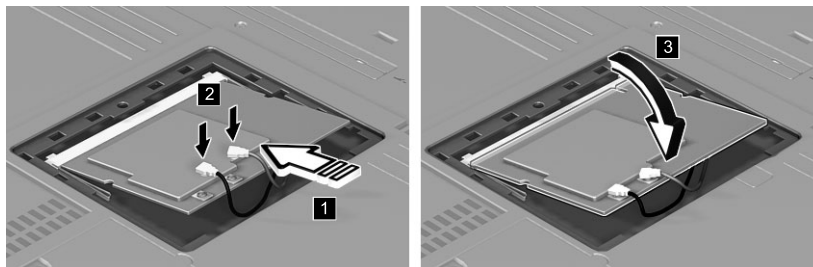
There is no FCC ID shown on the enclosure of this model. Instead you will find an indicator pointing the location of the FCC ID at the bottom side of your ThinkPad computer as shown below.

Note: The applicable cards are FCC ID: ANOU58H004 and ANOM3AWEB56GA.



ii) Installation of Wireless LAN Mini-PCI card

If no integrated wireless LAN Mini-PCI Card has been preinstalled in your ThinkPad computer, you can install one, provided by IBM as an option. Please plug the option wireless card into the Mini-PCI Card slot located at the bottom of the computer as shown below.



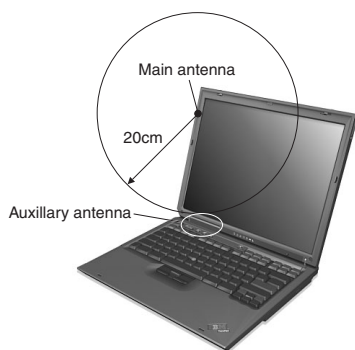
Attention for the BIOS Lock Protection

If you install an unauthorized wireless LAN Mini-PCI Card that was not approved for use with the computer, the computer does not start, but only displays an error message and emits beeps.

iii) The FCC RF Safety Requirement

The radiated output power of Wireless LAN Mini-PCI cards authorized for use with the computer are far below the FCC radio frequency exposure limits. Nevertheless, the computer shall be used in such a manner that the potential for human contact during normal operation is minimized as follows:

- a. Cisco Aironet Wireless 802.11b (FCC ID: ANOU58H004)



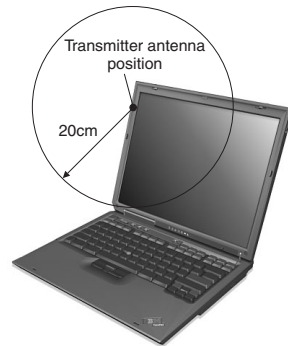
CAUTION:

To comply with FCC RF exposure compliance requirements, a separation distance of at least 20 cm (8 inches) must be maintained between the **main antenna** for the integrated Wireless LAN Mini-PCI card built into the screen section and all persons.

Also, the **auxiliary antenna** built in near the hinge location is used for the diversity radio frequency transmission of this wireless card. The RF transmission power from the antenna conforms to the FCC limit of SAR (Specific Absorption Rate) evaluation, so the separation distance between the auxiliary antenna and persons is not required.

Note: The diversity transmission does not function to emit radio frequencies simultaneously from both antennas. One of the antennas is selected automatically or manually (by users) to have good quality of radiocommunication.

- b. IBM High Rate Wireless LAN Mini-PCI Adapter with Modem II (FCC ID: ANOM3AWEB56GA)



CAUTION:

To comply with FCC RF exposure compliance requirements, a separation distance of at least 20 cm (8 inches) must be maintained between the antenna for the integrated Wireless LAN Mini-PCI card built into the screen section and all persons.

iv) Use of Wireless options

Your ThinkPad computer is approved for use of the integrated Wireless LAN Mini-PCI Card with one or more wireless option PC Cards in the PC Card slot and USB port simultaneously. Please make sure of the following conditions on use of option wireless cards.

1. Visit the IBM® site at www.ibm.com/pc/qtechinfo/MIGR-39377.html and confirm the updated list of RF option devices that have been approved to cooperate with the integrated wireless feature.
2. When you use any other RF option device that is not listed on the IBM site, all other wireless features including the integrated transmitter in your ThinkPad computer are required to be turned off.
3. Users are requested to follow the RF Safety instructions on wireless option devices that are included in the RF option device's user's manual.

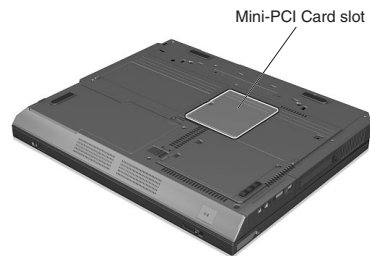
v) Interference Statement

An improper installation or unauthorized use may cause harmful interference to radio communications. Also, any tampering of the internal antenna will void the FCC certification and your warranty. Refer to "Appendix D. Electronic Emission Notices" of the ThinkPad R32 Series Service and Troubleshooting Guide for more detail.

Canada — Industry Canada (IC)

Certification number

There is no certification number of Industry Canada shown on this model. The number for the integrated wireless LAN Mini-PCI Card is affixed on the Card installed in the Mini-PCI Card slot under the customer access panel, as shown below.



The term "IC" before the equipment certification number only signifies that the Industry Canada technical specifications were met.

Attention: You can install or remove the wireless LAN Mini-PCI Card by yourself. If you install a wireless LAN Mini-PCI Card that is not authorized for the computer, the computer does not start, but only displays an error message and emit beeps.

Low Power License-Exempt Radiocommunication Devices (RSS-210)

Operation is subject to the following two conditions: (1) this device may not cause interference, and (2) this device must accept any interference, including interference that may cause undesired operation of the device.

To prevent radio interference to the licensed service, this device is intended to be operated indoors and away from windows to provide maximum shielding. Equipment (or its transmit antenna) that is installed outdoors is subject to licensing.

Numéro d'homologation signifie

Ce modèle ne comporte pas de numéro d'homologation Industrie Canada. Le numéro d'homologation pour la carte mini-PCI pour réseau local sans fil est collé sur la carte installée dans l'emplacement correspondant, comme indiqué dans la figure précédente.

Le terme «IC» avant le numéro d'homologation signifie seulement que les normes d'Industrie Canada ont été respectées.

Attention : Vous pouvez installer ou retirer la carte mini-PCI pour réseau local sans fil vous-même. Si vous avez installé une carte de ce type qui n'est pas homologuée pour l'ordinateur, l'ordinateur ne démarrera pas ; un message d'erreur sera affiché et des bips sonores seront émis.

Permis d'émission à faible puissance - Cas des appareils de communications radio (CNR-210)

Le fonctionnement de ce type d'appareil est soumis aux deux conditions suivantes : (1) Cet appareil peut perturber les communications radio, et (2) cet appareil doit supporter toute perturbation, y compris les perturbations qui pourraient provoquer un dysfonctionnement.

Pour empêcher que cet appareil cause du brouillage au service faisant l'objet d'une licence, il doit être utilisé à l'intérieur et devrait être placé loin des fenêtres afin de fournir un écran de blindage maximal. Si le matériel (ou son antenne d'émission) est installé à l'extérieur, il doit faire l'objet d'une licence.

Europe — EU Declaration of Conformity for Cisco Aironet Wireless 802.11b



Products intended for sale within the European Union are marked with the Conformité Européenne (CE) Marking, which indicates compliance with the applicable Directives and European Norms, and amendments, identified below.

- Hereby, IBM Corporation, declares that this Cisco Aironet Wireless 802.11b is in compliance with the essential requirements and other relevant provisions of Directive 1999/5/EC.
- IBM Corporation vakuuttaa täten että Cisco Aironet Wireless 802.11b tyyppinen laite on direktiivin 1999/5/EY oleellisten vaatimusten ja sitä koskevien direktiivin muiden ehtojen mukainen.
- Hierbij verklaart IBM Corporation dat het toestel Cisco Aironet Wireless 802.11b overeenstemming is met de essentiële eisen en de andere relevante bepalingen van richtlijn 1999/5/EG.
- Bij deze verklaart IBM Corporation dat deze Cisco Aironet Wireless 802.11b voldoet aan de essentiële eisen en aan de overige relevante bepalingen van Richtlijn 1999/5/EC.
- Par la présente IBM Corporation déclare que l'appareil Cisco Aironet Wireless 802.11b est conforme aux exigences essentielles et aux autres dispositions pertinentes de la directive 1999/5/CE.

- Par la présente, IBM Corporation déclare que ce Cisco Aironet Wireless 802.11b est conforme aux exigences essentielles et aux autres dispositions de la directive 1999/5/CE qui lui sont applicables.
- Härmed intygar IBM Corporation att denna Cisco Aironet Wireless 802.11b står i överensstämmelse med de väsentliga egenskapskrav och övriga relevanta bestämmelser som framgår av direktiv 1999/5/EG.
- Undertegnede IBM Corporation erklærer herved, at følgende udstyr Cisco Aironet Wireless 802.11b overholder de væsentlige krav og øvrige relevante krav i direktiv 1999/5/EF.
- Hiermit erklärt IBM Corporation, dass sich dieses Cisco Aironet Wireless 802.11b in Übereinstimmung mit den grundlegenden Anforderungen und den anderen relevanten Vorschriften der Richtlinie 1999/5/EG befindet. (BMWi)
- Hiermit erklärt IBM Corporation die Übereinstimmung des Gerätes Cisco Aironet Wireless 802.11b mit den grundlegenden Anforderungen und den anderen relevanten Festlegungen der Richtlinie 1999/5/EG. (Wien)
- ΜΕ ΤΗΝ ΠΑΡΟΥΣΑ IBM Corporation ΔΗΛΩΝΕΙ ΟΤΙ Cisco Aironet Wireless 802.11b ΣΥΜΜΟΡΦΩΝΕΤΑΙ ΠΡΟΣ ΤΙΣ ΟΥΣΙΩΔΕΙΣ ΑΠΑΙΤΗΣΕΙΣ ΚΑΙ ΤΙΣ ΛΟΙΠΕΣ ΣΧΕΤΙΚΕΣ ΔΙΑΤΑΞΕΙΣ ΤΗΣ ΟΔΗΓΙΑΣ 1999/5/ΕΚ.
- Con la presente IBM Corporation dichiara che questo Cisco Aironet Wireless 802.11b è conforme ai requisiti essenziali ed alle altre disposizioni pertinenti stabilite dalla direttiva 1999/5/CE.
- Por medio de la presente IBM Corporation declara que el Cisco Aironet Wireless 802.11b cumple con los requisitos esenciales y cualesquiera otras disposiciones aplicables o exigibles de la Directiva 1999/5/CE.
- IBM Corporation declara que este Cisco Aironet Wireless 802.11b está conforme com os requisitos essenciais e outras provisoes da Directiva 1999/5/CE.



IBM Japan Ltd.
1623-14, Shimotsuruma, Yamato-shi
Kanagawa-ken 242-8502, Japan

CE Declaration of Conformity

We, IBM Japan Ltd
1623-14 Shimotsuruma Yamato-shi
Kanagawa-ken 242-8502 Japan

Declare under our sole responsibility that the **Cisco Aironet Wireless 802.11b (AIR-MPI350-U58H009)** is in conformity with the relevant requirements of Directive 1999/5/EC

The conformity has been assessed through the procedure detailed in Annex IV of the directive, with the involvement of the following Notified Body: Radio Frequency Investigation Ltd, Ewhurst Park, Ramsdell, Basingstoke, RG26 5RQ, UK

Identification mark: 0889

The standards tested are:

EU Council Recommendation 1999/519/EC, dated 12 July 1999
EN 60950:1992 + A1:1993, A2:1993, A3:1995, A4:1997, A11:1997
EN 300 328-1 V1.2.2 (2000-07); EN 300 328-2 V1.1.1 (2000-07)

The technical documentation relevant to the above equipment is held at:

CER IBM France
Homologation and Type Approval department
Le plan du bois
06610 La Gaude
France

Arimasa Naitoh
Director of Portable Systems

April 22, 2002
(date)

(signature)

Council Recommendation 1999/519/EC

The Cisco Aironet Wireless 802.11b is considered to operate within the limits required by European Council Recommendation 1999/519/EC, on the limitation of exposure of the general public to ElectroMagnetic Fields.

European Economic Area Restrictions

Throughout the European Economic Area, authorization for use is restricted as follows:

- Belgie B	Gebruik buiten gebouw alleen op kanalen 10 (2462 MHz) en 11 (2467 MHz). Voor privé-gebruik buiten gebouw over publieke grond over afstand kleiner dan 300m geen registratie bij BIPT/IBPT nodig; voor gebruik over afstand groter dan 300m is wel registratie bij BIPT/IBPT nodig. Voor publiek gebruik buiten gebouwen is licentie van BIPT/IBPT verplicht. Voor registratie of licentie kunt u contact opnemen met BIPT.
- Belgium B	For outdoor usage only channel 10 (2462 MHz) and 11 (2467 MHz) is allowed. For private usage outside buildings across public grounds over less than 300m no special registration with IBPT/BIPT is required. Registration to IBPT/BIPT is required for private usage outside buildings across public grounds over more than 300m. An IBPT/BIPT licence is required for public usage outside building. For registration and license please contact IBPT/BIPT.
- Belgique B	L'utilisation en extérieur est autorisé sur le canal 10 (2462 MHz) et 11 (2467 MHz). Dans le cas d'une utilisation privée, à l'extérieur d'un bâtiment, au-dessus d'un espace public, aucun enregistrement n'est nécessaire pour une distance de moins de 300m. Pour une distance supérieure à 300m un enregistrement auprès de l'IBPT est requise. Pour une utilisation publique à l'extérieur de bâtiments, une licence de l'IBPT est requise. Pour les enregistrements et licences, veuillez contacter l'IBPT.
- France F	Bande de fréquence restreinte : seuls les canaux 10 à 11 (2457 et 2462 MHz respectivement) doivent être utilisés en France. Toute utilisation, qu'elle soit intérieure ou extérieure, est soumise à autorisation. Vous pouvez contacter l'Autorité de Régulation des Télécommunications (http://www.art-telecom.fr) pour la procédure à suivre.

- France F	Restricted frequency band: only channels 10 and 11 (2457 MHz and 2462 MHz respectively) may be used in France. License required for every installation, indoor and outdoor installations. Please contact ART for procedure to follow.
- Deutschland D	Anmeldung im Outdoor-Bereich notwendig, aber nicht genehmigungspflichtig. Bitte mit Händler die Vorgehensweise abstimmen.
- Germany D	License required for outdoor installations. Check with reseller for procedure to follow.
- Italia I	E' necessaria la concessione ministeriale anche per l'uso interno. Verificare con i rivenditori la procedura da seguire. L'uso per installazione in esterni non e' permessa.
- Italy I	License required for indoor use. Use with outdoor installations not allowed.
- the Netherlands NL	License required for outdoor installations. Check with reseller for procedure to follow.
- Nederland NL	Licentie verplicht voor gebruik met buitenantennes. Neem contact op met verkoper voor juiste procedure.

Europe — EU Declaration of Conformity for IBM High rate wireless LAN mini PCI Adapter with modem II

- Hereby, Intel, declares that this IBM High rate wireless LAN mini PCI Adapter with modem II is in compliance with the essential requirements and other relevant provisions of Directive 1999/5/EC.
- Intel vakuuttaa täten että IBM High rate wireless LAN mini PCI Adapter with modem II tyyppinen laite on direktiivin 1999/5/EY oleellisten vaatimusten ja sitä koskevien direktiivin muiden ehtojen mukainen.
- Hierbij verklaart Intel dat het toestel IBM High rate wireless LAN mini PCI Adapter with modem II in overeenstemming is met de essentiële eisen en de andere relevante bepalingen van richtlijn 1999/5/EG.
- Bij deze verklaart Intel dat IBM High rate wireless LAN mini PCI Adapter with modem II voldoet aan de essentiële eisen en aan de overige relevante bepalingen van Richtlijn 1999/5/EC.
- Par la présente Intel déclare que l'appareil IBM High rate wireless LAN mini PCI Adapter with modem II est conforme aux exigences essentielles et aux autres dispositions pertinentes de la directive 1999/5/CE.

- Par la présente, Intel déclare que ce IBM High rate wireless LAN mini PCI Adapter with modem II est conforme aux exigences essentielles et aux autres dispositions de la directive 1999/5/CE qui lui sont applicables.
- Härmed intygar Intel att denna IBM High rate wireless LAN mini PCI Adapter with modem II står i överensstämmelse med de väsentliga egenskapskrav och övriga relevanta bestämmelser som framgår av direktiv 1999/5/EG.
- Undertegnede Intel erklærer herved, at følgende udstyr IBM High rate wireless LAN mini PCI Adapter with modem II overholder de væsentlige krav og øvrige relevante krav i direktiv 1999/5/EF.
- Hiermit erklärt Intel, dass sich dieser/diese/dieses IBM High rate wireless LAN mini PCI Adapter with modem II in Übereinstimmung mit den grundlegenden Anforderungen und den anderen relevanten Vorschriften der Richtlinie 1999/5/EG befindet. (BMW)
- Hiermit erklärt Intel die Übereinstimmung des Gerätes IBM High rate wireless LAN mini PCI Adapter with modem II mit den grundlegenden Anforderungen und den anderen relevanten Festlegungen der Richtlinie 1999/5/EG. (Wien)
- ΜΕ ΤΗΝ ΠΑΡΟΥΣΑ Intel ΔΗΛΩΝΕΙ ΟΤΙ IBM High rate wireless LAN mini PCI Adapter with modem II ΣΥΜΜΟΡΦΩΝΕΤΑΙ ΠΡΟΣ ΤΙΣ ΟΥΣΙΩΔΕΙΣ ΑΠΑΙΤΗΣΕΙΣ ΚΑΙ ΤΙΣ ΛΟΙΠΕΣ ΣΧΕΤΙΚΕΣ ΔΙΑΤΑΞΕΙΣ ΤΗΣ ΟΔΗΓΙΑΣ 1999/5/ΕΚ.
- Con la presente Intel dichiara che questo IBM High rate wireless LAN mini PCI Adapter with modem II è conforme ai requisiti essenziali ed alle altre disposizioni pertinenti stabilite dalla direttiva 1999/5/CE.
- Por medio de la presente Intel declara que el IBM High rate wireless LAN mini PCI Adapter with modem II cumple con los requisitos esenciales y cualesquiera otras disposiciones aplicables o exigibles de la Directiva 1999/5/CE.
- Intel declara que este IBM High rate wireless LAN mini PCI Adapter with modem II está conforme com os requisitos essenciais e outras provisões da Directiva 1999/5/CE.





Declaration of Conformity

We Xircom, Inc. of 2300 Corporate Center Drive, Thousand Oaks, CA 91320 declare that the 802.11b Wireless Ethernet + AC'97 Modem Mini PCI Type IIIA Adapter, model: **M3AWEB56GA** is in conformance with the essential requirements of the European Council Directive:

1999/5/EC (R&TTE)	Radio and Telecommunications Terminal Equipment Directive (Following Annex II and IV of this Directive)
-------------------	--

The essential requirements being:

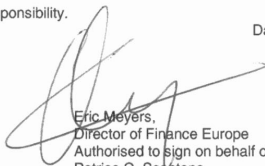
Safety of the user (article 3.1.a)	Following directive 73/23/EEC
Electromagnetic Compatibility (article 3.1.b)	Following directive 89/336/EEC
Effective use of the spectrum (article 3.2)	Following notified body opinion #: E812840N-EO from CETECOM ICT services GmbH (0682)

This declaration is based upon compliance to the following standards:

EN 60950 (1992 2 nd Edition with amendments 1, 2, 3, 4)	Safety Information Technology Equipment, Including Electrical Business Equipment.
EN 301 489-1, Aug. 2000 EN 301 489-17, Sept. 2000	Electromagnetic compatibility and Radio spectrum Matters (ERM); Electromagnetic Compatibility (EMC) standard for radio equipment and services: Part 1: Common technical requirements Part 17: Specific conditions for Wideband Data and Hiperlan equipment
EN 300 328-2, July 2000	Electromagnetic compatibility and Radio Spectrum Matters (ERM); Wideband transmission systems; Data transmission equipment operating in the 2,4 GHz ISM band and using spread spectrum modulation techniques. Part 2: Harmonized EN covering essential requirements under article 3.2 of the R&TTE Directive
EN 55022 (C.I.S.P.R. 22 Class B)	RF Emissions Control
EN 55024 (1998)	Information Technology Equipment – Immunity Characteristics – Limits & methods of measurement
TBR 21	Analogue PSTN Standard with Advisory Notes in ETSI Guides EG 201 120 and EG 201 121
EG 201 120, & 201 121	E.T.S.I. ATAAB and National Advisory Notes for TBR 21

This declaration is made under our sole responsibility.
Authorized Signature:

Date: 30 November, 2001



Eric Meyers,
Director of Finance Europe
Authorised to sign on behalf of
Patrice C. Scantena
Director of Xircom Inc.

Throughout the European Economic Area, authorization for use is restricted as follows

- Belgie B	<p>Gebruik buiten gebouw alleen op kanalen 10 (2462 MHz) en 11 (2467 MHz). Voor privé-gebruik buiten gebouw over publieke grond over afstand kleiner dan 300m geen registratie bij BIPT/IBPT nodig; voor gebruik over afstand groter dan 300m is wel registratie bij BIPT/IBPT nodig. Voor publiek gebruik buiten gebouwen is licentie van BIPT/IBPT verplicht. Voor registratie of licentie kunt u contact opnemen met BIPT.</p>
- Belgium B	<p>For outdoor usage only channel 10 (2462 MHz) and 11 (2467 MHz) is allowed. For private usage outside buildings across public grounds over less than 300m no special registration with IBPT/BIPT is required. Registration to IBPT/BIPT is required for private usage outside buildings across public grounds over more than 300m. An IBPT/BIPT licence is required for public usage outside building. For registration and license please contact IBPT/BIPT.</p>
- Belgique B	<p>L'utilisation en extérieur est autorisé sur le canal 10 (2462 MHz) et 11 (2467 MHz). Dans le cas d'une utilisation privée, à l'extérieur d'un bâtiment, au-dessus d'un espace public, aucun enregistrement n'est nécessaire pour une distance de moins de 300m. Pour une distance supérieure à 300m un enregistrement auprès de l'IBPT est requise. Pour une utilisation publique à l'extérieur de bâtiments, une licence de l'IBPT est requise. Pour les enregistrements et licences, veuillez contacter l'IBPT.</p>
- France F	<p>Bande de fréquence restreinte : seuls les canaux 10 à 11 (2457 et 2462 MHz respectivement) doivent être utilisés en France. Toute utilisation, qu'elle soit intérieure ou extérieure, est soumise à autorisation. Vous pouvez contacter l'Autorité de Régulation des Télécommunications (http://www.art-telecom.fr) pour la procédure à suivre.</p>
- France F	<p>Restricted frequency band: only channels 10 and 11 (2457 MHz and 2462 MHz respectively) may be used in France. License required for every installation, indoor and outdoor installations. Please contact ART for procedure to follow.</p>

- Deutschland D	Anmeldung im Outdoor-Bereich notwendig, aber nicht genehmigungspflichtig. Bitte mit Händler die Vorgehensweise abstimmen.
- Germany D	License required for outdoor installations. Check with reseller for procedure to follow.
- Italia I	E' necessaria la concessione ministeriale anche per l'uso interno. Verificare con i rivenditori la procedura da seguire. L'uso per installazione in esterni non e' permessa.
- Italy I	License required for indoor use. Use with outdoor installations not allowed.
- the Netherlands NL	License required for outdoor installations. Check with reseller for procedure to follow.
- Nederland NL	Licentie verplicht voor gebruik met buitenantennes. Neem contact op met verkoper voor juiste procedure.

Notice for Users in India

The equipment type approval does not imply that the frequencies will be cleared automatically/operating license will be granted as these are matters to be examined on case by case basis on the receipt of the application to WPC.

Notice for Users in Singapore

The Wireless LAN Mini-PCI Adapter included in this equipment is for use only within the confined area of a building.