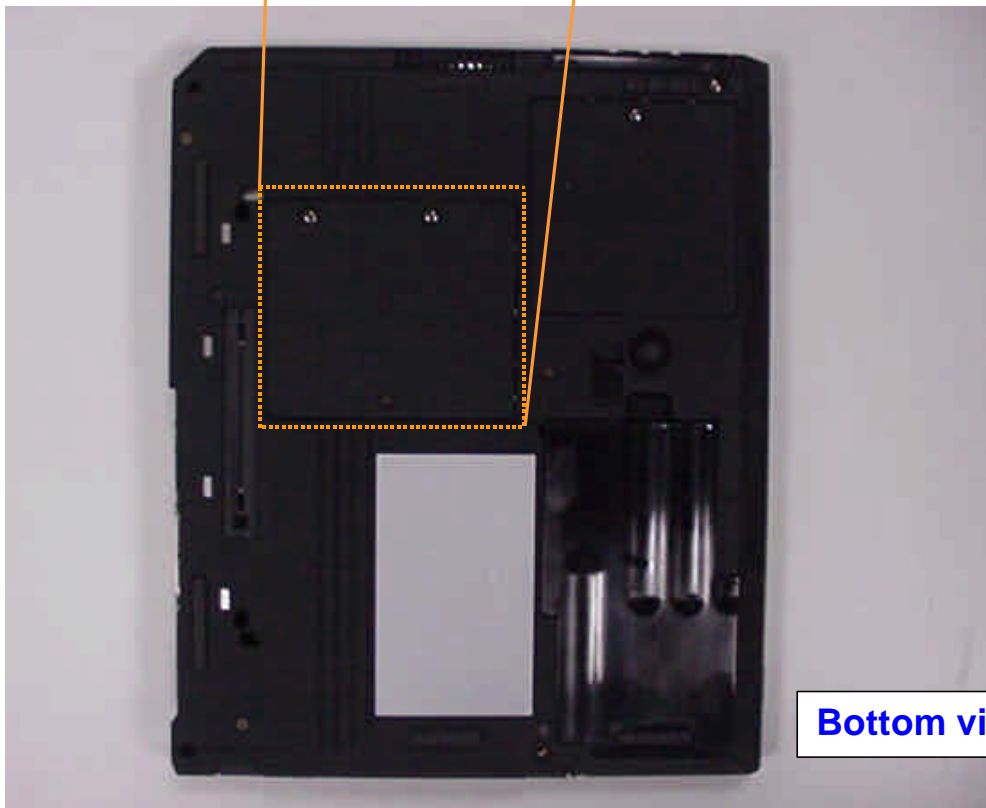
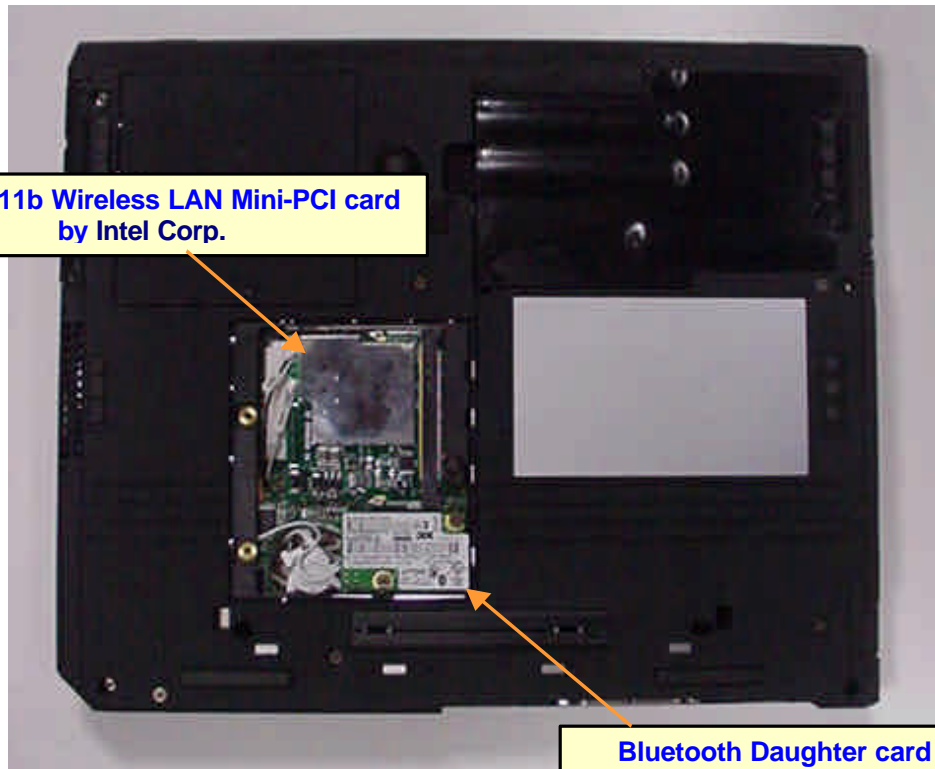


Internal Photos



Bottom view

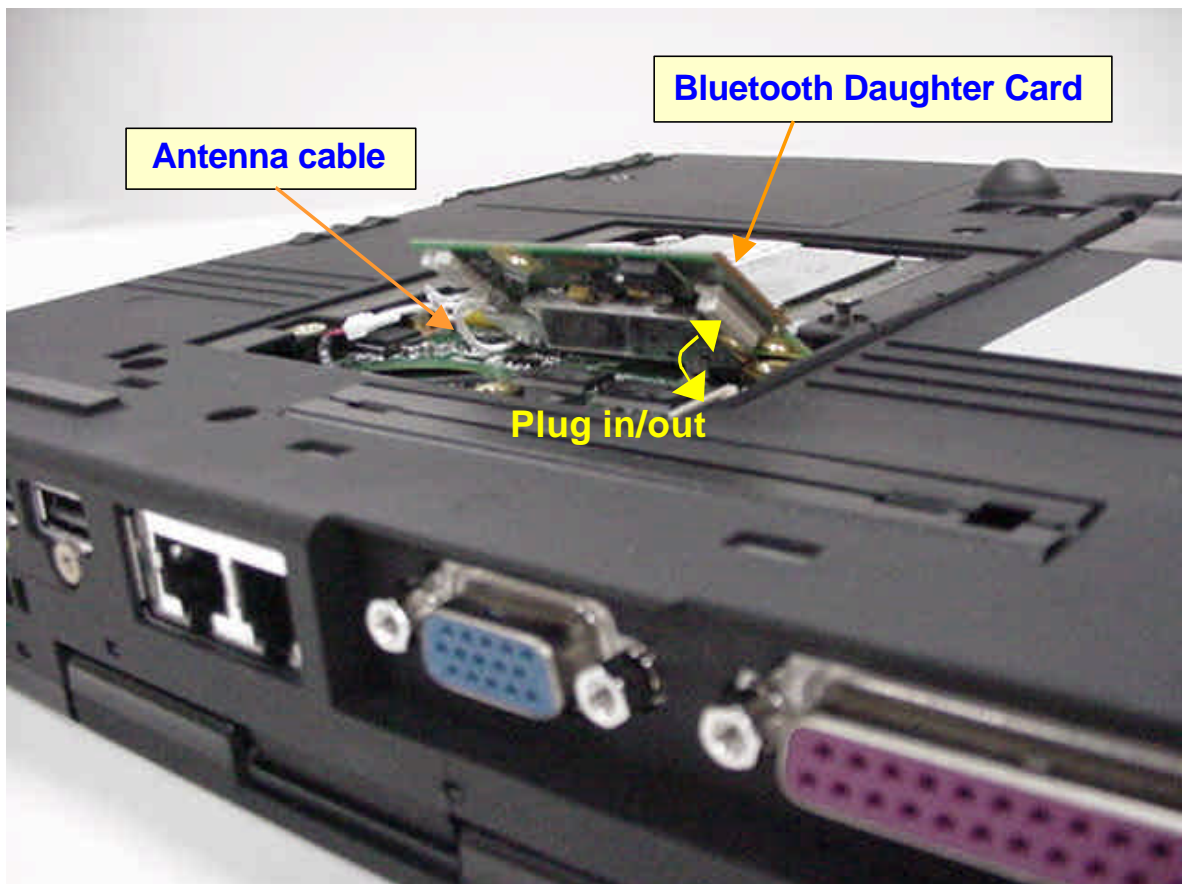


IEEE802.11b Wireless LAN Mini-PCI card
by Intel Corp.

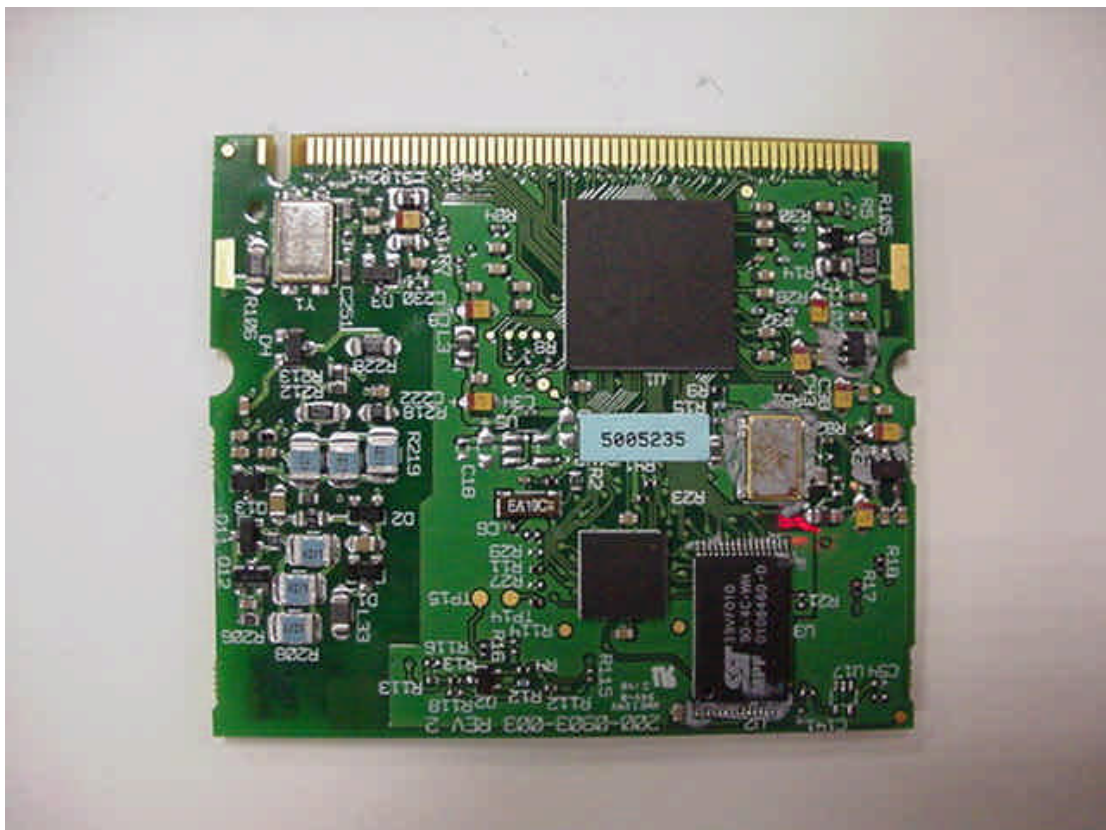
Bluetooth Daughter card
by TDK Systems Europe Ltd.

Bottom view, rear side ↑

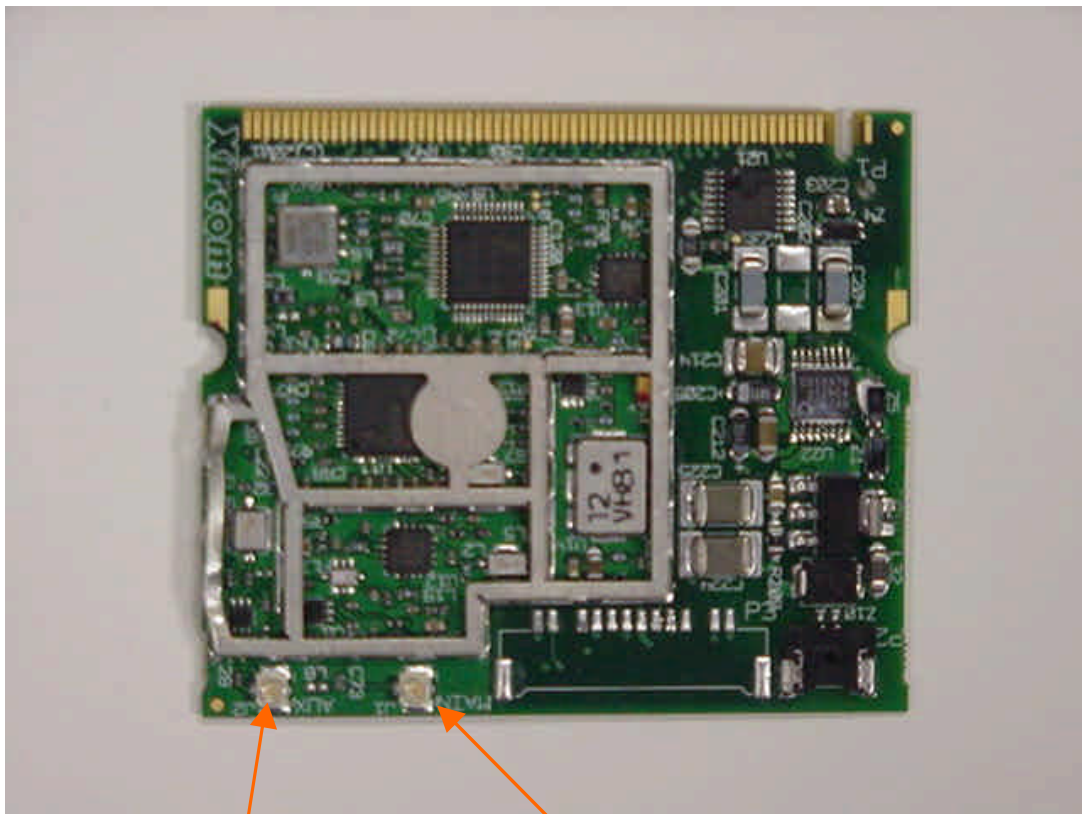
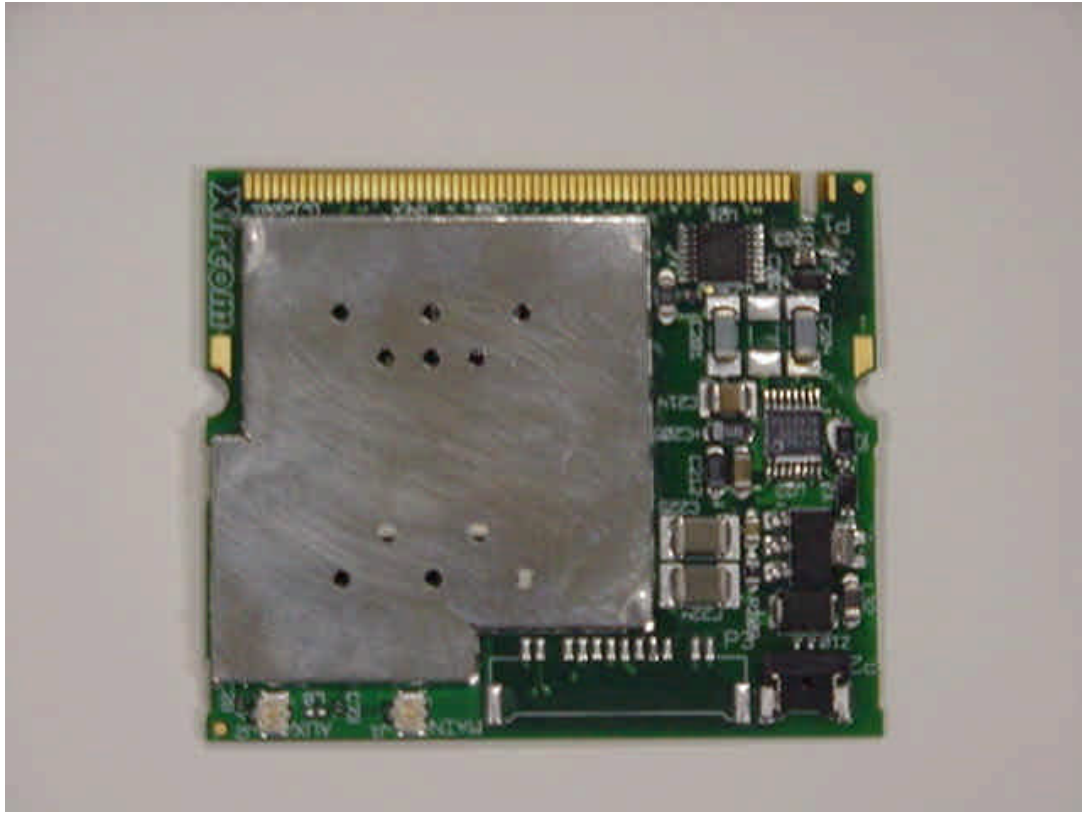




IEEE802.11b Wireless LAN Mini-PCI Adapter (Back side)



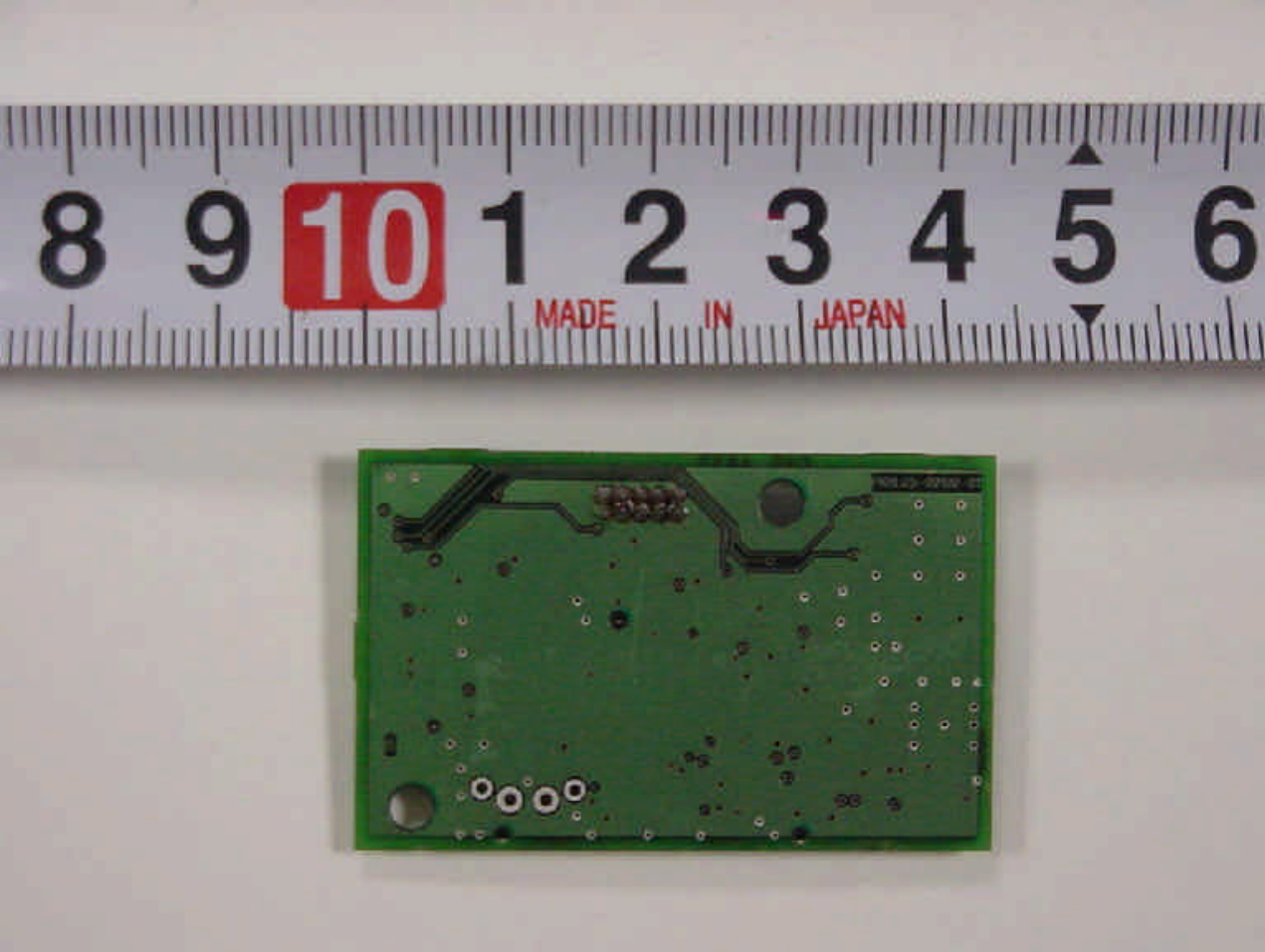
IEEE802.11b Wireless LAN Mini-PCI Adapter (Top side)



Right Antenna terminal

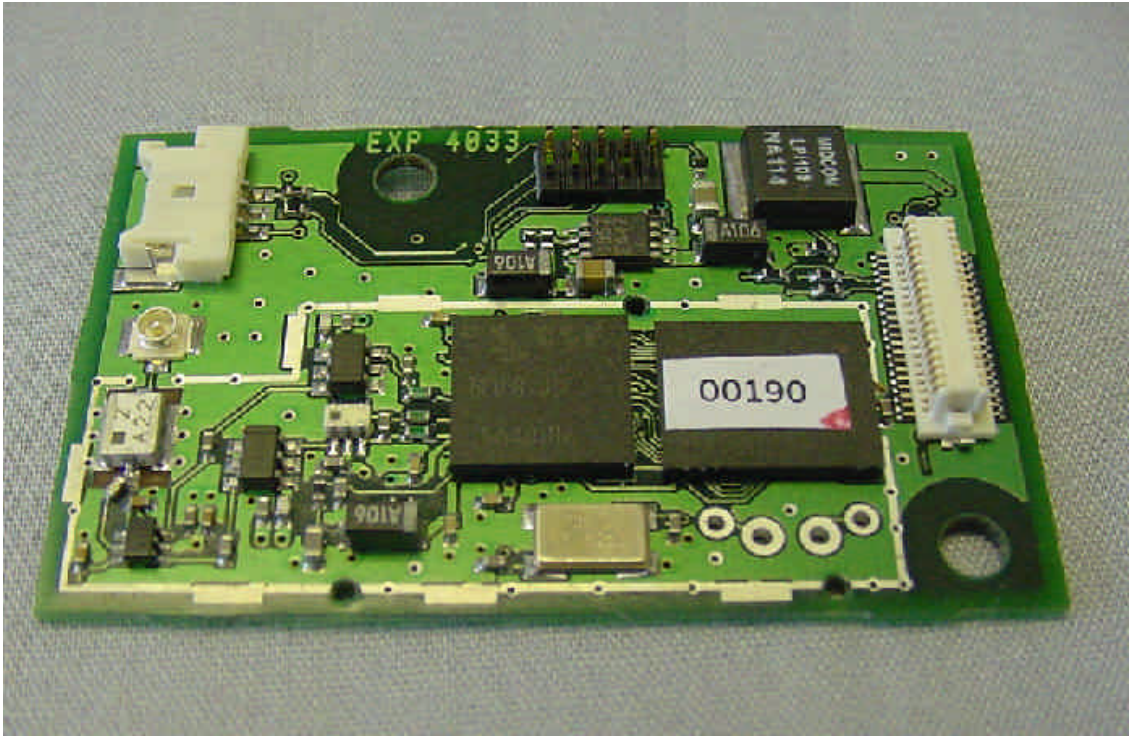
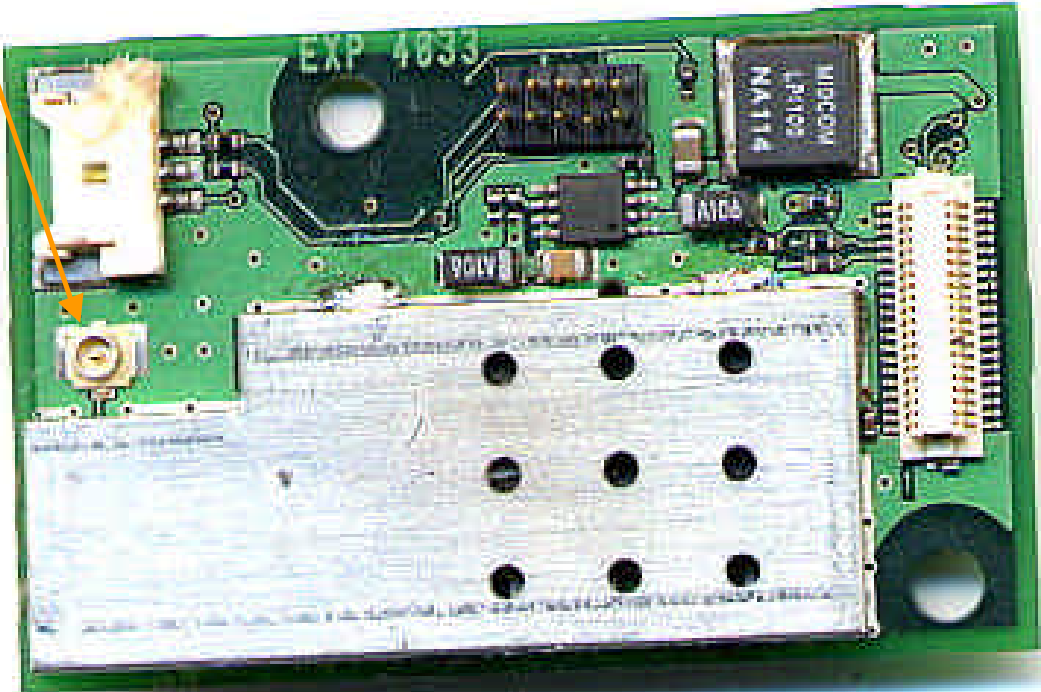
Left antenna terminal

Bluetooth Daughter Card (Top side)

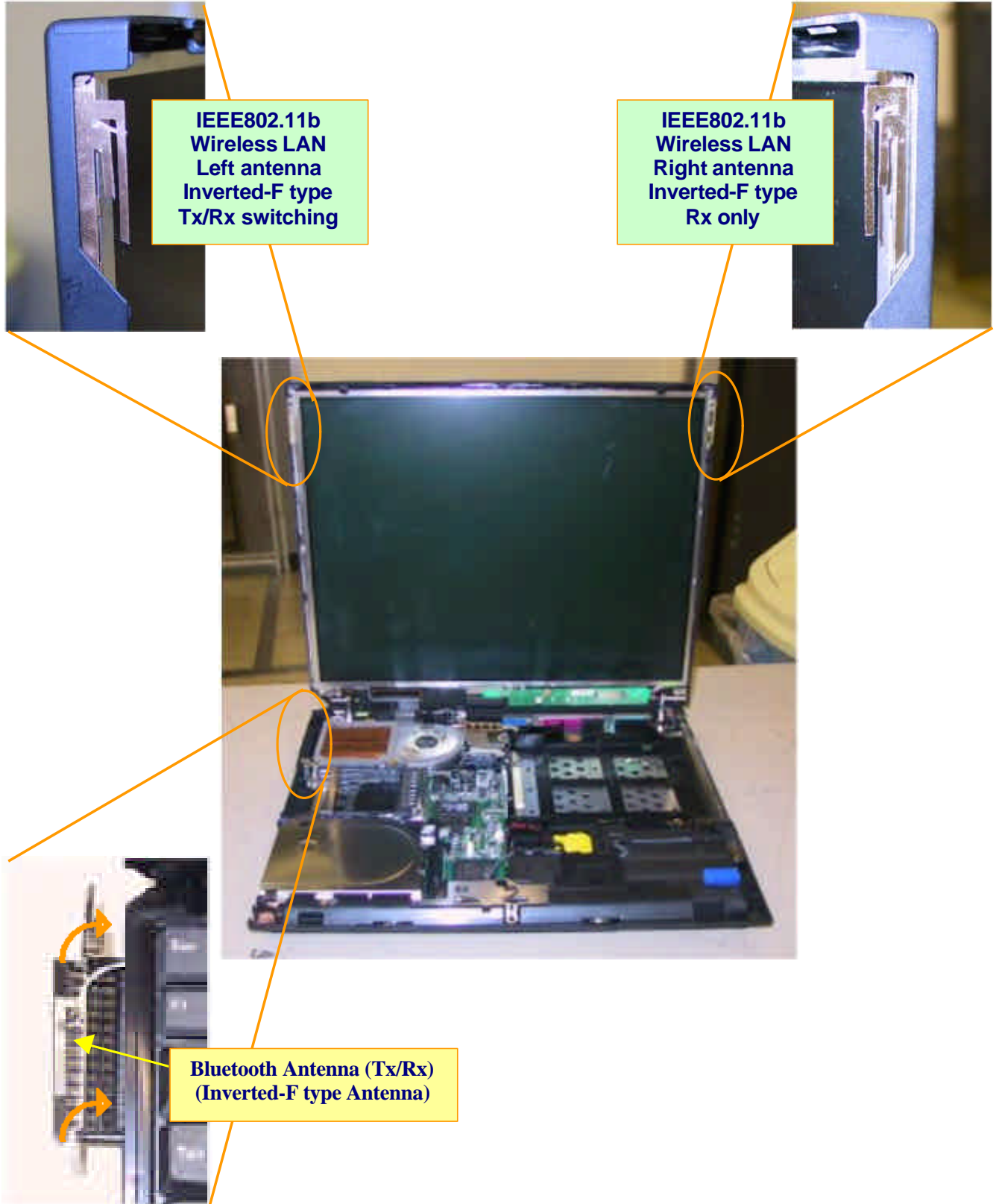


Bluetooth Daughter Card (Back side)

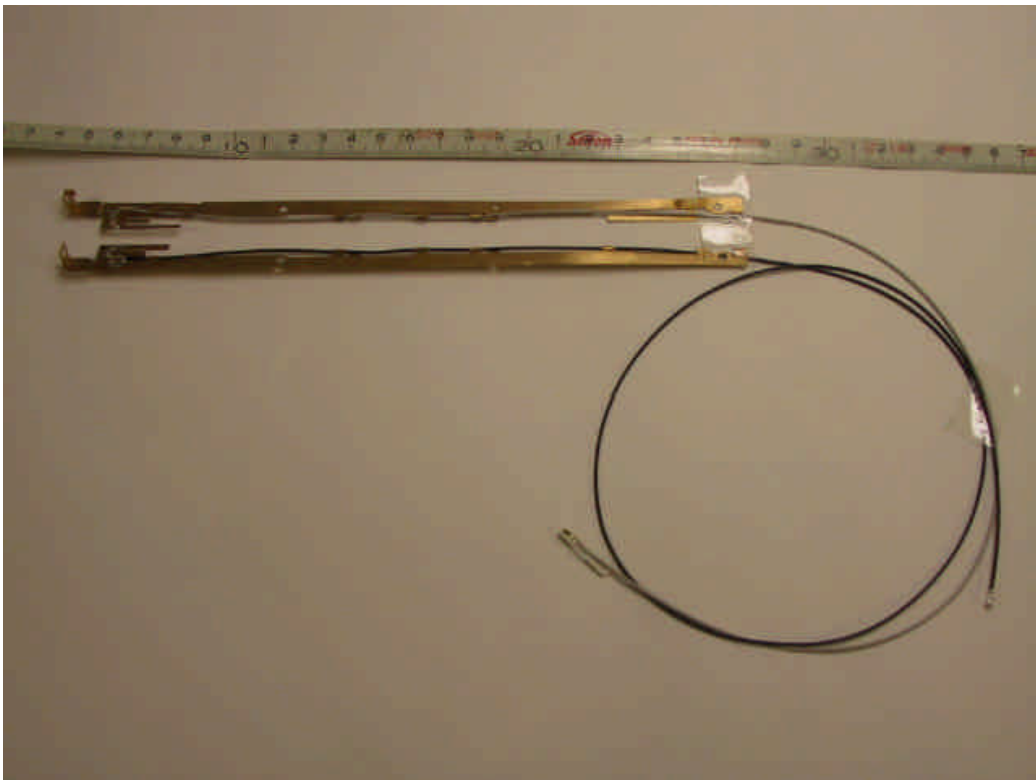
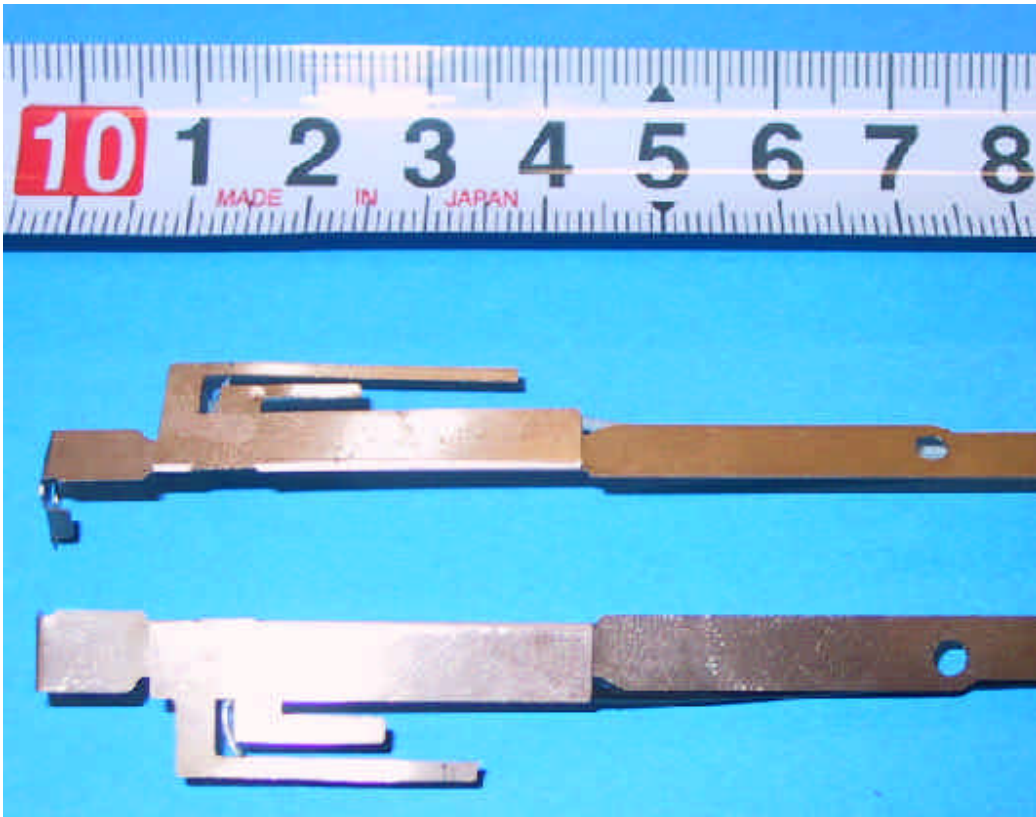
Antenna terminal



Antenna Locations



IEEE802.11b Wireless LAN Antenna (Inverted F type Antenna and Cable)



Left antenna (Tx/Rx switch) : IBM P/N: 46L4819 Cable : coax 560 mm
Right antenna (Rx only) : IBM P/N: 46L4818 Cable : coax 800 mm

Bluetooth Antenna (Inverted F type Antenna and Cable)



Tx/Rx switch : IBM P/N: 46L4932 Cable : coax 125 mm