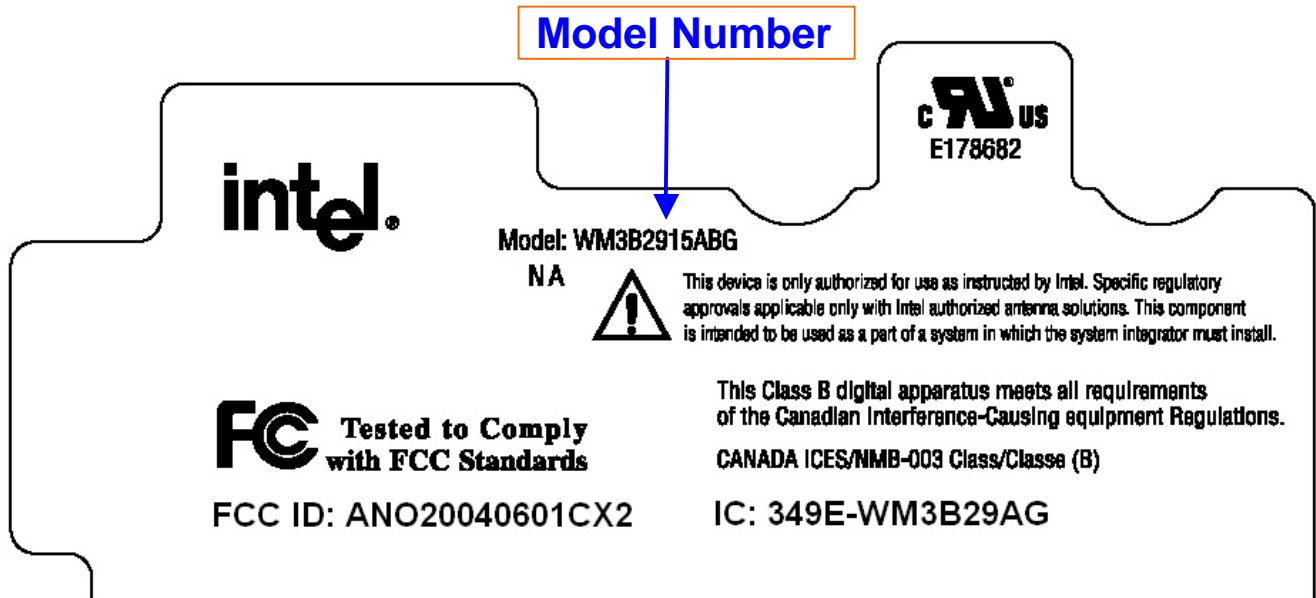


# Product Labeling

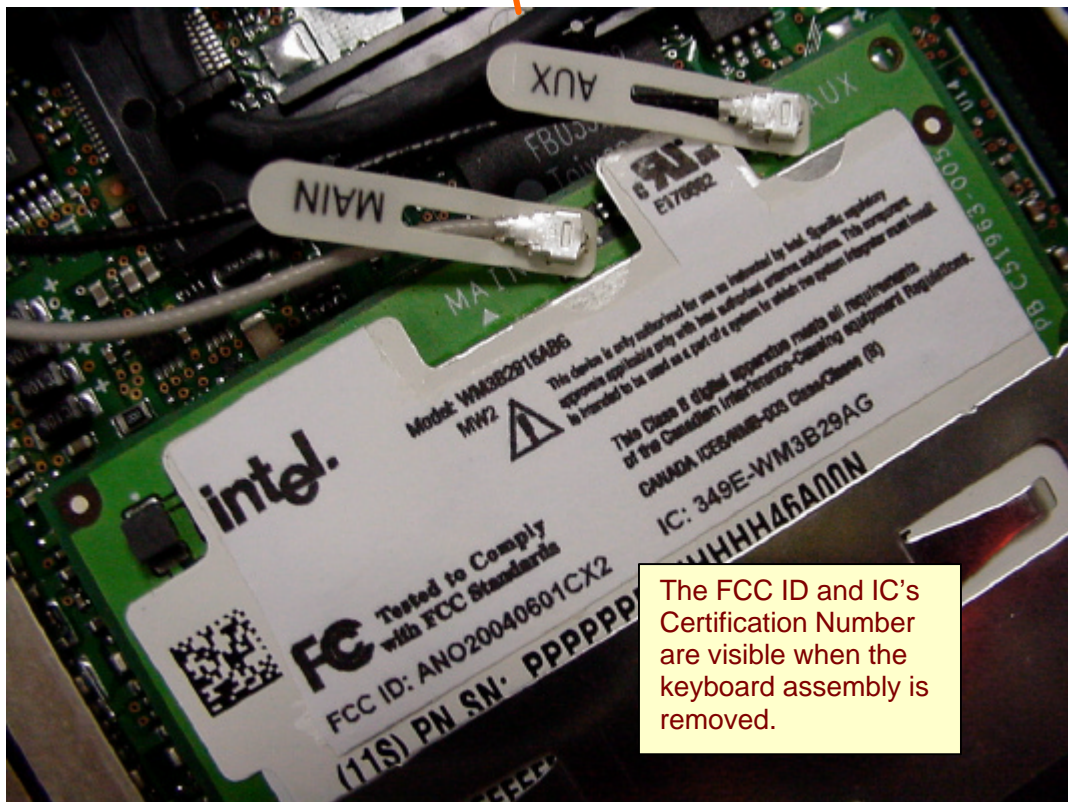
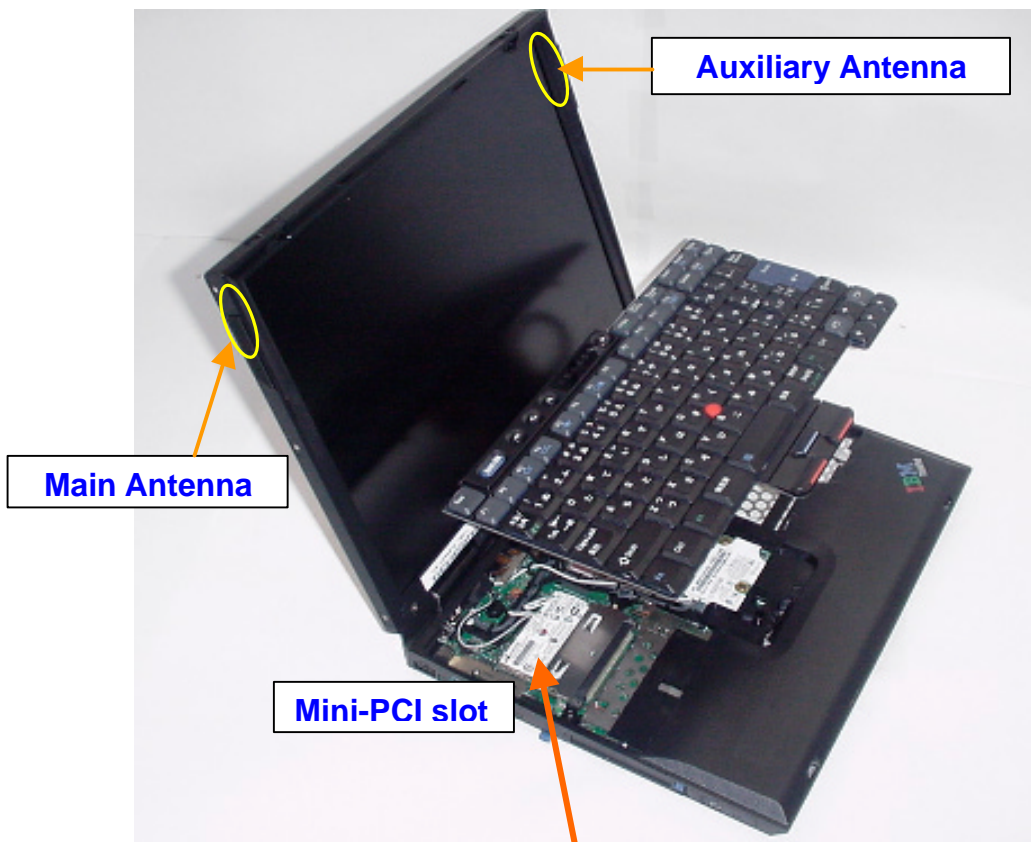


Top side



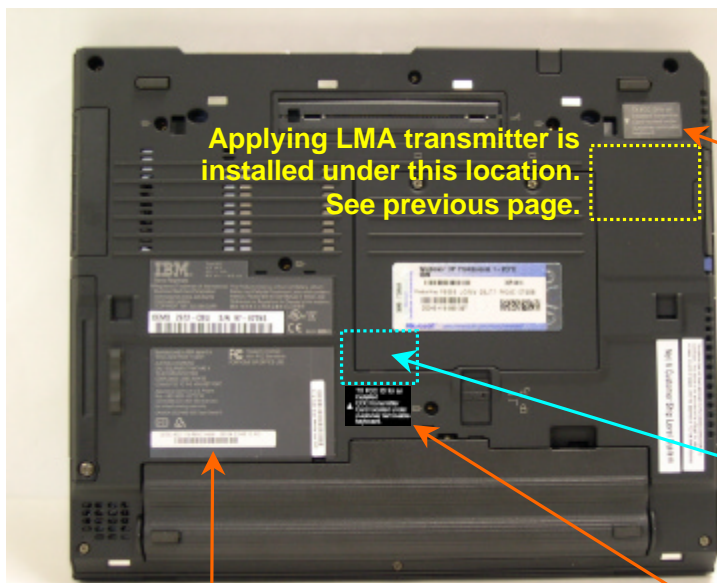
# Labeling of new Host PC devices

## IBM ThinkPad X30 Series






Bottom side of IBM ThinkPad X30 Series



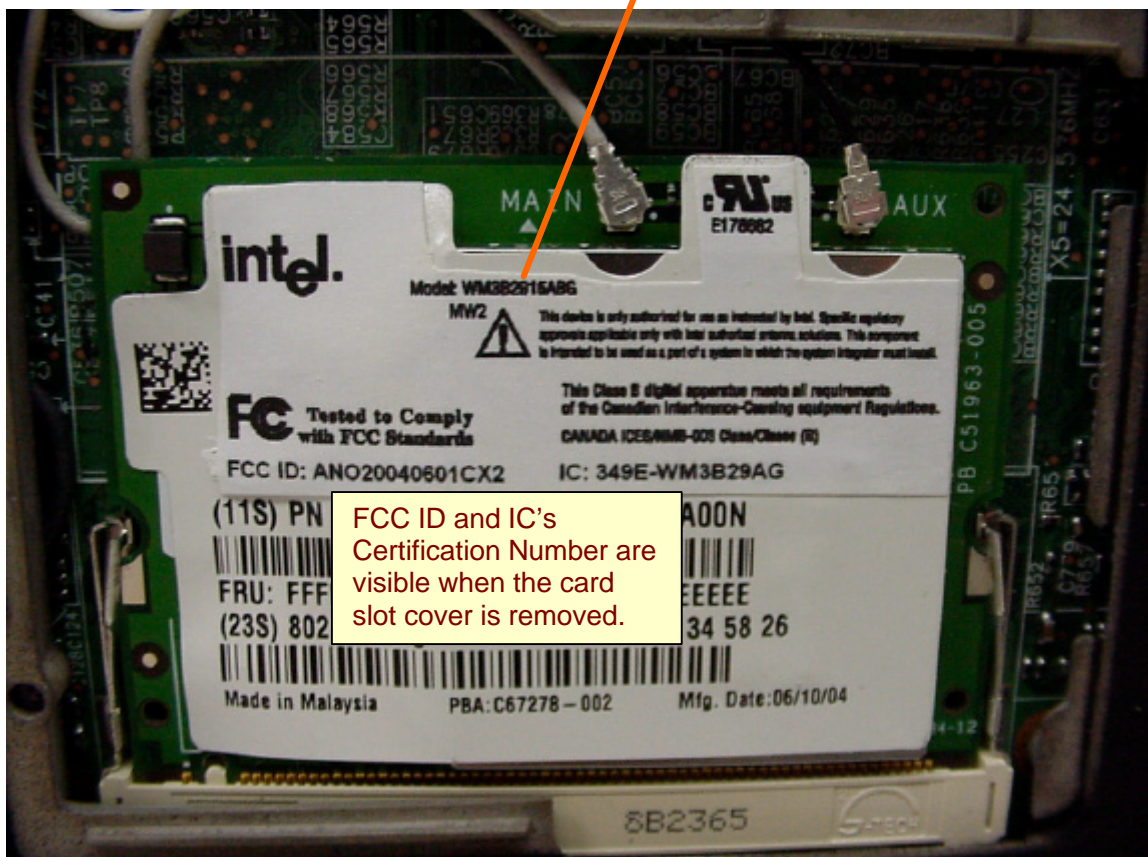
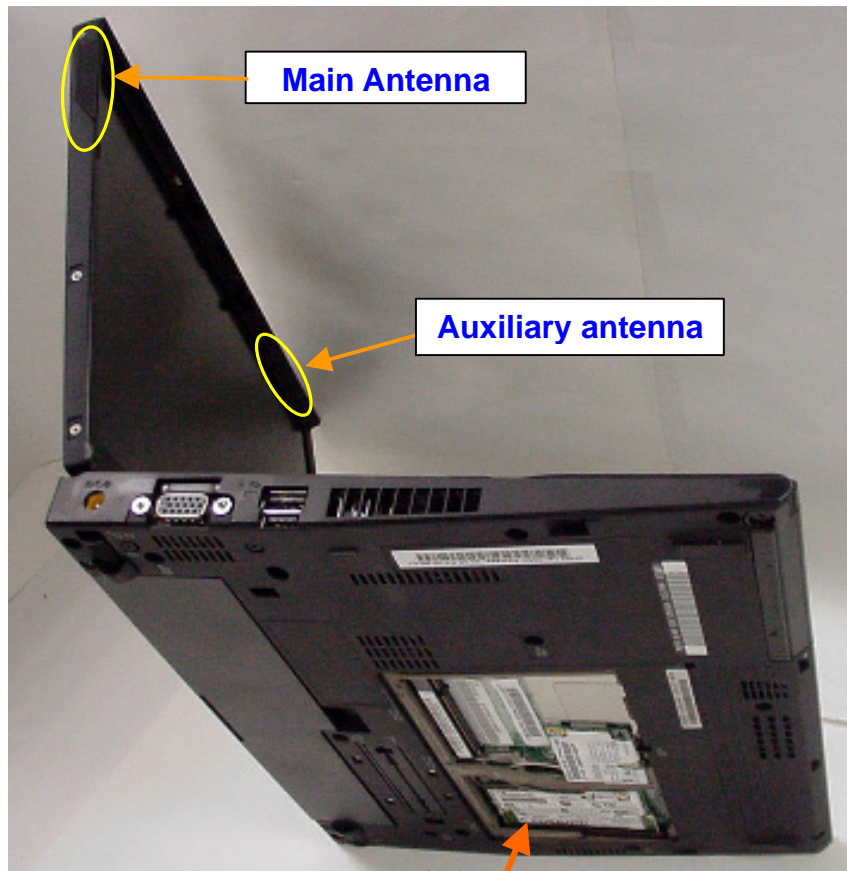
The host device (ThinkPad X30 Series) supports the applying transmitter and a built-in type Bluetooth LMA transmitter which was certified separately (FCC ID: ANO20020100MTN, Feb/26/2003, or ANO20040700HER, in certification process)

Bottom view  
Front Side

TX FCC ID for an installed CDC transmitter Card located under customer removable keyboard.

 <p>Type 2672 型号 2672 16V --- 3.5A 电压 16V --- 电流 3.5A</p>		<p>UL LIMITED L.T.E. 187G CE</p>
<p>Marca Registrada Registered Trademark of International Business Machines Corporation COPYRIGHTED CODE AND PARTS CONTAINED HEREIN. ©COPYRIGHT 1981, 2002 IBM CORP.</p>		
<p>This Product contains a Lithium Ion Battery, Lithium Battery and Cathode Fluorescent Lamp which contains mercury. Please refer to User Manual or follow Local Ordinances or Regulations for Disposal of this machine. 警告: 电网电压与电源设置电压必须相符</p>		<p>802.3 MAC Address</p>
<p>Manufactured by IBM Made in Mexico</p> <p>AUSTRALIA WARNING: ONLY EQUIPMENT THAT HAS A TELECOMMUNICATIONS COMPLIANCE LABEL MAY BE CONNECTED TO THE HEADSET PORT.</p> <p>Apparatus Claims of U.S. Patent Nos. 4,631,603; 4,577,216; 4,819,098 and 4,907,093 licensed for limited viewing uses only.</p> <p>CANADA ICES/NMB-003 Class/Class B</p>		
<p>FC Tested To Comply With FCC Standards FOR HOME OR OFFICE USE</p>		
<p>802.11 MAC Address</p>		

### IBM ThinkPad X40 Series

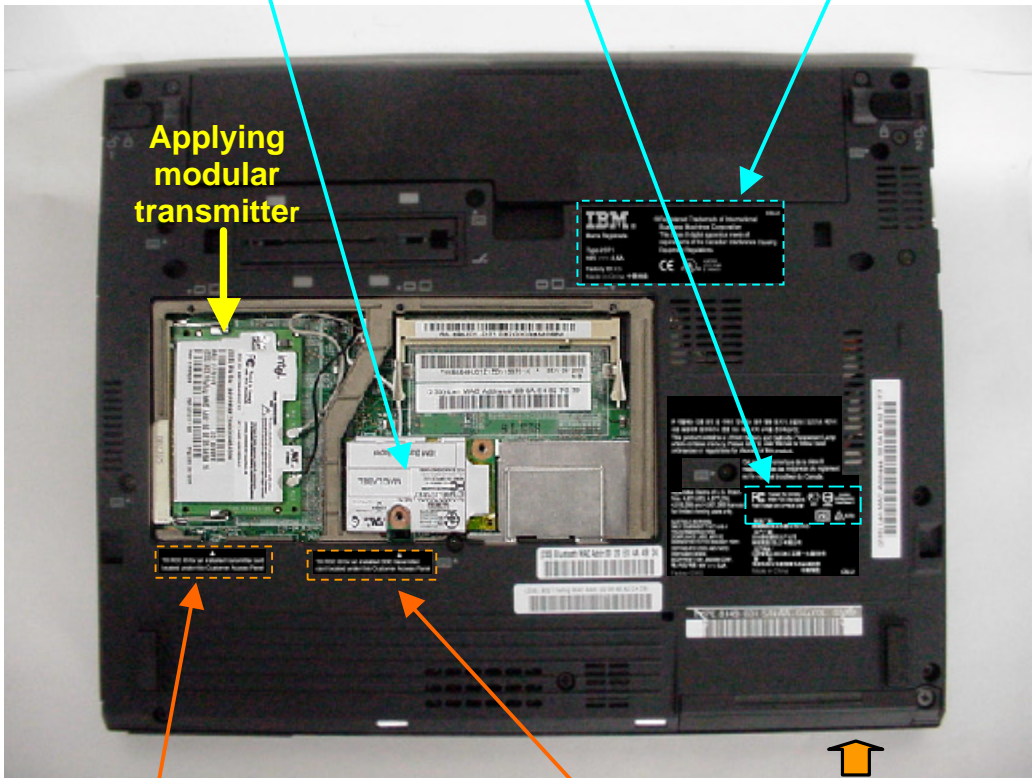




### Bottom side of IBM ThinkPad X40 Series



The host device (ThinkPad X40 Series) supports the applying transmitter and a built-in type Bluetooth LMA transmitter which was certified separately (FCC ID: ANO20020100MTN, Dec/17/2003, or ANO20040700HER, in certification process)



TX FCC ID for an installed transmitter card located under this Customer Access Panel

TX FCC ID for an installed CDC transmitter card located under this Customer Access Panel